

Newtown Linford Magazine

ISSUE NUMBER 172

CONTENTS

Church News	3, 16,22/23
Coffee & Cake	7
Boules	8
Brownies	9, 12/13
Gardening Club	11
Ramblers	14
Art Club	15
Basic Life Support Training	17
Friends of Charnwood Forest	18
Tennis Club	19
Auction of Promises	20
Church Flowers	20
Village Directory & Welcome	21
Carbon Reduction Course	25
From the Records	27
National Garden Scheme	28
Linford Pool Tournament	31
Village Hall News	32
Scarecrow Festival	32
Neighbourhood Watch	33
Bus Service Timetable	35
Report from David Snartt	36
Parish Council	37



March 2020

Paint Wizard



All Types of Vehicle Body Repairs

Panel Resprays	Scratch Removal
Stone Chip Repair	Windscreen Repair
Colour Restoration	Alloy Wheel Refurbishing
Machine Polishing & Glaze	Colour Code Bumper Resprays
Colour Code Wing Mirror Resprays	

Free Collection & Delivery Service Available

Call for a No Obligation Quote

07850 456696

Proprietor Paul Beaver, Grey Crescent, Newtown Linford

Natural  Elements

Physiotherapy &
Natural Health Clinics

Physiotherapy - Acupuncture - Pilates Classes

Sports & Deep Tissue Massage

Reflexology - Aromatherapy Massage

Foot Health & Nail Care - Verruca - Callus

Mindfulness - Counselling - Hypnotherapy

Come and see us or give us a ring:

0116 367 6472

28 Ratby Road, Groby LE6 0GG

www.theNaturalElements.co.uk

or Info@theNaturalElements.co.uk

Horseshoe Cottage Farm

Luxury bed and breakfast accommodation



Award Winning B & B.

Winner of Leicestershire's B&B/
Guest Accommodation 2018 and
Leicestershire's Best Breakfast
2018

Previous winners of Outstanding
Customer Service & Sustainable
Tourism in the East Midlands

Roecliffe Road, Hallgates, Cropston, Leicestershire LE7 7HQ

Tel: + 44(0)116 2350038

Email: lindajee@horseshoecottagefarm.com Website www.horseshoecottagefarm.com

The Bradgate

Group Parish



At a recent sermon I solemnly informed the congregation that the renovation work in the Church had uncovered some significant issues with the stonework, likely leading to a much extended closure of the building. While some responded with slight shock, a greater number looked at me with scepticism. I didn't know whether to be offended at how quickly they disbelieved me!

I'm thankfully able to say that no such issues have really been found. In fact, the work on the Church building is progressing well to, if not slightly ahead of, schedule, with painting able to begin in mid-February. The pictures accompanying this article illustrate some of what has been done so far.

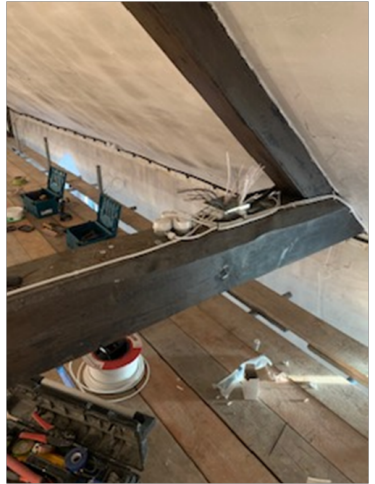
So thoughts turn to April and the re-opening, which will coincide with Holy Week and Easter. I am delighted that on **Easter Sunday, 12th April, at 10.30am**, the choir (augmented by many fellow members of the Choral Society) will be singing parts of the 'Little Jazz Mass' performed by the Choral

Society at their recent concerts, in the service to help make it a truly joyous occasion. Everyone is welcome, of course, as always, to this double celebration: which is primarily, of course, an opportunity to rejoice in the fact of Jesus' resurrection – the stone problem the Roman guards had was a very real one, it had been rolled away, Jesus was no longer lying behind it – but also a chance to mark the start of the next phase of life of our venerable building.

Other services will be happening in the Church over Holy Week – morning prayer most days at 8.30am (followed often by a bit of post-renovation clearing and cleaning!), a Good Friday Service of Reflection and Meditation at 2pm and an open day on Saturday 11th April. Again, everyone is most welcome, both to see the renovation outcome and, more importantly, to reconnect with the resurrection, the best news ever: death is defeated, Jesus has risen!

Richard Trethewey, Rector of All Saints' Newtown Linford & St Peters, Glenfield

More photos over page & on page 16



VILLAGE DIARY

March

- 14th Ramblers
14th Brownies Rummage Sale
16th Friends of Charnwood Forest (Woodhouse Eaves)
22nd Mothering Sunday
24th Gardening Club
30th Parish Council Meeting 19.15

April

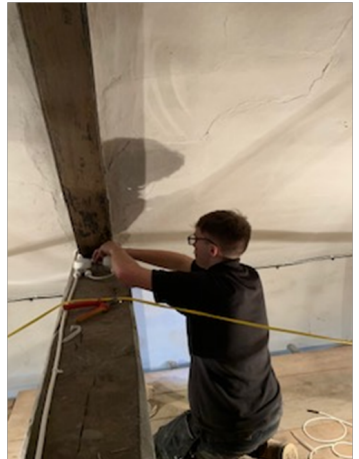
- 5th Tennis Club Open Day
8th Resuscitation Classes
24th Auction of Promises

Regular events

- | | |
|----------------------------|--|
| Mondays 9.30 | Legs, bums & Tums, The Linford |
| Mondays 10.15 | Pilates for Beginners, The Linford |
| Monday afternoon | Mature Movers fitness class Village Hall |
| Mondays 6.30 | Brownies, School |
| Mondays 6.30 | Yoga, Village Hall (also Wednesdays) |
| Mondays 8pm at the Church | Bell Ringing |
| 4th Tuesday of the month | Gardening Club |
| Wednesdays | Trim N Tone fitness class The Linford |
| 3rd Wednesday of the month | Ladies Luncheon Club |
| Thursdays 9.15 | Jolly Tots Playgroup, |
| Thursdays 11.00 | Coffee Mornings for all, Village Hall |
| Thurs 12.15 | Senior Well Being Programme |
| Thursday Eves | Bridge Club 9 Main Street |
| Thursday 6.30 | Aerobics, Kettlebells/Pilates, The Linford |
| 3rd Thursday | Gentlemen's Lunch Club |

Thank You . A big thank you to Joyce Lowe who has delivered the Village Magazine on Bradgate Road , and previously the Church Magazine, for longer than the editor can remember. Joyce has retired and we all - the Church, Parish Council and Magazine Committee wish to say thank you for all the time you have given to the village.

Also thank you to Rob who has taken over Joyce's role delivering the Magazine.



All Saints'
Newtown Linford



Easter re-opening

Join us to celebrate
the re-opening of All Saints' Church
following renovation
on **Easter Sunday, 12 April, at 10.30am**

*The service features members of the Choral Society
singing elements of Chilcott's 'Little Jazz Mass'
as recently performed in their January concerts*

Refreshments, including cake and Easter eggs,
served after the service

**There will be an Easter Egg hunt
for children following the service**





Come along.....

Senior Well Being Programme
Every Thursday : 12.15 to 1.15pm.

Newtown Linford Hall
Personal Trainer: Phil Malley

Please call Sandra at Home Instead – 0116 3192474 to book a place.
First week FREE, £5 a session – pay on arrival.



BROUGHTONS
— LIGHTING & IRONMONGERY —



Showroom Open
Monday - Saturday 9am - 5pm

The Old Cinema Cropston Road Anstey Leicestershire LE7 7BP

0116 232 3175

www.broughtons.com sales@broughtons.com



Coffee & Cake @ Newtown Linford Village Hall
Thursday Morning 11am - 12.15 Free
All Welcome - All Ages



Coffee and Cake Duty Rota

March

5 th	Mary, Wes, Sarah Raynor, Jean Deveaux	243042
12 th	School, Judy Rowe, Clare Altridge	243989/243119
19 th	Carol Ann, June Hallam, Sue Howard	243433/Lei 2304808/245373
26 th	Iris & Peter Sayer, Glenis Meredith	243822

April

2 nd	Lesley Cook/Chris A/Gay Redstone/Carolyn	242214/242432/ Lei2351625/249173
9 th	Casey Pearson, Jenny C, Mandy James, Marie Wilday	249259
16 th	Sue Morran, Sarah Brown, Teresa Calvert	07810116641/ 07811166161/ 07469719018
23 rd	Jo & Claire Costello, Lalita & Stephen Peterfield	249613/01509 890447

An opportunity for everyone to catch up on Village news and activities and to meet your fellow neighbours

Rota Volunteers - If you are struggling with putting the Tables and Chairs out for your duty the following have offered to help if around just give them a call

Roger Leech 0116 3480192/; Wes Raynor 243042; Joe Costello 249613; Arthur Harrison 0116 2213845/ Alan Birkett 244317

Jolly Tots is running in the Village Hall whilst the Church is being renovated. Thank you to all the Coffee & Cake group for accommodating the youngsters and their families. Welcome to everyone we hope you will stay after Jolly Tots for Coffee & Cake, it is lovely to see all the generations together in one place in the village.

Afterward coffee and cake - why not stop and take part in the Senior Well Being Programme that will be taking place every Thursday between 12.15 and 1.15. See advert on opposite page

NEWTOWN LINFORD BOULES

Welcome to our eighteenth year

2020 SEASON

TUESDAY 19th MAY

TUESDAY 16th JUNE

TUESDAY 14th JULY

TUESDAY 18th AUGUST

TUESDAY 15th SEPTEMBER

Meet outside the Village Hall at 6.20pm
(September 6.00pm).

All matches to be played at
The Blue Bell Inn, Hoby.

In the event of rain we play skittles.

These evenings are very sociable fun
events with good food
and company.



CONTACT DICK HOWARD 01530 245373

New members and visitors welcome, no experience necessary.

Janet Neaverson

Long-time village resident Janet Neaverson died on 10 February, 2020, in Cedar Mews Care Home. Janet was a strong supporter of All Saints Church, and had requested that her funeral service should take place there. As the Church is at present closed for renovation this is not possible. However, a Service of Thanksgiving for Janet's life will be held in the re-opened Church at 2pm on Wednesday 8th April, conducted by the Venerable Richard Worsfold, Archdeacon of Leicester. It is hoped that all of Janet's friends will be able to attend. Light refreshments will be provided afterwards at The Linford

A fuller obituary will appear in next month's Magazine.



RUMMAGE SALE



NEWTOWN LINFORD BROWNIES

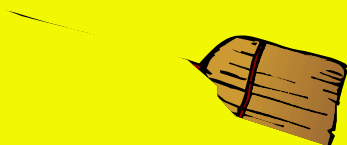
Saturday 14th March 2020

1.30pm in the Village Hall

Admission 50p

Tea and Home Made Cakes

**Are you Spring
Cleaning?**



If so and you are outting unwanted clothes and bric-a-brac - please will you remember we are having a rummage sale and would be very grateful for your surplus articles.



Village Hall doors will be open for dropping off rummage from 9.15am on date of sale, or collection can be arranged on the Friday evening - March 13th .

Hilary - Brown Owl 07432 302983

Scott Raynor - 0753 5365887



ROY GREEN

CHARTERED SURVEYORS

LETTINGS & ESTATE AGENTS

SELLING?

Roy Green Estate Agents provide a service that you can rely on. As members of the Royal Institute of Chartered Surveyors, our qualified, friendly team will guide you through the sales process from booking your market appraisal to handing the keys over.

- Accompanied viewings where required
- Weekly regular updates
- Local experienced team
- 306⁰ virtual tours
- Property with particulars on website
- Free EPC and Floor plan
- Specialist in probate valuations
- Vendor care and sales progression negotiator

ROY GREEN
CHARTERED SURVEYORS
LETTINGS & ESTATE AGENTS

LANDLORDS

OUR RATES:

- Full Management: 8% plus VAT
- Let Only: £225.00 plus VAT
- Tenancy Set Up Fee: £250.00 plus VAT per property
(perable only on clauses of tenancy/new tenancy)

15 The Nook
Anstey
Leicestershire
LE7 7AZ

0116 235 3009

office@roygreen.co.uk



RICS

ROY GREEN
MEMBER OF
THE RICS

For further information please call us: 0116 235 3009

Newtown Linford Gardening Club

What a strange winter we have had. The winter flowers like snowdrops arrived later than usual, yet some of the signs of spring are already appearing some weeks ahead of schedule. We have had little or no snow and very few frosts but much more wet weather than normal. How our gardens will look in April is anyone's guess.

Our year began with a talk from Sue Blaxton about the walled gardens of Leicestershire. Although many of them are gone or almost unrecognisable, we were surprised to learn just how many there were and how close some of them were to Newtown Linford. Around 90 members braved the weather to fill the hall on this occasion.

Our March guest is the first of our celebrities for the year. On 24th March we welcome Helen Yemm, the gardening correspondent of the Daily Telegraph. She was due to come a couple of years ago but ill health necessitated a cancellation. We are delighted that she has now recovered and is able to visit us. We invite non-



members to join us at

our celebrity evenings and we have tickets available for anyone who wishes to come and hear her speak. They are £12 each and obtainable from the Club Secretary.

Anyone interested in our activities can contact the Secretary (tel.01530 242452) or e-mail us at 32couling@gmail.com, or else come along to one of our meetings as a visitor (£3). If you would like a copy of our programme for the coming year, we will be pleased to send one to you.

Anne and David Couling

SYKES JEWELLERS

WATCH, CLOCK &
JEWELLERY REPAIRS

WATCH BATTERIES AND
STRAPS FITTED WHILE
YOU WAIT

8 BRADGATE ROAD, ANSTEY
TEL: 0116 236 2510
sykesjewellers.co.uk



From the Records and Brownies?

We were sorting through the Village Records and in doing so came across this photo.

It was in the 1965 WI Scrapbook. I can't tell if it is an actual photo of our Brownie pack or not. It is very well stuck down on the page so I can't see what is on the back without damaging it.

Brown Owl has a copy and has asked a couple of those who she thought might have been on it without success. It is a lovely photo and makes me smile every time I look at it. Does anyone recognise any of these young girls?

Email us at the Village Magazine



The article that accompanied the picture in the village records has been copied below.

Newtown Linford Brownie Page

Believe it or not taking Brownies can be a very hectic job, even if you are young and active, as Mrs. Preston and I have found out.

This Brownie pack has now been going for several months and we now hope we are well established, as previous attempts have foundered despite initial successes. We have ten brownies who regularly attend, and we are now looking forward to an early enrolment ceremony.

During the year the pack paraded at Church for the Commonwealth Youth, Sports and Armistice services. Despite the fact that quite naturally Brownies prefer games to all other activities, they are beginning to show an interest in service to others. Several have given quite a lot of their time to knitting and sewing for the mission at Ado Ekito in Nigeria.

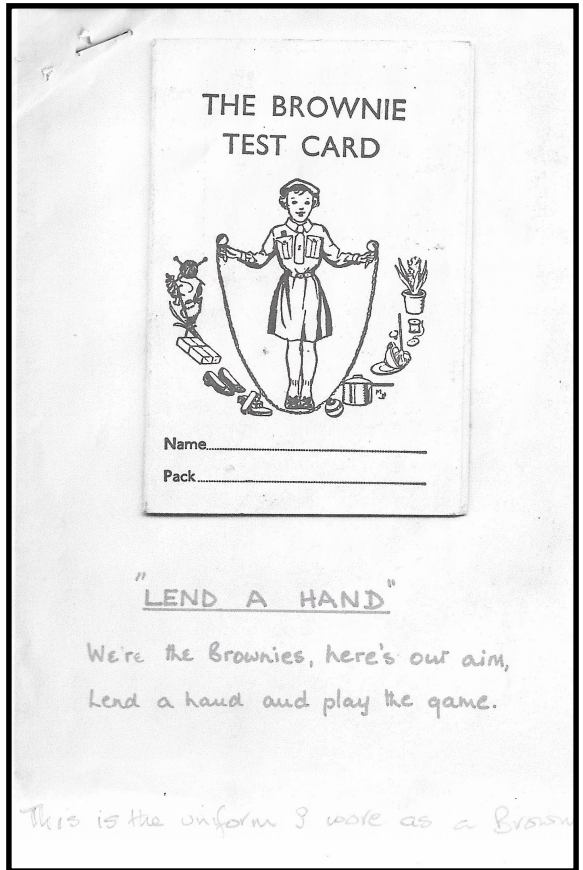
We all hope that the plans we are making for the coming year will enable us to take part in additional activities.

Adjacent is the Brownie Test Card with a hand written note "Lend a Hand"

We're the Brownies, here's our aim

Lend a hand and play the game.

Hilary noted that this is the uniform she used to wear!



Village Ramblers

For the February walk we were fortunate to avoid, by a matter of hours, the much-heralded arrival of Storm Ciara, with the afternoon of the 8th turning out to be dry and sunny.

After meeting in the village as usual, we shared cars to take us to the start of the walk at Woodhouse Eaves. A total of 56 feet (i.e.. 16 people and 6 dogs!) set out from the car park at the Village Hall and walked along Main Street and up Maplewell Road to join the footpath leading to Broombriggs Farm - a working arable and livestock farm gifted to Leicestershire County Council in 1970 and now managed by its County Parks Service. A steepish climb to the top of Broombriggs was rewarded with lovely views across Charnwood and beyond. We then followed the path down the other side of the hill and crossed Beacon Road to enter the lower area of Beacon Hill. After exploring the rhododendron labyrinth, we decided on a cup of tea at the nearby café where the frustratingly slow-moving queue drove some of us to make for the ice cream van as an alternative source of refreshment. Afterwards, we walked back to Woodhouse Eaves via Windmill Hill, the planned return route curtailed a little by skirting, rather than climbing, the hill.

The next walk will be on **Saturday 14th March**. Meet at 2pm opposite the Village Hall. New walkers warmly welcomed. Unless otherwise notified, all walks depart from opposite the Village Hall at 2.00pm. New members are always welcome. All you need is a pair of walking boots and the ability to walk 4/5 miles. Well behaved dogs are also welcome but must be under the supervision of the owner and be on the lead wherever there is livestock or nesting birds

Claire Costello



Newtown Linford Art Group

It's a long while since we reported on the activities of our local Art Group. We continue to meet on Friday mornings, under the inspirational leadership of John Nixon. He sets a varied programme of media and styles of drawing and painting. Our student numbers each week average between 6 and 10.



After more than 20 years of using the studio above Jenny Whitehead's stable block on Main Street we have relocated to Vine Cottage, by kind invitation of Wes and Mary Raynor.

As usual, our final session of the year was devoted to painting a mural. This entails each of us painting a scaled up version of a tiny picture of a part of a famous painting. It's always fun to see whether the individual pieces actually match up when stuck together. In December 2019 the famous painter was Maurice de Vlaminck, and our effort is shown below, being presented by John Nixon.



Cook's Farm Shop & Country Supplies

Markfield Lane, Newtown Linford, Leics, LE6 0AB



01530 242214 - www.cooksfarmshop.co.uk



Beef - Pork - Lamb - Chicken -
Sausage - Bacon - Ham - etc
Brockleby's Pies - Fresh Farm Eggs -
Clarks Ready Meals - Potatoes -
Fresh Fruit & Veg -
Butter - Cheese - Milk - etc.
Pickles - Preserves & Chutneys



10% off

**ALL DOG
BEDS and
COATS**



Wild Bird Mixes - Niger Seed - Peanuts - Sunflower Hearts
Animal Feeds and lots, lots more!



**Coal - Logs
Kindling -
Firelighters**

Visit our website: www.cooksfarmshop.co.uk

Open: Monday to Friday 9am to 5.30pm - Saturday 9am to 5pm - Sunday 10am - 1pm



A peep inside the church
as it undergoes
re painting



BASIC LIFE SUPPORT TRAINING

RESUSCITATION and use of DEBIFRILLATOR

WEDNESDAY 8TH APRIL 7pm VILLAGE HALL

- Can you recognise the difference between a cardiac arrest and a heart attack?
- What is the first thing you should do?
- Do you know how to apply resuscitation?
- Where is the nearest defibrillator?
- Do you know how to use it?
- How do you easily roll a prone body onto their back?
- Can you answer “**yes**” to all these questions?



Help is at hand, Angela Blackmore has agreed to give a simple training course to provide you with these vital life support skills. Angela was a former NHS resuscitation officer at the LRI and she will provide hands on training and the opportunity to practice on manikins, so be prepared to be on your knees. You will also learn how to use a defibrillator, instruction on the recovery position, and on choking in babies, infants and adults.



Making the right decision is the difference between life and death.

You may only have a few seconds.

I would encourage you to come along to the Village Hall on Wednesday 8th April for a 7pm start. Please book your place (max 30) with either

Carol Ann Sugden 01530 243433, casug1@btinternet.com

Elaine Mulvihill 07748 097123, e.mulvihill1@gmail.com

Dick Howard 01530 245373 richardhoward342@btinternet.com

so that we can provide sufficient equipment and helpers.

Tea and coffee will be provided at the interval.

Dick Howard



THE FRIENDS OF CHARNWOOD FOREST



Dr McNeil's report on January meeting.

On 20 January Uta Hamzaoui of Leicestershire and Rutland Wildlife Trust gave a Talk on the Flora of Charnwood Forest. She has been working on the Living Landscapes project in the Charnwood Forest since 2012, and in particular advising landowners of the best methods of maintaining interesting environments, mainly for the plant life, though she did mention a couple of rare bugs at the end of her talk.

The prevailing botany depends on the nature of the underlying rocks and the drainage. The oldest rocks in the Forest are over 600 million years old, created by the volcanic activity which took place in those times. Soils on those rocks are thin and acidic. By 250 million years ago mudstones had formed, and desert conditions prevailed. The heavy clays we now see are red in colour, derived from these sands. Finally the glaciers of the ice age carved through the rocks, resulting in some places having excellent drainage, others poor, and a few places where there is virtually none.

But the most important influence on botany is from agriculture and arboriculture. The original tree cover was virtually eliminated. Most of the Forest is not suitable for ploughing, with rocks protruding through the soil, so pasture and grazing animals formed the bulk of the farming activity. In fact, certain types of heathland can only be preserved economically by grazing. Over-fertilisation has resulted in the loss of over 95% of traditional hay meadows. Streams and rivers drained much of the land with a little encouragement, but in a few places bogs and wetlands still prevail.

Uta discussed examples of each type of habitat, and gave us information on some of the plants to be found on each, including some interesting facts about symbiotic and semi-parasitic ones. These were all well illustrated with slides.

March Talk and AGM.

The next meeting of the Friends of Charnwood Forest will be in Woodhouse Eaves Village Hall on Monday March 16th at 7.30pm. A short AGM will be followed by a talk from Richard Bailey from Bawdon Lodge Farm on 'Not just a field and a farm: Diversification in Charnwood Forest'. The farm is well known now for its many events, including gin tastings! **Visitors welcome - £3.**

TENNIS CLUB OPEN DAY

Sunday 5th April 10am - 1pm

Come and see the amazing NEW CLUB HOUSE
Meet the Coach
Play Some Tennis - Games / Bouncy Castle
Refreshments
Kids Easter Camps sign up



New Tennis Clubhouse Open!

After a very wet winter of work by local builder Phil Stephenson we are thrilled to open the new Tennis Clubhouse. All the materials were carried over the



Cricket outfield by club volunteers and some villagers that just happened to be passing at the wrong time! A huge thank you to everyone who helped it has been a team effort.

This facility will make such a difference to players and spectators. The club runs year round so the winter months will be much more bearable

Come and see it on the Open Day on Sunday 5th April 10am to 1pm and why not join up and start the new exercise regime you promised in the New Year?



TENNIS CLUB AUCTION OF PROMISES

FRIDAY 24th April 2020

Many fabulous promises -

Cheese & wine £5 a ticket

ALL PROCEEDS TOWARDS THE NEW TENNIS CLUBHOUSE

Everyone welcome family, friends, children members

For further info tel. Carol Ann 243433 -
Carolyn Turner 249173

If you have a promise you would like to include please contact the above.



Church Flowers

We all look forward to the flowers returning to our Church at Easter and really appreciate the work done by our loyal flower arrangers. We would love this year to be really special as the Church reopens for worship after the refurbishment.

If you feel able to give a donation to the Flower Fund to help pay for them it would be appreciated.



Any gift can be handed to **Richard, Judy Rowe or Sue Howard.**

Village Directory and Welcome Pack

The Village Directory, which is periodically inserted in the Magazine, and also included in a Welcome Pack for new residents, is currently being updated. It will be inserted in the April or May Magazine and used in the Welcome Pack until the next update - likely to be in 2022.

This is a free service for villagers originally started by the Women's Institute and now undertaken by Hannah, the Parish Clerk and Carole for the Village Magazine.

The Directory contains contact details that residents will find useful and relevant such as hospitals; doctors surgeries; schools; utilities; Councillors etc. It also includes businesses that advertise in the Magazine and other village businesses and services based in the village or owned by residents.

If space is available, we shall offer other businesses (not based in the village), the opportunity to be included at a cost of £10 per line to help cover the cost of printing.

Can anyone who is interested in taking up this opportunity or wanting more information please email Carole by 15th March.

**If you would like to be included please contact Carole, with details of your business,, phone number and address.
Email heubeck111@btinternet.com.**

Revive Your Three-Piece Suite!

Have Your
Existing Cushions
Professionally
Re-Filled



There's no need to throw out your sofa or easy chairs just because the cushions look a bit battered and bruised!

We will supply and cut high quality foam inserts to give your furniture a complete make-over!

Call for a quotation today!

Simon Shuttlewood
quality upholstery

7 Edward Street, Anstey, Leicester LE7 7DP
Telephone: 0116 234 0350

BRADGATE TEAM SUNDAY SERVICES March 2020

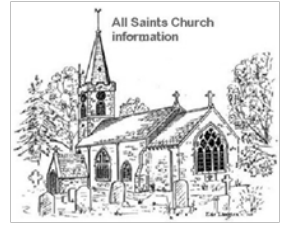
DATE	GLENFIELD	NEWTOWN
1st March 1st Sunday of Lent	8.30am Holy Communion (SA)	
	9.00am Breakfast Church (RT)	10.30am Holy Communion (SB/JW)
8th March 2nd Sunday of Lent		8.00am Holy Communion (RT)
	10.15am Holy Communion (RT)	10.30am Morning Prayer (JW)
	6.30pm Wholeness & Healing Holy Communion (RT)	<i>At St Peter's</i>
15th March 3rd Sunday of Lent	8.30am Holy Communion (RT)	
	10.15am Service of the Word (GS)	10.30am Holy Communion (RT/JW)
	4.00pm Messy Church	
22nd March Mothering Sunday		8.00am Holy Communion (RT)
	10.15am Holy Communion (PH)	10.30m All age service (SA)
	6.30pm Compline (RT)	
29th March 5th Sunday of Lent	8.30am Holy Communion (RT)	
	10.15am Service of the Word (BH)	10.30am Morning Prayer (GS/JW)

MIDWEEK COMMUNION SERVICES March 2020						
GLENFIELD	Wed	10.45am	4th	11th	18th	25th

No Midweek communion services at Newtown whilst the church is being redecorated



CHURCH REGISTER, **NEWTOWN LINFORD**



Weddings
None

Baptisms
None

Funerals
None

Mothering Sunday 22 March

An all age service at 10.30am in the Village Hall, with the Brownies.

Easter Sunday 12 April

A major celebration of – first and foremost – the resurrection of Christ but also, secondarily, a chance for us all to rejoice in being back in a restored building.

Redecoration

The painting is proceeding well at a high level, most of the evidence of this is obscured by the scaffolding so unfortunately no fresh photos this month. The architect has visited this past week and is very happy with the progress of the work and the quality of it.

Church Contact Details

Revd Richard Trethewey
(Rector) 0116 287 1604 richard@allsaintsnewtownlinford.org.uk

Revd Sharon Andrews
(Curate) sharon@allsaintsnewtownlinford.org.uk

Hayley Moore (Church Administrator) 0116 239 3768
office@bradgatechurches.org.uk
www.allsaintsnewtownlinford.org.uk

Church Wardens: Jane Woolmer, Michelle Petty

Regular Events - Bell ringer's practice: Monday 8pm

Website: www.allsaintsnewtownlinford.org.uk

E.W. Goddard & Sons

(Established 1970)

**QUALIFIED PLUMBERS
Bathroom and Tiling
Specialists**

**All Building Work
and Renovation**

305 Markfield Lane
Markfield LE67 9PR

Telephone

01530 245316 or 0116 2311672
07961 319908 or 07961 319907

MARTIN ALLEN FLOORING & FRENCH POLISHING

**YOUR LOCAL
FLOORING SPECIALIST.**

All timber floors laid

**All existing timber floors sanded
and refinished**

Any colour or finish

**Free quotations - Call Martin.
0116 2165107
martin@martinallen.co.uk**



**Professional carpet &
upholstery cleaning and repair
services**

- ◆ Curtains cleaned in situ
- ◆ Expert spot & stain removal
- ◆ Guaranteed 5 year anti-stain policy
- ◆ Hand finishing of swags & tails
- ◆ Mattresses deep cleaned
- ◆ Pest control, unpleasant or destructive pests removed

Telephone 0800 328 2927

www.safeclean.co.uk

**PRIVATE AND
COMMERCIAL**

INTERIOR / EXTERIOR

A.B. SHERRIFF

Established 1988

**PAINTER &
DECORATOR**

**42 BRADGATE DRIVE
WIGSTON, LEICESTER**

**Telephone 0116 288 1048
Mobile: 07719 366 569**

CLIMATE EMERGENCY

Would you like to:



Understand more about climate change
Find out how you could live a more sustainable lifestyle
Share with others what you are doing and what you find

difficult to do

The plan is to run a carbon reduction course in the newly decorated All Saints' Church in June and July, meeting fortnightly on a Wednesday evening.

The course (Footpaths) will have sessions on Climate Change, Home Energy, Water and Waste, Food, Consumption and Transport.



Please contact Jane Woolmer (ejwoolmer@gmail.com) if you are interested in doing the course or if you want to know more about it.

Christmas Cards for Charity 2019

Information for everyone who donated to the above sending wishes to local villagers instead of sending cards

You raised £200 that was sent to the Y Centre where they help the homeless. The weather was not kind this year with rain and many nights going below freezing, hopefully your kind donations helped some of those who are not as fortunate as ourselves and the Trees!



COUNTRY DINING AND DRINKS

PRIVATE DINING ROOM FOR ALL CELEBRATIONS

Parties to Weddings

Meetings to Catch-ups

Now Open 11am daily

FAMILY PIZZA DEAL

2 Adult Pizzas, 2 Kids Pizzas
& 2 sides
£26.50

Monday 4pm-6pm
Tuesday - Friday 4pm-7pm
Additional Adult Pizza £8.50
Additional Kids Pizza £2.50

TWO PIZZAS FOR £17.95

Monday 12 noon—6pm
Tuesday to Friday 12 noon—7pm

FIXED PRICE MENU

Monday to Friday 12noon—3pm
Two courses £14.25
Three courses £17.75

FRIDAY IS GRILL NIGHT

6PM - 9PM
2 X 8oz Rump Steaks
& bottle of House Wine £32
2 x 8 oz Sirloin Steaks
& bottle of House Wine £36

THURSDAY IS BURGER NIGHT

6-9PM
Any 2 Burgers & 2 Pints £24.00
£2 surcharge for Tower Burgers

Tel: 01530 242239

Email: contact@thebradgate.com www.thebradgate.com

From the Records

Following the mention of The Lady Jane Returns - A Pageant of Bradgate in the November Magazine, Pam McMorran was able to lend me a copy of the souvenir programme that was her mother-in-law's.

She has also been in contact with Betty Patrick and went to visit her to talk about the Pageant when all the village was involved. Betty still has some original costumes from the Pageant, which she has passed onto Pam for the village archives - we now need to know where to store them. What we would like to do is find a couple of willing volunteers to model them for the Village Magazine - anyone willing?

I will cover the Pageant over the next few editions of the Magazine. It was a huge occasion not just for the Village but for the whole of Leicestershire. The programme actually mentions that augmented bus services will be arranged by Midland Red from the Park Gates to St Margaret's Bus Station and that Late Buses to all parts of the city from St Margaret's Bus Station will be arranged by Leicester City Transport! Obviously this was a huge event!

Officers of the Pageant Committee:

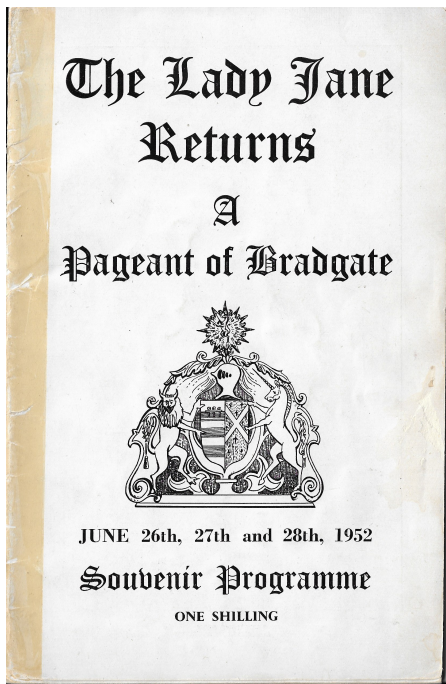
Chairman Rev Herbert P Hargreaves,
The Vicarage, Newtown Linford

Hon Secretary George Owen Mad-
docks, Birchwood 215 Markfield Lane

Hon Treasurer H W Watterson,
Bodnant, Newtown Linford

Pageant Master Basil L Gimson,
Stoneywell

Producer Jack Ayling High Acre Newtown Linford **More next month**



Pageant Master and Jester—
BASIL L. GIMSON

National Garden Scheme Open Gardens March 2020



Spring has arrived with gardens full of blooming spring bulbs, early flowers and blossom. From March onwards all over Leicestershire volunteers will be opening their gardens for charity. Over the year more than 40 gardens will open from smaller cottage style gardens to large estate sized gardens offering visitors a range of garden experiences.

The modest entrance fees and money raised from the sale of delicious homemade tea and cakes goes to support vital charities, such as Marie Curie, Hospice UK, Horatio's Garden, Macmillan Cancer support, Mind and other caring charities. In 2019 National Garden Scheme donated £3million to charity raised by the good will of our garden owners and visitors. Leicestershire raised over £56,000 and we hope to raise more this year as we are lucky to have an additional 20 gardens open on show. Visiting our gardens provides an inexpensive day out in beautiful surroundings to relax body and soul. The NGS is committed to improving mental health through the benefits of gardens and gardening and will launch Gardens and Health week on May 9th. On the website www.ngs.org.uk there are inspiring stories and individual tales about people whose lives have been transformed by their gardens.

On Sunday 1st March we have two lovely spring gardens opening at Hedgehog Hall at Tilton on the Hill LE7 9DE 11-4pm and at Westview in Great Glen LE8 9EH 12- 4pm. **Westview** at 1 St Thomas's Road, Great Glen, Leicestershire LE8 9EH is a walled garden full of over 350 varieties of snowdrops, many types of Daffodils, Aconites, Hellebores, Crocus, Pulmonaria, and Cyclamen. So much to see and enjoy not forgetting Tea, Homemade Cakes, Soup and Rolls on sale. There is also a Plant Sale, ideal to buy snowdrops for next year's display. **Hedgehog Hall** at Loddington Road, Tilton on the Hill, Leicestershire LE7 9DE also opens on 1st March with lots of spring planting on display including many different ferns and Hellebores, Podophyllums, Polgonatums and Epimediums. There will be refreshments on sale including homemade soup.

Near Oakham, Gunthorpe Hall LE15 8BE opens on the 22 March, between 2-5pm. This is a large garden in a country setting with extensive views across the Rutland landscape with the carpets of daffodils being a key seasonal feature. The Stable Yard has been transformed into a series of parterres. The kitchen garden and borders have all been rejuvenated over the last five years.

There are more details about these gardens and others in Leicestershire at www.ngs.org.uk

The Old Post Office
Tea Room & Store

- FRESHLY COOKED FOOD SERVED ALL DAY
- HOMEMADE CAKES
- REAR PATIO GARDEN & SEATING
- MUDDY BOOTS & DOGS WELCOME
- LOG BURNING STOVES
- GIFTS & GREETINGS CARDS
- NEWSPAPERS, ICECREAMS & MUCH MORE

550 BRADGATE ROAD, NEWTOWN LINFORD, LE6 0HB
TEL: 01530 242709

OPEN FROM 9AM
MONDAY - SUNDAY

Foot Repairs

Home Service

Professional Foot Care

Alistair Watt

MAFHP MCFHP

Corns, calluses, ingrown and fungal nail problems, cracked heels and verrucae

A Friendly, reliable, genuinely local service
Service with a smile **GUARANTEED**

180 Main Street, Markfield
Tel 01530 243009 & 07802 777221

Hard Floor Restoration

**All Tiled Surfaces Repaired
Cleaned, Polished
& Sealed**

Qualified Tiler
Established 2004

**Free Demonstration & Quotation
Call Andrew**

07838 155153
65 Station Road Glenfield

Facebook Page [ajbceramics](https://www.facebook.com/ajbceramics)
www.ajbceramics.co.uk

A warm welcome for everyone at

THE LINFORD

66 Main Street, Newtown Linford
Tel: 01530 244012
theinford.co.uk



sky SPORTS

BT Sport

- Free Function Room Hire*
- Pool Table & Dart Board
- Free Pool Tuesday (members)
- Quiz every Wednesday
- Free WiFi
- Large car park

*When booked with bar

£1 off all draught beers
Tuesday, Thursday & Friday
6pm – 7pm

theinford.co.uk
01530 244012
newtownlinfordclub@gmail.com



AM Slimming & Fitness



The Linford, 66 Main Street, Newtown Linford, LE6 0AD

Thursday Evening Class 6.30 - 7.30 Aerobics/Kettlebells/Pilates £6

Monday Classes below

Legs, Bums & Tums 9.30am - 10.15am

Pilates for beginners at 10.15am - 11.00am

£5.00 per class or £7.00 for both classes

Please call Ann-Marie **07884203787** to reserve your place.
Please visit **www.amslimmingfitness.com** to view my
class schedule. Unlimited classes £26 per month

The Linford Pool Tournament Report

Friday 10th January 2020

For the 12th year in a row another highly enjoyable sponsored evening held at The Linford.

The tournament consisted of the very highest quality played competitive matches in a tough but friendly sporting environment. The hot joint favourites Graham Lea and Elvis Drummond both struggled in the early stages and were severely tested in all rounds.



Unfortunately for their opponents their class told, with them meeting each other in a thrilling best of three frames, which Elvis Drummond edged home by 2 frames to nil. To bring back-to-back final wins in a row.

Congratulations to both finalists.

A special mention also for outstanding performances from the “3 new kids on the block” - Karl Silver / Mick Grocock / Jon Wilkinson and Shaun Warrillow – their turn will surely come in 2021.

Pool Tournament Acknowledgements

Many thanks to the following for their assistance:

Claire “The Boss” for a great buffet

Olivia for organising the raffle

All those who kindly donated raffle prizes

Ben Hawkins and his family of muscular young (and some old) lads for moving the pool tables.

The brilliant double act of compere Gary Barsby and his right-hand man Dave Seddon.

The Linford Club is truly grateful to you all.

Claire

Village Hall News

At the AGM of the Village Hall in January we welcomed three new members to the Village Hall Committee: Tracy Hurst, Carolyn Lowe and Elaine Mulvihill. The remaining Committee members: Caroline Brewster, Janet Brunton, John Nixon, Sue Pritchard, Peter Rose, Peter Upton, Pat Wood and myself were all re-elected/re-appointed.

With the expanded Committee we hope to run more Village events, and two in particular are being planned:

1. Defibrillator and Resuscitation Training on Wednesday 8th April
2. A Quiz, probably to take place in September

The Thursday morning coffee mornings remain well-attended, and are being followed by a (gentle) exercise class. All welcome.

The Village Hall remains well-used during the daytime, mostly by the Pre-School, but there are some evenings when it is available for hire – in particular the Hall is normally free on Friday evenings. So if, for example, anyone is interested in starting a film club using our large screen, please contact Pat on 242251.

We also thank Martyn for continuing to act as caretaker with his efficiency and good humour.

Toby Manning

SCARECROW FESTIVAL – September 19/20th 2020

We are so pleased to announce that things are rolling along nicely for this years Scarecrow Festival with people already telling me their fabulous ideas for Movie themed ‘crows’. I’m really looking forward to seeing your creative designs. Don’t forget – there aren’t any design rules around this years entries but we are asking that you try not to use single use plastic in your designs.



Judging Categories will be as follows;
UNDER 12'S, INDIVIDUAL, FAMILY, BUSINESS & GROUP.

We are looking for volunteer judges so if you're interested or would like to suggest someone, please email me at NLScarecrow2020@gmail.com and pop the word JUDGES in the subject box. Entry forms will be available from March onwards but if you would like to email your entry to me now I require the following information:

Name of Scarecrow:
Address:

Your Name:
Category:

You can email that information to me at NLScarecrow@gmail.com I look forward to hearing from you.

Jacqui



Let's talk Cybercrime.

Cybercrime, also called Computer Crime, is one of the fastest growing criminal activities worldwide. It covers a wide range of illegal activity including financial scams, stealing identities, virus attacks, stalking and harassment, online grooming, computer hacking, money laundering, terrorism and racial hatred. The list goes on!

New technologies create new criminal opportunities but few new types of crime. An important aspect of cybercrime is its non-local character: actions can occur in jurisdictions separated by vast distances. This poses problems for law enforcement, since previously local or even national crimes, now require international cooperation.

So how can we protect ourselves?

It's important to take a proactive approach when fighting cybercrime. Online criminals employ many sophisticated techniques to gain access to your data, but there are several simple steps you can take to make their lives more difficult.

Download security updates - The older your operating systems are, the more likely that they are vulnerable to cyber threat.

Keep your antivirus software up-to-date.

Back up files and contacts using both cloud computing and external hard drives.

Use strong passwords - Don't repeat your passwords on different sites and change your passwords regularly. Make them complex, use a combination of at least 10 letters, numbers, and symbols.

Be cautious of emails sent to you from unknown sources and don't click on links or download attachments if you don't trust the sender. The consequences can be serious for your internet security.

Don't give out personal information to unsolicited emails - People can be conned into providing personal information (phishing) to scammers, who use these details to take money or steal your identity. Legitimate senders like your bank, will never ask you for any security details, or ask you to transfer money into another account.

Manage your social media settings and keep your personal and private information secure on social media. For instance, if you post your pet's name or reveal your mother's maiden name, you might expose the answers to two common security questions.

Teach your children about acceptable use of the internet. Make sure they know that they can come to you if they're experiencing any kind of online harassment, stalking, or bullying and set parental controls to limit access.

Keep up to date on major security breaches - If you do business with an online retailer or have an account on a website that's been impacted by a security breach, find out what information the cybercriminals accessed and change your password immediately.

For more information and advice on Cybercrime, please go to:
www.leics.police.uk/advice/advice-and-information/fa/fraud/online-fraud/

In other NHW news, I was very encouraged to see in the latest West Charnwood Neighbourhood Police Team's Newsletter, that there had been 'no crime of note' recorded for the previous month.

Keep 'em peeled!

Best wishes,

Hannah Shaw. Parish Council Clerk

Tel: 01530 249945

Email: clerk@newtownlinford.org.uk

How to contact the Police

All incidents are to be reported to the Police
and **by calling 101**

They will then assess the situation and deal
with the situation as they see fit.

This may involve a vehicle from
another area. If you wish, also ad-
vise our NHW coordinator who will
circulate if appropriate.



Service 125

Castle Donington to Leicester via Coalville & Bradgate Park

Operated by Roberts Coaches

Supported by Leicestershire County Council

Service Change

Following review of Services 120 and 155, these two services have been combined into one – Service 125 – with East Midlands Airport no longer being served. The new timetable for Service 125 will be effective from Monday 24th February 2020.

The new Monday to Saturday timetable is shown below:

Castle Donington – Leicester

Castle Donington Bus Station (Stand B)		10:15	14:00	
Isley Walton		10:19	14:04	
Tonge (Station House)		10:20	14:05	
Breedon on the Hill		10:23	14:08	
Worthington		10:30	14:15	
Newbold		10:33	14:18	
Coleorton		10:35	14:20	
Sinope		10:39	14:24	
Coalville Memorial Square Arr		10:57	14:42	
Coalville Memorial Square Dep	07:30	11:00	14:45	16:45
Hugglescote	07:34	11:04	14:49	16:49
Ellistown	07:37	11:07	14:52	16:52
Stanton Under Bardon	07:43	11:13	14:58	16:58
Markfield, Uplands Drive	07:48	11:18	15:03	17:03
Markfield, Markfield Court	07:53	11:23	15:08	17:08
Newtown Linford (For Bradgate Park)	08:00	11:30	15:15	17:15
Anstey	08:05	11:35	15:20	17:20
Glenfield	08:11	11:41	15:26	17:26
Leicester St Margaret's	08:25	11:55	15:40	17:40

Leicester – Castle Donington

Leicester St Margaret's	08:30	12:00	15:45	17:45
Glenfield	08:42	12:12	15:57	17:57
Anstey	08:48	12:18	16:03	18:03
Newtown Linford (For Bradgate Park)	08:53	12:23	16:08	18:08
Markfield, Markfield Court	09:01	12:31	16:16	18:16
Markfield, Uplands Drive	09:08	12:38	16:23	18:23
Stanton Under Bardon	09:13	12:43	16:28	18:28
Ellistown	09:19	12:49	16:34	18:34
Hugglescote	09:22	12:52	16:37	18:37
Coalville Memorial Square Arr	09:25	12:55	16:40	18:40
Coalville Memorial Square Dep	09:30	13:15		
Sinope	09:36	13:21		
Coleorton	09:40	13:25		
Newbold	09:44	13:29		
Worthington	09:47	13:32		
Breedon on the Hill	09:54	13:39		
Tonge (opp Station House)	09:57	13:42		
Isley Walton	09:58	13:43		
Castle Donington Bus Station (Stand B)	10:12	13:57		

If you have any questions or queries, please call our Customer Service Centre on 0116 305 0002 or email tps@leics.gov.uk

Parish Councils Support for Armed Forces.

Nine Parish Councils within the Borough of Charnwood have shown their commitment to supporting the military personnel community by signing the Armed Forces Covenant.

Charnwood Borough Council hosted the event where Parish and Town Councils from across the Borough came together to pledge their support for current serving personnel, veterans, reservists and their families.

I was pleased to see that both Parish Councils within my Council Ward, Newtown Linford and Woodhouse signed the covenant at this event.

The Borough Council signed the Armed Forces Covenant in 2013 to help develop and support the armed forces community and ensure that military personnel do not face any disadvantages as a result of their service.



Council Tax Proposal.

Charnwood Borough Council is proposing to raise its share of Council Tax by less than 9p per week for a band D property. The proposed increase would see the annual charge for an average band property rise £4.43 (3.63%) to £126.52p from April 1st 2020. The Council has the 23rd lowest council tax charge out of 201 district councils.

Village Highway Gullies and Drains.

I am grateful to the County Council for attending to the gullies and drains that needed attention. During January jetting works and CCTV investigations were carried out to overcome the issues. Further works are scheduled to fully resolve outstanding problems on Main Street, therefore the investigations are on-going.

I have been asked to thank residents for their co-operation in moving their vehicles to allow access to the gullies and drains.

David Snartt
Borough Councillor Forest Bradgate.



Newtown Linford Parish Council

Serving the people of Newtown Linford

The nights are drawing out now and I, for one, am looking forward to the Spring and some warmer weather.

The Parish Council are currently working closely with Newtown Linford Primary School in organising a Tree Planting Day at Groby Lane Cemetery in late March/early April, when I hope we will see some brighter days.

All pupils will have the opportunity to plant a sapling, awarded to our Parish by The Woodland Trust.

There will also be the chance for residents to claim a free tree or two.

If you would like to be involved and can help with planting, or would like a free tree, please let me know via the contact details below.

Further information will follow through the usual channels.

In other news, three residents have kindly volunteered themselves to be our new Community Flood Wardens.

Scott Raynor, David Rigg and Graham Capewell, will attend training at the end of this month to learn all things flood related and will work in liaison with other agencies.

The role of a Community Flood Warden is to:

Monitor local conditions.

Distribute flood related information to residents and raise awareness of the local community of the flood risk.

Encourage residents to sign up to the Environment Agency Flood Warning System.

Sign post residents to responsible authorities.

Raise assistance requirements to responsible authorities on behalf of the local community.

Report number of flooded properties to responsible authorities.

Gather information on the current conditions and report to responsible authorities.

Additional training is also available to Community Flood Wardens, who wish to have the ability to assist the Highways Authority in closing roads due to flooding, as and when required or requested to do so.

I would like to take this opportunity on behalf of Councillors to thank Scott, David and Graham, for their proactive approach and for their

commitment to our community.

If you are interested in a volunteer role within the Parish, please do contact me for an informal chat.

On with more news...

Bob Bown Memorial Field

Lead Councillors for the Bob Bown playground, are currently reviewing arrangements for the supply and inspection of equipment.

We hope the replacement Springer will be installed in time for the better weather and are looking into alternative football goals.

If you have any comments or suggestions to make regarding the facilities at Bob Bown, please get in touch.

Churchyard and Cemetery

The regular maintenance team will resume grass cutting later this month and the Spring bulbs should soon make an appearance.

The newly donated seat for the extension area of the Cemetery has been purchased and an ideal location has been identified. Work will be carried out imminently.

We have also received a generous donation of two further trees for the Cemetery – a Copper Beech and a Whitebeam and these too, have been planted in the new extension area. Many thanks to Brian Anderson for planting them both.

Reports

Please note, some of the older reports are more complex and require further investigation.

02/10/19 – Concern for bollards, Main Street – In progress and expected imminently LCC

02/10/19 – Blocked drains, Markfield Lane – In progress LCC

02/10/19 – Blocked drains, Grey Crescent – In progress LCC

02/10/19 – Debris accumulation to footpath, Markfield Lane – In progress and chased following storm debris 10/02/20 LCC

02/12/19 – Missing Finger Board Signs – Ulverscroft/Priory Lane – Completed 04/02/20

02/12/19 – Issue with footpath, Roecliffe Road – In progress and expected by the end of March LCC

07/01/12 – Main Street Road Sign, Main Street/Markfield Lane – On order. Requested removal of old sign 22/01/20 CBC

13/01/20 – Damage to footpath, Bradgate Road – Completed 17/01/20

15/01/20 – Damage to railing, Markfield Lane – Completed 17/01/20

27/01/20 – Culvert Debris Build Up, Markfield Lane – In progress LCC

KEITH SMITH (ANSTEY) LTD



6 STADON ROAD ANSTEY LE7 7AY - TEL: 0114 2342393 - sales@keithsmithltd.co.uk

FAST FREE LOCAL DELIVERY



BOSCH
WAB28162GB
Washing Machine
✓ 1400rpm Spin Speed
✓ 6kg Load Capacity
✓ A+++ Rated
✓ Express Wash
✓ 15 Programmes



Now Only **£299.99**



Blomberg
TSM1750U
Built-In Larder Fridge
✓ Auto-Defrost
✓ 5yr Guarantee
✓ A+ Rated
✓ Reversible Door
✓ Telescopic Shelf



Now Only **£299.99**



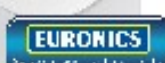
Blomberg
LWF274411W
Washing Machine
✓ 1400rpm Spin Speed
✓ 7Kg Load Capacity
✓ 28 Min Fast Full Load
✓ 16 Programmes
✓ A+++AB Rated



Now Only **£299.99**



SAMSUNG
WW70J5556MW
Washing Machine
✓ 1400rpm Spin Speed
✓ 7kg Load Capacity
✓ A+++ Rated
✓ 5yr Guarantee
✓ White



Now Only **£359.99**



BOSCH
SMV40C40GB
Built-In Dishwasher
✓ 12 Place Settings
✓ 4 Programmes
✓ Time Delay
✓ Noise Level 50db
✓ A+ Rated



Now Only **£399.99**



ZANUSSI
ZWF81443W
Washing Machine
✓ 1400rpm Spin Speed
✓ 8kg Load Capacity
✓ A+++ Rated
✓ 2yr Guarantee
✓ 14 Programmes



Now Only **£299.99**

Fitted Kitchens

We are pleased to announce that we are now agents for A.W.E Kitchens and Bedrooms Who specialise in Bespoke made to measure kitchen & bedroom furniture
Please call in for further details

Internet Prices with Personal Service

"Ask About our Same Day/Next Day Installation and Removal Service"





COVERING *Martin Page* YOUR LOCAL

The Newtown Linford Area

Tree Surgeon



charnwood

Have you considered your trees may need some maintenance from time to time. Are your trees maybe too tall blocking light, unsafe or untidy? Or maybe you need to remove that stubborn stump. Do your hedges, Conifers or shrubs need trimming. With 30 years of experience working with trees in your area, I would be pleased to offer you free advise and a free quotation.



I also sell high quality firewood logs



- Fully Insured
- Local family business
- Clean & tidy service



call me now on

01530 251312

Constantly Recommended

PEST CONTROL

DOMESTIC • COMMERCIAL • INDUSTRIAL



Guaranteed Service
No Add On Charges

Wasps * Fleas * Ants Rodents
Bird Control * Fly Killers * Fly Screens *
Pet Screens * Feminine Hygiene

FOR A FAST, RELIABLE RESPONSE

CALL FREE ON

0116 234 0078



www.targetpestcontrol.co.uk | info@targetpestcontrol.co.uk

31/01/20 – Request for Dog Waste Bin, Main Street – In progress CBC
10/02/20 – Storm Debris on Footpath, Main Street and Markfield Lane –
In progress LCC
10/02/20 – Request for Dog Waste Bin, Ulverscroft Lane – Granted
14/02/20 CBC

A Message from the Parish Council Chairman

“I was very saddened to hear of the recent passing of Janet Neaverson. On a personal note I have known Janet since I joined the Parish Council 10 years ago. She was a tremendous Councillor who spent a great deal of time caring for the village environs and pathways during the 50+ years that she served her community. A strong and independent woman who was always prepared to state her views and hold by them, she always acted in the best interests of her village. Her knowledge of Newtown Linford was second to none and, as keeper of the village archive, she was always the source of interesting and useful information.

I very much appreciated her help and guidance, and her dry sense of humour! As she became more frail her stoicism and determination to keep going was admirable and she was very much missed upon her retirement from the Parish Council almost 4 years ago. My thoughts are with Janet's family and friends at this sad time.”

Sue Pritchard

As always, if I can be of any assistance to you, please do not hesitate in contacting me.

Best wishes, **Hannah Shaw, Parish Council Clerk**

Tel: 01530 249945, Email: clerk@newtownlinford.org.uk



IDC Home Maintenance

Painter Decorator and Property Maintenance

NO JOB TOO SMALL

**From changing a light bulb to complete house re-decoration.
For all the jobs you need to do but simply don't have time.**

For a free quotation please call Ian on:

**01530 245461 or 07885 541428
3 The Nook, Markfield, Leicestershire**

**Web site: www.idchomemaintenance.co.uk
Full Tradesman Liability Insurance held**

Booking of Village Facilities

**To book the Village Hall
call Pat Wood on 242251**

Consult

WALTER MILES

(Electrical Engineers) LTD

Est. 1928

For All Your Electrical Requirements

**LIGHTING, HEATING, POWER, REPAIRS, RENEWALS
AND MAINTENANCE**

Member of the Electrical Contractors' Association and N.I.C.E.I.C

Office and Works Marshall House, West Street, Glenfield, LEICESTER, LE3 8DT
Telephone 0116 287 2400 Fax 0116 287 2552

E-Mail office@waltermiles.com

Contributions to Village Magazine

Can we have your contributions for the **April 2020** issue by **15th March 2020** please. **Send to the Editor, Carole Heubeck, 5 Grey Crescent, Newtown Linford (01530 244790).**

**E-mail newtownvillagemagazine@outlook.com &
heubeck111@btinternet.com**

Please could you send any emails to the above email addresses. If you do not receive an acknowledgement of your email within 3/4 days - please contact Carole, the Editor direct on the above number to check we have received it.

The opinions expressed by the contributors are not necessarily those of the Editors and they reserve the right to amend, shorten or not print any article or advertisement submitted for publication. Whilst every effort has been made to ensure the accuracy of the information printed in this magazine, and advertisements are accepted in good faith, no liability can be accepted for loss, damage or claim of any kind incurred by the reader

Printed by Barkers Printers Leicester 0116 319 0915



For all of your legal requirements locally

We can help you with the following services:

- Buying & Selling a Property
- Transfers of Ownership
- Re-Mortgages
- Lasting Power of Attorney
- Wills
- Divorce & Separation

For a competitive quote call

0116 2364875

Florence Villa, 5 Leicester Road, Anstey, Leicestershire LE7 7AT
Email: info@garrettlongsolicitors.co.uk

www.garrettlongsolicitors.co.uk

Anstey & District

Est. 1992 Independent Funeral Services

0116 234 0548

We can take care of every detail, advise and help you on each and every step of the way.

- Qualified Funeral Directors
- Floral Tributes arranged
- Hearse, Limousines and alternatives available
- Monumental Service
- Car parking available
- Online tribute and donation profile
- Catering suite
- Chapels of rest
- Funeral plans available
- 24 hour service



Funeral arrangements can be made in the comfort of your own home if preferred.



Golden Charter 
Funeral Planning for Life Ltd.

Talbot House, Leicester Road, Anstey, Leicester, Leicestershire LE7 7AT
Email: talbotthouse@ansteyfunerals.com Website: www.ansteyfunerals.com