

# Newtown Linford Magazine



**ISSUE NUMBER 195**

**Platinum Jubilee Edition**

## **CONTENTS**

Church News	2, 21/22
Coffee & Cake	5
From the Park	6
Jubilee Village Party	8/9
Choral Society	10
1John Nixon Art Exhibition	12
Village Cricket Competition	14/15
Gardening Club	16
Tennis Club	18
NGS Mountain Ash & others	25
Have you met the Queen?	26/28
Wildlife Walk & Biodiversity Gr.	29
Brownie News	30
Boules	31
Village Archive	31
Laying up of the Guidon	32
David Snartt News	35
Neighbourhood Watch	38
Parish Council	40



**June 2022**



# Paint Wizard

## Mobile Vehicle Body Repairs

All work completed at your home  
at your convenience  
or if you have no off road parking  
we offer a free collection and delivery service

Free Collection & Delivery Service Available

Call for a No Obligation Quote

**07850 456696**

**Proprietor Paul Beaver, Grey Crescent, Newtown Linford**



Panel Resprays  
Scratch Removal  
Stone Chip Repair  
Windscreen Repair  
Colour Restoration  
Alloy Wheel Refurbishing  
Machine Polishing & Glaze  
Colour Code Bumper Resprays  
Colour Code Wing Mirror Resprays

Consult

## WALTER MILES

(Electrical Engineers) LTD

Est. 1928

For All Your Electrical Requirements

**LIGHTING, HEATING, POWER, REPAIRS, RENEWALS  
AND MAINTENANCE**

Member of the Electrical Contractors' Association and N.I.C.E.I.C

**Office and Works** Marshall House, West Street, Glenfield, LEICESTER, LE3 8DT  
Telephone 0116 287 2400 Fax 0116 287 2552  
E-Mail [office@waltermiles.com](mailto:office@waltermiles.com)

## Horseshoe Cottage Farm

Luxury bed and breakfast accommodation



**Award Winning B & B.**

Winner of Leicestershire's B&B/  
Guest Accommodation 2018 and  
Leicestershire's Best Breakfast  
2018

Previous winners of Outstanding  
Customer Service & Sustainable  
Tourism in the East Midlands

**Roecliffe Road, Hallgates, Cropston, Leicestershire LE7 7HQ**

**Tel: + 44(0)116 2350038**

**Email: [lindajee@horseshoecottagefarm.com](mailto:lindajee@horseshoecottagefarm.com) Website [www.horseshoecottagefarm.com](http://www.horseshoecottagefarm.com)**

# The Bradgate

Group Parish



**T**his month we rightfully – and hopefully joyfully – celebrate the remarkable achievement of our Queen in reaching her Platinum Jubilee. 70 years of service to the nation, through unprecedented and unpredictable times of change.

As we've seen her increasing frailty this past year – I write on the day she was unable to be in Parliament for the State Opening for the first time in over half a century – it has perhaps reminded us of what a prize we have had in her diligent and unceasing dedication to her role, to the nation and the Commonwealth. Even in the shadow of the loss this past year of her beloved husband, her uncomplaining and compassionate leadership has been the gracious presence which this country has always been able to rely on.

As we celebrate with the extended Bank Holiday weekend – with all the many community events we have the opportunity to enjoy – let me remind you of Queen Elizabeth's words in her very first Christmas broadcast as Monarch in 1952, looking forward to her coronation in 1953:

*I want to ask you all, whatever your religion may be, to pray for me on that day - to pray that God may give me wisdom and strength to carry out the solemn promises I shall be making, and that I may faithfully serve Him and you, all the days of my life.*

As we thank God that she has shown that wisdom and strength in so many circumstances, let us continue to pray for her as she continues to serve, drawing inspiration from her faithfulness and her faith. As she said in the year of her Golden Jubilee:

*I know just how much I rely on my own faith to guide me through the good times and the bad. Each day is a new beginning, I know that the only way to live my life is to try to do what is right, to take the long view, to give of my best in all that the day brings, and to put my trust in God.*

*Like others of you who draw inspiration from your own faith, I draw strength from the message of hope in the Christian gospel.*

**Richard Trethewey, Rector of All Saints' Newtown Linford**



## VILLAGE DIARY

### June

- 2nd Bradgate Park Street Party and Old John Lit up in the evening  
3rd Village Jubilee Party  
10th/11th Choral Society  
14th Boules  
25th/26th John Nixon Art Exhibition

### July

- 3rd Village Cricket Competition  
13th Parish Council Meeting  
17th Tennis BBQ  
19th Boules



### Regular events

#### Mondays

- 9.30 Slimming & Fitness, The Linford  
1.30 Dance Fitness for 50+ Linford  
5.30 Brownies at "The Linford"  
Bell Ringing 8pm at the Church

#### 4th Tuesday of the month

Gardening Club

#### 4th Wednesday of the month

Gentleman's Club Bradgate PH

#### Wednesdays

10.30 and 6.30 Bodyblast Classes The Linford

Quiz nights at The Linford 8pm start

#### Thursdays

11.15 Coffee Mornings Village Hall

6.15



## SYKES JEWELLERS

### WATCH, CLOCK & JEWELLERY REPAIRS

WATCH BATTERIES AND STRAPS FITTED WHILE YOU WAIT

8 BRADGATE ROAD, ANSTEY

TEL: 0116 236 2510

[sykesjewellers.co.uk](http://sykesjewellers.co.uk)







## Coffee & Cake Rota June/July 2022

### June

2<sup>nd</sup> Glennis Meredith, Mary Clarke, John Castle 242897:

0116 319011

9<sup>th</sup> Maria Simms, Vicki Kerr, Janice Cook 07974085434:

07904123603

16<sup>th</sup> Lesley Cook/Chris A/Gay Redstone/Ann Scrine

245208: 242432: 01162 351625: 481928

23<sup>rd</sup> Carol Ann, June Hallam, Sue Howard 243433: 0116 2304808:

245373

### **On the Lawn – Gable Cottage 32 Main Street #**

30<sup>th</sup> Casey Pearson, Jenny C, Mandy James, Maria W 249259



### July

7<sup>th</sup> Janet & David Brunton 242662

14<sup>th</sup> Sue Morran, Sarah Brown, Teresa Calvert

07810 116641: 07811 166161: 07469 719018

21<sup>st</sup> Joe & Claire Costello with Bakers help

249613

### **On the Lawn – The Vicarage Main Street #**

28<sup>th</sup> Margaret Bloor, Sue Clarke, Sue Birkett

07713457414/242000/244317

*Coffee Morning*

*Everyone Welcome*



**# The summer months see the start of Coffee & Cake on the Lawn once a month at different gardens in the village**

**Please note if the weather is bad we will be in the hall as usual**

Please swap with someone else if you are unable to do your duty.

Pass on the hall key to the next people on duty.

An opportunity for everyone to catch up on Village news and activities and to meet your fellow neighbours

Rota Volunteers - If you are struggling with putting the Tables and Chairs out for your duty Joe Costello 249613 has offered to help if around and will ask someone else to help him as well.

**Carol Ann**

## **From the Park**

This summer at Bradgate Park there will be a range of events and activities on site that help to inform our visitors about the park, make their visits all the more enjoyable and also encourage new audiences to visit.



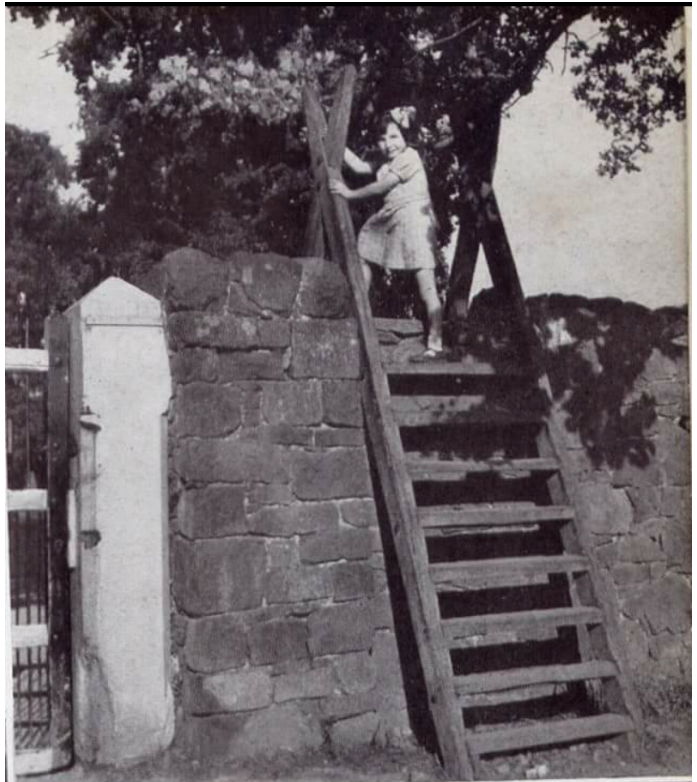
### **The Platinum Jubilee**

Thanks to funding from the Arts Council England and the National Lottery Heritage Fund, we're embarking on a new project - The Park. The Past. The Platinum - to celebrate the last 70 years of memories at Bradgate Park in commemoration of this year's Platinum Jubilee.

Bradgate Park is landscape jam-packed full of memories, from first dates to first steps. With your help, we're creating a piece of public art inspired by these memories, which will be mounted on the side of the Deer Barn for the public to enjoy.

We're also creating an Oral History Archive that explores the meaningful connections that people have to the park - from picnics to pageants, visiting to volunteering, long rambling hikes to a quick meander down the carriage-way.

We want to hear your stories! For more information about contributing to the archive, contact [education@bradgatepark.org](mailto:education@bradgatepark.org) or call 0116 236 2713 ext. 34.



**On the 2nd June**, we'll be starting the long Bank Holiday weekend in



style! A Jubilee street party will be coming to the carriageway from 12.30 to 5pm, featuring live music, a BBQ, craft activities, and the unveiling of our new artwork.

Later in the evening, the iconic Old John will be illuminated as a beacon, joining many other landmarks across the UK to commemorate Her Majesty the Queen's Platinum Jubilee.

### **Outdoor Theatre**

The much-loved Quantum Theatre will return to Bradgate Park this summer with two productions in the Deer Meadow in the centre of the park – on 18<sup>th</sup> and 19<sup>th</sup> August, family friendly Peter Rabbit shows will take place at 11am and 2.30pm, whilst on Friday 15<sup>th</sup> July at 7pm, A Midsummer Night's Dream offers a unique opportunity to see Shakespeare's best-loved comedy in a beautiful setting.

Tickets for these shows are available online or by calling 0115 236 2713.

### **Walks & Talks**

In addition to all of this, Ranger and volunteer-led walks and talks run

throughout the season, including:

**Old John Tower walk, 2<sup>nd</sup> July at 2pm** - This unique tour offers a rare opportunity to see inside the Tower and enjoy the amazing panoramic views of Leicestershire.

**Young Deer Walk, 11<sup>th</sup> June and 18<sup>th</sup> June at 9am** - Two special guided walks during the calving season. Explore the Park with a Ranger looking for newly born calves and fawns.

**Summer Photography Walk, 18<sup>th</sup> June at 1.30pm** – A circular photo walk, open to anyone interested in creating better photos of Bradgate Park; no experience is needed.

**Geology Walk, 20<sup>th</sup> June at 1pm - Dr Jack Matthews**, Geoheritage Officer at The National Forest Company, will be leading a geology walk looking at a wide variety of rocks, covering a time span of 560 million years!

**Ramble with a Ranger, 25<sup>th</sup> June at 9am** – if our normal 2 hour walks aren't enough for you, this leisurely 6 hour walk will cover the park literally from top to bottom, from 560 million years ago to today.

**Archaeology of Bradgate Park – 29<sup>th</sup> July, 11am** - Join Peter Liddle and Professor Richard Thomas on a guided tour which will lead you to some of the most significant archaeology sites within the park. Further details of all of these, including online booking, can be found on our website at <https://www.bradgatepark.org/Pages/Events/>

*James Dymond, Director, Bradgate Park Trust.*

## **Newtown Linford Platinum Jubilee Off Road Street Party**

**At the Linford Club  
Friday 3rd June 2022**



**CALLING ALL NEWTOWN LINFORD CAKERS  
YOUR VILLAGE PARTY NEEDS YOU!!!**

**JUBILEE CAKE-OFF COMPETITION**

**All entries to be in by 1pm on 3rd June—Judging will be anonymous.  
Please supply a list of allergens as cakes will be shared with everyone**





## **Newtown Linford Platinum Jubilee Off Road Street Party**

At The Linford Club, Main Street, Newtown Linford

Friday 3<sup>rd</sup> June 2022

Starts at 12.30 (Gate Opens at 12.00)

Bring your own picnic food and picnic ware – Bar will be open for drinks

Chairs and Tables supplied – seats available inside and outside



Live Music 🎵

Activities for children including facepainting



BBQ



Fun and games for all the family including Tug 'o War

Village Jubilee Bake-Off Competition

See separate poster for full details

**Tickets £2 per person – buy now from The Linford Club**

**to avoid disappointment**





NEWTOWN LINFORD CHORAL SOCIETY

presents

# A JUBILEE CELEBRATION

Sing  
Rhythm of Life  
Wonderful World  
& more

The Prayer  
Under the Boardwalk  
You Raise Me Up

**Musical Director: Sue Ford**

**Village Hall**

**Newtown Linford**

**7.30pm Friday 10th & Saturday 11th June**

**Tickets: £10 (U/18 & Students £5)**

**Contact: 01530 243822**

**Licensed Bar**



Newtown Linford Choral Society

Registered Charity No. 1079843



## Choral Society

The Choral Society is in the middle of rehearsals for its Summer Concert, which will be held in the Village Hall on Friday 10th and Saturday 11th June. As a result of the pandemic it's not been possible to hold a concert during the past two summers, and we're very glad to be able to do so now.

To suit the mood of the season, the music will be light hearted and popular, including for example 'Under the Boardwalk', 'What a Wonderful World', and a medley of Broadway favourites from the past. We will also be celebrating the Platinum Jubilee by including some items which are said to be favourites of the Queen. There will be a licensed bar, so why not come and celebrate with us!

Ticket prices are £10 for adults, or £5 for full time students, and obtainable by ringing 01530 243822.

### Peter Sayer



**GARDEN MAINTENANCE, DEVELOPMENT AND MANAGEMENT**

- Complete and partial planting schemes
- Aftercare for perfect results
- Expert tree, hedge and lawn care

**Freedom to relax and enjoy your beautiful garden**

**Andy Wormington**  
5 Long Close, Anstey, Leics LE7 7QG

0116 234 0338  
07773 775152  
a.wormington@btinternet.com

**BMC** Bradley Millon College

**AJB CERAMICS**

**Hard Floor Restoration**

**All Tiled Surfaces Repaired  
Cleaned, Polished  
& Sealed**

**Qualified Tiler  
Established 2004**

**Free Demonstration & Quotation  
Call Andrew**

**07838 155153**

**65 Station Road Glenfield**

**Facebook Page ajbceramics  
www.ajbceramics.co.uk**

# John Nixon Art Exhibition

25th and 26th June

**Newtown Linford Village Hall**



An exhibition of John Nixon's paintings and drawings will be held in Newtown Linford Village Hall over the weekend of 25th and 26th June 2022.

Come and join us for coffee and cake between **10.30 and 12.30 on Saturday 25th June**, when you can peruse his paintings.

If you would like to have one (or more) of them please make a donation to Action for Pulmonary Fibrosis, details of which will be available on the day.

We will also open the Hall between **2pm and 4pm on Saturday afternoon**, and again between **10.30 and 12.30 on Sunday morning** should you not be able to join us on Saturday morning.

Coffee and cake on Thursday mornings was the highlight of every week for my father during his later years, and to be able to meet people who knew him and enjoyed his artwork will be lovely.

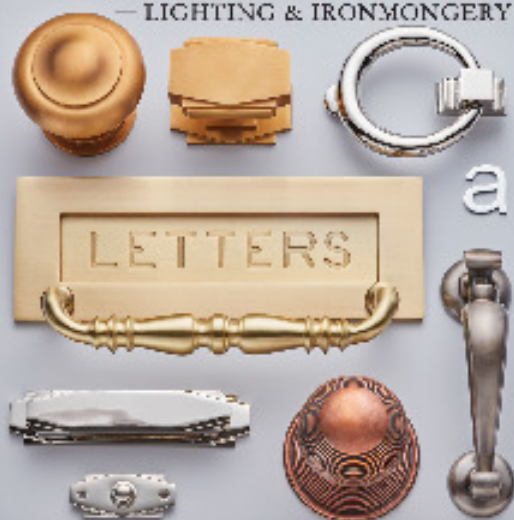
Best wishes

Celia Dyson (nee Nixon)



# BROUGHTONS

— LIGHTING & IRONMONGERY —



The Old Cinema Cropston Road Anstey Leicestershire LE7 7BP

0116 232 3175

[www.broughtons.com](http://www.broughtons.com) [sales@broughtons.com](mailto:sales@broughtons.com)

## Roy Green

LETTINGS & ESTATE AGENTS

MEMBERS OF THE  
ROYAL INSTITUTE  
OF CHARTERED SURVEYORS

First Floor 15 The Market, Anstey, Leicestershire LE7 7BP

Contact us on [office@roygreen.co.uk](mailto:office@roygreen.co.uk) or call (0116) 235 3009

### Our Services

Fully Managed – 8% plus VAT

Let only - £525.00 plus VAT

Tenancy set up fee - £250.00 plus VAT  
(only payable on New or Change of tenancies)

Members of the Royal Institute  
of Chartered Surveyors

Up to date integrated property management  
software

### NO EXTRA CHARGES FOR

- Tenancy referencing
- Inventory of property
- Floor plan for advertisement

We have 65 years experience in property management.



Roy Green Lettings & Estate Agents



roygreenlettings



Roy Green Lettings





# Problems With Your Feet?

Home Visits & Cropston Surgery

- ∞ Ingrowing Toenails
- ∞ Fungal
- ∞ Corns
- ∞ Callous
- ∞ Verrucae



Johanna Partridge MCFHP MAFHP

Foot Health Practitioner

CALL 0116 235 1971

Or 0788 781 7370



Registered Member of the British

Association of Foot Health Professionals

## E.W. Goddard & Sons

(Established 1970)

**QUALIFIED PLUMBERS  
Bathroom and Tiling  
Specialists**

**All Building Work  
and Renovation**

\*\*\*\*\*

305 Markfield Lane  
Markfield LE67 9PR

Telephone

01530 245316 or 0116 2311672  
07961 319908 or 07961 319907

**Village Cricket Competition,  
returns on Sunday 3<sup>rd</sup> July**





## Village Cricket Competition, returns on Sunday 3<sup>rd</sup> July

One of the highlights of the year for the community of Newtown Linford, the Village Cricket Competition, returns on Sunday 3<sup>rd</sup> of July, promising to be bigger and better than before. Now in its 6<sup>th</sup> year, the tournament was set up to give non-cricketers and occasional part-timers an opportunity to play at the cricket club in a fun, competitive and often comic spectacle.

Four teams will take part, reigning chumps The Linford Lions, the Newtown Knights, the Grey Grizzlies and the Bradgate Braves, playing a modified version of the real thing with coloured kit, a softer ball, no need for protective equipment and a generous helping of Dutch courage. Virtually all of the players are residents of Newtown and anyone who'd like to join in this year should contact one of the organisers, Paddy or Scott. Every year more and more spectators turn up to enjoy the club bar, the sunshine, the cheering and jeering of friends and neighbours, as well as partake of the pizza van or their own picnics. This year the aim is to have commentators to guide the fun, and to have some bouncy play areas for younger children.

Please do mark the date in your diary and come along, either as a player or a fan. None of this could of course be possible without our many sponsors, both individual and corporate, who provide so much help behind the scenes. Particular thanks goes to The Access Group who are the main sponsors of the tournament. The organisers would also like to thank the many volunteers who help with umpiring, scoring and serving behind the bar, and the Cricket Club itself for hosting a great day for the village.

If you'd like to take part or support the competition, please contact Paddy on 07850 327654 or Scott on 07535 365887.



## Newtown Linford Gardening Club

Around 100 members filled the Village Hall in May to hear Jack Willgoss from Wildegoose Nurseries, Shropshire talk about violas. He has the largest collection of violas in the country and has won many awards for them. He told us all about his nursery and the wide variety of violas that there are. We were surprised that some can grow very large and that they need a fair bit of room if they are to flourish. He brought some violas for our members to buy and there were not many for him to take home afterwards.



We are going to visit his nursery in August and so popular was he with the members that the coach was almost filled before the evening was done.

As usual our summer months are spent away from the Village Hall. We have a trip to Rutland Garden Village booked for June and our traditional Summer Garden Party will be held at Mountain Ash in July. In August, as well as visiting Wildegoose Nurseries we will also see the Old Herbery, a very interesting nursery in an unusual setting.



After that, we will be back in the Village Hall for our autumn meeting including the celebrity evening with the famous TV presenter James Alexander-Sinclair.

We meet on the fourth Tuesday of the month in Newtown Linford Village Hall and anyone interested in our activities can contact the Secretary (tel.01530 242452) or e-mail us at [32couling@gmail.com](mailto:32couling@gmail.com) . Visitors to a particular meeting are also welcome for only £3.

**Anne and David Couling**

# Derry's Nurseries



Est 1976. Well worth a visit....

Main Steet, Cossington LE7 4UU

**Tel (10509) 812815 Open 7 days a week**

Campervan Café open Friday, Saturday & Sunday

Wide variety of  
evergreen shrubs &  
seasonal  
bedding  
now in stock to give  
your garden new life  
for the Summer.



**Time to put the Summer Bedding in!**

**Loyalty  
Scheme**

**Now available**

Seasoned Hard-  
wood Logs, Coal  
& Kindling  
Supplied in  
nets , bulk bags  
or loose loads

**Full  
size  
trees  
now  
in  
stock**



**FREE DELIVERY TO LOCAL AREA**

**Derry's Nurseries NOW ONLINE**

**at [www.derrysnurseries.com](http://www.derrysnurseries.com)**

**Email: [hello@derrysnurseries.com](mailto:hello@derrysnurseries.com)**

## **Newtown Linford Tennis Club**

Our first Supper Club on Tuesday 26<sup>th</sup> April - A lovely sunny evening to play tennis and eat homemade pizzas kindly cooked by Jason Crockett. A great evening held the last Tuesday of the month, don't miss the next one on 28<sup>th</sup> June. Sign up in the clubhouse if you want food or call 01530 243433

### **Jennie Whiteheads Summer Morning**

#### **BBQ & Village Sweet Trolley!**

**Sunday 17th July 12noon**

Everyone welcome for this Club event held for many years. At the courts, a family and friends day with a posh BBQ, super salads and the return of the Newtown Linford sweet trolley!

**Tables of 8**

**Bouncy Castle**

**Tickets £20 Adults - Children over 2 - £10**

To book your table call Carol Ann 01530 243433  
or Carolyn 01530 249173

Please note there will be a table you can join

Jennie passed away in 2019. She was involved with the Club for many years and was still our President until her death. She held this event annually at her house, it was always a village family social event for all ages. The Club is organising this in her memory and to thank her for all those years of support.

### **Club Night**

Please note last month's Magazine's article re Club Night meant to say All adults members are welcome at Club Night and any intermediates who feel confident playing a rally

### **Tennis Club Donation**

Thanks go to James and Celia Booker for their kind donation of £500 to the Club funds following a piece of lands being gifted to them from Jennie Whitehead's estate. Jennie as previously said was still President of the Club a after many years of involvement as both a player and supporter until her passing in 2019



# KEITH SMITH (ANSTEY) LTD



6 STADON ROAD ANSTEY LE7 7AY - TEL: 0116 2362395 - sales@keithsmithltd.co.uk

## FAST FREE LOCAL DELIVERY



**ZANUSSI  
ZWF845B4PW**  
Washing Machine  
 ✓ 1400rpm Spin Speed  
 ✓ 8kg Load Capacity  
 ✓ E Rated  
 ✓ 2yr Guarantee  
 ✓ 14 Programmes

**EURONICS**  
Sold as an agent of Euronics Ltd.

Now Only **£389.99**



**BOSCH  
WAJ28008GB**  
Washing Machine  
 ✓ 1400rpm Spin Speed  
 ✓ 7kg Load Capacity  
 ✓ D Rated  
 ✓ Express Wash  
 ✓ 15 Programmes

**2 years** **EURONICS**  
Sold as an agent of Euronics Ltd.

Now Only **£369.99**



**Blomberg  
LWF174310W**  
Washing Machine  
 ✓ 1400rpm Spin Speed  
 ✓ 7Kg Load Capacity  
 ✓ 28 Min Fast Full Load  
 ✓ 16 Programmes  
 ✓ D Rated

**3 year** **EURONICS**  
Sold as an agent of Euronics Ltd.

Now Only **£349.99**



**HOTPOINT  
NSWE743UWS**  
Washing Machine  
 ✓ 1400rpm Spin Speed  
 ✓ 7kg Load Capacity  
 ✓ D Rated  
 ✓ 45min Rapid Wash  
 ✓ White

**EURONICS**  
Sold as an agent of Euronics Ltd.

Now Only **£299.99**



**BEKO  
CIFY81X**  
Built-In Single Oven  
 ✓ 5 Functions  
 ✓ 66 Ltr Oven  
 ✓ Fan Assisted  
 ✓ Stainless Steel  
 ✓ A Rated

**EURONICS**  
Sold as an agent of Euronics Ltd.

Now Only **£229.99**



**BEKO  
WEC84P64E2W**  
Washing Machine  
 ✓ 1400rpm Spin Speed  
 ✓ 8kg Load Capacity  
 ✓ A Rated  
 ✓ Fast Washes  
 ✓ White

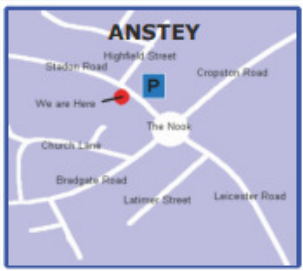
**EURONICS**  
Sold as an agent of Euronics Ltd.

Now Only **£369.99**

### Fitted Kitchens

We are pleased to announce that we are now agents for A.W.E Kitchens and Bedrooms Who specialise in Bespoke made to measure kitchen & bedroom furniture  
 Please call in for further details

**FREE DELIVERY**  
with  
**Personal Service**  
 "Ask About our Same Day/Next Day Installation and Removal Service"







# Cooks Farm Shop & Country Supplies



## For all your Animal, Pet & Bird Feed



Did you know that we sell:  
Equestrian Supplies - Pet Food & Supplies  
Timber, Fencing & Gates - Electric Fencing  
Bird Food including Mixes & Straights  
Pigeon Food & Supplies - Fish Food & Baits  
Point of Lay Hens & Poultry Food - Coal & Logs



Visit our Website: [www.cooksfarmshop.co.uk](http://www.cooksfarmshop.co.uk)

Markfield Lane, Newtown Linford LE6 OAB

Opening Times: Monday—CLOSED

Tuesday to Saturday 9am—5pm Sunday 10am to 1pm



# Everyone is Welcome at



66 Main Street, Newtown Linford  
Tel: 01530 244012  
[thelinford.co.uk](http://thelinford.co.uk)



*Monday - Thursday 5pm - 11pm*



*Friday 4pm - 11pm*



*Saturday 12pm - 11pm*



*Sunday 12pm - 8pm*



*Friday Happy hour 4pm - 5pm*



*(Draft beer & House Wine)*



*Cobs freshly made everyday*



*Regular entertainment - find us on Facebook for details*



*Quiz night every Wednesday*



*Room hire available*



*Free Wi-Fi*



*Sky Sport & BT Sport*



[thelinford.co.uk](http://thelinford.co.uk)  
01530 244012

[newtownlinfordclub@gmail.com](mailto:newtownlinfordclub@gmail.com)





Photos of the Queen  
for the  
Platinum Jubilee



# SUNDAY SERVICES June 2022



DATE	GLENFIELD	NEWTOWN
5th June  <b>Pentecost</b>	8.30am Holy Communion (RT)	
	10.00am Morning Worship (RT)	10.00am Holy Communion (FT)
12th June  <b>Trinity Sunday</b>		
		10.00am Morning Prayer (RT)
	6.00pm Holy Communion (RT)	
19th June  <b>First Sunday after Trinity</b>		
	10.00am Morning Worship (BH)	10.00am Holy Communion (RT)
	3.00pm All Age Worship (RT)	
26th June  <b>Second Sunday after Trinity</b>		
	10.00am Holy Communion (PH)	10.00am Morning Prayer (RT)

## Online Services

<https://www.facebook.com/allsaintsnewtownlinford/live>

<https://www.facebook.com/stpetersglenfield/live>

# CHURCH REGISTERS

## BAPTISMS



## WEDDINGS

## FUNERALS

None in the registers this month.



### Church Contact Details

Revd Richard Trethewey  
(Rector) 0116 287 1604  
[richard@allsaintsnewtownlinford.org.uk](mailto:richard@allsaintsnewtownlinford.org.uk)

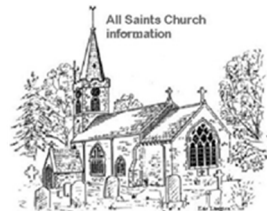
Hayley Moore (Church Administrator)  
0116 239 3768

[office@bradgatechurches.org.uk](mailto:office@bradgatechurches.org.uk)  
[www.allsaintsnewtownlinford.org.uk](http://www.allsaintsnewtownlinford.org.uk)

**Church Wardens:** Michele Petty, [m.petty@ulverscroft.co.uk](mailto:m.petty@ulverscroft.co.uk),  
Jane Woolmer, [ejwoolmer@gmail.com](mailto:ejwoolmer@gmail.com).

**Regular Events** - Bell ringer's practice: Monday 8pm

**Website:** [www.allsaintsnewtownlinford.org.uk](http://www.allsaintsnewtownlinford.org.uk)





## Easter Flowers in All Saints

We celebrated the easing of coronavirus restrictions this Easter by having a splendid display of flowers in All Saints Church.

The flower arrangers were masterminded by Sue Howard, who was herself responsible for the altar flowers and the wonderful floral cross in the Churchyard. The services over Easter were well attended and as the Church is also open daily, there were many visitors to admire both the displays and our lovely Church.

Marilyn Upstone







## NEWTOWN LINFORD OPEN GARDEN

# 2<sup>nd</sup> & 3<sup>rd</sup> JUNE

Whilst you're enjoying the Spring Bank Holiday and the Queen's Platinum Jubilee, please come and enjoy a stroll round the **2 acre garden at 'Mountain Ash'** and help raise money for the NGS's several nursing charities.

Mike & Liz Newcombe's 'Mountain Ash' garden, which is situated halfway along Ulverscroft Lane between Newtown Linford and Ulverscroft, will be open to the public on the Late Spring Bank Holiday on Thursday 2<sup>nd</sup> June and on the Queens Platinum Jubilee on Friday 3<sup>rd</sup> June **from 11.00am to 5.00pm.**

There will be stalls to browse and light refreshments will be available.

There is a toilet available with exterior access from the garden.

Admission for adults is £6.00, children are

free  
and

dogs on leads are welcome. Pre-booking is not required and tickets will be available online on the NGS website or can be bought at the gate.

The full address is :- 'Mountain Ash', 140 Ulverscroft Lane, Newtown Linford, LE6 0AJ. Parking is on the lane.



For further details and some photographs of the garden, see the NGS website – [www.ngs.org.uk](http://www.ngs.org.uk) – (put Mountain Ash into the garden finder)

---

### Bank Cottage

Also remember that Bank Cottage Newtown Linford is open by arrangement. A Traditional cottage garden set on different levels leading down to the River Lin. Providing colour all year-round but at its prettiest in the Spring. Aconites, snowdrops, blue and white bells, primroses, alliums, aquilegia, poppies, geraniums, roses, honeysuckle, Philadelphia, acers, wisteria, autumn crocus, perennial sweet pea and perennial sunflowers. some fruit trees, small pond. Full of wildlife. Contact Jan on 244865 or 07429 159910

## Meeting the Queen

It was 10 years ago, when Queen Elizabeth began her Diamond Jubilee tour in Leicestershire at the Cathedral. I was lucky enough to be included in the group of flower arrangers who were invited to decorate the Cathedral with Flowers for the visit. On the day of the visit we were given a position in the precinct to welcome the Royal Party which included the Duke of Edinburgh and the Duchess of Cambridge.

Naturally we all wore our "Sunday Best" and our leader insisted we also wear a hat. When the party entered the precinct the Queen, and the Duke, were on the opposite side to us, but the Duchess of Cambridge came over to talk to a group of Cubs and Scouts standing next to us. Then her Majesty walked across the precinct and came straight to our little group. Unknown to us she had asked specifically to meet the flower arrangers and to thank us personally. It was the most thrilling moment I can remember, she was absolutely charming and thanked us for all the wonderful displays. It was a very emotional moment and although I do not have any photographs, it is a time I will always treasure. She has left me with the most wonderful memories of a charming, petite and lovely lady.

I think we all wish her Majesty well during this very special Platinum Jubilee.

Sue Howard

## Meeting the Queen

Marion Smith,

Marion's recollections....

I met the Queen in 1950 when she was Princess Elizabeth. I was at teacher training college in Lincoln and had just become engaged to my future husband Keith.

Keith attended the Royal Air Force College, Cranwell and Princess Elizabeth was guest of honour at his passing out parade. After the parade there was a formal lunch and prize presentation. Keith had won the prestigious Flying Prize which was awarded to him by Princess Elizabeth. We were all looking forward to champagne with our lunch but this pleasure was withheld as the Princess was expecting Princess Anne at the time. Keith's mother and I were formally presented to Princess Elizabeth. When I curtsied and was introduced, the Princess did not speak directly to me but she said to Keith's mother, "You must be very proud of your son", and we were!

## **Meeting The Queen.**

In April 2017, I was privileged to be invited to receive the Maundy Money from Her Majesty the Queen when she performed this ancient ceremony in Leicester Cathedral.

On her first Maundy ceremony to be held in Leicester, the Queen gave two purses of silver coins to 91 men and 91 women, one for each of the Queens 91 years of age. A red purse contained a £5 coin, which celebrates the Centenary of the House of Windsor, and a 50p commemorating Sir Isaac Newton. A white purse contained 91 silver pennies that have been uniquely minted for Royal Maundy. The 182 people receiving the purses were placed throughout the cathedral and the Queen, in spite of her advanced age, walked to each person to present the purses. I felt very honoured to be receiving these as a representative of All Saints Church, Newtown Linford.

I was presented to Her Majesty some years previously in May 1992 in a professional capacity when she carried out the inauguration of Carsington Water in Derbyshire.

Michael Upstone.

## **Meeting the Royal Family**

I have met the Queen briefly a couple of times in my professional life, but my favourite memory is when I received a letter from Buckingham Palace inviting me to come to the Palace to receive an MBE for services to industrial archaeology and industrial heritage. The letter was delivered to the house opposite by mistake and my neighbour came across bearing the letter on a red cushion!!

I received the MBE from Prince Charles in February 2016 on a very cold day and then came home to sing in a rehearsal of the Newtown Linford Choral Society the same evening!

**Marilyn Upstone**



And from memories of meeting the Queen to one of our younger residents of the Village, Beth Raynor, who received her Gold Duke of Edinburgh Award at Buckingham Palace in May from Prince Edward. Congratulations Beth. The family celebrated with Dinner at The Savoy.



**Soul Journey**  
A recital of music and poetry from contemplatives and mystics with the Alma String Quartet



From plainsong to gospel, celtic to ragas. Evocative music and words that invite us to stillness, wholeness and joy.

*Music by Max Richter, Hildegarde von Bingen, Kala Ramnath, Morten Lauridsen.  
Words by Rumi, Hafiz, Mary Oliver, Chelan Harkin*

1st July 2022, 7.30pm  
Markfield Methodist Church (LE67 9UU)  
Tickets £10

Available from Ann 01530 242166 or Karen 07739 555015  
karensilverwood@gmail.com



## Newtown Linford Biodiversity Group



### **Wildlife Walk**

**Saturday 18<sup>th</sup> June 2pm.** Meet outside the Village Hall for a walk to Lea Meadows to see orchids and other grassland wildflowers.

### **Groby Lane verge**

A section of this verge is now a trial wildlife area and included in Leicestershire County Council's Parish Urban Wildlife Verge project. In late May, NatureSpot ([www.naturespot.org.uk](http://www.naturespot.org.uk)) will be carrying out a botanical survey (as last year with Markfield Lane verge) to find out which native wildflowers and grasses naturally occur there. They will then advise the Parish Council, and Newtown Linford Biodiversity, who will be carrying out the practical work, on the best way to manage the area. The normal practice is to not mow during the growing season but instead cut in the autumn, with the cuttings removed - this encourages native wildflowers which usually prefer a soil poor in nutrients.



### **Markfield Lane verge**

We've now got a mown path through the verge to encourage people to take a walk through the wildlife area.

### **Shire Environment Grant**

As reported in last month's Magazine, we've been helping to install the wildlife boxes in the Parish. The only ones left to be put in place are the bat and owl boxes. Volunteers from the Leicestershire and Rutland Ornithological Society and the county Bat Group have kindly offered to carry out this work; the locations for both these types of boxes need to be carefully selected, and sited fairly high up in suitable trees. This work is scheduled for mid-June.



We're delighted to report that a pair of blue tits has taken up residence in the newly-installed nest box on the birch tree in Groby Lane verge!

### **Himalayan Balsam-pulling**

In the next issue of the Magazine, look out for summer dates for Himalayan Balsam-pulling sessions in the Parish. Do come and join us - it's great fun!

**Claire Costello**

**[cecostello25@gmail.com](mailto:cecostello25@gmail.com)**

## Brownies

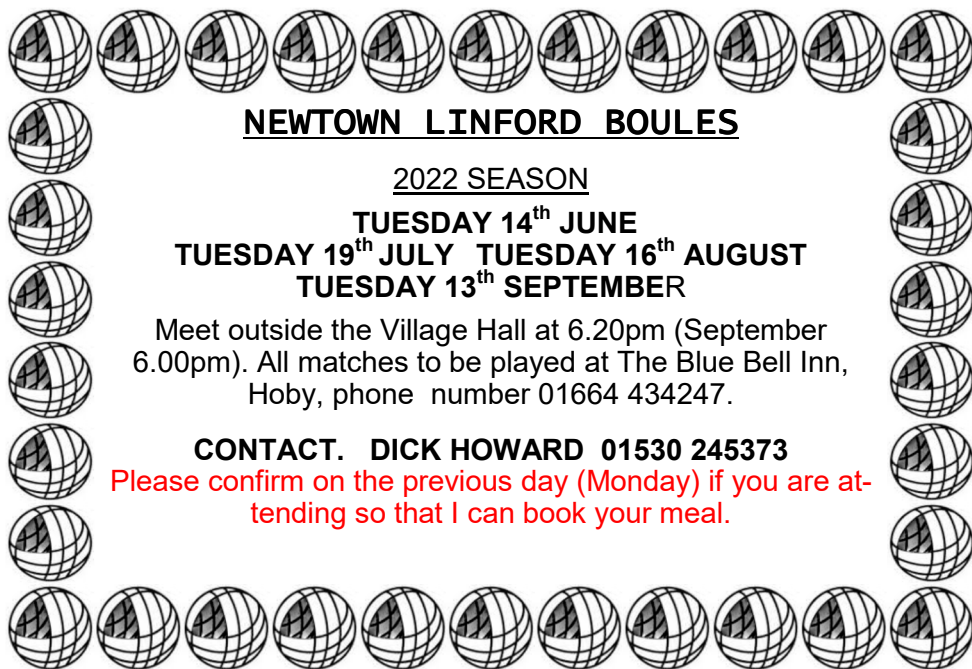
With Easter approaching, we started making Easter Bonnets. The hat had a bow on the front. We decorated the hat with glittery stickers, fabric and egg shells.

We were also busy packing boxes full of daily essentials that you have generously donated for the people of Ukraine. We divided those boxes into different age groups. Some of the boxes had nappies, toys and tooth-brushes. We hope the people of Ukraine will enjoy the boxes we packed during Easter.

Sophia Lau age 8

Each Brownies collected 100 pennies for the transport cost. Before the pennies were changed into £2 coins and attached to the shoe boxes we placed all the pennies into the shape of the girlguiding badge for "Thinking Day" in Church.





## NEWTOWN LINFORD BOULES

2022 SEASON

**TUESDAY 14<sup>th</sup> JUNE**  
**TUESDAY 19<sup>th</sup> JULY TUESDAY 16<sup>th</sup> AUGUST**  
**TUESDAY 13<sup>th</sup> SEPTEMBER**

Meet outside the Village Hall at 6.20pm (September 6.00pm). All matches to be played at The Blue Bell Inn, Hoby, phone number 01664 434247.

**CONTACT. DICK HOWARD 01530 245373**

**Please confirm on the previous day (Monday) if you are attending so that I can book your meal.**

### **Village Archive**

Items for the archive occasionally mysteriously appear through our letter-box. I am grateful for these as they are always very interesting, and the latest addition is no exception. This time it was the full script of the entertainment for the 65th WI anniversary party in 1990. Those unforgettable WI parties were held annually, and were always a sell out. They were put together by extremely talented ladies from the village, including Joan Stevenson, Betty Patrick and Sonja Pitchers.

The WI was founded in 1925, coincidentally the same year that the village properties were sold at the Bell Hotel in Leicester. The WI party script includes some very interesting facts:-

Mrs Catherine Duncan Grey had put up for auction the Bradgate Estate, which had been in her family since the Middle Ages. Some of the tenants managed to buy their own houses which brought great applause from the auction room. Others saw their homes sold over their heads and had to leave. Some very good prices were paid. Old Post Office Row on Main St, was sold for £250 (the whole row). Lane End Farm on Markfield Lane, fetched the highest price, being sold to the tenant for £3650, which included 127 acres. The entire estate, the whole of Newtown Linford and parts of several other villages, raised a record amount for a Leicester Sale of £226,110. Cont on next page



The 1920's was a time of poverty and industrial unrest and in 1926 there was a General Strike. In 1928 Charles Bennion, the Chairman of the British United Shoe Machinery company bought and subsequently presented Bradgate Park to the people of Leicestershire.

**Iris Sayer**

### Laying up of the Guidon

On Saturday 14<sup>th</sup> May a special service took place at All Saints' in which the Guidon of the Leicestershire and Derbyshire Yeomanry was laid up. There was more information on this in last month's copy of the Magazine but for those of you unable to be there a parishioner has kindly shared these pictures, which include the choir at the service and the parade outside the church.

Many thanks.







# Roecliffe Tree Surgery.

Get in touch today for a free quotation, we cover all aspects of tree surgery:

- Crown Thinning
- Stump Grinding
- Hedge Cutting
- Reductions
- Pollarding



**Phone:** 07921381902 | 0116 292 9749

**Email:** [roecliffetrees@outlook.com](mailto:roecliffetrees@outlook.com)

**Facebook:** @Roecliffetrees



## Information from David Snartt.

### Proposed Development Markfield Lane.

I was pleased to see so many residents attending the last Newtown Linford Parish Council meeting to explain their concerns and opposition to the proposed development for up to 150 dwellings on land behind the houses on Markfield Lane and Leicester Road. Pegasus Group has undertaken a public consultation on behalf of Davidsons Developments to progress this proposal.

As the local Borough Councillor, I have responded to this consultation, outlining my initial concerns to this proposal. I thought you may be interested in my response which is as follows: The village of Newtown Linford is classed in the 'Other Settlements' category within the current Charnwood Local Plan hierarchy which states: 'These villages may be suitable for some small scale infill development to meet local needs. To be considered small scale, a development should be appropriate in size for the village they are in and the character of the site's location and surroundings. Any development that increases the need to travel by car will not be considered to be acceptable small-scale development'. In my view, this proposal to build 150 dwellings on this site fails this test.

The site was submitted to Charnwood Borough Council's Strategic Housing and Employment Availability Assessment (SHELAA). I believe there is agreement that this site is not proposed for allocation in the submission for examination of the Charnwood Draft Local Plan. I refer to the submission document SD/6 Appendix H (May 2021) of the Sustainability Appraisal Report, this report gives details about the site which include: Biodiversity and nature conservation: the site contains grassland and a brook (Fishpond brook), development is likely to result in isolating adjacent woodland/grassland and the loss of habitat. The scale of the site could potentially affect the character of the village. Access to a secondary school, more than 3200 metres. Access to convenience store, over 1200 metres distance to a food shop/supermarket.

In my opinion, with the information provided by both the Charnwood Local Plan 2011 to 2028 and the omission of the site from the allocations for submission for examination to the new Charnwood Draft Local Plan, this proposal would cause considerable harm with the loss of biodiversity and habitat. It is also clear from the distances provided in Appendix H of the Sustainability Appraisal Report this site is not sustainable and the car would be the main mode of transport to attend school and buy the smallest items from a food shop/supermarket. I believe the harm to develop this site would significantly outweigh the benefits when considered against the detail outlined above.

I am grateful to the residents who have sent me information on previous



activity on this site, it will be very helpful if and when a planning application comes forward. I will keep you updated on this proposed development.

### **Search for Best Hanging Basket.**

A competition has been launched to find the best hanging basket in Charnwood in celebration of Her Majesty The Queen's Platinum Jubilee. Charnwood Borough Council's open spaces partner idverde and Loughborough in Bloom are inviting residents across the Borough to put on their gardening gloves and plant-up a hanging basket to mark the Jubilee.

The prizes up for grabs are: first prize, an annual family membership for The Royal Horticultural Society (RHS). Second and third prize, £50 National Garden Gift Voucher. The closing date for entries is Sunday 31<sup>st</sup> July 2022. The judging panel will choose the best 10 hanging baskets which will be shortlisted to the final three during the first two weeks of August. Winners will be announced in September.

To enter all you need to do is: e-mail two photos of your hanging basket to [charnwood@idverde.co.uk](mailto:charnwood@idverde.co.uk), include your name, contact number and address in the body of the e-mail, mark your e-mail subject 'Hanging Basket Competition'. People can also send entries by post to: idverde Hanging Basket Competition, Derby Road Playing Fields, Cotton Way, Loughborough, LE11 5JF.

### **Council Tax Rebate.**

The first Council Tax energy rebate payments for people who paid their council tax by Direct Debit on 3<sup>rd</sup> April should have been paid into their bank accounts. This is the £150 non-repayable rebate for households in England in council tax bands A to D. To support households who are in need but are not eligible for council tax energy rebate, Charnwood Borough Council has been allocated a discretionary fund of £231,300.

For non-Direct Debit payers who meet the eligibility criteria, your household will be issued with a single use Post Office voucher. Where you have selected your bills by e-mail, the voucher will be e-mailed to you, otherwise the voucher will be sent out by post. The Council anticipate the vouchers will be issued from 18<sup>th</sup> May onwards. The voucher can be taken to any Post Office and redeemed for the £150 cash payment. The Post Office vouchers expire after three months. For further information please visit the Council's website.

<https://www.charnwood.gov.uk/pages/ctenergyrebate>





THE  
**BRADGATE**  
NEWTOWN LINFORD

# Book Your Social Event

**Loft for private and corporate functions**

**Birthday Party Celebrations**

**14 - 28 guests**

**Book your Platinum Jubilee**

**And Fathers Day Celebrations**

**Same Great Service Same Great Menu**

**Same Great Price**

**Open from 12 noon Daily**

**Tel: 01530 242239**

**Email: [contact@thebradgate.com](mailto:contact@thebradgate.com)**

**[www.thebradgate.com](http://www.thebradgate.com)**



## Newtown Linford Neighbourhood Watch - A member of the Parish Council



PCSO Katrina Hallmark attended a recent Parish Council meeting on behalf of PC Greg Moore and PCSO Mitch Jarvis and reported the following crime statistics for April:

1 x Report of Theft – Watch stolen from the pocket of a wheelchair.

1 x Criminal Damage – Damage to gate at Bradgate Park.

I have since been informed of a further report of criminal damage to a car park cash machine. No suspects have been identified at this time.

### **Bicycle Theft**

Now the weather has improved, you may be spending more time outdoors so I thought I'd remind you of the following top tips for protecting your bicycle:

- Register your bike for free with [www.bikeregister.com](http://www.bikeregister.com), the UK's only police-approved cycle database. This will help police to find it if it gets stolen.
- Take a photo of your bike and keep it with the insurance details. Make a note of the make, model and serial number.
- When parking away from home, make sure your bike is locked to a heavy-duty piece of street furniture and where possible with the lock or chain off the floor.
- Make sure the lock you use is independently tested (e.g. Sold Secure approved), the correct size and difficult for thieves to access to break it.
- At home, lock bicycles in a secure garage or shed if you have one, using a good quality U-lock or chain and padlock to a ground anchor. Consider using two different types of security devices, as often tools to attack one type of device, aren't so applicable to others.
- Mark your bicycle frame with your postcode in two separate locations if possible, one of which should be hidden.

In other news, I was pleased to hear Leicestershire Police have been graded as 'Outstanding' following an inspection report.

In a message sent on the Neighbourhood Link network, Leicestershire Police said:

*“Today (28<sup>th</sup> April), Her Majesty’s Inspectorate of Constabulary and Fire & Rescue Services (HMICFRS) has released a glowing report of Leicestershire Police following a comprehensive inspection last year, putting us amongst the top police forces in the country.*

*We’ve been rated as outstanding in three areas - Recording Crime, Prevention and Deterrence and Protecting Vulnerable People.*

*A number of areas of the force have been highlighted as innovative practice, including our work to safeguard vulnerable children after witnessing adverse experiences, and our public-focused films such as ‘Are You Listening?’ and ‘Kayleigh’s Love Story’ which have helped adults to spot the signs of vulnerability and give them the confidence to report their concerns.*

*None of the 9 areas HMIC inspected were in the bottom two categories of Requires Improvement or Inadequate.*

*There are of course areas that the report has highlighted as to where we can improve. Plans are already in place to look at these areas and the force strives to continuously improve our service.*

*Read more about the report and access the full report (via the following link):*

*<https://www.leics.police.uk/news/leicestershire/news/2022/april/leicestershire-police-graded-as-outstanding-following-inspection-report/>*

*Thank you for your continued support.”*

Well done Leicestershire Police!

Wishing you all a safe and crime free month ahead.

Best wishes,

**Hannah Shaw, Parish Council Clerk,**

**Tel: 01530 249945**

**Email: [clerk@newtownlinford.org.uk](mailto:clerk@newtownlinford.org.uk)**

### **NI56 Beat Update (21.5.22)**

Dear Residents,

I have reviewed the last 7 days of reported crime across the NL56 beat. The following have been reported to us:

Newtown Linford:

x1 Burglary - Residential property entered and keys to vehicle taken & vehicle taken - Currently under investigation.



## News from Newtown Linford Parish Council

Have you looked at the website recently?  
[www.newtownlinford.org.uk](http://www.newtownlinford.org.uk)



Greetings!

We are still looking to appoint a new Parish Councillor by co-option and to date, we have received little interest. Newtown Linford Parish Council is proactive in enhancing the services, facilities and appearance of the Village for the benefit of its residents, businesses and visitors. We are looking for a hard-working and engaged member of the community who would join with us in caring for our Parish and would be very interested to hear from anyone in the Parish who meets the necessary criteria.

If you are interested in finding out more information, please contact Hannah Shaw, Parish Clerk, via the usual channels detailed at the end of this article.

On with more news....

### **Bob Bown Memorial Field**

Thank you to those people who have contacted me with suggestions for new play equipment at the Bob Bown Memorial Field.

Ideas include a zip wire, see saw, large slide, roundabout see saw, children's exercise equipment and a skateboard balancing rocker.

I have previously looked at having a zip wire installed, however, space is limited for such a large piece of equipment due to the football pitch. They are also very costly and therefore, would be unviable for our Parish.

I will be arranging to meet with potential installers of play equipment sometime over the coming weeks, to see what options are open to us that are within our budget and would welcome further suggestions. If you recall, our most recent installations came as a result of suggestions made by park users and parents.

Newtown Linford Biodiversity are busy organising the installation of our bat and owl boxes at all three Parish Council maintained sites in June. Bird boxes and hedgehog/insect hotels have already been installed. As previously mentioned, please keep a distance away from the new habi-



tats, so as not to disturb any guests! Thank you to everyone involved.

### Cemetery and Churchyard

Now that the rebuild of the Churchyard wall is complete, I am currently looking at improving the far corner of the Churchyard. There is a large self settled, multi stemmed yew bush which could cause issues for the surrounding area if left to continue growing as it is. I will be speaking with volunteer Tree Warden, Brian Anderson and the Senior Landscape Officer at Charnwood Borough Council to see what options are available to us and of course to, Reverend Richard, for his thoughts. Ideally, it would be nice if this area could be opened up to allow easier access to graves and to provide some more seating. The one bench already in the Churchyard is very well used by visitors, so it would be great if we could extend the current seating provision somehow.

Happy Platinum Jubilee Celebrations to you all; enjoy the festivities. I'm excited to see an event has been planned at The Linford Club on Friday 3<sup>rd</sup> June from 12.30pm.



Bradgate Park Trust are also marking the occasion and kick starting the weekend's celebrations with a street style party on Thursday 2<sup>nd</sup> June. There will be live music and a barbecue. Check out their website for more details.

Stay well, stay safe.  
Best wishes,

**Hannah Shaw**  
**Parish Council**  
**Clerk**  
**Tel:01530**  
**249945**



### Dates of the next Parish Council Meeting

Wednesday 13th July 2022  
7.15pm

## Stay Fit & Active

### Dance Fitness for 50+

The Linford , Main Street

Mon 1:30 — 2:30pm

### Are you aged 50+?



Come and join us and improve your fitness level

All levels of fitness are catered for with fun filled sessions to music.

Do you want to keep active as long as you can?

Has your get up and go, got up and gone?

**Contact Mo Watson**

**Tel: 07751 504669**

**Email: mwkfa@btinternet.com**

## Booking of

## Village Hall

To book the Village Hall

call Margaret Bloor on

**07713 457414**

or email

newtownlinfordvillagehallbook-  
ing@yahoo.com

**MARTIN ALLEN**

**FLOORING &  
FRENCH**

**POLISHING**

**YOUR LOCAL  
FLOORING SPECIALIST.**

**All timber floors laid**

**All existing timber floors sanded  
and refinished**

**Any colour or finish**

**Free quotations - Call Martin.**

**0116 2165107**

**martin@martinallen.co.uk**

### Contributions to Village Magazine

Can we have your contributions for the **Joint July/August 2022** issue by **15th June 2022** please. **Send to the Editor, Carole Heubeck, 5 Grey Crescent, Newtown Linford (01530 244790).**

**E-mail      newtownvillagemagazine@outlook.com &  
heubecks@gmail.com**

**Please could you send any emails to the above email addresses. If you do not receive an acknowledgement of your email within 3/4 days - please contact Carole, the Editor direct on the above number to check we have received it.**

The opinions expressed by the contributors are not necessarily those of the Editors and they reserve the right to amend, shorten or not print any article or advertisement submitted for publication. Whilst every effort has been made to ensure the accuracy of the information printed in this magazine, and advertisements are accepted in good faith, no liability can be accepted for loss, damage or claim of any kind incurred by the reader

**Printed by Barkers Printers Leicester 0116 2120983**

# COVERING *Martin Page*

YOUR LOCAL

The Newtown Linford Area

**Tree**



**Surgeon**

**charnwood**

*Have you considered your trees may need some maintenance from time to time. Are your trees maybe too tall blocking light, unsafe or untidy?*

*Or maybe you need to remove that stubborn stump.*

*Do your hedges, Conifers or shrubs need trimming.*

*With 30 years of experience working with trees in your area, I would be pleased to offer you free advise and a free quotation.*

**I also sell high quality firewood logs**

*call me now on*

**01530 251312**

*Constantly Recommended*



- Fully Insured
- Local family business
- Open & tidy service



# PEST CONTROL

**DOMESTIC • COMMERCIAL • INDUSTRIAL**



**Which?**  
Trusted trader



**Guaranteed Service  
No Add On Charges**

**Wasps \* Fleas \* Ants \* Rodents**

**Bird Control \* Fly Killers**

**Fly Screens \* Feminine Hygiene**

**FOR A FAST, RELIABLE RESPONSE**

**CALL FREE ON**

**0116 234 0078**

ensuring a pest free environment

[www.targetpestcontrol.co.uk](http://www.targetpestcontrol.co.uk) | [Info@targetpestcontrol.co.uk](mailto:Info@targetpestcontrol.co.uk)

# Anstey & District

Est. 1992 Independent Funeral Services

0116 234 0548

We can take care of every detail, advise and help you on each and every step of the way.

- Qualified Funeral Directors
- Floral Tributes arranged
- Hearse, Limousines and alternatives available
- Monumental Service
- Car parking available
- Online tribute and donation profile
- Catering suite
- Chapels of rest
- Funeral plans available
- 24 hour service



Funeral arrangements can be made in the comfort of your own home if preferred.



Golden Charter  
Funeral Planning for Life Ltd.

Talbot House, Leicester Road, Anstey, Leicester, Leicestershire LE7 7AT  
Email: [talbotthouse@ansteyfunerals.com](mailto:talbotthouse@ansteyfunerals.com) Website: [www.ansteyfunerals.com](http://www.ansteyfunerals.com)