

# Newtown Linford Magazine

**ISSUE NUMBER 198**

## **CONTENTS**

<b>Church News</b>	<b>3, 20/21</b>
<b>Macmillan Coffee Morning</b>	<b>5</b>
<b>Coffee &amp; Cake</b>	<b>6/7</b>
<b>Newtown Linford Choral Society</b>	<b>8</b>
<b>Primary School</b>	<b>10</b>
<b>Friends of Charnwood Forest</b>	<b>12</b>
<b>Boules</b>	<b>15</b>
<b>Village Archive</b>	<b>16</b>
<b>Gardening Club</b>	<b>17</b>
<b>Magazine 200th Edition</b>	<b>17</b>
<b>Newtown Books for Sale</b>	<b>19</b>
<b>Jolly Tots Playgroup</b>	<b>22</b>
<b>Newtown School Governor</b>	<b>23</b>
<b>David Snartt News</b>	<b>25</b>
<b>New Defibrillator News</b>	<b>26</b>
<b>Defibrillator activation info</b>	<b>27/29</b>
<b>Brownie News</b>	<b>30</b>
<b>Neighbourhood Watch</b>	<b>33</b>
<b>Parish Council</b>	<b>36</b>



**October 2022**

# Paint Wizard

## Mobile Vehicle Body Repairs

All work completed at your home  
at your convenience  
or if you have no off road parking  
we offer a free collection and delivery service

Free Collection & Delivery Service Available

Call for a No Obligation Quote

**07850 456696**

**Proprietor Paul Beaver, Grey Crescent, Newtown Linford**



Panel Resprays  
Scratch Removal  
Stone Chip Repair  
Windscreen Repair  
Colour Restoration  
Alloy Wheel Refurbishing  
Machine Polishing & Glaze  
Colour Code Bumper Resprays  
Colour Code Wing Mirror Resprays

Consult

## WALTER MILES

(Electrical Engineers) LTD

Est. 1928

For All Your Electrical Requirements

**LIGHTING, HEATING, POWER, REPAIRS, RENEWALS  
AND MAINTENANCE**

Member of the Electrical Contractors' Association and N.I.C.E.I.C

**Office and Works** Marshall House, West Street, Glenfield, LEICESTER, LE3 8DT  
Telephone 0116 287 2400 Fax 0116 287 2552  
E-Mail [office@waltermiles.com](mailto:office@waltermiles.com)

## Horseshoe Cottage Farm

Luxury bed and breakfast accommodation



**Award Winning B & B.**

Winner of Leicestershire's B&B/  
Guest Accommodation 2018 and  
Leicestershire's Best Breakfast  
2018

Previous winners of Outstanding  
Customer Service & Sustainable  
Tourism in the East Midlands

**Roecliffe Road, Hallgates, Cropston, Leicestershire LE7 7HQ**

**Tel: + 44(0)116 2350038**

**Email: [lindajee@horseshoecottagefarm.com](mailto:lindajee@horseshoecottagefarm.com) Website [www.horseshoecottagefarm.com](http://www.horseshoecottagefarm.com)**

# The Bradgate

Group Parish



**S**ince the sad news on Thursday 8<sup>th</sup> September of the death of Queen Elizabeth II we have been reminded again of the great gift of her dedicated service to the nation and to the Commonwealth. How she will live in the memories of the many people she encountered.

I never met Queen Elizabeth, and the nearest I ever got to her I nearly got shot.

Some years ago I was staying overnight in a little complex around the back of St George's Chapel in Windsor, just the other side of the wall from where the Queen now lies in a side chapel. After the final evening session in the conference, I continued a conversation with a fellow-participant as he walked to his car parked up the hill. As he drove off I realised I'd spent the whole day there without seeing anything of the castle so I thought I'd take a peek through the archway just beyond me. As I walked into it a man dressed all in black with at least three visible guns on him stepped out of the shadows and told me – none too politely – to return to my accommodation. I realised as I walked back that Ascot was on, and the Queen was staying in the apartments just the other side of the arch.

It was a good reminder of the constant vigilance which surrounded the Queen and now our new King. Not just around her in those who protected her, but no doubt within her as well as she constantly considered how to act, or not act, and agonised over difficult decisions and the right judgement. A life lived with such grace under such pressure is not easy.

Just a couple of months ago I finished my letter with these same words from Her Late Majesty on the occasion of her Golden Jubilee. They are still worth learning from.

I know just how much I rely on my own faith to guide me through the good times and the bad. Each day is a new beginning, I know that the only way to live my life is to try to do what is right, to take the long view, to give of my best in all that the day brings, and to put my trust in God.

Like others of you who draw inspiration from your own faith, I draw strength from the message of hope in the Christian gospel.

**Richard Trethewey, Rector of All Saints' Newtown Linford**



## VILLAGE DIARY

### October

- 1st MacMillan Coffee Morning
- 2nd Cake sale
- 4th Biodiversity Open Evening Village Hall
- 22nd Biodiversity Walk
- 25th Gardening Society "Dancing with Borders"
- 26th Friends of Charnwood Forest
- 26th Parish Council Meeting

### Regular events

#### **Mondays**

- 9.30 Slimming & Fitness, The Linford
- 1.30 Dance Fitness for 50+ Linford
- 5.30 Brownies at "The Linford"
- Bell Ringing 8pm at the Church

**4th Tuesday** of the month  
Gardening Club

**4th Wednesday** of the month  
Gentleman's Club Bradgate PH

#### **Wednesdays**

- 10.30 and 6.30 Bodyblast Classes The Linford
- Quiz nights at The Linford 8pm start

#### **Thursdays**

- 11.15 Coffee Mornings Village Hall
- 6.15 Slimming & Fitness, The Linford

### **How to contact the Police**

All incidents are to be reported to the Police and **by calling 101**

They will then assess the situation and deal with the situation as they see fit. This may involve a vehicle from another area. If you wish, also advise our NHW coordinator who will circulate if appropriate.

**An alternative way is to go online to report an incident**  
<https://www.police.uk/pu/contact-the-police/report-a-crime-incident/>

This may be easier if the phone call is not urgent. 101 calls are not free.



WORLD'S BIGGEST  
**COFFEE  
MORNING**

**MACMILLAN  
CANCER SUPPORT**



  
**THE  
LINFORD**

66 Main Street, Newtown Linford  
Tel: 01530 244012  
thelinford.co.uk

We are pleased to let you know that the MacMillan Coffee Morning will be held again at The Linford on

**Saturday 1st October  
11 - 3pm.**

Last year was a huge achievement and we are hoping, with your support and generosity, it will be an even bigger success!

All cake donations, including vegan cakes, would be gratefully appreciated. Please include a full ingredients list with each cake.

Last year, there was such an amazing response from "Cake Bakers", we have decided in addition to the Coffee Morning, we will hold a

**Cake Sale  
on Sunday 2nd October  
11 - 1pm**

to help raise even more valuable funds for this worthwhile cause.

Please come with your family and friends. Join in the fun, laughter and tasty treats to help contribute towards the MacMillan Cancer Support this year.

Thankyou

Ann Jackson 07789 454247

Victoria O'Callaghan (The Linford) 07557 417321

## COFFEE & CAKE ROTA September/October 2022

### OCTOBER

- 6<sup>th</sup> Sue Morran, Sarah Brown, Teresa Calvert 07810 116641:  
07811 166161: 07469 719018
- 13<sup>th</sup> Margaret Bloor, Sue Clarke, Sue Birkett 07713 457414: 242000  
244317
- 20<sup>th</sup> Judy Rowe, Felicity Manning, Marilyn Upstone 243989: 245298  
242715
- 27<sup>th</sup> Bev Griffiths, Sue Dobby 01509 890264: 245366

### NOVEMBER

- 3<sup>rd</sup> Glennis M, Mary Clarke, John Castle, Carolyn T 242897:  
0116 319011: 249173
- 10<sup>th</sup> Maria Simms, Vicki Kerr and friend 07974 085434: 07904123603
- 17<sup>th</sup> Lesley Cook/Chris A/Ann Scrine 245208: 242432: 481928
- 24<sup>th</sup> Carol Ann, June  
Hallam 243433: 0116  
2304808

Please swap with someone else if you are unable to do your duty. Pass on the hall key to the next people on duty.

An opportunity for everyone to catch up on Village news and activities and to meet your fellow neighbours

Rota Volunteers - If you are struggling with putting the tables and chairs out for your duty Joe Costello 249613 has offered to help if around and will ask someone else to help him as well. **Carol Ann**

### ON THE LAWN SUMMER 2022

Following a suc-





Successful covid summer in 2021 of Coffee & Cake on villagers lawns it was decided to repeat it this summer Thank you to all the hosts. The weather was kind to 3 of the 4 events.



**Newtown Linford Choral Society**



Thank you to everybody who came to our Summer Concert in the Village Hall, which was a very happy and enjoyable event.



We've now started rehearsing for our



**Winter Concert which will be in Emmanuel Church on 28<sup>th</sup> January 2023,**

when the choir will be accompanied by a small orchestra. Our director, Sue Ford, has chosen an interesting selection of music including pieces by Handel, Rheinberger, and Gjeilo.

In the meantime we will be holding our by now traditional

**'Come and Sing Carols and Christmas Songs' evening in the Village Hall on Thursday 15<sup>th</sup> December, starting at 7pm.**

There will be a licensed bar to assist in exercising your vocal chords, a brass quintet will be playing, and the Brownies will also be entertaining us. Entrance will be free of charge, although there will be a voluntary collection to help in meeting the Village Hall's escalating expenses.

If you think that you might be interested in singing with the Choral Society please contact Iris or myself for further details on 01530 243822 - tenors will be particularly welcome! There are no auditions to pass, and learning tracks are provided to help you with the notes.

**Peter Sayer**

# Problems With Your Feet?

Home Visits & Cropston Surgery

- ∞ Ingrowing Toenails
- ∞ Fungal
- ∞ Corns
- ∞ Callous
- ∞ Verrucae



Johanna Partridge MCFHP MAFHP

Foot Health Practitioner

CALL 0116 235 1971

Or 0788 781 7370



Registered Member of the British  
Association of Foot Health Professionals

## SYKES JEWELLERS

WATCH, CLOCK &  
JEWELLERY REPAIRS

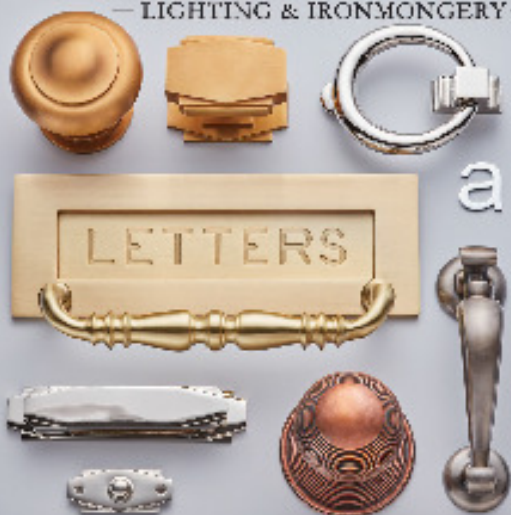
WATCH BATTERIES AND  
STRAPS FITTED WHILE  
YOU WAIT

8 BRADGATE ROAD, ANSTEY  
TEL: 0116 236 2510  
[sykesjewellers.co.uk](http://sykesjewellers.co.uk)



## BROUGHTONS

— LIGHTING & IRONMONGERY —



The Old Cinema Cropston Road Anstey Leicestershire LE7 7BP

0116 232 3175

[www.broughtons.com](http://www.broughtons.com) [sales@broughtons.com](mailto:sales@broughtons.com)



## Newtown Linford Primary School

Email: [office@newtown.bepschools.org](mailto:office@newtown.bepschools.org)  
Tel. 01530 242370



We would like to say a huge welcome to all our new children and families that have joined our school family this year. They have all settled in really well and are enjoying all the activities they have taken part in, in class.

We have already had a lot of exciting things we have taken part in this term. The children designed and built scarecrows for the Scarecrow Festival. We also held our school fete and it was lovely to see you all at school where we had a range of stalls and activities, including a ride on railway! We were also thrilled that we could hold our Harvest Festival at the Church again and the children took part in some wonderful class performances and sang some of our favourite harvest songs.


We are thrilled that we can now offer our children piano lessons in school and we have also managed to hire a set of handbells. We can't wait to perform and show off our musical talent nearer Christmas at 'Coffee and Cake' and also in the Church during our Nativity Services.

Due to our fabulous school extension, we do currently have some places available in Key Stage 2. If you are interested in a school place then please contact the school to arrange a tour to see our school in action and feel the positive atmosphere for yourself.

## Maths, Science and Chemistry tuition

### Developing Confidence through Understanding

**Rebecca Cowling MSc QTS**

 07341177881

**First Tutorial free**



**Rebecca Cowling MSc QTS**



<https://www.linkedin.com/in/rebecca-cowling>



<https://rebecca.cowling.wixsite.com/my-site-1>





## Villager Johnny Richardson lives through 5 Monarchs

Many of our older villagers have had the pleasure of living during the reign of 5 Monarchs. I had the pleasure of visiting Johnny Richardson who was born in the village at Marions Cottage (the Parks small shop on Bradgate Road).

1. Born 3rd July 1935 in the reign of King George V, he was 7 months old when the King died
2. King Edward (Son) succeeded but he abdicated to be with Mrs Simpson
3. King George VI, his brother, and the Queens father, then reigned until he died at 52
4. Daughter Queen Elizabeth II became Queen at the very young age of 25. She died on Thursday 8th September 2022
5. King Charles III, her son, is now King

He has many lovely stories about some of the Royals. Remember there was no social media or TV in his youth, so gossip and the newspaper (if you could afford one), were the only sources of information about them. A strange thought today after watching the Queen's coffin travelling through Scotland with so many phones held aloft to get the footage - no doubt for instagram!

He said "George V wasn't believed to be a kind man which he felt was carried through to Edward, his son, who also wasn't believed to be very kind to his brother George who succeeded him" (teasing him about his stammer)

Johnny was in the army and 6 weeks after joining, aged 17, due to the death of the King, suddenly all the insignia for his uniform was changed when Elizabeth became Queen. He remembers his mother coming into his bedroom to announce with glee that the Queen had given birth to a boy, Charles, as it was so important in those days.

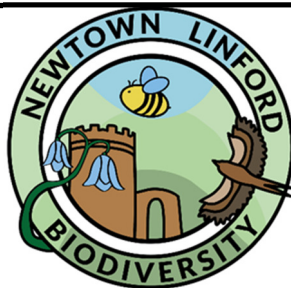
The only photos people saw of the King or Queen would be on a coin or in the paper, or by going to the Anstey Top House Cinema where a short film of the King or Queen would often be played before the main film. Televisions were not available throughout most of the Kings reign, but the Queens Coronation was televised (in black and white), after Prince Phillip was determined for it to happen.

Johnny met King Charles III many times when he was the Prince of Wales. Johnny was a craftsman of handmade chairs and always had stands at the Royal Norfolk Show. King Charles loved crafting of any sort, whether it be in clog making, thatching or rake making amongst

many others. He would always take time to talk to each individual including Johnny, and often stayed longer than planned. Johnny has a photo of Charles sitting in one of his chairs at the Show, but unfortunately he had nipped to the toilet so missed being in the photo. He said you could pay £30 to join the then Prince for lunch in the marquee which he could not afford at the time! Hopefully by the time you read this the photo will be attached to this story. If the photo is not here - wait till the next edition of the magazine!  
**Carol Ann**

## **Newtown Linford Biodiversity**

**Open Evening - Tuesday 4th October 7.30pm**  
**Village Hall FREE**



You are invited to join us for a brief update on our activities followed by a slide presentation on the birds of Bradgate, given by Toby Manning and illustrated by local photographer Jan Croft's excellent photos.

Light refreshments will be available during the evening. There'll also be a plant stall.

**Wildlife Walk Saturday 22<sup>nd</sup> October 2pm**

Meet outside the Village Hall at 2pm for a walk in Cossington Meadows. To help with coordinating transport, please contact the walk leader, Toby Manning, in advance (though this is not essential). His contact details are: tel. 01530 245 298; email: [ptm@tobymanning.co.uk](mailto:ptm@tobymanning.co.uk)



## **THE FRIENDS OF CHARNWOOD FOREST**



---

**Wednesday 26th October**

Malcolm Lawer from Tarmac Ltd will be talking about the proposed extension to their quarry in Mountsorrel and how they plan to deal with the environmental impact that this could have.

Woodhouse Eaves village hall, 7.30pm. All welcome. Members free, visitors £3 - to include a glass of wine.

# KEITH SMITH (ANSTEY) LTD



6 STADON ROAD ANSTEY LE7 7AY - TEL: 0116 2362395 - sales@keithsmithltd.co.uk

## FAST FREE LOCAL DELIVERY



**ZANUSSI**  
**ZWF845B4PW**  
Washing Machine

- ✓ 1400rpm Spin Speed
- ✓ 8kg Load Capacity
- ✓ E Rated
- ✓ 2yr Guarantee
- ✓ 14 Programmes

**EURONICS**  
Sold as an agent of Euronics Ltd.

Now Only **£449.99**



**BOSCH**  
**WAJ28008GB**  
Washing Machine

- ✓ 1400rpm Spin Speed
- ✓ 7kg Load Capacity
- ✓ D Rated
- ✓ Express Wash
- ✓ 15 Programmes

**2 years** **EURONICS**  
Sold as an agent of Euronics Ltd.

Now Only **£399.00**



**Blomberg**  
**LWF174310W**  
Washing Machine

- ✓ 1400rpm Spin Speed
- ✓ 7Kg Load Capacity
- ✓ 28 Min Fast Full Load
- ✓ 16 Programmes
- ✓ D Rated

**3 year** **EURONICS**  
Sold as an agent of Euronics Ltd.

Now Only **£359.99**



**HOTPOINT**  
**NM11946WSAUKN**  
Washing Machine

- ✓ 1400rpm Spin Speed
- ✓ 9kg Load Capacity
- ✓ A Rated
- ✓ Rapid Option
- ✓ White

**EURONICS**  
Sold as an agent of Euronics Ltd.

Now Only **£409.99**



**BEKO**  
**CIFY81X**  
Built-In Single Oven

- ✓ 5 Functions
- ✓ 66 Ltr Oven
- ✓ Fan Assisted
- ✓ Stainless Steel
- ✓ A Rated

**EURONICS**  
Sold as an agent of Euronics Ltd.

Now Only **£239.99**



**Haier**  
**HW90B14959U1UK**  
Washing Machine

- ✓ 1400rpm Spin Speed
- ✓ 9kg Load Capacity
- ✓ A Rated
- ✓ 5yr Guarantee
- ✓ White

**EURONICS**  
Sold as an agent of Euronics Ltd.

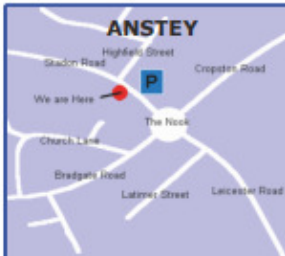
Now Only **£529.99**

### Fitted Kitchens

We are pleased to announce that we are now agents for A.W.E Kitchens and Bedrooms Who specialise in Bespoke made to measure kitchen & bedroom furniture  
Please call in for further details

### FREE DELIVERY with Personal Service

"Ask About our Same Day/Next Day Installation and Removal Service"



# Derry's Nurseries

Est 1976. Well worth a visit....

Main Steet, Cossington LE7 4UU

**Tel (10509) 812815 Open 7 days a week**

Campervan Café open Friday, Saturday & Sunday



Come and see our new wide variety of evergreen shrubs & plants now in stock to give your garden new life for the Autumn.



Check out our Facebook page!

Time to buy your spring flowering bulbs

Loyalty Scheme

Now available

Seasoned Hard-wood Logs, Coal & Kindling  
Supplied in nets , bulk bags or loose loads

Full size trees now in stock



**FREE DELIVERY TO LOCAL AREA**

**Derry's Nurseries NOW ONLINE**

at [www.derrysnurseries.com](http://www.derrysnurseries.com)

Email: [hello@derrysnurseries.com](mailto:hello@derrysnurseries.com)



## Boules

Our last game of the season proved to be one the best. In spite of a record summer for high temperatures and sunny days it seemed to rain on Tuesdays, as a result we only managed three and a half evenings of boules.

September, though, was perfect - a cool fine evening and even floodlights for the last hour. 15 of us enjoyed a few competitive ends, before the finale, in playing for the Cup.

I am pleased to report that Joe Costello, a new player this season,

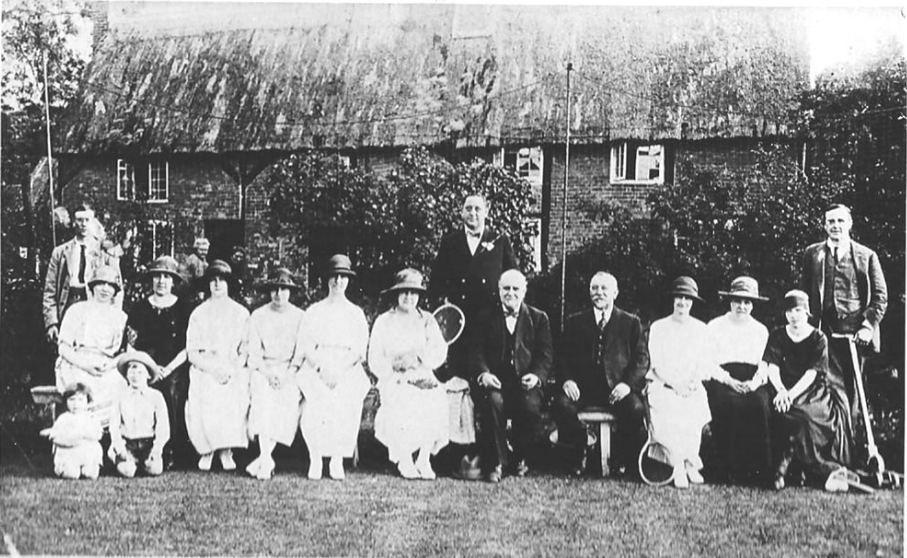
was a worthy winner with the very last throw of the evening. It was pitch perfect right on the jack. Wow! He gets to keep the Cup until next May

Joe was so overcome at the presentation that he even took his hat off! Thank you to all the players and the drivers who get us safely to the Blue Bell at Hoby, and back again.

I am stepping down as the boules coordinator so next season, as they say, will be under new management.

## Dick





### The Tennis Club

The Village Tennis Club is thriving and recently held a very special event in memory of Jenny Whitehead (see last month's edition). There is some very interesting information in the Archive about the Club, including two very old photographs. There are conflicting dates shown concerning its inauguration - 1919 and 1924. Possibly the photographs suggest the earlier date? The first Minute book is said to be dated 1937 with J Piggot as Chairman, and Mr G Sarson as Secretary. Army personnel were admitted during the 2nd World War. By 1978, Geoffrey Pointon was Chairman and it was decided to have a fund raising (not the main purpose) Club day every year with competitions and prizes. This was followed by a fork buffet with tea and cake available all afternoon. A considerable change in fashion is shown in these photographs to those in 1978.





## **Newtown Linford Gardening Club**

A group of our members travelled to Shropshire to visit Wildegoose Nurseries and their spectacular garden. It was the wrong time of the year to see their famed viola houses but the garden was a wonderful sight. They specialised in tall plants, especially grasses and autumn-flowering plants such as rudbeckias, which towered above our heads. The lunch was excellent too with large helpings of gooseberry sponge!!!!

From there we travelled to Windy Ridge, a private garden which opens under the National Gardens Scheme and raises money for charity. It is a splendid garden with over 1000 different plants, laid out in compact areas so there was always something new to see round the corner. We discovered that people living in Shropshire had been blessed with rather more rain than we have, which made us rather envious.

### **James Alexander-Sinclair**

There are still a few tickets available for our celebrity evening on Tuesday October 25<sup>th</sup> in the village hall at 7.30pm. James Alexander-Sinclair is one of the best-known personalities in horticulture and often the right-hand man to presentations with Monty Don at events such as Gardeners' World Live. We feel very privileged to welcome such a high-profile celebrity and are looking forward to his talk called 'Dancing with Borders'. Tickets may be obtained from the secretary on 01530 242452 or on [32couling@gmail.com](mailto:32couling@gmail.com).

**Anne and David Couling**

## **Newtown Linford Magazine's 200th Edition is coming up in December.**

**We would love your ideas for how to make it special.**

**One of the things we have thought about is our front cover which is a copy of a painting done by John Nixon which was presented to Peter Sheridan, Hon Team Vicar, on his retirement. Recently an exhibition was held of John's work. If anyone has a picture of his that you would like to photograph and share, we can put a group of his paintings in the Magazine. Thank you to the two parishioners who have already sent me their photo!**

**If you have a story from the past that you would like to share - let us know for inclusion into the December Magazine**



# Cooks Farm Shop & Country Supplies



**For all your Animal, Pet & Bird Feed**



Did you know that we sell:

- Equestrian Supplies - Pet Food & Supplies
- Timber, Fencing & Gates - Electric Fencing
- Bird Food including Mixes & Straights
- Pigeon Food & Supplies - Fish Food & Baits
- Point of Lay Hens & Poultry Food - Coal & Logs



**Visit our Website: [www.cooksfarmshop.co.uk](http://www.cooksfarmshop.co.uk)**

Markfield Lane, Newtown Linford LE6 OAB

Opening Times: Monday—CLOSED

Tuesday to Saturday 9am—5pm Sunday 10am to 1pm



# Everyone is Welcome at



66 Main Street, Newtown Linford  
Tel: 01530 244012  
[thelinford.co.uk](http://thelinford.co.uk)



*Monday - Thursday 5pm - 11pm*



*Friday 4pm - 11pm*



*Saturday 12pm - 11pm*



*Sunday 12pm - 8pm*



*Friday Happy hour 4pm - 5pm*



*(Draft beer & House Wine)*



*Cobs freshly made everyday*



*Regular entertainment - find*



*us on Facebook for details*



*Quiz night every Wednesday*



*Room hire available*



*Free Wi-Fi*



*Sky Sport & BT Sport*



[thelinford.co.uk](http://thelinford.co.uk)  
01530 244012

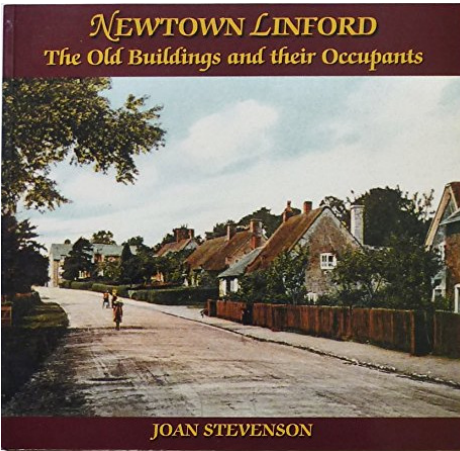
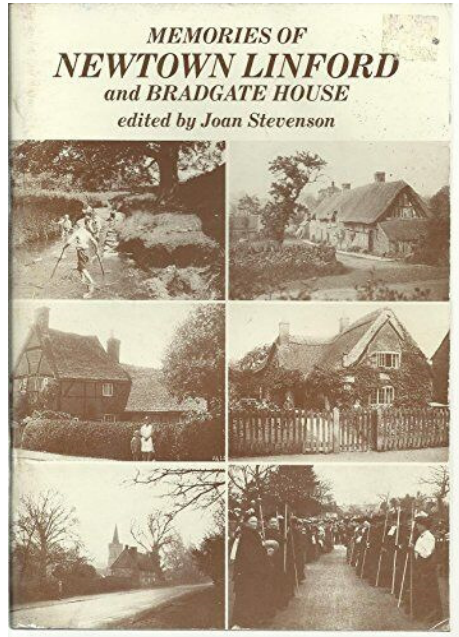
[newtownlinfordclub@gmail.com](mailto:newtownlinfordclub@gmail.com)



## Books about Newtown Linford For Sale

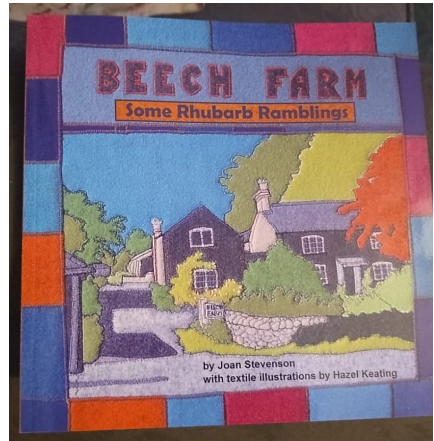
Three lovely books written by Joan Stevenson, former resident of Beech Farm are on sale now.

“Memories of Newtown Linford and Bradgate House” £3.50



“Newtown Linford Old Buildings and their occupants” £7.95

‘Beech Farm: Some Rhubarb Ramblings’ was written during the 1960’s and early 70’s. Joan Stevenson tells the story of her family’s move from a suburban home to a Leicestershire smallholding and a new life for the inexperienced farmers. The manuscript remained buried in a drawer for many decades and is now published for the first time, illustrated with new textile artworks by the author’s daughter Hazel Keating. “148 pages, 10 textile images and 14 archive photographs. £15.



To order please ring Caz Turner 07896 960 676

Part of the proceeds will go to the Village “Jolly Tots” group to help with their funds.

# SUNDAY SERVICES October 2022



DATE	GLENFIELD	NEWTOWN
2 October	8.30am Holy Communion	
<b>Sixteenth Sunday after Trinity</b>	9.30am Breakfast Church	10am Holy Communion <i>John Woolman</i>
9 October	10am Harvest Communion	10am Morning Prayer <i>John Woolman</i>
<b>Seventeenth Sunday after Trinity</b>	6pm Creation Service	
16 October	10am Morning Worship	10am Holy Communion <i>Richard Trethewey</i>
<b>Eighteenth Sunday after Trinity</b>	3pm All Age Worship	
23 October	10am Holy Communion	10am Morning Prayer <i>Richard Trethewey</i>
<b>Bible Sunday</b>		
30 October	10am Morning Worship	10am Holy Communion <i>Richard Trethewey</i>
<b>All Saints'</b>		4.30pm Remembering with thanksgiving <i>Richard Trethewey</i>

## Midweek Holy Communion

Newtown Linford	10.15am, Thursday 6th October
Glenfield	10.30am, Wednesdays 5th and 19th October

## Online Services

<https://www.facebook.com/allsaintsnewtownlinford/live>

<https://www.facebook.com/stpetersglenfield/live>

# CHURCH REGISTERS



## BAPTISMS

None



## WEDDINGS

None

## FUNERALS

None



### **Church Contact Details**

Revd Richard Trethewey  
(Rector) 0116 287 1604  
richard@allsaintsnewtownlinford.org.uk

Hayley Moore (Church Administrator)  
0116 239 3768

office@bradgatechurches.org.uk  
www.allsaintsnewtownlinford.org.uk

**Church Wardens:** Michele Petty, m.petty@ulverscroft.co.uk,  
Jane Woolmer, ejwoolmer@gmail.com.

**Regular Events** - Bell ringer's practice: Monday 8pm

**Website:** [www.allsaintsnewtownlinford.org.uk](http://www.allsaintsnewtownlinford.org.uk)



# Jolly Tots Playgroup

Jolly Tots will be starting on

**Friday 9th September 2022**



At  
All Saints Church  
Newtown Linford



**9:30am - 11am**

We are a friendly parent, grandparent, carer of babies and children up to reception age (4years).

We have lots of fun with toys, crafts, stories and Singalong.

There will be hot drinks for Adults  
and Cold drinks and snacks for Children.

All Welcome.

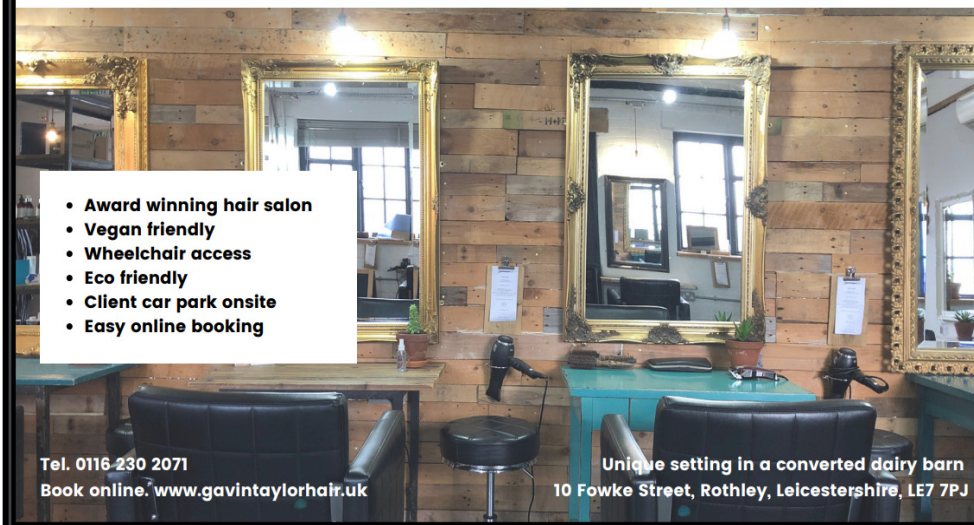
For more information or if you would like to help in  
anyway—please contact

Ann 07925 919 618

Carolyn 07896 960 676







- Award winning hair salon
- Vegan friendly
- Wheelchair access
- Eco friendly
- Client car park onsite
- Easy online booking

Tel. 0116 230 2071

Book online. [www.gavintaylorhair.uk](http://www.gavintaylorhair.uk)

Unique setting in a converted dairy barn

10 Fowke Street, Rothley, Leicestershire, LE7 7PJ

## Can you help to make a difference? Co-opted governor required for Newtown Linford Primary School's Local Advisory Board

Do you have good business or finance skills?  
Knowledge of HR, health and safety, IT development or managing premises?

An interest in curriculum?

Would you like to make a difference to your school community?



If so, you could be just the right person to join the Local Advisory Board for Newtown Linford Primary School, filling our vacancy for a co-opted governor. Our Local Advisory Board members work together to ensure that every child at our school is happy and safe and to offer them every opportunity to learn and to succeed during their time with us. You don't have to be an expert in education or have any previous experience and we welcome members from all walks of life to bring different perspectives and views. This is a rewarding and effective way of making a voluntary contribution to the lives of local young people. Please contact the School Office in the first instance if you think you could help - [office@newtown.bepschools.org](mailto:office@newtown.bepschools.org) / 01530 242370.

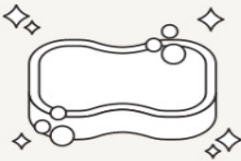


# Sparkles Cleaning

C O M P A N Y

07845772150

Call or text for a free quote



@sparklescleaningcompany



@sparklescleaningco

Loughborough and surrounding  
areas

## **Information from David Snartt.**

### **Her Majesty Queen Elizabeth.**

The Mayor of Charnwood, Councillors and Officers of Charnwood Borough Council are deeply saddened by the death of Her Majesty The Queen. The Mayor of Charnwood, Councillor Jenny Tillotson said: "This is a very sad day for our nation and on behalf of the Borough of Charnwood, I would like to express our sincerest condolences to the Royal family.

Queen Elizabeth selflessly served our country for so many years and earned the respect of not just this nation, but of those around the world, we should remember her with pride and affection."

### **Proclamation of King Charles III.**

I attended the reading of the Proclamation of King Charles III at the Carillon Tower, Queens Park, Loughborough on Sunday 11<sup>th</sup> September. This historic moment was witnessed by hundreds of people who attended the service.

The Mayor of Charnwood, Councillor Jennifer Tillotson, read the Proclamation before the crowd were invited to say God Save the King, sing the national anthem and give three cheers for the King.

Later that afternoon I attended the Proclamation service, which took the same format, in front of All Saints' Church, Newtown Linford. Again, local residents and visitors to the Village attended the service witnessed the Proclamation reading, delivered by the Vice Chairman of the Newtown Linford Parish Council, Tim Porte. The nation was in mourning for Queen Elizabeth, but this was a special moment to recognise the ascension of King Charles III.

May I take this opportunity to thank the Parish Council for delivering this historic and significant occasion for the Parish. Special thanks to the Clerk, Hannah Shaw, for the professional way this event was delivered.

### **Financial Help.**

Last month I alluded to Government announcements about help with the rise in the cost of living and energy bills.

Further Government announcements have now been made regarding help with the rising cost of energy. I understand a typical household will pay no more than £2,500 a year for two years. The Ofgem price cap will be replaced with a two year energy price guarantee.

I am concerned about the rising costs for local businesses. I also understand a scheme for businesses will be given support but lasting for six months. We are very lucky to have a good selection of businesses within

the Parish and nearby villages, offering a wide range of retail goods and excellent food and drinks. Please support your local businesses during this difficult time.

### **Installation of a New Defibrillator.**

Through the Members Grant Scheme at Charnwood Borough Council, I was delighted to help, in some small way, in providing some of the finance to install a new defibrillator at the Newtown Linford Cricket Club ground. This will be an excellent addition to the already installed defibrillators within the Parish. It will provide additional support to both the

Cricket and Tennis Clubs.

The Member grant Scheme at Charnwood Borough Council enables Councillors to provide small grants to a wide variety of community and



voluntary organisations within the Borough. Each Borough Councillor is allocated an annual budget of £500 which can be used to support projects that bring benefits to the Councillor's Ward.

In the past I have been able to help the Newtown Linford Tennis Club and the village Brownies along with other awards in the Woodhouse Parish. For more information about the Members Grant Scheme and other grants available at the Council, please go to the Charnwood Borough Council's website.

Defibrillator  
activation  
process



## Defibrillator Activation Process



The Community Heartbeat Trust

Supporting defibrillation into communities through a governance led,  
sustainable and resilient manner

[How and when are defibrillators activated?](#)

The increase in the number of community defibrillators has led to an expectation that they will be activated to a 999 call in every case. This is not true. Community defibrillators will only be activated as long as certain conditions are present and 999 ambulance operators are instructed to ask relevant questions to ascertain if a defibrillator is needed. In addition the presence of 'Activation radii' or a 'lone rescuer', will determine if a defibrillator is needed or can be accessed. Add to this the increasing numbers of reports of the emergency operator not knowing the location of code, suggests that the public are not being made aware of the right processes or constraints associated with their community defibrillator.

- A 999 call must always be undertaken whilst at the patient. The reason for this is the 999 operator will pick up automatically the location of the call. Thus, they already know the address or very likely the location. Do not go to the cabinet, and then call 999. Always ask for **Ambulance**.
- Once the 999 call is received by the ambulance operators, they are tasked with asking 2 questions - is the patient breathing? Is the patient conscious? They use AI now to determine the type and severity of emergency and automatically dispatch an ambulance to the address/location without the need for further questions at this stage. The 'on screen script' will not allow a process outside of the defined script. They will then ask you if a defibrillator is nearby. Note some 999 operators may say the defib is not visible to them. This is because it is flagged as 'out of use' or 'not available' at this point in time. **This does not mean it is not registered.**
- They will then tell the caller how to undertake CPR and **if it is determined a defibrillator is required**, where the nearest **active** one is and how to get access (which may not be the one you are aware of). This shortens response times and also stops unnecessary use of defibrillators.
- What they cannot do, without some searching, is to take a **second 999** call from the defibrillator cabinet location and allocate it to an **existing 999** call from a different (original) location. Thus delays occur

where a second 999 operator is trying to find the first 999 call. 111 calls do not have access to the defibrillator information. **If a person is unconscious call 999 not 111**

- Sometimes the 999 call does not go to the local ambulance station in very busy periods, but goes to the next available call handler from an adjacent area (or even the police) and they will not have knowledge of where the location of the defibrillator is or the code to get access if locked.
- If you are on your own with the patient, you will not be sent to fetch the defibrillator, but stay doing CPR until help arrives.

**Call 999 - ask for Ambulance**

BT Operator does not know location of defibrillators

**Answer any questions they ask you**

Is patient breathing? Is patient conscious?

**Start CPR**

Compressions only

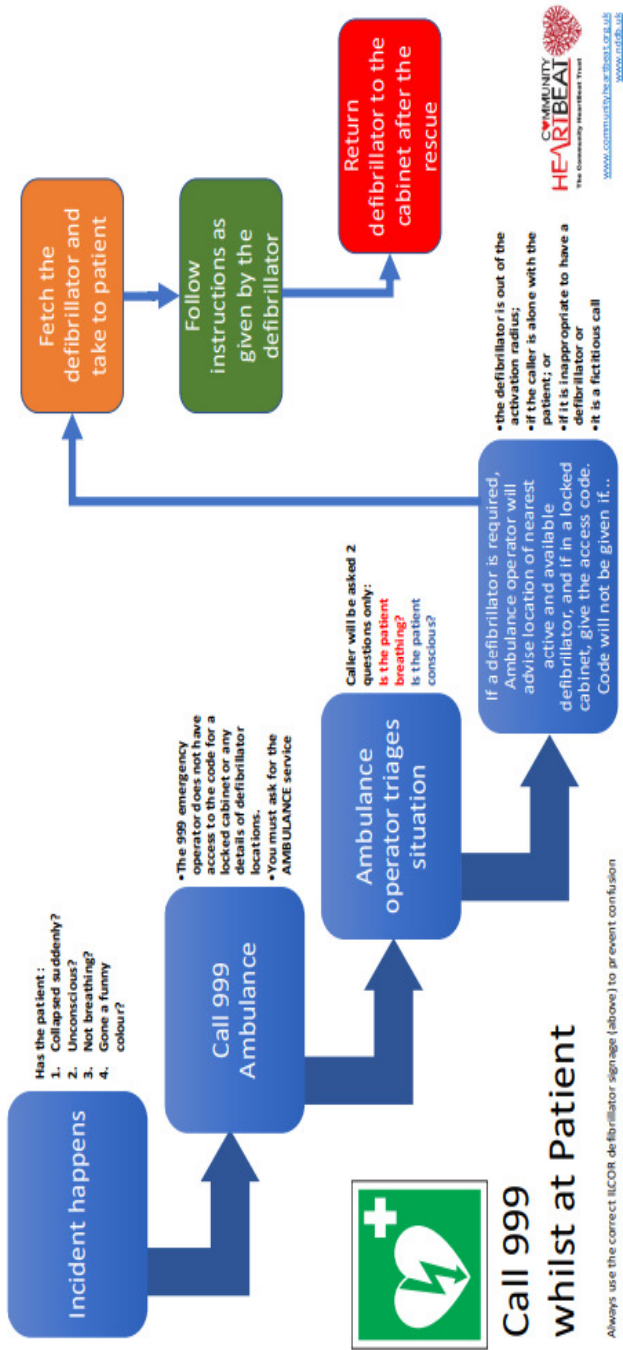
**Fetch defibrillator if asked to do so**

Locked cabinet code will be given by ambulance control

**Return defibrillator to cabinet after rescue**

Data needs to be downloaded and defibrillator recommissioned





## Brownies

On Saturday the 10th of September Brownies went on their annual Twin-Lakes trip. We met outside the Village Hall ready for a day of fun. After a worrying shower just as we arrived, the weather was then lovely. We went straight on to the carousel horses but they went round a track instead of a circle, and the horses did not



have seatbelts which made it a bit scary. After a fun morning full of rides we headed to the soft play area for lunch. Whilst we were there we played on the soft play, a mirror maze and a few smaller rides in the building. After lunch it was on to more rides including a caterpillar ride, which all the brownies went on at the same time! Last but not least we went to the farm area to look at the animals. Thank you Brown Owl and Snowy Owl for a long, tiring but super fun day out!

On Monday the 12th of September we held a two minute silence in memory of our Patron, Queen Elizabeth II. We have also all signed our



names to be added to the Girlguiding book of condolences for the Queen.

## Lottie Harrison

**Roy Green**  
 LETTINGS & ESTATE AGENTS

MEMBERS OF THE  
 RICS  
 REGULATED AND  
 AUTHORIZED

First Floor, 15 The Mark, Avenue, Letchworth, Herts, SG8 1JZ

Contact us on [office@roygreen.co.uk](mailto:office@roygreen.co.uk) or call (0116) 235 3009

### Our Services

**Fully Managed – 8% plus VAT**

**Let only - £525.00 plus VAT**

**Tenancy set up fee - £250.00 plus VAT  
 (only payable on New or Change of tenancies)**

**Members of the Royal Institute  
 of Chartered Surveyors**

**Up to date integrated property management  
 software**

### **NO EXTRA CHARGES FOR**

- Tenancy referencing
- Inventory of property
- Floor plan for advertisement

**We have 65 years experience in property management.**



**Roy Green Lettings & Estate Agents**



**roygreenlettings**



**Roy Green Lettings**





# Roecliffe Tree Surgery.

Get in touch today for a free quotation, we cover all aspects of tree surgery:

- Crown Thinning
- Stump Grinding
- Hedge Cutting
- Reductions
- Pollarding



Phone: 07921381902 | 0116 292 9749

Email: [roecliffetrees@outlook.com](mailto:roecliffetrees@outlook.com)

Facebook: @Roecliffetrees





This month's update comes from our colleagues at Action Fraud:

**ALERT: Energy rebate scam emails**

Action Fraud is warning the public about a sharp rise in reports relating to fake emails purporting to be from Ofgem, the independent energy regulator for Great Britain. The emails claim that the recipient is due a rebate payment as part of a government scheme and provides links for the recipient to follow in order to apply for the rebate. The links in the emails lead to malicious websites designed to steal personal and financial information.

Between Monday 22<sup>nd</sup> August 2022 and Monday 5<sup>th</sup> September 2022, a total of 1,567 phishing emails related to this scam have been reported via the Suspicious Email Reporting Service (SERS). All the emails display the email subject header "Claim your bill rebate now". Offenders are using the Ofgem brand logo and colours to make the emails look as authentic as possible. However, the emails ask recipients to "apply for



**Hard Floor Restoration**

**All Tiled Surfaces Repaired  
Cleaned, Polished  
& Sealed**

Qualified Tiler  
Established 2004

**Free Demonstration & Quotation  
Call Andrew**

**07838 155153**

65 Station Road Glenfield

**Facebook Page [ajbceramics](https://www.facebook.com/ajbceramics)  
[www.ajbceramics.co.uk](http://www.ajbceramics.co.uk)**

**E.W. Goddard  
& Sons**

(Established 1970)

**QUALIFIED PLUMBERS**

**Bathroom and Tiling  
Specialists**

**All Building Work  
and Renovation**

\*\*\*\*\*

305 Markfield Lane  
Markfield LE67 9PR

**Telephone**

**01530 245316 or 0116 2311672  
07961 319908 or 07961 319907**

an energy bill rebate before September 2020”, which is what prompted many recipients to realize the emails weren’t genuine.

You can view examples of the fake emails in our social media posts on Twitter, Facebook and Instagram.

How you can protect yourself and others

If you have any doubts about a message, contact the organisation directly. Don’t use the numbers or address in the message – use the details from their official website. Remember, your bank (or any other official source) will never ask you to supply personal information via email.

If you have received an email which you’re not quite sure about, forward it to [report@phishing.gov.uk](mailto:report@phishing.gov.uk). Send us emails that feel suspicious, even if you're not certain they're a scam - we can check.

For advice on how to stay secure online, please visit:  
[www.cyberaware.gov.uk](http://www.cyberaware.gov.uk)

In other news, the Charnwood West Police Beat Team and the wider team at Loughborough Police Station are working together to investigate crime and patrol 'hotspot' areas across the NL56 beat. Unfortunately, vehicles (in particular vans, mopeds/motorbikes) and businesses containing tools have been targeted in recent weeks.

We are advising the following:

Lock, chain and cover your mopeds/motorbikes to prevent thieves targeting your vehicle. Use a disc lock to help secure the front brake disc, or a grip lock to secure the brake and throttle controls. Use a chain lock through the back wheel and secure the bike to an immovable object. Cover your moped/motorbike as thieves often "shop" for particular bike models.

Consider fitting a Thatcham-rated 1 or 2 alarm system with tracking, immobilisation, anti-grab and movement sensors which can help protect and trace your vehicle.

Consider a battery-operated shed/garage alarm. They respond to movement or door contact with an extremely loud siren.

Wishing you all a safe and crime free month ahead.

Keep ‘em peeled.

**Best wishes,**  
**Hannah Shaw,**  
**Parish Council Clerk,**  
**Tel: 01530 249945**







THE  
**BRADGATE**  
NEWTOWN LINFORD

# Book Your Social Event

**Loft for private and corporate functions**

**Birthday Party Celebrations**

**14—32 Guests**

**Festive bookings now being taken**



**New Winter menu coming soon.**

**Open from 12 noon Daily**

**Tel: 01530 242239**

**Email: [contact@thebradgate.com](mailto:contact@thebradgate.com)**

**[Www.thebradgate.com](http://www.thebradgate.com)**

## News from Newtown Linford Parish Council

Have you looked at the website recently?  
[www.newtownlinford.org.uk](http://www.newtownlinford.org.uk)



Dear Residents,

Following the sad news of the death of Her late Majesty Queen Elizabeth II, a Book of Condolence was opened at All Saints' Church during a 10 day Period of National Mourning, for residents and members of the public to leave a message of condolence and light a candle. Floral tributes were also laid in the Churchyard. The Book of Condolence will be archived along with others from Charnwood parishes, coordinated by the Lord Lieutenants Office.



On Sunday 11<sup>th</sup> September, a local reading of the Proclamation of the new Sovereign was held in Newtown Linford.

As the Chairman, Cllr. Sue Pritchard, was away at the time, the Proclamation of King Charles III becoming the new monarch was read by Parish Council Vice-Chairman, Cllr. Tim Porte, at All Saints' Churchyard. Thank you to everyone who attended and to members of the Choir who led the singing of our National Anthem.

If anyone present took photographs of this historic moment, could you please email them to me at [clerk@newtownlinford.org.uk](mailto:clerk@newtownlinford.org.uk) for the Village Archives. Thank you.

### **Bob Bown Memorial Field**

As previously reported, plans are currently being drawn up for various new pieces of play equipment and improved surfacing to replace the existing wetpour at the Bob Bown Memorial Field. It is thought improvement works will be scheduled over a three year plan. The total cost for new equipment and resurfacing is in the region of £35,000, so it is un-

likely NLPC will be able to fund the designs at once, unless we can secure external funding, as we have done previously. A staggered approach to the improvement works could mean gaps in play facilities in the short term, as old equipment is removed before the new surfacing is laid and whilst we await the new equipment.

### **Cemetery and Churchyard**

NLPC has submitted an application to both Charnwood Borough Council and the Church of England for removal of a multi-stemmed self-set yew bush in All Saints' Churchyard. Edging stones surrounding graves are at risk if the yew continues to grow. Should permission be granted, the area would be opened up to allow space for a new seating area. NLPC will then replant a new Yew tree at the Groby Lane Cemetery and is considering planting this in memory of Her late Majesty Queen Elizabeth II.

### **Village Litter Bins and Troughs**

NLPC are looking for a contractor to quote for the repainting of the village litter bins and plant troughs.

If you are interested or know of someone who might be interested in giving us a price for this work, please email me at the usual address. Thank you.

Stay well, stay safe.  
Best wishes,

**Hannah Shaw**  
**Parish Council Clerk**  
**Tel: 01530 249945**  
**Email: [clerk@newtownlinford.org.uk](mailto:clerk@newtownlinford.org.uk)**

## **Stay Fit & Active**

### **Dance Fitness for 50+**

The Linford , Main Street

Mon 1:30 — 2:30pm



### **Are you aged 50+?**

**Come and join us and improve your fitness level**

**All levels of fitness are catered for with fun filled sessions to music.**

**Do you want to keep active as long as you can?**

**Has your get up and go, got up and gone?**

**Contact Mo Watson**

**Tel: 07751 504669**

**Email: [mwkfa@btinternet.com](mailto:mwkfa@btinternet.com)**

### **Dates of the next Parish Council Meetings**

Wednesday 26th October at 7.15pm

Wednesday 30th November at 7.15pm

## Booking of

## Village Hall

To book the Village Hall

Hannah Shaw  
Parish Council Clerk  
Tel: 01530 249945

or email

newtownlinfordvillagehallbook-  
ing@yahoo.com

**MARTIN ALLEN**

**FLOORING &  
FRENCH  
POLISHING**

**YOUR LOCAL  
FLOORING SPECIALIST.**

**All timber floors laid**

**All existing timber floors sanded  
and refinished**

**Any colour or finish**

**Free quotations - Call Martin.**

**0116 2165107**

**martin@martinallen.co.uk**

### Contributions to Village Magazine

Can we have your contributions for the **November 2022** issue by  
**15<sup>th</sup> October 2022** please.

**Send to the Editor, Carole Heubeck,  
5 Grey Crescent, Newtown Linford (01530 244790).**

**E-mail      newtownvillagemagazine@outlook.com &  
heubecks@gmail.com**

**Please could you send any emails to the above email addresses. If  
you do not receive an acknowledgement of your email within 3/4  
days - please contact Carole, the Editor direct on the above number  
to check we have received it.**

The opinions expressed by the contributors are not necessarily those of  
the Editors and they reserve the right to amend, shorten or not print any  
article or advertisement submitted for publication. Whilst every effort has  
been made to ensure the accuracy of the information printed in this mag-  
azine, and advertisements are accepted in good faith, no liability can be  
accepted for loss, damage or claim of any kind incurred by the reader

**Printed by Barkers Printers Leicester 0116 2120983**

# COVERING *Martin Page*

YOUR LOCAL

The Newtown Linford Area

**Tree**



**Surgeon**

**charnwood**

*Have you considered your trees may need some maintenance from time to time. Are your trees maybe too tall blocking light, unsafe or untidy?*

*Or maybe you need to remove that stubborn stump.*

*Do your hedges, Conifers or shrubs need trimming.*

*With 30 years of experience working with trees in your area, I would be pleased to offer you free advise and a free quotation.*

**I also sell high quality firewood logs**



*call me now on*

**01530 251312**

Constantly Recommended



- Fully Insured
- Local family business
- Clear & tidy service



# PEST CONTROL

DOMESTIC • COMMERCIAL • INDUSTRIAL



**Which?**  
Trusted trader



**Guaranteed Service  
No Add On Charges**

Wasps \* Fleas \* Ants \* Rodents

Bird Control \* Fly Killers

Fly Screens \* Feminine Hygiene

FOR A FAST, RELIABLE RESPONSE

**CALL FREE ON**

**0116 234 0078**

ensuring a pest free environment

[www.targetpestcontrol.co.uk](http://www.targetpestcontrol.co.uk) | [Info@targetpestcontrol.co.uk](mailto:Info@targetpestcontrol.co.uk)

© 2008 Target



# Anstey & District

Est. 1992 Independent Funeral Services

0116 234 0548

We can take care of every detail, advise and help you on each and every step of the way.

- Qualified Funeral Directors
- Floral Tributes arranged
- Hearse, Limousines and alternatives available
- Monumental Service
- Car parking available
- Online tribute and donation profile
- Catering suite
- Chapels of rest
- Funeral plans available
- 24 hour service



Funeral arrangements can be made in the comfort of your own home if preferred.



Golden Charter  
Funeral Planning for Life Ltd.

Talbot House, Leicester Road, Anstey, Leicester, Leicestershire LE7 7AT  
Email: [talbotthouse@ansteyfunerals.com](mailto:talbotthouse@ansteyfunerals.com) Website: [www.ansteyfunerals.com](http://www.ansteyfunerals.com)