

# Newtown Linford Magazine

**ISSUE NUMBER** 217

## **CONTENTS**

<b>Church News</b>	<b>3, 20/21</b>
<b>Village Diary</b>	<b>4</b>
<b>Coffee &amp; Cake</b>	<b>5</b>
<b>Gardening Club</b>	<b>6</b>
<b>Coffee and Cake on the lawn</b>	<b>9</b>
<b>Biodiversity News</b>	<b>10</b>
<b>Tennis Club</b>	<b>12</b>
<b>Music Quiz</b>	<b>16</b>
<b>Scarecrow Festival</b>	<b>18</b>
<b>MacMillan Fashion Show</b>	<b>23</b>
<b>Michael's Maundy Money</b>	<b>24</b>
<b>Degree Celebration</b>	<b>25</b>
<b>Cricket Club</b>	<b>22</b>
<b>Markfield History Group</b>	<b>26</b>
<b>Village Archives</b>	<b>28</b>
<b>Brownies</b>	<b>29</b>
<b>David Snartt News</b>	<b>31</b>
<b>Neighbourhood Watch</b>	<b>33</b>
<b>Parish Council</b>	<b>34</b>
<b>Head for Change Charity</b>	<b>38</b>



**September 2024**

# Paint Wizard



## Mobile Vehicle Body Repairs

All work completed at your home  
at your convenience

Call for a No Obligation Quote

**07850 456696**

Or email:

[paintwizardthomas@gmail.com](mailto:paintwizardthomas@gmail.com)

**Thomas Leason**

Panel Resprays  
Scratch Removal  
Stone Chip Repair  
Colour Restoration  
Alloy Wheel Refurbishing  
Machine Polishing & Glaze  
Colour Code Bumper Resprays  
Colour Code Wing Mirror Resprays

Consult

## **WALTER MILES**

**(Electrical Engineers) LTD**

Est. 1928

For All Your Electrical Requirements

**LIGHTING, HEATING, POWER, REPAIRS, RENEWALS  
AND MAINTENANCE**

Member of the Electrical Contractors' Association and N.I.C.E.I.C

---

**Office and Works** Marshall House, West Street, Glenfield, LEICESTER, LE3 8DT  
Telephone 0116 287 2400 Fax 0116 287 2552  
E-Mail [office@waltermiles.com](mailto:office@waltermiles.com)

### **The Village Magazine is exploring different ways of presenting the Village Magazine.**

You will see a new look on some pages in this Magazine - such as the page opposite. We are exploring different fonts and formats to "refresh" the Magazine. On some pages we have trialled page designs with two print columns instead one.

We are also considering using different front cover designs containing photographs or artwork provided by our readers but will retain at least one issue each year containing John Nixon's painting which has been on the cover since the start of the "New Look" magazine 26 years ago!

We would welcome feedback and comments about these suggested changes. Email the Editor with your thoughts and ideas.

[newtownvillagemagazine@outlook.com](mailto:newtownvillagemagazine@outlook.com)

# The Bradgate

Group Parish



Richard Trethewey

Rector of St Peter's, Glenfield and All Saints', Newtown Linford

0116 287 1604

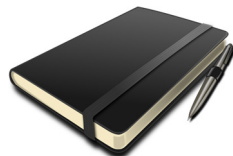
During August we have seen some terrible scenes in this country which were triggered by an awful, tragic event: the murder of three girls at a Taylor Swift-themed holiday club event. All hearts go out to their families and share their grief. And as all those who have experienced grief know, one aspect of that is often anger. We saw that anger ignite a simmering resentment into full fury, targeted at immigrants and refugees in riots.

The issues are complex and I do not pretend to have solutions to deep-seated social ills. But part of the problem is that everyone feels hard done by. That they are the victim and therefore others should change so that their situation is improved, rather than the other way round. The difficulty with that is that there are genuine grievance on many sides. There is undoubtedly a racism which is still alive and prevalent within this country which leads to those of non-white ethnicities facing undeserved ill-treatment. When they are in this country because they have fled persecution and violence in their own countries this is particularly cruel; but it is also true that those living in predominantly white working class communities have suffered from marginalisation over the past couple of generations. White working class boys, for instance, were only half as likely as those from other backgrounds to achieve 5 GCSEs at grades A\*-C in figures published five years ago.

Neither of these are good things. Both need to be addressed. If there is a perception that people are being treated unfairly, that causes the resentment and frustration that we've seen explode.

As I have said, I do not pretend to have solutions nor wish to promote any simplistic way forward. But I can point out there is a different way to the rioting, hatred, anger and violence we have witnessed. A way which is seen in the actions and reactions of Jesus of Nazareth, member of the Jewish race, blameless victim who did not demand his rights but advocated such counter-intuitive actions as turning the other cheek. Jesus did not reject those different from him but opened up the way to God to them all through his unjust death, which achieved a cosmic justice. I don't have the answers but I know they lie in discovering his wisdom.

# VILLAGE DIARY



## **September**

3rd Fashion Show  
3rd Parish Council Meeting@19:15  
8th Tennis Tournament Finals Day  
28th/29th Scarecrow Festival  
29th Harvest Festival

## **October**

4th Music Quiz  
5th Wildlife walk  
9th Parish Council Meeting@19:15  
29th Open Evening Biodiversity Group

## **Mondays**

9.30 Slimming & Fitness, The Linford  
1.30 Dance Fitness for 50+ Linford  
5.30 Brownies at "The Linford"  
6:30 Hatha Flow Yoga at The Village Hall  
8pm Bell Ringing at the Church

## **4th Tuesday** of the month

Gardening Club

## **4th Wednesday** of the month

Gentleman's Club Lingdale  
Golf Club

## **Wednesdays**

10am Art Club in Church  
6.30 Bodyblast Classes Village Hall  
8 Quiz night at The Linford

## **Thursdays**

11.15 Coffee Mornings Village Hall  
6.15 Exercise class, The Linford  
7.30 Choral Society (no rehearsal on 19/9/24). Village Hall

## **Fridays**

9:30 Jolly Tots, Church

## **Saturday**

2nd Saturday of each month - Village Ramblers

## **HELPING HAND**



**Do you require a little help with small household or garden chores?**

**Would like a companion to assist with shopping?**

**I am a very efficient and reliable lady that can help.**

Personal references available.

**Jane Smith**

07813 348399

01530 242325

[janee29@outlook.com](mailto:janee29@outlook.com)

## Coffee & Cake Rota September -October 2024

### September

5<sup>th</sup> Sue Harris, Judith Harris, Hillary Sue 07582 293 510; 242512; 07432 302 983

**Tables - Phillip Mason, Paul Day**

12<sup>th</sup> Maria Simms, Vicki Kerr, Lauren Ahyow; 07974 085 434; 07904 123 603;  
07816 410 164      **Tables - David Snartt, Des Bates, Stu Wardle**

19<sup>th</sup> Sue Morran, Sarah Brown, Teresa Calvert 07810 116641; 07811 166161; 07469  
719 018      **Tables - Steve (steve.harrold@outlook.com), John Vann**

26<sup>th</sup> Joe & Claire Costello with Bakers help 249613

**Tables - Joe Costello, Dave Pratt, Phil Baker**

### October

3<sup>rd</sup> Margaret Bloor, Sue Clarke, Sue Birkett, Julie Clark

07713 457414; 242000; 244317; 07765 032307      **Tables - David Clark**

10<sup>th</sup> Lesley Cook/Chris A/Ann Scrine with School 245208; 242432; 481928

**Tables – Steve Pratt, Chris Scrine**

17<sup>th</sup> Bev Griffiths, Sue Dobby, Jennette, Lalita 01509 890264; 245366; 07930 955  
990; 07718 701 614      **Tables Steve - [steve.harrold@outlook.com](mailto:steve.harrold@outlook.com),**

24<sup>th</sup> Judy Rowe, Felicity Manning, Marilyn Upstone 243989; 245298; 242715

**Tables - Clive Rowe, Toby Manning**

31<sup>st</sup> Glennis M, Mary Clarke, John Castle, Carolyn T. Gill Haddon 242897;  
01163 190211; 249173

**Tables - John Castle, Tom Clarke, John Vann**

### ON THE LAWN

Thank you to those villagers who hosted us at their homes. The weather has been very kind and it is a nice change for everyone

**An opportunity for everyone to catch up on Village news and activities and to meet your fellow neighbours.**

### **WE NEED YOUR HELP!**

We need some extra help to set up and run these sessions which are such an important part of our community. Some of our volunteers are 80 years young! PLEASE consider coming on board by offering one morning of your time for 3 hours every 11 weeks. Join us and meet new people or ask a group of friends if they would help too! All are welcome.

Call me on 01530 243433.

Yours In Hope Carol Ann

**Anne and David Couling**

**Newtown Linford Gardening Club**

**[www.newtownlinford.org.uk/gardening-club.html](http://www.newtownlinford.org.uk/gardening-club.html)**

The highlight of our summer programme is our annual Garden Party which is held at the home of our Chairman in one of the most beautiful parts of our village. Gazebos were erected and tables and chairs laid out to make a welcome sight. The weather was lovely and around 100 members and friends gathered in the early evening.

Members have an open bar which serves wine, beer and soft drinks, but most of all, glasses of Pimms, which are the most popular.

A meal of ham, quiche, pork

pie, cheese, egg and salad is served to all and finally there is a choice of home-made cakes produced by our Committee Members.

The final event of the evening is our enormous raffle. Every member is asked to bring a prize and there are, therefore, almost 100 prizes on the table. There is a rapid-fire ticket draw, and winners can choose their prize from the table. By the end of the evening, with a little manoeuvring, everyone goes home with a prize.

Continued on page 8

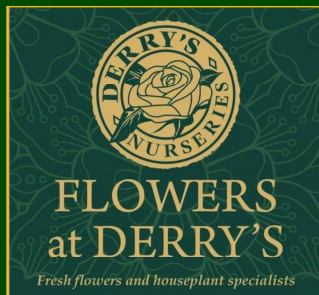


# Derry's Nurseries

Est 1976. Well worth a visit....

Main Steet, Cossington LE7 4UU

**Tel (01509) 812815 Open daily**



Serving Leicestershire and the East Midlands since 1976. We have a unique, customer focused approach and we invite you to visit us at our 11 acre site in Cossington. Whether it be compost or a shrub we stock a variety of plants for delivery or collection.



Come and see our wide variety of annuals, perennials & shrubs now in stock. We have a superb selection of Pots. Decorative stone, Sleeper Beds

Wide range of  
Compost & Growing  
Media



Seasoned Hardwood Logs, Coal & Kindling. Supplied in nets, bulk bags or loose loads. Our Hardwood bulk bag offer—delivery within 5—8 working days.

**Loyalty**

**Scheme**

Now available

**FREE DELIVERY TO LOCAL AREA**

**[www.derrysnurseries.com](http://www.derrysnurseries.com)**

**Email: [hello@derrysnurseries.com](mailto:hello@derrysnurseries.com)**

Our club has proved very popular, and membership has steadily increased to a level which we feel is the maximum we can readily manage. We have, therefore, reluctantly decided that we can take no more new members at this time and so, if anyone wishes to become a member, we will take note and then invite them to join us when vacancies arise.

However, if you want to know more about our Club, information can be found on our website, shown above, or by email at [32couling@gmail.com](mailto:32couling@gmail.com) or by telephone on 01530 242452



AN HOUR DEDICATED TO YOURSELF.  
CONNECTING MIND, BODY AND BREATH.

SUITABLE FOR BEGINNERS  
CLASS PASSES AVAILABLE

**MONDAYS 6:30-7:30PM**  
NEWTOWN LINFORD VILLAGE HALL

BOOK HERE!



**THURSDAYS 6:30-7:30PM**  
BROOKVALE GROBY LEARNING CAMPUS  
RATBY ROAD, LE6 0FF

GET IN TOUCH!

YOUR TEACHER, BECCA

INSTAGRAM: @YOGAWITHBECS  
EMAIL: [YOGAWITHBECS@OUTLOOK.COM](mailto:YOGAWITHBECS@OUTLOOK.COM)  
FACEBOOK: YOGA WITH BECS  
BOOK: <https://bookwhen.com/yogawithbecs>



# Roy Green

LETTING & ESTATE AGENTS

First Floor, 15 The Mark, Aylesbury, Bucks HP20 1JZ

MEMBERS OF THE  
ROYAL INSTITUTE OF  
CHARTERED SURVEYORS

Contact us on office@roygreen.co.uk or call (0116) 235 3009

## Our Services

**Fully Managed – 8% plus VAT**

**Let only - £525.00 plus VAT**

**Tenancy set up fee - £250.00 plus VAT  
(only payable on New or Change of tenancies)**

Members of the Royal Institute  
of Chartered Surveyors

Up to date integrated property management  
software

### NO EXTRA CHARGES FOR

- Tenancy referencing
- Inventory of property
- Floor plan for advertisement

We have 65 years experience in property management.



Roy Green Lettings & Estate Agents



roygreenlettings



Roy Green Lettings





## Coffee and Cake on the Lawn

Following early rain on the morning of Thursday 11<sup>th</sup> August, over 50 people enjoyed their coffee and cake in sunshine on the lawn at 98 Main Street. Michael and I had to cancel this last year because of the weather, so I was glad that it could go ahead this year, although sadly without him.

Many thanks to all those who helped in setting out the furniture and equipment, providing cakes - and washing up afterwards! It was a lovely morning.

**Marilyn Upstone**





## News from Newtown Linford Biodiversity

### Forthcoming events

**Saturday 5<sup>th</sup> October:** Wildlife Walk at Cossington Meadows - Meet at the Village Hall at **2pm**.

Contact walk leader Toby Manning (email [ptm@tobymanning.co.uk](mailto:ptm@tobymanning.co.uk) or tel. 01530 245 298) to help coordinate transport.

**Tuesday 29<sup>th</sup> October:** Open Evening at Village Hall. Sue Graham will be giving a presentation about the wildlife of Bradgate Park. Admission free. More details in next month's magazine.

### Wildlife verges news

We now have excellent new signage, as shown in the photo. We're very grateful to local resident Martin Yeeles who kindly designed it for us.

Groby Lane wildlife area has been increased in size by around 50% and was surveyed in June this year by David Nicholls of NatureSpot, with a total of 21 species being recorded, including 6 (eg. Cuckooflower, Pignut) that are used as indicator species for Local Wildlife Site designation. The verge was designated as a LWS some years ago but this unfortunately doesn't mean it has statutory protection. Markfield Lane verge now has a fence installed which helps to make it clear that most of the verge is a dedicated wildlife area.

Both verges are cut by Newtown Linford Biodiversity members and supporters in late summer/early autumn, with the cuttings (arising) raked off and removed. This helps grassland wildflowers

which mostly prefer a nutrient-poor soil. Other practical work is sometimes carried out during the summer, including controlling the growth of the grass which has been extremely rampant this year, as you'll have probably noticed!

Please do get in touch...

If you'd like to help with conservation work (e.g. raking) in the wildlife verges. Volunteers always welcome, and the sessions are good fun! If you'd like to make use of some of the (free) arising (e.g. bedding for livestock, composting).



# E.W. Goddard & Sons

(Established 1970)

**QUALIFIED PLUMBERS  
Bathroom and Tiling  
Specialists**

**All Building Work  
and Renovation**

\*\*\*\*\*

305 Markfield Lane  
Markfield LE67 9PR

**Telephone**

**01530 245316 or 0116 2311672  
07961 319908 or 07961 319907**

## Himalayan Balsam-pulling

Over the summer we've had several sessions of pulling up Himalayan Balsam, the highly invasive non-native plant species that reduces biodiversity and speeds up the erosion of riverbanks. The photo shows two of our HB-pulling team working along Ulverscroft Lane. Thanks to all those who have joined in with this task this year.

## Wildlife Tip

**"Go Wild for Worms!"** - Minimise hard surfacing in your outdoor space, lift unnecessary paving and plant up instead. For more ideas on how to help worms, visit the Wildlife Trusts' website ([www.wildlifetrusts.org](http://www.wildlifetrusts.org))



# GAS-SERVWELL

(Charnwood Ltd)

## Service, Repairs,

Installations of all Gas Appliances,  
Power Flushing, General Plumbing

**12 YEAR BOILER WARRANTY**

## BOILERS \* REPLACEMENTS

SAME DAY BREAKDOWN VISITS

Contact Rob:

07860 735066

01530 251315

Est 1984



[bobzgas@gmail.com](mailto:bobzgas@gmail.com)



## TENNIS CLUB

Another very busy summer season at the Club with Supper Club following Club night, Ladies Prosecco Evening, Kids Tennis with Hot Dogs, Summer Camps, Cardio Tennis, Pickleball and the Club Tournament and Music. Quiz still to come. Thank you to everyone who have been involved in making this a happen in such a small window.

### SPONSORED 24 HOUR TENNIS - June 22-23rd 2024

What a weekend we had back in June for our 24 hour tennis Marathon!!!! We managed to raise in sponsorship an incredible £1751 for the Club and The Jake McCarthy Foundation!

Thank you to everyone who took part in the tennis - over 100 of you young and old! showing your support. Especially thank you to those who took the night shifts....it was quite special playing in the early hours of the morning trying not to shout 'Great Shot' after drinking Prosecco and waking the neighbours. A huge thank you to them to for support-



ing and agreeing to it all happening next door and of course to anyone who sponsored and made donations, many who don't play tennis, some touched by Jakes story.

We finished our spectacular

weekend with an amazing exhibition match. Thank you Tommy, Jacob, Theo Coats and Ollie for putting on quite a show for us all! It was quite incredible to watch. Theo is off to an American College in September to continue his journey in tennis hoping to one day be one



of our top senior British players - watch this space!

A final thank you to the many organisers and helpers of the event. It was even better than we could of ever hoped. Thank goodness for the glorious weather.

**Club Tennis Tournament Finals Day - September 8th**  
Results in the next Magazine.



**Blossom**  
HOME CARE

**We are delivering care in this area now!**

Can we help you or your loved ones?  
Contact our team for more information today

leicester@blossomhomecare.co.uk  
0116 431 7082

part of an award-winning care brand

50 minute minimum care visits

Hollistic care plans built around your needs & wishes

A nurse-led approach to home care

App based monitoring for loved ones

Retain your independence and autonomy

Set visit times—on time, every time

**From the comfort of your home. Care Packages Available NOW!!**

## Village Directory

We have not produced a Village Directory since before COVID. It used to be a 2 yearly directory with essential services, useful phone numbers for hospitals, GP Surgeries etc along with any local business that wanted to share their details with other villagers.

You do not need to advertise in the Village Magazine for this. If you have a business and you are a villager, then please send us your details and we will add you to the directory which hopefully we will print in the October or November Magazine.

Emails to [newtownvillagemagazine@outlook.com](mailto:newtownvillagemagazine@outlook.com)

## KNELLER & KNELLER LTD

### For All Your Electrical Requirements

- \* Rewires \* Extractor Fans \* Wall Heaters
- \* Garden Supplies \* Showers
- \* Central Heating Wiring \* Burglar Alarms
- \* Security Lighting \* TV Points
- \* Telephone Points \* Emergency Lighting
- \* Wall Lights \* Storage \* Heaters
- \* Up-Grading Electrics To Present Regulations
- \* Fire Alarms \* Test & Inspections
- \* Portable Appliance Testing

All work guaranteed and complies  
to BS7671 Wiring Regulations.



Contact Kevin for a

**FREE** quotation

**T:** 0116 2873404

**M:** 07836 734828

**E:** [k.kneller@virginmedia.com](mailto:k.kneller@virginmedia.com)



Domestic \* Commercial  
Industrial

## MARTIN ALLEN

### FLOORING & FRENCH POLISHING

YOUR LOCAL  
FLOORING SPECIALIST.

All timber floors laid

All existing timber floors sanded  
and refinished

Any colour or finish

Free quotations - Call Martin.

0116 2165107

[martin@martinallen.co.uk](mailto:martin@martinallen.co.uk)

Villager Marleis was 90 on the 13<sup>th</sup> August. The celebrations started early  
Photo from Jan Croft





# Music



# Quiz

Village Hall  
Everyone welcome

**Friday 4<sup>th</sup> October 2024**

Tables of 8 - £15 per person

Ploughman's Supper  
Licensed Cash Bar



Doors open 6:30pm  
for 7:15pm start



**Telephone for tickets please contact  
Carolyn on 07896 960676  
01530 249173**



# THE BRADGATE

NEWTOWN LINFORD



**THE BRADGATE—COUNTRY DINING AND DRINKS**

Why not book our private dining area, The Loft for your special Celebration (14-32 Guests), for private dining or a meeting. No room hire charge, if dining with us. WiFi included.

### **Family Pizza Deal**

**2 Adult & 2 Kids**

**Pizzas & 2 Sides**

**for £35**

Available Tuesday—Friday  
3pm-6pm

Two Pizzas for  
£22

Available Mon  
12 noon—3pm  
and Tuesday –Fri  
12noon to 6pm



**Festive Fayre starts 2nd December 2024 (does not include Sundays)**  
Bookings now been taken

**Tel: 01530 242239**

**[www.thebradgate.com](http://www.thebradgate.com) | [contact@thebradgate.com](mailto:contact@thebradgate.com)**



**28th & 29th September 2024**

**10.00am - 4.30pm**

**LOTS OF 'MUSIC THEMED'  
SCARECROWS**

\*PRIZES BASED ON JUDGES & PEOPLES CHOICE

*All weekend our pubs, cafes & village clubs  
will host events and activities for the whole family*

### **Saturday 28th**

Scarecrows in the village and Bradgate Park

Stall holders, tea, coffee & cake  
at Newtown Linford Village Hall



### **Sunday 29th**

Scarecrows in the village and Bradgate Park

Caroline & Claires PreSchool will have activities, stalls  
& refreshments in Newtown Linford Village Hall



Newtown Linford Cricket Club  
Annual Beer Festival  
27th - 29th September



For more information, please email [britfitgirl@gmail.com](mailto:britfitgirl@gmail.com)  
and put **SCARECROW** in the heading.

The theme for this year's Scarecrow Festival  
Taking place 28th/29th September is Music



## Newtown Linford Scarecrow Festival 2024

Hello All ☐ We are so pleased to announce that Newtown Linford Scarecrow Festival will be returning for 2024. This year's theme is **MUSIC** & you can get as creative as you'd like with your designs as there will be no specific requirements for your work. This year we will have a FABULOUS raffle, the Beer Festival at the Cricket Club & a wonderful Scarecrow Patch at Bradgate Park (for those of you who wish to take part but perhaps feel you live out of walking distance). As usual our lovely Village Hall will be open all weekend offering teas, coffees, cakes & great stalls.

Please find attached at entry form - Either fill in and post in the mail box at Linford Farm, 36 Main Street or email to [Brit-fitgirl@gmail.com](mailto:Brit-fitgirl@gmail.com) with SCARECROW ENTRY clearly marked in the subject heading.

This years judging criteria will be Judges Choice 1<sup>st</sup>, 2<sup>nd</sup> & 3<sup>rd</sup> & Peoples Choice 1<sup>st</sup>, 2<sup>nd</sup> & 3<sup>rd</sup>.

### **NEWTOWN LINFORD SCARECROW FESTIVAL ENTRY**

**FAMILY NAME:** \_\_\_\_\_

**SCARECROW NAME:** \_\_\_\_\_

**LOCATION/ADDRESS:** \_\_\_\_\_

**(If you wish to put your Scarecrow at Bradgate Park, please indicate above)**

***Please have entries in by WEDNESDAY SEPTEMBER 18<sup>TH</sup> to be included in the competition. Thank you !***

Online Services

<https://www.facebook.com/allsaintsnewtownlinford/live>

<https://www.facebook.com/stpetersglenfield/live>



**SUNDAY SERVICES**

<b>September</b>	<b>Glenfield</b>		<b>Newtown</b>	
1st				
Fourteenth Sunday of Trinity	8:30 9:30	Holy Communion Breakfast Church	10am	Holy Communion <i>John Woomer</i>
8th				
Fifteenth Sunday of Trinity	10am 6pm	Holy Communion Teaching Evening	10am	Morning Prayer <i>John Woolmer</i>
15th				
Sixteenth Sunday of Trinity	10am	Morning Workshop	10am	Holy Communion <i>Richard Trethewey</i>
22nd				
Seventeenth Sunday of Trinity	10am 4pm	Holy Communion Crumpet Church	10am	Harvest Thanksgiving <i>Richard Trethewey</i>
29th				
Eighteenth Sunday of Trinity	10am	Holy Communion	10am	Celebration of Creation <i>Jane Woolmer</i>
Every Wednesday at Glenfield	10am	Midweek Holy Communion		

**Online Services**

<https://www.facebook.com/allsaintsnewtownlinford/live>

<https://www.facebook.com/stpetersglenfield/live>



## Regular Events:

Bell ringer's practice: Monday 8pm

---

Website: [www.allsaintsnewtownlinford.org.uk](http://www.allsaintsnewtownlinford.org.uk)

## CHURCH REGISTERS

### Weddings

6th July ~ Rosie Sugden & Charles Marshall

13th July ~ Anna Coleman & Isaac Sanders

---

### Baptisms

None

---

### Funerals

11th July ~ Margaret Webster

*We extend our sympathy and prayers to the family and friends, and pray that they may find peace through faith in Jesus Christ our Lord.*

---

### Church Contact Details

Revd Richard Trethewey  
(Rector) 0116 287 1604  
[richard@allsaintsnewtownlinford.org.uk](mailto:richard@allsaintsnewtownlinford.org.uk)

Hayley Moore (Church Administrator)  
0116 239 3768

[office@bradgatechurches.org.uk](mailto:office@bradgatechurches.org.uk)  
[www.allsaintsnewtownlinford.org.uk](http://www.allsaintsnewtownlinford.org.uk)

Church Warden: Michele Petty,  
[m.petty@ulverscroft.co.uk](mailto:m.petty@ulverscroft.co.uk)

## NEWTOWN LINFORD C. C. – PRESIDENT’S DAY

### Chris Scrine

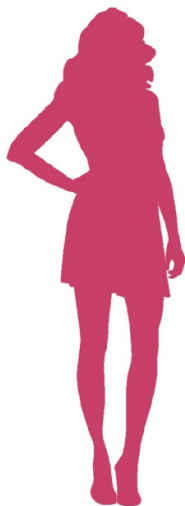
The Club celebrated the 2024 President’s Day on Sunday 7<sup>th</sup> July. Considering the inclement weather experienced up to this point, with the exception of one heavy shower in mid-afternoon, we were able to enjoy the day in relative comfort.

The proceedings commenced with an Under 13 fixture followed by a mid-day reception and speech from our new President, India Felton. During her speech she presented Duncan Kingham with the ‘Mike Baskill Trophy’ awarded for outstanding service to the Club. We then moved on to the main event - a challenge match between the First XI and the Second XI of the 2011 season. This match was a celebration of both sides topping their relative divisions for that season. In between innings we were treated to a magnificent buffet enjoyed by all.

The game itself proved to be a very close affair with the First XI winning by the margin of just eight runs. It was great to see so many players who represented the Club that year making themselves available for this fixture. Unfortunately, for one or two of us, myself included, this success was achieved thirteen years ago and, therefore, playing in this game proved to be a step too far!



Back to the Future: Members of the 2011 First and Second XI's.



**SOS** Charity  
Fashion Shows

*Fundraising*  
**FASHION SHOW**  
*& Shopping Event*

**YOUR FAVOURITE BRANDS AT UP TO 75% OFF**

MARKS & SPENCER WHITE STUFF WALLIS  
EVANS PLANET TOPSHOP NEXT MONSOON  
HOBBS BODEN WAREHOUSE & MANY MORE

PLUS *FRENCH & ITALIAN DESIGNER WEAR*

**SIZES**  
**6 TO 30**

**Save the date!**

*Tuesday 3rd September, 2024 @ 6:30*

*At The Linford*

*66 Main Street*

*Newtown Linford*

*Leicester LE6 0AD*

Fashion Show and raffle to raise funds for **MacMillan**  
Tickets £5.00 on sale from 1st August at The Linford

BRANDS SUBJECT TO AVAILABILITY

DEBIT & CREDIT CARDS ACCEPTED

CHARITYFASHIONSHOWS.CO.UK

## Michael's Maundy Money

The congregation and visitors to All Saints church in the village can now see a display of the gift of Maundy Money that Michael Upstone received from Queen Elizabeth II in April 2017, the final time that the late Queen performed this duty in person as it did not happen during the pandemic. The ceremony derives from Christ's washing of the disciples' feet at the Last Supper, when he gave them the commandment, or 'mandatum,' to love one another. Originally 'real' money given to the poor, the coins themselves are now non-circulating coins and are contained in two leather purses, the white one containing coins to the value of same number of pence as the monarch's age, and the red one containing a £5 and a 50p coin.

Recipients are nominated by local clergy and chosen for their services to their churches or communities. Michael was very grateful to the Rev. Richard

Trethewey for his nomination and attended the ceremony in Leicester Cathedral with Rosemary on Maundy Thursday in 2017. Following Michael's death in March, I wanted to carry out his wishes that some of the gift should be displayed in our Church so that people could see the coins and purses – they have no monetary value!! The display is in his memory.

**Marilyn Upstone**





## Degree Congratulations

**Congratulations Abbie Bradley in achieving her degree in Marine Biology. Abbie has lived in the village since the age of 4 and went to Newtown Linford Primary School, She studied Marine Biology at Plymouth University.**

**Debbie and Greg are so proud of her and enjoyed her graduation ceremony in July.**



# MARKFIELD LOCAL HISTORY GROUP

**Tuesday 17<sup>th</sup> September 2024 at 7.30pm**  
**Speaker Brian Johnson**

**At Markfield Methodist Church,  
Main Street, Markfield LE67 9UU**

## **MADE IN LEICESTER**

**COME AND FIND OUT ABOUT THE HISTORY  
OF SOME OF LEICESTER'S MOST ICONIC  
COMPANIES, SOME OF WHICH ARE NOW  
GLOBAL BRANDS  
DO YOU KNOW WHICH ONES???**

The three principal industries in Leicester were Boot and Shoe, Hosiery and Engineering. Many thousands were employed in these industries, particularly during and after the industrial revolution. By the 1950s, Leicester was considered the second richest city in Europe. The hosiery industry alone was earning the equivalent of over £100 million per year and accounting for a third of the country's exports.

Many Leicester companies became household names and so even people who didn't grow up in Leicester will still be familiar with them. Sadly, many of those companies are no longer with us. But what of the other companies though, the ones that are still with us? Many have weathered the storms of recent years and are still performing well. Some are big names we regularly see advertised on the television, but not many people realise they have their origins here in Leicester.

**Adults £3 for visitors or become a member for £8 per year  
(Jan-Jan) and then no additional charge for talks/activities.**

**[www.markfieldhistory.org](http://www.markfieldhistory.org) – FB Bygone Markfield**

Vicky and the team  
welcome all customers  
to YOUR local



66 Main Street, Newtown Linford  
Tel: 01530 244012  
thelinford.co.uk

- ❖ Quiz Night every Wednesday, 8pm start.
- ❖ Regular entertainment – details on Facebook, Instagram, and Notice Board in the lounge.
- ❖ Room Hire available, ask at the bar for details.
- ❖ Free Wi-Fi.



**BAR SNACKS  
AVAILABLE**

Reduced prices on all beers, wines &  
spirits for Members. Membership  
Forms are available at the bar.

Opening Times: Monday - Thursday 5pm – 11pm  
Friday 4pm–11pm  
Saturday 12noon–11pm. Sunday 12noon – 8pm.



01530 244012  
newtownlinfordclub@gmail.com



**BROUGHTONS**  
— LIGHTING & IRONMONGERY —



Showroom Open  
Monday - Saturday 10am - 4pm

The Old Cinema Cropston Road Anstey Leicestershire LE7 7BP  
0116 232 3175  
www.broughtons.com sales@broughtons.com

## Village Archive

This time I thought it would be interesting to include part of our Village Story from its earliest beginnings. The name of the village describes the new settlement by the ford over the river, where the lime trees grow.

The village did not exist at the time of the Domesday Book in 1086 but probably had its earliest beginnings during the 13th century.

1241 shows the first documented reference to Bradgate Park, when the Earl of Winchester is given the right to take deer with nine bows and six hounds.

1280: Newtown was included collectively as one village with Rothley , Swithland, Anstey, Bradgate and Cropston.

1293: There is a first mention of rate paying tenants in Newtown Linford.

1349: The Black Death reaches Leicestershire and there is no further colonisation into Charnwood Forest.

1377: 62 people were liable for tax in Newtown Linford, 41 in Bradgate (but only 29 pay!).

Circa 1400 earliest parts of Newtown Church were built;

1436: Dendrochronology dating for felling of earliest timbers used in the construction of 11 and 13 Main Street, which were built as one house.

1445: The Manor of Groby Including Newtown Linford and Bradgate Park passed by marriage from the Ferrers family to the Grey family.

1457: Sir John Grey marries Elizabeth Woodville.

1460 : Sir John Grey was killed at the second Battle of St Albans (Wars of the Roses), leaving two young sons (later known as the princes in the tower).

1461: The Greys lose their estates when Edward IV becomes King

1464: Edward IV secretly marries Elizabeth Woodville.

1485: Battle of Bosworth Field. Henry Tudor becomes King.

C1500: Sir Thomas Grey enlarges Bradgate Park and starts building a modern brick mansion. The dispersed hamlet of Bradgate (largely where the reservoir is now) cleared and the residents moved. The mansion is first occupied by the Grey family in 1501.

Sources: D A Ramsay, Bradgate and its villages and our own Joan Stevenson.

## Newtown Linford Brownies

---

At Brownies we were working towards the Aviation Badge. We were making and decorating a Paper Airplane. After that we did a competition to see who could throw it the furthest. Afterwards we played lots of fun games one of them was 'Find the picture first'.

The following week we played many more games like 'The Alphabet Game', 'McDonald had a Fish Farm' and the 'Bus Game' 3 times. At the end we tried to eat Donuts off Strings without using our hands.

It was lots of fun!

Genevieve Musselwhite aged 7





# Cooks Farm Shop & Country Supplies



**For all your Animal, Pet & Bird Feed**



Did you know that we sell:  
Equestrian Supplies - Pet Food & Supplies  
Timber, Fencing & Gates - Electric Fencing  
Bird Food including Mixes & Straights  
Pigeon Food & Supplies - Fish Food  
Point of Lay Hens & Poultry Food - Coal & Logs



**Visit our Website: [www.cooksfarmshop.co.uk](http://www.cooksfarmshop.co.uk)**

Markfield Lane, Newtown Linford LE6 OAB

Opening Times: Monday - CLOSED

Tuesday to Saturday 9am - 5pm Sunday 10am to 1pm

**Telephone 01530 242214**



**Planning application  
P/22/1031/2.**

Just an update about the planning application for 115 dwellings on the site adjacent to Markfield Lane. This application is still proceeding through the planning process. I received information from Charnwood Borough Council that this application would be decided at a Plans Meeting at the Council on 22<sup>nd</sup> August. I was devastated to read on the website, Thursday 8<sup>th</sup> August, that the case officer stated 'I am currently preparing the committee report with a recommendation of approval'. On Tuesday 13<sup>th</sup> August, I received an e-mail from the case officer stating 'I would like to confirm that the application will not be presented to Members at the August Plans Committee due to some matters being unresolved'.

I will be actively working to understand what the unresolved matters are, which prevented this application going to the 22<sup>nd</sup> August Plans Committee Meeting. I will still be revisiting the planning reasons why development should not be allowed on this site. My latest submissions are now on the Council website. I am grateful to all the residents who

have registered their objections with Charnwood Borough Council. This application may now come to the next Plans Committee meeting on Thursday 26<sup>th</sup> September starting at 5pm. I do hope if and when this application is decided at a Plans Committee meeting, many residents that are able will attend.

**Charnwood Local Plan.**

A consultation is underway over proposed changes to the draft Charnwood Local Plan 2021-37 as the process to develop it reaches an advanced stage. The draft Local Plan provides a robust strategy for growth in Charnwood and identifies how the Borough will meet Government targets for new homes, as well as providing employment land and critical infrastructure. It will also help safeguard the environment. Several phases of consultation have been carried out in recent years and the plan is currently being scrutinised by planning inspectors in the examination phase. Following a series of public hearings, there is now a consultation on some proposed changes, or main modifications. The closing date for the

consultation is 5pm on Wednesday 4<sup>th</sup> September.

For more information about the consultation and how to take part, please visit

[www.charnwood.gov.uk/localplan](http://www.charnwood.gov.uk/localplan)

When the consultation ends, the planning inspectors will consider any comments made before writing a report to the Council about whether Charnwood Local Plan 2021-37 is sound, based on the changes made as part of the main modifications consultation. The Council can then consider adopting it.

### **Two people Fined.**

Two fines totalling £800 have been issued following reports of fly-tipping in Charnwood. The Borough Council is continuing to act against those illegally dumping waste in the area. People are also being encouraged to report issues to Charnwood Borough Council. If you spot a fly-tip in Charnwood or fly-tipping taking place, please report it using the Council's online form.

For me, it was particularly pleasing to see one of the people fined was for fly-tipping domestic waste on Deans Lane, Woodhouse Eaves, which is in my Forest Bradgate Ward. This was reported to the Council on 10<sup>th</sup> June 2024. The fly-tip of black bags and cardboard boxes also contained evidence linking it to an individual from Loughborough who admitted the offence, leading to a £400 fixed penalty notice.

People have a legal duty of care to take all reasonable steps to ensure their waste is disposed of in the correct way. This includes using authorised waste carriers to dispose of waste and make sure the carrier has a license from the Environment Agency. You can find out more details on the Council's website about authorised waste carriers. The fixed penalty notice rates from 1<sup>st</sup> July 2024 have increased, for fly-tipping from £400 to £1000.

### **Charnwood Small Community Grants.**

Just a quick reminder, the Charnwood Small Community Grants are now available from Charnwood Borough Council. These have replaced the Member Grant Scheme. In the past I was able to help local groups obtain funding for different types of projects that benefitted local communities within my Ward.

The new Charnwood Small Community Grants programme can provide up to £750 for the activities of properly constituted Voluntary and Community organisations and projects in Charnwood, including organisational running costs and projects (for up to one year) and one-off contributions for equipment costs for projects with community benefit.





## Newtown Linford Neighbourhood Watch - A member of the Parish Council



Hannah Shaw, Parish Council Clerk,

Tel: 01530 249945

Email: [clerk@newtownlinfordparishcouncil.gov.uk](mailto:clerk@newtownlinfordparishcouncil.gov.uk)

Website: [www.newtownlinfordparishcouncil.gov.uk](http://www.newtownlinfordparishcouncil.gov.uk)

### Window security

Burglars target windows as they can offer easier access than doors. Check how your windows look from the outside, removing potential access points where you can.

Are there walls, bins or garden furniture that could be used to reach windows?

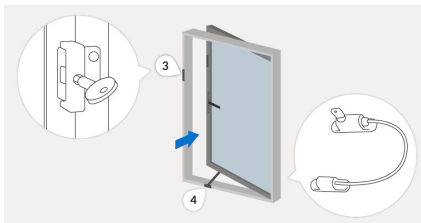
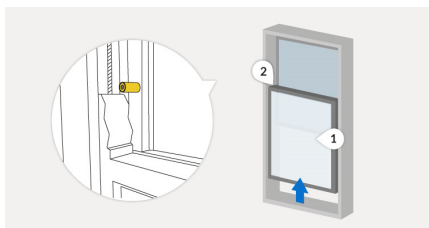
For windows that are within reaching distance such as ground floors, see our tips below.

1. Laminated glass or security film is recommended for ground floor and accessible windows.

2. Sash stops prevent anyone opening the sash window enough to climb through.

3. Key operated locks are recommended for window types that open out, rather than up, and any ground floor or accessible windows. Remember, window locks are only effective if used, so check that you have locked them before you leave home or go to bed.

4. Window opening restrictors allow you to ventilate your home but make sure they can't be picked and unlocked from outside.



### Further advice

Burglars have been known to use ladders to access upper windows that appear to be unlocked. This is to avoid intruder alarm sensors on the lower floor. These ladders are either found in a garden or brought by the suspect. You should make sure windows on upper floors have locks or sash stops. You should also extend any alarm sensor coverage to upper rooms.

If you're replacing your windows, always consider a security accredited product as these windows are tested to British standards and are insurance approved. A good standard is PAS 24 2022.

A locksmith belonging to the [Master Locksmiths Association](http://www.masterlocksmiths.co.uk) can suggest the correct standard of window lock and offer advice on upgrading window security.

Please note the recent change in email and website addresses

**NEWTOWN LINFORD PARISH COUNCIL  
PUBLIC NOTICE**

Please note that Newtown Linford Parish Council's ongoing safety programme, involves the inspection of all memorials above 2ft in height at Newtown Linford Cemetery.

Testing shall commence **SEPTEMBER 2024**.

Any memorial that has not met the health and safety requirement will be provided with a notice and maybe temporarily laid down. Newtown Linford Parish Council shall be in touch with the registered grave owner, providing them with details and the actions required to make the memorial safe.

For your own safety, and that of all visitors to the cemetery, **DO NOT** attempt to test a memorial yourself. Any repair works must be undertaken by a qualified stone mason and the Parish Council are to be informed of the works being carried out.

We appreciate your assistance and co-operation in ensuring the cemetery is a safe place of everyone to visit.

If you have any queries please contact us on 01530 249945.

**Holcliffe Ltd  
Est 2013**

Carpentry & Joinery  
Property Maintenance  
Building Services

Domestic & Commercial  
Timber Window / Door  
Repair, Refurbishment &  
Replacement  
Bespoke &  
Conservation Joinery

**Call James on  
07908 396260  
Holcliffe.co.uk**

**Problems  
With Your Feet?**

Home Visits & Cropston Surgery

- ∞ Ingrowing Toenails
- ∞ Fungal
- ∞ Corns
- ∞ Callous
- ∞ Verrucae

**Johanna Partridge MCFHP MAFHP**

Foot Health Practitioner

CALL 0116 235 1971

Or 0788 781 7370

Registered Member of the British  
Association of Foot Health Professionals

**Hannah Shaw, Parish Council Clerk Tel: 01530 249945**

**Email: [clerk@newtownlinfordparishcouncil.gov.uk](mailto:clerk@newtownlinfordparishcouncil.gov.uk)**

**Website: [www.newtownlinfordparishcouncil.gov.uk](http://www.newtownlinfordparishcouncil.gov.uk)**

**News from Newtown Linford Parish Council**

**Have you looked at the website recently? [www.newtownlinford.org.uk](http://www.newtownlinford.org.uk)**

Greetings!

### **Councillor Vacancy**

Newtown Linford Parish Council has a Vacancy for a Parish Councillor and would like to hear from anyone who might be interested. We have 10 or 11 meetings per year, roughly once every six weeks and dates are set 3 months in advance. Please get in touch if you would like more information.

### **Village Hall Noticeboard**

You may have noticed some remedial repairs have been carried out to the Parish Council noticeboard outside the Village Hall.

In August, it was reported via the Community WhatsApp group that one of the doors would not close properly. Upon closer inspection, I also found one of the supporting posts had rotted and the noticeboard was at risk of falling. Temporary safety repairs were carried out but the noticeboard has seen better days and it has been decided that a replacement noticeboard is required as soon as possible.

A like-for-like replacement is costly (around £3k) but NLPC will also

consider other more affordable options to wood such as aluminium. However, any changes would be dependent upon the necessary permissions being granted within the conservation area.

On with more news....

### **Bob Bown Memorial Field**

Sadly, we have had some damage caused to one of the benches at the Bob Bown Park. Fortunately, a repair has been possible on this occasion. If anyone has any information with regards to the vandalism, please get in touch in confidence. The Police have been informed.

### **Cemetery and Churchyard**

As mentioned in the July/August edition of the Village Magazine, Memorial Headstone Inspections will be carried out at both the Cemetery and Churchyard week commencing 2<sup>nd</sup> September.

I am aware that a number of memorials will require works to make them safe and compliant with current legislation. When the inspection is carried out, any memorials that are deemed to be unsafe and requiring

.immediate action, may be laid flat to ensure everyone's safety. A note will be placed on all memorials identified as part of the inspection, asking grave owners to make contact with me. A detailed report will explain what works are required for each memorial and the grave owner will be asked to make the necessary arrangements.

I will be on site during the inspection and where possible, I will make contact with any known grave owners where a problem has been identified, to discuss the works required.

In the event a grave owner cannot be contacted, the Parish Council will need to consider what action to take.



[www.linriver.co.uk](http://www.linriver.co.uk)



Bespoke joinery by Newtown Linford craftsman, providing a design and build service.

- Cabinets
- Wooden Windows
- Shelves
- Doors
- Hand Carved Signage
- Repairs

All made locally from sustainably sourced hardwoods and softwoods.

07968 356868  
hello@linriver.co.uk  
 @linriverjoinery

# KEITH SMITH (ANSTEY) LTD



6 STADON ROAD ANSTEY LE7 7AY - TEL: 0116 2362395 - sales@keithsmithltd.co.uk

## FAST FREE LOCAL DELIVERY



### Bosch HBS534BS0B

- single electric oven
- ✓ Stainless steel
- ✓ 3D hot air
- ✓ Digital display
- ✓ **2yr Guarantee**
- ✓ Integral grill

Now Only **£399.00**



### SONY KD32W800P1U

- 32" HD SMART TV
- ✓ HD READY DISPLAY
- ✓ FREEVIEW PLAY
- ✓ GOOGLE ASSISTANT
- ✓ 3 HDMI PORTS
- ✓ CATCH UP TV

Now Only **£349.00**



### Blomberg LWA18461W

- Washing Machine
- ✓ **1400rpm** Spin Speed
- ✓ **8Kg** Load Capacity
- ✓ 28 Min Fast Full Load
- ✓ 15 Programmes
- ✓ A Rated

Now Only **£399.99**



### BOSCH KGN27NLEAG

- ✓ 55cm Fridge-freezer
- ✓ Frost-free
- ✓ **50/50**
- ✓ **2551 total capacity**
- ✓ 2 year warranty

Now Only **£479.00**



### VACUUM CLEANERS

- ✓ SEBO
- ✓ SHARK
- ✓ BOSCH
- ✓ VAX
- ✓ HENRY

FROM **£99.99**



### Blomberg LDF52320W

- DISHWASHER
- ✓ 15 Place Settings
- ✓ Digital display
- ✓ Hygiene function
- ✓ **5yr Guarantee**

Now Only **£429.99**

### Fitted Kitchens

We are pleased to announce that we are agents for A.W.E Kitchens and Bedrooms

Please come and see our updated In-store display or call 01162362395 for further details.

### FREE DELIVERY with Personal Service

"Ask About our Same Day/Next Day Installation and Removal Service"



**Head for Change' is one of the charities donations went to in memory of Eric Langton.**

'Head for Change' is a very small charity, funded entirely by donations. We believe that there is a growing awareness of the risks of brain injury in football and rugby and, with your support, we are determined to do all we can to make these sports safer. With your help, we have exciting plans in the pipeline, including an education programme, further research initiatives and a brain bank programme. Your donation will certainly help us in raising further awareness, educating and supporting those that need it.

Set up by Melanie and Alix Popham (retired international Welsh rugby player and Dr Sally Tucker (NHS Surgeon with special interest in medical ethics and Law). <https://headforchange.org.uk/>

### **Booking of Newtown Village Hall**

#### **To book the Village Hall**

Contact Hannah Shaw,  
Parish Council Clerk

### **Contributions to Village Magazine**

Can we have your contributions for the **October 2024** issue by **15<sup>th</sup> September 2024** please.

**Send to the Editor, Carole Heubeck,  
5 Grey Crescent, Newtown Linford (01530 244790).**

**E-mail [newtownvillagemagazine@outlook.com](mailto:newtownvillagemagazine@outlook.com) &  
[heubecks@gmail.com](mailto:heubecks@gmail.com)**

**Please could you send any emails to the above email addresses. If you do not receive an acknowledgement of your email from the gmail account within 3/4 days - please contact Carole, the Editor direct on the above number to check we have received it. The village email is not checked so frequently but I don't lose articles from there!**

The opinions expressed by the contributors are not necessarily those of the Editors and they reserve the right to amend, shorten or not print any article or advertisement submitted for publication. Whilst every effort has been made to ensure the accuracy of the information printed in this magazine, and advertisements are accepted in good faith, no liability can be accepted for loss, damage or claim of any kind incurred by the reader.

# COVERING *Martin Page* YOUR LOCAL

The Newtown Linford Area

**Tree**



**Surgeon**

**charnwood**

*Have you considered your trees may need some maintenance from time to time. Are your trees maybe too tall blocking light, unsafe or untidy?*

*Or maybe you need to remove that stubborn stump.*

*Do your hedges, Conifers or shrubs need trimming.*

*With 30 years of experience working with trees in your area, I would be pleased to offer you free advise and a free quotation.*

**I also sell high quality firewood logs**



**call me now on**

**01530 251312**

Constantly Recommended



- Fully Insured
- Local family business
- Open & tidy service



# PEST CONTROL

DOMESTIC • COMMERCIAL • INDUSTRIAL



**Which?**  
Trusted trader



**Guaranteed Service  
No Add On Charges**

**Wasps \* Fleas \* Ants \* Rodents \* Bird  
Control \* Fly Killers \* Fly Screens \*  
Clinical & Sanitary Waste Disposal**

FOR A FAST, RELIABLE RESPONSE

**CALL FREE ON**

**0116 234 0078**

**Target**

ensuring a pest free environment

[www.targetpestcontrol.co.uk](http://www.targetpestcontrol.co.uk) | [Info@targetpestcontrol.co.uk](mailto:Info@targetpestcontrol.co.uk)

# Anstey & District

Est. 1992 Independent Funeral Services

0116 234 0548

We can take care of every detail, advise and help you on each and every step of the way.

- Qualified Funeral Directors
- Floral Tributes arranged
- Hearse, Limousines and alternatives available
- Monumental Service
- Car parking available
- Online tribute and donation profile
- Catering suite
- Chapels of rest
- Funeral plans available
- 24 hour service



Funeral arrangements can be made in the comfort of your own home if preferred.



Golden Charter  
Funeral Planning for Life Ltd.

Talbot House, Leicester Road, Anstey, Leicester, Leicestershire LE7 7AT  
Email: [talbotthouse@ansteyfunerals.com](mailto:talbotthouse@ansteyfunerals.com) Website: [www.ansteyfunerals.com](http://www.ansteyfunerals.com)