

# **ISSUE NUMBER 65**

## **CONTENTS**

### **July/August 2009**

<b>Church News</b>	<b>3/4, 24/27</b>
<b>All Saint's Fellowship</b>	<b>5</b>
<b>Youth Club Leader req</b>	<b>6</b>
<b>The Linford Gala Day</b>	<b>8</b>
<b>Ramblers</b>	<b>11</b>
<b>Bradgate Flower Club</b>	<b>13, 18-31</b>
<b>Music Quiz</b>	<b>13</b>
<b>Scarecrow Festival</b>	<b>15</b>
<b>Grobby Community College</b>	<b>16</b>
<b>From the Records</b>	<b>32</b>
<b>Newtown Linford School</b>	<b>34-36</b>
<b>Gardening Club</b>	<b>36</b>
<b>Village News</b>	<b>38</b>
<b>Brownies</b>	<b>40</b>
<b>Neighbourhood Watch</b>	<b>42</b>
<b>Parish Council</b>	<b>44</b>
<b>David Snartt</b>	<b>44</b>



# pre-printed adverts



***Pastoral Letter from Keith Wignall, Reader in the Bradgate Team  
'Glimpses of the Kingdom'***

One of the pleasures of going away is to bump into the unexpected ... like the hot and weary priest who came by our caravan while we were staying in Brittany a few years ago. He was part of an organisation which looked after holiday makers abroad – so long ago I can't remember its name.

The good Reverend was hot, tired and dispirited by the lack of response he had been getting from the campers. The message he seemed to be getting was: "leave us in peace" ... or words to that effect.

We offered this good man a cup of tea, and heard all about his ministry. We ended up in the local Catholic Church whose Priest had very kindly lent him his Church for an Anglican Service, helping him out a bit.

The Service was refreshing and worthwhile, although a French lady had put her head round the door and asked with a puzzled frown: "Vous êtes Anglican?"

I admired those sacrificial Ministers who spent their summer holidays ministering to British holiday makers abroad. Despite the rebuffs, they had vision, courage and above all, heart.

Some years ago, our family went to Wales for a holiday. It was in a little village called Treletert, near St Davids. We were staying in a cottage and just down the road was a small Welsh Chapel, which looked very quaint and which we decided to visit.

We didn't know what to expect as we entered. Except there was a look of slight consternation on the face of the Deacon manning the door.

"Our service is in Welsh today," he said apologetically, "it always is on the second Sunday, but please wait here a moment.." and disappeared.

A few minutes later the Deacon returned, and said, "I've had a word with the Pastor, and he says we will hold the service in English, today".

Now my first thought was the joke about the lower league football ground, where, when someone rang up to find out when the kick off was, was asked in turn: "When can you get here?"

But I was wrong. The Chapel was more than comfortably full of a



***Pastoral Letter from Keith Wignall, Reader in the Bradgate Team  
'Glimpses of the Kingdom'***

One of the pleasures of going away is to bump into the unexpected ... like the hot and weary priest who came by our caravan while we were staying in Brittany a few years ago. He was part of an organisation which looked after holiday makers abroad – so long ago I can't remember its name.

The good Reverend was hot, tired and dispirited by the lack of response he had been getting from the campers. The message he seemed to be getting was: "leave us in peace" ... or words to that effect.

We offered this good man a cup of tea, and heard all about his ministry. We ended up in the local Catholic Church whose Priest had very kindly lent him his Church for an Anglican Service, helping him out a bit.

The Service was refreshing and worthwhile, although a French lady had put her head round the door and asked with a puzzled frown: "Vous êtes Anglican?"

I admired those sacrificial Ministers who spent their summer holidays ministering to British holiday makers abroad. Despite the rebuffs, they had vision, courage and above all, heart.

Some years ago, our family went to Wales for a holiday. It was in a little village called Trelettert, near St Davids. We were staying in a cottage and just down the road was a small Welsh Chapel, which looked very quaint and which we decided to visit.

We didn't know what to expect as we entered. Except there was a look of slight consternation on the face of the Deacon manning the door.

"Our service is in Welsh today," he said apologetically, "it always is on the second Sunday, but please wait here a moment.." and disappeared.

A few minutes later the Deacon returned, and said, "I've had a word with the Pastor, and he says we will hold the service in English, today".

Now my first thought was the joke about the lower league football ground, where, when someone rang up to find out when the kick off was, was asked in turn: "When can you get here?"

3 But I was wrong. The Chapel was more than comfortably full of a



lively looking group of people! I was impressed by these good Christian people who would put their cherished traditions aside for a group of strangers... foreigners at that (at least I was!).

Every now and again, wherever one goes, we can see glimpses of God's Kingdom in which ordinary people do extraordinary things – or is it ordinary things extraordinarily well?

This month (as I write) we say farewell and heartfelt thanks to the Worsfolds for their Ministry to us over the years, and pray for a fruitful Ministry at the Martyrs Church. Richard and Jenny have given unstintingly to the people of the three villages over the past ten years. They will leave shoes which will be hard to fill by their successors.

We give thanks for an extraordinary family who have not only done extraordinary things, but have done those “ordinary” Christian things extraordinarily well.

Many thanks and Godspeed, Richard and Jenny and the family.

**Keith**

### **Team Parish News**

#### **The Annual Team Parish Picnic!**

On Sunday 19<sup>th</sup> July we are having a Team Parish Service at Groby, starting at 10.30am, followed by picnic in Bradgate Park. This will be a great way to round off the term and we hope all our congregations will come and join in.

#### **News from Louise Corke**

Louise writes from Malaysia that she is finding the mix of Chinese, Indian and colonial cultures fascinating, the humidity stifling but all in all spiritually challenging! She returns from study leave at the beginning of August.

### **PROGRESS TOWARDS A NEW TEAM RECTOR**

Following the open meeting which was held with the Archdeacon on 16<sup>th</sup> May at Ratby, the PCC completed the production of the Parish Profile, a portrait of the Parish in practical terms which is available to all applicants. The profile was approved by the PCC on 2<sup>nd</sup> June.

The Post was advertised in the Church Times on 11<sup>th</sup> June for three weeks with a closing date of 30<sup>th</sup> June. The advertisement can be seen on the Church Times website. Short listing will take place on 1<sup>st</sup> July and interviews will follow on 10<sup>th</sup> July. There may be some opportunity for Church Members to meet the candidates on that day.

Please pray for the right person to come forward to join us.

## VILLAGE DIARY

### **July**

3rd Gardening Club  
4th Groby Community College Family Fun Day  
4th Ramblers  
18th - 20th Choral Society - Summer Celebration  
27th Parish Council Meeting  
28th Gardening Club Trip

### **August**

5th Bradgate Flower Club  
8th Ramblers  
18th All Saints Fellowship  
24th Parish Council Meeting  
31st Linford Gala Day

### **Regular events**

1st Sunday in the Month @11am Sunday School - next one September  
Sunday Evenings at the Linford - 7-10.30pm Lady Jane Grey Club for single people

### **ALL SAINT'S FELLOWSHIP AND WELCOME CLUB.**

My last contribution to the Parish Magazine appears to have caused some confusion, so here we go:- The Welcome Club is not closing for July and August, It remains open the whole year round every Thursday morning to welcome you all with tea, coffee, biscuits and friendship.

We come to the end of the Welcome Club Helpers rota on 25th June 2009. Hopefully we have informed all the ladies and gentlemen who have supplied and served their cakes and scones etc. and that, in future we ourselves will purchase and serve tea and biscuits to each other. In the last magazine I did in fact thank all the people who have looked after us so well during the past years.

There are no Fellowship meetings in July.

On 18<sup>th</sup> August at 2.30pm. Mrs. Anne Halsey is taking us on a trip to Egypt!. Anne is known to us as a very interesting speaker so please do attend and give her a warm welcome.

### RICHARD.

You must all be aware by now that Richard , our Team rector, Jenny his wife and children, Sarah, Tom and Jeremy, are leaving us and that the



## VILLAGE DIARY

### **July**

3rd Gardening Club  
4th Groby Community College Family Fun Day  
4th Ramblers  
18th - 20th Choral Society - Summer Celebration  
27th Parish Council Meeting  
28th Gardening Club Trip

### **August**

5th Bradgate Flower Club  
8th Ramblers  
18th All Saints Fellowship  
24th Parish Council Meeting  
31st Linford Gala Day

### **Regular events**

1st Sunday in the Month @11am Sunday School - next one September  
Sunday Evenings at the Linford - 7-10.30pm Lady Jane Grey Club for single people

## **ALL SAINT'S FELLOWSHIP AND WELCOME CLUB.**

My last contribution to the Parish Magazine appears to have caused some confusion, so here we go:- The Welcome Club is not closing for July and August, It remains open the whole year round every Thursday morning to welcome you all with tea, coffee, biscuits and friendship.

We come to the end of the Welcome Club Helpers rota on 25th June 2009. Hopefully we have informed all the ladies and gentlemen who have supplied and served their cakes and scones etc. and that, in future we ourselves will purchase and serve tea and biscuits to each other. In the last magazine I did in fact thank all the people who have looked after us so well during the past years.

There are no Fellowship meetings in July.

On 18<sup>th</sup> August at 2.30pm. Mrs. Anne Halsey is taking us on a trip to Egypt!. Anne is known to us as a very interesting speaker so please do attend and give her a warm welcome.

### RICHARD.

You must all be aware by now that Richard , our Team rector, Jenny his wife and children, Sarah, Tom and Jeremy, are leaving us and that the



big removal day is 18<sup>th</sup> June. We have spoken of it together as a Group and we are so sorry that we are to lose him. Richard has been with us through so many times when we have needed support and it has been forthcoming.

We must now support him and send him on his way with our love and Best Wishes.

**Kathleen**

### **URGENT – Junior Youth Club leader(s)**

#### **The Junior Youth Club requires a new leader or group of leaders if it is to continue in September**

The Youth Club was established by a group of parents after the Village Appraisal Report raised it as a desirable addition to the village, there being many interest groups and clubs for adults but very few for the younger members of the community

Senior and Junior Youth Club meet on the first Monday of the month during term time (about 10 meetings per year) in the Village Hall. Junior YC is from 6.00 to 7.15 and usually has around 15 children aged up to 10, those younger than 7 have parents stay for the session. The current format is to start with games followed by a craft activity and play on the equipment – table tennis, air hockey, table football and pool.

There is a very supportive Committee that meets about 3 times a year to organise dates and activities for future meetings and to coordinate volunteer helpers. We also have support from, and are affiliated to, Young People First (an umbrella body for voluntary youth groups in Leicestershire) and have Liability insurance in place.

It may be that a group of parents could share the leadership, either at all sessions or on a rota basis. There will be support and help for the new leader(s) and the format of the sessions is not set in stone but is open and flexible to new ideas and initiatives.

PLEASE think about this as it would be a real shame for the Junior section to disappear, but a new leader needs to be found.

If you cannot consider taking this on alone then maybe there are friends/parents you could do it with. Maybe there's someone you know who would be a good choice – please talk to them and us.

Please call Beverly Griffiths 242632 or Vicki Lightfoot 242445

# THE POST OFFICE TEA ROOMS NEWTOWN LINFORD

Downstairs Seating Now available  
Outside Seating Under Cover Now Extended



## Opening Times

Mon-Fri	10am -	4.30pm
Sat & Sun	9.30am-	4.30pm

# 01530 242709

550 Bradgate Road, Newtown Linford



## P WHITWORTH

Building Contractor

Established for 25 years



227 Markfield Lane,  
Newtown Linford,  
Leicestershire LE67 9PQ

High quality craftsmanship assured.  
From Planning to completion.  
Specialising in traditional materials.  
All work guaranteed, references available.  
For a free, no obligation consultation,  
telephone Peter Whitworth on:

# 07973 841 655

# THE POST OFFICE TEA ROOMS NEWTOWN LINFORD

Downstairs Seating Now available  
Outside Seating Under Cover Now Extended



## Opening Times

Mon-Fri	10am -	4.30pm
Sat & Sun	9.30am-	4.30pm

# 01530 242709

550 Bradgate Road, Newtown Linford



## P WHITWORTH

Building Contractor

Established for 25 years



227 Markfield Lane,  
Newtown Linford,  
Leicestershire LE67 9PQ

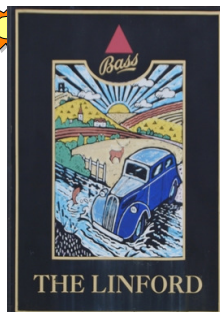
High quality craftsmanship assured.  
From Planning to completion.  
Specialising in traditional materials.  
All work guaranteed, references available.  
For a free, no obligation consultation,  
telephone Peter Whitworth on:

# 07973 841 655



**THE LINFORD GALA DAY**

**Bank Holiday Monday  
31<sup>st</sup> August 2009**



**Enter our Amateur Photographic Competition**

A chance show off your photographic skills, you can submit as many entries as you like in the following categories:-

**Newtown Linford Village scene**

- a) 13 years & under                      b) Any age

**Bradgate Park Scene**

- a) 13 years & under                      b) Any age

**Holiday Snaps**

Any age

**Pets & Animals**

- a) 13 years & under                      b) Any age

**Flowers**

- a) 13 years & under                      b) Any age

All photographs can be displayed in the function room of the Linford from 11.00 am till noon Entry Fee 25p per print, Children are free – All proceeds to charity.

Prizes & Certificates for the winners.

Entry forms available on the day

Judging will take place at prior to the show opening

**Tallest Sunflower Competition**

**Just grow your own sunflowers and register the size on the Linford notice board with contact details, judging will take place prior to the show.**

All details on the gala day are available in the Linford

**Gates Open 2.30 – 5.00pm**

# Roecliffe Landscaping

2 Roecliffe Road, Woodhouse Eaves, LE12 8TN  
Telephone 01509 890079

Mobile 07921 381902

Landscaping      Fencing  
Turfing            Hedge Cutting  
Grass Cutting    Jet Washing  
Weed Control     Planting  
Garden and General Maintenance  
Garden Waste Clearance

## Tree Surgery

- ◆ Felling
- ◆ Pruning
- ◆ Pollarding
- ◆ Dismantling
- ◆ Reductions



**FREE ESTIMATE**

Please call  
**Charles Tipper NPCT**  
Qualified  
N.D. Horticulture  
F.C.A Construction &  
Brickwork

**The Linford**  
August Bank Holiday Charity Fun Day

**TALLEST SUNFLOWER  
COMPETITION**

A colorful illustration of a tall sunflower in a tan pot. A small, smiling bee is flying to the right of the sunflower. The background is a light blue sky with a few clouds.

**MAKE THE BEES HAPPY BY  
ENTERING TODAY**

**ONLY 50P**

JUDGING WILL TAKE PLACE AT OUR AUGUST CHARITY FUN DAY

## Foot Problems ?

Corns, Calluses, Veruccae, Hard Skin, Nail Problems, Athlete's foot, Sore and Cracked Heels.

Have them treated  
Professionally in the comfort of  
your own home

Ring **Alistair Watt** MCFHP.MAFHP.  
**Foot Health Specialist**



Tel 01530 243009  
or 07802 777221

Evenings and weekends  
available

Service with a smile -





# Roecliffe Landscaping

2 Roecliffe Road, Woodhouse Eaves, LE12 8TN  
Telephone 01509 890079

Mobile 07921 381902

Landscaping      Fencing  
Turving            Hedge Cutting  
Grass Cutting     Jet Washing  
Weed Control      Planting  
Garden and General Maintenance  
Garden Waste Clearance

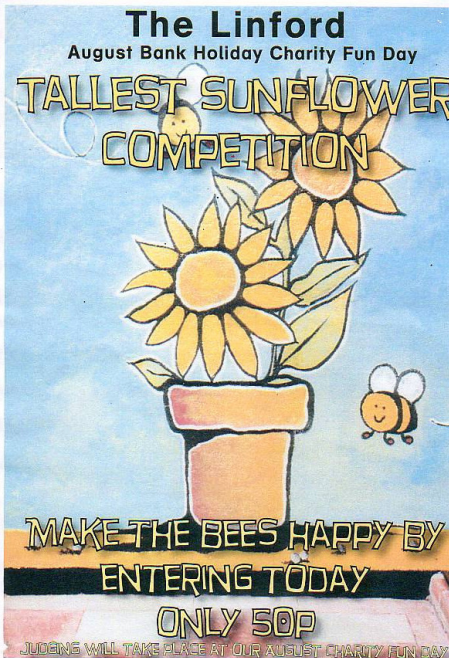
## Tree Surgery

- ◆ Felling
- ◆ Pruning
- ◆ Pollarding
- ◆ Dismantling
- ◆ Reductions



**FREE ESTIMATE**

Please call  
**Charles Tipper NPCT**  
Qualified  
N.D. Horticulture  
F.C.A Construction &  
Brickwork



## Foot Problems ?

Corns, Calluses, Veruccae, Hard Skin, Nail Problems, Athlete's foot, Sore and Cracked Heels.

Have them treated  
Professionally in the comfort of  
your own home

Ring **Alistair Watt** MCFHP.MAFHP.

**Foot Health Specialist**

Tel 01530 243009  
or 07802 777221

Evenings and weekends  
available

Service with a smile -







Reg no.  
12310

**Quality Builders**



**Bromac Builders**

Established for 25 years,  
with an excellent reputation for  
quality and reliability

**References available.**

**Herbie McDonnell**

**63 Main Street, Newtown Linford, Leics., LE6 0AE**

**Telephone / Fax: 01530 245318**

**Mobile: 07774 852529**

**Over 70 or On benefits?**

**You may be eligible for FREE LOFT INSULATION**

**If not, you may still be entitled to £150.00 off your loft insulation**

To find out more, contact:

**Herbie McDonnell**

Bromac Builders Ltd

63 Main Street

Newtown Linford

Leics LE6 0AE

**Tel. 01530 245318**

**Mobile: 07774 852529**



**Bromac Builders Ltd**

Established for 25 years

## **Newtown Ramblers 2009**

July 4<sup>th</sup>

Glenis & John

01530 242897

Meet 9.00am opposite the Village Hall. "Awayday, Derbyshire." Bring a packed lunch or eat in a cafe in Bakewell.

August 8<sup>th</sup> Meet 2.00pm. opposite the Village Hall, Leader Iris Sayer  
On June 13<sup>th</sup> -Thank-you to Carolyn & Peter Lowe for a walk along the Leics. Round from Thorpe Satchville to Burrough. We had superb views from the Burrough Hill Iron Age fort followed by lunch at the Stag & Hounds. We then enjoyed the local Garden Fete, before the return walk to our cars. The weather was lovely, so Jan invited us all back to enjoy a bring and share supper in her garden, where we saw the local King-fisher. Thanks Jan.

The day walk above to Derbyshire will be a circular from Chatsworth. We shall stop at Edensor for elevenses then to Bakewell for lunch, so you do not need to carry anything except a drink and water-proofs. Bakewell is an ancient market town and worth spending a while wandering around. Transport is in shared cars, hence the petrol cost to be paid for by the passengers (£5 each). The distance is 7-8 miles. If any one would like a shorter walk, they can travel with us to Edensor, then remain in Chatsworth where there is lots to see.

New members are always welcome. All you need is a pair of walking shoes or boots.

Dogs are welcome only under the supervision of the owner, and to be on the lead where there is livestock or nesting birds. Please check with the walk leader that dogs are allowed across any access land.

Any queries, please ring Glenis Meredith, Tel.01530 242897.

Disclaimer. Members are reminded that participation in walks is at their own risk, and that the leader(s) accepts no liability for any loss or injury, however caused.

### **Thank you to Anne and David Couling**

The Newtown Linford Village Magazine committee and distributors had a lovely social evening at Anne and David's house.

I am sure I can speak for us all when I say thank you for their hospitality, the use of their lovely home and garden and to Anne for catering so well for us all.

We generally have a social evening once a year to say thank you to all the volunteers who assist with our Village's Magazine from producing it to delivering it to you. This was our first summer event which was a very enjoyable occasion

**Carole Heubeck, Editor**

## **Newtown Ramblers 2009**

July 4<sup>th</sup>

Glenis & John

01530 242897

Meet 9.00am opposite the Village Hall. "Awayday, Derbyshire." Bring a packed lunch or eat in a cafe in Bakewell.

August 8<sup>th</sup> Meet 2.00pm. opposite the Village Hall, Leader Iris Sayer  
On June 13<sup>th</sup> -Thank-you to Carolyn & Peter Lowe for a walk along the Leics. Round from Thorpe Satchville to Burrough. We had superb views from the Burrough Hill Iron Age fort followed by lunch at the Stag & Hounds. We then enjoyed the local Garden Fete, before the return walk to our cars. The weather was lovely, so Jan invited us all back to enjoy a bring and share supper in her garden, where we saw the local King-fisher. Thanks Jan.

The day walk above to Derbyshire will be a circular from Chatsworth. We shall stop at Edensor for elevenses then to Bakewell for lunch, so you do not need to carry anything except a drink and water-proofs. Bakewell is an ancient market town and worth spending a while wandering around. Transport is in shared cars, hence the petrol cost to be paid for by the passengers (£5 each). The distance is 7-8 miles. If any one would like a shorter walk, they can travel with us to Edensor, then remain in Chatsworth where there is lots to see.

New members are always welcome. All you need is a pair of walking shoes or boots.

Dogs are welcome only under the supervision of the owner, and to be on the lead where there is livestock or nesting birds. Please check with the walk leader that dogs are allowed across any access land.

Any queries, please ring Glenis Meredith, Tel.01530 242897.

Disclaimer. Members are reminded that participation in walks is at their own risk, and that the leader(s) accepts no liability for any loss or injury, however caused.

## **Thank you to Anne and David Couling**

The Newtown Linford Village Magazine committee and distributors had a lovely social evening at Anne and David's house.

I am sure I can speak for us all when I say thank you for their hospitality, the use of their lovely home and garden and to Anne for catering so well for us all.

We generally have a social evening once a year to say thank you to all the volunteers who assist with our Village's Magazine from producing it to delivering it to you. This was our first summer event which was a very

11 enjoyable occasion

**Carole Heubeck, Editor**



**WORRY - DEPRESSION - ANXIETY - ANGER - OCD - PTSD**

## **COGNITIVE BEHAVIOURAL THERAPY**

A COST EFFECTIVE THERAPY  
BASED ON EVIDENCE OF WHAT ACTUALLY WORKS.

cbttherapist.co.uk  
Tel : 0845 4178044

**Dr Gerry Kearns B.Sc.(hons), Pg.Cert, Pg.Dip, M.A, M.Phil, Ph.D**

**PANIC - PHOBIA - CFS - SUBSTANCE MISUSE - PAIN - IBS**

*Glebe Von Wood*  
*Encouraging Happy, Healthy Pets*

### **Doggy Day Care**

Socialisation in groups of 2-5, 3 times a day

### **Personality Assessments**

With our on site Trainer Anne Bull from AMK9

### **Agility Training**

Wednesday Evening 7.00-8.00pm  
£5.00 per session

### **Opening Hours**

Mon - Fri 9 - 10.30am & 4 - 5.30pm  
Sat - Sun 9 - 10.30am & 2 - 3.30pm

Tel: 01530 813145 Mob: 07970 104756  
Glebe Farm Green Lane Whitwick Leicestershire LE67 5EE  
e-mail: glebevonwood@glebeservices.com www.glebevonwood.co.uk



**NEWTOWN  
LINFORD  
VILLAGE HALL**

**Senior's  
Christmas  
Lunch.**

The date for this will  
be

**THURSDAY  
10th DECEMBER.**

Please make a note  
in your diaries



## **BRADGATE FLOWER CLUB**

It is wonderful to report that the Flower Festival in the Church was a huge success. Everybody worked really hard to make it such a great event. Our final figure after all expenses was £1700 which will be divided equally between our charity, Air Ambulance, and the chosen charity of the Church, which is Monte Azul, to help street children in Brazil.

A very big thank you to all who were involved, not only the flower arrangers but the musicians and soloists on the preview evening, all the ladies who organised refreshments on Saturday and Monday as well as the wine and cheese on Friday evening, the plant stall on Saturday and the stewards who gave their time to greet the many visitors over the weekend.

Our members are now looking forward to their outing to Hidcote Manor Gardens on 17<sup>th</sup> June, so we are hoping for some fine and warm weather.

A reminder that we do not have a meeting in July so our next meeting will be on

**Wednesday 5<sup>th</sup> August**  
**Barbara Smith**  
**SEASONAL DELIGHTS**  
**At the Village Hall at 7.30 pm**

Sue Howard

01530 245373

**Newtown Linford Choral Society**

### **MUSIC QUIZ**



**7pm for 7.30pm**  
**Saturday, 5th September**

Newtown Linford Village Hall

Tickets £8

Supper & Bar

Ring Phil Matthews 0116 267 6717





## **BRADGATE FLOWER CLUB**

It is wonderful to report that the Flower Festival in the Church was a huge success. Everybody worked really hard to make it such a great event. Our final figure after all expenses was £1700 which will be divided equally between our charity, Air Ambulance, and the chosen charity of the Church, which is Monte Azul, to help street children in Brazil.

A very big thank you to all who were involved, not only the flower arrangers but the musicians and soloists on the preview evening, all the ladies who organised refreshments on Saturday and Monday as well as the wine and cheese on Friday evening, the plant stall on Saturday and the stewards who gave their time to greet the many visitors over the weekend.

Our members are now looking forward to their outing to Hidcote Manor Gardens on 17<sup>th</sup> June, so we are hoping for some fine and warm weather.

A reminder that we do not have a meeting in July so our next meeting will be on

**Wednesday 5<sup>th</sup> August**  
**Barbara Smith**  
**SEASONAL DELIGHTS**  
**At the Village Hall at 7.30 pm**

Sue Howard      01530 245373

**Newtown Linford Choral Society**

### **MUSIC QUIZ**

**7pm for 7.30pm**  
**Saturday, 5th September**

Newtown Linford Village Hall

Tickets £8

Supper & Bar

Ring Phil Matthews 0116 267 6717





# KEITH SMITH (ANSTEY) LTD

6 STADON ROAD ANSTEY LE7 7AY - SALES RENTAL & SERVICE  
 TEL: 0116 2362395 - sales@keithsmithltd.co.uk



## FAST FREE LOCAL DELIVERY



### INDESIT

#### IS70C

Condenser Tumble Dryer

- ❑ 7Kg Load Capacity
- ❑ 2 Temperatures
- ❑ 3 Programmes
- ❑ Reverse Tumble

WAS £249.99 Save £24.89  
**NOW £225.10**



### ZANUSSI

#### ZWF12070W

Washing Machine

- ❑ 1200rpm Spin Speed
- ❑ 6Kg Load Capacity
- ❑ Time Delay
- ❑ 15 Progs
- ❑ AAB Rated

WAS £299.99 Save £35.74  
**NOW £264.25**



### INDESIT

#### WIXL143

Washing Machine

- ❑ 1400rpm Spin Speed
- ❑ 6Kg Load Capacity
- ❑ Daily Wash
- ❑ AAB Rated

SCOOP Purchase  
**NOW £274.03**



### HOTPOINT

#### WML540P

Washing Machine

- ❑ 1400rpm Spin Speed
- ❑ 6Kg Load Capacity
- ❑ Mini Load
- ❑ AAB Rated
- ❑ **5 Year Parts Guarantee**

WAS £319.99 Save £36.17  
**NOW £283.82**



### HOTPOINT

#### FDL570P

Dishwasher

- ❑ 12 Place Settings
- ❑ 7 Programmes
- ❑ AAA Rated
- ❑ Time Delay
- ❑ Fast Wash

WAS £329.99 Save £36.38  
**NOW £293.61**



### ZANUSSI

#### ZWF14070W1

Washing Machine

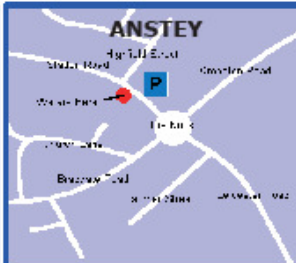
- ❑ 1400rpm Spin Speed
- ❑ 6Kg Load Capacity
- ❑ Time Delay
- ❑ 15 Progs
- ❑ AAB Rated

WAS £329.99 Save £46.17  
**NOW £283.82**

*All products are in stock and available for immediate Delivery*  
**Internet Prices With Personal Service**  
 Ask about our **Price Match Promise**  
**New Built-in Display**  
 Lots of other offers **in-store now!**

NEW VAT SAVINGS IN-STORE  
**Fast Free Local Delivery**

Free Installation (worth £29.99)\*  
 Free Removal of Old Machine (worth £14.00)\*\*  
 Free Removal of Packaging  
 \*To Existing Fittings. \*\*Excludes Refrigeration



**SCARECROW & VILLAGE FESTIVAL  
SATURDAY 26th & SUNDAY 27th SEPTEMBER.**

**Scarecrows**

**Harvest Festival, Bell tower Event**

**Scarecrow Teas, Village Design Statement Exhibition  
Art/Photographs Old and New, Village Record and DVD  
Live Music**

Entry forms will be available at the Post Office from 1<sup>st</sup> September (our thanks to Sharon and Tony) for a Festival which we hope will be even more successful than last year. As usual there will be 4 classes and a "People's Choice" of Scarecrow. There is no theme and absolutely no age limit, so let your imagination run riot and have fun. Prizes will be presented by Councillor David Snartt at 4pm in the Village Hall on Sunday 27<sup>th</sup>.

As well as the Scarecrows all around the Village, it will be Harvest Festival time in our beautiful Church. The bell ringers will be holding a special event in the Bell tower.

Scarecrow Teas will also be available on both days (Saturday at School and Sunday in the Village Hall). Also on Sunday in the Village Hall there will be a Display of Paintings, Village Design Statement Exhibition, cards, etc (all local organisations). We will also have some old village photographs, and the Village DVD, which includes film from 1955, will be on sale. There will also be live music on Sunday afternoon, when the barbershop quartet "Retro" will be singing at various points around the Village. Look out for the Vintage Cycle Club "The Desford Pedallers"

Please phone me on 243822 if your Village Organisation would like to have a stall in the Village Hall in the afternoon of Sunday 28<sup>th</sup> September

For the timing of all these events please check the Scarecrow Programme which will be available over the Festival Weekend

What will my Scarecrow be this year.....?

**Iris Sayer**



**SCARECROW & VILLAGE FESTIVAL**  
**SATURDAY 26th & SUNDAY 27th SEPTEMBER.**

**Scarecrows**

**Harvest Festival, Bell tower Event**

**Scarecrow Teas, Village Design Statement Exhibition**  
**Art/Photographs Old and New, Village Record and DVD**  
**Live Music**

Entry forms will be available at the Post Office from 1<sup>st</sup> September (our thanks to Sharon and Tony) for a Festival which we hope will be even more successful than last year. As usual there will be 4 classes and a "People's Choice" of Scarecrow. There is no theme and absolutely no age limit, so let your imagination run riot and have fun. Prizes will be presented by Councillor David Snartt at 4pm in the Village Hall on Sunday 27<sup>th</sup>.

As well as the Scarecrows all around the Village, it will be Harvest Festival time in our beautiful Church. The bell ringers will be holding a special event in the Bell tower.

Scarecrow Teas will also be available on both days (Saturday at School and Sunday in the Village Hall). Also on Sunday in the Village Hall there will be a Display of Paintings, Village Design Statement Exhibition, cards, etc (all local organisations). We will also have some old village photographs, and the Village DVD, which includes film from 1955, will be on sale. There will also be live music on Sunday afternoon, when the barbershop quartet "Retro" will be singing at various points around the Village. Look out for the Vintage Cycle Club "The Desford Pedallers"

Please phone me on 243822 if your Village Organisation would like to have a stall in the Village Hall in the afternoon of Sunday 28<sup>th</sup> September

For the timing of all these events please check the Scarecrow Programme which will be available over the Festival Weekend

What will my Scarecrow be this year.....?

**Iris Sayer**





**Groby Community College  
Community Family Fun Day**

**Saturday 4th July 2009 1-5pm.**

In partnership with the local Beat Police Officers a day of fun for all the family is planned to take place at Groby Community College, to include Skate/BMX ramp, penalty shoot out, youth service bus, mini hockey tournament, hog roast, dog display, stalls, raffle, dance displays, refreshments plus much, much more.....

Ticket requests will be available through schools from w/c 1st June 2009.  
Family tickets £5.00, Adults £2.00,  
Children concessions £1.00.

If you would like to have a stall at the event please contact  
Helene Chadwick on 0116 281 7017.  
Stall charges are £20.00.

**All proceeds to go towards building a new Dance Studio for community use.**

**SAFARI SUPPER 8th May 2009**

80 people joined the Village Hall Committee on their Safari Supper. The atmosphere was fabulous with everyone not sure who they were entertaining or who they were being entertained by! Many thanks to all our Hosts who kindly agreed to cook either Dinner or Dessert, only very good comments have been relayed back

Recent/New Villagers came along and really enjoyed meet new faces or getting to know others better. We also had some returning villagers who came back for the event

Looking forward to next year in the hope that all the Village will be involved young and old!

**The Village Hall Social  
Committee**





# THE LINFORD

*"Your village local!"*

**FUNCTION ROOM AVAILABLE FOR FAMILY CELEBRATIONS**

*New "Song Club" coming soon  
and don't miss our "Quiz Night"  
Weds 8:30pm*

**Main Street Newtown Linford  
Tel: 01530 244012 after 6pm**

## Paint Wizard

Proprietor Paul Beaver, Grey Crescent, Newtown Linford

**Working for You—All types of smart repairs including:**

**Panel Resprays from £130**

**Bumper Corner Repairs from £55**

**Colour Restoration From £55**

**Alloy Wheel Refurbishment from £45**

Polished \* Painted \* Colour coded \* Chrome

**New wheels & tyres supplied**

**At competitive prices**

**Free Collection & Delivery Service Available**

**All prices are plus VAT charged at the prevailing rate**

**0116 253 7371 or 07850 456696**

**Unit 10, Raithby Lawrence Yard, Slater Street, Leicester, LE3 5AS**





# THE LINFORD

*"Your village local!"*

**FUNCTION ROOM AVAILABLE FOR FAMILY CELEBRATIONS**

***New "Song Club" coming soon  
and don't miss our "Quiz Night"  
Weds 8:30pm***

**Main Street Newtown Linford  
Tel: 01530 244012 after 6pm**

## Paint Wizard

Proprietor Paul Beaver, Grey Crescent, Newtown Linford

**Working for You—All types of smart repairs including:**

**Panel Resprays from £130**

**Bumper Corner Repairs from £55**

**Colour Restoration From £55**

**Alloy Wheel Refurbishment from £45**

Polished \* Painted \* Colour coded \* Chrome

**New wheels & tyres supplied**

**At competitive prices**

**Free Collection & Delivery Service Available**

**All prices are plus VAT charged at the prevailing rate**

**0116 253 7371 or 07850 456696**

**Unit 10, Raithby Lawrence Yard, Slater Street, Leicester, LE3 5AS**





Tel: 0116 234 0700

A showroom  
full of ideas  
for living and giving



Plus  
Luxury Coffee Lounge  
serving homemade soup, cakes  
and lunches prepared daily

**BROUGHTONS INTERIORS**

75 CROPSTON ROAD  
ANSTEY, LEICESTERSHIRE

[www.broughtonsinteriors.co.uk](http://www.broughtonsinteriors.co.uk)



Hassle Free Shopping with Customer Car Park! OPEN Mon-Sat 9am-5pm Sunday 10am-4pm

# Broughtons

*an Aladdin's Cave of Period Lighting  
and Restoration Hardware*



*Doors & Floors  
Fireplaces, Radiators & Stoves  
Lighting, Switches & Sockets  
Handles, Knobs & Knockers*

THE OLD CINEMA, CROPSTON ROAD, ANSTEY, 0116 234 1888 [www.broughtons.com](http://www.broughtons.com)

**BRADGATE FLOWER CLUB FLOWER FESTIVAL**  
**22nd May—25th May 2009**  
**“Classics Old & New”**



**BRADGATE FLOWER CLUB FLOWER FESTIVAL**  
**22nd May—25th May 2009**  
**“Classics Old & New”**







The photos over the following pages can not do justice to all the fabulous displays that were in the church to celebrate the 20th anniversary of the Bradgate Flower Club & the 50th anniversary of the National Association of Flower Arranging Societies. we could not show them all but hope you enjoy the ones we are able to show.













Visitors enjoying the fantastic displays in the church.





John and Eve Bowtell welcome all to

# The Bradgate



— Main Street, Newtown Linford —

Opening hours

Mon - Thurs 11.30 - 3pm & 5.30 - 11pm

Friday Saturday (food served all day) 11.30 - 11pm

Sunday 12 noon - 9.30pm

**Don't forget Dad  
Book now for Fathers Day - 21st June  
& Dad will get a free dessert !**

## Daily Specials



## Steak Night

Wednesday Night  
2 steaks and  
a free bottle of wine  
for £16.95



**Credit Crunch Lunch**—Monday to Friday from £6.95  
served Noon - 2.30

**Carvery**—every Sunday from Midday till 6pm £8.95

*Roast Loin of Pork & all the trimmings*

*Roast Topside of Beef,*

*Roast Turkey,*

*Veggie Option*

**Now Serving Food  
Sunday Night  
6—8pm**

**Telephone  
01530 242239**

John and Eve Bowtell welcome all to

# The Bradgate

— Main Street, Newtown Linford —

Opening hours

Mon - Thurs 11.30 - 3pm & 5.30 - 11pm

Friday Saturday (food served all day) 11.30 - 11pm

Sunday 12 noon - 9.30pm

**Don't forget Dad  
Book now for Fathers Day - 21st June  
& Dad will get a free dessert !**

## Daily Specials

# Steak Night

Wednesday Night  
2 steaks and  
a free bottle of wine  
for £16.95



**Credit Crunch Lunch**—Monday to Friday from £6.95  
served Noon - 2.30

**Carvery**—every Sunday from Midday till 6pm £8.95

*Roast Loin of Pork & all the trimmings*

*Roast Topside of Beef,*

*Roast Turkey,*

*Veggie Option*

**Now Serving Food  
Sunday Night  
6—8pm**

**Telephone**

**01530 242239**



## Bradgate Team Sunday Services July 2009

Date	Groby	Ratby	Newtown Linford
5 <sup>th</sup> July	8.00am Holy Communion		
	9.30am Family Service	10.00am Worship for All	11.00am Family Communion
	6.30pm Holy Communion	6.00pm Holy Communion	
12 <sup>th</sup> July		8.00am Holy Communion	8.00am Holy Communion
	9.30am Holy Communion	10.00am All-age Communion	11.00am Morning Prayer
	6.30pm Evening Service		
19 <sup>th</sup> July	8.00am Holy Communion		
	Team Parish	10.30am Service at Groby and	<i>at picnic at Bradgate</i>
	6.30pm 3SE		
26 <sup>th</sup> July			8.00am Holy Communion
	9.30am Holy Communion	10.00am All-age Communion	11.00am Morning Prayer
	6.30pm Evening Prayer		

### Midweek Communion Services

Groby—Wednesdays at 9.30am

Newtown—Thursdays monthly at 10am: 9<sup>th</sup> July

<sup>24</sup> Ratby -Alternate Thursdays at 9.30am: 2<sup>nd</sup> 16<sup>th</sup> & 30<sup>th</sup> July



## Bradgate Team Sunday Services August 2009

Date	Groby	Ratby	Newtown Linford
2 <sup>nd</sup> August	8.00am Holy Communion		
	9.30am Family Service	10.00am 'Worship for All'	11.00am Family Communion
	6.30pm Holy Communion	6.00pm Holy Communion	
9 <sup>th</sup> August		8.00am Holy Communion	8.00am Holy Communion
	9.30am Holy Communion	10.00am Morning Worship	11.00am Family Service
	6.30pm Evening Service		
16 <sup>th</sup> August	8.00am Holy Communion		
	9.30am Morning Worship	10.00am All-age Communion	11.00am Holy Communion
	6.30pm Holy Communion		
23 <sup>rd</sup> August			8.00am Holy Communion
	9.30am Holy Communion	10.00am All-age Communion	11.00am Morning Prayer
	6.30pm Evening Prayer		
30 <sup>th</sup> August	8.00am Holy Communion		
	9.30am Holy Communion	10.00am Morning Worship	11.00am Morning Prayer
	6.30pm Evening Prayer		

### Midweek Communion Services

Groby

Wednesdays at 9.30am

Newtown

Thursdays monthly at 10am: 6<sup>th</sup> August

Ratby

Alternate Thursdays at 9.30am: 13<sup>th</sup> & 27<sup>th</sup> Aug



## Bradgate Team Sunday Services August 2009

<b>Date</b>	<b>Groby</b>	<b>Ratby</b>	<b>Newtown Linford</b>
2 <sup>nd</sup> August	8.00am Holy Communion		
	9.30am Family Service	10.00am 'Worship for All'	11.00am Family Communion
	6.30pm Holy Communion	6.00pm Holy Communion	
9 <sup>th</sup> August		8.00am Holy Communion	8.00am Holy Communion
	9.30am Holy Communion	10.00am Morning Worship	11.00am Family Service
	6.30pm Evening Service		
16 <sup>th</sup> August	8.00am Holy Communion		
	9.30am Morning Worship	10.00am All-age Communion	11.00am Holy Communion
	6.30pm Holy Communion		
23 <sup>rd</sup> August			8.00am Holy Communion
	9.30am Holy Communion	10.00am All-age Communion	11.00am Morning Prayer
	6.30pm Evening Prayer		
30 <sup>th</sup> August	8.00am Holy Communion		
	9.30am Holy Communion	10.00am Morning Worship	11.00am Morning Prayer
	6.30pm Evening Prayer		

### Midweek Communion Services

Groby                      Wednesdays at 9.30am  
 Newtown                Thursdays monthly at 10am: 6<sup>th</sup> August  
 Ratby                      Alternate Thursdays at 9.30am: 13<sup>th</sup> & 27<sup>th</sup> Aug



## Church Services and Events for July and August

### Sunday 5<sup>th</sup> July – 4<sup>th</sup> after Trinity

8.00am Holy Communion at Groby

Peter Folks

11.00am Family Communion

Peter Sheridan

### Sunday 12<sup>th</sup> July – 5<sup>th</sup> after Trinity

8.00am Holy Communion

Canon Derek Buxton

11.00am Morning Prayer

Brian Hughes

### Sunday 19<sup>th</sup> July – 6<sup>th</sup> after Trinity

8.00am Holy Communion at Groby

Peter Folks

**10.30am Team Parish Service at Groby**

Team Readers

*followed by picnic in Bradgate Park*

### Sunday 26<sup>th</sup> July – 7<sup>th</sup> after Trinity

8.00am Holy Communion

Peter Folks

11.00am Morning Prayer

Mike Smith

### Sunday 2<sup>nd</sup> August – 8<sup>th</sup> after Trinity

8.00am Holy Communion at Groby

Louise Corke

11.00am Family Communion with baptism

John Woolmer

### Sunday 9<sup>th</sup> August – 9<sup>th</sup> after Trinity

8.00am Holy Communion

Canon Derek Buxton

11.00am Family Service

Louise Corke

### Sunday 16<sup>th</sup> August – 10<sup>th</sup> after Trinity

8.00am Holy Communion at Groby

Louise Corke

11.00am Holy Communion

Anne Stratton

### Sunday 23<sup>rd</sup> August – 11<sup>th</sup> after Trinity

8.00am Holy Communion

Louise Corke

11.00am Morning Prayer

Keith Wignall and Geoff Kirkham

### Sunday 30<sup>th</sup> August – 12<sup>th</sup> after Trinity

8.00am Holy Communion at Groby

Anne Stratton

11.00am Morning Prayer

John Woolmer

### ***Thursday Communions in July and August***

Thursday 9<sup>th</sup> July

10.00am

John Sharpe

Thursday 6<sup>th</sup> August

10.00am

Louise Corke

### **Focus Prayer Times in July and August**

Tuesdays at **10.00am** (*Please note later starting time*) in Church on 14<sup>th</sup>, 28<sup>th</sup> July and 11<sup>th</sup> and 25<sup>th</sup> August

**For enquiries over the next few weeks**

*(until August 1<sup>st</sup>)*

*for weddings & baptisms contact*

*Revd Anne Stratton*

*0777 307 6555*

*for funeral arrangements, contact*

*Keith Wignall 0116 231 1439*

*other enquiries, contact Alan Iliffe*

*01530 242101*

*(from 1<sup>st</sup> August)*

*contact the Team Vicar, Revd*

*Louise Corke 0116 231 3090*

[words.th@talktalk.net](mailto:words.th@talktalk.net)

## Curtains & Blinds By Amanda



*Made to measure  
Curtains & Blinds*

**Tel 07968 257234**



**For enquiries over the next few weeks**

*(until August 1<sup>st</sup>)*

*for weddings & baptisms contact*

*Revd Anne Stratton*

*0777 307 6555*

*for funeral arrangements, contact*

*Keith Wignall 0116 231 1439*

*other enquiries, contact Alan Iliffe*

*01530 242101*

*(from 1<sup>st</sup> August)*

*contact the Team Vicar, Revd*

*Louise Corke 0116 231 3090*

[words.th@talktalk.net](mailto:words.th@talktalk.net)

**Curtains & Blinds**

***By Amanda***



***Made to measure  
Curtains & Blinds***

***Tel 07968 257234***



















# Mark Chadwick



---

P~L~A~S~T~E~R~E~R

---

High quality plasterer with 25 years experience  
Competitive rates. All jobs considered.

**For a free quote:-**

**Telephone: 0116 2861057/Mobile: 07971 978 098**

**Email: [markchadwick@hotmail.co.uk](mailto:markchadwick@hotmail.co.uk)**



**THE VILLAGE**  
restaurant

Visit the VILLAGE Restaurant for Brunch  
Available Saturdays between 11am – 3pm

Spend time enjoying the Newspapers – find the good news there  
must be some somewhere

Forget the city centre with its expensive car parking

May we tempt your taste buds to:-

American Pancakes, Bananas & Toffee Sauce or with Vanilla Ice  
Cream & Hot Chocolate Sauce £4.95

Smoked Salmon & Scrambled Egg on Toast £6.95

Minute Steak, Sauté Mushrooms, Sauté Potatoes £9.95

**The Village Restaurant**

**544, Bradgate Road, Newtown Linford, LE6 0HB**

**Tel 01530 245801**

**Alternatively you are more than welcome to pop in and pick  
up one of our menus**

# Mark Chadwick



---

P~L~A~S~T~E~R~E~R

---

High quality plasterer with 25 years experience  
Competitive rates. All jobs considered.

**For a free quote:-**

**Telephone: 0116 2861057/Mobile: 07971 978 098**

**Email: markchadwick@hotmail.co.uk**



**THE VILLAGE**  
restaurant

Visit the VILLAGE Restaurant for Brunch  
Available Saturdays between 11am – 3pm

Spend time enjoying the Newspapers – find the good news there  
must be some somewhere

Forget the city centre with its expensive car parking

May we tempt your taste buds to:-

American Pancakes, Bananas & Toffee Sauce or with Vanilla Ice  
Cream & Hot Chocolate Sauce £4.95

Smoked Salmon & Scrambled Egg on Toast £6.95

Minute Steak, Sauté Mushrooms, Sauté Potatoes £9.95

**The Village Restaurant**

**544, Bradgate Road, Newtown Linford, LE6 0HB**

**Tel 01530 245801**

**Alternatively you are more than welcome to pop in and pick  
up one of our menus**



## From The Records

In September 1986 The Old John Tower in Bradgate Park was 200 years old. It was originally built as a folly in 1784 on the site of the old windmill.

The legend goes back to the twenty first birthday celebrations on 31st October 1786 of the sixth Earl of Stamford when a falling pole from a bonfire accidentally killed an old retainer John.

The crenulated tower was subsequently named in his memory. The "handle" buttress was added to give the tower a tankard shape. John loved his ale.

The 200 year celebrations included opening the tower to the public and flood-lighting it in the evening.

On the anniversary day there was a turnout of ponies and traps which drove through the park to the tower as would have been done in the 1800's

32 bringing the ladies



to view the horse racing below. After they had assembled near the tower for the traditional stirrup cup, they were presented with a commemorative souvenir (has anyone still got one?). The following Saturday a commemorative horse ride took place on the 1 1/2 mile old race course around the tower. Those taking part included local jockeys in racing silks and members of the Quorn Hunt branch of the Pony Club. Photographs in the records show local brownies linking hands around the Tower when they sang happy Birthday to celebrate the 200th anniversary.

### **Janet Neaverson**

**Bradgate Drama Group** will be holding Auditions for their Pantomime on Tuesday Sept, 8th at 7.30 in the Village Hall Newtown Linford. The production dates will be Dec 3,4,5, 2009. Everybody is welcome its fun, Oh.....yes it is. If you require any further information please ring Peter Upton 01530 249257.or 07703303785



**CURTAINS, BLINDS AND  
SOFT FURNISHINGS**

*by Joanne Sjoberg*

*For a personal design, measuring and  
make-up service call*

**07870 111222**

The Croft, Leicester Lane, Desford, Leicestershire LE9 9JJ



to view the horse racing below. After they had assembled near the tower for the traditional stirrup cup, they were presented with a commemorative souvenir (has anyone still got one?). The following Saturday a commemorative horse ride took place on the 1 1/2 mile old race course around the tower. Those taking part included local jockeys in racing silks and members of the Quorn Hunt branch of the Pony Club. Photographs in the records show local brownies linking hands around the Tower when they sang happy Birthday to celebrate the 200th anniversary.

### **Janet Neaverson**

**Bradgate Drama Group** will be holding Auditions for their Pantomime on Tuesday Sept, 8th at 7.30 in the Village Hall Newtown Linford. The production dates will be Dec 3,4,5, 2009. Everybody is welcome its fun, Oh.....yes it is. If you require any further information please ring Peter Upton 01530 249257.or 07703303785

**JS**

**CURTAINS, BLINDS AND  
SOFT FURNISHINGS**

*by Joanne Sjoberg*

*For a personal design, measuring and  
make-up service call*

**07870 111222**

The Croft, Leicester Lane, Desford, Leicestershire LE9 9JJ



the new place to wine,  
dine or just spend time

*Enjoy the exquisite settings,  
sumptuous food and fabulous range of  
fine wines, champagnes, spirits & beers  
at The Grey Lady Restaurant & Bar*



For Reservations Call:  
01530 243558

**GREY LADY**  
drink ♦ dine ♦ divine

Sharpley Hill, Newtown Linford, Leicestershire. LE8 0AH

### **French Connection for Newtown Linford and Groby**

There was a celebration of all things French at Newtown Linford County Primary School on June 8<sup>th</sup>, aided by the pupils of Groby Community College. Pupils and staff from Groby visited Newtown Linford and after a typical French breakfast of croissants and pain au chocolat, children from both schools spent the day participating in a range of games and activities aimed at enhancing their understanding of France and the French language.

The older students from Groby relished the opportunity of being teachers for a day and showing their off their language skills whilst the younger

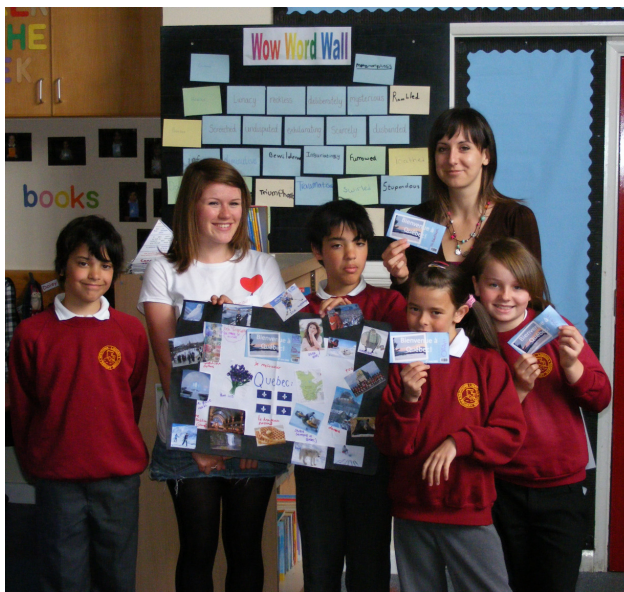
children from Newtown Linford were thrilled to be taught by teenagers and have such a stimulating and fun day of learning. Viv Evans, Assistant Principal at Groby Community College said "We were delighted to have a chance to work in partnership with such an enthusiastic primary School in Newtown Linford. The School is striving very hard to inspire its children with fun and challenging activities and I think that both Schools will have benefited greatly from a fantastic day.

Acting Headteacher in Newtown Linford, Lucy O'Connell, said: This was an ideal partnership as Groby Community College is a specialist Language College whilst Newtown Linford Primary School has an International Schools Award at Foundation and Intermediate levels. We think it's very important for even the youngest child to see the benefits of learning foreign languages and having such a fun day will help enormously."



children from Newtown Linford were thrilled to be taught by teenagers and have such a stimulating and fun day of learning. Viv Evans, Assistant Principal at Groby Community College said “We were delighted to have a chance to work in partnership with such an enthusiastic primary School in Newtown Linford. The School is striving very hard to inspire its children with fun and challenging activities and I think that both Schools will have benefited greatly from a fantastic day.

Acting Headteacher in Newtown Linford, Lucy O’Connell, said: This was an ideal partnership as Groby Community College is a specialist Language College whilst Newtown Linford Primary School has an International Schools Award at Foundation and Intermediate levels. We think it’s very important for even the youngest child to see the benefits of learning foreign languages and  
35 having such a fun day will help enormously.”





## **Newtown Linford Primary School**

The School has just bought some raised beds so they can plant vegetables but need some good topsoil to fill them with.

If you can help please contact the school.

## **Newtown Linford Gardening Club**

We had a splendid talk from Brian Fearn of Abbey Brooke Cactus Nursery at Matlock at our meeting in May. He brought along some of his remarkable collection of cacti and told us all kinds of things about these seemingly unassuming plants.

Our plant stall at the Flower Festival was a great success. We had plenty of plants brought in for sale and we were able to contribute to the charities which were supported by the event.

In July, we traditionally go on a trip. This year it is to Coton Manor Hall in Northamptonshire on Tuesday 28<sup>th</sup> July. We will leave in time to arrive for lunch at the cafeteria and then see the extensive gardens. There are a few places left on the bus and we will welcome non-members who would like to join us. Please ring Pam McMorran on 242140 if you are interested.

In August we are holding a social evening at the home of the Secretary and Treasurer. There will be a plant stall for swap or purchase plus other things to entertain and, of course, food and drink in plenty.

We have had several new members join us over the last year and we are always pleased to welcome more. If you wish to become a member, please contact the Secretary (tel. 242452), or come to one of our meetings to see how you like it before making a commitment (£2 for visitors).

Anne and David Couling

## **Sunday School**

**Our next Sunday Special will be on**

**Sunday 6th September between 11am and 12 noon**

**Come along and join us for Arts and Crafts, Games, drinks, biscuits decorating, Bible stories, prayers and fun!**

**Everyone welcome**

**Contact Katherine on 244790 for more details.**

241 Main Street  
Stanton Under  
Bardon  
Nr Markfield

**P.W.YEOMANS**



## PAINTERS AND DECORATORS

Established Since 1973

**Tel: 01530 249336    Mobile 07885 442899**

A Father and Son team working together to give you the best professional and quality service that you would expect, covering all aspects of the decorating trade.

Call on the above number where we can arrange a time that is convenient to you to discuss your decorating requirements, offer advice if needed and give you an estimate.



# PEST CONTROL

**DOMESTIC • COMMERCIAL • INDUSTRIAL**



**Guaranteed Service  
No Add On Charges**

**Wasps • Bees • Fleas • Ants  
Rodents • Bird Control • Fly Killers  
Fly Screens • Products / Services**

**FOR A FAST, RELIABLE RESPONSE**

**CALL FREE ON**

**0800 031 9388**

**target**  
creating a pest-free environment

[www.targetpestcontrol.co.uk](http://www.targetpestcontrol.co.uk) | [info@targetpestcontrol.co.uk](mailto:info@targetpestcontrol.co.uk)



241 Main Street  
Stanton Under  
Bardon  
Nr Markfield

**P.W.YEOMANS**



## PAINTERS AND DECORATORS

Established Since 1973

**Tel: 01530 249336    Mobile 07885 442899**

A Father and Son team working together to give you the best professional and quality service that you would expect, covering all aspects of the decorating trade.

Call on the above number where we can arrange a time that is convenient to you to discuss your decorating requirements, offer advice if needed and give you an estimate.



## PEST CONTROL

**DOMESTIC • COMMERCIAL • INDUSTRIAL**



**Guaranteed Service  
No Add On Charges**

**Wasps • Bees • Fleas • Ants  
Rodents • Bird Control • Fly Killers  
Fly Screens • Products / Services**

**FOR A FAST, RELIABLE RESPONSE**

**CALL FREE ON**

**0800 031 9388**

**Target**

creating a pest-free environment

[www.targetpestcontrol.co.uk](http://www.targetpestcontrol.co.uk) | [info@targetpestcontrol.co.uk](mailto:info@targetpestcontrol.co.uk)



# Roy Green

## Chartered Surveyors

*For complete independent professional advice in all property matters*

**Surveyors, Estate and Letting Agents**

### **Residential Lettings**

Full Management and Let Only Service  
42 years Local Professional Experience  
Management Fees from 10%  
Rent Guarantee Insurance subject to status  
Regular Inspections  
Tenant Reference and Credit Checks  
Professional Inventories  
Prompt Rent Collection and Landlord Payment  
Full Professional Service

*For a no obligation full market appraisal please call for  
an appointment*



First Floor, 15 The Nook, Anstey  
Leicestershire LE7 7AZ  
Tel: 0116 235 3009  
Fax: 0116 236 7485  
[www.roygreen.co.uk](http://www.roygreen.co.uk)



## **July August News**

Over two hundred family, friends and business colleagues recently attended the funeral of **Roy Green**. Roy was born in the Western Park area of Leicester in 1929. The third and youngest of Charles Edwin and Lucy Ida Green whose family business was Charles E. Green Jewellers in Leicester. He served his three years National Service with the RAF in Malta enjoying lots of good sailing. He joined Whittle, Attenborough and Peach and studied out of hours to become a Chartered Surveyor and Auctioneer. He became a partner of that firm before starting his own firm Roy Green Chartered Surveyors in Leicester in 1986. He married Janet in 1963 and they came to live in Newtown Linford living firstly at number 31 Main Street before moving to their present home.

Roy worked with the farming community of Leicestershire all his life and it was proof of how well he was respected by the number of people

who attended the funeral. Whittle Attenborough and Peach along with three other well known Agents ran the cattle market. Roy eventually became the Auctioneer in charge of the sheep section. More recently the firm of Roy Green moved from Leicester to Anstey.

Roy was a founder member of the Village Hall Committee, being instrumental in the lease negotiations with Everards Brewery. He also carried out Scout and Charity Auctions and will be remembered by many for being the Auctioneer of the Harvest Supper gifts. This event was very popular with many village families taking part.

The family would like to thank all friends and neighbours for their support over the last few weeks. Janet says everyone was so kind and helpful. Roy is survived by his wife Janet, three sons Richard, Jeremy and Timothy and their families.

I hear that Doreen Fletcher is extremely poorly. She and her late husband the Rev. Harry are still often talked about. She is seen here in the photograph which I guess is taken at the Vicarage I found it whilst browsing the Brewin family photographs. With the help of Sheila, I know the names of all bar one and they are: Verna Dakin, Sheila Langton, Lyn Richardson, Margaret Bullen, Billie Rigg, Kitty Plant, Joyce Perrin, Jean Hartridge, Lil Brewin, Florrie Anderson, Pat Clark, (unknown at the back) Lucille Thompson, Elsie Squirrel, Doreen Fletcher and Susan Harrison,



who attended the funeral. Whittle Attenborough and Peach along with three other well known Agents ran the cattle market. Roy eventually became the Auctioneer in charge of the sheep section. More recently the firm of Roy Green moved from Leicester to Anstey.

Roy was a founder member of the Village Hall Committee, being instrumental in the lease negotiations with Everards Brewery. He also carried out Scout and Charity Auctions and will be remembered by many for being the Auctioneer of the Harvest Supper gifts. This event was very popular with many village families taking part.

The family would like to thank all friends and neighbours for their support over the last few weeks. Janet says everyone was so kind and helpful. Roy is survived by his wife Janet, three sons Richard, Jeremy and Timothy and their families.

I hear that Doreen Fletcher is extremely poorly. She and her late husband the Rev. Harry are still often talked about. She is seen here in the photograph which I guess is taken at the Vicarage I found it whilst browsing the Brewin family photographs. With the help of Sheila, I know the names of all bar one and they are: Verna Dakin, Sheila Langton, Lyn Richardson, Margaret Bullen, Billie Rigg, Kitty Plant, Joyce Perrin, Jean Hartridge, Lil Brewin, Florrie Anderson, Pat Clark, (unknown at the back) Lucille Thompson, Elsie Squirrel, Doreen Fletcher and Susan Harrison,





the granddaughter of Maise Bentley.

Sam Waterfall tells me that he has now raised further monies bringing his total to £2,072. Well worth running for.

News from the Boule Team this month is that the winner was Peter Watson.

If you have relations elsewhere in the Country or World who would like to receive a copy of the magazine by email, please let me know their email address and I can send it. Alternatively you can tell them that it is on line on the Village website and they can read it from there. It is in colour even if the printed version is not, so it is worth having a look at the photographs if you wish to copy them.

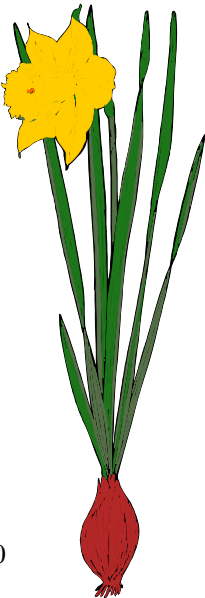
Pam McMorran, News Editor.

### **Brownies Daffodil Bulbs**

Apologies from the editor - last month I missed the photo of the girls from the letter they wrote to the magazine.

"We planted our daffodil bulbs in October 2008. They are dwarf daffodils called Tete-a-Tete. We have planted 3 bulbs and they flowered beautifully in March of this year

**Twins Charlotte and Lydia age 7 1/2**



# DIGIVISION AERIALS



**Confederation of  
Aerial Industries Ltd**  
A quality guaranteed installation at a fair price  
Member C1454

**Freeview**

**sky**

- Digital TV Aerials
- Extra Points
- FM / DAB Aerials
- AV Distribution
- LCD / Plasma TV Wall Mounting Service
- Phone Points
- Storm Damage
- OAP Discount
- Home Networking

**Fully Insured and CRB Checked**  
**Faults and Diagnostics - All Work is Meter Tested**  
**FRIENDLY LOCAL SERVICE**

**TELEPHONE: 0116 224 8045**

**OR MOBILE: 0793 272 4926**

Email: [info@digivisionaerials.co.uk](mailto:info@digivisionaerials.co.uk)

## GLEBE FARM

Quality Groundwork Specialists  
For both Domestic & Business Customers

**Highways Road Works**  
**Driveways and Kerbs**  
**Drainage & Utilities**  
**Parking Areas & White Lines**  
**Ground Excavations & Ground**  
**Clearances**  
**Landscaping**  
**Dry Stone Walling**

If there is anything else that you require,  
Please don't hesitate to ask as no job is too big  
or too small

Safety Policy, Risk Assessments & Method  
Statements available on request

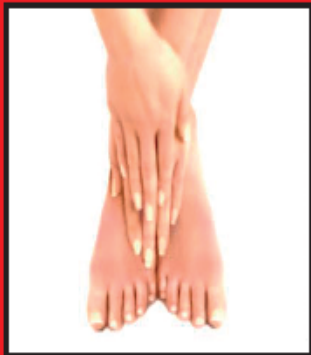
Tel: 01530 831770 Mob: 07970 104837  
Glebe Farm, Green Lane, Whitwick LE67 5EE  
Email [glebefarm@glebeservices.com](mailto:glebefarm@glebeservices.com)  
[www.glebeservices.com](http://www.glebeservices.com)



## Kathryn Farnham

BA HONS, M.A.R., IIHHT, Dip.GTR, BRCP

**Practitioner of Reflexology  
and Massage Therapy**



**For INTRODUCTORY OFFERS and more  
information on treatments please contact:**

The Little Annex, 61 Anstey Lane,  
Thurcaston, Leicestershire LE7 7JB

Telephone: 07878 933752 Email: [gente.reflex@gmail.com](mailto:gente.reflex@gmail.com)

## A & J GARDEN SERVICES

**General Garden Maintenance**  
**All types of**  
**garden work undertaken**

**Hedge and Tree Pruning**  
**Grass Cutting & Trimming**  
**Fencing & Slabbing**  
**Weed Control, Planting, Regular**  
**Maintaining of Borders**

**FREE ESTIMATE**

**Please call Andy Gibbins**  
**30 Anstey Lane**  
**Thurcaston LE7 7JA**

**Telephone 0116 2362158 or**  
**Mobile 07712 660535**





# DIGIVISION AERIALS



**Confederation of  
Aerial Industries Ltd**  
A quality guaranteed installation at a fair price  
Member C1454

**Freeview**

**sky**

- Digital TV Aerials
- Extra Points
- FM / DAB Aerials
- AV Distribution
- LCD / Plasma TV Wall Mounting Service
- Phone Points
- Storm Damage
- OAP Discount
- Home Networking

**Fully Insured and CRB Checked**  
**Faults and Diagnostics - All Work is Meter Tested**  
**FRIENDLY LOCAL SERVICE**

**TELEPHONE: 0116 224 8045**

**OR MOBILE: 0793 272 4926**

Email: [info@digivisionaerials.co.uk](mailto:info@digivisionaerials.co.uk)

## GLEBE FARM

Quality Groundwork Specialists  
For both Domestic & Business Customers

**Highways Road Works**  
**Driveways and Kerbs**  
**Drainage & Utilities**  
**Parking Areas & White Lines**  
**Ground Excavations & Ground**  
**Clearances**  
**Landscaping**  
**Dry Stone Walling**

If there is anything else that you require,  
Please don't hesitate to ask as no job is too big  
or too small

Safety Policy, Risk Assessments & Method  
Statements available on request

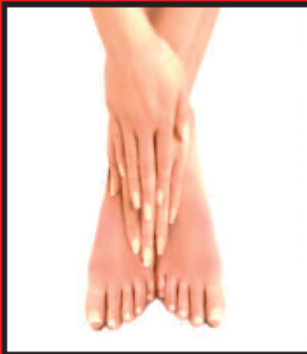
Tel: 01530 831770 Mob: 07970 104837  
Glebe Farm, Green Lane, Whitwick LE67 5EE  
Email [glebefarm@glebeservices.com](mailto:glebefarm@glebeservices.com)  
[www.glebeservices.com](http://www.glebeservices.com)



## Kathryn Farnham

BA HONS, M.A.R., IIHHT, Dip.GTR, BRCP

**Practitioner of Reflexology  
and Massage Therapy**



**For INTRODUCTORY OFFERS and more  
information on treatments please contact:**

The Little Annex, 61 Anstey Lane,  
Thurcaston, Leicestershire LE7 7JB

Telephone: 07878 933752 Email: [gente.reflex@gmail.com](mailto:gente.reflex@gmail.com)

## A & J GARDEN SERVICES

**General Garden Maintenance**

**All types of  
garden work undertaken**

**Hedge and Tree Pruning**  
**Grass Cutting & Trimming**  
**Fencing & Slabbing**  
**Weed Control, Planting, Regular**  
**Maintaining of Borders**

**FREE ESTIMATE**

**Please call Andy Gibbins**  
**30 Anstey Lane**  
**Thurcaston LE7 7JA**

**Telephone 0116 2362158 or**  
**Mobile 07712 660535**







# Newtown Linford Neighbourhood Watch



A member of the Parish Council

Good news from the Police. After a spate of burglaries in Thurcaston/Cropston a 29 year old male was arrested and appeared in the Magistrates Court in May when he was remanded in custody to appear before the Crown Court in August. He resisted arrest and I guess got fairly violent for him to be remanded in custody. Additional overnight patrols had been put on including dog handlers.

We have had two burglaries in Newtown recently both on the Main Street. In one case the downstairs window had been forced open whilst the occupants were asleep. Electrical items and the car were taken. (The keys to the car were well hidden). In the second incident the residents returned home around 5 p.m. in the afternoon and disturbed the burglars. The bedroom had been very untidily searched.

During the last couple of weeks, I have received several emails saying 'an email I have sent has failed' Warning: Never open them before studying them. The natural reaction is to panic, think what has failed and click open. Like me you will see that they are not correctly addressed to you but a variation to get through to you. I do not know what happens if you open them because I have never tried but I know several people who have their computers in a mess through doing so.

I hear from residents around the top car park at Old John that after a meeting Mr Harrison and the Trustees of the Park have agreed new measures to combat the unsavoury behaviour in the car park at night but I expect Lydia will tell you about that in her report.

Pam McMorrان, NHW Co-ordinator

### Contacting the Police

Dial 999 only if a crime is being committed or when life is in danger.

Police but not dire emergency 0116 222 2222

To call any police officer or PCSO Ring 0116 248 5675  
followed by their collar number.

Our neighbourhood beat officer is PC Steve Rhodes. To contact him, telephone 0116 248 5675 follow the instructions and when prompted enter the number 0544. This is for non emergency occasions.

If you have information about a crime and wish to remain anonymous, you can ring Leicestershire **CRIMESTOPPERS on 0800 555 111.**

# Progressive Computing

## Complete Computer Service

for Home and Business

We come to YOU at a time to suit  
- Additional Evenings or Sunday service available.\*



\* Closed Friday Evening  
and Saturday but  
open Sunday to Friday

Established  
1998

01530 490 052 or 07817 749 134

## E.W. Goddard & Sons

(Established 1970)

**QUALIFIED PLUMBERS  
AND  
HEATING ENGINEERS  
Bathroom and Tiling  
Specialists**

**All Building Work  
and Renovation**

\*\*\*\*\*

305 Markfield Lane  
Markfield LE67 9PR

Telephone

01530 245316 or 0116 2311672

## **LARGE PRINT COPIES**

If you know anyone or you yourself would like to receive a large print copy of the Village Magazine please contact Anne and David Couling on telephone 242452

**Many thanks to Newtown Linford School  
for the use of their facilities to produce  
the large print magazine.  
It is much appreciated**

# Progressive Computing

## Complete Computer Service

for Home and Business

We come to YOU at a time to suit  
- Additional Evenings or Sunday service available.\*



\* Closed Friday Evening  
and Saturday but  
open Sunday to Friday



01530 490 052 or 07817 749 134

# E.W. Goddard & Sons

(Established 1970)

**QUALIFIED PLUMBERS  
AND  
HEATING ENGINEERS  
Bathroom and Tiling  
Specialists**

**All Building Work  
and Renovation**

\*\*\*\*\*

305 Markfield Lane  
Markfield LE67 9PR

Telephone

01530 245316 or 0116 2311672

## **LARGE PRINT COPIES**

If you know anyone or you yourself would like to receive a large print copy of the Village Magazine please contact Anne and David Couling on telephone 242452

**Many thanks to Newtown Linford School  
for the use of their facilities to produce  
the large print magazine.  
It is much appreciated**



## **NEWTOWN LINFORD PARISH COUNCIL**

**Bob Bown Memorial Field:** The nets for the football goals arrived, and guess what, they were the wrong size! Correct ones promised asap. Unfortunately, there have been reports of empty beer cans and bottles being left in the area where the little children play. We have told the Police and they are going to monitor the site as often as they can. We have not yet heard from Biffa if our grant application for the drainage work on the 5-aside pitch has been awarded. If not, the money will have to come from Parish Council funds, but I will keep you informed.

**Casual Vacancy:** We think we may have found a new Councillor, but I have not yet received the proper application, so I won't jump the gun and tell you who it is.

We are between meetings at the moment, so I will have more to tell you after the next one.

**The July Parish Council meeting is on Monday 27th, and in August on the 24th.** Both meetings are at 7 pm in the Village Hall (small hall, side entrance). If there is anything you would like the Parish Council to know or to discuss, and you can't be there yourself, please contact me the week before the meeting and your item can be added to the agenda.

**Lydia Knott,**  
**Clerk to the Council**  
**tel: 01530 242522;**  
**email: [lydia.knott@btinternet.com](mailto:lydia.knott@btinternet.com)**

### **County Council Election.**

I would like to thank all residents within the Parish of Newtown Linford who voted for me in the County Council Elections on June 4<sup>th</sup>. I was very pleased that I was again successful in representing the Division of Bradgate for the next four years at County Hall.

I will do everything within my power to represent all residents irrespective of whether they voted for me or not. Some of my priorities will be to continue to oppose the proposed gypsy and travellers site on Anstey Lane, work with other agencies such as the Police to improve community safety within the Parish, especially reducing anti social behaviour and look for further improvements to the highway including road safety measures.

**David Snartt**

Watch Clock &  
Jewellery Repairs

## **SYKES JEWELLERS**

**Commissions undertaken**

**Presenting ranges from Lovelinks,  
White Ice, Alfred Terry, Fusion,  
Elvish  
and many more**

**Why not give us a call for friendly  
helpful advice. For the perfect gift or  
just to indulge yourself—call in and see  
us**

**8 BRADGATE ROAD, ANSTEY,  
Tel: 0116 236 2510**

**[www.sykesjewellers.co.uk](http://www.sykesjewellers.co.uk)**

**SPECIALISTS IN  
ANTIQUE CLOCK & BAROMETER  
RESTORATION**

## **COOK'S FARM SHOP**

**Markfield Lane, Newtown Linford  
01530 242214**

**FREE RANGE EGGS  
DUCK EGGS  
FRUIT - VEGETABLES**

**PICKLES AND PRESERVES  
SPECIALITY FOODS**

**Pet Foods & Accessories  
Feeds for Horses, Farm Animals and  
Small Animals, Bird Food etc.  
Hay – Straw – Shavings**

**LARGE YARD FOR PARKING**

**Mon to Sat 9–6 and Sun 10–1.  
Visa – Mastercard - Switch**



**Safeclean**<sup>®</sup>  
*The furnishing care specialists from* **GUARDSMAN**

**Professional carpet & uphol-  
stery cleaning and repair ser-  
vices**

- ◆ Curtains cleaned in situ
- ◆ Expert spot & stain removal
- ◆ Guaranteed 5 year anti-stain policy
- ◆ Hand finishing of swags & tails
- ◆ Mattresses deep cleaned
- ◆ Pest control, unpleasant or destruc-  
tive pests removed

**Telephone 0800 328 2927**

**[www.safeclean.co.uk](http://www.safeclean.co.uk)**

**WANSTEAD  
FLOORING &  
FRENCH  
POLISHING**

**YOUR LOCAL  
FLOORING SPECIALIST.**

**All timber floors laid**

**All existing timber floors  
sanded and refinished**

**Any colour or finish**

**Free quotations  
call Martin.**

**0116 2249770**



Watch Clock &  
Jewellery Repairs

## **SYKES JEWELLERS**

**Commissions undertaken**

Presenting ranges from Lovelinks,  
White Ice, Alfred Terry, Fusion,  
Elvish  
and many more

Why not give us a call for friendly  
helpful advice. For the perfect gift or  
just to indulge yourself—call in and see  
us

**8 BRADGATE ROAD, ANSTEY,  
Tel: 0116 236 2510**

**[www.sykesjewellers.co.uk](http://www.sykesjewellers.co.uk)**

SPECIALISTS IN  
ANTIQUE CLOCK & BAROMETER  
RESTORATION

## **COOK'S FARM SHOP**

Markfield Lane, Newtown Linford  
**01530 242214**

**FREE RANGE EGGS  
DUCK EGGS  
FRUIT - VEGETABLES**

**PICKLES AND PRESERVES  
SPECIALITY FOODS**

Pet Foods & Accessories  
Feeds for Horses, Farm Animals and  
Small Animals, Bird Food etc.  
Hay – Straw – Shavings

**LARGE YARD FOR PARKING**

**Mon to Sat 9–6 and Sun 10–1.  
Visa – Mastercard - Switch**



**Safeclean**<sup>®</sup>  
*The furnishing care specialists from* **GUARDSMAN**

**Professional carpet & uphol-  
stery cleaning and repair ser-  
vices**

- ◆ Curtains cleaned in situ
- ◆ Expert spot & stain removal
- ◆ Guaranteed 5 year anti-stain policy
- ◆ Hand finishing of swags & tails
- ◆ Mattresses deep cleaned
- ◆ Pest control, unpleasant or destruc-  
tive pests removed

**Telephone 0800 328 2927**

**[www.safeclean.co.uk](http://www.safeclean.co.uk)**

**WANSTEAD  
FLOORING &  
FRENCH  
POLISHING**

**YOUR LOCAL  
FLOORING SPECIALIST.**

**All timber floors laid**

**All existing timber floors  
sanded and refinished**

**Any colour or finish**

**Free quotations  
call Martin.  
0116 2249770**



PRIVATE AND  
COMMERCIAL

INTERIOR/EXTERIOR

**A.B. SHERRIFF**

Established 1988

**PAINTER  
&  
DECORATOR**

\*

**36 QUEENS PARK WAY  
LEICESTER**

Telephone: 0116 277 9293

Mobile: 07719 366569

**Peter Henton**

**Domestic Appliance  
Repairs**

**Ex Zanussi Senior Engineer**

**Tel 0116 2896529**

**Mobile 07711 265414**

### **Magazine Contributions**

Can we please have your contributions for the September 2009 issue by **15th August 2009** please. **Send to the Editor, Carole Heubeck, 5 Grey Crescent, Newtown Linford (01530 244790).**

**E-mail [carole@heubeck.freeserve.co.uk](mailto:carole@heubeck.freeserve.co.uk) and [heubecks@gmail.com](mailto:heubecks@gmail.com)**

**Please could you send any emails to both of the email addresses above If you do not receive an acknowledgement of your email— please contact Carole, the Editor direct on the above number to check we have received it.**

The opinions expressed by the contributors are not necessarily those of the Editors and they reserve the right to amend, shorten or not print any article or advertisement submitted for publication. Whilst every effort has been made to ensure the accuracy of the information printed in this magazine, and advertisements are accepted in good faith, no liability can be accepted for loss, damage or claim of any kind incurred by the reader

### **Booking of Village Facilities**

**To book the Village Hall -- call Pat Wood on 242251.**

**To book the Sunday School Room— call Casey Pearson on 249259**

