

# **ISSUE NUMBER 66**

## **CONTENTS**

### **September 2009**

<b>Church News</b>	<b>3/4, 22/23</b>
<b>Scarecrow Festival</b>	<b>6</b>
<b>All Saint's Fellowship</b>	<b>8</b>
<b>Drama Auditions</b>	<b>8</b>
<b>Ramblers</b>	<b>11</b>
<b>Linford Song Club</b>	<b>12</b>
<b>Choral Society</b>	<b>15</b>
<b>Brownies</b>	<b>16</b>
<b>Gardening Club</b>	<b>19</b>
<b>Bradgate Flower Club</b>	<b>21</b>
<b>Out of school care</b>	<b>24</b>
<b>September News</b>	<b>29</b>
<b>From the Records</b>	<b>33</b>
<b>Leicester Lions</b>	<b>35</b>
<b>Neighbourhood Watch</b>	<b>37</b>
<b>Parish Council</b>	<b>40</b>



## Pastoral Letter from Anne Stratton

### **What is this life if, full of care, we have no time to stand and stare.**

I don't know about you, but this has felt like a much busier Summer than usual. We seemed to fly from Richard's farewell, to recruitment of a new Rector, to starting to prepare for the Walk National Forest Team coming to Ratby in September. In between all that my son got married and I'm sure many of you packed other things in as well. Before we all knew it the Summer holidays are over and we are faced with the Autumn, back to school and Christmas will be just round the corner, with all that that holds!

Where something like waiting for the announcement of the new Rector felt like a long time going forward, when we look back it was just a short time during the holidays. The wait until he joins us may also seem long until we look back on it, but we need to take it as an opportunity. It made me think of that famous poem Leisure which I have quoted above.

It is important to stop for a while and not just go rushing on into the Autumn. To take time to look at where we are and where we want to be. How can we change our personal or family routine to give ourselves and our families more time and space?

What changes should we try and make in ourselves so that we can serve one another better? Where can we find a little more time to fit God in and wonder at his creation and all that he has for us? How can we make our Churches grow and be places that people really want to join?

Even Jesus took time to go away on his own and spend time with his Father, taking stock, recharging his batteries and planning for the future. So it must be even more important for us to do it and not just keep going on and on.

So can I encourage you before too much longer, to take some time in a quiet place, spend some time standing and staring; watch the world go by and see what your place is in this world of ours. Reflect on what you can offer others and what they can offer you and as our Parish is soon to enter a time of change, what active part can you take in that?

3 The Walk National Forest Team will be here from 13<sup>th</sup>- 20<sup>th</sup>

September. Plan to spend time talking to them, attending some of the events and services and inviting other people to join you. It will challenge you however much you believe. You may even want to take the opportunity to challenge them at the 'Hot Potato' session on the Friday lunch time – how does everything fit together and make any sort of sense in our world today?

But most importantly take some time to stop and review and then move forward ready to face whatever changes may be ahead.

Wishing you a peaceful and yet challenging time.

**Anne Stratton**

### **Team Parish News:**

*Scarecrow Festival and Harvest at Newtown Linford 26<sup>th</sup>-27 Sept.*

*Walk National Forest 13<sup>th</sup> – 20<sup>th</sup> Sept.*

### **The Appointment has been made.....**

We are pleased to announce the appointment of the Revd. Dr. Peter Hooper as the next Team Rector of the Bradgate Team. Peter was born in Redcar, educated in Lancashire, and obtained a BSc. and PhD. in Agriculture at the University of Newcastle Upon Tyne. Before ordination, he worked in France for 11 years as a Managing Director and Director in two companies engaged in agricultural forage products. He trained for Ministry at the Institut Catholique de Toulouse and the University of Nottingham and was ordained in 2006 in the Diocese of Leicester. Peter is married and has a son and daughter. We look forward to welcoming Peter and his family to the Team Parish in the New Year.



### **What the Bishop didn't**

**say.** Any announcement that

has to be given in a short space of time, tends to be mostly factual and the more interesting personal bits are missed out! So, I thought it would be good to write a few lines about what the Bishop didn't say in his announcement.

4 First and foremost, I want to say just how very excited we all are as

a family about our move to the Bradgate Team. As things stand at the moment, we are hoping to move in to the Parish during the run up to Christmas, my duties finishing in the Melton Team on Christmas Day. This

should also allow the children plenty of time to find their school books again before AS mock exams in the first week of January! My wife, Suzanne, a farmer's daughter from north Nottinghamshire, currently teaches French in four different Primary Schools here in Melton. She is a 'Homestart' volunteer and is very involved in Parish life, especially leading the Eco-team which is on the verge of applying for St Mary's Church's first 'Eco-Congregation' award. Sue is a keen swimmer, a cyclist, loves gardening and all things French. We have two children, William who is 16 and currently awaiting GCSE results, and Catherine who is nearly 15. Having attended French schools for most of their academic lives, they will have no problems giving a helping hand to any of the young people in the Parish who may have difficulties with their French homework! As for me, I swim regularly, enjoy following the rise (and fall!) of Sunderland football club, as well as many other sports. I love the chance to be outside, and will happily do anything (most things!) if it involves a bit of fresh air.

## VILLAGE DIARY

### **September**

2nd Flower Club  
6th Leicester Lions  
6th Sunday School  
8th Drama Auditions  
12th Ramblers  
22nd Gardening Club  
26th /27th Scarecrow Festival  
28th Parish Council

### **Regular events**

1st Sunday in the Month @11am Sunday School -  
Sunday Evenings at the Linford - 7-10.30pm Lady Jane Grey Club for  
single people  
last Tuesday of the month Gardening Club  
Thursdays am Toddlers Group  
3rd Thursday Gentlemens' Lunch Club

# NEWTOWN LINFORD SCARECROW & VILLAGE FESTIVAL

**Saturday 26th & Sunday 27th September 2009**

Scarecrows & Scarecrow Teas,

Original Paintings/Photographs

Cards/Jewellery/Books

Old Village Photographs

Harvest Festival,

Church Bell Tower Event

Village Design Statement Exhibition

Village Record and DVD

Live Music



## ***Saturday Attractions include:-***

Afternoon Teas at the School.

Our Bell ringers are holding an event in the Church Tower on both days-  
your chance to ring a Church bell? Toy Stall at the Church

## ***Sunday Afternoon at the Village Hall:-.***

Scarecrow Sunday Afternoon Teas.

Original Paintings/ Photographs/Cards/Jewellery/Books, etc.

Village Photographs Exhibition.

Part of the Village Record which dates back over 60 years  
will be on display.

The Village Video with film from 1955 will be available on DVD.

Exhibition of the Village Design Statement

Live music from Retro Barbershop Quartet

(British Quartet Championship Finalists).

## ***Sunday at the Church:-***

Harvest Festival. Come to the Service at 11am  
or, in the afternoon, admire our beautifully decorated Church.

Have a go at ringing a Church bell, just one of the events.

Live music from Retro

**Entry forms will be available in the Village Shop from 1<sup>st</sup> September. As usual there will be 4 classes and a “People’s Choice” of Scarecrow. There is no theme this year and absolutely no age limit. Prizes will be presented by Councillor David Snartt at 4pm in the Village Hall on Sunday 27<sup>th</sup>.**

***Around the village.*** As you stroll round choosing your favourite Scarecrows, look out for the Desford pedallers on their vintage bicycles. Fund raising this year will be for Village Organisations

A very big thank you to Sharon and Tony and their staff at the Village Shop and to our advertisers and exhibitors. We hope everyone will enjoy the event this year and we look forward to seeing the amazing Scarecrows. We can't do it without you!

**Enquiries to Iris Sayer 01530 243822**

## **Wanted - Second Hand Books**

As part of the Scarecrow Festival weekend events, on Sunday afternoon, 27th September, there will be a second hand book stall in the Village Hall. Now is your chance to prune those overloaded book shelves at home! We will be very grateful to receive donations of books for the stall - if you have any to offer please phone me on 01530 243822, or Jan Croft on 01530 244865. Profits from the book stall will go to village organisations and good causes.



**ALL SAINT'S FELLOWSHIP AND WELCOME CLUB.**  
**DAY OUT TO ULVERSCROFT GRANGE.**

We would very much like to thank Gill Bates for organizing such a day and also the transport required to assist everyone to be there.



Everyone has assured me that they enjoyed the friendship and relaxation at the Grange and the delightful lunch. At a time when Gill and Des are busy caring and cooking for their grandchildren we send our love and thanks for all her efforts.

**ALL SAINT'S FELLOWSHIP AND WELCOME CLUB.**

Another special afternoon and speaker.

Rev, Louise Corke, after a period of study leave and a mountain of work piling up on her return has found the time to come and speak to us. First about the history of The Pilgrims Way, and then who and what she found during her walk and her later visits to-----?? Louise will tell you all about them.

**PLEASE DO COME**

Transport if required.

AFTERNOON TEA.

**Kathleen.**



**Bradgate Drama Group**

will be holding

**Auditions**

for their Pantomime on

**Tuesday Sept, 8th at 7.30**

in the Village Hall Newtown Linford.

**The production dates will be Dec 3,4,5, 2009.**

Everybody is welcome its fun, Oh.....yes it is.



**if you require any further information please ring Peter Upton  
01530 249257.or 07703303785**

Watch Clock &  
Jewellery Repairs

## **SYKES JEWELLERS**

**Commissions undertaken**

Presenting ranges from Lovelinks,  
White Ice, Alfred Terry, Fusion,  
Elvish  
and many more

Why not give us a call for friendly  
helpful advice. For the perfect gift or  
just to indulge yourself—call in and see  
us

**8 BRADGATE ROAD, ANSTEY,  
Tel: 0116 236 2510**

**[www.sykesjewellers.co.uk](http://www.sykesjewellers.co.uk)**

SPECIALISTS IN  
ANTIQUE CLOCK & BAROMETER  
RESTORATION

## **COOK'S FARM SHOP**

Markfield Lane, Newtown Linford  
**01530 242214**

**FREE RANGE EGGS  
DUCK EGGS  
FRUIT - VEGETABLES**

**PICKLES AND PRESERVES  
SPECIALITY FOODS**

Pet Foods & Accessories  
Feeds for Horses, Farm Animals and  
Small Animals, Bird Food etc.  
Hay – Straw – Shavings

**LARGE YARD FOR PARKING**

**Mon to Sat 9–6 and Sun 10–1.  
Visa – Mastercard - Switch**



**Safeclean**<sup>®</sup>  
*The furnishing care specialists from* **GUARDSMAN**

**Professional carpet & uphol-  
stery cleaning and repair ser-  
vices**

- ◆ Curtains cleaned in situ
- ◆ Expert spot & stain removal
- ◆ Guaranteed 5 year anti-stain policy
- ◆ Hand finishing of swags & tails
- ◆ Mattresses deep cleaned
- ◆ Pest control, unpleasant or destruc-  
tive pests removed

**Telephone 0800 328 2927**

**[www.safeclean.co.uk](http://www.safeclean.co.uk)**

10

## **WANSTEAD FLOORING & FRENCH POLISHING**

**YOUR LOCAL  
FLOORING SPECIALIST.**

**All timber floors laid**

**All existing timber floors  
sanded and refinished**

**Any colour or finish**

**Free quotations  
call Martin.**

**0116 2249770  
07973256176**





### **Newtown Ramblers 2009**

12<sup>th</sup> Sept. Meet 2.00p.m. opposite the Village Hall,  
**Leader** Ed Killick. Tel.249589

In July our day walk to Derbys was enjoyed by all in lovely weather. We walked a circular from Chatsworth and stopped at the ancient market town of Bakewell, where the Summer Festival was in full swing. Some of us were even entertained by Elvis Presley!! Then again we had lovely weather for our August walk from Outwoods to Loughborough. Third time lucky we had an evening walk around Thornton Reservoir again in sunshine, followed by a delicious Pie at the Bricklayers Arms.

12<sup>th</sup> Sept. is the day when the churches are open to be visited by walkers and cyclists. Swithland village will also have it's annual veg. fete, so Ed's walk in Sept. will have added interest and stops for tea and cakes.

New members are always welcome. All you need is a pair of walking shoes or boots. Dogs are welcome only under the supervision of the owner, and to be on the lead where there is livestock or nesting birds. Please check with the walk leader that dogs are allowed across any access land.

Any queries, please ring Glenis Meredith, Tel.01530 242897.

11 Disclaimer. Members are reminded that participation in walks is at their own risk, and that the leader(s) accepts no liability for any loss or injury, however caused.

**THE LINFORD  
SONG CLUB**  
FRIDAY 2ND OCT 8:00PM

**THE AMAZING  
DARYL KIRKLAND  
&  
YELLOWBELLY**  
PLUS  
SPECIAL GUESTS

The Linford  
Main Street  
Newton Linford  
Leicestershire

songclub@logicalvent.com

**Tickets £2.50**

**You don't have to go to the City to find culture!**

**Friday 2<sup>nd</sup> October** sees the launch of **The Linford Song Club** and it gets off to spectacular start with songwriter **Daryl Kirkland** and his band **The Kirkland Turn** following on from their performance at Leicester's **Summer Sundae Festival**.

Daryl is more famously know as lead singer of **El Pussycat** – but his side projects mean he is ever willing to experiment and explore new musical territory and with a powerful and evocative voice is able to roam quirky and emotional avenues. Underpinned by a fabulous rhythm section they are an act to behold.

Don't miss his strong powerful vocals and arrangements of dark and wonderful songs. Supporting Daryl is Leicester's very own **Yellowbelly**. Formed in 1993 by songwriters **Gaz Birtles** (vocals, sax) and **Dave 'Wal' Walton** (guitar, backing vocals). The concept of the band was to write and perform music that was highly entertaining but indulged their quirky fondness for country music! Additional songwriter, bass player and keyboardist **James Lynch** soon joined the band and his pop sensibility and falsetto harmonies matched Gaz and Wal's vocal range perfectly. Their songs are not meant to be background music and they have a reputation as a great live band where on any given night their audience could be amused or abused! But they always have a tongue placed firmly in cheek. So what are waiting for?

**Tickets are £2.50** and available in advance from **The Linford** to avoid disappointment.

## NEWTON LINFORD CHORAL SOCIETY OUR 10<sup>TH</sup> ANNIVERSARY YEAR



### SUMMER CELEBRATIONS

This is an exciting and eventful year for the Choral Society as we celebrate our 10th Anniversary. In July 2009 over 40 members of the Choir, and several supporters, including 3 of our loyal Patrons, travelled to the Royal Albert Hall to sing John Rutter's Requiem (conducted by the Composer).

This very special Day was organised by the "Really Big Chorus" and we had the great pleasure of joining with 2000 other dedicated singers. Some had travelled great distances from all over the British Isles, Ireland and the Balearic Islands for this unique event.

After a very early start, some members left home at 6.30am, we had a wonderful day. It was all very well organised with rehearsals in the morning and afternoon. We had plenty of time for a picnic lunch in Hyde Park in glorious sunshine.

The Concert was performed in the evening with a professional orchestra and soloists, to a warm and enthusiastic audience.

It has been a very busy summer for us as over 300 people bought tickets for the Summer Concerts which were held in June. Our next event will be a Performance for the Bradgate Twinning Society, and their French visitors, on 31st October in Glenfield.

Our Winter Concerts will be held on 29th and 30th January 2010.

For any enquiries concerning the Choir, contact Hon Sec Peter Sayer



## Brownies Sports Night

**Sports Night:** having just completed putting their faces in a bowl of flour to hunt for the Jelly babies



**Potato Competition:** eager to see who had the largest crop, largest potato, smallest potato etc—judged by Brian Anderson

**Making Biscuits:** - for Richard the Vicars Leaving service





John and Eve Bowtell welcome all to

# The Bradgate



— Main Street, Newtown Linford —

Opening hours

Mon - Thurs 11.30 - 3pm & 5.30 - 11pm

Friday Saturday (food served all day) 11.30 - 11pm

Sunday 12 noon - 9.30pm

## Monday—BACK BY POPULAR DEMAND

2 for £10 Lunch and evenings

## Tuesday—Pie Night

Choice of 3 Pies with mash or chips and peas - £5.95

## Wednesday—Steak Night

2 steaks and a free bottle of wine for £16.95

## Thursday Nights are Theme Nights

**Friday / Saturday Food  
served 12 till 9pm**

**Sunday Carvery—from  
12 till 6pm**

**Menu 6pm—8pm**



**Telephone  
01530 242239**

## Newtown Linford Gardening Club

The trip to Coton Manor in late July was tremendously successful. Not only did we have a full coach load but we also managed to go on the one day in the fortnight which was warm and sunny. As a result, we could wander the gardens at leisure, sit in the sun and enjoy an afternoon cup of tea without struggling against the elements. The gardens were beautifully kept, the flowers colourful and the ducks, chickens and flamingos wandering on the lawn added to a 'different' garden experience.

We have finally received our letter of acceptance from Highgrove, the residence of Prince Charles, to visit the garden. We welcomed the then head gardener, David Howard, almost two years ago as a speaker and have been on the waiting list ever since. A party of 25 members will be able to make the trip on Thursday October 8<sup>th</sup>.



Our September meeting will be in the Village hall on Tuesday 22<sup>nd</sup>

September, (just a few days before the Scarecrow Weekend). Our speaker will be Malcolm Beerman who is talking about Encliandra Fuchsia Shapes – that's a kind of topiary to you and me!!!! New members and visitors are always welcome.

We have had several new members join us over the last year and we are always pleased to welcome more. If you wish to become a member, please contact the Secretary (tel. 242452), or come to one of our meetings to see how you like it before making a commitment (£2 for visitors).

**Anne and David Couling**

## **Church Flowers**

We are still wanting willing helpers to join us on the weekly flower rota.

We are not asking for elaborate floral decorating just flowers at the altar. Could you provide and arrange flowers in a glass vase like you would at home - this is all we ask? With those who like to do more - these help us to give a greater variety in the Church. One Sunday in the year to fit in with your life is not a lot to ask. Please come forward



## **BRADGATE FLOWER CLUB**

After a rather soggy and disappointing summer break in July we met again on 5<sup>th</sup> August with a delightful demonstration by Barbara Smith, "Seasonal Delights". Even Barbara had problems with season flowers as she usually is able to pick her own garden flowers which were not very forthcoming this year. Nevertheless her arrangements were beautiful. She was also very entertaining with lots of fun stories from her life as a Demonstrator and Flower Arranger.

Our outing to Hidcote Manor Gardens was a great success despite the weather being wet and cold. Everybody enjoyed the gardens and most came away with a plant or two.

A group of us attended the Area Members Day at the Walkers Stadium. This was a most entertaining day with a talk, a demonstration and an excellent lunch, and a good opportunity to catch up with friends from other clubs throughout the area.

Our next meeting will be on

**Wednesday 2<sup>nd</sup> September  
Michael Bowyer  
The Changing Season  
At the Village Hall at 7.30 pm**

Guests are always welcome.

**Sue Howard**

**01530 245373**



### **LARGE PRINT COPIES**

If you know anyone or you yourself would like to receive a large print copy of the Village Magazine please contact Anne and David Couling on telephone 242452

**Many thanks to Newtown Linford School  
for the use of their facilities to produce the  
large print magazine.  
It is much appreciated**

## Bradgate Team Sunday Services September 2009

Date	Groby	Ratby	Newtown Linford
6 <sup>th</sup> Sept	8.00am Holy Communion		
	9.30am Family Service	10.00am Worship for All	11.00am Family Communion
	6.30pm Holy Communion	6.00pm Holy Communion	
13 <sup>th</sup> Sept		8.00am Holy Communion	8.00am Holy Communion
	9.30am Holy Communion	10.00am Morning Worship	11.00am Family Service
	6.30pm Evening Service		
20 <sup>th</sup> Sept	8.00am Holy Communion		
	9.30am Morning Worship	10.00am CTR Walk National Forest	11.00am HC Walk National For- est
	6.30pm 3SE		
27 <sup>th</sup> Sept			8.00am Holy Communion
	9.30am Holy Communion	10.00am Holy Communion	11.00am Harvest: All-age Celebration
	6.30pm Evening Prayer		

### Midweek Communion Services

Wednesdays at 9.30am

Alternate Thursdays at 10am: 3rd Sept

Alternate Thursdays at 9.30am: 10<sup>th</sup> & 24<sup>th</sup> Sept





## Church Services and Events for September

### **Sunday 6th September—13th after Trinity**

8.00am Holy Communion at Groby Louise Corke  
11.00am Family Communion Louise Corke

### **Sunday 13th September – 14th after Trinity**

8.00am Holy Communion Canon Derek Buxton  
11.00am Family Service Keith Wignall

### **Sunday 20<sup>th</sup> September 15th After Trinity**

8.00am Holy Communion at Groby Louise Corke  
**11am Holy Communion Walk Nat. Forest** Ann Stratton

### **Sunday 27<sup>th</sup> September –16th after Trinity / Harvest Festival**

8.00am Holy Communion Louise Corke  
11.00am **Harvest All Age Celebration** Hilary Ayling

### ***Thursday Communions in September***

Thursday 3rd September 10.00am Louise Corke

### **Focus Prayer Times in September**

Tuesdays at **10.00am** (*Please note later starting time*) in Church on 8th and 22nd September.

*Contact the Team Vicar, Revd Louise Corke 0116 231 3090*  
[words.th@talktalk.net](mailto:words.th@talktalk.net)

## **Sunday School**

**Our next Sunday Special will be on  
Sunday 6th September between 11am and 12 noon**

**Come along and join us for Arts and Crafts, Games, drinks, biscuits  
decorating, Bible stories, prayers and fun!**

**Everyone welcome**

***Contact Katherine on 244790 for more details.***

## Out-Of-School Care in Newtown Linford

Following recognition of a big demand for out-of-school care for children who attend Newtown Linford Primary School, local parent (and qualified nursery manager), Kara Unwin, is hoping to set up an out-of-school facility. It is planned that this will run in the Sunday School rooms, near the main entrance to Bradgate Park in the Village.

Whilst this is a business venture, it will provide a much needed resource for the community, and is being supported by local parents. To help initial set up, we would like to ask parents, families – and businesses too, if you can help – to donate any unwanted or outgrown toys, games, art and craft items and any other activities for children (between 4 and 13 years of age). Any items would be very much appreciated and Kara would be happy to pick them up from you.

If you have anything you can donate, or would like to find out more about plans for out of school care, please contact Kara on 01530 243099 or (mobile) 07837471126. More details will follow in future magazines about days and times of sessions.

## **Roy Green Chartered Surveyors**

*For complete independent professional advice in all property matters*

**Surveyors, Estate and Letting Agents**

### **Residential Lettings**

Full Management and Let Only Service  
42 years Local Professional Experience  
Management Fees from 10%  
Rent Guarantee Insurance subject to status  
Regular Inspections  
Tenant Reference and Credit Checks  
Professional Inventories  
Prompt Rent Collection and Landlord Payment  
Full Professional Service

*For a no obligation full market appraisal please call for an appointment*



First Floor, 15 The Nook, Anstey  
Leicestershire LE7 7AZ  
Tel: 0116 235 3009  
Fax: 0116 236 7485  
www.roygreen.co.uk



## Newtown Linford Village Hall

Village Hall bookings during weekdays are generally running at a high level and it is often difficult to fit in casual bookings. Weekends, however, are more available, so if you are a village resident and planning a private function, please let me know as we may be able to accommodate you.

If you (or your club/organisation) are planning a fund raising event in the Village, it may be that another organisation has had the same idea, so when you book the Hall **PLEASE** ask me to check either side of your proposed date, as I cannot possibly remember all existing bookings (some will have been made several months earlier) - I'm already looking at dates in August 2010 !!

Thank you for your co-operation **Pat Wood (Booking Secretary)**

### **Congratulations**

To everyone who has just finished their A levels and is leaving the village for university or pastures new.

Send the editor information and we will put full details in next month

## **Paint Wizard**

Proprietor Paul Beaver, Grey Crescent, Newtown Linford

**Working for You—All types of smart repairs including:**

**Panel Resprays from £130**

**Bumper Corner Repairs from £55**

**Colour Restoration From £55**

**Alloy Wheel Refurbishment from £45**

Polished \* Painted \* Colour coded \* Chrome

**New wheels & tyres supplied**

**At competitive prices**

**Free Collection & Delivery Service Available**

**All prices are plus VAT charged at the prevailing rate**

**0116 253 7371 or 07850 456696**

**Unit 10, Raithby Lawrence Yard, Slater Street, Leicester, LE3 5AS**

**WORRY - DEPRESSION - ANXIETY - ANGER - OCD - PTSD**

## **COGNITIVE BEHAVIOURAL THERAPY**

A COST EFFECTIVE THERAPY  
BASED ON EVIDENCE OF WHAT ACTUALLY WORKS.

cbttherapist.co.uk  
Tel : 0845 4178044

**Dr Gerry Kearns B.Sc.(hons), Pg.Cert, Pg.Dip, M.A, M.Phil, Ph.D**

**PANIC - PHOBIA - CFS - SUBSTANCE MISUSE - PAIN - IBS**

*Glebe Von Wood*  
*Encouraging Happy, Healthy Pets*

### **Doggy Day Care**

Socialisation in groups of 2-5, 3 times a day

### **Personality Assessments**

With our on site Trainer Anne Bull from AMK9

### **Agility Training**

Wednesday Evening 7.00-8.00pm  
£5.00 per session

### **Opening Hours**

Mon - Fri 9 - 10.30am & 4 - 5.30pm  
Sat - Sun 9 - 10.30am & 2 - 3.30pm

Tel: 01530 813145 Mob: 07970 104756  
Glebe Farm Green Lane Whitwick Leicestershire LE67 5EE  
e-mail: glebevonwood@glebeservices.com www.glebevonwood.co.uk



**NEWTOWN  
LINFORD  
VILLAGE HALL**

## **Senior's Christmas Lunch.**

The date for this will  
be

**THURSDAY  
10th DECEMBER.**

Please make a note  
in your diaries



## ***More than 170 Leicestershire walks to download and print FREE!***

There's no doubt about it, walking is good for you. It's good for your heart, it's good for your lungs, it's good for the muscle and bone growth of your children and it's good for your feeling of wellbeing! Strong scientific evidence now supports the many benefits to health of regular walking – it is recommended that we take at least 10,000 steps a day.

Studies show that walking can:

- Reduce the risk of coronary heart disease and stroke
- Lower blood pressure
- Reduce high cholesterol
- Reduce body fat
- Enhance mental well being

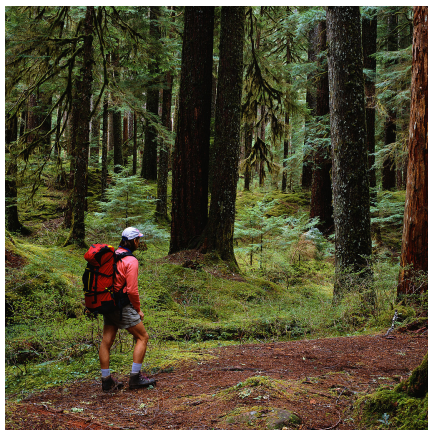
Walking offers a great way to help kids get the active habit. If parents express excitement about the prospect of a walk in the countryside, they are more likely to transmit this feeling to their children. It's important to treat the walk as an exploration or adventure and to go at the child's pace, no matter how often they want to stop and look at things; take treats to eat and plenty to drink; and head for some landmark that will appeal to them such as a castle, a playground, an ice cream van or a boating pond. If children experience walking as part of a fun activity they are more likely to want to go again.

So, how do you find out what is on offer? John Harris, a keen walker, got fed up with the lack of information on walks that were going on in the County. So, he decided that if he couldn't find what he was looking for – he had better create it! So [www.walkinginleics.co.uk](http://www.walkinginleics.co.uk) came into being.

[www.walkinginleics.co.uk](http://www.walkinginleics.co.uk) gives you all the information you need for the best walking in the County:

Details of more than 170 walks to download and print free, details of all the Leicestershire walking groups, maps and walk books – plus loads more information.

So check out the website and get walking!



## September News

Welcome to Kara and Antony Unwin who with their children Grace and Sam now live in Rose Mary Naylor's old home.



Sam and Grace with Kara come to the Mothers and Toddlers on Thursday mornings in the

school. I know that the family came to live in the Village because they want the children to go to the Village School. It is not unusual for families to do this. We must be very proud of our School and what it achieves. Kara is very welcome at Mothers and Toddlers because she has worked in a Nursery since she was 16 and subsequently managed a Nursery.

Kara intended to register as a child minder, which she is doing, but after discovering that there was a big demand by working parents for before and after care for their children of school age she is now following this up.

The registration with Ofsted and her Insurance cover etc is presently being dealt with and should soon be completed. The DCC has agreed for the Sunday School Rooms to be used and she hopes to begin with the After School Club when term begins or as soon as possible thereafter. I think there are arrangements for the children to be walked from the School to the Sunday School Rooms. Other staff are also being employed. If you are interested in this club then Kara has said I can print her mobile number: 0783 7471126. which I understand works perfectly in their home (*not many other places in the village*)

On Sunday August 2<sup>nd</sup> Maurice and I were lucky enough to celebrate our 40<sup>th</sup> Wedding Anniversary on the actual day. Paul and Jeni celebrated their 4<sup>th</sup> Wedding Anniversary that week and their sons George



and Alfie were baptized on the 2<sup>nd</sup>. The photograph shows George cutting the cake which was made by the same lady that makes the cakes for Church events.



*The sponge is beautiful and the price is reasonable – if you ever need a cake, ask me for her number.]*

The Baptism was carried out by Prebendary John Woolmer during the Morning Communion Service. The Church was pretty full with many children as we had over 60 guests including John and his wife Jane back for a buffet lunch in the garden. Eunice came with her granddaughter Amanda (*Faye's daughter*) with her son Harvey. It is great to see the family still joining in village life especially when four generations come as they often do.

For those who may be saying what is a Prebendary: Here is a quick explanation. Most Cathedrals appoint Canons for long time service to the Church (e.g.. Canon Derek Buxton) but some Cathedrals did not abolish this term during the reformation and John is a Prebendary of Wells Cathedral. He lives in our Parish and officially is retired but still assists several Parishes including this one. In fact he took a Service at The Martyrs in Leicester recently for the Revd. Richard Worsfold who was on holiday. Incidentally John has written several books which you might like to read. I am sure he will sell you one if you contact him.

Despite all the rainy days the 2<sup>nd</sup> was a marvellous day as was the Tuesday that week when the Gardening Club had a very successful outing to Coton Manor in Northamptonshire. 45 members plus

George (my grandson) went along. Lunch was enjoyed in the stable room followed by a leisurely walk round the gardens. It was good to see Harry being able to come and join us.

The Boule team correspondent tells me that boule was rained off in July but that Tom Clarke won at indoor skittles instead. The August winner was Keith Turner.

I have received a lengthy letter from Andy August after I thanked him for the News about himself that he had put on the Guest book page on the Parish Council website. (He spoke of his serious operation and his faith in God) He lived with his family in Grey Crescent. In this letter he speaks of fond memories of living in Newtown and how his father was Warden at All Saints. In his letter he mentions Lydia, the Greens, the Colemans and the Aylings. It is a long letter so if anyone would like to read it, please let me know, email would be easiest but I can post a copy.

**Pam McMorran, News Editor.**



**CURTAINS, BLINDS AND  
SOFT FURNISHINGS**

*by Joanne Sjoberg*

*For a personal design, measuring and  
make-up service call*

**07870 111222**

**The Croft, Leicester Lane, Desford, Leicestershire LE9 9JJ**



## From the Records

### Fighting for our Life

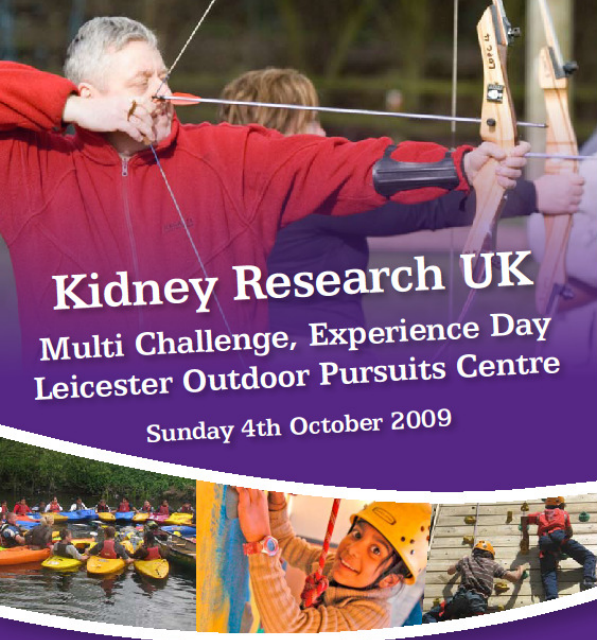
It is now more than 20 years since we were alarmed to discover that ARC wanted to dig a 256 acre Mega Quarry on the doorstep of Bradgate Park, to join up their two mining areas - Groby Quarry and Lawnwood/Bradgate Quarry.

Previously, through the hard work of Bob Bown and the petition, we had the M1 routed away from the village. This time the problem could not be moved by our efforts but hopefully prevented by our concerted intervention.

From November 1987, when ARC announced the plan to January 1989, when the County Council Planning and Recreational Committee refused the application, (this was ratified by the full Council), the village records are full of the press coverage of the whole story, views, comments and action taken.

ARC then took it to an appeal to the Secretary of State which meant a Public Inquiry. The final decision was still not known. It was September 1989 when ARC decided to withdraw the Appeal for the Mega Quarry. The reason given was "They knew they would not win due to the overwhelming opposition from local residents, Newtown Linford Parish Council and Leicestershire County Council".

While the appeal was pending ARC went back to the drawing board and discussed with the County Council and the Parishes about the future plans for Groby and Bradgate Quarries. That is another story.




**Kidney Research UK**  
Multi Challenge, Experience Day  
Leicester Outdoor Pursuits Centre  
Sunday 4th October 2009

Call us on  
**01332 875358**  
for more information

or email [eileenbagguley@kidneyresearchuk.org](mailto:eileenbagguley@kidneyresearchuk.org)  
[www.kidneyresearchuk.org](http://www.kidneyresearchuk.org)

Registered Charity No: 252892 Registered Scottish Charity No: SC039545



**Kidney Research UK**  
Funding research to save lives

# **LEICESTER HOST LIONS CLUB**

**invite you and your friends to a sale of**

## **BOOKS**

**HOME & GARDEN PRODUCE**

**CAKES \* BRIC-A-BRAC \* PLANTS  
PAINTING EXHIBITION / ART SALE**

**all in the beautiful gardens of  
Mr. & Mrs. Cedric Murray**

**240, Markfield Lane, Markfield, Leic's.**

**on**

**SUNDAY 6th September 2009  
11am till 3pm**

***VARIOUS REFRESHMENTS ALL DAY  
ALL PROCEEDS IN AID OF CHARITIES***

***Gifts of books and home produce are welcome  
as are donations to Lions Club Charities***

**ADMISSION £1 at the gate  
( Children under 14 free )**

# Have your say on how £20,000 is spent in your local area

Newtown Linford residents will have the chance to help decide how £20,000 could be used in the local area to improve access to services, support and develop young people and/or make the area safer.

People from Newtown Linford, as well as surrounding villages in the Bradgate, Rothley, Mountsorrel and Birstall Forum area, are invited to come forward with exciting ideas. Community and voluntary groups, businesses and local residents are all being urged to bring suggestions to a special “workshop” in October.

Progress will be reported back via the Leicestershire Community Forums website, [www.leicestershireforums.org](http://www.leicestershireforums.org) and at subsequent Area Forum meetings. Area Forums are a great opportunity for people to find out what is happening on their doorstep, give views, get answers to queries and influence local decision-making

Derk van der Wardt, the County Council's Community Engagement Team Manager, said: "We are offering people a chance to come forward with suggestions and vote for their favourite. We are looking for ideas to improve the local area. These could be new ideas or they could be existing local projects & activities which need a boost. It's your voice, your choice."

This workshop will take place on Monday 26th October 2009. The venue will be Woodhouse Eaves Village Hall, starting at 5.30pm. The workshop is free to attend and will include a finger buffet and refreshments.

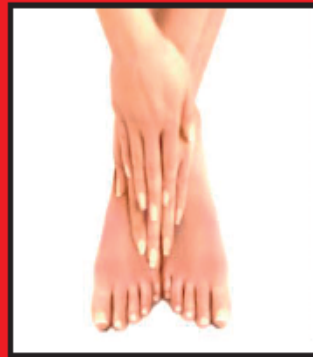
For more information and to book your free place, please call 0116 305 8015 or visit

[www.leicestershireforums.org/your-voice-your-choice.html](http://www.leicestershireforums.org/your-voice-your-choice.html)

## Kathryn Farnham

BA HONS, M.A.R, IIHHT, Dip.GTR, BRCP

**Practitioner of Reflexology  
and Massage Therapy**



**For INTRODUCTORY OFFERS and more  
information on treatments please contact:**

The Little Annex, 61 Anstey Lane,  
Thurcaston, Leicestershire LE7 7JB

Telephone: 07878 933752 Email: [gentle.reflex@gmail.com](mailto:gentle.reflex@gmail.com)



Neighbourhood  
and Home Watch

Looking out for the  
community



The national logo for the Neighbourhood Watch has been changed. I have shown it here with the Newtown part superimposed over it.

Incidents that have occurred in the Village since we last went to print are: Attempted burglary on Bradgate Road. Front double glazed window damaged and tool marks left on the window frame. Break in unsuccessful.

Car on Main Street was jacked up during the night and the wheel nuts removed. Unsuccessful attempt to steal the wheels due to car alarm going off.

Car in Grey Crescent had the front and rear number plates stolen. The Police are not allowed to tell us the numbers so we can circulate them. This might be helpful in stopping the crime for which they will be used. We can only circulate them if the owner tells us themselves.

Car broken into on Main Street by smashing the window. Small amount of cash taken from the glove compartment.

The Police inform me that:-

They have extra plain clothed Police in unmarked cars out to try and combat the attacks on the Village Store. This has now had three break-ins in a very short time.

They are targeting the Beauty spot car parks because 30 cars were broken into during the last year.

The Safer Summer Campaign. – this is a multi agency initiative tackling underage drinking. Blue tooth messages have been transmitted in secondary schools across the county warning of the dangers.

Once again the private Neighbourhood Watch Scheme in Leicestershire has been leaflet dropping in the Villages around. They ask for a membership fee. Please remember membership of the National Neighbourhood Watch to which we belong is free.

continued

A man driving a Ford Focus Estate registration number AG58 PYP has been staying locally in guest houses and leaving without paying. He has also used the guest houses address to start up a business. Keep an eye out for this car and warn any business friends you have since I guess he may have other cons he practices.

The Police are putting on extra plain clothed police in unmarked patrol cars on main arterial routes in and out of villages in order to combat travelling criminals. They will be using their stop and search powers.

The Force's Automatic Number Plate Recognition team will also be working with them to check the identity of the vehicles and owners.

I have been circulating details of a found bird (Parakeet or Cockatiel I am afraid I do not know the difference). The owner has not been found and I think it will stay with its new owners to whom it has become quite attached. So if you visit Seven Oaks Nursery on Groby Lane you may see it. At the moment it is happily living in a poly tunnel with all the plants which presumably it does not eat. After my email circulation I have received all sorts of calls about lost birds. As I write a lady from Shepshed has called about her African Grey Parakeet that has bright red tail feathers. He talks and the family very much miss him. Another lady in Markfield was lucky enough to find her bird out on the tiles of a house near by two days later.

Residents on Bradgate Hill have mentioned very loud gunshots or fireworks recently. Has anyone else heard them and do they bother you or do you know what is causing them. Lydia thinks it may be from a gun club on Groby Lane.

Pam McMorran,  
NHW Co-ordinator



**A & J GARDEN SERVICES**  
**General Garden Maintenance**  
**All types of**  
**garden work undertaken**  
**Hedge and Tree Pruning**  
**Grass Cutting & Trimming**  
**Fencing & Slabbing**  
**Weed Control, Planting, Regular**  
**Maintaining of Borders**  
**FREE ESTIMATE**  
**Please call Andy Gibbins**  
**30 Anstey Lane**  
**Thurcaston LE7 7JA**  
**Telephone 0116 2362158 or**  
**Mobile 07712 660535**



## Carers for Older People

The Leicestershire LINK is organising its first event for carers which will take place in September Older People's month. The event will primarily focus on the concerns of carers of Older People.

There will be speakers from Adult Social Care, Leicestershire County Council, NHS Leicestershire County & Rutland and Leicestershire Partnership Trust.

The Leicestershire LINK is a partnership organisation that is committed to ensuring that people get the best service possible from local Health and Social Care services and is interested to hear from anyone who is experiencing difficulties. The Rural Community Council is a partnership in the LINK.

For more information about the event please contact: Christine Middleton or Shanti Thanki on 0116 2293103 or email [christine@ccp.org.uk](mailto:christine@ccp.org.uk) or [shanti@ccp.org.uk](mailto:shanti@ccp.org.uk)

the new place to wine,  
dine or just spend time

*Enjoy the exquisite settings,  
sumptuous food and fabulous range of  
fine wines, champagnes, spirits & beers  
at The Grey Lady Restaurant & Bar*



For Reservations Call:  
01530 243558

**GREY LADY**  
drink • dine • divine

Sharpley Hill, Newtown Linford, Leicester. LE5 0AH

# DIGIVISION AERIALS



**Confederation of  
Aerial Industries Ltd**  
A quality guaranteed installation at a fair price  
Member C1454

**Freeview**

**sky**

- Digital TV Aerials
- Extra Points
- FM / DAB Aerials
- AV Distribution
- LCD / Plasma TV Wall Mounting Service
- Phone Points
- Storm Damage
- OAP Discount
- Home Networking

**Fully Insured and CRB Checked**

**Faults and Diagnostics - All Work is Meter Tested  
FRIENDLY LOCAL SERVICE**

**TELEPHONE: 0116 224 8045**

**OR MOBILE: 0793 272 4926**

**Email: info@digivisionaerials.co.uk**

## **GLEBE FARM**

Quality Groundwork Specialists  
For both Domestic & Business Customers

**Highways Road Works  
Driveways and Kerbs  
Drainage & Utilities  
Parking Areas & White Lines  
Ground Excavations & Ground  
Clearances  
Landscaping  
Dry Stone Walling**

If there is anything else that you require,  
Please don't hesitate to ask as no job is too big  
or too small

Safety Policy, Risk Assessments & Method  
Statements available on request

Tel: 01530 831770 Mob: 07970 104837  
Glebe Farm, Green Lane, Whitwick LE67 5EE  
Email [glebefarm@glebeservices.com](mailto:glebefarm@glebeservices.com)  
[www.glebeservices.com](http://www.glebeservices.com)



## **NEWTOWN LINFORD PARISH COUNCIL**

**New Parish Councillor:** We are very happy that Philip Baker has been co-opted to the Parish Council. Philip has lived with his wife Lesley in the Parish for over 25 years. They live on Roecliffe Road, and their sons Peter and Richard attended the village Primary School. Phil, as he likes to be known, has recently retired and is looking forward to joining more of the village societies and working as a Parish Councillor. He is a member of the Chartered Institute of Management Accountants, the Chartered Management Institute and has recently completed a post graduate diploma in Strategic Management at the De Montfort University. He will be a great asset to the Parish Council and we welcome him.

**Bob Bown Memorial Field:** We have now heard from Biffa and unfortunately they will not give us a grant for the drainage work on the 5-a-side pitch. The Parish Council will now pay for the work which should be completed soon.

**Conservation Area:** New residents to the village may not know that their property is within the Conservation Area. The Conservation Area covers both sides of the road, starting at 109 Main Street



(uneven numbers) and 130 Main Street (even numbers) and carries on right down Main Street, taking in all dwellings on Grey Crescent, right up to the little roundabout at the junction with Main Street/ Groby Lane/ Bradgate Road. It continues on Bradgate Road with the Vicarage on one side and the bungalow next to the cricket field on the other. The last house in the Conservation Area is 518 Bradgate Road, which is located behind number 520 (the white cottage). There are also five dwellings on Groby Lane (following on the side entrance to the Vicarage) numbers 3, 3A, 5 and 9, and number 6 on the other side of the road. If anybody wants to apply for improvements or any kind of extension, or indeed development, they should consult the Charnwood Borough Council Planning Authority, because different regulations apply to dwellings within the Conservation Area. Our own Village Design Statement which is held by Charnwood gives very clear guidance on requirements within the Conservation Area. If anybody would like to see the Conservation Area Map for Newtown Linford, please let me know.

**Newtown Linford Village Design Statement:** Our VDS became a bona fide Supplementary Planning Document, adopted by Charnwood Borough Council in November 2008. We are going to display it with photographs at the Scarecrow event in the Village Hall on Saturday 26th and Sunday 27th September 2009. Members of the VDS committee will be there to give information.

**You belong to and live within Newtown Linford Parish** even if your postal address says Markfield, Ulverscroft, Woodhouse Eaves, or Cropston. So if your post code is LE67 9PQ, LE67 9PR, LE67 9PS, LE67 9PA, LE12 8TN, LE7 7HQ, LE67 9PL, LE12 8TF, LE12 8JL and LE67 9RE **you are a Newtown Linford resident!**

**Affordable Housing:** You may not get the Magazine in time, but it will be on the Noticeboards: At the Parish Council meeting on Monday 24th August, a Charnwood Officer will talk to us about 'Affordable Housing' and sites within the village which might be suitable. The Parish Council wants to stress that this does not automatically mean that there will be 'affordable housing' in the village.

The Parish Council meeting in September will be on Monday 28th at 7 pm in the Village Hall. Everyone is welcome.

Lydia Knott, Clerk to the Council

T: 01530 242522; E: [lydia.knott@btinternet.com](mailto:lydia.knott@btinternet.com)



PRIVATE AND  
COMMERCIAL

INTERIOR/EXTERIOR

**A.B. SHERRIFF**

Established 1988

**PAINTER  
&  
DECORATOR**

\*

**36 QUEENS PARK WAY  
LEICESTER**

**Telephone: 0116 277 9293**

**Mobile: 07719 366569**

**Peter Henton**

**Domestic Appliance  
Repairs**

**Ex Zanussi Senior Engineer**

**Tel 0116 2896529**

**Mobile 07711 265414**

### **Magazine Contributions**

Can we please have your contributions for the October 2009 issue by **15th September 2009** please. **Send to the Editor, Carole Heubeck, 5 Grey Crescent, Newtown Linford (01530 244790).**

**E-mail [heubecks@googlemail.com](mailto:heubecks@googlemail.com)**

**Please could you send any emails to the above email address. If you do not receive an acknowledgement of your email—please contact Carole, the Editor direct on the above number to check we have received it.**

The opinions expressed by the contributors are not necessarily those of the Editors and they reserve the right to amend, shorten or not print any article or advertisement submitted for publication. Whilst every effort has been made to ensure the accuracy of the information printed in this magazine, and advertisements are accepted in good faith, no liability can be accepted for loss, damage or claim of any kind incurred by the reader

### **Booking of Village Facilities**

**To book the Village Hall -- call Pat Wood on 242251.**

**To book the Sunday School Room— call Casey Pearson on 249259**