

Newtown Linford Magazine

ISSUE NUMBER 145

CONTENTS

Church News	3	18/19
A Night at the Opera	4	
Coffee & Cake	6	
Ramblers	9	
Gardening Club	10	
Brownies	12	
From the Park	15/17	
Newtown Linford Boules	21	
Shuttlewood Clarke Foundation	22	
From the Records	25	
Loughborough Orchestra	30	
Neighbourhood Watch	31	
Parish Council	32	
Bridge	33	
Scarecrows 2017	33	



June 2017



David Allen
For Your
VERMIN CONTROL



RATS, MICE, MOLES, RABBITS, WASPS, ANTS, WOODWORM.

**DO YOU HAVE A PROBLEM WITH ANY OF THESE?
LET ME SOLVE IT FOR YOU!**

10 ASIIBY ROAD, SHEPSHED, LE12 9BS
Telephone: 01509 502664

24 HOUR SERVICE

Consult

WALTER MILES

(Electrical Engineers) LTD

Est. 1928

For All Your Electrical Requirements

**LIGHTING, HEATING, POWER, REPAIRS, RENEWALS
AND MAINTENANCE**

Member of the Electrical Contractors' Association and N.I.C.E.I.C

Office and Works Marshall House, West Street, Glenfield, LEICESTER, LE3 8DT
Telephone 0116 287 2400 Fax 0116 287 252
E-Mail office@waltermiles.co.uk

Horseshoe Cottage Farm

Luxury bed and breakfast accommodation



Approved by the British Hospitality Association
as a member of the Quality Inns Group
since 2001.

For more information of our
Amazing Christmas Service &
availability, contact us on the
Event Calendar.



Rosecliffe Road, Hallgates, Cropston, Leicestershire LE7 7HQ

Tel: + 44(0)116 2350038

Email: linadajee@horseshoecottagefarm.com Website: www.horseshoecottagefarm.com

The Bradgate

Group Parish



June 2017 **Richard Trethewey**

Well, we can't complain about a lack of democracy, can we?

Five weeks after our last chance to vote locally, less than a year since a Referendum and only two years since what are intended to be five-yearly General Elections, we'll be out to vote on June 8. Or at least, I hope we will be. The truth is only two in three of us will. For some of us there's good reason but for many it will come down to two reasons: apathy and indecision. If you don't care, that's fine – voting isn't compulsory – but then you had better not complain when the government does something you disagree with! If you can't decide, then that's harder. Of course we're unlikely to find a perfect solution but it's vitally important that we play our part, otherwise we're ducking the responsibility that is so rightly valued and fought for by others around the world.

Some years ago I came to the conclusion that the party system was flawed – there was no way I was going to agree with absolutely everything that any party stood for. A recent poll proved that policies of left and right both had majority support – some of us are keen on both! It may be you're in that boat.

So how to choose? You can follow recent trends and choose the potential Prime Minister you like the look of and vote for their party. But that's not how our system is supposed to work. Rather we are intended to choose a local representative, someone who will represent their local communities with integrity. Not someone you'll necessarily agree with 100%, but someone you feel you can trust with the responsibility. Politics is essentially about people, not parties.

So find out who our local candidates are. Make time to read their literature or website. Take the opportunity to hear them at hustings. And vote for the one you trust the most. Because politics is about people, not parties.

In the end whoever wins the election can only lead the country for the next five years. Jesus claimed to have permanent and life-transforming authority. He issued a manifesto, you can find it at the beginning of Luke chapter 4. It's worth taking time this month to read that one too, to find

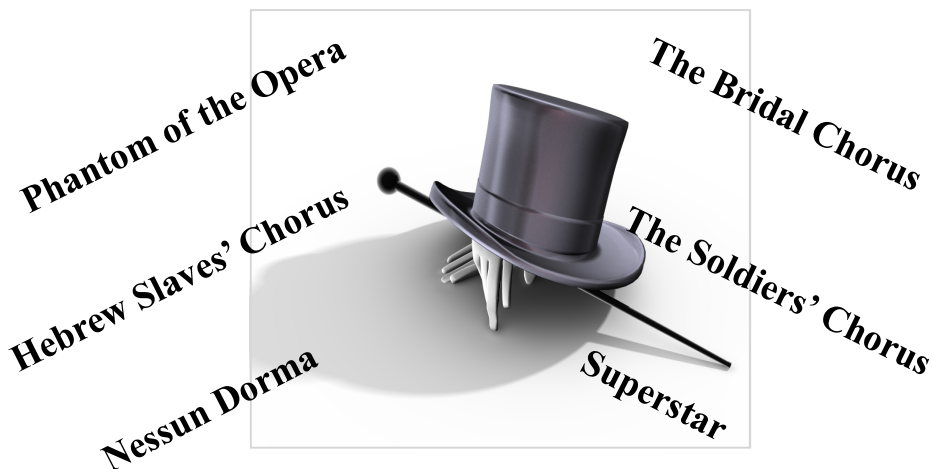
³ out if Jesus is someone you can trust with your life and future.

NEWTOWN LINFORD CHORAL SOCIETY

A NIGHT AT THE OPERA

Musical Director: Sue Ford

Compere: Len Matthews



Village Hall, Newtown Linford

8pm Thursday, 8th June £8 (£5 children)

7.15pm Friday, 9th & Saturday, 10th June

£18 (£9 children) inc Supper

Tickets: 01530 243 822

Licensed Bar ``

Registered Charity No. 1079843

VILLAGE DIARY

June

8/10th Night at the Opera (Choral Society)
13th Boules
17th Ramblers
22nd Parish Council
27th Gardening Club

Regular events

Monday afternoon	Mature Movers fitness class V. Hall
Mondays 8pm at the Church	Bell Ringing
4th Tuesday of the month	Gardening Club
3rd Wednesday of the month	Ladies Luncheon Club
Thursdays 11.15	Coffee Mornings for all, Village Hall
Thursdays 6.30	Brownies, Sunday School Rooms
3rd Thursday	Gentlemen's Lunch Club
Boules	Phone 01530 245373 for more info

HYPNOTHERAPY

MARGARET GEE DAH Hyp

Confidential, professional and friendly help with

Stress Management Anxiety and Worry

Fears and Phobias

Relationship Issues Stop Smoking

Lack of Confidence and Self Esteem

Weight and Body Image Problems

And more.....

Charnwood House, 516 Bradgate Road
Newtown Linford, LE6 0HB

Please call for more information or to book an appointment

01530 242958

Coffee & Cake @ Newtown Linford Village Hall

Thursday Morning 11.15am - Free

All Welcome - All Ages



Coffee and Cake Duty Rota

June

1st	Ruth Goddard & Ann Smith	245316/242639
8th	-Judy Rowe, Clare Attridge, R Guppy, Natasha	243989
15th	- Mary, Wes & Sarah Raynor	243042
	(Men's bake off women to judge!)	
22nd	- Lesley Cook, Chris A, & Gay Redstone	242214/242432/
29th	- Sue Pritchard & Teresa Calvert	243119/482802

July

6th	- Amanda Scunthorpe & Vicky Lightfoot	242445/07779123952
13th	- Jo & Claire Costello	249613
20th	- Janet & David Brunton	242662
27th	- Betty McChrystal, Sue Howard & Gillian Bates	244363/245373/224491

August

3rd	- Sue Pritchard & Teresa Calvert	243119/482802
10th	- Felicity Manning & Glennis Saunders	245298/249384
17th	- Carolyn Turner & Charlotte Jackson	249173
24th	- Casey Pearson & Jenny Cole	249259
31st	- Ann Scrine, Steve & Dave Pratt	242301/589031

Please swap with someone else if you are unable to do your duty. Pass on the hall key to the next people on duty.

**An opportunity everyone to catch up on village news and activities
and to meet your fellow neighbours**

A warm welcome for everyone at



THE LINFORD

66 Main Street, Newtown Linford
Tel: 01530 244012
thelinford.co.uk



Free WiFi



Pool Table



Free Function Room Hire*



Quiz every Wednesday



Guest Beers

**When booked with bar*



Ample parking

**£1 off all draught beers
Fridays between 7 and 9.30pm**

sky SPORTS

NOW SELLING CRAFT BEER

BT Sport

Dogs with well behaved owners welcome



New landscaped
garden



Dogs welcome inside

Log burning stoves



Under new ownership

Homemade cakes
& scones

All-day breakfast
& lunch menu



**We're open
9am – 4.30pm
Monday – Sunday**

The Old Post Office Tea Room & Store

550 Bradgate Road, Newtown Linford, Leicestershire, LE6 0BH
Tel: 01530 242709



/OldPostOfficeTearoomBradgateRd



Have You Heard About The Grey Lady Restaurant?...

Nestled in Newtown Linford in the heart of Charnwood Forest overlooking Bradgate Park, yet less than 20 minutes from Leicester. Set in three acres with an enviable outside drinking and dining area overlooking the forest.

Fixed Price Lunch Menu

12-2pm Mon-Sat

2 Courses for £15

3 Courses £18.50



Opening Times

Mon – Sat Lunch 12pm-2pm

Mon – Sat Eve 6pm-9pm

Sunday 12pm-3.30pm

The Grey Lady, Sharpley Hill, Newtown Linford, Leicester,
LE60AH

Tel: 01530 243558
info@the-grey-lady.co.uk

<http://www.the-grey-lady.co.uk/>

Introducing...



Our NEW 'Steak, Wine & Candlelight'
evening every Friday from 6pm at
The Grey Lady Kitchen & Deli

544 Bradgate Road
Newtown Linford
Leicester
LE6 0HB
01530 245801



Call us on
01530 245801

Indulge in 2 yummy steaks, chips and grilled mushrooms,
2 glasses of wine for only £25! Upgrade to the full bottle
for only £5 extra per couple

Village Ramblers



The May walk was around Cossington Meadows. 12 ramblers including one child which was lovely to see, set off from near Cossington Church. Rain threatened when we started, but fortunately it didn't materialise and eventually the sun came out. The hawthorn blossom was beautiful and there were a variety of birds including herons, a ring plover, swallows, swans and many more. We stopped at Sibley Mill weir for a photo and continued walking beside the river Soar where we saw families of ducklings. We eventually reached Syston Road which we walked for a very short distance before returning to Cossington Meadows and finally the Church.

The next walk will be on 17th June, a week later than normal, to avoid a clash with the Choral Society concert. It will be a longer walk than normal so we will meet at 11.00 a.m. outside the Village Hall. The walk will be around Calke Abbey. Leader: John Castle.

Well-behaved dogs only are welcome. To be under the close supervision of the owner, and to be on the lead where there is livestock or nesting birds. Please check with the leader that dogs are allowed across any access land.

9 *Disclaimer. Members are reminded that participation in walks is at their own risk, and that the leader(s) accepts no liability for any loss or injury, however caused.*

Newtown Linford Gardening Club

Our Annual General Meeting was well attended last month and we were able to reflect on another successful year with interesting speakers, social events and visits. Our accounts look very healthy and we are able to continue to attract high quality speakers to our Village.

We welcomed Andy de Wet from Coalville as our speaker who talked to us about caring for our lawns. With a background of managing the greens and fairways of prestigious Golf Clubs, his knowledge about grass was extensive and we learnt a great deal about this important but sometimes neglected part of our garden.

In June we have a visit from one of Leicester's great characters. Ady Damon is the regular gardening expert on Radio Leicester and his talks are always entertaining. He brings a lot of different plants to the Hall, tells us how to get the best out of them and then invite us to buy them and take them away for our own gardens. Some of our members have heard him speak before and we have enjoyed listening to him immensely.

Our summer events follow the traditional lines. We hold our Garden Party in July, enjoying a two course buffet meal washed down with large quantities of Pimms and other summer drinks. Our August trip is to a very interesting garden near Grantham called the Easton Walled Garden. Perhaps not as well-known as other gardens but it is a hidden gem well worth visiting.



We have welcomed a large number of new members this year and will be pleased if others want to join us. If you are interested in our activities just contact the secretary (tel. 242452 or e-mail 32couling@gmail.com (note new email address), or come to one of our meetings to see how you like it before making a commitment (£2 for visitors). Alternatively give us a ring and ask for a copy of our programme for the coming year and we will be pleased to send one to you.

Charnwood...we have you covered



SELLING?

- Accompanied viewings
- Open 7 days a week
- Free KPC and Floorplan
- Specialists in probate valuations
- Vendor care and sales progression negotiator
- Weekly regular updates

LETTING?

- Full Management for 8% plus VAT.
- All properties advertised with a Floor Plan, no additional charges.
- We don't add a "Service Charge" to Contractor/Third Party Invoices, you get charged what the contractor charges us.
- We do not charge a "Set Up", "Tenant Find" or "Renewal" fee under our Full Management Service.

ARRANGE YOUR FREE SALES/LETTINGS VALUATION BY CALLING

Anstey Office
15 The Nook, Anstey LE17 7AZ

0116 235 3009

Barrow upon Soar office
65 High Street, Barrow upon Soar LE12 8PY

01509 274474

Brownies

Earlier this month Girlguiding's fencing instruction came to give the Brownies a taste of duelling. The girls could not wait to get their helmets on, foil in their hand and start practicing the various moves.



Last month Sarah Thrower from the Village came and kindly took the Brownies for their First Aid Badge.



Half the night was taken up with the girls telling Sarah all about their medical experiences!!

At the end of the evening the girls did enjoy trying out the different First Aid functions on each other that they had been taught



THE
BRADGATE
NEWTOWN LINFORD

**CELEBRATING THIS YEAR
PLANNING A PARTY
PLANNING AN INFORMAL
CONFERENCE/WORKSHOP**

Look no further than the Bradgate

**FROM CHILDREN'S PIZZA PARTIES TO
ADULT RIB SHACK BBQ'S
GROUP MEETINGS TO
BUSINESS WORKSHOPS**

**ALL OCCASIONS TAILORED TO YOUR
PERSONAL REQUIREMENTS**

**THE BRADGATE WORKING WITH YOU TO MAKE
YOUR SPECIAL DAY THE SUCCESS YOU DESERVE**

Within walking distance from Bradgate Park

WWW.THEBRADGATE.COM

EMAIL: CONTACT@THEBRADGATE.COM

TEL: 01530 242239

COVERING *Martin Page*
YOUR LOCAL
Tree Surgeon

The Newtown Linford Area

Have you considered your trees may need some maintenance from time to time. Are your trees maybe too tall blocking light, unsafe or untidy? Or maybe you need to remove that stubborn stump. Do your hedges, Conifers or shrubs need trimming. With 30 years of experience working with trees in your area, I would be pleased to offer you free advise and a free quotation.

charnwood

I also sell high quality firewood logs

call me now on
01530 251312

Fully insured
 Local family business
 Clean & tidy service

Constantly Recommended






PEST CONTROL
 DOMESTIC • COMMERCIAL • INDUSTRIAL

Guaranteed Service
No Add On Charges

Wasps * Fleas * Ants Rodents
 Bird Control * Fly Killers * Fly Screens *
 Pet Screens * Feminine Hygiene

FOR A FAST, RELIABLE RESPONSE
CALL FREE ON
0116 234 0078

target
 making a pest-free environment

www.targetpestcontrol.co.uk | info@targetpestcontrol.co.uk







From the Park



Sunshine

“There really is no such as bad weather” said John Ruskin, “only different kinds of good weather”. On that basis, May really has had something for everyone: several days of heavy rain were followed by glorious sunshine, just in time for our Emergency Services Day on the 21st.

Whenever we have a sunny weekend following a period of wet weather, you can almost feel the release of children’s pent-up energy as they come through the Park gates.

As we all know, with the summer visitors come the problems with parking in the Village. We now liaise with Charnwood Borough Council over our events and there were Street Wardens on patrol on Emergency Services Day, which this year coincided with the Leicestershire Yeomanry Association’s Frezenberg Memorial Service.

The County Council will be publishing proposals in June to extend the double yellow lines on both sides of Bradgate Road and to impose new parking restrictions in Grey Crescent. The Council will also be erecting additional brown signs later this year to highlight the location of Hunts Hill car park to give people an alternative to parking in the village when the main car park is full. All this work is being paid for by the Bradgate Park Trust.

Having installed “crocodile teeth” to stop cars accessing Newtown Linford car park when the gate is shut, this year we will be carrying out similar work to secure the other two car parks and also the car parks at Swithland Wood in order to remove opportunities for antisocial behaviour after dark.

The advent of the summer weather has seen the resurgence of two perennial problems: fire and trespass. Despite the widespread publicity around the recent fire, we still see too many instances of irresponsible behaviour involving fire. In one recent instance, someone had taken stones from a dry-stone wall to put around a fire, which they then left burning. The other issue is people entering the flooded quarry in Swithland Wood to swim. Apart from the fact that this involves climbing over or breaking down the security fence, there is a very good reason why the fence is there and is liberally adorned with “Danger: Keep Out” notices: the quarry is 160 feet deep with sheer sides and the water is extremely cold. Whenever we catch people in there they are removed and

the police informed. Tragically, it may take our recovering a body to get the message across.

If residents see examples of these or other instances of antisocial behaviour, please report them to us using the following numbers:

Monday to Friday 9am to 5pm: **0116 236 2713**

Weekends during daylight hours and 7.45-9am and 5pm to dusk weekdays: **07740 406 661**

All other times: **07740 406662** or **07740 406 663**

If a crime is in progress or people are in danger, then please call 999.

On a more positive note, we have a number of events coming up this summer in the ruins of Bradgate House:

Sunday 25th June – Wind in the Willows

Sunday 30th June – Pride & Prejudice

Saturday 19th August – The Bradgate Proms

Sunday 20th August – Acoustic and Folk Music Picnic

Tickets for all these events these are available at the Visitor Centre and the Conservatory Tearoom as well as online at www.seetickets.com (search for “Bradgate Park”). Regulars at our theatre evenings will be pleased to hear that Chapterhouse Theatre Company will be bringing an improved sound system this year, so the actors’ words are no longer in danger of being carried away on the breeze.



We also have a range of smaller events including the “Queen of Bradgate” season in July to mark the Nine Days when Lady Jane Grey was Queen of England. The week’s events include guided tours of the ruins (one of which will be led by yours truly and include a talk and sup 16 per), “Meet the Executioner” when our costumed executioner will tell

MARTIN ALLEN

**FLOORING &
FRENCH
POLISHING**

**YOUR LOCAL
FLOORING SPECIALIST.**

All timber floors laid

**All existing timber floors sanded
and refinished**

Any colour or finish

**Free quotations
call Martin.
0116 2165107**

SYKES JEWELLERS

**WATCH, CLOCK &
JEWELLERY REPAIRS**

**WATCH BATTERIES AND
STRAPS FITTED WHILE
YOU WAIT**

**8 BRADGATE ROAD, ANSTEY
TEL: 0116 236 2510
sykesjewellers.co.uk**



you all about, and demonstrate, the tools of his gruesome trade, and a Historical Comedy Night in the Conservatory Tearoom. The season will culminate with a ticket-only Service of Remembrance in the Bradgate House Chapel, led by Rev Richard Trethewey in accordance with the 1552 Prayer Book that Jane would have been familiar with. Details of all these events can be found on our website, on our Facebook page or in printed form from the Visitor Centre or Conservatory Tearoom.

The development of our Memorial Wood is progressing well. This project, made possible with the generous support of Leicestershire Freemasons to commemorate the 300th anniversary of English Freemasonry, will provide an area to remember loved ones with a cast bronze oak leaf or simply somewhere to sit and reflect. Details of the memorial scheme will be published later in the summer and the Memorial Wood will be officially opened in October.

I look forward to seeing you on the Park at one of our events or enjoying the peace and quiet of a summer's evening.

Peter Tyldesley

NEWTOWN LINFORD SERVICES June 2017

DATE	GLENFIELD	NEWTOWN LINFORD
4th June Pentecost	8.30am Holy Communion (RT)	
	10.15am Worship as One (RT)	10.30am Holy Communion (JW)
	6.30pm Evensong (BH)	
11th June Trinity		8.00am Holy Communion (RT)
	10.15am Holy Communion (RT/BH)	10.30am Morning Prayer (JW)
	6.30pm Compline (RT)	
18th June 1st Sunday of Trinity	8.30am Holy Communion (RT)	
	10.15am Service of the World (GS)	10.30am Holy Communion (RT)
	4.00pm Messy Church (team)	
25th June 2nd Sunday of Trinity		8.00am Holy Communion (RT)
	10.15am Holy Communion (PH)	10.30am All Age Service (RT)
	6.30pm Holy Communion (PH)	

MIDWEEK COMMUNION SERVICES—June 2017

GLENFIELD	Wed	10.45am	7th	14th	21st	28th
NEWTOWN LINFORD	Thur	10.00am	8th			



CHURCH REGISTER **NEWTOWN LINFORD**

Weddings

None

Baptisms

Funerals

*17th May ~ Susan Sturgess, formerly of Benscliffe Road,
Ulverscroft*

We extend our sympathy and prayers to the family and friends, and pray that they may find peace through faith in Jesus Christ our Lord.



Website: www.allsaintsnewtownlinford.org.uk

Church Contact Details

Richard Trethewey
Rector of St Peter's, Glenfield, and All Saints, Newtown Linford
0116 287 1604
Email: richard@stpetersandallsaints.org.uk

Church Wardens:

Clive Rowe & Jane Woolmer

Parish Office: Bekki Williamson (9am - 11am weekdays)
0116 239 3768 Email: ; office@bradgatechurches.org.uk

Please note new email address for the office

Regular Events - Bell ringer's practice: Monday 8pm

E.W. Goddard & Sons

(Established 1970)

**QUALIFIED PLUMBERS
Bathroom and Tiling
Specialists**

**All Building Work
and Renovation**

305 Markfield Lane
Markfield LE67 9PR

Telephone

**01530 245316 or 0116 2311672
07961 319908 or 07961 319907**

Peter Henton

**Domestic Appliance
Repairs**

Ex Zanussi Senior Engineer

Tel 0116 2896529

Mobile

07711 265414



**Professional carpet &
upholstery cleaning and repair
services**

- ◆ Curtains cleaned in situ
- ◆ Expert spot & stain removal
- ◆ Guaranteed 5 year anti-stain policy
- ◆ Hand finishing of swags & tails
- ◆ Mattresses deep cleaned
- ◆ Pest control, unpleasant or destructive pests removed

Telephone 0800 328 2927

www.safeclean.co.uk

**PRIVATE AND
COMMERCIAL**

INTERIOR / EXTERIOR

A.B. SHERRIFF

Established 1988

**PAINTER &
DECORATOR**

**42 BRADGATE DRIVE
WIGSTON, LEICESTER**

Telephone 0116 288 1048

Mobile: 07719 366 569

NEWTOWN LINFORD BOULES



Welcome to fifteenth season

2017 SEASON

Tuesday 13th June

Tuesday 11th July

Tuesday 8th August

Tuesday 5th September

Meet outside the Village Hall at 6.20pm (September 6.00pm). All matches to be played at The Blue Bell Inn, Hoby, phone number 01664 434247.

In the event of rain the skittle alley has been booked for us.

CONTACT. DICK HOWARD 01530 245373

Please confirm on the previous day (Monday) if you are attending so that I can book your meal.

All welcome, no previous experience necessary.

THE BOULES SEASON HAS BEGUN

In spite of a dire weather forecast, rain all day, the evening cleared up and we played our first game of boules this year. As usual we were at the Blue Bell at Hoby.

I was reminded of school children being let out into the playground as the volume of noise, excitement and enthusiasm built up for the first few ends. In total we had 15 players, our number swelled as we welcomed three new players, Colin Bushell (owner of the Old Post Office), Clive Rowe, and Andrew Pearson, who all played their part in a successful evening.

It was no surprise that once again Brian Anderson was the winner of the Brian Chell Challenge Cup beating Toby Manning in the playoff.

Boule Facts.

A competition boule is 80 cm in diameter and weighs 800 gms, but there is a wide range of diameters and weights from 70 – 80 cm and 600 -800 gms. Typically a boule is manufactured from carbon steel, stainless steel, or bronze, and can be in a variety of colours.

Our next match is on Tuesday 13th June, meet at the Village Hall at 6.20pm. If you are interested in joining in the rules are very simple, you will be very welcome.



You are
invited to

Shuttlewood Clarke Foundation

Activity Centre open day

Wednesday 14th June 2017

11.00am – 2.00pm

After many months of planning and development the Uiverscroft Activity Centre is now complete. This fantastic project was made possible thanks to the generous efforts of our supporters and visitors.

We sincerely hope you will be able to join us for this special open day, the opportunity to view the fabulous new Centre and learn a little more about the Foundation.

You are welcome to drop in anytime between 11.00am and 2.00pm. We look forward to seeing you there!

Telephone :- 01530 244914

hello@shuttlewood-clarke.org

www.shuttlewood-clarke.org

Registered Charity 803525 'Supporting the elderly, adults with disabilities and young people through wellbeing activities, outdoor education and inspiring support services'



Wedding of Thomas Croft and Naomi Martin 8th April 2017

Jan Croft sent me a lovely picture of her son Thomas Croft who recently married Naomi Martin at Breadsall Priory on 8th April 2017. Can we wish them a long and happy future life together.

Jan's friend Carol Wenger came to visit for the wedding, Carol is an American nursing friend she met whilst working as a health worker in Belize, Central America 35 years ago.

Newtown Linford Bell Ringers did their bit to help give Carol a memorable visit. Carol has visited the Village before but was last here in Newtown Linford 10 years ago. □ .



Broughtons Traditional Lighting & Hardware

Since 1888



Meretti Luce 



NEW for 2016 - Italian Lighting & English Door Furniture



Showroom & Coffee Lounge

Mon - Sat 9am - 5pm

Sundays 10am - 4pm

The Old Cinema Cropston Road Anstey Leicestershire LE7 7BP

0116 232 3175

www.broughtons.com sales@broughtons.com

Cook's Farm Shop & Country Supplies

Markfield Lane, Newtown Linford, Leics, LE6 0AB

01530 242214 - www.cooksfarmshop.co.uk



Quality Meats, Potatoes, Fresh Fruit & Veg, Bread, Milk, Eggs & Cakes

Full range of: Animal Feeds for Farm, Equine & Domestic Animals.

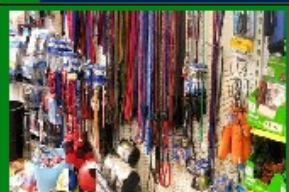
Dog foods including: Arden Grange - Burns - Millies Wolfheart - Beta - Chudeys - Eukanuba - Iams - Skinners - Masters James Wellbeloved - Masters - plus LOTS more!!

Just ask us



Collars, Leads, Beds and Coats as well as -
Wormers for: Dogs, Cats, Horses & Poultry.
Frontline flea treatment for Dogs & cats.

Frozen Fresh, Raw Dog Meat - Singles or Full Boxes available



**Grass Seed
Premium Compost
Fertiliser
Compost**



Tree Stakes - Fencing Timber - Stakes - Rails - Posts - Panel Fencing - Gates & Gate Posts - Stock Wire -
Wire Netting - Welded Mesh - Rolls of Barbed Wire - Electric fencing - Vermin Control Products - Wheelbarrows -
Brushes - Buckets - Bins & General Small Holding Supplies

Open: Monday to Friday 9am to 5.30pm - Saturday 9am to 5pm - Sunday 10am - 1pm

From the Records

Janet Neaverson, who has written this column for many years and now supplies the Editor with one of the many scrapbooks that the WI kept on the Village, and ideas for the latest article is unfortunately ill in hospital at the moment. Can we send her best wishes from us all and wish her a speedy recovery

Without guidance this month and only having the one scrapbook, I thought I would pick out the article on snakes in Bradgate Park (not something that I would care to get close to).

In 2004 the Park posted their usual notice about TICKS but added information about adders and what to do if bitten. The adder is quite common in Bradgate Park and whilst not an aggressive creature is venomous and does not like being disturbed.

In the records at Whitsuntide in May 1959 a boy scout had been bitten. It took a while for serum to be obtained but the Leicester Mercury were pleased to announce the outcome had been good.

In September 1996 - it made headlines in the Mercury "Boy bitten by Adder in Park". Only in Leicestershire would everyone know which park this referred to! He had unfortunately tried to pick up the adder as it basked on a rock in Bradgate Park. The adder objected and he was rushed to A&E at the Leicester Royal Infirmary. London Zoo confirmed the description and Guys Hospital London Poison Centre was contacted for expert advice on the use of the snake bite treatment anti-venom. The anti-venom is toxic and care has to be taken when it is administered. He was kept in and the final outcome was good.

Most adders have a distinct dark zigzag that runs down the length of their bodies, as well as an inverted "V" shape on their neck. Male adders are usually white or pale grey with a black zigzag, while the females are a pale brown colour, with a darker brown zigzag. In some cases, ad-



Stephen Holmes Garden Services

Lawns, borders, hedges, weed-
ing, pruning, digging and any
other general garden jobs

Interior and exterior painting and
various other jobs around the home
undertaken:

- Painting fences and sheds
- Moss and weeds removed from
driveways, patios and footpaths
- Plants and compost delivery
- Gardens watered whilst away on
holiday

Call Stephen Holmes
on 07944 674813
or 01530 831307

Need a Helping Hand?

Fed up of trying to fit everything in, and work?
Or is it all becoming a burden?

We provide a friendly & efficient tailored service

The Housewives



“Not just a cleaning company.”

- Domestic, Commercial, Rental property & Communal area cleans
- Oven Cleans from £45
- All cleaning products included
- Bed Linen changed & laundered
- Ironing (collection & delivery service included)
- Fully insured

Call Lisa on 0116 304 0607 or 0753 931 6717

adders can be entirely black – which can lead them to being mistaken for others.

Adults tend to grow to a total length of 25 to 35 inches (including the tail). Mr Harrison, the Land Agent at the time for Bradgate Park Trust, stated that adders were relatively common in the Charnwood area. His advice “if you see an adder - DON'T TOUCH”.

On an aside to this - years ago my husband returned home late at night to see a long stick on the driveway. He put the car in the garage first and then went back to pick up the stick to remove off the drive. The stick had disappeared - we however presume it was a slow worm rather than a adder!



Simon Shuttlewood

quality upholstery

Expert Re-Upholstery

- Free estimates & advice

Repairs

- New cushions, springs etc

New suites, sofas & chairs,

- All made in our own workshops



Please phone or visit our shop & showroom
with easy parking

7 Edward Street, Anstey, Leicester LE7 7DP
Telephone 0116 2340350



Shuttlewood Clarke Foundation

Tuesday 27th June - Car Boot Sale Grab a bargain at the SCF fund-raising car boot sale

Entry to this event is £5.00 per car and £7.00 per van. Trailers admitted at £2.00 extra. Vehicle access will be from 8.30am onwards.

Entrance to the Sale field 50 pence per person. Please be advised that management reserve the right to refuse entry and no new items or traders will be permitted.

For more information contact. Helen Baxter on 01530 244914
Ulverscroft Grange, Whitwick Road, Ulverscroft, Leicester, LE67 9QB
10.00am – 2.00pm 50p

Paint Wizard

All Types of Vehicle Body Repairs

Panel Resprays from £165

Scratch Removal from £45

Stone Chip Repair from £45

Windscreen Repair from £35

Colour Restoration From £65

Alloy Wheel Refurbishing from £45

Machine Polishing & Glaze from £100

Colour Code Bumper Resprays from £165

Colour Code Wing Mirror Resprays from £45

Free Collection & Delivery Service Available

All prices are plus VAT charged at the prevailing rate

07850 456696

Proprietor Paul Beaver, Grey Crescent, Newtown Linford

Further to the From the Records article - I thought I would check the Bradgate Trust Website on Ticks and Adders.

Ticks are tiny insect-like creatures found on vegetation and animals in grassy, woodland, heath and moorland areas. They attach themselves to passing animals and people and feed by biting through the skin and sucking blood. Ticks (at larva, nymph and adult stage) feed on most animals including sheep, cattle, deer, dogs, vermin and birds. If a tick is infected with Lyme disease, it can transmit the bacteria to another animal.

When in long grass, bracken, woodland, marshy or brushy areas or elsewhere in the countryside, take sensible precautions to reduce the risk of being bitten by ticks:

- Keep your skin covered.
- Inspect skin and clothing and that of children for ticks after each visit to the countryside. Ticks often do not attach themselves to the skin for several hours and usually, even if infected, do not pass on any bacteria unless they have been on the host for more than 36 hours.
- Remove ticks as soon as you can.
- Insect repellents sprayed onto your clothing (or limbs where it is not practicable to cover up) may be useful.
- Check your pets regularly for ticks. Insect repellent sprays or collars may help.
- Walk in the middle of paths and trails. Do not follow animal tracks.
- Brush off clothing before entering the house.

Symptoms of Lyme Disease normally start between a few days and a month or so after being bitten by an infected tick. The first sign is often a red blotch around the site of the bite. It does not itch. This rash can spread to form a large circle. Flu-like symptoms may occur either before the skin rash or about the same time. Headache and chills, tiredness and joint aches may last several weeks without treatment. Fever is more common in children

How to remove the Tick

Don't panic but remove the tick as soon as possible. Don't rush. If you pull the tick's body you may crush it.

One of the best ways to remove a tick is to grasp the tick firmly, using tweezers or your finger nails, as close to the skin as possible, and then pull it out slowly and gently with a twisting motion. Remember most tick bites do not produce an infection. Clean the wound with antiseptic.

If you have been bitten:

If any of the symptoms described here develop in the days or weeks following the bite, then **SEE YOUR DOCTOR STRAIGHT AWAY.**

Early treatment of the disease with antibiotics is effective against short-term symptoms and may prevent or lessen the seriousness of any long-term complications. The earlier it is diagnosed, the easier it is to treat.

KEITH SMITH (ANSTEY) LTD

EURONICS

6 STADON ROAD ANSTEY LE7 7AY - TEL: 0114 2342395 - sales@keithsmithltd.co.uk

FAST FREE LOCAL DELIVERY



BOSCH KGN34VW24G

Fridge Freezer

- ✓ Frost Free
- ✓ 191/127 Ltrs
- ✓ 3 Clear Drawers
- ✓ A+ Rated
- ✓ H185 x W60 x D65

2 years
EUROPEAN
MANUFACTURE

Now
Only **£429.99**



BOSCH WAB28162GB

Washing Machine

- ✓ 1400rpm Spin Speed
- ✓ 6kg Load Capacity
- ✓ A+++AB Rated
- ✓ Express Wash
- ✓ 15 Programmes

2 years
EUROPEAN
MANUFACTURE

Now
Only **£299.99**



Blomberg LWF27441

Washing Machine

- ✓ 1400rpm Spin Speed
- ✓ 7Kg Load Capacity
- ✓ Quick Full Load
- ✓ 16 Programmes
- ✓ A+++AB Rated

3 year
EUROPEAN
MANUFACTURE

Now
Only **£329.99**



BEKO WMC1282W

Washing Machine

- ✓ 1200rpm Spin Speed
- ✓ 8Kg Load Capacity
- ✓ Quick Wash
- ✓ 15 Programmes
- ✓ A+++AB Rated

Now
Only **£249.99**



BOSCH SMS50T02GB

Dishwasher

- ✓ 12 Place Settings
- ✓ 5 Programmes
- ✓ Half Load
- ✓ Noise Level 50db
- ✓ A+AA Rated

2 years
EUROPEAN
MANUFACTURE

Now
Only **£299.99**



NEFF B12S53N3GB

Single Electric Oven

- ✓ Multifunction Cooking
- ✓ A-20% Rated
- ✓ 67 litre Main Oven
- ✓ CircoTherm Fan
- ✓ H59.5 x W59.5 x D55

Now
Only **£369.99**

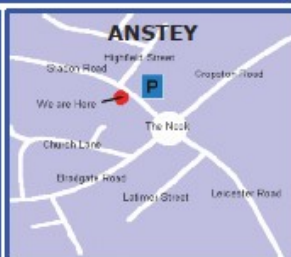
Fitted Kitchens

We are pleased to announce that we are now agents for A.W.E Kitchens and Bedrooms Who specialise in Bespoke made to measure kitchen & bedroom furniture

Please call in for further details

Internet Pricing with Personal Service

"Ask About our
Same Day/Next Day
Installation
and Removal Service"



MAKE A DATE WITH THE LOUGHBOROUGH ORCHESTRA SUMMER CONCERT!

Last time Yulia Northridge was guest soloist with the Loughborough Orchestra, she wowed the audience with Bruch's Violin Concerto, so the Orchestra members are really looking forward to her second visit. This time she will play the popular Mendelssohn Violin Concerto with its glorious slow movement and exciting outer movements! If you want to be sure of your place in the audience, it is advisable to buy a ticket in advance.

Starting the concert is the lively Marche Slav by Tchaikovsky. This piece, which includes melodies from two Serbian songs, the Russian National Anthem and the 1812 Overture, was commissioned by the Russian Musical Society to help the Red Cross in their work with Serbian soldiers in a war against Turkey. If you don't think you've heard this before, you will certainly recognise some of its melody lines.

The second half of the concert features Sibelius Symphony no. 2. Although Sibelius spent time in Italy whilst forming ideas for this work, it still resonates with a characteristic sound of the composer's Nordic - inspired music. Musical images of Finland permeate the symphony, with some beautiful themes surfacing in its tuneful lines of music.

The concert will be at Emmanuel Church, Forest Rd. on Saturday 17th June 2017, starting at 7.30 p.m.

Tickets are £8.00, Concessions £7.00, Children under 16 £3.00 and are available from the orchestra website



D T Electrical

Emergency
Call Out



All domestic electrical
work undertaken
Fault finding

Contact Davy on

07767 862378

electricaldt@yahoo.co.uk

8 Witherdell, Anstey Heights
Leicester LE4 0PR



Newtown Linford Neighbourhood Watch - A member of the Parish Council



Leicestershire Police are urging dog owners to take responsibility for their animals and keep their dogs on a lead when around livestock.

Sergeant Nick Woodrow, force lead for Rural Crime said: “Every year we get a number of reports of livestock worrying which can have serious effects on the animal including stress, injury, abortion and death. “It can also have a devastating impact on the owner with veterinary cost or loss of income, never mind the upset of seeing their animal suffer.” “To stop such incidents occurring, we are advising dog owners to keep their dogs on a lead and under control when walking through fields of livestock, and to always stick to the public rights of way.”

Livestock worrying is a criminal offence and can result in a £1000 fine. The Animals Act entitles the owners of the livestock, the land owner, or those acting on their behalf, to shoot any dog if they believe it is the only reasonable way of stopping it worry livestock. The police must be notified within 48 hours if this action is taken.

Sergeant Woodrow added: “Livestock worrying doesn’t just occur if a dog attacks a sheep, but can also include chasing livestock, or not being on a lead in a field or enclosure in which animals are kept. It is the owner’s responsibility to keep their dog under control.” Although sheep are usually the target for livestock worrying, the law also covers cattle, goats, pigs, horses, donkeys, mules, chickens, turkeys, geese and ducks. Please report incidents of livestock worrying on 101.

I have not heard from County Hall Speed Watch Team to see if we would like the gun this year so assume they have discontinued this service. As we had very few volunteers last year I shall not be chasing them. The volunteers we have had deserve a break.

Pam McMorrان.....NHW Coordinator
pamriverlyn@msn.com –
tel: 01530 242201





Newtown Linford Parish Council

Serving the people of Newtown Linford

School children's request for Zebra crossing. A reply has been received from County Hall explaining the criteria for Zebra Crossings. The Chair and the Clerk will arrange to go to the School to talk to the children and explain how these things work.

Planning – The Parish Council continues to support Anstey Parish Council in respect of two planning applications – one being land adjacent to 293 Bradgate Road and one a large development on Cropston Road which went to appeal and has now been granted. Here in Newtown Linford the application for land adjacent to 57 Main Street has gone to appeal to be dealt with by letter rather than a hearing.

Bob Bown Playing Field – The new football nets have now arrived. We just need to work out how to fit them now.

Cemetery – The new entrance has now been constructed but will not be in use until the SLOW sign has been painted on the road. New hedging has been planted both sides of the double gate and the new hand gate. The old entrance will become the exit. Young hedging has also been planted round the new boundary. The extended driveway should be surfaced any day now.

Village Hall – Whilst the Hall is managed by its own Committee the Parish Council pays the rent to Everards Brewery and is also paying off the Public Works Loan in stages plus interest. Last year saw the annual rent review with Everards requesting a substantial increase in rent. Eventually after a meeting between the parties a much lower sum has been agreed for the next four years. This will now be paid and backdated to last year.

Bradgate Park Trust – The Trust has published its draft strategy which can be found in the news on the front page of Parish Council website or directly on their own site. It is 27 pages long but the Councillors would like all residents to read it. They would be pleased to have all your com-

ments so that they can be compiled for future discussions. The Councilors have already submitted their comments and these have been collated by the Chairman and submitted to the Trust.

Have you looked at the website recently?
www.newtownlinford.org.uk

Pam McMorrان – Parish Clerk and Registrar for Burials. 01530 242201
pamriverlyn@msn.com

The next Parish Council meeting is on Monday 22nd June, starting at 7.15pm. Please note this is a new time. We meet in the Small Hall at the Village Hall.

BRIDGE

The Charnwood Bridge Group play relaxed social Duplicate Bridge on Thursday eves. at 9 Main St. and would welcome one or two new members.



Pairs or singles and any ability welcome.
Please contact Wes or Mary Raynor, tel: 243042 for more info.



IDC Home Maintenance

Painter Decorator and Property Maintenance

NO JOB TOO SMALL

**From changing a light bulb to complete house re-decoration.
For all the jobs you need to do but simply don't have time.**

For a free quotation please call Ian on:

01530 245461 or 07885 541428

3 The Nook, Markfield, Leicestershire

Web site: www.idchomemaintenance.co.uk

Full Tradesman Liability Insurance held

**News from New-
town Linford
Parish Council
and NHW face-
book page**

**Scarecrows -
advance warning.**
The School Gov-
ernors have taken
on the Scare-
crows this year. It
will be on the
23rd and 24th
September.

✂

Booking of Village Facilities

To book the Village Hall
call Pat Wood on 242251.

To book the Sunday
School Room

£10 per hour, £15 for two
hours, £20 for 3 hours,

Call Casey Pearson on
249259

Foot Problems ?

Corns, Calluses, Veruccae, Hard Skin, Nail
Problems, Athlete's foot,
Sore and Cracked Heels.

Have them treated
Professionally in the comfort of
your own home

Ring **Alistair Watt** MCFHP.MAFHP.
Foot Health Specialist

Tel 01530 243009
or 07802 777221

Evenings and weekends
available



Service with a smile -



Contributions to Village Magazine

Can we have your contributions for the July/August 2017 issue by **15th June 2017** please. **Send to the Editor, Carole Heubeck, 5 Grey Crescent, Newtown Linford (01530 244790).**

E-mail heubeck111@btinternet.com

Please could you send any emails to the above email address. If you do not receive an acknowledgement of your email within 3/4 days - please contact Carole, the Editor direct on the above number to check we have received it.

The opinions expressed by the contributors are not necessarily those of the Editors and they reserve the right to amend, shorten or not print any article or advertisement submitted for publication. Whilst every effort has been made to ensure the accuracy of the information printed in this magazine, and advertisements are accepted in good faith, no liability can be accepted for loss, damage or claim of any kind incurred by the reader



Garrett-Long
solicitors



For all of your legal Requirements locally

We can help you with the following services:

- Buying & Selling a Property
- Tenancy Agreements & Disputes
- Transfers of Ownership
- Re-Mortgages
- Lasting Power of Attorney
- Wills & Probate
- Accident & Injury Claims
- Debt Recovery
- Divorce & Separation

Free initial advice and a competitive quote call

0116 2364875

Florence Villa, 5 Leicester Road, Anstey, LE7 7AT

Anstey & District Funeral Services

Independent Funeral Directors
and Monumental Masons
J.G. Wright



We can take care of every detail, advise and help you on each and every step of the way.

- *Traditional hearse & fleet*
- *Flowers arranged for you*
- *Horse drawn carriages, motorcycle hearse & alternatives available*
- *Memorial showroom*
- *Extensive car parking*
- *Private catering suite & private chapels of rest*
- *Funeral Plans available*
- *Independent, 24hr Service*



Funeral arrangements can be made in the comfort of your own home if preferred

24hr Service - 0116 234 0548
Talbot House, Leicester Road,
Anstey, Leicester, LE7 7AT
www.ansteyfunerals.com

Golden Charter
Funeral Home

