

Newtown Linford Magazine

ISSUE NUMBER 203

CONTENTS

Church News	3, 21/23
Coronation Weekend	4/5 & 8
Bell Ringing	6
Coffee & Cake	7
Tennis Club	7
Entry Voucher for Coronation	10
A Night at the Oscars	11
Gardening Club	13
Newtown Linford Bio Diversity	15
Friends of Charnwood Forest	16
Primary School	18
Boules	20
Ramblers	20
Easter Services	21
Rummage Sale & Brownies	25
Open Gardens	31
Village Archives	33
David Snartt News	34
Neighbourhood Watch	37
Parish Council	39



April 2023

Paint Wizard

Mobile Vehicle Body Repairs

All work completed at your home
at your convenience

Call for a No Obligation Quote

07850 456696

Or email:

paintwizardthomas@gmail.com

Thomas Leason



Panel Resprays
Scratch Removal
Stone Chip Repair
Colour Restoration
Alloy Wheel Refurbishing
Machine Polishing & Glaze
Colour Code Bumper Resprays
Colour Code Wing Mirror Resprays

Consult

WALTER MILES

(Electrical Engineers) LTD

Est. 1928

For All Your Electrical Requirements

**LIGHTING, HEATING, POWER, REPAIRS, RENEWALS
AND MAINTENANCE**

Member of the Electrical Contractors' Association and N.I.C.E.I.C

Office and Works Marshall House, West Street, Glenfield, LEICESTER, LE3 8DT
Telephone 0116 287 2400 Fax 0116 287 2552
E-Mail office@waltermiles.com

Horseshoe Cottage Farm

Luxury bed and breakfast accommodation



Award Winning B & B.

Winner of the Silver Medal for 2022
Visit England
Best B & B in England

Previous winners of Outstanding
Customer Service & Sustainable
Tourism in the East Midlands

Roecliffe Road, Hallgates, Cropston, Leicestershire LE7 7HQ

Tel: + 44(0) 116 2350038

Email: lindajee@horseshoecottagefarm.com Website www.horseshoecottagefarm.com

The Bradgate

Group Parish



A couple of days ago (as I write) there was a bit of a kerfuffle in the press: Alex Salmond had suggested that the Scots ought to withhold the Stone of Scone from the Coronation of King Charles III in May. Used for centuries in the coronation of Scottish monarchs, it's also been placed under the coronation throne of all English monarchs for several hundred years too.

Details of the Coronation in May continue to be released in bits and pieces – again as I write we still don't even know the time it will start on Saturday 6th May. But we do know the throne which will be used, whether or not the Stone of Destiny (as it's also known) is sitting in its usual compartment or whether the Leader of the Alba Party has got his way. The seat itself has its own august history – over seven hundred years of it.

Thrones are one of the most significant symbols of power we have – maybe from the days when seating for everyone was not provided, only the most important were allowed to take the load off their feet! Even cathedrals are named after the seat of the bishop which they house. Someone's place, allocated seat, tells us a lot about them, whether it's a throne or the place of honour at a banquet, or even the ownership of a 'reserved' parking space.

But the Coronation is in May, and before that in April we mark the events of Good Friday and celebrate Easter. To compare, it's interesting that in the New Testament, while the cross is never called a throne, it is clearly the place in which Jesus' destiny is revealed and fulfilled, the place of honour and glory despite being a rough-hewn instrument of execution. Before we come to celebrate the Coronation in May, the official commemoration of a new reign, we come first to mark again the beginning of a new era in human history, the realisation of the reign of a rescuing King - not on an ancient, august, throne, but on a rough and ready cross.

Richard Trethewey
Rector of St Peter's, Glenfield, and All Saints', Newtown Linford
0116 287 1604



THE
CORONATION
KING CHARLES

III
2023

Saturday 6 May 2023

Coronation Service

live-streamed in church

with refreshments

Sunday 7 May 2023

10am Commemorative Service

with refreshments



King Charles Coronation Celebration
Newtown Linford Village Party

Sunday 7th May



Malcolm's Field 12noon - 6pm
Bring you own food and drink
Events - Games, fancy dress, tug of war



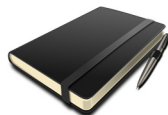
This event is being planned for all age groups and everyone in the village

Coronation Edition of the Village Magazine.

Do you have any old family or village photos of the Queen's Coronation or celebrations that happened in May 1953? Would you be willing to share them with the rest of the Village?

Any reminiscences of the day itself: where you were; did you get the chance to see the Coronation on a TV; or was there a party in your street? Please send your contribution to the editor. It will be lovely to look back and hopefully we shall make many more memories at this years celebrations.

VILLAGE DIARY



April

- 5th Parish Council Meeting (moved from March) 7:15pm
18th Biodiversity Group meet
25th Gardening Club
26th Friends of Charnwood Forest

May

- 6th /7th Coronation Weekend Event in the Village
10th Annual Parish Council meeting
16th Start of the Boules season

Regular events

Mondays

- 9.30 Slimming & Fitness, The Linford
1.30 Dance Fitness for 50+ Linford
5.30 Brownies at "The Linford"
8pm Bell Ringing at the Church

4th Tuesday of the month

Gardening Club

4th Wednesday of the month

Gentleman's Club Bradgate PH

Wednesdays

- 10.30 and 6.30 Bodyblast Classes The Linford
10am Art Club in Church
Quiz nights at The Linford 8pm start

Thursdays

- 11.15 Coffee Mornings Village Hall
6.15 Slimming & Fitness, The Linford

Fridays

- 9:30 Jolly Tots, The Church

Saturday

2nd Saturday of each month - Village Ramblers

Bell ringing for Coronation of King Charles III



A call to any "retired" bell ringers. The bells at All Saints Church will be ringing to celebrate the Coronation of King Charles 3rd. If you are an experienced bell-ringer, who perhaps hasn't rung for a while and would like to be part of this historic event, then please contact me on 01530 243822 or sayeriris@gmail.com

Timings will be announced in due course.

Iris Sayer

COFFEE & CAKE ROTA April to May 2023

April

- 6th Judy Rowe, Felicity Manning, Marilyn Upstone 243989: 245298:
242715
- 13th Glennis Meredith, Mary C, John Castle Carolyn T
242897: 0116 3190211: 249173
- 20th Maria Simms, Vicki Kerr & Friend 07974 085434:
07904123603
- 27th Lesley Cook/Chris A/Ann Scrine 245208: 242432:
481928



May

- 4th Carol Ann, June Hallam, Fiona Bradley, Elspeth 243433:
0116 2304808
- 11th Jenny C, Sue Howard, Charlotte T, Gilly 245373: 07896 349977;
242959
- 18th Janet & David Brunton 242662
- 25th Sue Morran, Sarah Brown, Teresa Calvert 07810 116641;
07811 166161; 07469 719018

Please swap with someone else if you are unable to do your duty. Pass on the hall key to the next people on duty.

An opportunity for everyone to catch up on Village news and activities and to meet your fellow neighbours

Rota Volunteers - If you are struggling with putting the tables and chairs out for your duty Joe Costello 249613 has offered to help if around and will ask someone else to help him as well.. **Carol Ann**

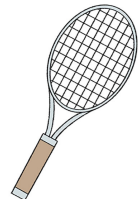
Thank you to all the Coffee & Cakers that baked a cake, donated a tombola prize, rummage or came to help at the rummage sale last month. It was a great success and a community effort, more from Brown Owl later in the Magazine .

Tennis club

The New Season is here at last! Why not come and join our friendly, inclusive, sociable club.

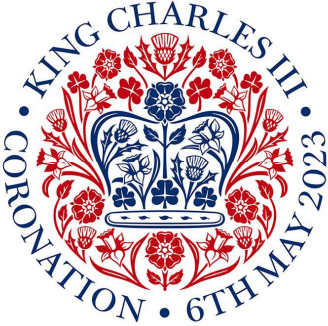
For information about joining go online to 'Newtown Linford Tennis Club Clubspark' or call 01530 243433.

Lessons for all abilities.



CORONATION VILLAGE PARTY

SUNDAY 7th May, 12 - 6.00pm



By the time you read this there will probably be less than six weeks to go before we have our Village Party to celebrate the Coronation of King Charles III. You are all invited, so come along, bring your family and your neighbours, let's make sure we all celebrated in style.

Malcolm Brewin has kindly offered to host the village party in his field adjacent to 130 Main Street from midday on Sunday

7th May. Access to this field will be open from 8am and we would encourage you to drop off anything you may need early that morning and walk down later, if you are able, as parking will be limited on the field opposite.

Please bring your own food and drink for a picnic, and table and chairs. We will be providing a few chairs, and even fewer tables, if needed. It is quite acceptable to bring a gazebo or other small structure should you wish.

Carolyn Turner and her team are organising numerous children's events, based on traditional games and races, plus other more strenuous activities, such as tug-of-war, and Wellie Wanging for the adults. Those of you who prefer something quieter, there will be a fancy dress competition and we will be looking for the best dressed King or Queen in the adult category, and for children under 12.

For the ingenious cooks we will have a Coronation Cake competition, the more extravagant the better. I will ask the judge to give me more guidance on this for the next issue of the Magazine.

Master of Ceremonies, Nigel Blythe, is already warming up his larynx for announcements, and there will also be some appropriate background music at times.

To help in the planning of this event we do need to have some idea of the numbers. If you intend to be at the Party please contact Carol Ann Sugden by phone, text or email, to casug1@btinternet.com, or 07970 970580 with the probable number of adults and the number of children under 16. This is so that we have sufficient resources on hand to safely organise activities and to prepare a timetable of events for the afternoon. The timetable will be available on the day (cont on page 10)



BROUGHTONS

— LIGHTING & IRONMONGERY —



Showroom Open
Monday - Saturday 10am - 4pm

The Old Cinema Cropston Road Anstey Leicestershire LE7 7BP

0116 232 3175

www.broughtons.com sales@broughtons.com

Jolly Tots Playgroup



Friday Mornings

All Saints Church, Newtown Linford

9:30am - 11am

We are a friendly group of parents, grandparents, carers of babies and children up to reception age (4years).

We have lots of fun with toys, crafts, stories and Singalong.

There will be hot drinks for Adults and Cold drinks and snacks for Children.

All Welcome.

For more information or if you would like to help in any way -

**please contact Ann 07925 919 618 or
Carolyn 07896 960 676**



Within this magazine you will find a voucher for your household, which we are asking you to cut out and hand in on entering the event, this is for you and for any members of your family and friends that you are bringing with you.



I am always asked “will there be any toilets?” Well yes there will. If you don't like them you can use those in the Village Hall which will be open.

We do have some contingency plans if the weather is wet and the ground too saturated but at the moment all our teams efforts are in providing some good events and an entertaining afternoon in Malcolm's field. There will be a more comprehensive update on events and other activities in next month's magazine but make you have this date in your diary. **See YOU there.** **Dick Howard**



ENTRY VOUCHER

King Charles Coronation Celebration
Newtown Linford Village Party

SUNDAY 7th May 12 - 6pm

This is the entry voucher for your household.
Please cut out of the magazine
and present at the entrance to Malcolm's Field.

The field will be open from 8am for you to drop off,
or erect anything you may need on the day.

There is only limited parking opposite
so you are encouraged to drop off early and walk
down

HOUSEHOLD NAME

NEWTOWN LINFORD CHORAL SOCIETY

present

A NIGHT AT THE OSCARS

Musical Director: Sue Ford

Accompanist: Sam Giles

7.30pm Friday 9th & Saturday 10th June

Village Hall, Newtown Linford

Tickets: £12 (£6 U18/students) 01530 243822

Optional: Bring a picnic/nibbles for 7pm (no drinks).

Licensed Bar

Registered Charity No. 1079843

Mary Poppins

La La Land

Let the River run

Cheek to Cheek

Beauty & the Beast

West Side Story

Roecliffe Tree Surgery.

Get in touch today for a free quotation, we cover all aspects of tree surgery:

- Crown Thinning
- Stump Grinding
- Hedge Cutting
- Reductions
- Pollarding
- Fencing
- Garden Maintenance



Phone: 07921381902 | 0116 292 9749

Email: roecliffetrees@outlook.com

Facebook: @Roecliffetrees



Newtown Linford Gardening Club
(www.newtownlinford.org.uk/gardening-club.html)

What is it like to be in charge of some of the most prestigious gardens in the country? To be Head Gardener of the Royal Parks must be one of the most wonderful jobs in the horticultural world.

That role was held by Jim Buttress, who is coming to Newtown Linford to tell us all about it. We feel very privileged to be able to welcome such an important and celebrated gardener to our village.

After training at Wisley and working in London he moved to garden design. During his career he won no fewer than 8 gold medals at Chelsea.

The main part of his career was spent managing the Royal Parks in London. At various times he was responsible for Hyde Park, St. James's Park and Greenwich Park along with the gardens at Clarence House and Buckingham Palace.

He appeared on television as a judge of the Big Allotment Challenge and he also judges at RHS shows. He is a holder of the Victoria Medal of Honour, the highest award in the world of horticulture and limited, at any one time, to only 65 people.

He comes to the Village Hall in Newtown Linford on Tuesday 25th April at 7.30pm and will be talking about the Royal Parks in which he worked. We will be pleased to welcome any visitors to this occasion because we feel there are people outside our membership who would be interested in hearing him speak. We charge only £3 for visitors for such an event and, if you are interested, please give us a ring.

More details of our club can be found on the internet or by contacting us on 01530 242452.

Anne and David Couling



**E.W. Goddard
& Sons**

(Established 1970)

QUALIFIED PLUMBERS

**Bathroom and Tiling
Specialists**

**All Building Work
and Renovation**

305 Markfield Lane
Markfield LE67 9PR

Telephone

**01530 245316 or 0116 2311672
07961 319908 or 07961 319907**

Derry's Nurseries



Est 1976. Well worth a visit....

Main Steet, Cossington LE7 4UU

Tel (01509) 812815 Open 7 days a week

Campervan Café open Friday, Saturday & Sunday

Serving Leicestershire and the East Midlands since 1976. We have a unique, customer focused approach and we invite you to visit us at our 11 acre site in Cossington. Whether it be compost or a shrub we stock a variety of plants for delivery or collection.



Come and see our wide variety of ever-green shrubs & plants now in stock

We have a superb selection of Pots, Decorative stone, Sleeper Beds

**Full
size
trees
in
stock**



**New Loyalty Card
10% OFF
Everything
Except Fuel
Only £5 for life**

Seasoned Hardwood Logs, Coal & Kindling. Supplied in nets, bulk bags or loose loads. Our Hardwood bulk bag offer—delivery within 5—8 working days.



**FREE DELIVERY TO LOCAL AREA
Derry's Nurseries NOW ONLINE
at www.derrysnurseries.com**

Email: hello@derrysnurseries.com



Newtown Linford Biodiversity Group

Facebook

A reminder that Newtown Linford Biodiversity is on Facebook. If you join this (public) group, you'll be able to post details of your local wildlife sightings, photos, or anything else you think may be of interest e.g. tips on how to make our gardens more nature-friendly. We currently have 43 members/followers but would love to welcome more of you.

Webpage

We also have a page on the Parish Council's website, with information about the group and details of meetings and activities.

<https://www.newtownlinford.org.uk>

Wildlife Walks resumed on Saturday 25th March when we visited Sheet Hedges Wood to look at early Spring woodland flowers.

We normally meet outside the Village Hall at 2pm. To help with coordinating transport, please contact the walk leader, Toby Manning, in advance (though this is not essential) on 01530 245 298; email ptm@tobymanning.co.uk

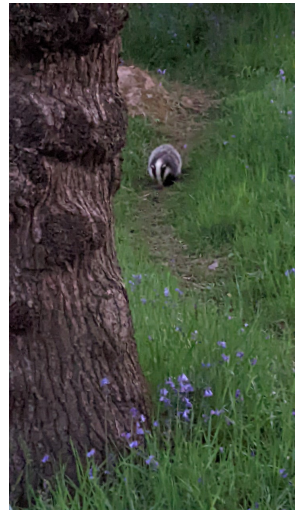
NatureSpot

NatureSpot helps to record the wildlife of Leicestershire and Rutland. If you search for Newtown Linford in the Parishes/Wards search box on the home page, you can find out more about nature in our Parish (this page is supported by our Parish Council.) There are also links to our local "Wild places": Bradgate Park, Lea Meadows, Sheet Hedges Wood and the wildlife sections of Groby Lane and Markfield Lane roadside verges.

<https://www.naturespot.org.uk/>

Regular Meetings

We hold regular meetings to monitor progress and to plan events. The next one is scheduled for 18th April (afternoon). If you would like to attend please contact our convenor, Claire Costello, on 249613.





THE FRIENDS OF CHARNWOOD FOREST



The April meeting of The Friends of Charnwood Forest is at 7.30 pm on Wednesday 26th April. The speaker is Helen Baxter from the Shuttlewood-Clarke Foundation at Ulverscroft Manor. Founded in 1989 by the late Mr David Clarke, the Foundation is mainly dedicated to Ivy Shuttlewood,



David's mother, who by marriage became Mrs Arnold Clarke. The main focus of the Foundation's work is to ease loneliness and suffering and to offer comfort and support to the elderly and adults of all ages with disabilities, throughout the Leicestershire area.

FOCF members, free, visitors £3.

Marilyn Upstone

At the last meeting of the Friends we were given a very detailed talk on the history of the Mountsorrel quarry and its railway by Mark Temple. There is evidence to suggest the quarry was in use in Roman times, for the pink stones in the Jewry Wall can be found in the quarry. After the Romans the quarry working picked up again in the seventeenth century. Various Mountsorrel buildings, now demolished, were made from Mountsorrel stone. In the 19th century there was a big demand for stone for macadam which was used in road building. The stone was initially transported using horses, but latterly the railway was used. The line ran from the Great Central Railway at the time it was constructed, via the quarry, to the Midland Railway. The land was originally owned by the Martin family, and was later bought by Lord Lanesborough. The badge of the company formed refers to a windmill originally sited above the quarry, but moved as worked progress to a lower level, which proved unsuitable for it and it was demolished.

Cottages were provided for the workmen and a religious building which was later converted into a hospital. In the 1890's electric lights allowed extended working hours in the quarry in winter when a crushing mill was also installed. Other local quarries included one at Buddon Wood,



Cooks Farm Shop & Country Supplies



For all your Animal, Pet & Bird Feed



Did you know that we sell:

Equestrian Supplies - Pet Food & Supplies

Timber, Fencing & Gates - Electric Fencing

Bird Food including Mixes & Straights

Pigeon Food & Supplies - Fish Food

Point of Lay Hens & Poultry Food - Coal & Logs



Visit our Website: www.cooksfarmshop.co.uk

Markfield Lane, Newtown Linford LE6 OAB

Opening Times: Monday - CLOSED

Tuesday to Saturday 9am - 5pm Sunday 10am to 1pm



which is still in use. The Mountsorrel quarry was finally closed in 1967. The railway joined the Great Central at Swithland sidings. Although a flight of stairs was provided, no station was ever built on the orders of Lord Lanesborough. The line was closed in 1964, when a conveyer belt replaced that part of the line which ran to the Midland. The part to the Great Central has been restored as a preserved line – due to tipping it can no longer be connected to the other part. Lafarge provided ballast for the line. A nature reserve has also been included and a museum which is in part a reconstruction of previously existing buildings. The line was opened on 25th January 2017.

Dr D McNeil

How to contact the Police

All incidents are to be reported to the Police and **by calling 101**

They will then assess the situation and deal with the situation as they see fit. This may involve a vehicle from another area. If you wish, also advise our NHW coordinator who will circulate if appropriate.

An alternative way is to go online to report an incident

<https://www.police.uk/pu/contact-the-police/report-a-crime-incident/>

This may be easier if the phone call is not urgent. 101 calls are not free.

Newtown Linford Primary School



The children at Newtown Linford have had a very busy spring term. We have been on trips, helped at events and even managed to get out into the community.

KS1 had a brilliant time going to see 'Room on the Broom' at the Curve and KS2 had a fascinating time at 'Thinktank' Science museum in Birmingham

The children had a wonderful day on World Book Day, where they dressed up, had book swaps and our teachers all changed classes to



read stories.

The children loved sharing stories with each other and we really saw the wonderful family feel our school has.

The children enjoyed being able to get back out to meet members of our community at 'Coffee and Cake'. They have also had a 'Bake Off' in school in order to make enough cakes and 2 winners will be taking part in a competition at Brookvale Groby School later this month.



Our choir are currently busy learning songs for a massed choir event at De Montfort Hall. We are so proud of all our children who always fully embrace everything we do.

We do still have some places available for children in KS2. If you would like to look round our school then please contact the school office:

office@newtown.bepschools.org

Mrs Proudman and Mrs Kennedy
(Co-Headteachers)

MARTIN ALLEN

**FLOORING &
FRENCH
POLISHING**

**YOUR LOCAL
FLOORING SPECIALIST.**

All timber floors laid

**All existing timber floors sanded
and refinished**

Any colour or finish

Free quotations - Call Martin.

0116 2165107

martin@martinallen.co.uk

Village Walk, Saturday 11th March by Jane Woolmer

Six of us departed from half way down Leicester Lane (between Swithland and Cropston) to walk along the bottom of Swithland wood. This was rather rather boggy and wet from the melting snow. There were still patches of melting snow which made the fields look as if they were full of snowdrops and snow still clinging to the side of tree trunks gave an image of light shining on them.

As we reached Swithland two walkers returned to their cars, and four of us took the footpath to the track leading to Swithland Reservoir. Then we went along the track to return via the bridleway to Swithland. Time was running out so the consensus was to return to our cars along Leicester Lane rather than walking through Swithland, past the Griffin and back along the bridleway. An enjoyable Walk.



NEWTOWN LINFORD BOULES

Welcome to our 21st year

2023 SEASON

TUESDAY 16th MAY TUESDAY 13th JUNE

TUESDAY 18th JULY TUESDAY 15th AUGUST

TUESDAY 12th SEPTEMBER

Meet outside the Village Hall at 6.20pm
(September 6.00pm).

All matches to be played at The Blue Bell Inn, Hoby.
(Tel. 01664 434247).

Contact. Stuart Wardle 07891 444440

Please confirm on the previous Friday if you are attending
so that I can confirm your meal reservation.





From Sunday 2 April
Stations of the Cross

an installation in the churchyard, 14 stations
to reflect on the suffering and death of Jesus

Maundy Thursday, 6 April
7.30pm Holy Communion
a joint service with St Peter's Glenfield

Good Friday, 7 April
2pm An Hour at the Cross
a meditative and reflective service
with music and readings

Easter Sunday, 9 April
10am Celebration Communion
followed by an Easter egg hunt in
the church or churchyard

SUNDAY SERVICES April 2023



DATE	GLENFIELD	NEWTOWN
2 April Palm Sunday	8.30am Holy Communion	
	9.30am Breakfast Church	10am Holy Communion <i>John Woolmer</i>
6 April Maundy Thursday	10.30am Holy Communion	
		7.30pm Holy Communion <i>Richard Trethewey</i>
7 April Good Friday	9.30am Breakfast Church	
		2pm Hour at the Cross <i>Richard Trethewey</i>
9 April Easter Day	5.30am Dawn Service	
	10am Holy Communion	10am Holy Communion <i>John Woolmer</i>
	6pm Holy Communion	
16 April Second Sunday of Easter	10am Morning Worship	10am Holy Communion <i>Richard Trethewey</i>
	3pm Worship for All Ages	
23 April Third Sunday of Easter	10am Holy Communion	10am Baptism <i>Richard Trethewey</i>
Midweek Holy Communion		
Newtown Linford	These services have been cancelled for the time being	
Glenfield	10.30am, Thursday 6th, Wednesday 19th & 26th April	

CHURCH REGISTERS

WEDDINGS

- *None*



BAPTISMS

26 February ~ Blair Matilda Hill

We welcome her in to the Church Family

FUNERALS

13 March Gillian Christine Bates



We extend our sympathy and prayers to the family and friends, and pray that they may find peace through faith in Jesus Christ our Lord.

Online Services

<https://www.facebook.com/allsaintsnewtownlinford/live>

<https://www.facebook.com/stpetersglenfield/live>

Church Contact Details

Revd Richard Trethewey
(Rector) 0116 287 1604
richard@allsaintsnewtownlinford.org.uk

Hayley Moore (Church Administrator)
0116 239 3768

office@bradgatechurches.org.uk
www.allsaintsnewtownlinford.org.uk

Church Wardens: Michele Petty, m.petty@ulverscroft.co.uk,
Jane Woolmer, ejwoolmer@gmail.com.

Regular Events - Bell ringer's practice: Monday 8pm

Website: www.allsaintsnewtownlinford.org.uk





THE
BRADGATE
NEWTOWN LINFORD

Book Your Social Event

Loft for private and corporate functions
Birthday Party Celebrations
14 - 28 guests

Family Pizza Deal

2 Adult Pizzas & 2 Kids Pizzas & 2 Sides for £35

Available Tuesday—Friday 3pm-6pm

Two Pizzas for £20

Available Monday 12pm—close

Available Tuesday—Friday 12pm—6pm

Open from 12 noon Daily

Tel: 01530 242239

Email: contact@thebradgate.com

[Www.thebradgate.com](http://www.thebradgate.com)

Rummage Sale

On behalf of Brownies, Pre-School, Village Hall, Jolly Tots and Coffee and Cakes. We would like to thank everyone in the Village who supported our Rummage Sale.

It was a huge success and great fun. The hall was packed to capacity with customers and all sorts of sellable goods.

You name it, we'd got it!!!

The donated cakes looked delicious and we had lots of praise from customers, quite a few saying "we will see you again next year"!!!

All leftovers were collected by LOROS who thanked us very much for such a large donation.

Rummage Sale Groups



PS An elderly lady left the rummage sale with bags of goods—she came back in and gave me a big kiss on the cheek and a hug and said "please thank everyone who has been involved in this lovely rummage sale - it is much appreciated. In this day and age it is not everyone who can afford to go shopping for new clothes so you have done these people a great service. Once again thank you very much.

Hilary Brown Owl.

Gillian Christine Bates

Gill was born on the 12th August 1943 in the Leicester Maternity Hospital. Her Mother and Father were Norman and Irene Wright of Forest Gate Anstey. 10 months later, in May 1944, her Father, Sgt. Norman Wright of the North Staffordshire Regiment was killed in action on the Beachhead at Anzio in Italy.



Gill attended the Infant and Latimer Street Schools in Anstey.

About five years later her Mother married again to Charles Wright, a distant cousin of Norman who she always called Dad. Gill had many years of Piano lessons as a child but she didn't really enjoy it and did not continue with them.

Her sister Geraldine known as (Gez) came along in 1953. In that same year Gill passed the eleven plus and went to the Rawlins Grammar School for Girls in Quorn, where she excelled in Cookery, Domestic Science, History and English. Not so in the Science and Mathematics subjects which always remained a mystery to her.

She left Rawlins in 1958 and started work with the Co-operative Society in Ash Street Leicester, doing Secretarial work whilst at the same time she attended night school for shorthand and typing. She left the Co-op after about a year and started with John Heathcoat and Company in Charles Street as a secretary and eventually ran the area sales office.

This is where I came on the scene because in the summer of 1958 a group of about 30 left the Youth Club in Anstey and walked to a dance at the Village Hall in Old Woodhouse. During the evening I plucked up courage and asked her if she wanted to dance and she said yes. Walking back to Anstey from the Dance, I asked if I could walk her home and again she said yes.

So that's how it started. I took her to the Cinema in Anstey on the following Saturday, after playing football of course. At about 9.15 she said "Des, let me know how it ends because I have to be home before 9.30

Problems With Your Feet?

Home Visits & Cropston Surgery

- ∞ Ingrowing Toenails
- ∞ Fungal
- ∞ Corns
- ∞ Callous
- ∞ Verrucae

Johanna Partridge MCFHP MAFHP
Foot Health Practitioner
CALL 0116 235 1971
Or 0788 781 7370

Registered Member of the British
Association of Foot Health Professionals



SYKES JEWELLERS

WATCH, CLOCK & JEWELLERY REPAIRS

WATCH BATTERIES AND STRAPS FITTED WHILE YOU WAIT

8 BRADGATE ROAD, ANSTEY
TEL: 0116 236 2510
sykesjewellers.co.uk



otherwise my Dad will tell me off"

A couple of years later we got engaged. I had to ask her Dad because in those days you had to get permission if you were under 21. We married on the 23rd March 1963 at St. Mary's Church Anstey and we had the reception at the Linford here in Newtown Linford. After our honeymoon in London we returned to Leicester and moved into our new semi-detached house just inside Leicester off the Anstey Lane.

Our first son Paul was born in 1966 followed by daughter Fiona in 1968 and then we decided that the house was too small and we wanted to get back to village life and eventually we moved into 12 Groby Lane just round the corner from here in 1971. Second son Iain arrived in 1972 and we started to get really involved in village life.

I joined the Cricket Club and whilst I was Captain, Gill was the tea lady. She started a keep fit club in the Linford and we both got involved with the reading of lessons in Church and joined the Church Choir.

For a time Gill was the Secretary of the Village Hall Committee and also Secretary of the Tennis Club. She was on the Committee of the Women's Fellowship, the WI and Women's Fellowship which catered for the older generation. We were also involved with the Christmas Lunch that

the Village Hall put on yearly for the over 60's. We were both in the Badminton Club in the Village Hall. Gill also helped with the meals on wheels in the Library in Anstey.

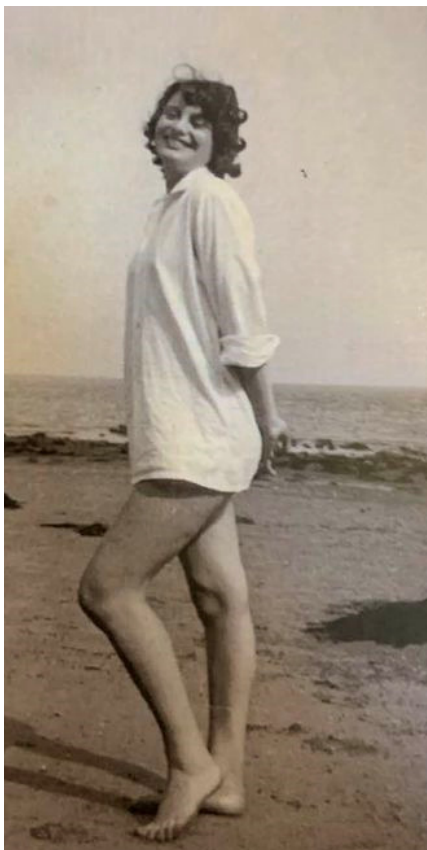
We were both heavily involved with the Bradgate Drama Society and Gill took the lead in many of their productions. Gill helped with the catering at the Village Hall including coffee and cake on Thursday mornings. Gill did the catering when I did the music quizzes to raise money to refurbish the Village Hall. We were both founder members of the Newtown Linford Choral Society when it started in 1999. Gill was also a member of the Keep fit Club and Yoga sessions in the Village Hall.

Gill also kept in touch with all of her old girl friends for a lunch and a gossip at Judy's Friday lunches in Anstey. She also took her turn with the teas at Brookfield Bowling Club and the New Lount Bowling Club. As you can see she was a very busy person and there were times when even I had to make an appointment to see her.

By this time she was working part time for one of her old Heathcoat bosses at Tikiknit which was a Leicester Fashion House and besides secretarial duties she modelled the dresses both at the London Fashion Show at Earls Court and she was on the catwalks in the New York Fashion Show.

When Paul, Fiona and Iain were at the Village School Gill started a part time job as a receptionist at the Johnsccliffe Hotel working for Marion and David Smith which she enjoyed immensely. When the Johnsccliffe closed she became a Doctors receptionist and a medical secretary in the NHS until she retired in 2003,

Our extended family started in 1990 when Fiona married Mark and in 1994 Jack was born, followed by Henry in 1996 and then granddaughter Rachel arrived in 1999. In 1991 Paul married Stephanie and George arrived in 1994, Samuel in 1999 and Harry in 2002.



KEITH SMITH (ANSTEY) LTD

6 STADON ROAD ANSTEY LE7 7AY - TEL: 0116 2362395 - sales@keithsmithltd.co.uk

FAST FREE LOCAL DELIVERY



**ZANUSSI
ZWF725B4PW**
Washing Machine
✓ 1200rpm Spin Speed
✓ 7kg Load Capacity
✓ E Rated
✓ 2yr Guarantee
✓ 14 Programmes



Now Only **£309.99**



**BOSCH
WAJ28008GB**
Washing Machine
✓ 1400rpm Spin Speed
✓ 7kg Load Capacity
✓ D Rated
✓ Express Wash
✓ 15 Programmes



Now Only **£372.00**



**Blomberg
LWF174310W**
Washing Machine
✓ 1400rpm Spin Speed
✓ 7kg Load Capacity
✓ 28 Min Fast Full Load
✓ 16 Programmes
✓ D Rated



Now Only **£399.99**



**HOTPOINT
NM11946WSAUKN**
Washing Machine
✓ 1400rpm Spin Speed
✓ 9kg Load Capacity
✓ A Rated
✓ Rapid Option
✓ White



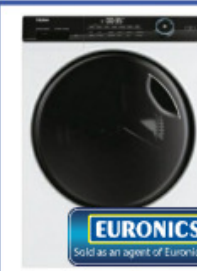
Now Only **£409.99**



**BEKO
CIFY81X**
Built-In Single Oven
✓ 5 Functions
✓ 66 Ltr Oven
✓ Fan Assisted
✓ Stainless Steel
✓ A Rated



Now Only **£259.99**



**Haier
HW90B14959U1UK**
Washing Machine
✓ 1400rpm Spin Speed
✓ 9kg Load Capacity
✓ A Rated
✓ 5yr Guarantee
✓ White



Now Only **£429.99**

Fitted Kitchens

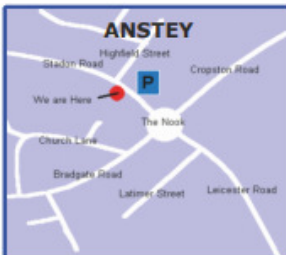
We are pleased to announce that we are now agents for A.W.E Kitchens and Bedrooms Who specialise in Bespoke made to measure kitchen & bedroom furniture

Please call in for further details

FREE DELIVERY

with Personal Service

“Ask About our Same Day/Next Day Installation and Removal Service”



Lastly Iain married Gillian in 2006 and in 2009 Freya came along followed by Theo in 2013. So that is 6 Grandsons and 2 granddaughters. Our first Great Granddaughter came along in 2021 when Amelia and George had Harla. We lived in Newtown Linford for forty years and during this time we made many life long friends, too numerous to mention but the Snarts, Cooks and Andersons were especially close.

In 2011 we made the decision to leave Newtown Linford because the house and garden became too big for us to manage and we moved to Springfield on the edge of Thringstone overlooking the Grace Dieu Park Cricket ground.

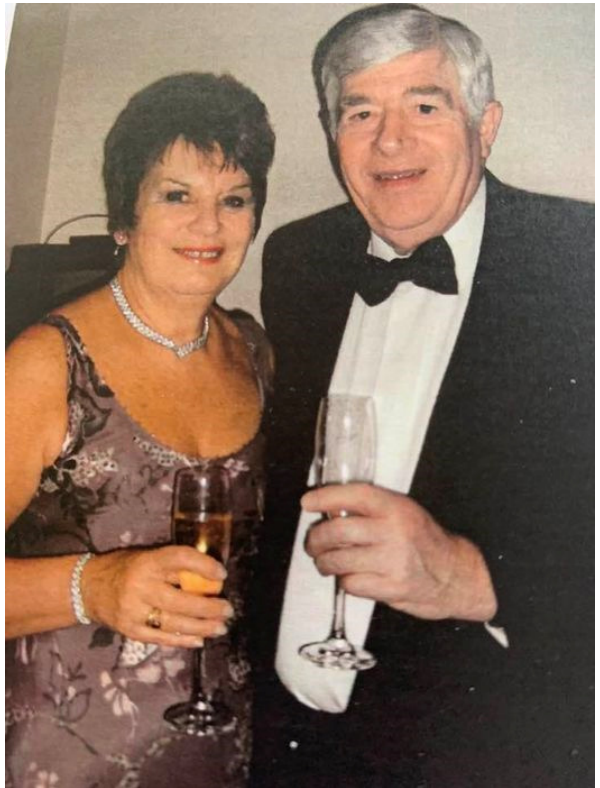
Gill became a Committee Member of the Friends of Grace Dieu Priory and did guided tours of the Priory to local school children and also attended the local Keep Fit Club at the Charles Booth Centre (formerly the Thringstone Centre) and we both went to the St. Andrew's Church in Thringstone.

I would like to make a special mention of thanks to Rev. Darren Walker, Kirsty and Jeanette of St. Andrews Church for all their love, help and support they gave us during Gill's illness.

I know Gill was a very good friend to many people here today and she will be sadly missed by them all. She was a wonderful wife, outstanding Mother and Mother in law and amazing Grandma and Great Grandma.

There is one thing for certain: All our family loved her very dearly and they will make sure that she will never ever be forgotten.

Des Bates. March 2023.



National Garden Scheme Leicestershire Open Gardens April 2023

In April we have 4 gardens opening to visitors with a great display of spring bulbs and early colour.

Over the weekend of the 1st and 2nd April, Oak Cottage near Blackfordby Swadlincote DE11 8AG is open from 10-4pm. A beautiful ½ acre garden attached to a 300 year old thatched cottage. There is a large selection of mature trees, specimen trees, several ponds, a waterfall combined with over 3 acres of paddocks with Hellebores, Snakes Heads Fritillary, and mature Magnolias.

On Sunday 2nd April from 2-5pm, a fabulous spring garden with hosts of daffodils opens at Stoke Albany House, Desborough Road, Stoke Albany, Market Harborough, LE16 8PT. This is a mature 4 acre country house garden which has been carefully and lovingly developed by the owner, Anna Vinton, for over 40 years. All around the garden there are swathes of different types of daffodils flowering for weeks on end. Planted in among the daffodils are spring flowering shrubs. There are also many beautiful Japanese flowering cherry trees planted all around the garden including a group of 7 Yoshino cherry trees creating clouds of spring blossom. The garden also features spring flowering Magnolias and silver birch trees with their attractive ghostly white trunks. This is a fantastic spring garden to visit and has been featured in this year's March edition of The English Garden and it's here on our doorstep to explore.



Daffodils in flower at Stoke Albany

At the end of April on Sunday 30th Tresillian House will open from 11pm - 4pm. There is always something interesting to see in this pretty garden waking up for spring with crocus and spring bulbs emerging along with Hellebores and early spring flowers.

On the same Sunday, Westbrooke House Little Bowden, Market Harborough, LE16 8AXt opens all day from 10.00 – 4.30. Westbrook is a late Victorian house surrounded by 6 acres of garden with lots of different features including a walled flower garden, walled kitchen garden, fernery, lower garden, wildlife pond, spring garden, lawns, woodland paths and a meadow with a wildflower area, ha-ha and hornbeam avenue. In late April the outstanding feature is the tulip display with over 10,000 bulbs for a brilliant display of colour. **For further details of our open gardens, accessibility, directions and admission details visit www.ngs.org.uk**

**Vicky and the team
welcome all customers
to YOUR local**



66 Main Street, Newtown Linford
Tel: 01530 244012
thelinford.co.uk

- ❖ Quiz Night every Wednesday, 8pm start.
- ❖ Regular entertainment – details on Facebook, Instagram, and Notice Board in the lounge.
- ❖ Room Hire available, ask at the bar for details.
- ❖ Free Wi-Fi.



Food Available

- ◇ Bacon Cobs
- ◇ Paninis
- ◇ Jacket Potatoes
- ◇ Nachos
- ◇ Pukka Pies
- ◇ Baguettes
- ◇ Sausage Cobs
- ◇ Soup

**Reduced prices on all beers, wines &
spirits for Members. Membership
Forms are available at the bar.**

**Opening Times: Monday - Friday 4pm – 11pm.
Saturday 11am–11pm. Sunday 12noon – 8pm.
Friday Happy Hour 4pm—5pm**



01530 244012

newtownlinfordclub@gmail.com

Claire Lawson (Nee Bradshaw)

It was with much regret that the Committee, Staff, and Customers of The Linford were told of the passing of Claire Lawson (Nee Bradshaw), Manager of The Linford until May 2022. Claire sadly passed away on Wednesday 22nd February 2023, and a Private Funeral, at her request, took place on Tuesday 7th March 2023 at 8.00am.

Claire was appointed Manager at The Linford in December 2018, and left The Linford to move to Norfolk to be with her new partner. Claire was diagnosed with a terminal illness in late 2022, and hastily arranged her Wedding, which took place on Wednesday 28th December 2022. Our thoughts are with Claire's family at this time. She was an extremely brave and courageous lady who will be remembered with affection. The Linford are making plans to install a defibrillator, on the premises, in memory of Claire.

From the Archive:

Coronation of Queen Elizabeth II on 2 June 1953.

This is a copy of the Archive entry made shortly after the Coronation.

“Extremely inclement weather marred festivities planned for the actual day of the Coronation. A children’s tea party was held in the Bradgate Hall, but their sports event could not be held on the cricket field, so a curtailed programme was carried out in the Hall.

Tea was followed by a cinema show and each child received a souvenir mug. Later in the evening there was a social and dance.



The firework display had to be postponed until the weather was suitable. On Thursday, all the old people of the Parish had an excellent luncheon at the Hall, followed by a coach trip to Leicester and Loughborough to see the Coronation decorations. Luckily the weather had greatly improved and they really enjoyed the drive in bright sunshine.

The competition for decorated houses was very popular and gave the village a very gay and festive appearance, despite the havoc caused by the wind and rain. On Saturday a really warm day at last, the children’s fancy dress parade and a parade of tableau and lorries were a great success. The week concluded with another dance in the Bradgate Hall and the firework display on the cricket field.”

It is interesting to note that a children’s party and a lunch were provided considering that in 1953 many foods were still rationed, including butter, sugar, margarine, eggs. Google tells me that the weekly amount **per person** amounted to butter and cheese, 2 ounces per week (50g), Bacon, ham, margarine, 4 ounces (110g) per week, milk 3 pints. It must have taken a great deal of thought and care in order provide the food. Sadly there are no photographs in the Archive.

Iris Sayer

Information from David Snartt.

Update Charnwood Local Plan.

I just wanted to let you know that the public hearings which have been held as part of the examination process of the draft Charnwood Local Plan 2021-37 have now concluded. The hearings at the Town Hall started in June last year and were put on hold by the Inspectors to consider how the Local Plan proposes to manage issues relating to Leicester's unmet housing and employment need. The Inspectors reconvened in October before the final set of hearings that have just concluded during February.

I did attend the latest hearing sessions on the 14th and 15th February, although I had already sent my written representations to the Inspectors about my concerns in areas that affected my Forest Bradgate Council Ward. I was keen to understand how the examination was moving forward, especially in the areas of the plan I had already raised with the Inspectors.

Next Steps: The Planning Inspectors will now consider everything that has been put before them and will send a letter to the Council in the next couple of months outlining the timetable for public consultation on the main modifications necessary to make the local plan sound. The consultation on the main modifications will be for at least six weeks and is expected to commence in the early summer. Responses are made to the Inspectors for them to consider when writing their final report on the Local Plan. Once the final Inspectors' report is received, the Council can then consider adopting the Local Plan in the autumn. When it is adopted, it will replace the current Core Strategy and the Borough of Charnwood Local Plan and it will be the starting point for all planning decisions going forward.

Council Approves Budget For 2023/24.

Charnwood Borough Council approved its budget for 2023/24 at a meeting on Monday 27th February 2023. The budget sets out the Council's spending plans for services in the coming council year.

The Borough Council Tax remains one of the lowest in the Country and is only a small part of residents' overall Council Tax bill. The budget sees the Charnwood element of an average Band D property rise by £4.78p (3.52 per cent) to £140.47p for the year. People on low incomes can apply for Local Council Tax Support, this gives up to 85 per cent reduction on the whole Council Tax bill.

The Council's budget for 2023/24 looks to spend around £20 million on services for the Borough. The Council is responsible for a wide range of services which include: Collecting recycling and refuse from more

than 70,000 homes in the Borough: Supporting homeless people: Managing open spaces including the Outwoods: Emptying bins, litter bins and street cleaning: Food safety inspections: Licensing of pubs, clubs and taxis: Handling planning applications and strategic planning.

Action to Tackle Fly Tipping/Poor Dog Control.

Nine fines totalling £3,000 have been handed out following reports of fly tipping, dog fouling and poor dog control in Charnwood over the last 3 months. Charnwood Borough Council has taken action as part of its ongoing commitment to look after the local environment and crackdown on those who show a disregard for the area.

If you see any fly-tips across Charnwood or dog problems, you are encouraged to report it directly to the Council by visiting the Council's website.

Residents are reminded to only use authorised waste carriers to dispose of their waste and make sure the carrier has a license from the Environment Agency.

Have Your Say.

Charnwood residents have until midnight on Monday 17th April to register to vote in the local elections in May. Charnwood Borough Council has 52 Councillors across 24 Wards with all seats up for election on Thursday 4th May 2023. Most residents are currently registered with over 130,000 people on the electoral register in Charnwood.

I have previously stated, for the first time photo ID will be required when you visit a polling station to vote. This new requirement has been introduced by the UK Government. It means voters across England will be required to show an acceptable form of photo ID when voting at a polling station. I am hopeful with the amount of different acceptable forms of ID, most voters will be able to vote without applying for a free voter ID. All the information about voting in the 4th May elections, including details of acceptable forms of photo ID and postal voting can be found by visiting www.charnwood.gov.uk/pages/electoralservices or for further help and advice telephone 01509 634546.

Appeal Decision.

I recently received disappointing news from the Planning Inspectorate. Following the appeal hearing that I attended at Hinckley and Bosworth Borough Council (HBBC) about the development of 93 dwellings on land north east of Ashby Road, Markfield, the Inspector allowed the appeal. Therefore, planning permission is granted for this residential development on this site.

The Inspector states in his decision notice that consideration of this appeal is limited to the impact of the development on the land within HBBC

administrative area. Although it results in a failure to accord with policy DH4 and policy M1 of the Markfield Neighbourhood Plan, there would be no substantial harm caused as a result. The development would not therefore undermine the aims of those policies, both of which seek to protect the intrinsic character and beauty of the countryside.

In my view, after reading the decision notice, it seems that because Charnwood Borough Council (CBC) granted planning permission this was a factor in the decision making process. Noting all the dwellings will be within CBC administrative area, with only land within HBBC being a narrow strip alongside the road containing the proposed main access and a tree belt. This makes the land split of approximately 7% in HBBC and 93% in CBC administrative area.

At the hearing I did raise my objections to this proposal, especially that in my opinion, the development didn't fit with the Markfield Neighbourhood Plan policies and the impact this would have on the services and facilities of the village. After receiving the decision, I did write to the Inspectorate to try and find out more about the decision making process. The information I received back was: Unfortunately I am not able to add anything further to this as the Inspector is not able to further comment or explanation of the decision once it has been issued.

Roy Green

LETTING & ESTATE AGENTS

First Floor, 15 The Maltings, Leicestershire, LE12 2JZ

MEMBERS OF THE ROYAL INSTITUTE OF CHARTERED SURVEYORS

Contact us on office@roygreen.co.uk or call (0116) 235 3009

Our Services

Fully Managed – 8% plus VAT

Let only - £525.00 plus VAT

Tenancy set up fee - £250.00 plus VAT
(only payable on New or Change of tenancies)

Members of the Royal Institute of Chartered Surveyors

Up to date integrated property management software

NO EXTRA CHARGES FOR

- Tenancy referencing
- Inventory of property
- Floor plan for advertisement

We have 65 years experience in property management.



 Roy Green Lettings & Estate Agents

 roygreenlettings

 Roy Green Lettings





No crime statistics have been received for March, however, a resident reported the attempted theft of a catalytic converter from a BMW parked on Main Street.

Catalytic converter theft

Catalytic converters are devices fitted to vehicle exhausts to reduce the amount of dangerous gases emitted. They are often targeted by thieves as they contain valuable metals and can be removed in less than a minute.

Catalytic converter theft most frequently occurs in car parks, but they can happen anywhere. Thieves may then sell these converters via scrapyards, online, or ship them out of the country.

Hybrid vehicles are most commonly targeted, as their metals are more valuable, but any vehicle can be at risk of catalytic converter theft.

Signs a catalytic converter theft is being committed

- a vehicle being raised using a car jack in a car park or residential area
- a loud drilling or cutting sound coming from underneath the vehicle

Prevent it

Although catalytic converter thefts are increasing, there are steps that you can take to protect your vehicle.

To keep your catalytic converter safe, you can ask your car dealer for advice on locks or guards that are approved by the vehicle manufacturer and tested to Sold Secure Gold.

Alternatively, try to make sure your vehicle is parked in a garage overnight, or if you have a commercial vehicle, park it in a secure compound. If this isn't possible, park in an area that's well-lit and overlooked and try to park so that the converter can't be easily reached by potential thieves. Vehicles that sit high above the road are particularly vulnerable.

You should also register your converter and mark it with a forensic marker, which will make it harder for thieves to dispose of.

Safe Account Scams

What are 'safe account' scams?

'Safe account' scams are when scammers steal your money by getting

you to move it to another bank account that they control.

They do this by calling people out of the blue and pretending to be from trustworthy organisations like your building society or bank, the police, or even the Financial Conduct Authority. They claim your money is at risk – your account has been compromised or there’s been a security breach – and that you need to urgently move it to an account they’ve set up for you for safe keeping.

The worst part is, it’s you who moves the money, not them. So, when the money is sent to one of these accounts, it may be impossible to recover it. It’s often too late, the money is gone.

How to stop 'safe account' scammers

Stop and ask yourself a few quick questions.

Why would my money be at risk?

Has the caller given me any proof they are who they say they are?

Why are they not just freezing my account?

You'll soon see the scammer's story doesn't add up.

Know that legitimate organisations would never ask you to move your money to another account. Your money is safe in your bank account. Banks and building societies monitor accounts for fraud 24 hours a day, 7 days a week. If they spot something unusual on your account, they'll block your card to stop any card payments and send you a fraud alert message usually by text or telephone call. This is to help keep your money safe and secure.

Remember, you can always hang up the phone and call your bank or building society.

If a call doesn't feel right, hang up. You're not being rude. You're being safe and sensible. Put the phone down on them and call using the number on the back of your card, on a bank statement or on your bank or building society's website. Banks are usually happy to help and confirm whether it was them who called.

If you think you've been a victim of fraud or a scam, report it to your bank/building society immediately.

Wishing you all a safe and crime free month ahead.

Keep 'em peeled.

Best wishes,

Hannah Shaw,

Parish Council Clerk,

Tel: 01530 249945

Email: clerk@newtownlinford.org.uk



News from Newtown Linford Parish Council

Have you looked at the website recently?
www.newtownlinford.org.uk



Well, I think I jinxed the sunny weather by saying 'Spring is definitely on its way' in last month's Magazine. We've had snow, sleet, torrential downpours, frosts, ice and high winds since! I'm hopeful things will start to improve now and Spring is actually on its way! Keep fingers crossed!

Thank you to everyone who attended and supported the Club Tropicana event at the Village Hall on 17th March. Wasn't it fun?!

Our sincere thanks go to resident, Ian White of Bradgate Events, who supported the event and transformed the Village Hall into an 80s night-club for the evening. Thank you also to everyone who helped out leading up to the event and on the night. Every ticket sold for the event will help towards the Village Hall's increased energy costs. At the time of the Magazine going to press, the event had raised £1170 with further funds expected from the cocktail bar sales. Watch this space for a possible future event later this year!

In case you missed it in the last edition of the Village Magazine, here's a reminder of the new mandatory voter ID requirements for the elections in May:

New Mandatory Voter ID requirements

From May 2023, all voters will be required to show an accepted form of photographic identification (photo ID) at a polling station before they are given a ballot paper.

This will affect all voters across Charnwood who vote in person or by proxy, at the next local election on Thursday 4th May 2023. You are not required to provide photo ID for postal voting.

Photo ID you can use

Voters must bring a suitable form of photographic ID to their polling station. Acceptable forms of photo ID will include:

Passport issued by the UK, any of the Channel Islands, the Isle of Man, a British Overseas Territory, an EEA state or a Commonwealth country

Photographic driver's licence issued by the UK, Channel Islands, the Isle of Man, or an EEA state (including provisional)

European Economic Area (EEA) photographic ID Card

Biometric immigration document

An identity card bearing the Proof of Age Standards Scheme hologram

(PASS card)

Ministry of Defence Form 90 (Defence Identity Card)

A Blue Badge

Older Person's Bus Pass

Disabled Person's Bus Pass

Oyster 60+ Card

Freedom Pass

Only original documents are accepted; scanned images or copies will not be accepted. However, if your photo ID has expired it will be accepted as long as the photograph is still a good likeness to you.

No suitable photo ID?

If you do not have any of the accepted photo ID, and you want to vote at the polling station, you will need to apply for a free Voter Authority Certificate. This is a free photographic identification document specific for the purposes of voting.

You will be able to apply for a Voter Authority Certificate in person, by post or online through GOV.UK. CBC recommend that you apply for a Voter Authority Certificate in good time. The deadline to apply for a Voter Authority Certificate in time for the local elections in May 2023 is 5pm on Tuesday 25th April 2023.

Voters who do not produce a Voter Authority Certificates, or valid photo identification will not be allowed to vote on the day.

You can apply for a Voter Authority Certificate through the GOV.UK website via the following link:

<https://www.gov.uk/apply-for-photo-id-voter-authority-certificate>

Alternatively, an application form is available to download via Charnwood Borough Council's webpage via the following link:

https://www.charnwood.gov.uk/pages/voter_id

CBC will accept scanned copies of applications for Voter Authority Certificates via email to electoral.services@charnwood.gov.uk. Paper applications may also be posted or handed in to the Council Offices.

Alternatively, if you would like a paper copy of the application form sent to you in the post, please contact the elections team on electoral.services@charnwood.gov.uk or by calling 01509 634546.

On with more news....

Bob Bown Memorial Field

We await confirmation of a date for the installation works of the new play

park surfacing and play equipment.

Cemetery and Churchyard

Following the heavy snow we had in March, the Cemetery suffered some flooding issues, as did many places once the snow had melted.

Once the ground is dry enough, the grass cutting schedule for 2023 will begin. We are really pleased with our contractor, Firetree, who take great care in keeping Parish Council maintained sites looking so wonderful. Michael will be replacing the border edging in the Garden of Remembrance at the Cemetery once we have better weather and I'll be working with him to discuss preparing a new area for further ash plots once all ash plots in the current section have been reserved.

In liaison with All Saints' Church, an application will be submitted shortly for the installation of a new bench in the Churchyard in memory of Janet Neaverson.

Upcoming Parish Council Meetings

It has been necessary to change the date of the March Parish Council Meeting. The new date is Wednesday 5th April at 7:15pm in the Village Hall.

The Annual Parish Council Meeting and Annual Parish Meeting will be held on Wednesday 10th May from 7:15pm in the Village Hall and everyone, as always, is welcome to attend.

Markfield Lane Wildflower Verge

Work is expected to start on the post and rail fencing at the Markfield Lane Wildflower Verge in the not too distant future. The verge is managed by Newtown Linford Biodiversity and in support of their work, the Parish Council have agreed to the additional grass cutting of a mown pathway through the verge, which will enable residents and passersby to

Stay Fit & Active

Dance Fitness for 50+

The Linford , Main Street

Mon 1:30 — 2:30pm

Are you aged 50+?



Come and join us and improve your fitness level

All levels of fitness are catered for with fun filled sessions to music.

Do you want to keep active as long as you can?

Has your get up and go, got up and gone?

Contact Mo Watson

Tel: 07751 504669

Email: mwkfa@btinternet.com

explore the wildflowers more closely. It is hoped sometime in the future, an information board will be installed with details of all the plants and species spotted in the verge through surveys that are carried out. The post and rail fencing is being funded through the Members' Highways Fund, as well as new Parish Welcome signs at entry points to the Parish and our thanks go to Councillor Deborah Taylor for supporting our requests for funding.

Stay well, stay safe.
Best wishes,

**Hannah Shaw,
Parish Council Clerk.
Tel: 01530 249945**

Email: clerk@newtownlinford.org.uk

Booking of Village Hall

**To book the Village
Hall
Contact**

Hannah Shaw, Parish
Council Clerk

Contributions to Village Magazine

Can we have your contributions for the **May2023** issue by **15th April 2023** please.

**Send to the Editor, Carole Heubeck,
5 Grey Crescent, Newtown Linford (01530 244790).
E-mail newtownvillagemagazine@outlook.com &
heubecks@gmail.com**

Please could you send any emails to the above email addresses. If you do not receive an acknowledgement of your email from the gmail account within 3/4 days - please contact Carole, the Editor direct on the above number to check we have received it. The village email is not checked so frequently but I don't lose articles from there!

The opinions expressed by the contributors are not necessarily those of the Editors and they reserve the right to amend, shorten or not print any article or advertisement submitted for publication. Whilst every effort has been made to ensure the accuracy of the information printed in this magazine, and advertisements are accepted in good faith, no liability can be accepted for loss, damage or claim of any kind incurred by the reader

Printed by Barkers Printers Leicester 0116 2120983

COVERING *Martin Page* YOUR LOCAL

The Newtown Linford Area

Tree



Surgeon

charnwood

Have you considered your trees may need some maintenance from time to time. Are your trees maybe too tall blocking light, unsafe or untidy?

Or maybe you need to remove that stubborn stump.

Do your hedges, Conifers or shrubs need trimming.

With 30 years of experience working with trees in your area, I would be pleased to offer you free advise and a free quotation.

I also sell high quality firewood logs



call me now on

01530 251312

Constantly Recommended



- Fully Insured
- Local family business
- Clear & tidy service



PEST CONTROL

DOMESTIC • COMMERCIAL • INDUSTRIAL



Which?
Trusted trader



**Guaranteed Service
No Add On Charges**

**Wasps * Fleas * Ants * Rodents * Bird
Control * Fly Killers * Fly Screens *
Clinical & Sanitary Waste Disposal**

FOR A FAST, RELIABLE RESPONSE

CALL FREE ON

0116 234 0078

ensuring a pest free environment

www.targetpestcontrol.co.uk | Info@targetpestcontrol.co.uk

MAKES Target

Anstey & District

Est. 1992 Independent Funeral Services

0116 234 0548

We can take care of every detail, advise and help you on each and every step of the way.

- Qualified Funeral Directors
- Floral Tributes arranged
- Hearse, Limousines and alternatives available
- Monumental Service
- Car parking available
- Online tribute and donation profile
- Catering suite
- Chapels of rest
- Funeral plans available
- 24 hour service



Funeral arrangements can be made in the comfort of your own home if preferred.



Golden Charter
Funeral Planning for Life Ltd.

Talbot House, Leicester Road, Anstey, Leicester, Leicestershire LE7 7AT
Email: talbotthouse@ansteyfunerals.com Website: www.ansteyfunerals.com