

Newtown Linford Magazine

ISSUE NUMBER 132

CONTENTS

Church News	3/4, 19/22
Boules	5
Coffee & Cake	6
Easter Flowers	6
Rummage Sale	9
Bradgate Drama Society	10
Choral Society	11
Ramblers	12
Gardening Club	14
Bradgate Park	17
Bluebell Day	18
From the Records	22
Neighbourhood Watch	27
Bradgate Flower Club	29
Friends of Charnwood Forest	35
Village Parking	35
Village Hall News	36
Damaged Verges	37
Parish Council	38



March 2016



David Allen
For Your
VERMIN CONTROL



RATS, MICE, MOLES, RABBITS, WASPS, ANTS, WOODWORM.

**DO YOU HAVE A PROBLEM WITH ANY OF THESE?
LET ME SOLVE IT FOR YOU!**

10 ASIIBY ROAD, SHEPSHED, LE12 9BS
Telephone: 01509 502664

24 HOUR SERVICE

Consult

WALTER MILES

(Electrical Engineers) LTD

Est. 1928

For All Your Electrical Requirements

**LIGHTING, HEATING, POWER, REPAIRS, RENEWALS
AND MAINTENANCE**

Member of the Electrical Contractors' Association and N.I.C.E.I.C

Office and Works Marshall House, West Street, Glenfield, LEICESTER, LE3 8DT
Telephone 0116 287 2400 Fax 0116 287 252
E-Mail office@waltermiles.co.uk

Horseshoe Cottage Farm

Luxury bed and breakfast accommodation



Approved by the British Hospitality Association
and the British Hospitality Association
of the year
for 2011 & 2012

Five stars in terms of the
Quality of the service &
availability of the
Eco-Cottages



Rosecliffe Road, Hallgates, Cropston, Leicestershire LE7 7HQ

Tel: + 44(0)116 2350038

Email: linaljee@horseshoecottagefarm.com Website: www.horseshoecottagefarm.com

The Bradgate

Group Parish



A friend of mine, Vic Jackopson, has an extraordinary Ministry among prisoners, having been one himself when he was just 18. Vic knows exactly what being in prison is like and he also knows how discovering God's love for you can be a life-changer. Vic discovered this love by reading about it in the New Testament which was in his prison cell (thanks to the Gideons). Reading the Bible started as a way to pass the time, but Vic became fascinated by this Jesus in the Gospels who seemed to care about everyone with disarming openness and enormous authority. What he said mattered, what he commanded miraculously happened, what he did showed unlovely people that they were in fact dearly loved and most important. Could that be true for Vic too? Could Jesus love this teenager who had grown up in care homes and didn't think that he had any value? This knowledge changed Vic as a person and then, not surprisingly, changed the direction of his life.

As Vic read of Jesus' arrest and sentencing to death, he felt the outrage of watching a good man being stitched up and unjustly condemned by the authorities. Vic knew that there was no comparison between his prison sentence and Jesus' sentence; Vic deserved his, Jesus didn't. So why didn't Jesus fight it? Why did he take this journey to Jerusalem? Why did he put himself in danger? Why didn't he save himself?



Nearly 60 years later, this is how Vic explained it to a gathering of about 100 prisoners in the Pryluky Boy's Prison in the Ukraine: As he talked about why Jesus' death was so important, he called one of the older boys to the front. "*Take off your shirt,*" said Vic. To the amazement of everyone, Vic also took off his shirt and had the boy put it on, while he put on the boy's prison uniform shirt. Once dressed, Vic said, "*Okay, so when we have finished here this morning, you go out with the team and enjoy your freedom. I'll stay here and finish your sentence.*"

Everyone saw the point immediately as Vic stood there in his newly acquired dirty, sweaty prison shirt. *"This is what Jesus did for you on the cross. Jesus took head on the evil and the wrongdoing that imprisons us and kills us and let it kill him. Why? To take the power out of it; to replace it with the power of God's love in our lives; to show us that we matter more than we can imagine."*

Easter is more complicated to explain than Christmas, isn't it? The baby born in a manger is now dying in our place and winning a victory over death and over all that can destroy us.

Maybe on this Lenten journey between now and Easter you can take an honest look at where you are imprisoned. It most likely won't be on the surface of your life but much deeper: a fear, or a situation you can't escape, a relationship, maybe a hate, or a history. Jesus has died for this. He has put on your prison shirt in order to set you free. You might still have to live with the circumstances but your heart can be free and you can know that the power lies not in the prison but in God's love for you. And if you have never read a Gospel all the way through, why not do that this month, using a modern translation which is easy to read. And look out for the love and freedom that Jesus offers everyone. Including you.

Rev Louise Corke

Plumbing & Heating

- City & Guilds qualified
- 25 Years Experience
- All Plumbing & General Maintenance Work Undertaken
- Reasonable prices
- Free Estimates

References available from local satisfied customers.

Nick Phillips Bradgate Road, Markfield

Tel: 01530 244981 Mob: 07779 698292



VILLAGE DIARY

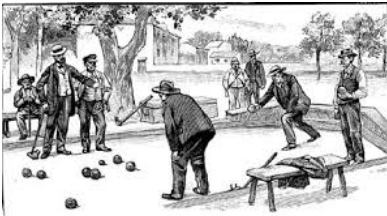
March 2016

4th/5th Music of the Masters, Choral Society
6th Mothers Day Church Service
12th Brownies Rummage Sale
12th Ramblers
14th Friends of Charnwood Forest
20th Palm Sunday Church Service
21st Parish Council Meeting
27th Easter Sunday Church Service

Regular events

Monday afternoon	Mature Movers fitness class V. Hall
Mondays 8pm at the Church	Bell Ringing
4th Tuesday of the month	Gardening Club
3rd Wednesday of the month	Ladies Luncheon Club
Thursdays 11.15	Coffee Mornings for all, Village Hall
Thursdays 6.30	Brownies, Sunday School Rooms
3rd Thursday	Gentlemen's Lunch Club
Boules (will restart in May)	Phone 01530 245373 for more info

NEWTOWN LINFORD BOULES



Welcome to fourteenth season

TUESDAY 10th MAY

TUESDAY 7th JUNE

TUESDAY 5th JULY

TUESDAY 2th AUGUST

TUESDAY 6th SEPTEMBER

Meet outside the Village Hall at 6.20pm (September 6.00pm).
All matches to be played at The Blue Bell Inn, Hoby, phone number
01664 434247.

In the event of rain the skittle alley will have been booked for us.

CONTACT. DICK HOWARD 01530 245373

Please confirm on the previous day (Monday) if you are attending so that
I can book your meal.

Coffee & Cake @ Newtown Linford Village Hall

Thursday Morning 11.15am - Free

All Welcome - All Ages



March

3rd - Amanda Sculthorpe & Vicky Lightfoot 242445
10th - Joe & Claire Costello 249613
17th - Betty Blythe & Christine Chlorton & School 242512
24th - Casey & Andrew Pearson & Jenny Cole 249259
31st - Angela Roach, Judy Rowe, Pam Mcmorran & Shirley Baxter
242289/242201/244384

April

7th Betty McChrystal & Sue Howard 244363 - 245373
14th Katie Cook & Haley 0116 2362521
21st Sarah Raynor & Carmel 249206
28th Carolyn Turner & Charlotte Jackson 249173

Please swap with someone else if you are unable to do your duty. Pass on the hall key to the next people on duty.

**An opportunity everyone to catch up on village news
and activities and to meet your fellow neighbours**

EASTER FLOWERS

During the year and on special Church days the willing band of ladies keep the Church bedecked with lovely flowers, but we wondered if there was anyone else who would like to give to the flower fund so that this Easter (27th March) we can have lovely lilies in our Church.

If you would like to, please hand your donation to Sue Howard, Main Street, Janet Neaverson, Grey Crescent, or in Church to Clive Rowe or leave in an envelope on the offertory dish. **Janet Neaverson**



Antique Valuation Day

Newtown Linford Village Hall

Friday 8th April 10am–3pm

By Appointment



Come along with your items and get an expert opinion from our Valuation Team.

Gildings Auctioneers are visiting Newtown Linford Village Hall on Friday 8th April to hold free valuations open to the public.

This event will take place all day from 10am until 3pm.

Please contact us to make an appointment prior to visiting.
01858 410414 | sales@gildings.co.uk

OUR VERY FIRST SALE
WAS HELD AT NEWTOWN LINFORD
VILLAGE HALL OVER 35 YEARS AGO

CELEBRATING



REVISITING WHERE IT ALL BEGAN

gildings
auctioneers

MARKET HARBOROUGH SALEROOM
THE MILL GREAT BOWDEN ROAD LE16 7DE
T: 01858 410414 SALES@GILDINGS.CO.UK

GILDINGS.CO.UK
Q f t i o



THE BRADGATE

NEWTOWN LINFORD

37 Main St, Newtown Linford, Leicestershire LE6 OAE

01530 242239

STONEBAKED PIZZA




2 PIZZAS FOR £16

Available
Monday to Friday
12pm till 7pm

Fixed Price Menu

2 Courses for
£12.50

3 Courses for
£16.00

Available
Monday to Thursday
12pm till 3pm & 6pm till 7pm



STEAK NIGHT

Every Friday from 6pm

2 x 8oz Rump Steaks & a bottle of wine **£32**

2 x 10oz Ribeye steaks & a bottle of wine **£39.50**



DELICIOUS PIZZA FRESH & HOT!

FAMILY PIZZA DEAL

2 ADULT PIZZAS & 2 KIDS PIZZAS

£20

Available Monday to Friday
4pm till 7pm

BRADGATE BUCK

Psssst! Mum...Dad... School is done for today. Bring the little ones here, have a pizza & we'll do the clearing up.



1 SXC 2 SXC 2 SXC

THE PARLOUR




 contact@thebradgate.com
 www.thebradgate.com
 @newtownlinford
 TheBradgate



RUMMAGE SALE



NEWTOWN LINFORD BROWNIES

Saturday 12th March 2016

1.30pm in the Village Hall



Admission 50p

Tea and Home Made Cakes



Village Hall doors will be open for dropping off rummage from 9.30am on date or sale, or collection can be arranged

07432 302983.



Hilary - Brown Owl.



Bradgate Drama Society
presents

The Gioconda Smile

by Aldous Huxley

Thursday 5th, Friday 6th & Saturday 7th May

at 7.30p.m.
in the Village Hall



Tickets £7

from Toby Manning
01530 245298 ptm@tobymanning.co.uk

For this year's Spring production Bradgate Drama Society is presenting a classic 'whodunit', Aldous Huxley's 'The Gioconda Smile'. In 1940's suburbia, Emily, the invalid wife of rich art dealer Henry Hutton, dies in mysterious circumstances. Did she die at Henry's hand to make room for a younger woman? Was the Nurse the culprit or was someone else involved in her demise? Follow the twists and turns of the plot through to its final denouement as the suspect sits in the condemned cell. Performances will be on Thursday 5th, Friday 6th. and Saturday 7th. May at 7.30p.m. in the Village Hall. Tickets are £7, available from Toby Manning (01530 245298 or ptm@tobymanning.co.uk)



GLORIA IN EXCELSIS DEO

Music of the Masters

Bach, Handel, Haydn

Newtown Linford Choral Society

Orchestra

&

Mike Shaw, Karen Silverwood

Bach Double Violin Concerto

7.30pm, Friday 4th March & Saturday 5th March 2016

St Philip & St James Church, Ratby

Tickets: £10 (Children £5)

Newtown Linford Stores

Ratby Post Office

&

Peter Sayer 01530 243822

Registered Charity No. 1079843



Newtown Linford Choral Society

Village Ramblers

MONTH	LEADER
12 March	Toby & Felicity Manning
9 April	Penny Neaves
14 May	Joe & Claire Costello
11 June	Glenis Meredith/John Castle (Day Walk?)

On 13 February Toby led a small group of 6 along the new path around Broombriggs Farm estate in Woodhouse Eaves. Leicestershire CC are to be congratulated on producing a nice new path with superb views. The walk ended with a visit to the old windmill (the photograph shows the party on the viewing platform) and admiration of the recently planted community orchard.

The March walk will be in the Rothley and Thurcaston area, led by Christine Hall. Meet outside the Village Hall at 14:00, or at the Blue Bell in Rothley at 14:15.

New members are always welcome: all you need is stout footwear and the ability to walk 4/5 miles. Well behaved dogs are also welcome, but must be under the owner's supervision and on the lead wherever there is livestock or nesting birds.

Unless otherwise notified, all walks depart from opposite the Village Hall at 2pm.



A warm welcome for everyone at



THE
LINFORD

66 Main Street, Newtown Linford
Tel: 01530 244012
thelinford.co.uk



Free WiFi



Pool Table



Free Function Room Hire*



Quiz every Wednesday



Guest Beers

**When booked with bar*



Ample parking

**£1 off all draught beers
Fridays between 7 and 9.30pm**

sky SPORTS

NOW SELLING CRAFT BEER

BT Sport

Dogs with well behaved owners welcome



Paint Wizard

All Types of Vehicle Body Repairs



Panel Resprays from £165

Scratch Removal from £45

Stone Chip Repair from £45

Windscreen Repair from £35

Colour Restoration From £65

Alloy Wheel Refurbishing from £45

Machine Polishing & Glaze from £100

Colour Code Bumper Resprays from £165

Colour Code Wing Mirror Resprays from £45

Free Collection & Delivery Service Available

All prices are plus VAT charged at the prevailing rate

07850 456696

Proprietor Paul Beaver, Grey Crescent, Newtown Linford



Newtown Linford Gardening Club

We still have many days of unseasonably warm weather but with lots of rain. Those of us with predominantly clay soils find much of the garden too wet to walk on, yet several plants will soon need their spring pruning. However, we are always warned not to act too hastily as winter weather can come before Easter to catch us unawares, so maybe caution is the gardener's word of the month.

We had a superb talk from Jeff Bates on clematis and other climbing plants at our meeting in January. This is the third occasion he has come to talk to us and he never disappoints. There were around seventy members in the Hall on that occasion and once again the new screen proved to be a timely acquisition.

Our meeting on 22nd March welcomes Andy McIndoe of Hillier's Nurseries, who have won a total of 70 Chelsea Gold Medals for their exhibits. Hillier's Nurseries are probably the most famous Garden Nursery in the country and we are delighted that Andy is coming to our village. We are inviting visitors to join us on this occasion and tickets for the event will be £10. They can be obtained from the Secretary and we hope some readers will come and join us on this special occasion.

We have welcomed a large number of new members this year and will be pleased if others want to join us. If you are interested in our activities just contact the Secretary (tel. 242452 or e-mail 01530242452@talktalk.net), or come to one of our meetings to see how you like it before making a commitment (£2 for visitors). Alternatively give us a ring and ask for a copy of our programme for the coming year and we will be pleased to send one to you.

Anne and David Couling



Cooks Farm Shop

Markfield Lane, Newtown Linford, Leics
LE6 0AB, 01530 242214
www.cooksfarmshop.co.uk



We stock small and large bags of – Bradgate
Wild Bird* Superior Wild Bird* Robin &
Songbird Mix* Peanuts*Sunflower
Hearts*Niger Seed* Peanut Granules*Suet
Balls*Suet Pellets* Feeders and Treats plus
many many more!!

See our website for prices www.cooksfarmshop.co.uk

Top Quality Fruit & Veg
Beef, Pork, Lamb, Chicken, Bacon, Sausage
Pate, Cold Meats, Pies Etc
Clarks ready meals
Fresh bread delivered from a local bakery
Milk – Cream – Butter – Cheese – Yoghurts
Free Range Eggs
Relishes, Pickles, Preserves
And lots more good things to eat

Open:

Mon - Fri 9am - 5.30pm

Sat 9am - 5pm

Sun 10am - 1pm



New landscaped
garden

Dogs welcome inside

Log burning stoves

Under new ownership

Homemade cakes
& scones

All-day breakfast
& lunch menu



We're open
9am – 4.30pm
Monday – Sunday



The Old Post Office Tea Room & Store

550 Bradgate Road, Newtown Linford, Leicestershire, LE6 0BH
Tel: 01530 242709 [f /OldPostOfficeTearoomBradgateRd](https://www.facebook.com/OldPostOfficeTearoomBradgateRd)

Charnwood...we have you covered



ROY GREEN
CHARTERED SURVEYORS
LETTING & ESTATE AGENTS

SELLING?

Accompanied viewings

Open 7 days a week

Free KPC and Floorplan



Specialists in probate valuations



Vendor care and sales progression negotiator



Weekly regular updates

LETTING?

Full Management for 8% plus VAT.

All properties advertised with a Floor Plan, no additional charges.

We don't add a "Service Charge" to Contractor/Third Party Invoices, you get charged what the contractor charges us.

We do not charge a "Set Up", "Tenant Find" or "Renewal" fee under our Full Management Service.

ARRANGE YOUR FREE SALES/LETTINGS VALUATION BY CALLING

Anstey Office

15 The Nook, Anstey LE7 7AZ

0116 235 3009

Barrow upon Soar office

5 High Street, Barrow upon Soar LE12 8PY

01509 274474

News from the Park Easter Already!



They say that, as you get older, time seems to pass more quickly. In that case, I must be ageing at an alarming rate as we barely seem to have taken down the Christmas decorations and now the first Sunday following the full moon after the Vernal Equinox is nearly upon us. I mean, of course, that it is nearly Easter! I have written before about the importance of places like Bradgate in reconnecting people to nature and the natural cycles of the seasons and there is nothing like the arcane formula for calculating the date of Easter to remind you of that. I like the fact that the calendar on my computer may stretch forward into infinity (and seems to be filling up as well) but if I want to find out the date of Easter without an internet connection so I can Google it, I need to have recourse to a set of tables of the phases of the moon – the same technology that was available to the prehistoric inhabitants of the Park.

Easter for us represents the start of the 'season'. The Rangers move onto their summer shift pattern, the guided walks programme starts up and the ruins are open on four days each week. Tree work finished at the end of February to avoid the start of the nesting season and the venison season is coming to a close.

I was honoured in mid-February to be asked to say a few words of welcome at the Collation and Induction Service for the new Rector, the Reverend Richard Trethewey. I was pleased to be able to welcome Richard and Ruth on behalf of the Trust and tell him that I felt we face a similar challenge – to make a venerable and much-loved institution relevant to a new generation without spoiling the very things that make it special to so many people. With all the changes on the Park over the past few years we ask one question before deciding whether or not to proceed with our latest bright idea: "Will this simply ruffle a few feathers because it has never been done before or does it threaten the essence of what makes this place special?" If it is the latter then we pass over that idea and go back to the drawing board.

One idea that was introduced in 1997 but still continues to ruffle a few feathers is Pay & Display parking. The County Council has recently extended the double yellow lines outside the Hallgates entrance, which will hopefully put a stop to those who were intent on parking for free regardless of the danger posed to both motorists and pedestrians by inconsiderate roadside parking. We continue to press home the message that we are a charity and 80% of our income comes from our visitors, over half of which is from parking, but there is still a vocal minority

who complain about having to pay to park. Our friends in the City and County Councils have supported us generously over the years but, now that times are tight, it is right that they concentrate their diminished resources on their own essential services rather than funding an independent charity that has the ability to generate its own income. Thankfully we have been on a programme of 'managed decline' in funding that has seen support from the councils reduced from 50% to 3% over 20 years rather than through swingeing cuts. Pay & Display parking, which represents 45% of our gross income, is now vital to the Park and Trust's continued survival.

This year we will be carrying out a comprehensive survey of our visitors through a range of media including online surveys, face-to-face interviews and touch screen feedback terminals in the tearooms and Visitor Centre. Despite welcoming over 500,000 visitors every year, we know very little about them so we will be looking to find out some information about who our visitors are, where they come from, why they visit and how they think we are doing. We look forward with interest, and some trepidation, to the first results coming in after Easter.

I look forward to seeing you in the Park.

Peter Tyldesley



Leicester Lions Bluebell Day

On Sunday 8th May, Leicester Lions invite you to Walk Among the Bluebells in the grounds of Heyday Hays, 240 Markfield Lane, Markfield LE67 9PS. Open from 11am to 3pm.

Wander through more than 14 acres of beautiful woodland along well marked trails amongst the bluebells. Bring the Children, Grandchildren, the whole family! Afterwards, sit and enjoy a cup of tea/coffee and a cake, or buy some plants, books or home made produce. There is plenty of free car parking space and admission is only £2 for adults, £1 for children (under 5's free).

All proceeds to Parkinsons UK.



Farewell Party to Peter and Sue Hooper 12th February



All Saints Church has seen a very busy month of February. It started with the Farewell Party for Revd Peter and Sue Hooper on Friday 12th February at the Linford Club where parishioners enjoyed a lovely bring and share supper and enjoyed entertainment from various Church Members. We all had a good evening as we bid a fond farewell to Peter and Sue as they prepare to start Ministry in the Framland Deanery near Melton. This was followed on Sunday 14th

by a Confirmation Service where Bishop Christopher joined us for the Sunday Worship in church . Photo on page 22.

Sunday 21st February saw parishioners welcoming Revd Richard and his wife Ruth to their first service at Newtown. We wish them well

BRADGATE GROUP SUNDAY SERVICES

March 2016

DATE	NEWTOWN LINFORD	GLENFIELD
6th March Mothering Sunday		9.00am Holy Communion (RT)
	10.30am Family Service (RT)	10.15am Holy Communion (BH)
		6.30pm Evening Prayer (RT)
13th March 5th Sunday of Lent	8.00am Holy Communion (RT)	
	10.30am Holy Communion (JW)	10.15am Holy Communion (RT)
		6.30pm Compline (RT)
20th March Palm Sunday		9.00am Holy Communion (RT)
	10.30am Holy Communion (RT)	10.15am Holy Communion (BH)
		6.30pm Holy Communion (RT)
27th March Easter Sunday	8.00am Holy Communion (RT)	
	10.30am Family Communion (JW)	10.15am Holy Communion (RT)
		6.30pm Evening Prayer

MIDWEEK COMMUNION SERVICES—March

NEWTOWN LINFORD	Thur	9.30am	3rd	
GLENFIELD	Wed	9.30am	2nd	9th 16th 23rd 30th

CHURCH REGISTER NEWTOWN LINFORD



Weddings

None

Baptisms

7th February ~ Jenson Adam Salter

We welcome them in to the Church Family

Funerals

25th February ~ Kathleen Lloyd Prince, Markfield Road,
Newtown Linford



We extend our sympathy and prayers to the family and friends, and pray that they may find peace through faith in Jesus Christ our Lord.

Church Contact Details

Richard Trethewey
Rector of St Peter's, Glenfield, and All Saints, Newtown Linford
0116 287 1604

Email: richard@stpetersandallsaints.org.uk

Parish Office: Bekki Williamson (9am - 11am weekdays)
0116 239 3768 Email: office@bradgateteam.org.uk

Regular Events - Bell ringer's practice: Monday 8pm



Village Records

The village records started as the WI Scrapbook in 1945 by Marion Richardson using newspaper cuttings and the occasional photograph. Betty Patrick picked up the reins when Marion died. When the WI finished, I have carried on the records from Lucille Thompson, now concentrating on village items. I rely on villagers letting me have information of functions to add on to the newspaper items and the Village Magazine. I am not out and about much these days so please let me have all you discover.

Janet Neaverson, 6 Grey Crescent. Neaverson.cj@talktalk.net
Otherwise "From the Village Records" will not have topics to remind you of village life over the years.

Janet Neaverson

MARTIN ALLEN

**FLOORING &
FRENCH
POLISHING**

**YOUR LOCAL
FLOORING SPECIALIST.**

All timber floors laid

**All existing timber floors sanded
and refinished**

Any colour or finish

**Free quotations
call Martin.
0116 2165107**

SYKES JEWELLERS

**WATCH, CLOCK &
JEWELLERY REPAIRS**

**WATCH BATTERIES AND
STRAPS FITTED WHILE
YOU WAIT**

**8 BRADGATE ROAD, ANSTEY
TEL: 0116 236 2510
sykesjewellers.co.uk**



HYPNOTHERAPY

MARGARET GEE DAH Hyp

Confidential, professional and friendly help with

Stress Management Anxiety and Worry
Fears and Phobias

Relationship Issues Stop Smoking

Lack of Confidence and Self Esteem

Weight and Body Image Problems

And more.....

Charnwood House, 516 Bradgate Road
Newtown Linford, LE6 0HB

Please call for more information or to book an appointment

01530 242958

MARGARET HENDERSON

6th May 1929 – 11th January 2016

Margaret was born in Stockton on Tees the younger daughter of Leonard and May Spittlehouse and the grand-daughter of Fred Spittlehouse, a skilled musician, a crack marksman and the Sergeant Major and Band Leader of the Durham Light Infantry. When her father was away during the war manning anti-aircraft defences Margaret and her older sister Joan went to stay with their uncle Harold who was head groom at Raby Castle in the Durham hills. Raby was a real 600 year old castle with battlements, walled gardens and lakes.

These were magical moments with Margaret watching her uncle in his bowler hat and polished boots schooling the horses. Thus began her life-long love of horses. She is seen here in the photograph riding Tamburlaine (known as Tam) who she kept in the field opposite their home on Groby Lane.



Margaret was very adventurous going to work on a farm in Denmark whilst still in her teens. She met her husband Peter, whilst walking on the moors. They married on 28th May 1956 moving to Nettleham in Lincolnshire. They started a family but sadly lost their first born very soon after birth. Ian and Tim followed and the family enjoyed many exciting moments such as touring France in an old Jag. They moved to Sheffield for a while and eventually came to Newtown Linford for over 40 years. They joined in village life to the full belonging to the Luncheon Club and taking part in the 1950's pageants. Margaret painted and wrote poems. One of her water colours is included in the Millennium picture which was printed and given to every household in the village. The original hangs in the Church.

A few years ago Margaret and Peter moved to Rothley to a smaller more manageable property. They returned to the Village for events for a while but sadly Peter developed Alzheimer's and Margaret experienced serious ill health, eventually having to separate for the first time in sixty years and live in different nursing homes. Peter passed away a few weeks ago and Margaret recently passed peacefully surrounded by her family in the Cedar House Care Home at Rothley.

KEITH SMITH (ANSTEY) LTD EURONICS

6 STADON ROAD ANSTEY LE7 7AY - TEL: 0116 2362395 - sales@keithsmithltd.co.uk

FAST FREE LOCAL DELIVERY



BOSCH SMS50T02GB

- Dishwasher
- ✓ 12 Place Settings
 - ✓ 5 Programmes
 - ✓ Half Load
 - ✓ Noise Level 50db
 - ✓ A+AA Rated

Now Only **£299.99**



BOSCH WAB28162GB

- Washing Machine
- ✓ 1400rpm Spin Speed
 - ✓ 6kg Load Capacity
 - ✓ A+++AB Rated
 - ✓ Express Wash
 - ✓ 15 Programmes

Now Only **£319.99**



HOTPOINT WMAQL741P

- Washing Machine
- ✓ 1400rpm Spin Speed
 - ✓ 7Kg Load Capacity
 - ✓ Quick Wash
 - ✓ 16 Programmes
 - ✓ A+AB Rated

Now Only **£299.99**



BOSCH KGN34VW24G

- Fridge Freezer
- ✓ Frost Free
 - ✓ 191/127 Ltrs
 - ✓ 3 Clear Drawers
 - ✓ A+ Rated
 - ✓ H185 x W60 x D65

Now Only **£399.99**



EFF U12S53N3GB

- Double Electric Oven
- ✓ Multifunction Cooking
 - ✓ A-20% Rated
 - ✓ 67 litre Main Oven
 - ✓ CircoTherm Fan
 - ✓ H88 x W59.4 x D55

Now Only **£529.99**



EFF B12S53N3GB

- Single Electric Oven
- ✓ Multifunction Cooking
 - ✓ A-20% Rated
 - ✓ 67 litre Main Oven
 - ✓ CircoTherm Fan
 - ✓ H59.5 x W59.5 x D55

Now Only **£349.99**

Fitted Kitchens

We are pleased to announce that we are now agents for A.W.E Kitchens and Bedrooms Who specialise in Bespoke made to measure kitchen & bedroom furniture

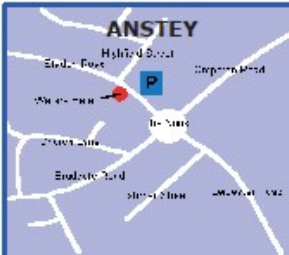
Please call in for further details

Free Professional Installation*

Free Removal of Old Appliance

Free Removal of Packaging

*To Existing Fittings





Have You Heard About The Grey Lady Kitchen & Deli?



Our restaurant The Grey Lady Kitchen & Deli is a hidden highlight, loved by locals and people lucky enough to find us driving past. Our focus is good homemade food, sourced locally from our outstanding suppliers so you can be assured that all the boxes are ticked.

Opening Times

Mon—Sunday 9am-5pm
Friday Evening For Fish & Fizz 6pm-9.30pm



Beat the queue
telephone your
order on:

01530
245 801

Friday Evenings Enjoy Fish & Fizz for £12pp

Grey Lady Kitchen & Deli, 544 Bradgate Road, Newtown Linford, Leicestershire, LE6 0HB

Telephone: 01530 245 801

Email: info@thegreyladydeli.co.uk

<http://www.thegreyladydeli.co.uk/>



Have You Heard About The Grey Lady Restaurant?...

Nestled in Newtown Linford in the heart of Charnwood Forest overlooking Bradgate Park, yet less than 20 minutes from Leicester. Set in three acres with an enviable outside drinking and dining area overlooking the forest.

Fixed Price Lunch Menu

12-2pm Mon-Sat

2 Courses for £15

3 Courses £18.50



Opening Times

Mon— Sat Lunch 12pm-2pm

Mon—Sat Eve 6pm-9pm

Sunday 12pm-3.30pm

The Grey Lady, Sharpley Hill, Newtown Linford, Leicester,
LE60AH

Tel: 01530 243558

info@the-grey-lady.co.uk

<http://www.the-grey-lady.co.uk/>



Newtown Linford Neighbourhood Watch - A member of the Parish Council



I have not been notified of any crimes this month and I have received apologies from our PCSO Chris Kendall that he will not be on duty and therefore will be unable to attend our Parish Council meeting on 15th February.

Sir Clive Loader will be finishing his term as Police Crime Commissioner for Leicestershire very soon. The Conservative candidate is Harborough Councillor Neil Bannister who is a senior prosecutor for the CPS. UKIP has chosen former Tory Leicestershire County Councillor David Sprason. Labour has chosen Lord Willy Bach who practised as a Barrister in Leicester and I can remember sitting with him in Crown Court a number of times as his instructing solicitor. I have been retired a good few years now and I do not think that practise happens any more.

I have been able to deliver three new Welcome Packs these last few weeks. Please remember to let me know if you have a new neighbour. If you deliver the magazines perhaps you can let me know if you have a new resident. I know a few of you are very good at letting me know and even actually deliver them for me. For this I am very grateful.

The dates for speedwatch this year are from the 30th May and 29th August each for two weeks. I have been inundated with volunteers (in my dreams) Come on village residents, Roecliffe Road is putting us to shame.

Pam McMorran

NHW Co-ordinator – pam@riverlyn.freeseve.co.uk

How to contact the Police

All incidents are to be reported to the Police and not the Beat Team **by calling 101**

They will then access the situation and deal with the situation as they see fit. This may involve a vehicle from another area

If you wish also advise our NHW coordinator who will circulate if appropriate. The Beat Team can no longer respond directly





Garrett-Long
solicitors



For all of your legal Requirements locally

We can help you with the following services:

- Buying & Selling a Property
- Tenancy Agreements & Disputes
- Transfers of Ownership
- Re-Mortgages
- Lasting Power of Attorney
- Wills & Probate
- Accident & Injury Claims
- Debt Recovery
- Divorce & Separation

Free initial advice and a competitive quote call

0116 2364875

Florence Villa, 5 Leicester Road, Anstey, LE7 7AT

Bradgate Flower Club

Bradgate Flower Club held its final AGM on Wednesday 13th January. After a short Meeting to wind up the Club's business, a full turn out of Members sat down to a convivial meal in the familiar setting of Newtown Linford Village Hall. Each table



was beautifully set with a floral centrepiece in yellow and red with an excellent meal served by the catering team.

Lilian Coleman, who jointly founded Bradgate Flower Club twenty seven years ago, thanked the Committee for maintaining the high standards over recent years. Although a sad occasion for her, Lilian felt that "after a year of excellent demonstrations by well-known floral arrangers, this was a fitting end to the Club's social and creative activities".

Despite the formal closure, those present are looking forward to meeting again for a wicker workshop in Spring and a reunion trip and lunch later in year.

Geraldine Abbott

Shuttlewood Clarke

Social Media and protecting your identity How to use Facebook and Twitter and keep safe.

Learn more about using social media on your tablet or smartphone! Our session will also include tips on how to protect your identity online.

Join us on Tuesday 8th March from 10.30am - 12.30pm at Ulverscroft Manor - Booking essential - £3.50 to include tea and cake!

For more details please call Helen or Kathleen on 01530 244914

- See more at: <http://www.shuttlewood-clarke.org/blog/2016/01/social-media-training-protecting-identity/#sthash.vh7PCFIS.dpuf>

E.W. Goddard & Sons

(Established 1970)

**QUALIFIED PLUMBERS
Bathroom and Tiling
Specialists**

**All Building Work
and Renovation**

305 Markfield Lane
Markfield LE67 9PR

Telephone

**01530 245316 or 0116 2311672
07961 319908 or 07961 319907**

Peter Henton

**Domestic Appliance
Repairs**

Ex Zanussi Senior Engineer

Tel 0116 2896529

Mobile

07711 265414



**Professional carpet &
upholstery cleaning and repair
services**

- ◆ Curtains cleaned in situ
- ◆ Expert spot & stain removal
- ◆ Guaranteed 5 year anti-stain policy
- ◆ Hand finishing of swags & tails
- ◆ Mattresses deep cleaned
- ◆ Pest control, unpleasant or destructive pests removed

Telephone 0800 328 2927

www.safeclean.co.uk

**PRIVATE AND
COMMERCIAL**

INTERIOR / EXTERIOR

A.B. SHERRIFF

Established 1988

**PAINTER &
DECORATOR**

**42 BRADGATE DRIVE
WIGSTON, LEICESTER**

Telephone 0116 288 1048

Mobile: 07719 366 569

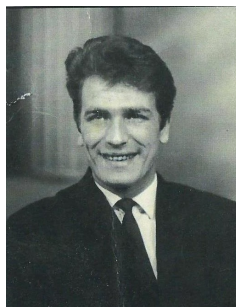
Charlie North RIP

13th Feb 1941-7th January 2016

Penny and the family want to thank you all for your prayers, flowers, messages of condolences and for attending Charlie's funeral at All Saints Church and the Wake afterwards in the Linford Club.

Special thanks to Reverend Peter Hooper for his comforting services

God Bless you all.



HAPPY NEW YEAR!! I hope this incessant rain and cold isn't driving you all totally bonkers, it's not the most 'encouraging' weather to get out and exercise – LOL!!! You can still do some great bodyweight exercises in the comfort of your own home, such as press ups, squats, planks and lunges. Of course, clean and healthy eating is also a huge part of keeping the body in tip top form and I'd like to share one of my new and very simple recipes with you.



SWEET POTATO PANCAKES (as breakfast or snacks)

This recipe couldn't be easier. Bake a whole, large sweet potato. Once cool, mash it up and mix with 2 whole eggs plus 2 extra egg whites. I like to add 2 tablespoons of either gluten free plain flour or ground almonds but it isn't necessary. Finally, 1 tsp of cinnamon and mix well. Warm your frying pan, take a large spoon and drop some of the mixture into the pan making a circular shape with your spoon. Wait until bubbles appear on the top side before flipping over. These pancakes should be about the size of a saucer. They are so yummy you don't actually need to add any toppings to them but if you do feel the need to sweeten them a little, just stick to a LITTLE pure maple syrup instead of white sugar.

The health benefits of these tasty treats are numerous. Sweet potatoes contain Vitamins B6, C and D. They are a great source of iron, potassium and beta carotene. Each egg yolk contains seven vitamins: B6, folate, a B vitamin, B-12, A, D, E and K. Egg whites are a great source of protein. Cinnamon, one of my favourite spices, helps to regulate blood sugar. If you'd like to see more of my recipes, you're welcome to follow me on Instagram – I'm Forestfitstudio. I usually post recipes a couple of times a week.

For any questions, please email me at Forestfitstudio@gmail.com.

Thanks, Jacqui x

Allan Cole

The photo may look gruesome but the story is amazing. I thought the time has come to tell you about one of our residents and his family to which they have agreed. Dr. Allan Cole with his wife Jenny have lived on Groby Lane for a number of years now. They have been on our NHW emailing list from the time they came to the Village. Around 4pm on 19th October Allan had a serious gliding accident at The Gliding Centre in Husbands Bosworth. He was airlifted to University Hospital Coventry and put in a medically induced coma. The crash investigators were amazed he was alive.



He broke virtually every bone in his body but miraculously had no brain or internal organ damage. He was subsequently transferred to the Leicester Royal Infirmary which is where he practises as a Consultant Anaesthetist and was a former Medical Director of the University Hospitals of Leicester NHS Trust.

Jenny started a blog so that all their friends and relations both here and all over the world could read about the medical care and amusing incidents along the way. To date it has 225 followers. All the bones have mended except for long term problems with both feet. Allan feels strongly that it's important to treat the whole patient, not just the injury, and so has for some time felt that amputation of his left foot was the best treatment option. His colleagues at the Royal Infirmary came round to this way of thinking and this photo was taken two days after.

This is an extract from the blog by Jenny: - The operation went well 32 and Liz and I happened to be

Simon Shuttlewood *quality upholstery*

Expert Re-Upholstery
- Free estimates & advice
Repairs

- New cushions, springs etc
New suites, sofas & chairs,
- All made in our own workshops



*Please phone or visit our shop & showroom
with easy parking*

**7 Edward Street, Anstey, Leicester LE7 7DP
Telephone 0116 2340350**

outside the lift as Allan came back to the ward on Tuesday evening. He was well away on Planet Morpheus and deeply concerned whether the nurses had saved his pasta supper for him as he was starving! He directed the traffic back to his room, had me tidying up and putting everything back in place; he had a couple of cups of tea, ate his supper, chatted to Liz and me and we left him not surprisingly beginning to tire a little. As expected, he had very little pain post operatively with local anaesthetic all around his wound and an intravenous morphine pump that he can top up himself.

Yesterday, not unexpectedly, he was a little uncomfortable but doing well and as you can see from the photo he asked me to post, tremendously upbeat with no regrets.

If you wish to read more about how the family have coped with the dramatic change to their family life here is the link to the blog: - <http://wishingallanwell.com/>

I have been passing on the village's good wishes via the blog and hope to see him when he returns to the village in about four weeks time

Pam McMorran

Broughtons
Traditional Lighting & Ironmongery



The Old Cinema Cropston Road
Anstey, Leicestershire LE7 7BP
Tel. 0116 236 5300
www.broughtons.com sales@broughtons.com
Open 7 Days Mon-Sat 9am - 5pm Sundays 10am - 4pm

Visit the Showroom or website to see the wide range of quality products.

- Internal Lighting
- External Lighting
- Door Furniture
- Window Fittings
- Cabinet ware
- Switches & Sockets
- Home Accessories

Showrooms and Coffee Lounge Open 7 days
Mon-Sat 9am-5pm
& Sundays 10am-4pm

COVERING *Martin Page*
YOUR LOCAL *Tree Surgeon*

The Newtown Linford Area

charnwood

Have you considered your trees may need some maintenance from time to time. Are your trees maybe too tall blocking light, unsafe or untidy? Or maybe you need to remove that stubborn stump. Do your hedges, Conifers or shrubs need trimming. With 30 years of experience working with trees in your area, I would be pleased to offer you free advise and a free quotation.

I also sell high quality firewood logs

call me now on
01530 251312

Fully insured
 Local family business
 Clean & tidy service

Constantly Recommended

PEST CONTROL
 DOMESTIC • COMMERCIAL • INDUSTRIAL

BPCA

Guaranteed Service
 No Add On Charges

Wasps * Fleas * Ants Rodents
 Bird Control * Fly Killers * Fly Screens *
 Pet Screens * Feminine Hygiene

FOR A FAST, RELIABLE RESPONSE
CALL FREE ON
0116 234 0078

target
 making a pest-free environment

www.targetpestcontrol.co.uk | info@targetpestcontrol.co.uk

The Friends of Charnwood Forest

From Ice Age to war games
Recent archaeological survey and excavation in
Bradgate Park



Talk by Matt Beamish

Monday 14th March at 7.30 p.m.

Woodhouse Eaves Village Hall

Matt Beamish is a Project Officer for University of Leicester Archaeological Services.

Members are free. Guests are welcome, £3 at the door. Refreshments included. **The talk will be preceded by a short Annual General Meeting.**

Further information: Peter Bertram 01162 100 572 or www.focf.org.uk

Village Parking

I read with interest the item “**From the Records Village Parking**” in the last issue, 311, especially “the plans for double (narrow) lines right through the village.” The double yellow lines on Bradgate Road stop just past the 40mph sign. The situation beyond this continues to deteriorate year on year. Parking used to be heavy on Boxing Day and August Bank Holiday and now is so on most weekends. This essentially restricts this section of Bradgate Road to a single lane which in itself is problematic for passing traffic and for any resident trying to leave their drive. In addition to this, an increasing number of cars park partly on the park-side pavement making it difficult if not impossible for pushchairs, wheelchairs or mobility scooters to get past. A recent development is cars being driven along the pavement on the residential side of the road in order to pass oncoming traffic from the village centre or park exit. This is self-evidently hazardous. If restricted parking outside the former post office and on Groby Lane along with double yellow lines outside the Sunday School Rooms has helped alleviate parking-related problems in the Village Centre, it may be that these have been displaced elsewhere to another part of the Village. All this begs the question, is Bradgate Park reaching saturation point? If so, one response to this might be to have signs at key points which say “Park Full.”

Rob Haylock

Village Hall News

At the recent AGM of the Village Hall we said goodbye to three stalwarts of the Village Hall Committee: the Flower Club has disbanded so Janet Neaverson has stood down; Beverly Griffiths has moved to Woodhouse Eaves and Carol Ann Sugden has retired after 24 years of service. The remaining Committee Members were all re-elected/re-appointed. We thank these retiring members for their invaluable contribution they have made over the past years.

Unfortunately we did not have anybody to replace Bev and Carol Ann, so we have two vacancies on the Committee; if anyone is prepared to let their arm be twisted please contact me on 245298.

The Village Hall remains well-used during the daytime, mostly by the School and the Playgroup, but there are some evenings when it is available for hire – in particular the Hall is normally free on Friday evenings. So if anyone is interested in resuscitating the Badminton Club, or in starting a Film Club using our newly installed screen, please contact Pat on 242251.

We also thank Martyn for continuing act as caretaker with his continuing efficiency and good humour.

Toby Manning

Damaged Verges

One of the delightful features of our village are the grass verges that border the road at the upper end of Main Street and other places in the village. We all try to keep these verges in good condition. They are well maintained and mown regularly.

We received many favourable comments about them when we had our last NGS Open Gardens in 2014. This year we will again be opening 8 gardens on 30th May. It is therefore important to have the grass verges looking good, it is first impressions that count. So it is with a great sense of sadness that I have to report on the damage caused by vehicles turning and parking on the grass as you can see below. They are looking dreadful.



Please help us by recording any vehicle, name of Company and registration number. I recently complained to Yodel for damage outside our house and they immediately sent a payment for repair.

This damage has nothing to do with the building activity further up the road, as the verges will be reinstated once this has finished.

36 More about our NGS Open Gardens in the next issue." **Dick Howard**

Newtown Linford Parish Council

The Parish is receiving more and more complaints from residents, particularly from Bradgate Road, about inconsiderate and dangerous parking by visitors to Bradgate Park. We are passing the residents' enquiries and our

concerns to the Customers Services Department of Leicestershire County Council. We can also rely on our County Councillor, Mr. David Snartt's, support, who is helpful whenever he can be. For your own safety we would suggest you do not approach drivers who have parked in a dangerous location, particularly if children might be endangered.

Our next Parish Council meeting is on Monday 21st March 2016. If you feel you would like to include a subject in the meeting, we would like to see you at the Meeting, or if you cannot make the meeting, please let me have your concern and I will pass it on to the Parish Councillors.

The following one is on Monday 18th April. All meetings are at 7 p.m. in the small room of the Village Hall.

Everyone welcome.

Lydia Knott
Clerk to the Council

t: 01530 242522; e: lydia.knott@hotmail.co.uk

www.newtownlinford.org.uk/

Editors Note We also had concerns with parking on Grey Crescent, with visitors parking partly across driveways and making access difficult.

David Snartt was able to help us organise a meeting with the County Council and a few residents of Grey Crescent. The Council will be contacting residents on Grey Crescent and are considering white lines across driveways.



IDC Home Maintenance

Painter Decorator and Property Maintenance

NO JOB TOO SMALL

**From changing a light bulb to complete house re-decoration.
For all the jobs you need to do but simply don't have time.**

For a free quotation please call Ian on:

01530 245461 or 07885 541428

3 The Nook, Markfield, Leicestershire

Web site: www.idchomemaintenance.co.uk

Full Tradesman Liability Insurance held

Foot Problems ?

Corns, Calluses, Veruccae, Hard Skin, Nail Problems, Athlete's foot, Sore and Cracked Heels.

**Have them treated
Professionally in the comfort of
your own home**

Ring **Alistair Watt** MCFHP.MAFHP.
Foot Health Specialist



**Tel 01530 243009
or 07802 777221**

**Evenings and weekends
available**

Service with a smile -



Booking of Village

Facilities

To book the Village Hall (call
Pat Wood on 242251.

**To book the Sunday School
Room**
£10 per hour, £15 for two
hours, £20 for 3 hours,

Call Casey Pearson on
249259

Contributions to Village Magazine

Can we have your contributions for the **April 2016** issue by **15th March 2016** please. **Send to the Editor, Carole Heubeck, 5 Grey Crescent, Newtown Linford (01530 244790).**

E-mail heubeck111@btinternet.com

Please could you send any emails to the above email addresses. If you do not receive an acknowledgement of your email - please contact Carole, the Editor direct on the above number to check we have received it.

The opinions expressed by the contributors are not necessarily those of the Editors and they reserve the right to amend, shorten or not print any article or advertisement submitted for publication. Whilst every effort has been made to ensure the accuracy of the information printed in this magazine, and advertisements are accepted in good faith, no liability can be accepted for loss, damage or claim of any kind incurred by the reader



LIZ TUCCY

**LIZ TUCCY WEALTH
MANAGEMENT**



A wealth of expertise on your doorstep

We provide an experienced wealth management service
and offer specialist advice in a wide range of areas including:

- Investment planning
- Retirement planning
- Inheritance Tax planning

Tel: 01163 190958

Mobile: 07810 798714 Email: liz.tuccy@sjpp.co.uk Website: www.liztuccy.co.uk

3 Summerfield Drive, Anstey, Leicestershire, LE7 7QA

Anstey & District Funeral Services

Independent Funeral Directors
and Monumental Masons
J.G. Wright



We can take care of every detail, advise and help you on each and every step of the way.

- *Traditional hearse & fleet*
- *Flowers arranged for you*
- *Horse drawn carriages, motorcycle hearse & alternatives available*
- *Memorial showroom*
- *Extensive car parking*
- *Private catering suite & private chapels of rest*
- *Funeral Plans available*
- *Independent, 24hr Service*



Funeral arrangements can be made in the comfort of your own home if preferred

24hr Service - 0116 234 0548
Talbot House, Leicester Road,
Anstey, Leicester, LE7 7AT
www.ansteyfunerals.com

Golden Charter
Funeral Home

