

Newtown Linford Magazine

ISSUE NUMBER **209**

CONTENTS

Church News	3, 20/22
Village Diary	4
Coffee & Cake	5 & 8
Village Christmas Messages	6
Tennis Christmas Mix In	6
Music Quiz	6
Choral Society Concert	7
Village WhatsApp	9
Newtown Linford Bio Diversity	10/11
Advent Windows	13/14
Christmas Tree Festival	14
Village Advent Fair	14
Brownies	16
Village Archives	18
Gardening Club	19
Singing for Fun	22
Village Good News	23
Village Hall 90's nights	24/25
Playing for England	26
Christmas Day alone?	29
Friends of Charnwood Forest	31
David Snartt News	32/33
Neighbourhood Watch	34
Parish Council	36



November 2023

Paint Wizard

Mobile Vehicle Body Repairs

All work completed at your home
at your convenience

Call for a No Obligation Quote

07850 456696

Or email:

paintwizardthomas@gmail.com

Thomas Leason



Panel Resprays
Scratch Removal
Stone Chip Repair
Colour Restoration
Alloy Wheel Refurbishing
Machine Polishing & Glaze
Colour Code Bumper Resprays
Colour Code Wing Mirror Resprays

Consult

WALTER MILES

(Electrical Engineers) LTD

Est. 1928

For All Your Electrical Requirements

**LIGHTING, HEATING, POWER, REPAIRS, RENEWALS
AND MAINTENANCE**

Member of the Electrical Contractors' Association and N.I.C.E.I.C

Office and Works Marshall House, West Street, Glenfield, LEICESTER, LE3 8DT
Telephone 0116 287 2400 Fax 0116 287 2552
E-Mail office@waltermiles.com

Horseshoe Cottage Farm

Luxury bed and breakfast accommodation



Award Winning B & B.

Winner of the Silver Medal for 2022
Visit England
Best B & B in England

Previous winners of Outstanding
Customer Service & Sustainable
Tourism in the East Midlands

Roecliffe Road, Hallgates, Cropston, Leicestershire LE7 7HQ

Tel: + 44(0) 116 2350038

Email: lindajee@horseshoecottagefarm.com Website www.horseshoecottagefarm.com

The Bradgate

Group Parish



This month we will again remember all those from our community who fought and died in the World Wars of the previous century, and subsequent conflicts. We will also recall those who survived but who were forever changed as a result of physical and mental injuries, and all those who never trod the battlefields but whose resultant grief shaped their lives. We will do so against a backdrop of two current international conflicts. Our own country is an active participant in neither, though in both we stand alongside our allies.

The war in Ukraine is drawing close to two years of active fighting, though of course the tensions and military manoeuvres go back far longer. But even that drawn-out struggle pales against the complexity of the history behind the flare-up in Israel - Palestine which has burst into such dreadful events over the past weekend, as I write.

I utterly condemn the actions of Hamas, the kidnappings, the murders of civilians. Many have found that condemnation hard to voice. Perhaps because of the history of this war-torn region, and past allegiances and events, perhaps, to be generous to those who hesitate, because we know all too well that vengeance can be as bloody or more so than the offence and all of us know that this conflict has the potential to be even more incendiary than that which has raged in Eastern Europe.

Both sets of hostilities, with innocent civilians needing defence from those willing to carry out what we would hope to be unthinkable violence and crimes, weigh heavily as we remember together this month. Much as we would love warfare to be a thing of the past, we know it is a reality in the present and a risk in the future. Human nature is slow to change and the hatreds, and greeds, and jealousies which stoke war spring up afresh in each generation.

In a short magazine article, I cannot fully explain, but I believe that the only hope we have is in prayer. That the only way hearts can be turned from this violence is by the work of God, seen in Jesus Christ who overcame violence and death with forgiveness and love. Only he can reconcile those who stand so opposed. So join me this year, at our Acts of Remembrance, in praying for peace in the world God so loves today.

VILLAGE DIARY

November

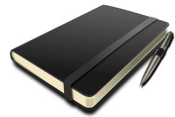
- 1st Parish Council Meeting
7th Newtown Linford Biodiversity Group Open Evening
10th/11th 90's Night Village Hall
12th Remembrance Sunday
19th Singing for Fun
25th Wildlife Walk
25th/26th Craft Fair Village Hall

December

- 5th Garden Club Christmas Party
7th Christmas Tree Festival and Village Advent Fair
23rd Tennis Mix In

January

- 27th Choral Society



Regular events

Mondays

- 9.30 Slimming & Fitness, The Linford
1.30 Dance Fitness for 50+ Linford
5.30 Brownies at "The Linford"
6:30 Yoga at Village Hall
8pm Balboa Dance at Village Hall
8pm Bell Ringing at the Church

Tuesdays

- 4pm Tai Chi at the Village Hall

4th Tuesday of the month

- Gardening Club

4th Wednesday of the month

- Gentleman's Club Bradgate PH

Wednesdays

- 10am Art Club in Church
6.30 Bodyblast Classes Village Hall
Quiz nights at The Linford 8pm start

Thursdays

- 11.15 Coffee Mornings Village Hall
6.15 HIIT/Legs, Bums & Tums/Kettle Bells, The Linford

Fridays

- 9:30 Jolly Tots, The Church
AM: Fruit and Veg stall at Cooks Farm Shop

Saturday

- 2nd Saturday of each month - Village Ramblers

COFFEE & CAKE ROTA November to December 2023

November

2nd Joe & Claire Costello with Bakers help 249613

9th Margaret Bloor, Sue Clarke, Sue Birkett 07713 457414; 242000; 244317; 07718 701614

23rd Bev Griffiths, Sue Dobby, Jennette, Lalita 01509 890264; 245366; 07930 955990; 07718 701614

30th Judy Rowe, Felicity Manning, Marilyn Upstone 243989; 245298; 242715

December

7th Glennis M, Mary Clarke, John Castle, Carolyn T 242897; 01163 190211; 249173

14th Janet & David Brunton, Angela & Adrian McNamee 242662, 07710 253231

21st Lesley Cook/Chris A/Ann Scrine 245208; 242432; 481928 - Turkey Sandwiches CA to provide

28th - Happy Christmas - No meeting today

Please swap with someone else if you are unable to do your duty. Pass on the hall key to the next people on duty.

An opportunity for everyone to catch up on Village news and activities and to meet your fellow neighbours

Rota Volunteers - If you are struggling with putting the tables and chairs out for your duty Joe Costello 249613 has offered to help if around and will ask someone else to help him as well..

Coffee Morning

Everyone Welcome



On the Lawn

Thank you to all the villagers who kindly offered their lawns for our outdoor visits over the summer. We were very lucky with the weather and it was lovely to enjoy the summer weather. See page 8 for photos of one of the events.

Carol Ann

Thank you to everyone who kindly volunteered to deliver to 26 addresses on Main Street and the Bradgate. We now have a volunteer for going forward.

Once again thank you to all the volunteers who deliver our magazines in all sorts of weather - it is much appreciated.

Christmas Card messages for Charity 2023

**MERRY
CHRISTMAS**

Our 5th year raising funds for a charity instead of sending local cards is here again. If you are interested in sending your fellow parishioners a message in the December Magazine avoiding the rise in postage stamps and cards, please drop your message written on an envelope into 32 Main Street before **14th November 2023 with a £20 donation for the charity.** The money goes to a local Loughborough Charity that helps to re home people by providing accommodation and an address enabling further help. All funds go directly to the running of these houses.

Tennis Club Christmas Mix In

Please join us for a Tennis Christmas Mix in followed by a festive drink or two and pizza at the

**Bradgate Pub on
Saturday 23rd December
Tennis 12-2pm
2pm onwards at the pub.**



Date for your Diary



End of Season Music Quiz - Friday 2nd February

Tables of 8 - £15 per person

Ploughman's Supper

Licensed Bar

To book a Table please contact Carolyn on 249173 or Carol Ann on 243433

Can anyone help Nigel Blythe?

Nigel one of our local residents has acquired a Camera and wondered if anyone had some time to help him understand how it all works? he remembers the days of removing a film from a camera and sending it off to be developed! If you can help please contact him on 242512.



NEWTOWN LINFORD CHORAL SOCIETY
25th Anniversary Concert

Winter

Requiem: John Rutter

and others including

Rutter: Blow, Blow
Chilcott: Midwinter
Elgar: The Snow

Handel: Hallelujah Chorus
Gjeilo: Ecce Novum
Elder: Lullaby

Soprano Soloist: Ella McNamee
Orchestral Accompaniment
Musical Director: Sue Ford

7.30pm, Saturday, 27 January 2024

Emmanuel Church, Forest Rd, Loughborough

Tickets:£14

(£7 Children under 18 & Students)

Peter Sayer 01530 243822

Registered Charity No. 1079843



On the Lawn

Thank you to all the villagers who kindly offered their lawns for our outdoor visits over the summer. We were very lucky with the weather and it was lovely to enjoy the summer weather.



Editors letter

I had to look through back issues for 2012 and 13 and came across a few gems and wise words from Lydia Knott our Clerk to the Council .

Flooding - Lydia wanted to remind residents that she had a number of



sandbags should they need any because of the flooding and to contact her in the November and December issues. Nothing changes does it.

Hannah now keeps them at the Village Hall if any are needed.

In the September and October 2012 issues Lydia welcomed a **new Parish Councillor Sue Pritchard**, with the words "with her educational and professional background she will be a great asset to the Parish Council".



There was flooding at the Church in October, and Marilyn Upstone has sent some photos of what they faced with cleaning up!



On another note, some of us in the village use a **WhatsApp Group** which was set up in the



pan-
demic,
original-
ly for a

small group of us to pick up prescriptions etc. It has however grown and is a useful tool for villagers, Sample subjects included picking up gel bags for flooding, people coming round door to door "selling", roads being shut, help needed. Recently Fran from Markfield Lane appealed for toys for the charity "Toys on the Table". Villagers responded so well she took a van load! To join the group contact Hannah who is the administrator of the group.



Newtown Linford Biodiversity Group

Open Evening Tuesday 7th November 7.30pm Village Hall

Dr Jack Matthews, Geoheritage Conservation Officer at the National Forest Company, will be giving an illustrated presentation on the Charnwood Forest Geopark at this event. The evening includes light refreshments, and a stall selling hand-made greetings cards. The Bradgate Park calendar will also be available to purchase.

All welcome. Admission free.

Wildlife Walk Saturday 25th November 10.30am

Our next walk is a Wildlife Walk with a difference: we go to Bradgate Park to look at the geology of the area. Please meet at Newtown Linford Gate at 10.30am. It will be helpful if you inform Toby Manning that you plan to attend (01530 245298; ptm@tobymanning.co.uk).

Adder on the cricket field

The photograph shows an adder which was spotted near the cricket pavilion: Dick Howard just managed to take this photograph before it slithered away. It appeared to be looking for a nice dry place where it could hibernate for the winter.

Helping wildlife in winter

As well as putting out food for the birds, here's a reminder of other ways to help wildlife in our gardens over the winter:





Cooks Farm Shop & Country Supplies



For all your Animal, Pet & Bird Feed



Did you know that we sell:

Equestrian Supplies - Pet Food & Supplies
Timber, Fencing & Gates - Electric Fencing
Bird Food including Mixes & Straights
Pigeon Food & Supplies - Fish Food
Point of Lay Hens & Poultry Food - Coal & Logs



Visit our Website: www.cooksfarmshop.co.uk

Markfield Lane, Newtown Linford LE6 0AB

Opening Times: Monday - CLOSED

Tuesday to Saturday 9am - 5pm Sunday 10am to 1pm



- ◆ **Leave some dead leaves**, perhaps under shrubs or hedges, for overwintering small mammals, amphibians and insects.
- ◆ **An insect or bug hotel** in a sheltered but sunny position gives ladybirds, lacewings and other creatures a place to live.
- ◆ **Leave some herbaceous and hollow-stemmed plants unpruned** until early spring to provide homes for insects over the winter. Bamboo canes are ideal too.
- ◆ **Grow trees and shrubs which produce berries or other fruit** (e.g. holly, ivy, apple, cotoneaster, pyracantha) which help feed birds. The seed heads of some plants (e.g. teasel) can also be left over the winter for birds to feed on.
- ◆ **Piles of stones or logs** make excellent habitats for a variety of overwintering creatures.
- ◆ **Provide a shallow container of water at ground level** for other garden wildlife which needs to drink, as well as birds.
- ◆ **Compost heaps** can be the winter resort for frogs, toads and other creatures, so take care when turning.
- ◆ **Check bonfires** for sheltering and hibernating animals before lighting.

Email: nlbiodiversity@gmail.com

KEITH SMITH (ANSTEY) LTD



6 STADON ROAD ANSTEY LE7 7AY - TEL: 0116 2362395 - sales@keithsmithltd.co.uk

FAST FREE LOCAL DELIVERY



HOOVER H3W58TE

- Washing Machine
- ✓ 1500rpm Spin Speed
 - ✓ 8kg Load Capacity
 - ✓ D Rated
 - ✓ 1yr Guarantee
 - ✓ 16 Programmes



Now Only **£289.99**



BOSCH WAJ28001GB

- Washing Machine
- ✓ 1400rpm Spin Speed
 - ✓ 7kg Load Capacity
 - ✓ B Rated
 - ✓ Express Wash
 - ✓ 15 Programmes



Now Only **£419.00**



Blomberg LWF174310W

- Washing Machine
- ✓ 1400rpm Spin Speed
 - ✓ 7Kg Load Capacity
 - ✓ 28 Min Fast Full Load
 - ✓ 16 Programmes
 - ✓ D Rated



Now Only **£379.99**



HOTPOINT NSWE745CWSUK

- Washing Machine
- ✓ 1400rpm Spin Speed
 - ✓ 7kg Load Capacity
 - ✓ B Rated
 - ✓ Fast Full Load
 - ✓ White



Now Only **£329.99**



BEKO CIFY81X

- Built-In Single Oven
- ✓ 5 Functions
 - ✓ 66 Ltr Oven
 - ✓ Fan Assisted
 - ✓ Stainless Steel
 - ✓ A Rated



Now Only **£259.99**



SAMSUNG WW90TA046TE

- Washing Machine
- ✓ 1400rpm Spin Speed
 - ✓ 9kg Load Capacity
 - ✓ A Rated
 - ✓ 5yr Guarantee
 - ✓ White



Now Only **£449.99**

Fitted Kitchens

We are pleased to announce that we are now agents for A.W.E Kitchens and Bedrooms Who specialise in

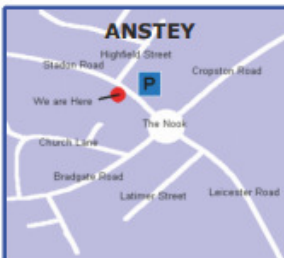
Bespoke made to measure kitchen & bedroom furniture

Please call in for further details

FREE DELIVERY

with
Personal Service

“Ask About our Same Day/Next Day Installation and Removal Service”



Newtown Linford Advent Windows

Resident, Ruth Brutnall, has again very kindly offered to co-ordinate the return of the Village Advent Windows initiative. As in previous years, Ruth is looking for volunteer residents to create an advent window each day throughout December.

Ruth says:

“The idea is that 24 houses each create an advent window, a scene in a window which can be seen from the street. House number 1 displays and lights up their window on 1st December. On 2nd December, house number 1 and house number 2 light up their windows and so on, so by Christmas Eve there would be 24 windows around the Village which people could walk round at their own leisure and discover.

The design can be simple, or as elaborate as you choose. There's plenty of inspiration on Pinterest! If you don't have a suitable window, or a window which can be seen from the road, you could perhaps create a window frame in your front garden?



1 Bracken Hill, Christmas 2022

If you:

- ❖ Live in a house that has a window that can clearly be seen from the street without people coming on to your property (or could create a 'window' in your garden.
- ❖ Are happy to keep the window illuminated each evening after it is 'opened' until after Christmas and
- ❖ Are interested in participating....

Please let Ruth Brutnall know by email to rbrutnall@gmail.com, so that we can see if there is sufficient interest again to make this workable for Advent 2023. Please include:

- your name and address;
- your email address; and
- any preference you have about dates

Please be aware that in agreeing to participate you are also agreeing to have your address identified on the list and map (which would be shared via the Newtown Linford Parish Council & NHW Facebook page), so people can look for your window."

If anyone is interested in assisting Ruth coordinate the 2023 Advent Windows, please get in touch via the email address above. This years' Advent Windows will be celebrated at the



THE BRADGATE

NEWTOWN LINFORD



THE BRADGATE—COUNTRY DINING AND DRINKS

Christmas is just around the corner

Why not book our private dining area, The Loft
For your special Celebration (14-32 Guests)
Christmas Bookings being taken.

Family Pizza Deal

2 Adult & 2 Kids

Pizzas & 2 Sides

for £35

Available Tuesday—Friday
3pm-6pm

Two Pizzas for
£20
Available Mon
12 noon—3pm
and Tuesday—Fri
12noon to 6pm



ALL PIZZAS ARE AVAILABLE FOR TAKEAWAY DURING SERVICE HOURS

Tel: 01530 242239

www.thebradgate.com | contact@thebradgate.com

Brownies

On Sunday 24th September we attended the Church Service at All Saints Church to celebrate Harvest. We did a parade into the Church, read prayers and sung songs. It was a lovely service to be thankful and a time to think of those less fortunate than us.

This week at Brownies we were shipwrecked! We had to swim to an island to make a tent and pillows in our sixes before dark. We could use 4 chairs and newspaper to make our tent. We decorated them and all made a pillow too. Once we had made the tents, we all got inside it to see if we got wet when the young leaders poured water on it ☐ We did not get wet in the tents ☐

Afterwards we played port and starboard whilst the newer brownies planted daffodil bulbs for next spring which will go towards us earning our gardening badge.

Thank you Brown Owl, Snowy Owl and the young leaders for making Brownies fun.

Willow Appleton age 7



Newspaper tents

Vicky and the team
welcome all customers
to YOUR local



66 Main Street, Newtown Linford
Tel: 01530 244012
thelinford.co.uk

- ❖ Quiz Night every Wednesday, 8pm start.
- ❖ Regular entertainment – details on Facebook, Instagram, and Notice Board in the lounge.
- ❖ Room Hire available, ask at the bar for details.
- ❖ Free Wi-Fi.



**BAR SNACKS
AVAILABLE**

Reduced prices on all beers, wines &
spirits for Members. Membership
Forms are available at the bar.

Opening Times: Monday - Friday 4pm – 11pm.
Saturday 11am–11pm. Sunday 12noon – 8pm.
Friday Happy Hour 4pm–5pm



01530 244012
newtownlinfordclub@gmail.com



BROUGHTONS
— LIGHTING & IRONMONGERY —



Showroom Open
Monday - Saturday 10am - 4pm

The Old Cinema Cropston Road Anstey Leicestershire LE7 7BP

0116 232 3175

www.broughtons.com sales@broughtons.com

Village Archive

Historically Lady Jane Grey is linked to the village and yet rarely mentioned is the fact that another future Queen of England lived at Groby Manor. The Greys were then owners of the area known as Bradgate i.e. what we know now as the Park. This month we have an extract from Potter's History of Charnwood Forest "A Day in the Life" of Dame Elizabeth Grey formerly Woodville. She later was to become the Queen of Edward IV, mother to the two Princes in the Tower and grandmother of the future Henry VIII .

“May 10, 1451. Thursday morning: Rose at 4 o'clock, and helped Katherine to milk the cows, Rachel, the other dairy maid, having scalded one of her hands in a very sad manner last night. Made a poultice for Rachel and gave Robin a penny to get her something comfortable from the apothecary (*pharmacist*).

6 am: Breakfast. The buttock of beef, rather too much boiled and the ale, a little the stalest. Memorandum to tell the cook about the first fault, and to mend the second myself, by tapping a fresh barrel directly.

7am: Went out with the Lady Duchess, my mother, into the courtyard; fed 5 and 30 men and women; chid Roger very severely expressing dissatisfaction in attending us with the broken meat.

8am: Went into the paddock behind the house with my maiden, Dorothy; caught Stump, the little black pony myself, and rode a matter of 6 miles, without either saddle or bridle.

10am: Went to dinner, John Grey, one of our visitors (*her future husband*) a most comely youth. John ate very little, stole a great many tender looks at me, said a woman could never be handsome in his opinion, who is not good tempered. I hope my temper is not intolerable; nobody finds fault with it, but Roger, and Roger is the most disorderly serving man in our family. John Grey likes my white teeth- my teeth are of a pretty good colour, I think, and my hair is as black as jet, though I say it – and John, if I mistake not is of the same opinion.

11am: Rose from table, the company all desire us of walking in the fields. John Grey would lift me over every stile, and twice he squeezed my hand with great vehemence. I cannot say I have any aversion to John Grey; he plays prison bars (*a form of hide and seek*) as well as any



gentleman in the country, is remarkably dutiful to his parents, and never miss his church of a Sunday.

3pm: Poor farmer Robinson's house burnt down by an accidental fire. John Grey proposed a subscription among the company, and gave a matter of no less than £5 (£4,713 today) himself to this benevolent intention.

4pm: Went to prayers.

6pm: Fed the poultry and hogs.

7pm: Supper at the table, delayed on account of farmer Robinson's fire and misfortune. The goose pie, too much baked and the loin of pork almost roasted to rags.

9pm: The company almost all asleep, these late hours are very disagreeable. Said my prayers a second time and fell asleep about

10pm: Dreaming that John had come to demand me of my father." Elizabeth married John Grey but following his death in 1461 she subsequently married Edward (1464) and became Queen.

Iris Sayer

Newtown Linford Gardening Club **(www.newtownlinford.org.uk/gardening-club.html)**

We had an interesting talk from Bridget Blair in September. Bridget was a journalist working for Leicester radio and presented many programmes on gardening during her time there. She was a member of the Media Gardeners Guild and therefore attended all the prestigious events as a journalist and mixed with the big stars not only of gardening but also in the world of entertainment at events such as the Chelsea Flower Show. Her stories of these times we found fascinating and it was refreshing to hear about gardening from a totally new angle.

We complete our year with our annual Christmas Party with our traditional jacket potato meal, glasses of wine and mince pies for afters. We again hold our giant raffle with around 80 prizes to be won.

Our programme for 2024 is already complete and we can look forward to visits from two Gardeners' World presenters Nick Bailey and Adam Frost and a trip to the Dorothy Clive Garden.

Further details of our club can be found on our website, shown above, or by email at 32couling@gmail.com or by telephone on 01530 242452



Anne and David Couling

SUNDAY SERVICES November 2023



DATE	GLENFIELD	NEWTOWN
5 th November All Saints'	8.30am Holy Communion	10am Holy Communion <i>Richard Trethewey</i>
	9.30am Breakfast Church	4.30pm Remembering with Thanksgiving <i>Richard Trethewey</i>
12 th November Remembrance	10.15am Remembrance	10.50am Remembrance <i>John Woolmer</i>
	4.30pm Holy Communion	
19 th November Second Sunday before Advent	10am Morning Worship	10am Holy Communion <i>Richard Trethewey</i>
26 th November Christ the King	10am Holy Communion	10am Morning Prayer <i>Richard Trethewey</i>
	4pm Crumpet Church	

Advance dates for the Autumn.

On Sunday 5th November, we will be marking All Saints' with our annual service of 'Remembering with Thanksgiving' for all those who have died in the past year.

Remembrance is 12th November.

Advent begins on 3rd December.

The Christingle Service will be on Sunday 10th December at 10am.

As last year, there will be a Christmas Tree Festival in Church during December.

CHURCH REGISTERS



Weddings

None

Baptisms

None

Funerals

None



Midweek Holy Communion

Newtown Linford These services have been cancelled for the time being

Glenfield 10.30am, Wednesdays 1st, 8th, 15th, 22nd & 29th November

Online Services

<https://www.facebook.com/allsaintsnewtownlinford/live>

<https://www.facebook.com/stpetersglenfield/live>

Church Contact Details

Revd Richard Trethewey
(Rector) 0116 287 1604
richard@allsaintsnewtownlinford.org.uk

Hayley Moore (Church Administrator)
0116 239 3768

office@bradgatechurches.org.uk
www.allsaintsnewtownlinford.org.uk

Church Warden: Michele Petty, m.petty@ulverscroft.co.uk,

Regular Events - Bell ringer's practice: Monday 8pm

Website: www.allsaintsnewtownlinford.org.uk



All Saints and Remembering with Thanksgiving: We will mark All Saints' on Sunday 5th November, when at 4.30pm we will also be holding our annual service of 'Remembering with Thanksgiving' all those who have died in the past year. All those linked with a funeral which has taken place at All Saints' this year have been invited, but you are welcome to come to remember someone else you have lost recently or longer ago.

Advance dates:

Remembrance is on 12th November, and **Advent begins on 3rd December**; we have a **Christingle Service on Sunday 10th December** at 10am. As last year, there will be a **Christmas Tree Festival in church**, launching with the **Village Fayre on 7th December**.



Building work: Our last five-yearly inspection of the building identified a few areas where some of the stonework needed repair. We have agreed a tender from a building firm and expect the work, which will take several weeks, to begin before the end of the year. The work is external so will not affect our Services or Groups.

Christmas Cards: We are hoping to produce Christmas cards of All Saints' for sale again this year. At the back of Church is a proof sheet of several designs. Please indicate on this if you would particularly like a number of a specific design.

Singing for fun – Sunday 19th November

As reported last month, Sue Ford, who directs the Choral Society, will be leading a fun singing session in the Village Hall on Sunday afternoon 19th November, from 2pm to 5pm.

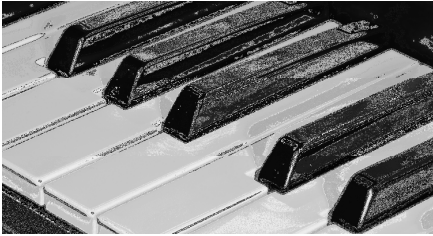


This will be a relaxed informal session, and there's no need to worry about being singled out for singing a wrong note! All that is necessary is that you enjoy singing, or think that you would like to give it a try - if so then please come and join us. Some members of the Choral Society will be coming along to add a bit of vocal support, and we will also have an expert keyboard accompanist to help.

There will be a charge of £10 for the afternoon - free coffee and cake will be provided as an added incentive! To sign up please email Sue at sueford30@hotmail.com.

Peter Sayer

2 PIANOS, 8 HANDS!!
Friday 10th November 2023 7PM
Markfield Methodist Church



Beate Toyka wowed us with a wonderful performance (piano) in the company of John Parsons (Cello) during March 2023, and it is with great pleasure that we welcome her return in the company of 3 more amazing pianists.

The “Derby Piano Quartet” features the unusual combination of four pianists on two pianos! It was formed 20 years ago by Anglo-German pianist and musical innovator Beate Toyka whose 2 grand pianos in her home studio provide the group’s rehearsal space. The other ensemble members are chamber musician extraordinaire Gillian Bithel, organist-pianist and academic Dr. Richard Hodges and Dana deWaal, choir director, opera singer and composer.

Their colourful programme will bring you well known gems such as the Overture from ‘Ruslan and Ludmilla’ and Grieg’s ‘Peer Gynt Suite’ as well as items by Beethoven, Smetana, Joplin, Herbert and others. Their second half will present a journey from 1 to 8 hands, ranging from a left hand only piece via unusual combinations such as Ravel’s ‘Frontispiece’ for 5 hands and audience participation for 7 hands before returning to all hands-on deck!

This promises to be a wonderfully entertaining evening of amazing music from fantastic musicians, and we look forward to welcoming them all.

Tickets £12 Adults, £6 U16, including programme and refreshments.

Please book online via our website
www.markfieldmethodistchurch.org if possible,
or call 07979 607099

Village Good News

“Many Congratulations Naomi on your engagement to Tom, during your holiday in Bali. A secret well kept. We’re all looking forward to seeing you at the upcoming party in London. It’s been an amazing family year.
Love mum, dad, Alicia, Aaron and Nathan xxx



Lovefool 90s Night(s)



Thank you for the amazing response we have received to the Lovefool 90s nights on Friday 10th and Saturday 11th November. The event(s) will take place at Newtown Linford Village Hall starting at 7.30pm and finishing at midnight on both evenings. Please bring cash along with you.



There will be three bars serving a range of drinks including 90s alcopops and The Bradgate will be serving food from the Village Hall kitchen, to include pizza slices, hotdogs and chips. More details to follow.

Tickets for the Friday have now sold out and there is a reserve list in place should any become available. At the time of print, we still have availability for the Saturday night. Tickets are £15 each and profits are in aid of Newtown Linford Village Hall.

Call Tara or Hannah to book your tickets now!
Thank you for your support!



Jolly Tots Playgroup

Friday Mornings

All Saints Church, Newtown Linford

9:30am - 11am

We are a friendly group of parents, grandparents, carers of babies and children up to reception age (4years).

We have lots of fun with toys, crafts, stories and Singalong.

**There will be hot drinks for Adults
and Cold drinks and snacks for Children.**

All Welcome.

**For more information or if you would like to help in any way -
please contact**

**Ann 07925 919 618 or
Carolyn 07896 960 676**



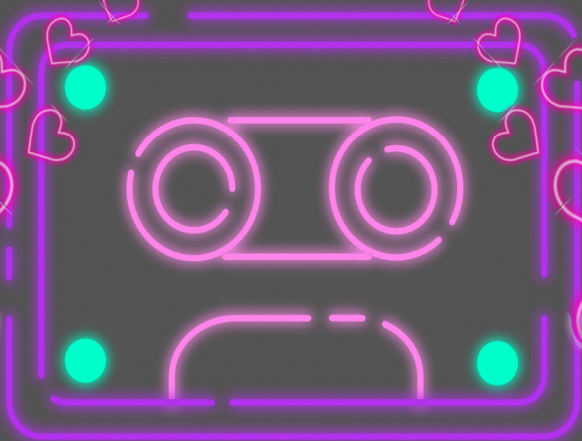


LOVEFOOL



90S
DRESS
CODE

90S
DRESS
CODE



90'S NIGHT(S)

NEWTOWN LINFORD VILLAGE HALL

FRI 10TH & SAT 11TH NOV '23 7:30PM - 12AM



TICKETS £15 EACH



TO BOOK, CALL/TEXT

TARA 07783 564912 OR HANNAH 07900 695395

**PLEASE NOTE, TICKETS ARE
NON-REFUNDABLE**

Revised article from last month **BOWLING FOR ENGLAND**

About 15 years ago after a lifetime of competitive sport Des Bates turned his sporting skills to Bowls. In his youth he was an accomplished footballer playing for Shrewsbury Town, as well as longer spells with Anstey Nomads and Enderby. Des played competitively until he was 50.

In the summer months his passion was playing cricket for Newtown Linford where he still has many records to his name. Remarkably for this sporting family both his sons Iain and Paul were also Club Captains, and now grandsons Sam and Harry are playing well. Des is still remembered for his bowling prowess but it is not bowling at cricket that we should congratulate him but BOWLS.

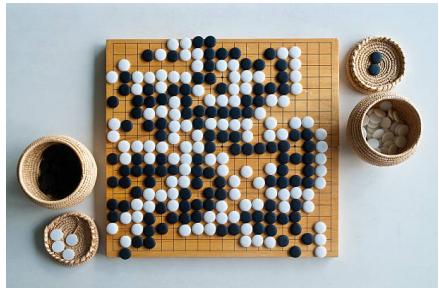
Des became a member at New Lount Bowls Club in his 60's, probably the best club in Leicestershire. Such has been his skill and competitive edge that at the age of 83 he was selected to represent England. As if that was not honour enough Des also received an award for the rink that had the highest score. Congratulations from us all, we are so so pleased for you. Gill would have been very proud of you.

Des said " I am probably the only person from Newtown Linford to play for England at Bowls and certainly the oldest". I think Des is probably the first person to play for England at any sport.

Dick

We have a report of another villager who has represented England competitively.

In October 2012 Toby Manning represented the UK at Go (the oriental Board Game) in the Korean Prime Minister's cup, played in Gwangju, Korea.



Booking of Village Hall

To book the Village Hall

Contact Hannah Shaw, Parish Council Clerk

Our Services

Fully Managed – 8% plus VAT

Let only - £525.00 plus VAT

Tenancy set up fee - £250.00 plus VAT
(only payable on New or Change of tenancies)

Members of the Royal Institute
of Chartered Surveyors

Up to date integrated property management
software

NO EXTRA CHARGES FOR

- Tenancy referencing
- Inventory of property
- Floor plan for advertisement

We have 65 years experience in property management.



Roy Green Lettings & Estate Agents



roygreenlettings



Roy Green Lettings



How to contact the Police

All incidents are to be reported to
the Police and **by calling
101**

They will then assess the situation and deal with the situation as they see fit. This may involve a vehicle from another area. If you wish, also advise our NHW coordinator who will circulate if appropriate.

**An alternative way is to go
online to report an incident**
<https://www.police.uk/pu/contact-the-police/report-a-crime-incident/>

This may be easier if the phone call is not urgent. 101 calls are not free.

Stay Fit & Active

Dance Fitness for 50+

The Linford , Main Street
Mon 1:30 — 2:30pm

Are you aged 50+?



Come and join us and improve your
fitness level

All levels of fitness are catered for
with fun filled sessions to music.

Do you want to keep active as long as
you can?

Has your get up and go, got up and
gone?

Contact Mo Watson

Tel: 07751 504669

Email: mwdfa@btinternet.com

Derry's Nurseries



Est 1976. Well worth a visit....
Main Steet, Cossington LE7 4UU

Tel (01509) 812815 Open 7 days a week
Campervan Café open Friday, Saturday & Sunday

Serving Leicestershire and the East Midlands since 1976. We have a unique, customer focused approach and we invite you to visit us at our 11 acre site in Cossington. Whether it be compost or a shrub we stock a variety of plants for delivery or collection.

Come and see our wide variety of evergreen shrubs, hanging baskets & winter plants now in stock. We have a superb selection of Pots. Decorative stone & Sleeper Beds



**Full
size
trees
in
stock**

**New Loyalty Card
10% OFF
Everything
Except Fuel
Only £5 for life**

Wide range of Compost & Growing Media

Seasoned Hardwood Logs, Coal & Kindling. Supplied in nets, bulk bags or loose loads. Our Hardwood bulk bag offer— Delivery within 5—8 working days.



FREE DELIVERY TO LOCAL AREA
Derry's Nurseries NOW ONLINE
at www.derrysnurseries.com
Email: hello@derrysnurseries.com

DON'T BE ALONE CHRISTMAS DAY



Come and Join us at



**St Marys Church Rooms
Anstey**

For people who would otherwise be on their own, aged over 70 in Anstey and surrounding villages

Transport can be arranged



**To book your place please ring
07979 607099 Kerry Sharpe**

There is no charge for the day, we just want everyone to have the opportunity of being with others on what can be a lonely day.

Donations are welcome if guests prefer to give something.

If anyone would like to make a donation of chocolates/ biscuits/sweets please kindly drop at below where possible or give me a call.

ANSTEY: Roy Green or Judge Estate agents, The Nook

MARKFIELD: Bowns Hardware, or Markfield Community Centre

GLENFIELD: MB signs, Station Road (near The Balk)



VILLAGE HALL NEWS
November 2023

Toby Manning
Chairman,
Village Hall Committee

A year ago the Village Hall Committee were very concerned about the rising cost of energy (which now comprise over a third of our total costs). The Committee took a number of small steps: we ran more fund-raising events; we increased prices a little; and we improved control over the heating by installing a remote-controlled thermostat (a "Hive"). As a result our gas consumption was down by over 20%; better housekeeping by Users resulted in electricity consumption also being reduced.

I am pleased to announce that, as a consequence, we made a small surplus of around £1,000 in the year up to 30th September. However, expenditure on Hall maintenance was relatively small. The outside of the building is due for a major re-paint and this is likely to result in a small loss for next year, but this will be easily covered by our reserves.

Despite this, we remain concerned about the cost of fuel, both gas and electricity, and we are looking at further ways of reducing our expenditure without adversely affecting Users: this may include replacing more fluorescent tubes with led's.

Committee

Peter Rose has stepped down as Treasurer (but he remains on the Committee) and Jason Hall has taken over. We thank Peter for his 13 years of service as Treasurer.

Crocuses

Some 2,000 purple crocus bulbs have been planted by Bradgate Rotary outside the Village Hall, as part of Rotary International's global 'End Polio Now' campaign. There is also a small plaque of explanation.

The Future

Bookings for the winter season are good – we have a number of new regular users, which we hope you will support:

- Forest Fitness (Wed 18:30 – 19:30)
- Yoga (Monday 18:30 – 19:30)
- Tai Chi (Tue 16:00 – 17:00)
- Balboa Dance (Mon 20:00 – 21:30)

To book the Village Hall, please email clerk@newtownlinford.org.uk or call 01530 249945 during office hours.

SYKES JEWELLERS

WATCH, CLOCK &
JEWELLERY REPAIRS

WATCH BATTERIES AND
STRAPS FITTED WHILE
YOU WAIT

8 BRADGATE ROAD, ANSTEY
TEL: 0116 236 2510
sykesjewellers.co.uk



MARTIN ALLEN

**FLOORING &
FRENCH
POLISHING**

**YOUR LOCAL
FLOORING SPECIALIST.**

All timber floors laid

**All existing timber floors sanded
and refinished**

Any colour or finish

Free quotations - Call Martin.

0116 2165107

martin@martinallen.co.uk



THE FRIENDS OF **CHARNWOOD FOREST**



Planning issues in Charnwood Forest: the new Local Plan.

The November meeting is on Wednesday 22nd November in Woodhouse Eaves Village Hall at 7.30pm.

The title is 'Planning Issues in Charnwood Forest'. Charnwood Forest falls mainly within Charnwood Borough, whose Council's Local Plan is due for adoption this autumn. The FOCF Committee has already sent in some questions about planning issues in the Forest, but this is YOUR opportunity to raise any concerns you might have with a member of the Planning Committee.

Members free, visitors £3. A glass of wine is served afterwards.

Marilyn Upstone

Information From David Snartt. Borough Councillor Forest Bradgate Ward.

Planning Application, Markfield Lane.

Just to update you on the planning application on land south of Markfield Lane. There has been a recent amendment to the application, which is now for the demolition of 287 Markfield Lane and the development of up to 115 dwellings (previously 150).

I have again 'called in' this latest proposal. I believe there are still valid reasons for refusing this latest amended application.

Along with my previous representations, I have outlined four areas of concern: Sustainability, the distance future residents of these proposed dwelling would have to travel to access services and retail shops: The proposed pedestrian and cycle access onto Leicester Road also used by vehicles: The nearby permission for granite extraction and the impact this proposal will still have on the landscape character and tranquillity of the site adjacent to the ancient woodland. My submission to the consultation can be viewed on the Council's website under planning application P/22/1031/2. Residents, if they are minded, can still send their submissions to the consultation process at Charnwood Borough Council.

Flooding Advice and Information.

As we approach the season where the risk of flooding has increased, Charnwood Borough Council have put together a webpage on the Council's website to provide residents with some useful information, advice and links if you are affected by flooding. www.charnwood.gov.uk/flooding. This webpage provides information which includes, flooding from sewers, from roads, protecting your home from flooding and details about sand-bags, when in certain circumstances they will be issued by the Council.

Details are also included about the responsibilities of local Councils and national agencies.

Loughborough Fair.

I thought local residents would be interested to know that the well supported Loughborough Fair returns to the town in November. It will be the 802nd year that Loughborough Fair has taken place with thousands of visitors expected to attend the event in the town centre. The historic spectacle, operated by Charnwood Borough Council will take place from Wednesday 8th November, starting at 6pm until Saturday 11th November. The first official charter for Loughborough was granted to the Lord of the Manor, Hugh de Depenser in 1221 by King Henry III. Approximately 100 individual show people attend each year, presenting between them some 20 large rides, numerous children's rides, games and novelty stalls and

the usual popular refreshment stands. You can find out more details about Loughborough Fair, including opening and closing times each day by visiting Charnwood Borough Council's dedicated webpage.

Revenues and Benefits.

Charnwood Borough Council has agreed to bring its revenue and benefits service back in-house to help save around £1.5 million over 5 years. The service has been delivered by an external provider for over 10 years, but the Council's Cabinet has decided it should run and managed by the Council directly.

This decision follows a procurement exercise which concluded that the Council could maintain service standards and make savings when compared to the proposals from external providers. The service will be brought back in-house towards the end of 2024.

The revenue and benefit service deals with the collection and billing for council tax and business rates, housing benefits claims and managing council tax support and discretionary housing and council tax payments.

Consultation on Proposed Polling Stations.

Although there are no changes to polling stations within my Forest Bradgate Ward, including Newtown Linford Parish, I thought I would just alert you to a consultation that has been launched by Charnwood Borough Council about proposed changes to polling districts, places and stations. All 92 have been reviewed by officers at the Council and views are now being sought. More information is available on the Council's website charnwood.gov.uk/pages/polling_district_review.

The deadline to submit representations to the consultation is Friday 10th November 2023.

**Problems
With Your Feet?**

Home Visits & Cropston Surgery

- ∞ Ingrowing Toenails
- ∞ Fungal
- ∞ Corns
- ∞ Callous
- ∞ Verrucae

Johanna Partridge MCFHP MAFHP
Foot Health Practitioner
CALL 0116 235 1971
Or 0788 781 7370

**Registered Member of the British
Association of Foot Health Professionals**



Newtown Linford Neighbourhood Watch - A member of the Parish Council



PCSO Mitch Jarvis has reported the following crime statistics for September:

- 3 x Criminal Damage at Bradgate Park
- 1 x Theft
- 1 x Attempted theft of a motor vehicle.

PC Moore and PCSO Jarvis have since been patrolling the area of Old John at Bradgate Park due to antisocial behaviour which caused damage to the tower.

Now that the darker nights are upon us again, I wanted to remind you all of the Neighbourhood Watch WIDEN Campaign.

Want to protect your home? Think WIDE(N) (WINDOWS, INTERIOR, DOORS, EXTERIOR, (NEIGHBOURS) to have the best possible protection against burglary.

Research shows that a set combination of security actions provides up to 50 times more protection for your home versus no security. A combination of WIDE actions is the most effective and recommended by police throughout the country. Additionally, Neighbourhood Watch believe neighbours keeping an eye out for each other is also key to preventing burglary.

- **WINDOWS:** Lock your windows
- **INTERIOR:** Put your interior lights on a timer
- **DOORS:** Double or deadlock your doors
- **EXTERIOR:** Put your exterior lights on a sensor
- **(N)EIGHBOURS:** Keep an eye out for neighbours

As with all types of crime, prevention is much better than cure. Taking simple measures, such as locking your windows, leaving indoor lights on a timer, double or deadlocking your doors, and having exterior lights on sensors, can significantly reduce your chances of being burgled.

Opportunity plays a big role in enabling crimes to be committed, particularly burglaries. Most domestic burglaries are committed by opportunists. Criminals will look for homes that:

- ❖ seem unoccupied
- ❖ have little or no apparent security

- ❖ have doors or windows left open, or
- ❖ where they think they won't be seen.

A home's overall impression will influence whether a burglar targets it. As a general rule, if it looks like there is someone inside, the burglar is likely to go elsewhere. A home in a dilapidated state will seem easier to break into, so a simple deterrent might be tidying up a garden, or repainting doors and window frames.

One crime often produces the opportunity to commit another. For example, a burglar may return after a break-in because they know when the owners will likely be out and can expect the property to be full of new replacement items.

Before upgrading your home security, think about what part of your home seems more vulnerable, how often you are at home, and when it is empty. Then speak to your local Neighbourhood Officer to get advice bespoke to your needs. Wherever possible, always ensure security products you purchase are Secured by Design or Sold Secure – these are good quality, independently tested products; and use Master Locksmith Association (MLA) approved locksmith to fit your locks or to ask for expert advice about upgrading your home security.

Remember, many security products may fail because of how they have been fitted or the quality of their fixings. Products must be fitted correctly and with robust fixings.

Keep 'em peeled.

Best wishes,

Hannah Shaw,

Parish Council Clerk,

Tel: 01530 249945 Email: clerk@newtownlinford.org.uk



News from Newtown Linford Parish Council

Have you looked at the website recently?

www.newtownlinford.org.uk



Greetings!

Following on from last month's article regarding speeding in the village and the safety of roads around the Parish, it has come to our attention that supermarket delivery drivers are sometimes causing a hazard by parking on double yellow lines when delivering to properties.

With this in mind, I contacted the Home Delivery Manager at our local Tesco Extra store who has advised that their delivery drivers are permitted to park on private driveways when delivering groceries, if invited to do so by the homeowner. To do this, online shoppers can add a note to the delivery instructions upon ordering to say 'Please park on the driveway'. If residents with ample parking could consider doing this please, regardless of who you shop with, it would be greatly appreciated by ourselves and neighbours who may have witnessed problems caused by delivery drivers parking on double yellow lines. Thank you.

On with the news....

Bob Bown Memorial Field

I am very concerned regarding the installation and use of non-permitted apparatus, such as rope swings, at the Bob Bown Memorial Field. A sign has been installed at the park within the last year stating action may be taken against anyone found installing rope swings and that use of them is at a person's own risk. The height in which the rope swings operate, could cause serious injury should the rope break or the branch give way whilst in use, or if a person accidentally fell whilst in motion. It is my duty to consider all reasonable measures that can be taken to prevent harm or injury and I am therefore, now considering reporting the matter to Charnwood Borough Council to suggest THE branch be lopped off to prevent any further rope swings being installed and particularly as the branch may have also weakened over time, thus creating a further hazard.

If your child frequents the park, please advise them of the dangers of using non-permitted rope swings.

Cemetery and Churchyard

A new bench will be installed at the Churchyard imminently in memory of

Janet Neaverson. In preparation for this, hard standing will be installed and the ever-increasing compost heap will be removed and a new, smaller, more suitable composting area, will be found.

Although Councillors and I very much appreciate the work of volunteers at the Churchyard, any decisions with regards to the maintenance of the Churchyard must come through the Parish Council first please, to avoid any conflict with other future projects we have in mind.

I am very much looking forward to the Lovefool 90s nights on Friday 10th and Saturday 11th November and seeing many of you there! Tickets are still available for the Saturday night should you like to join us, or why not ask your friends and family to come along too? Thank you for your support.

Stay well, stay safe.
Best wishes,

Hannah Shaw
Parish Council Clerk
Tel: 01530 249945
Email: clerk@newtownlinford.org.uk

Next Parish Council Meeting
Wednesday 1st November @ 19:15

Reading about the problem re supermarket delivery drivers, sometimes they can have no choice because of how our houses were built. We do have a note on ours to say please park on the drive, but they can be reluctant because of our trees scraping the top of their vans. However another group of inconsiderate drivers do have an option. There are a small number of parents at the school who insist on parking on double yellow lines and even the pavement at the bottom of Grey Crescent. As the photo shows, this causes cars having to drive on the wrong side of the road to exit Grey Crescent. I wrote to the school, Hannah and to David Snartt. David kindly passed this onto the police and copied in



Deborah Taylor our County Councillor.

PC Greg Moore attended the school and spoke to the two headmistresses who will send another email out to parents. They also gave a little talk to some of the children whilst there. That afternoon, they stayed outside the school so parents would know they were there and unsurprisingly there was no issues that day.

Hopefully the children will be able to educate the parents on what illegal means!

**Carole
Editor**

E.W. Goddard & Sons

(Established 1970)

**QUALIFIED PLUMBERS
Bathroom and Tiling
Specialists**

**All Building Work
and Renovation**

305 Markfield Lane
Markfield LE67 9PR

Telephone

**01530 245316 or 0116 2311672
07961 319908 or 07961 319907**

Contributions to Village Magazine

Can we have your contributions for the **December 2023/January 2024** issue by **15th November 2023** please.

**Send to the Editor, Carole Heubeck,
5 Grey Crescent, Newtown Linford (01530 244790).
E-mail newtownvillagemagazine@outlook.com &
heubecks@gmail.com**

Please could you send any emails to the above email addresses. If you do not receive an acknowledgement of your email from the gmail account within 3/4 days - please contact Carole, the Editor direct on the above number to check we have received it. The village email is not checked so frequently but I don't lose articles from there!

The opinions expressed by the contributors are not necessarily those of the Editors and they reserve the right to amend, shorten or not print any article or advertisement submitted for publication. Whilst every effort has been made to ensure the accuracy of the information printed in this magazine, and advertisements are accepted in good faith, no liability can be

Printed by Barkers Printers Leicester 0116 2120983

COVERING *Martin Page* YOUR LOCAL

The Newtown Linford Area

Tree Surgeon



charnwood

Have you considered your trees may need some maintenance from time to time. Are your trees maybe too tall blocking light, unsafe or untidy?

Or maybe you need to remove that stubborn stump.

Do your hedges, Conifers or shrubs need trimming.

With 30 years of experience working with trees in your area, I would be pleased to offer you free advise and a free quotation.

I also sell high quality firewood logs



call me now on

01530 251312

Constantly Recommended



- Fully Insured
- Local family business
- Open & tidy service



PEST CONTROL

DOMESTIC • COMMERCIAL • INDUSTRIAL



Which?
Trusted trader



**Guaranteed Service
No Add On Charges**

**Wasps * Fleas * Ants * Rodents * Bird
Control * Fly Killers * Fly Screens *
Clinical & Sanitary Waste Disposal**

FOR A FAST, RELIABLE RESPONSE

CALL FREE ON

0116 234 0078



Target

ensuring a pest free environment

www.targetpestcontrol.co.uk | Info@targetpestcontrol.co.uk

© 2008 Target

Anstey & District

Est. 1992 Independent Funeral Services

0116 234 0548

We can take care of every detail, advise and help you on each and every step of the way.

- Qualified Funeral Directors
- Floral Tributes arranged
- Hearse, Limousines and alternatives available
- Monumental Service
- Car parking available
- Online tribute and donation profile
- Catering suite
- Chapels of rest
- Funeral plans available
- 24 hour service



Funeral arrangements can be made in the comfort of your own home if preferred.



Golden Charter 
Funeral Planning for Life Ltd.

Talbot House, Leicester Road, Anstey, Leicester, Leicestershire LE7 7AT
Email: talbotthouse@ansteyfunerals.com Website: www.ansteyfunerals.com