

# Newtown Linford Magazine

**ISSUE NUMBER 137**

## **CONTENTS**

<b>Church News</b>	<b>3, 20/21</b>
<b>Coffee &amp; Cake</b>	<b>4</b>
<b>Scarecrow Weekend</b>	<b>7</b>
<b>Brownies</b>	<b>12</b>
<b>Tennis Club Dance</b>	<b>14</b>
<b>Bradgate Park</b>	<b>17</b>
<b>Boules</b>	<b>23</b>
<b>Ramblers</b>	<b>25</b>
<b>Forest Fitness</b>	<b>27</b>
<b>From the Records</b>	<b>28</b>
<b>Gardening Club</b>	<b>30</b>
<b>Neighbourhood Watch</b>	<b>32</b>
<b>Friends of Charnwood Forest</b>	<b>33</b>
<b>Tennis Tournament</b>	<b>33</b>
<b>Parish Council</b>	<b>35</b>



**September 2016**



**David Allen**  
For Your  
**VERMIN CONTROL**



**RATS, MICE, MOLES, RABBITS, WASPS, ANTS, WOODWORM.**

**DO YOU HAVE A PROBLEM WITH ANY OF THESE?  
LET ME SOLVE IT FOR YOU!**

**10 ASIIBY ROAD, SHEPSHED, LE12 9BS**  
**Telephone: 01509 502664**

**24 HOUR SERVICE**

Consult

**WALTER MILES**

**(Electrical Engineers) LTD**

Est. 1928

For All Your Electrical Requirements

**LIGHTING, HEATING, POWER, REPAIRS, RENEWALS  
AND MAINTENANCE**

Member of the Electrical Contractors' Association and N.I.C.E.I.C

**Office and Works** Marshall House, West Street, Glenfield, LEICESTER, LE3 8DT  
Telephone 0116 287 2400 Fax 0116 287 252  
E-Mail [office@waltermiles.co.uk](mailto:office@waltermiles.co.uk)

*Horseshoe Cottage Farm*

Luxury bed and breakfast accommodation



Approved Working with us is a  
guarantee of the highest quality  
Beds & Bathrooms Accommodation  
of the year  
As Seen on TV

Free Home Visits, a range of our  
Amazing Christmas Services &  
Invaluable services in the  
East Midlands



**Rosecliffe Road, Hallgates, Cropston, Leicestershire LE7 7HQ**

**Tel: + 44(0)116 2350038**

Email: [linalajee@horseshoecottagefarm.com](mailto:linalajee@horseshoecottagefarm.com) Website: [www.horseshoecottagefarm.com](http://www.horseshoecottagefarm.com)

# The Bradgate

Group Parish



It's been a month or so now since the EU referendum. The wave of resignations and political infighting that began the day after seems to show no sign of stopping at the time of writing. The argument between fervent supporters of both sides in the debate has also not abated.

Whatever you thought of the result – some reading this will still be delighted, others dejected – most people I have spoken to have shared the same sense of disappointment in the quality of the discussion. There are two things I think were seen to be clearly lacking which we desperately need to regain: respect and humility.

**Respect:** for the truth, as both sides were criticised by official bodies for 'creative' use of statistics in their campaigns; for each other: as words like 'ignorant', 'bigoted', 'craven' and 'gullible' – ones printable were thrown around like confetti at a wedding. We seem to have collectively come to believe that anyone who disagrees with us is either wilfully deluded or being deceptive.

**Humility:** to consider that just possibly someone else experiences life differently, weighs the evidence differently, has a perspective that deserves consideration. Humility: that I am not infallible in my judgements, perfect in my knowledge. At the time of the last Civil War in this country one of the main players, Oliver Cromwell, wrote this 'I beseech you, in the bowels of Christ, think it possible that you may be mistaken.'

Christian Churches have never been immune from disagreement – either now, or in their earliest days – and Paul had to write to several to help them deal with it well. To one Church he wrote this: "The entire law is fulfilled in keeping this one command: 'Love your neighbour as yourself.' If you bite and devour each other, watch out or you will be destroyed by each other". Jesus, when asked to clarify exactly who our neighbour is, pointed out someone who was different in race, opinion and lifestyle.

Jesus himself, no stranger to arguments, demonstrated respect for all individuals, and, despite being God and wiser and more powerful than we can imagine, humbled himself even to death for our sake.

**Richard**

# VILLAGE DIARY



## September

6th	Boules
8th	Macmillan Coffee Morning
9th	Tennis Club End of Season Dinner Dance
10th	Village Ramblers
11th	Junior & Senior Day Tennis Tournament
13th	Ramblers
19th	Friends of Charnwood Forest
24th	The Linford, The Zufflers Live Band & Hog Roast
25/26th	Scarecrow Weekend
26th	Parish Council

## Regular events

Monday afternoon	Mature Movers fitness class V. Hall
Mondays 8pm at the Church	Bell Ringing
4th Tuesday of the month	Gardening Club
3rd Wednesday of the month	Ladies Luncheon Club
Thursdays 11.15	Coffee Mornings for all, Village Hall
Thursdays 6.30	Brownies, Sunday School Rooms
3rd Thursday	Gentlemen's Lunch Club
Boules	Phone 01530 245373 for more info

## Plumbing & Heating

- City & Guilds qualified
- 25 Years Experience
- All Plumbing & General Maintenance Work Undertaken
- Reasonable prices
- Free Estimates

References available from local satisfied customers.

**Nick Phillips** Bradgate Road, Markfield

**Tel: 01530 244981 Mob: 07779 698292**



# Coffee & Cake @ Newtown Linford Village Hall

Thursday Morning 11.15am - Free

All Welcome - All Ages



## Coffee and Cake Duty Rota September 2016

### September

1 <sup>st</sup>	Sue Clarke & Margaret Bloor	242000/245078
8 <sup>th</sup>	Iris & Peter Sayer - <b>Macmillan Coffee Morning</b>	243822
15 <sup>th</sup>	Newtown Linford School - Head Christine	242370
22 <sup>nd</sup>	Zoe Renolds & Sue Birkett	07803292704/244317
29 <sup>th</sup>	Bev Griffiths & Sue Dobby	01509 890264/245366

### October

6th	Janet & David Brunton	242662
13th	Carol Ann Gill & June Hallam	243433/0116 2394808
20th	Mary & Wes Raynor	243042
27th	Ruth Goddard & Anne Smith	245316/242639

Please note:- The Macmillan Coffee Morning will be held on Thursday September 8th. There will also be some presentations that day. Please support as you have in previous years. If anyone is happy to bake please contact Carol Ann on 01530 243433



Please swap with someone else if you are unable to do your duty. Pass on the hall key to the next people on duty.

**An opportunity everyone to catch up on village news and activities and to meet your fellow neighbours**

**YOU'RE  
INVITED**

Macmillan Coffee Morning  
Thursday 8th September 2016  
At The Village Hall  
Coffee & Cake Gathering

11.15am to 12.30pm  
Coffee and delicious Cake  
Raffle

Please support a great  
charity and join us



5 Offers of baking gratefully received



# THE BRADGATE NEWTOWN LINFORD



## FAMILY PIZZA DEAL

2 Adult Pizzas, 2 Kids Pizzas  
& 2 Sides

**£24.95**

Available Mon-Fri 4pm-7pm  
Additional Adult Pizza £8.00  
Additional Kids Pizzas £2.00

## TWO PIZZAS FOR £16.95

Available Mon - Fri  
12noon - 7pm

## KIDS PIZZA PARTIES

### IT'S PIZZA TIME

Supervised Pizza building and  
Ice Cream Sundae making  
- both part of the party meal.  
Unlimited cordial and pass the  
parcel.

Mon - Fri 4pm - 6pm.  
Max 12 children. £11.95 per child

### PIZZA PARTY DIY

We serve the Pizzas and Ice  
Cream Sundaes, you provide the  
games.

Mon - Fri 4pm - 6pm and  
Sat 12 noon - 5pm.  
Hosted in our Private Party Area.  
Max 25 children  
£7.95 per child

## TUESDAY IS GRILL NIGHT

2 x 10oz Gammon Steaks  
& 2 Desserts **£24.00**

2 x 8oz Rump Steaks  
& 2 Desserts **£28.00**

2 x 8oz Sirloin Steaks  
& 2 Desserts **£32.00**

## Fixed Price Menu

Two courses **£13.00**  
Three Courses **£16.50**  
Available Mon-Fri  
12noon - 3pm

## Christmas Party and Christmas Day bookings now been taken

Main Street, Newtown Linford, Leicestershire, LE6 OAE  
Tel: 01530 242 239 [www.thebradgate.com](http://www.thebradgate.com) [contact@thebradgate.com](mailto:contact@thebradgate.com)



**Newtown Linford  
Scarecrow Festival**

**24th /25th September 2016**

**Open Church all weekend**

**Saturday 24th**

Bell Ringing in Church

Newtown Linford Primary School Fete  
with teas/cakes and stalls

**Sunday 25th**

Harvest Celebration in Church 10.30am  
Caroline and Claire's preschool activities  
outside the village hall

Morris Dancing at various places  
in the village including The Linford

**Midday**

Teas and Cakes in Village Hall  
Along with stalls and activities

**Prize Giving 4pm**

**Programmes 50p from  
Village Store, School Fete (Saturday) and  
Village Hall (Sunday)**

**Entry forms In the magazine**

Look out for posters appearing throughout the  
village during September for  
times of events and updates



**Scarecrow Festival 2016**

## Newtown Linford Scarecrow Festival Week- end

24th and 25th September 2016



It's time to get ready for balmy evenings, ripening fruits and the changing season. And with that comes one of the favourite village events of the year - the Scarecrow Festival weekend.

So, get your old clothes out of the wardrobe and off the hangers, make ready your scarecrows, submit your entry form, and enjoy the weekend!

Entry forms must be in by 4pm on Friday 23rd September, in order to be included in the programme - please deliver them to the post office on Main Street or, if you struggle to get there, email them to [beatehelmke@web.de](mailto:beatehelmke@web.de). If you are late, you can still put a scarecrow out, you just won't be included in the programme – don't worry you can still be judged and the people can vote for you, please just drop us an email with your entry details by Saturday morning.

As always, programmes will be available for 50p each at the Post Office shop throughout the weekend and we will have some mobile supporters in the village selling programmes.

Don't forget to get your scarecrows outside and assembled by 10am on Saturday morning. Someone will be available to meet and greet those people who want to display scarecrows in the 'Scarecrow Patch' in the Bradgate conservatory tearoom gardens from 9.30am-10.30am on Saturday 24<sup>th</sup> September.

You may wish to take your scarecrow, or elements of it, in for the night from Saturday to Sunday - please don't forget to put it out again so that all the visitors to the village over the weekend can see it.

Local businesses, and Bradgate Park, are again supporting the weekend - don't forget to contact us if we haven't yet been able to get in touch with you, and we'll be happy to talk about putting an advert for your business in the programme. Please contact Chris via email at [chris@wroe.co.uk](mailto:chris@wroe.co.uk) or Beate at [beatehelmke@web.de](mailto:beatehelmke@web.de) (or tel. 01530 245198).

A big thanks to everyone who has so far helped or said they'll be happy to be involved - it's still not too late: if you'd like to help us out over the weekend, or if you have any questions or queries, please do get in touch - we'd be very happy to hear from you.



## How to Make Your Scarecrow – suggested method

Cut a 10 foot bamboo pole into two pieces, one 4 feet long and the other 6 feet long

Place the 4 foot section across the 6 foot section piece, 1 foot down from the top

Wire the two pieces together with floral wire, twine or raffia

Place an old shirt on the short cross-piece of the frame and button the shirt in front

Stuff the shirt loosely with straw, dry leaves or rags

Place gloves at the end of the 'arms' and secure them with rubber bands

Pull one leg of a pair of trousers onto the long bamboo pole. The other leg will hang freely

Tuck the stuffed shirt into the waist of the trousers

Secure the waist of the trousers to the pole with a rope or belt, tying the belt or rope to the cross-piece if necessary, to keep the pants from falling down

Stuff the pants with stuffing material of your choice

Make a head for your scarecrow by stuffing straw into a pillowcase. Tie the pillowcase opening onto the top of the long stake with rope. Or you could use natural materials - a large cabbage or melon, stuck onto the top of the stake.

Draw a face with felt-tip pens, or glue on buttons for eyes and yarn for a mouth, or stick in fruit and vegetables for the eyes, nose and mouth, using cocktail sticks

Stick the scarecrow in the ground or tie it securely in another location.

Think about your theme and whether you want to add any accessories/create a background

### Tips

Be creative! Scarecrows can be male or female, animal or alien!

Dress up your scarecrow according to the occasion, or try and think of a theme - one idea is to look at what has been current in the news or events over the last year

If you're in it to win it: the judges will be looking for creativity, evidence of effort and your own handiwork, and originality



**COVERING** *Martin Page*  
**YOUR LOCAL**  
**Tree Surgeon**

The Newtown Linford Area

Have you considered your trees may need some maintenance from time to time. Are your trees maybe too tall blocking light, unsafe or untidy? Or maybe you need to remove that stubborn stump. Do your hedges, Conifers or shrubs need trimming. With 30 years of experience working with trees in your area, I would be pleased to offer you free advise and a free quotation.

**charnwood**

**I also sell high quality firewood logs**

**call me now on**  
**01530 251312**

Fully insured  
 Local family business  
 Clean & tidy service

Constantly Recommended






**PEST CONTROL**  
 DOMESTIC • COMMERCIAL • INDUSTRIAL

**Guaranteed Service**  
**No Add On Charges**

Wasps \* Fleas \* Ants Rodents  
 Bird Control \* Fly Killers \* Fly Screens \*  
 Pet Screens \* Feminine Hygiene

**FOR A FAST, RELIABLE RESPONSE**  
**CALL FREE ON**  
**0116 234 0078**

**target**  
 making a pest-free environment

[www.targetpestcontrol.co.uk](http://www.targetpestcontrol.co.uk) | [info@targetpestcontrol.co.uk](mailto:info@targetpestcontrol.co.uk)







10

# Scarecrow Weekend 2016 - Entry Form

Name of Scarecrow entry.....

Name of Entrant/s.....

Address.....

.....  
Location of Scarecrow (at own address or in scarecrow patch)

.....  
Phone no./email address.....

## Categories

Please tick one category below:

10 years old and under	
Teens (11-17 years old)	
Family	
Group Entry (including businesses)	
Adults (18+)	

Please hand completed form in to a member of staff at the post office on  
Main Street, on or before

**Friday 23rd September 2016**

**or email [beatehelmke@web.de](mailto:beatehelmke@web.de)**

to be entered into the competition/  
included in the programme

**Good luck and have fun!**



# Broughtons

Traditional Lighting & Hardware

Since 1888



Meretti Luce 

**NEW for 2016 - Italian Lighting & English Door Furniture**



Showroom & Coffee Lounge

Mon - Sat 9am - 5pm

Sundays 10am - 4pm

The Old Cinema Cropston Road Anstey Leicestershire LE7 7BP

0116 232 3175

[www.broughtons.com](http://www.broughtons.com) [sales@broughtons.com](mailto:sales@broughtons.com)



## Brownies

**Sports Night** A very popular night - playing traditional sports, games and plenty of water games which the Brownies love



## Brownies

Our 1926 picnic at Old John was to mark the Queen's 90th birthday. Eating food that would have been popular in that era, with no plastic containers and sandwiches wrapped up in paper bags!!





Newtown Linford Tennis Club  
*End of season Dinner Dance*



at  
Newtown Linford Village Hall  
Friday 9th September 2016



Dancing to Dan Goode - Saxophonist and DJ  
Dinner & Licensed Bar

**Black Tie & Glam Frocks**



7pm  
Dinner 7.30pm

Tickets £20



## Have You Heard About The Grey Lady Kitchen & Deli?



Our restaurant The Grey Lady Kitchen & Deli is a hidden highlight, loved by locals and people lucky enough to find us driving past. Our focus is good homemade food, sourced locally from our outstanding suppliers so you can be assured that all the boxes are ticked.

### Opening Times

Mon—Sunday 9am-5pm

Friday Evening For Fish & Fizz 6pm-9.30pm



Beat the queue  
telephone your  
order on:

01530  
245 801

**Friday Evenings Enjoy Fish & Fizz for £12pp**

Grey Lady Kitchen & Deli, 544 Bradgate Road, Newtown Linford, Leicestershire, LE6 0HB

Telephone: 01530 245 801

Email: [info@thegreyladydeli.co.uk](mailto:info@thegreyladydeli.co.uk)

<http://www.thegreyladydeli.co.uk/>



## Have You Heard About The Grey Lady Restaurant?...

Nestled in Newtown Linford in the heart of Charnwood Forest overlooking Bradgate Park, yet less than 20 minutes from Leicester. Set in three acres with an enviable outside drinking and dining area overlooking the forest.

### Fixed Price Lunch Menu

12-2pm Mon-Sat

2 Courses for £15

3 Courses £18.50



### Opening Times

Mon— Sat Lunch 12pm-2pm

Mon—Sat Eve 6pm-9pm

Sunday 12pm-3.30pm

The Grey Lady, Sharpley Hill, Newtown Linford, Leicester,  
LE60AH

Tel: 01530 243558

[info@the-grey-lady.co.uk](mailto:info@the-grey-lady.co.uk)

<http://www.the-grey-lady.co.uk/>



Garrett-Long  
solicitors



# For all of your legal Requirements locally

We can help you with the following services:

- Buying & Selling a Property
- Tenancy Agreements & Disputes
- Transfers of Ownership
- Re-Mortgages
- Lasting Power of Attorney
- Wills & Probate
- Accident & Injury Claims
- Debt Recovery
- Divorce & Separation

Free initial advice and a competitive quote call

**0116 2364875**

Florence Villa, 5 Leicester Road, Anstey, LE7 7AT



## From the Park Making Summer Last Longer



August is our busiest month of the year on the Park, apart from those rare years when the quirks of the British weather give that accolade to July. On busy weekends, it seems as though the floodgates open and a human tsunami can be seen making its way down the carriageway towards the Deer Barns.

One of the things that we spend a lot of time thinking about is how to engage with the great mass of humanity that descends on the Park in the summer. What I call the Bradgate Paradox is that the Park is so important and special to academics and experts from such a wide range of disciplines – geologists, archaeologists, historians, botanists, entomologists all find things here to get very excited about – but most people locally love Bradgate as a place to walk the dog, feed the ducks and play with the children, much as they might any other public park. Not that there is anything wrong with this, far from it – Charles Bennion gave Bradgate for “a public park and recreation ground” after all – but we just feel that they are missing so much.

Unfortunately, sometimes welcoming the “public park and recreation ground” visitors is not compatible with exercising the responsibilities that we have for the care of the Park’s heritage. An example of this is the Ruins where the staff on duty have been spending too much of their time stopping people climbing on the walls and even riding bicycles on the Scheduled Monument – sometimes getting verbally abused and even threatened in return – and not enough answering questions and engaging with those visitors who want to discover more about one of the most important houses of Tudor England. Having opened the gates of the Ruins to all comers on selected days for a number of years, we will in future be adopting a different approach and access at weekends during the summer will only be by joining an organised tour, booked at and starting from the Visitor Centre.

The Visitor Centre welcomed 10,000 visitors during its first five weeks of opening and the comments in the Visitors Book show how well it has been received with a typical one reading “I have been coming here for 40 years and have learned so much about the Park that I never knew before.”

The Visitor Centre is primarily staffed by volunteers and we are still looking for more people to join the team so if you have a passion for

17 Bradgate that you would like to share with others and can spare a

minimum of two days per month, please email [visitor@bradgatepark.org](mailto:visitor@bradgatepark.org)  
Great expertise is not required, just enthusiasm and a smile!

As part of the Visitor Centre development we converted the old entrance lobby to a kiosk serving takeaway hot and cold drinks and ice creams and this has proved very successful in reducing queue times at the Deer Barn Tearooms – no more queuing for half an hour for a cup of tea and a piece of cake!

One of the things we are trying to do is extend our season beyond the end of the summer holidays and this year we are staging a month of events in September. The full programme is still being finalised as I write but highlights include a book signing by Leanda de Lisle, author of “The Sisters Who Would Be Queen” and a costumed talk on Elizabeth I by Lesley Smith, Curator of Tutbury Castle. Our popular Living History Weekend takes place on 10<sup>th</sup> & 11<sup>th</sup> September and once again members of the Sealed Knot will be colonising the field behind the cricket pitch from Friday onwards.

The Edible Forest Festival, celebrating the produce and producers of Charnwood Forest, is being held between 16<sup>th</sup> and 18<sup>th</sup> September. Full details and tickets from [www.edibleforest.co.uk](http://www.edibleforest.co.uk) Our event, Tea in the Tower in Old John Tower in association with the Grey Lady Deli. Sold out within the first three days.

We will also be holding a number of walks and talks celebrating various aspects of the Park’s heritage.

For details of all events apart from The Edible Forest, including ticketing arrangements, keep an eye on our website and Facebook page.

Elsewhere, our restoration of the Park’s grassland habitats continues – the latest reward for which has been a wonderful show of harebells – as we carry on our work of relegating the bracken from its position as the dominant vegetation type to one component of a mosaic of many different ones. We unusually had continuous fine weather for cutting and baling the hay from Swithland Meadow and we hope that some of the seeds from this will add to the wildflower populations on the Park when we feed it to them over the winter.

Enjoy the remainder of the summer and I look forward to seeing you on the Park.

**MARTIN ALLEN**

**FLOORING &  
FRENCH  
POLISHING**

**YOUR LOCAL  
FLOORING SPECIALIST.**

**All timber floors laid**

**All existing timber floors sanded  
and refinished**

**Any colour or finish**

**Free quotations  
call Martin.  
0116 2165107**

**SYKES JEWELLERS**

**WATCH, CLOCK &  
JEWELLERY REPAIRS**

**WATCH BATTERIES AND  
STRAPS FITTED WHILE  
YOU WAIT**

**8 BRADGATE ROAD, ANSTEY  
TEL: 0116 236 2510  
sykesjewellers.co.uk**



## **HYPNOTHERAPY**

**MARGARET GEE DAH Hyp**

Confidential, professional and friendly help with .....

Stress Management      Anxiety and Worry  
Fears and Phobias

Relationship Issues      Stop Smoking

Lack of Confidence and Self Esteem

Weight and Body Image Problems

And more.....

Charnwood House, 516 Bradgate Road  
Newtown Linford, LE6 0HB

Please call for more information or to book an appointment

**01530 242958**

## NEWTOWN LINFORD SERVICES

DATE	NEWTOWN LINFORD	GLENFIELD
4th September  15th Sunday after Trinity		9.00am Holy Communion (RT)
	10.30am Holy Communion (JW)	10.15am Worship as One (RT)
		6.30pm Evensong (RT)
11th September  16th Sunday after Trinity	8.00am Holy Communion (RT)	
	10.30am Morning Prayer (JW)	10.15am Holy Communion (RT)
		6.30pm Compline (RT)
18th September  17th Sunday after Trinity		9.00am Holy Communion (RT)
	10.30am Holy Communion (RT)	10.15am Service of the Word (BH)
		4pm Messy Church
		6.30pm United Service at St Peter's
25th September  18th Sunday after Trinity	8.00am Holy Communion (RT)	
	10.30am Harvest Celebration (RT)	10.15am Holy Communion (PH)
		6.30pm Holy Communion (RT)

### MIDWEEK COMMUNION SERVICES—September

<b>GLENFIELD</b>	Wed 10.45am	7th	14th	21st	28th
<b>NEWTOWN LINFORD</b>	Thur 10am	1st			



## **CHURCH REGISTER** **NEWTOWN LINFORD**



### **Weddings**

9th July ~ Timothy William Davenport Hacket & Hannah Rose Beckett  
16th July ~ Richard Adam Howard & Rachel Grace Fields  
20th August ~ Andrew James Watson Badcock & Elizabeth Margaret Griffiths  
20th August ~ James Perry & Amey Rayns  
27th August ~ James Driver & Lucy Rumming

### **Baptisms**

None

### **Funerals**

None

**Newtown Linford Church now has its own Website - why not check it out.**

**[www.allsaintsnewtownlinford.org.uk](http://www.allsaintsnewtownlinford.org.uk)**

### **Church Contact Details**

Richard Trethewey  
Rector of St Peter's, Glenfield, and All Saints, Newtown Linford  
0116 287 1604  
Email: [richard@stpetersandallsaints.org.uk](mailto:richard@stpetersandallsaints.org.uk)

Parish Office: Bekki Williamson (9am - 11am weekdays)  
0116 239 3768      Email: [office@bradgateteam.org.uk](mailto:office@bradgateteam.org.uk)

# **E.W. Goddard & Sons**

(Established 1970)

**QUALIFIED PLUMBERS  
Bathroom and Tiling  
Specialists**

**All Building Work  
and Renovation**

\*\*\*\*\*

305 Markfield Lane  
Markfield LE67 9PR

**Telephone**

**01530 245316 or 0116 2311672  
07961 319908 or 07961 319907**

# **Peter Henton**

**Domestic Appliance  
Repairs**

**Ex Zanussi Senior Engineer**

**Tel 0116 2896529**

**Mobile**

**07711 265414**



**Professional carpet &  
upholstery cleaning and repair  
services**

- ◆ Curtains cleaned in situ
- ◆ Expert spot & stain removal
- ◆ Guaranteed 5 year anti-stain policy
- ◆ Hand finishing of swags & tails
- ◆ Mattresses deep cleaned
- ◆ Pest control, unpleasant or destructive pests removed

**Telephone 0800 328 2927**

**[www.safeclean.co.uk](http://www.safeclean.co.uk)**

**PRIVATE AND  
COMMERCIAL**

**INTERIOR / EXTERIOR**

**A.B. SHERRIFF**

**Established 1988**

**PAINTER &  
DECORATOR**

**42 BRADGATE DRIVE  
WIGSTON, LEICESTER**

**Telephone 0116 288 1048**

**Mobile: 07719 366 569**

## Boules

We have waited in vain so far this year for a warm sunny Tuesday evening for our games of boules. At least in August it did not rain though the skies were overcast. We had a good turnout with fourteen players at the Blue Bell at Hoby. The July winner, Keith Turner, presented the Brian Chell cup to the new winner, David Woodward, who has now won twice this season.

### Boule Facts 3

The modern game is believed to have descended from a centuries old version played by sailors on shore leave in which canon balls were used. Today boules, always thrown under-hand, are made of hollow steel, stainless steel, or bronze weighing typically between 710 and 720gms.

The process of casting two halves and welding them together to form a hollow sphere was patented in 1923.

Players identify their boules by the number of striations (circular lines) inscribed in the surface which number between one and four. A set of boules can be 4, 6 or 8 each suitably marked. If you play a game of two in a team you use 3 boules and in a three man team 2 boules each.

More Boule Facts next month. Find out how some very well known words originate from the game of Boules.

Our next game is on Tuesday 6th September, meet at the Village Hall at the earlier time of 6.00pm. New players always welcome.

**Dick Howard**

## Revive Your Three-Piece Suite!

Have Your  
Existing Cushions  
Professionally  
Re-Filled



There's no need to throw out your sofa or easy chairs just because the cushions look a bit battered and bruised!

We will supply and cut high quality foam inserts to give your furniture a complete make-over!

Call for a quotation today!

**Simon Shuttlewood**  
*quality upholstery*

7 Edward Street, Anstey, Leicester LE7 7DP  
Telephone: 0116 234 0350

# THE ZUFFLERS

**LIVE at The Linford**  
**SATURDAY 24<sup>TH</sup> SEPTEMBER 2016**



**TICKETS ON SALE AT THE BAR NOW**  
**£10 PER PERSON INCLUDES HOG ROAST**  
**EVENING STARTS AT 7PM – FOOD AT 8PM – BAND AT 9PM**

**The Linford Club, 66 Main Street, Newtown Linford, Leics, LE6 0AG**



## Village Ramblers July /August Walks

A dozen walkers on the July walk followed the path on the outside of the park past Hunts Hill and down to the Hallgates entrance. Here we had a brief stop to enjoy an ice cream. We turned off the main path to return along the ridge passing near to Tyburn Hill. We finished a very enjoyable afternoon with tea and scones at Glenis's house. In August we ventured further afield



Newtown Ramblers in Bradgate Park, July 2016

to Burton on the Wolds. We passed through a spinney, and had a fine view of Prestwold Hall, where a wedding was held. We passed St . Andrews's Church, then through more woods to stay cool on a hot day. We could have extended the walk, but some members mentioned the Pub, so we returned to the village and enjoyed a cuppa etc

Thank-you to Mick who invited us to join the Cathedral Walkers to St Bartholomew's Church at Quorn. While St Bart's is interesting it is the Farnham Chapel that added the icing to the cake. The Farnham Chapel is of national significance and of historic interest. It is not usually open to the public



St Bartholomew's church, Quorn

but by the grace of the Trustees of the Farnham Trust, we were given permission to visit. As usual we met in the local pub, the White Horse Inn, – interesting church, good pub, nice walk and brilliant sunshine.

10th September walk. Meet opposite the village Hall to depart at 2p.m.

A warm welcome for everyone at



THE  
LINFORD

66 Main Street, Newtown Linford  
Tel: 01530 244012  
thelinford.co.uk



Free WiFi



Pool Table



Free Function Room Hire\*



Quiz every Wednesday



Guest Beers

*\*When booked with bar*



Ample parking

**£1 off all draught beers  
Fridays between 7 and 9.30pm**

sky SPORTS

**NOW SELLING CRAFT BEER**

BT Sport

*Dogs with well behaved owners welcome*



# Paint Wizard

All Types of Vehicle Body Repairs



Panel Resprays from £165

Scratch Removal from £45

Stone Chip Repair from £45

Windscreen Repair from £35

Colour Restoration From £65

Alloy Wheel Refurbishing from £45

Machine Polishing & Glaze from £100

Colour Code Bumper Resprays from £165

Colour Code Wing Mirror Resprays from £45

**Free Collection & Delivery Service Available**

**All prices are plus VAT charged at the prevailing rate**

**07850 456696**

**Proprietor Paul Beaver, Grey Crescent, Newtown Linford**

## **WHAT IS CLEAN EATING?**



I get asked this question time after time. There are hundreds of 'hip' people on social media touting the benefits of eating clean and changing your life, promoting recipe books and so on. The problem is many contain recipes with ingredients that you cannot find in your local supermarket or are very expensive.

Clean eating is simple really. It involves eating healthy lean proteins – eggs, chicken, turkey, pork, fish, occasionally lean red meats, lots of vegetables, fruits and a few starches – brown rice, sweet potatoes, whole wheat pasta/bread and porridge oats. Clean eating is about whole foods,— those that are un- or minimally processed, refined, and handled, making them as close to their natural form as possible. So don't think for one second that eating clean seems too complicated or hard work. In actual fact, I believe it's one of the simplest and most healthy ways to eat. You can make luscious soups, nutritious stews, protein pancakes, salads, meat with 3 veg and a healthy starch. The list is endless and many of these foods can be made in a big batch and frozen for future use.

It doesn't have to cost a fortune and shopping for it couldn't be easier. I usually tell my clients to stick to the front, sides and back in a supermarket. That's where you will usually find the fresh produce and the proteins.

Go on the internet, Pinterest is one of my favourite sites. It enables you to type 'chicken stew' into the search engine and it brings up lots and lots of chicken stew recipes for you to try. You can even save them in special folders. If you eat like this 80% of the time, you can enjoy your cake and chips without the guilt.

Eat clean, stay healthy!

### **Jacqueline Smith,**

*Personal Trainer / Nutrition Coach*

**The Forest Fitness Studio, Newtown Linford**

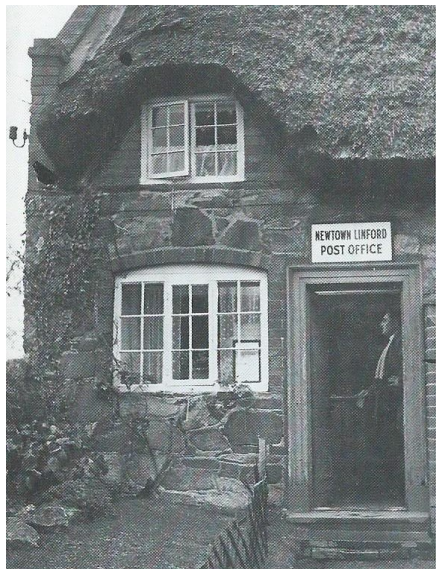
**Tel: 07876 897256**

**[www.forestfitstudio.com](http://www.forestfitstudio.com)**

**Email: [forestfitstudio@gmail.com](mailto:forestfitstudio@gmail.com)**

## From the Records - Janet Neaverson

Several people who attended a recent Thursday Coffee Morning were interested in one of Joan Stevenson's edited books about the village - "Memories of Newtown Linford and Bradgate House". There was one item about the Post Office hold up on November 30th 1968. The Post Office was in the front room of the end cottage on what is now the corner of Grey Crescent.



I was asked to look in the Village Records. I found the newspaper cutting for that date with the headline "**Intensive Search for Gunman**". It said County detectives were continuing an intensive search for a teenager who held up the postmistress Miss Iris Brown. The masked youth who was wearing a crash helmet demanded money from Miss Brown and her 83 year old mother in the village post office. He ran off with his long barrellled gun after Miss Brown said her brother was on the premises.

Kitty herself recollected the story for Joan Stevenson's book (she was one of the core group - who met for a year to help put the book together).

It was a Saturday morning. My sister Lil was home. She had been scrubbing the steps and mother was with us in the front room where we had the Post Office. From the window I saw a youth walking backwards and forwards, backwards and forwards. He had an air force scarf wrapped round his face. I said Lil, "I don't know what that boy is walking about like that for". Then he came in, a gun in his hand and said "This is a holdup! Nobody will get hurt if you give me some money". And he put a bullet in his gun.

People say your blood runs cold and mine certainly did. I said to him, I'm sorry, you've come the wrong day, the postman's just been. I had just emptied the telephone box across the road and there were pennies all over the table. I told my mother to fetch my brother, knowing he was nowhere about. .... The lad panicked, pushed his gun into the top of his trousers and ran out of the front door and down the road.

28 **Memories Of Newtown Linford and Bradgate House is printed by Kairos Press** and can still be purchased from supplier or on the internet.

# Charnwood...we have you covered



## SELLING?

- Accompanied viewings
- Open 7 days a week
- Free KPC and Floorplan
- Specialists in probate valuations
- Vendor care and sales progression negotiator
- Weekly regular updates

## LETTING?

- Full Management for 8% plus VAT.
- All properties advertised with a Floor Plan, no additional charges.
- We don't add a "Service Charge" to Contractor/Third Party Invoices, you get charged what the contractor charges us.
- We do not charge a "Set Up", "Tenant Find" or "Renewal" fee under our Full Management Service.

**ARRANGE YOUR FREE SALES/LETTINGS VALUATION BY CALLING**

Anstey Office  
15 The Nook, Anstey LE17 7AZ

**0116 235 3009**

Barrow upon Soar office  
65 High Street, Barrow upon Soar LE12 8PY

**01509 274474**

## Newtown Linford Gardening Club

The weather was glorious on the evening of our annual Summer Garden Party. Over eighty members and friends gathered at our Chairman's home and enjoyed a most convivial evening. A buffet of salmon, quiche and salad followed by gateaux, cheesecakes and cheese was served and washed down by glasses of Pimms, wine, beer and soft drinks. Everybody brought a prize for the raffle and a record number of 75 tickets were drawn to give them all away.

July has been a momentous month for two of our members. Joanne Kennedy who runs the 'Garden Blueprints' Garden Design Company created her first garden at the recent garden show at Tatton Park. She entered her garden in the 'blooming gardens' section and not only won a gold medal but also best-in-show in her category. This is a tremendous achievement on her very first occasion and we are all delighted for her.

Patricia Hardy, another of our members is also a member of the Cottage Garden Society and has had one of her photographs selected for their 2017 calendar, She is naturally delighted to receive this honour. Her work can be seen at an exhibition at the Shuttleworth Clarke Centre in Ulverscroft from 1<sup>st</sup> August until 30<sup>th</sup> September. Hopefully some readers will take the opportunity to view this exhibition.

Our August trip to Felley Priory in Nottinghamshire has proved very popular with a full coach of members aiming to enjoy a private visit to the gardens and a private lunch.

In September our speaker is Mick Eaton from Leicester Parks Department. He comes to us quite regularly and is always highly knowledgeable and entertaining and we never quite know what we are going to get until he arrives.

The opportunity to hear Fergus Garrett from Great Dixter has proved popular and all tickets have now been sold. We will have a packed hall to hear one of Britain's most charismatic gardening experts – a most prestigious highlight of our year.

We have welcomed a large number of new members this year and will be pleased if others want to join us. If you are interested in our activities just contact the Secretary (tel. 242452 or e-mail [01530242452@talktalk.net](mailto:01530242452@talktalk.net)), or come to one of our meetings to see how you like it before making a commitment (£2 for visitors). Alternatively give us a ring and ask for a copy of our programme for the coming year and we will be pleased to send one to you.

**Anne and David Couling**

# KEITH SMITH (ANSTEY) LTD



6 STADON ROAD ANSTEY LE7 7AY - TEL: 0116 2362395 - sales@keithsmithltd.co.uk

## FAST FREE LOCAL DELIVERY



### BOSCH SMS50T02GB

- Dishwasher
- ✓ 12 Place Settings
  - ✓ 5 Programmes
  - ✓ Half Load
  - ✓ Noise Level 50db
  - ✓ A+AA Rated

Save  
£20

2  
years  
guarantee

Now  
Only **£249.99**



### BEKO WMC1282W

- Washing Machine
- ✓ 1200rpm Spin Speed
  - ✓ 8Kg Load Capacity
  - ✓ Quick Wash
  - ✓ 15 Programmes
  - ✓ A+++AB Rated

Now  
Only **£229.99**



### HOTPOINT WMAQC741P

- Washing Machine
- ✓ 1400rpm Spin Speed
  - ✓ 7Kg Load Capacity
  - ✓ Quick Wash
  - ✓ 16 Programmes
  - ✓ A+AB Rated

Save  
£50

Now  
Only **£249.99**



### BOSCH KGN34VW24G

- Fridge Freezer
- ✓ Frost Free
  - ✓ 191/127 Ltrs
  - ✓ 3 Clear Drawers
  - ✓ A+ Rated
  - ✓ H185 x W60 x D65

2  
years  
guarantee

Now  
Only **£389.99**



### BOSCH WAB28162GB

- Washing Machine
- ✓ 1400rpm Spin Speed
  - ✓ 6kg Load Capacity
  - ✓ A+++AB Rated
  - ✓ Express Wash
  - ✓ 15 Programmes

2  
years  
guarantee

Now  
Only **£289.99**



### EFF B12S53N3GB

- Single Electric Oven
- ✓ Multifunction Cooking
  - ✓ A-20% Rated
  - ✓ 67 litre Main Oven
  - ✓ CircoTherm Fan
  - ✓ H59.5 x W59.5 x D55

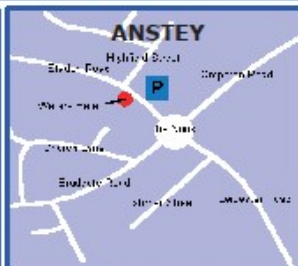
Now  
Only **£349.99**

### Fitted Kitchens

We are pleased to announce that we are now agents for A.W.E Kitchens and Bedrooms Who specialise in Bespoke made to measure kitchen & bedroom furniture  
Please call in for further details

### Internet Pricing with Personal Service

“Ask About our  
Same Day/Next Day  
Installation  
and Removal Service”





## Newtown Linford Neighbourhood Watch - A member of the Parish Council



**NHW.** On Saturday, 20<sup>th</sup> July I saw two Police/P.C.S.O. with the speed-gun on the bottom of Bradgate Hill. It was a very hot sunny day and the cars were parked everywhere so there was not much scope for speeding!! We have heard nothing further from County Hall about the proposed traffic situation.

A farmer at the Anstey end of the village left his bales of hay unattended for about 20 minutes and returned to find 5 of them had been completely burnt away. I think someone was walking through and had a cigarette lighter with them and nothing better to do.

Two men were reported in other villages knocking on doors claiming to be from a water company and asking to look at the taps. Whilst one occupied the owner the other one helped himself to items from the house. At the same time a resident in Newtown had one man come who asked to look under the sink and said he would be coming back to carry out further work. The Water Board reminds us that they never send out men to call without prior notice.

**ICE as it is known meaning in case of emergency.** For those of you who are new to having a mobile phone it is suggested that you put your next of kin or person to contact in your telephone under the contact name ICE. Then if you are unfortunate enough to be in an accident the emergency services will automatically look at your phone and contact them.

**Speedwatch** has finished and the signs were eventually taken down. It will be running again from 29<sup>th</sup> August for two weeks. Once again we would love your assistance if you can spare some time.

**Pam McMorrان**



### How to contact the Police

All incidents are to be reported to the Police and not the Beat Team **by calling 101**

They will then assess the situation and deal with the situation as they see fit. This may involve a vehicle from another area. If you wish also advise our NHW coordinator who will circulate if appropriate. The Beat

32 Team can no longer respond directly





President: Mrs Janie Martin

***Talk by Celia Sanger on Monday 19 September 2016  
at 7.30 Woodhouse Eaves Village Hall***

Celia is a volunteer at Calke Abbey with several roles. She leads groups of visitors on guided walks of the gardens, talking about history, plants etc. She is part of a recently formed research group and also participates in other activities such as Calke Alive when she represents 17th, 18th and 19th century members of Calke family, and also now co-ordinates the Calke Talks service.

This is her second year as a NT speaker, and she likes to keep her presentations informal, with a minimum of dates and lots of illustrations. Her talk covers the history of the gardens from the 18th century to the present time, with a little about the family and the work of the NT in the saving of the gardens over the last 25 years, to the present time.

Further information: Peter Bertram 01162 100 572 or [www.focf.org.uk](http://www.focf.org.uk)

**End of Season Tennis Tournament**

**Sunday 11th September -**

**Junior and Senior day tournament with bring and share lunch**



**A fun day for all the family.  
for further information  
and entry details call  
Charlotte and Nathan  
Jackson on**

**07896 349977 /**

**07827 801341**

**or 01530 249173**

**Your Favourite Compost has NOT left the area**

**Now available at**



**Cook's Farm Shop &  
Country Supplies**

Markfield Lane, Newtown Linford, LE6 0AB.  
01530-242214 [www.cooksfarmshop.co.uk](http://www.cooksfarmshop.co.uk)

**Premium Compost**



**Plant & Grow (Yellow Bag)**



**As previously available at Brookside Nurseries in Anstey  
We wish Margaret & Steve a happy retirement after  
many years of Commitment and Hard Work.**

**Also available Early 2017 - multi-varieties of Seed Potatoes!**

**\*\*\*\*Open Mon-Fri 9am-5.30pm, Sat 9am-5pm & Sun 10am-1pm\*\*\*\***



New landscaped  
garden

Dogs welcome inside

Log burning stoves

Under new ownership

Homemade cakes  
& scones

All-day breakfast  
& lunch menu



**We're open  
9am - 4.30pm  
Monday - Sunday**



**The Old Post Office Tea Room & Store**

550 Bradgate Road, Newtown Linford, Leicestershire, LE6 0BH

Tel: 01530 242709



[/OldPostOfficeTearoomBradgateRd](https://www.facebook.com/OldPostOfficeTearoomBradgateRd)



As from 1<sup>st</sup> September I become Parish Clerk and Registrar for Burials. I remain your Neighbourhood Watch Co-ordinator. During the year the following have retired Lydia Knott, Ken Waterfall and Dr. Richard Lowe. More has been written elsewhere about their retirement. I am setting out below details of all our present Council. Feel free to contact the Councillor living nearest to you or contact me to pass information to them. They are all ready and willing to assist you if at all possible.

**Chair: Dr. Sue Pritchard** lives at 109 Main Street 01530 243119



**Councillor Janet Neaverson** has been serving for over 40 years and will have retired on the 22nd August. Lives at 6 Grey Crescent 01530 242911



**Councillor Holly Cross** 01509 890165.

**Councillor Rob Haylock** will be helping look after the Cemetery when the Registrar is away. He lives at 464 Bradgate Road 01530 243852



**Vice Chair Sue Colbeck** – looks after the Bob Bown Playing Field and lives at 46 Main Street 01530 242985



**Councillor Vicky Lightfoot** lives at 530 Bradgate Road 01530 242445



**Councillor Tara Pickles** lives at 272 Markfield Lane 01530 242734



Our **Parish Tree Warden** is **Brian Anderson** who lives at 53 Markfield Lane 01530 242432

**Street decoration.**

I wonder how many of you have noticed the planters on the lampposts on Bradgate Road around the park gates. This is the first year that a company has been employed to erect and water through the season. Previously



**IDC Home Maintenance**

**Painter Decorator and Property Maintenance**

**NO JOB TOO SMALL**

**From changing a light bulb to complete house re-decoration. For all the jobs you need to do but simply don't have time.**

**For a free quotation please call Ian on:**

**01530 245461 or 07885 541428**  
**3 The Nook, Markfield, Leicestershire**

**Web site: [www.idchomemaintenance.co.uk](http://www.idchomemaintenance.co.uk)**  
**Full Tradesman Liability Insurance held**

different people have battled to climb the posts and water but alas no-one is getting any younger and the previous Chair and Clerk decided to

engage Plantscape, a company from Derbyshire. What do you think? Please let us know as we weigh up whether to pay again next year.

**Sociability in the village.** A resident has asked me to remind you that to have a bonfire on a Sunday is antisocial when people are sitting out relaxing. Difficult sometimes if it has rained during the rest of the week.

**Bob Bown Memorial Field** – quotes are being obtained for a new notice board to show the rules for the field and details in an emergency. The previous one seems to have disappeared. We are considering moving the dog bag bin that is hidden in the hedge at the top of the footpath to lower down where it is more visible.

**Cemetery Extension on Groby Lane - The** tenders are not rushing in. We still have only one although I think one more is about to be submitted.

**Grass area at the bottom of Markfield Lane.** The cutting of this has proved to be highly controversial. Part of it was planted with wild flowers by the Brownies a few years back with a grant. Whether that part should be cut and if so at what time of year seems to cause a lot of discussion amongst the residents. Ex Parish Councillor Claire Costello remains our link between the Parish Council and County Hall and she has been kept quite busy in this respect. If you have any views, please let us know.

**Street Lights** a resident has queried why the street lights do not go off at midnight as in other villages. To be honest I thought they did but I do not front the street. If you have a light near you, please let me know how it behaves.



**A**  
**Casual Vacancy**  
for a Councillor has arisen.

**Further information from the**  
**Parish Clerk Pam McMorran**  
01530 242201  
[pam@riverlyn.freeserve.co.uk](mailto:pam@riverlyn.freeserve.co.uk)

✂

## Booking of Village Facilities

To book the Village Hall  
call Pat Wood on 242251.

To book the Sunday  
School Room

£10 per hour, £15 for two  
hours, £20 for 3 hours,

Call Casey Pearson on  
249259

## Foot Problems ?

Corns, Calluses, Veruccae, Hard Skin, Nail  
Problems, Athlete's foot,  
Sore and Cracked Heels.

Have them treated  
Professionally in the comfort of  
your own home

Ring **Alistair Watt** MCFHP.MAFHP.  
**Foot Health Specialist**

Tel 01530 243009  
or 07802 777221

Evenings and weekends  
available

Service with a smile -



## Contributions to Village Magazine

Can we have your contributions for the joint **October 2016** issue by  
**15th September 2016** please. Send to the Editor, **Carole Heubeck, 5  
Grey Crescent, Newtown Linford (01530 244790).**

E-mail [heubeck111@btinternet.com](mailto:heubeck111@btinternet.com)

Please could you send any emails to the above email addresses. If  
you do not receive an acknowledgement of your email - please con-  
tact Carole, the Editor direct on the above number to check we have  
received it.

The opinions expressed by the contributors are not necessarily those of  
the Editors and they reserve the right to amend, shorten or not print any  
article or advertisement submitted for publication. Whilst every effort has  
been made to ensure the accuracy of the information printed in this  
magazine, and advertisements are accepted in good faith, no liability can  
be accepted for loss, damage or claim of any kind incurred by the reader



**LIZ TUCCY**

**LIZ TUCCY WEALTH  
MANAGEMENT**



**A wealth of expertise on your doorstep**

We provide an experienced wealth management service  
and offer specialist advice in a wide range of areas including:

- Investment planning
- Retirement planning
- Inheritance Tax planning

**Tel: 01163 190958**

Mobile: 07810 798714 Email: [liz.tuccy@sjpp.co.uk](mailto:liz.tuccy@sjpp.co.uk) Website: [www.liztuccy.co.uk](http://www.liztuccy.co.uk)

3 Summerfield Drive, Anstey, Leicestershire, LE7 7QA

# Anstey & District Funeral Services

Independent Funeral Directors  
and Monumental Masons  
J.G. Wright



We can take care of every detail, advise and help you on each and every step of the way.

- *Traditional hearse & fleet*
- *Flowers arranged for you*
- *Horse drawn carriages, motorcycle hearse & alternatives available*
- *Memorial showroom*
- *Extensive car parking*
- *Private catering suite & private chapels of rest*
- *Funeral Plans available*
- *Independent, 24hr Service*



Funeral arrangements can be made in the comfort of your own home if preferred

24hr Service - 0116 234 0548  
Talbot House, Leicester Road,  
Anstey, Leicester, LE7 7AT  
[www.ansteyfunerals.com](http://www.ansteyfunerals.com)

Golden Charter  
Funeral Home

