

Newtown Linford Magazine

ISSUE NUMBER 214

CONTENTS

Church News	3, 22/23
Village Diary	4
Coffee & Cake	5
Gardening Club	7
Village Hall News	9
Pickleball	10
Boules	11
Choral Society	12 & 19
Bradgate Rotary	13, 16 & 33
Biodiversity News	15
Village Archives	17
Cricket Club	18/20
Markfield Local History Group	20
Micheal Upstone	24
Lydia Knott	25
Elizabeth Ford	29
Primary School News	30
Brownies	31
Bark In the Park	33
David Snartt News	34
National Garden Scheme	36
Neighbourhood Watch	38
Parish Council	41



May 2024

Paint Wizard

Mobile Vehicle Body Repairs

All work completed at your home
at your convenience

Call for a No Obligation Quote

07850 456696

Or email:

paintwizardthomas@gmail.com

Thomas Leason



Panel Resprays
Scratch Removal
Stone Chip Repair
Colour Restoration
Alloy Wheel Refurbishing
Machine Polishing & Glaze
Colour Code Bumper Resprays
Colour Code Wing Mirror Resprays

Consult

WALTER MILES

(Electrical Engineers) LTD

Est. 1928

For All Your Electrical Requirements

**LIGHTING, HEATING, POWER, REPAIRS, RENEWALS
AND MAINTENANCE**

Member of the Electrical Contractors' Association and N.I.C.E.I.C

Office and Works Marshall House, West Street, Glenfield, LEICESTER, LE3 8DT
Telephone 0116 287 2400 Fax 0116 287 2552
E-Mail office@waltermiles.com

Jolly Tots Playgroup

Moved to Newtown Linford Village Hall

for the winter months

Friday Mornings

9:00am - 11am



We are a friendly group of parents, grandparents, carers of babies
and children up to reception age (4years).

We have lots of fun with toys, crafts, stories and Singalong.

Hot drinks for Adults and cold drinks and snacks for Children.

All Welcome.

For more information or if you would like to help in any way -
please contact Ann 07925 919 618 or Carolyn 07896 960 676

The Bradgate

Group Parish



My daughter is in a dance show later this summer. She's been rehearsing for a while now. I have no idea if she's getting the dance moves right, but she's doing well at learning the songs she's dancing to: she's singing them over and over and over again! I wouldn't mind but one of them is the Steps line-dancing song, released in the late 90s, my mid-20s, which I had carefully forgotten all about but now is stuck in my head again. And it seems I can still remember most of the words too.

It may be because I have one of those annoying birthdays with a '0' in it this year, but I seem to be getting lots of nostalgia/sudden memories of things long gone. Memories are strange things. Sometimes they hide – we don't even know they're there until they are triggered by something and come flooding back to our consciousness – like lyrics. Sometimes they cling on, even when many other things go.

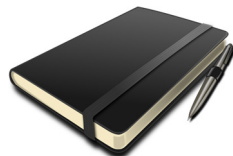
Apart from 90s line-dancing songs, the other thing which I've noticed has been remembered this month is a familiar prayer. I've visited a few people recently in end-of-life care, some who have suffered from dementia and clear memory loss. And I've noticed that they've held on, aware or not, to the Lord's Prayer. Something learned in childhood, for some of them repeated weekly ever since, for others not used hardly at all, yet still there – familiar and able to be voiced. For many people it remains the only prayer they know by heart.

In May we join in the international prayer movement 'Thy Kingdom Come', focussed on part of this prayer. Maybe it's a good time to refresh your memory of this prayer which has shaped our understanding of our relationship with God through Jesus, and to discover again the depth of what God longs to do in us, with us and through us in his world.

Richard Trethewey

**Rector of St Peter's, Glenfield, and All Saints', Newtown Linford
0116 287 1604**

VILLAGE DIARY



May

- 1st Annual Parish Council Meeting
- 4th Bio Diversity Walk
- 12th Bark In The Park
- 21st Quiz Night—Bradgate Rotary Club

June

- 7-9th Choral Society
- 12th Parish Council Meeting

Mondays

- 9.30 Slimming & Fitness, The Linford
- 1.30 Dance Fitness for 50+ Linford
- 5.30 Brownies at "The Linford"
- 6:30 Hatha Flow Yoga at The Village Hall
- 8pm Bell Ringing at the Church

4th Tuesday of the month

Gardening Club

4th Wednesday of the month

Gentleman's Club Bradgate PH

Wednesdays

- 10am Art Club in Church
- 6.30 Bodyblast Classes Village Hall

Quiz night at The Linford 8pm start

Thursdays

11.15 Coffee Mornings Village Hall


6.15 Exercise class, The Linford

Fridays

9:30 Jolly Tots, The Village Hall
AM: Fruit and Veg stall at Cooks Farm Shop

Saturday

2nd Saturday of each month - Village Ramblers



HATHA FLOW YOGA

AN HOUR DEDICATED TO YOURSELF.
CONNECTING MIND, BODY AND BREATH.


SUITABLE FOR BEGINNERS - CLASS PASSES AVAILABLE - FREE PARKING

MONDAYS 06:30-07:30PM
NEWTOWN LINFORD VILLAGE HALL
MAIN STREET, LE6 OAE

THURSDAYS 06:30-7:30PM
BROOKVALE GROBY LEARNING CAMPUS
RATBY ROAD, LE6 0FP

GET IN TOUCH!

BOOK HERE!



INSTAGRAM: @YOGAWITHBEES_
EMAIL: YOGAWITHBEES@OUTLOOK.COM
BOOK: <https://bookwhen.com/yogawithbees>

COFFEE & CAKE ROTA May 2024

PLEASE NOTE - New for this rota is a Table set up rota for the men

May 2024

2nd Bev Griffiths, Sue Dobby, Jennette, Lalita 01509 890264; 245366;
07930 955990; 07718 701614

Tables Steve

9th Judy Rowe, Felicity Manning, Marilyn Upstone 243989; 245298;
242715

Tables Clive Rowe, Toby Manning

16th Glennis M, Mary Clarke, John Castle, Carolyn T 242897;
01163 190211; 249173

Tables John Castle, Tom Clarke, Arthur

23rd Lesley Cook/Chris A/Ann Scrine with School 245208; 242432;
481928

Tables Chris Scrine, Steve Pratt

30th Janet & David Brunton Angela & Adrian McNamee 242662;
07710 253231

Tables David Brunton, Adrian Mcnamee

June

6th Lesley Cook/Chris A/Ann Scrine with School 245208; 242432;
481928

Tables Chris Scrine, Dave Pratt

13th Jenny C, Sue Howard, Charlotte T, 245373; 07896 349977;
242959

Tables Dick Howard, John Vann, Arthur

20th Carol Ann, Jackie Brewin 243433; 243439

ON THE LAWN AT GABLE COTTAGE 32 MAIN STREET

Tables Paul Tuff

27th Maria Simms, Vicki Kerr, Lauren Ahyow 07974 085434; 07904
123603; 07816 410164

Tables David Snartt, Des Bates, Stu Wardle

Please swap with someone else if you are unable to do your duty. Pass on the hall key to the next people on duty.

An opportunity for everyone to catch up on Village news and activities and to meet your fellow neighbours

Carol Ann

Derry's Nurseries

Est 1976. Well worth a visit....

Main Steet, Cossington LE7 4UU

Tel (01509) 812815 Open daily



Serving Leicestershire and the East Midlands since 1976. We have a unique, customer focused approach and we invite you to visit us at our 11 acre site in Cossington. Whether it be compost or a shrub we stock a variety of plants for delivery or collection.



Winter Bedding...
Keeping you happy all
Winter..

Come and see our wide variety of evergreen shrubs & plants now in stock
We have a superb selection of Pots.
Decorative stone, Sleeper Beds

Wide range of
Compost & Growing
Media



Seasoned Hardwood Logs, Coal & Kindling. Supplied in nets, bulk bags or loose loads. Our Hardwood bulk bag offer—delivery within 5—8 working days.

Loyalty
Scheme
Now available

FREE DELIVERY TO LOCAL AREA
www.derrysnurseries.com

Email: hello@derrysnurseries.com

Newtown Linford Gardening Club

www.newtownlinford.org.uk/gardening-club.html

We held our first celebrity evening in March when our guest speaker was Nick Bailey. He is well known as an author and garden designer and is a regular presenter on Gardeners' World. He is extremely knowledgeable about plants and how they can be used to provide maximum colour and texture throughout the year.



The room was packed with members and visitors from other Gardening Clubs to hear his talk on how to renovate your garden. He showed us how to raise the canopy of our trees to allow in more light

and to enable us to underplant with smaller but very beautiful flowers. He also encouraged us to interplant with shrubs and herbaceous plants which were contrasting in colour, sometimes to flower at the same time and at other times to flower at different times in the season to give colour in the same area for more months of the year.

He also brought copies of his most recent book which proved very popular purchases. His final task was to draw the tickets for the raffle for prizes which proved interesting and attractive to those lucky enough to win. All that, plus a glass of wine made the evening a very successful one.

We hold our AGM in April and are again able to demonstrate to our members the healthy state of our Club with a thriving membership, a sound financial position and a programme which continues to provide a wide variety of events, with speakers of national repute, interesting places to visit and lively social events.

Further details of our Club can be found on our website, shown above, or by email at 32couling@gmail.com or by telephone on 01530 242452

Anne and David Couling

Vicky and the team
welcome all customers
to YOUR local



66 Main Street, Newtown Linford
Tel: 01530 244012
thelinford.co.uk

- ❖ Quiz Night every Wednesday, 8pm start.
- ❖ Regular entertainment – details on Facebook, Instagram, and Notice Board in the lounge.
- ❖ Room Hire available, ask at the bar for details.
- ❖ Free Wi-Fi.



**BAR SNACKS
AVAILABLE**

Reduced prices on all beers, wines &
spirits for Members. Membership
Forms are available at the bar.

Opening Times: Monday - Thursday 5pm – 11pm
Friday 4pm—11pm
Saturday 12noon–11pm. Sunday 12noon – 8pm.



01530 244012
newtownlinfordclub@gmail.com



BROUGHTONS
— LIGHTING & IRONMONGERY —



Showroom Open
Monday - Saturday 10am - 4pm

The Old Cinema Cropston Road Anstey Leicestershire LE7 7BP

0116 232 3175

www.broughtons.com sales@broughtons.com



VILLAGE HALL NEWS

Toby Manning
Chairman, Village Hall Committee
ptm@tobymanning.co.uk

King's Portrait

The Parish Council has been given a government-funded portrait of the King with the intention that it "hang in public buildings across the United Kingdom, as a visible reminder of the institutions that unite us", and we are pleased to agree that the portrait should be hung in the Village Hall. The photograph shows it being presented by Sue Pritchard, Chairman of the Parish Council, to Toby Manning, Chairman of the Village Hall Committee.



Access to the Village Hall

The Village Hall is busier than ever: partially due to the temporary closure of Village Halls in Markfield and Anstey, and partially due to the excellent marketing of Hannah, our Bookings Secretary, and we need to ensure that our customers have a good experience. Accordingly people wishing to visit the Hall are asked to check with Hannah that either the Hall is vacant or that access can be granted without unduly affecting our customers. Please do not just turn up without notice and expect to be admitted.

Card Machine

This is a reminder that we have a Card Machine to accept electronic payments – especially useful for functions involving the bar.

To book the Village Hall, please email clerk@newtownlinford.org.uk or call 01530 249945 during office hours.

Pickleball

Recently a few of us have been trialling a sport called Pickleball in the Village Hall. It's a cross between tennis and table tennis in which 2 players or 4 players hit a plastic ball with paddles over a 34" net. It's been a fantastic success and we recently took it outside to the Tennis Club where it provided a fantastic evening for all who attended.

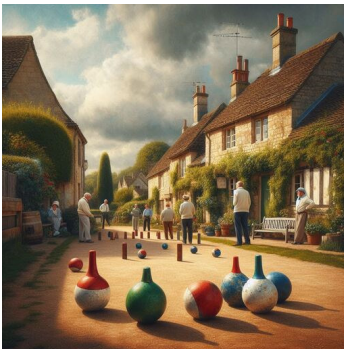
It's a great sport where single, mixed and double games can be enjoyed. 2 pickle ball courts will be available Monday evenings at the Tennis Club to continue this trial for the next 6 weeks. We have all the equipment needed, so if interested give myself, Richard or Debbie Cook a message or just pop down and have a look.

Scott Raynor
07535 365887



Newtown Linford Boules 2024

Welcome to our 22nd year!



Tuesday 14th May

Tuesday 11th June

Tuesday 16th July

Tuesday 20th August

Tuesday 17th September

Meet outside the Village Hall at 6.00pm.
All matches will be played at The Blue Bell Inn, Hoby.

KNELLER & KNELLER LTD

For All Your Electrical Requirements

- * Rewires * Extractor Fans * Wall Heaters
 - * Garden Supplies * Showers
- * Central Heating Wiring * Burglar Alarms
 - * Security Lighting * TV Points
- * Telephone Points * Emergency Lighting
 - * Wall Lights * Storage * Heaters
- * Up-Grading Electrics To Present Regulations
 - * Fire Alarms * Test & Inspections
 - * Portable Appliance Testing

All work guaranteed and complies to BS7671 Wiring Regulations.



Contact Kevin for a

FREE quotation



T: 0116 2873404

Domestic * Commercial
Industrial

M: 07836 734828

E: k.kneller@virginmedia.com

Holcliffe Ltd Est 2013

Carpentry & Joinery
Property Maintenance
Building Services

Domestic & Commercial
Timber Window / Door
Repair, Refurbishment &
Replacement
Bespoke &
Conservation Joinery

**Call James on
07908 396260
Holcliffe.co.uk**

Roy Green LETTERS
LETTING & ESTATE AGENTS EST. 1958
First Floor 15 The Maltings, Lincoln, Lincolnshire, LN2

Contact us on office@roygreen.co.uk or call (0116) 235 3009

Our Services

Fully Managed – 8% plus VAT

Let only - £525.00 plus VAT

Tenancy set up fee - £250.00 plus VAT
(only payable on New or Change of tenancies)

Members of the Royal Institute
of Chartered Surveyors

Up to date integrated property management
software

NO EXTRA CHARGES FOR

- Tenancy referencing
- Inventory of property
- Floor plan for advertisement

We have 65 years experience in property management.



Roy Green Lettings & Estate Agents



roygreenlettings



Roy Green Lettings





We are delivering care in this area now!

Can we help you
or your loved ones?

Contact our team for more
information today

leicester@blossomhomecare.co.uk

0116 431 7082

part of an award-winning care brand



50 minute minimum care visits



Hollistic care plans built around your needs & wishes



A nurse-led approach to home care



App based monitoring for loved ones



Retain your independence and autonomy



Set visit times—on time, every time

From the comfort of your home. Care Packages Available NOW!!

Newtown Linford Choral Society Summer Concert Around the World in Eighty Minutes

On another page of this Magazine you'll see a flyer for the Choral Society's Summer Concert, to be held in the Village Hall on Friday 7th, Saturday 8th, and Sunday afternoon 9th June. The title of the concert - "Around the World in Eighty Minutes" reflects the range of music to be sung by the choir in glorious four part harmony. In musical terms we will be taking a light hearted tour of the world, visiting many countries on the way including France, Italy, Africa, Vietnam, New Zealand and USA.

For the Friday and Saturday evening concerts you will have the option of bringing a picnic, or nibbles, to enjoy at 7pm, prior to the start of the concert at 8pm, and there will be a licensed bar for drinks.

Similarly, on Sunday you can if you wish bring a picnic or nibbles at 2.30 pm, prior to the 3 pm concert start time. As there will not be a licensed bar at this performance, you can, therefore, bring your own drinks and glasses.

Tickets priced at £12 for adults, and £6 for under 18s and students in full time education, are available by ringing 01530 243822. Don't delay, as tickets for the Summer Concert are always in demand

You may well ask what is Rotary?

The organisation's mission statement is to *"provide service to others, promote integrity, and advance world understanding, goodwill, and peace through the fellowship of business, professional, and community leaders"*.



Whilst that is still true, it was written in 1905. Times have moved on considerably and while the ethos still stands, its interpretation has moved with the times. Originally a male only organisation with its female support club, Inner Wheel, Rotary is now open to both genders. Some older established Clubs still have the traditional set up but we in Bradgate Rotary think differently. We

- ❖ Are a secular mixed gender club with around a 60/40 split in favour of female.
- ❖ Are informal and are more like a group of friends than a Club that meet for breakfast weekly
- ❖ Have no egos and play to individual members strengths
- ❖ Have a common interest in helping our local community whether by supporting a charity financially, painting a fence or providing advice and help
- ❖ Enjoy and have fun in whatever we do
- ❖ Put a smile on faces of all ages

Bradgate Rotary's catchment area covers Glenfield, Groby, Ratby, Markfield, Newtown Linford and Anstey.

We would welcome you with open arms should you want to be part of Bradgate Rotary. It may well be that you just wish to volunteer with us on an ad hoc basis or join a group of like-minded people who like to make a difference to others. That choice is yours. I nearly forgot our motto

Service above Self

Please contact us if you would like to know more or come along to a meeting and meet us in person.

Contact details - email us at bradgaterotary@gmail.com

or call Roy Cafferty 07817 523518 or Alan Rockey 07584 683022.

THE BRADGATE

NEWTOWN LINFORD



THE BRADGATE—COUNTRY DINING AND DRINKS

Why not book our private dining area, The Loft for your special Celebration (14-32 Guests), for private dining or a meeting. No room hire charge, if dining with us. WiFi included.

Family Pizza Deal

2 Adult & 2 Kids

Pizzas & 2 Sides

for £35

Available Tuesday—Friday
3pm-6pm

Two Pizzas for
£20
Available Mon
12 noon—3pm
and Tuesday -Fri
12noon to 6pm



ALL PIZZAS ARE AVAILABLE FOR TAKEAWAY DURING SERVICE HOURS

Tel: 01530 242239

www.thebradgate.com | contact@thebradgate.com

Wildlife Walk

The next walk is along Ulverscroft valley on Saturday 4th May. Meet outside the Village Hall at 2pm. Stout footwear recommended as it may be muddy in a few places. All welcome.



Embrace Ivy!

Ivy is not the prettiest of plants, but it plays an important role in biodiversity: it is one of the latest plants to flower, so provides one of the few sources of pollen in October and November, thus supporting our insect life. It also acts as the food plant for the caterpillar stage of the Holly Blue butterfly. A dense growth of ivy can also provide hiding, roosting, hibernating and nesting sites for small animals, insects and birds such as wrens.

It is sometimes thought that ivy can adversely affect the trees on which it grows. This is not true provided the host tree is generally healthy. Ivy uses trees for support but not for nutrition. As the Royal Horticultural Society states, "the presence of ivy on the trunk is not damaging and where it grows into the crown this is usually only because the trees are already in decline."

The R.H.S. also points out that sound brickwork is unaffected by ivy, though some control may be needed to stop it getting into gutters etc. By law, this should be undertaken outside of the nesting season. As well as providing a valuable habitat and food source, ivy can contribute to insulation, especially on north and east-facing walls.

No Mow May

Around **97%** of flower-rich meadows have been lost since the 1930's. With them is vital food needed by pollinators, like bees and butterflies. Your lawn **can help!** A healthy lawn with some long grass and wildflowers is of great benefit to wildlife. Plantlife (www.plantlife.org.uk) encourages people to give a helping hand to wild plants trying to establish themselves in gardens. All you need do is not mow your lawn during May (and perhaps beyond!). If you don't want to let your whole lawn go wild, you could consider leaving just a section of it, perhaps a corner, unmown.

Some wildflowers to look out for in May

Cuckooflower: generally starts to bloom when cuckoos start to call, hence its name, though sadly these days you're more likely to see a cuckooflower than hear a cuckoo. Cuckooflowers, also known as 'Lady's smock', grow in damp meadows and woodland rides, and are one of the food plants of orange-tip butterfly caterpillars.

Cow parsley: It fills the roadside verges with 'white froth' during May. The open flowers are a magnet for insects, including hoverflies and bees. It is fast-growing and abundant on fertile verges and can often monopolize a verge to the exclusion of other grassland wildflowers.

Dog Rose: Its white or pink-hued flowers each have five delicate petals, and the plant has prickles on its stem to help it climb. It is frequently found in hedgerows.

Bluebell: Our native bluebell appears in ancient woodlands and along woodland edges in April and May. This early flowering allows them to make the most of the sunlight that is still able to make it to the forest floor habitat, before the leaf canopy becomes too thick.

Wild Garlic (or Ramsons) is easy to identify - the garlicky smell alone can be a tell-tale sign. Otherwise, look for rounded clusters of star-like, white flowers borne on straight green stems. Its grey-green leaves are narrow, oval and pointed in shape, and grow around the base of the stem.

Wildlife gardening tip

Add a bee hotel to your garden.

For more information, try the following websites: Gardeners World:

www.gardenersworld.com or the Natural History Museum:

www.nhm.ac.uk

Newtown Linford Biodiversity

email: nlbiodiversity@gmail.com



The poster features a dark blue background with a white outline. At the top left is a white line drawing of a castle tower. To its right, the text 'Bradgate Rotary Club' is written in white. Further right is the Rotary Club logo, a yellow gear with a blue center and the words 'ROTARY CLUB' around it. The central focus is the words 'QUIZ NIGHT' in large, stylized, yellow-outlined letters with a red and white gradient fill, surrounded by a border of small yellow dots. To the right of the main text, two yellow speech bubbles contain the times '6:45pm' and '9:45pm'. To the left, a yellow speech bubble contains '£17pp'. Below the main text, the event details are listed in white and yellow text: 'Tuesday 21st May', 'The Linford', 'Newtown Linford', 'PLUS FISH & CHIPS SUPPER', 'PRIZES FOR THE WINNING TEAM', and 'RAFFLE'. At the bottom, it states 'Profits to go to local Dementia Charities' and 'Tickets from George Reynolds 07831 212384'.

Village Archive

This month, after such a deluge of rain that we have suffered over the winter, I couldn't resist a Leicester Mercury report made on 20th April 1960.

"100 acres of Bradgate were ablaze due to tinder dry bracken. The blaze, which may have been started by a picnicker's cigarette, flared up near the ruins of Lady Jane Grey's house. Helped by a stiff breeze flames were scorching through the bracken where Leicester visitors had earlier settled down for an afternoon in the sun. Smoke from the fire billowed down the hill side towards Newtown Linford where many people lined the roadway to watch the flames. Five fire appliances and firemen with beaters were soon on the way to controlling the flames. The firemen were helped by a party of Leicester schoolboys, who are on a camping holiday at Swithland, to beat out the fire. Fire crew stayed at the park

until late last night to keep a watch on the fire area.

At 3 am, firemen were called to the park

where bracken on a slope had flared up".



The quality of this photograph, taken as the firemen attempted to put out the fire, has deteriorated over the years. It is reported that the end of Spring and beginning of Summer that year were hot, and after that it was a very wet summer and autumn.

Iris Sayer

NEWTOWN LINFORD Cricket Club – THE FAMOUS OLD OAK

Newtown Linford cricket ground is one of, if not the most, picturesque grounds in Leicestershire and over the years has featured in many national publications regarding village cricket.

Part of its uniqueness was the ancient oak tree that had stood in the field of play since the boundary was extended in 1955. However, during extremely high winds one evening in early January 2002, the tree, possibly two to three hundred years old, ignominiously toppled to the ground.

For many years batsmen were attributed with four runs if the ball hit any part of the tree, even a twig. If in the process of returning the ball, a fielder did the exact same thing, four runs were added to the batting side's total. In their wisdom, the 'League' dictated that the tree was effectively not a part of the boundary but of the field of play and therefore play should continue. In my opinion, neither was the correct decision as the laws of cricket state that if the ball hits a foreign object, within the field of play, the umpire should deem it to be a dead ball.



Despite the loss of one of its unique features the ground remains the envy of visiting teams and an asset to the village, being admired by visitors from far and wide. As such, what could be more pleasant than on a sunny afternoon, visiting the ground, enjoying a cold drink and watching a competitive game of cricket?

'Before and After'

Above, the Bradgate oak which stood on the field of play since 1955 when the boundary was extended, shown in all its magnificence on a summer's day. On the right, having been blown down in the winter's gale in January 2002.

Chris Scrine



Newtown Linford Cricket Club

Hello Residents of Newtown Linford.

I'd like to introduce myself as the new Club Captain at the Cricket Club.

My name is Sam Bates and this fantastic Club has been my home ever since I was young. My childhood summers were spent here with my brothers, George and Harry, either training or watching my dad play.

Being a junior at Newtown Linford Cricket Club was the start that allowed me to progress to become a professional cricketer for Leicestershire County Cricket Club (2020-2022).

Now, becoming another Bates captain at NLCC, following in the footsteps of my grandad Des, my dad Paul and Uncle Iain is something that is very special and makes me feel very proud.

As a Cricket Club, we have grown over the years with a number of senior and junior teams and following all the work that is put into our beautiful ground by many people including the Committee, players and volunteers. We would love to welcome you to the ground during the summer.

There is something quite special about Main Street when the sun is shining, the bar is open and one of our teams are going to battle. Whether



you want to spend the afternoon enjoying the cricket or just have a quick catch up with friends in a beautiful setting, please feel free to call in.

I hope to see you over the summer!

All the best
Sam Bates

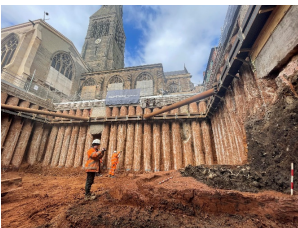


MARKFIELD LOCAL HISTORY GROUP

Tuesday 21st May 2024 7.30pm

At Markfield Methodist Church, Main Street, Markfield LE67 9UU

**LEICESTER CATHEDRAL REVEALED
A SNAPSHOT OF LIFE OVER THE LAST 2,000 YEARS –
UNDER OUR CATHEDRAL GROUNDS**



Archaeologist Matthew Morris has been involved in both the King Richard III and Cathedral Revealed excavations.

We look forward to welcoming Matthew to talk to us about what has been found, what people's lives may have been like and the significance of the finds.

Adults £3 for visitors or become a member for £8 per year (Jan-Jan) and then no additional charge for talks/activities.

www.markfieldhistory.org – FB Bygone Markfield

25th Anniversary Year

NEWTOWN LINFORD CHORAL SOCIETY

AROUND THE WORLD IN 80 MINUTES

AFRICA

NEW YORK NEW YORK

POKAREKARE ANA

AROUND THE WORLD

SOUS LE CIEL

SOGNO DI VOLARE

COMING HOME

WONDERFUL WORLD

Musical Director: Sue Ford

Accompanist: Sam Giles

7.30pm Friday 7th & Saturday 8th June

Optional: Bring a picnic/nibbles for 7pm (no drinks).

Matinee: 3pm Sunday 9th June

Picnic/nibbles & drinks (own glasses) for 2.30pm

Village Hall, Newtown Linford

Tickets: £12 (£6 U18/students)



01530 243822

Licensed Bar Fri/Sat ONLY Registered Charity No. 1079843

SUNDAY SERVICES May 2024



DATE	GLENFIELD	NEWTOWN
5 May Sixth Sunday of Easter	8.30am Holy Communion	
	9.30am Breakfast Church	10am Holy Communion <i>John Woolmer</i>
12 May Seventh Sunday of Easter	10am APCM	10am Morning Prayer <i>John Woolmer</i>
	6pm Holy Communion	
19 May Pentecost	10am Holy Communion	10am Holy Communion <i>Luke Dobson</i>
26 May Trinity	10am Holy Communion	11am Yeomanry Service <i>Richard Trethewey</i>
	4pm Crumpet Church	

Midweek Holy Communion

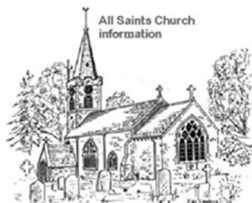
Glenfield	10.30am, Wednesday 1st, 15th, 22nd & 29th May 10.30am Ascension Day, Thursday 9th May
-----------	--

Online Services

<https://www.facebook.com/allsaintsnewtownlinford/live>

<https://www.facebook.com/stpetersglenfield/live>

CHURCH REGISTERS



Weddings

None

Baptisms

None

Funerals

19th March ~ Michael Upstone

27th March ~ Joan Healey



We extend our sympathy and prayers to the family and friends, and pray that they may find peace through faith in Jesus Christ our Lord.

Church Contact Details

Revd Richard Trethewey
(Rector) 0116 287 1604
richard@allsaintsnewtownlinford.org.uk

Hayley Moore (Church Administrator)
0116 239 3768

office@bradgatechurches.org.uk
www.allsaintsnewtownlinford.org.uk

Church Warden: Michele Petty, m.petty@ulverscroft.co.uk,

Regular Events - Bell ringer's practice: Monday 8pm

Website: www.allsaintsnewtownlinford.org.uk

Church Flowers

During the year, and especially for Church festivals, a willing band of ladies keep the Church bedecked with lovely flowers.

If you would like to give, donations can be handed to Sue Howard, 94a Main Street or Judy Rowe, 58a Main Street or if you prefer donations can be placed (in an envelope marked Flowers) in the collection plate at Church.

If anyone is interested in joining the flower arranging team, you would be very welcome! Please contact Judy Rowe on 07803 045510.

Michael Upstone

Marilyn Upstone would like to thank everyone for their support following Michael's sudden death from a brain haemorrhage on 3rd March. I am so grateful for all the sympathy cards received and for the loving care shown to me by so many people. As you can imagine, his death was so very unexpected, and is still very difficult to come to terms with.

Michael graduated in Civil Engineering from the University of Bristol

and began his career designing bridges. He became a Fellow of the Institute of Civil Engineers, and almost by accident then spent his working life in the water industry. He ended his career as Director of Operations for Severn Trent and, among many other duties, helped organise the Visitor Centres which were set up in order to give customers an insight into the work their water bills paid for. The photograph is one I took of him last year by the plaque commemorating the late Queen's opening of Carsington Reservoir, where he and Rosemarie were introduced to her.

Michael and Rosemarie moved to Newtown Linford in 1979 and became active members of the village community. Michael was Chair of the Village Hall Committee and worked on the Village Appraisal, as a result of which the Village Magazine became what it is today. He was a committed church goer and was honoured to be chosen to receive Maundy money from the late Queen at a ceremony at Leicester Cathedral in 2017. Hopefully, what he was given then will soon be on display in All Saints Church in his memory.

Michael nursed Rosemarie throughout her final illness until her death early in 2020. We had met each other through the Church as well as



walking after the first phase of Covid and were married in May 2021. We had some exciting holidays together and more were planned, which I have just sadly been cancelling. As his son Richard said at his funeral service, he was a friend to many and a wonderful husband to me. I am grateful that he brought me to Newtown Linford and really appreciate all the support that I have received.

I would also like to thank everyone in the Village for the large number of sympathy cards I received following Michael's sudden death.

Best wishes

Marilyn Upstone

Lydia Knott – A Life

As you will all know, our mother, Lydia, was the most engaging, energetic, positive and resilient woman. And beautiful too.

Born in 1937 in Nurnberg, Germany, she was the only child of her young parents Helene and Robert. Robert was sent off to war when Lydia was just 2 years old, and he was killed in the Soviet Union in Jan 1944. The telegram announcing her father's death arrived on Lydia's 7th birthday. Their homes having been bombed out numerous times in Nurnberg, Lydia was also sent by her mother to the safety of the countryside to live on her grandparents' farm which she often told us was a hard life for a 5 year old and left her with a lifelong dislike of farms, but lifelong love of salami.

Lydia learnt English by watching Hollywood movies and listening to American Forces Radio, the Americans being based in Nurnberg after the war. She came to live in England and arrived in Newtown Linford when she was 17. She and our father John Knott moved into 34 Groby Lane in 1954, her home for the next 70 years.

Having completed a secretarial and business course, Lydia became the PA to the Managing Director of Airbourne Shoes in Anstey. She loved her job which involved travelling to the fashion capitals of Europe which we know about from the postcards she sent to her mother from Lisbon, Milan and Rome amongst others.

Lydia and John loved a party and there are many marvellous photos in her collection of the Village Hall New Year's Eve fancy dress party. Other 1950s and 60s village legends in the photos included Billie Rigg and Alan Brown to name but two.

Lydia and John started a family in 1963 when Helen was born and in 1965 Peter. Lydia took the children to playgroups and the family was a



Cooks Farm Shop & Country Supplies



For all your Animal, Pet & Bird Feed



Did you know that we sell:

Equestrian Supplies - Pet Food & Supplies

Timber, Fencing & Gates - Electric Fencing

Bird Food including Mixes & Straights

Pigeon Food & Supplies - Fish Food

Point of Lay Hens & Poultry Food - Coal & Logs



Visit our Website: www.cooksfarmshop.co.uk

Markfield Lane, Newtown Linford LE6 OAB

Opening Times: Monday - CLOSED

Tuesday to Saturday 9am - 5pm Sunday 10am to 1pm

Telephone 01530 242214



real part of village life. Lydia met her lifelong friend Janet Green at the playgroup. Lydia always got involved in helping, first by joining the PTA when her children went to the Village School, and later was a School Governor at the Village School and Groby Secondary School when it opened. She volunteered to deliver meals on wheels for many years.

In 1967, Lydia took on the role of Clerk to the Newtown Linford Parish Council. It had been sold to her as something that would take just a couple of hours a week...

As you will know, Lydia worked tirelessly for the benefit of Newtown Linford and her contribution for the next nearly 50 years was immense. The family recall her dedication to any caller at any time of day. Many was the Sunday lunch interrupted by someone reporting a street light was out, a traffic blockage, raising a planning query, or wanting a grave in the cemetery as she was also the Registrar of burials. Her diplomacy and grace were instrumental in negotiating disputed planning matters, liaising with the Police, the Park, the County and District Council, all for the benefit of Newtown Linford. She retired when she was 79 in 2016 having had the invaluable support of her good friend and Parish Council colleague Pam McMorran, with her clerking duties in the last year or two of her tenure. Her time at the Parish Council led to many friend-

ships, too numerous to mention them all, but David and Joan Snartt and Ken and Kath Waterfall particularly come to mind.

Lydia and John led a lively life with a great love of socialising. Their Boxing Day parties were a fixed feature of the calendar and they laughed a lot. They absolutely loved their wonderful garden and spent hours on hours caring for it. They encouraged their children to do whatever they wished and to be the best. When John died 30 years ago in 1994, he and Lydia had been together for 40 years.

Lydia's family grew when Helen married Richard in 1984 and Peter married Mel in 2000. Lydia loved her son in law and daughter in law deeply.

Lydia always had a great thirst for knowledge and learning. She was an avid reader. She had an encyclopaedic knowledge of films and film stars which all started with those American movies in the 1940s. She took a psychology degree with the Open University. She spoke fluent German of course and flawless English, and also spoke good Spanish and Italian. She learnt French under the tutelage of her dear friend Liz Reardon which came in very useful with the Bradgate Twinning Association. Her support for the twinning along with her partner Chris Taylor was tremendous. She and Chris hosted many events at 34 Groby Lane, and she even gave over part of her garden for the petanque court. Lydia and Chris spent over 20 years together until his death in 2018. Their time together

was filled with socialising and travelling.

Lydia felt blessed and said "her life felt complete" with the arrival of her loving grandchildren, Ella in 2003 and Robbie in 2005.

Lydia's resilience and



2017 Lydia Knott Parish Clerk celebrates her 80th Birthday. Seen here with her daughter Helen, partner Chris, and son Peter.

sunny optimistic outlook really came to her aid when she had a series of health issues. First, open heart surgery in 2009 when she was 72, then in 2014 the diagnosis of lung cancer which despite surgery and chemotherapy quickly spread to tumours in her brain and bones. But this is the woman Lydia was. Ever glamorous, ever positive. On her return to the ward from having 4/5ths of a lung removed she was wearing lipstick – we were told the first thing she asked the nurses in recovery was whether anyone had some she could borrow. She was asked, and gladly agreed to participate in, a trial called Tracer X. That led to her living well for a long time after her diagnosis. She also volunteered to be part of the Peace Study which involved having samples taken after her death to help with research. There was an article in the Daily Telegraph about what she was doing, and she received a great deal of encouragement and support from the Cancer Research UK Facebook community following the announcement of what she had agreed to do. She said to the reporter that she had not hesitated to volunteer and her family fully supported her wish – we can now reveal that she never actually asked us! But we have respected her wishes of course, and the samples have been taken.

Lydia's zest for life was undiminished by illness. She never complained, always smiled at the least opportunity, and dressed up to the nines every day. She enjoyed time with her friends and family, her cat Foxy, and in her garden. .

Unfortunately those brain tumours took their toll and her mobility and capacity to communicate were compromised. Although a great frustration to someone who truly loved chatting that did not stop her smiling even until the end. She had an amazing care team who looked after her round the clock and who we are so grateful to. A recent chest infection could not be recovered from, and Lydia died aged 87 on 5th April 2024 peacefully at home as she wished to, with her beloved family around her. A full life well lived.

Helen Knott and Peter Knott



GAS-SERVWELL
(Charnwood Ltd)

Service, Repairs,
Installations of all Gas Appliances,
Power Flushing, General Plumbing

12 YEAR BOILER WARRANTY

BOILERS * REPLACEMENTS
SAME DAY BREAKDOWN VISITS

Contact Rob:
07860 735066
01530 251315

Est 1984

 bobzgas@gmail.com 

Elizabeth Ford passed away peacefully on 19th March 2024 aged 97

Mum was a rock – a constant in our lives. She was kind, extremely generous, and was always happy to listen and advise. If anyone needed anything, she would go out of her way to make it happen. She was very hard-working, I have never seen anyone weed the garden so thoroughly and quickly, even at 96 she insisted on weeding our path (which is very long!).



Mum was born in 1926 in Bedworth, the third child of six in a time when life was very different. The family had no electricity. War broke out when Mum was 13, so she experienced rationing and food shortages. She left school and went to work in the Coventry Tax Office. She had vivid memories of the Coventry Blitz. A night in an Andersen shelter in the back garden with anti-aircraft guns positioned just a few hundred yards away. The noise was terrifying and deafening and experiencing the devastation of Coventry the next day was shocking.

Mum met my dad during the war. They were married in 1950 and moved to Epsom Downs which is where she developed her lifelong interest in and passion for gardens and gardening. They created out of a large building plot a beautiful, landscaped garden and repeated this feat in their second house in Salisbury.

Mum was an excellent seamstress – making curtains for anyone who needed any, and clothes. Later she took up upholstery and beautifully renovated many chairs, and stools both for herself and others – too many in fact! The house was full of lovely furniture – but with no room for anything else!

Sadly, my dad died suddenly at the age of 59 and in 1993 Mum moved to Newtown Linford to be closer to me and to be able to spend time with her three granddaughters: Steffi, Harriet and Lizzie whom she absolutely adored. Mum was very happy in the village. She worked hard in her own garden creating another masterpiece. She had amassed a load of knowledge about plants and really enjoyed day trips visiting gardens, or going to concerts with friends. She was an avid supporter of the choir. She was a wonderful mother, Grandmother and Great grandmother. We will all deeply miss her.

Newtown Linford Primary School

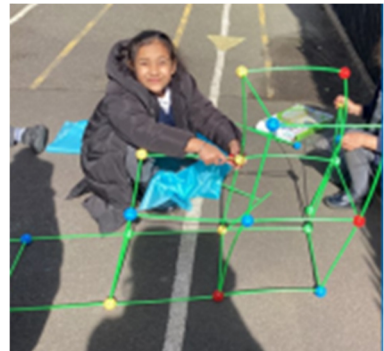
We have another very busy couple of months ahead this term. Our Gardening Club is now up and running. The beds have all been weeded and the children have been planning what they would like to plant. They are aiming for vegetables they can grow and then eat and have already planted some onions, garlic and our rhubarb is growing well. We would like to say a huge thank you to an anonymous donor in the village who has donated £100 to the School's gardening project. It will be used to get more compost, seeds that the children have chosen and a watering system to help keep our vegetables growing well. Thank you, this will make a huge difference.



In May children and staff will be completing a sponsored colour dash to raise money for Leicester Children's Holidays. This is a charity dedicated to the happiness and wellbeing of children. They have supported children in our School already and do great work in the community.

We have been working hard to ensure our children enjoy lunchtimes and learn lots of new skills while they are having fun. We are running activities where children have opportunities to be sporty, creative or have to work in a team. Here is a fantastic photos taken at Construction Club last week.

Our children continue to love taking part in Forest School. Thank you to the rangers at Bradgate Park. What an amazing opportunity to be able to use such fantastic facilities so close to our School. We also have children going on a variety of trips, from going back in time to the Victorian days at Beaumanor Hall to being avid Richard Attenborough fans at the Botanical Gardens



Newtown Linford Brownies

One day we made Easter bonnets. There was two different colours that we could choose. Blue was bigger than the yellow one. I choose blue as it was my favourite colour. We had 5 decorations to use.



They were stickers, pom poms , plastic eggs , googly eyes and pipe cleaners . Everybody enjoyed making there Easter bonnets and we got to take them home with a Malteser Easter egg .

After the Easter holiday we went to Malcolm's farm in the Village. We all had to wear old clothes and wellies. We saw cows and sheep with their baby lambs. At first we saw a 2 week old cow. After we saw a lamb being born! It was really special and needed help. It looked a bit wet, the big sheep nudged the lamb and in a few minutes it was walking. My favourite part was holding a baby lamb.



My favourite night is Mondays because its Brownies .

On behalf of all the Brownies we would like to say a huge thank you to Samuel Brewin for taking the time to have us on his farm and show us his lambs it was a lovely day for all involved.



Ivy Young age 7



See page 39 for another photo of the Brownies dance night—article was in last month

Bark in the Park

Sunday 12th May
10-4pm

With Thanks to our Sponsors

Bradgate Rotary Club

BURNS NATURAL FOOD FOR PETS

f @BradgateRotary
www.bradgaterotaryclub.org

Classes for the Dog Show

- Puppy up to 12 months
- Best Pure Breed
- Best Cross Breed
- Dog in Best Condition
- Prettiest Bitch
- Handsomest Dog
- Best Rescue / Re-homed Dog or Bitch
- Best in Show
- Reserve Best in Show

**ENTRIES BY 12 NOON – JUDGING
COMMENCES 1PM
£2 per class or 3 for £5**

Classes will be judged by Nuneaton Dog Training Club
Best in Show Judge – Gloria Bonnell
Rosettes and Prizes in each class to 3rd place
Rosette and Prize to Best in Show and Best Reserve in Show

**Information from David Snartt.
Borough Councillor for Forest Bradgate.**

Former Grey Lady Restaurant Site.

A new planning application has been received by Charnwood Borough Council for the former Grey Lady Restaurant site. This proposes the retrospective demolition of the existing dwelling and outbuildings and erection of a two storey detached replacement dwelling, including modifications to site access.

You may recall that a new application was necessary due to the failure to successfully discharge the pre-demolition conditions in time, when granting planning permission for the previous application. Therefore, the applicants had to submit a new, full, planning application in order to regularise works and obtain a lawful planning permission for the site. The new application is out for public consultation. I note some interesting comments already received, especially about ecology/biodiversity. These can be viewed on the Council's website under planning application number P/24/0197/2.

Local Plan Update.

Following the completion of the Local Plan hearings in February, Charnwood Borough Council has received a letter from the Planning Inspectors which confirms the key actions from the February hearings sessions. Once these actions have been completed, the examination can move forward to the consultation on the main modifications. This stage in the process means that the Inspectors are broadly saying the Local Plan can be adopted, subject to some changes (main modifications) being made.

Dates for the main modifications consultation have yet to be confirmed. Once this happens the Council can move towards adopting the Local Plan later this year. Once the Charnwood Local Plan is

**E.W. Goddard
& Sons**
(Established 1970)

QUALIFIED PLUMBERS
Bathroom and Tiling
Specialists

All Building Work
and Renovation

305 Markfield Lane
Markfield LE67 9PR

Telephone
01530 245316 or 0116 2311672
07961 319908 or 07961 319907

adopted it strengthens the position of the Council when deciding speculative planning applications. The letter from the Inspectors can be viewed on the Council's website. Charnwood Local Plan 2021-37 Examination (examination latest news).

Golden Anniversary.

The Borough of Charnwood is celebrating its 50th anniversary in 2024. The Borough was created on 1st April 1974 under the Local Government Act 1972 when three former districts - Barrow Upon Soar Rural District, Loughborough Municipal Borough and Shepshed Urban District – were all abolished. Charnwood was formed and Charnwood Borough Council followed soon after.

To celebrate its golden anniversary, the Council will be highlighting everything that is great about the Borough, including its landmarks, open spaces, businesses and its people. The Council will also be looking back on the past 50 years and asking people from Charnwood and beyond to take part in the celebrations by sharing their favourite memories, moments or places about Charnwood. Alongside the Council's celebrations, Loughborough Library will be hosting their 50th anniversary exhibition 1974-2024 from 9th May until 27th July 2024.

For more information on how to get involved, sending your photos and videos, please visit www.charnwood.gov.uk/pages/cbc50.

MARTIN ALLEN

**FLOORING &
FRENCH
POLISHING**

**YOUR LOCAL
FLOORING SPECIALIST.**

All timber floors laid

**All existing timber floors sanded
and refinished**

Any colour or finish

Free quotations - Call Martin.

0116 2165107

martin@martinallen.co.uk

Booking of Newtown Village Hall

To book the Village Hall

Contact Hannah Shaw,
Parish Council Clerk



Leicestershire National Garden Scheme Open Gardens May 2024

May is a busy month with 16 gardens opening all over the county.

Our first May garden to open on Sunday 5th 2-5pm is **Burrough Hall**, near Melton Mowbray LE14 2QZ. A large mature garden surrounding a classic hunting lodge, this garden develops more each year. The garden enjoys magnificent views across High Leicestershire and includes a small collection of vintage and classic cars.

On Sunday 12th May 11-4.30pm we have 5 gardens opening together at **Carlton**, CV13 0EZ. One ticket price covers entry to all gardens. These are lovely spring gardens with collections of Alliums, Tulips and forget-me-nots in amongst shrubs and spring blossom. Two of the gardens have vegetable plots, one garden has a woodland area with bluebells, and another garden is focussed on wild-life. In all of the gardens there will be collections of pots full of spring flowers.



Lots to see and many different gardening styles. There will be refreshments in the nearby Church and a plant sale. The gardens opening in **Carlton** are:

Garden at 64 Main Street

Home Farm House CV13 0BZ, **Woodmill** CV13 0BU, **Bumble Cot** CV13 0BY, **64 Main Street** CV13 0EZ and **Penwood Cottage** CV13 0EZ. All the gardens are on or close to 64 Main Street.

Over the weekend of 18th and 19th May we have six gardens opening. **Hedgehog Hall** at **Tilton on the Hill** LE7 9DE opens Saturday 18th and Sunday 19th 11-4pm. There is a Lavender walk, herb border, a colour themed long border and serpentine island bed planted with perennials. More plants are displayed on the terraced part of the garden and in a walled courtyard with a collection of hosta, acers, ferns, wisteria and

climbing hydrangea.

Also open both days (Sat) 12-4pm and (Sun) 12-3pm is **8 Hinckley Road, Stoke Golding**, CV13 6DU. This is a small south facing garden with water features and some unusual perennials and climbers, with shrubs and various seating areas. There will be a plant sale offering many garden perennials.

The New Barn, Newbold Road, Desford, LE9 9GS also opens Saturday 18th and Sunday 19th 11-4pm. A large, sloping garden of $\frac{3}{4}$ acre with wonderful views. This is a plant lover's garden which includes the national (plant heritage) collection of Geranium Phaeum, of over 60 cultivars with many included in the plant sale. There is also a large collection of Benton Irises and many other unusual plants

Opening from 1pm to 5pm on Sunday 19th is **1 The Dairy, Swadlincote**, DE12 8DU. A Japanese themed garden which includes a large Japanese Koi Carp pond, goldfish pond and a stream. The planting has a Japanese connection viewed from winding paths and planted with over 100 rhododendrons, camellias, azaleas and acers.

On Sunday 19th 10.30 -5pm **Goadby Marwood Hall** and the **Old Rectory at Goadby Marwood** near Melton Mowbray LE14 4LN are opening together. One ticket price covers both gardens and there is so much to see. **Goadby Hall** has a chain of 5 lakes covering 10 acres with lakeside walks and wildflowers. **The Old Rectory** has a beautiful walled garden, a courtyard garden, and a coach house walk recently designed by Bunny Guinness. Both gardens will have impressive displays of Wisteria, Allium, flowering shrubs, bluebells, forget-me-nots and Rhododendrons. Refreshments will be available in the 17th century Village Hall.

On the bank holiday weekend we have three gardens opening starting with **Westview Great Glen** LE8 9EH on 25th & 27th 11-4pm. Wisteria, blossom and Lilac will provide scented blooms together with Cornus kousa. Colourful borders will display Allium, Clematis, Geum, bearded Iris and many early summer perennials.

On Sunday 26th **Westbrooke House near Market Harborough**, LE16 8AX opens 10-4.30pm. A large garden which has multi coloured perennial borders around the main lawn planted with oranges, yellows and reds, leading to the woodland path. There is a walled garden with herbaceous planting, a kitchen garden and a courtyard with a collection of over 270 miniature and very small hosta.

Thanks to the generosity of our garden owners and visitors the National Garden Scheme donated a record of £3,403,960 to some of the UK best-loved nursing and health charities, which included £76,000 raised by Leicestershire.



Newtown Linford Neighbourhood Watch - A member of the Parish Council



Sadly, a resident reported their garage had been broken into overnight on the 11th/12th April and substantial damage was caused upon gaining entry. Power tools were also stolen. Please ensure your garages, sheds and outbuildings are secured. In this case, the garage had security measures in place to prevent forced entry but the culprits had seemingly come prepared with tools.

Message received from PC Greg Moore via Neighbourhood Link:

Speeding surveys in Cropston, Thurcaston and Newtown Linford

“We undertook some covert speed surveys yesterday, some of the results were disappointing to say the least. These are all residential areas with 30mph speed limits -

Leicester Road, Thurcaston (Fastest speed recorded 41 mph)

30 mph and under – 75%

31-35 mph – 19%

36-40 mph – 5%

41 mph and over – 1%

Station Road, Cropston (Fastest speed recorded 45 mph)

30 mph and under – 22%

31-35 mph – 53%

36-40 mph – 17%

41 mph and over – 8%

Markfield Lane, Newtown Linford (Fastest speed recorded 50mph)

30 mph and under – 7%

31-35 mph – 39%

36 – 40 mph – 37%

41mph and over – 17%

I think the above figures say it all really. Unsurprisingly, if we're in a brightly coloured marked police vehicle and wearing yellow jackets, speeding motorists will see us and slow down and sometimes flash their headlights at other oncoming drivers to let them know we're there as well. If we're not noticeable then we can get an accurate picture of how severe a speeding issue may or may not be. We can then send this accurate data to the Leicester, Leicestershire and Rutland Road Safety Partnership. They can then assist with potential enforcement at a site if it's deemed necessary and can do a more thorough job at this than we can. Their more thorough work can then potentially assist with adding things such as traffic calming, speed limit variations, speed cameras, etc.

if these are deemed necessary.”

PC 330 Greg Moore and PCSO
6093 Mitch Jarvis

Additionally, I have made contact
with LCC Highways to ask for:

- a) their advice and guidance
with regards to our current
provision on VAS units and
possible new locations.
- b) costings for Average Speed
Cameras, so Newtown Lin-
ford Parish Council can be
better prepared for any fu-
ture funding opportunities,
such as Section 106 agree-
ments, which may arise.

Keep ‘em peeled.

Best wishes,

Hannah Shaw,

Parish Council Clerk,

Tel: 01530 249945

Email:

clerk@newtownlinford.org.uk

Problems With Your Feet?

Home Visits & Cropston Surgery

- ∞ Ingrowing Toenails
- ∞ Fungal
- ∞ Corns
- ∞ Callous
- ∞ Verrucae

Johanna Partridge MCFHP MAFHP
Foot Health Practitioner
CALL 0116 235 1971
Or 0788 781 7370

Registered Member of the British
Association of Foot Health Professionals



KEITH SMITH (ANSTEY) LTD



6 STADON ROAD ANSTEY LE7 7AY - TEL: 0116 2362395 - sales@keithsmithltd.co.uk

FAST FREE LOCAL DELIVERY



BEKO EDC634S

- 60cm electric cooker
- ✓ Double oven
 - ✓ Ceramic hob
 - ✓ Enamel lining
 - ✓ **1yr Guarantee**
 - ✓ 69 litres main oven



Now Only **£469.99**



SONY

KD32W800P1U

- 32" HD SMART TV
- ✓ HD READY DISPLAY
 - ✓ FREEVIEW PLAY
 - ✓ GOOGLE ASSISTANT
 - ✓ 3 HDMI PORTS
 - ✓ CATCH UP TV



Now Only **£349.00**



Blomberg LWF174310W

- Washing Machine
- ✓ **1400rpm** Spin Speed
 - ✓ **7Kg** Load Capacity
 - ✓ 28 Min Fast Full Load
 - ✓ 16 Programmes
 - ✓ D Rated



Now Only **£379.99**



BOSCH

KGN27NLEAG

- ✓ 55cm Fridge-freezer
- ✓ Frost-free
- ✓ **50/50**
- ✓ **255l** total capacity
- ✓ 2 year warranty



Now Only **£469.00**



BEKO CIFY81X

- Built-In Single Oven
- ✓ 5 Functions
 - ✓ 66 Ltr Oven
 - ✓ Fan Assisted
 - ✓ Stainless Steel
 - ✓ A Rated



Now Only **£239.99**



BOSCH

SMS2ITW08G

- DISHWASHER
- ✓ 12 PLACE SETTINGS
 - ✓ **DELAY START**
 - ✓ **ECO WASH**
 - ✓ **5yr Guarantee**



Now Only **£399.00**

Fitted Kitchens

We are pleased to announce that we are now agents for A.W.E Kitchens and Bedrooms Who specialise in Bespoke made to measure kitchen & bedroom furniture

Please call in for further details

FREE DELIVERY

with
Personal Service

“Ask About our Same Day/Next Day Installation and Removal Service”



News from Newtown Linford Parish Council

Have you looked at the website recently?

www.newtownlinford.org.uk



Greetings!

I am very pleased to tell you that Newtown Linford Parish Council has been awarded an Official Portrait of His Majesty King Charles III which was presented to the Village Hall Committee at their meeting in April for display. Watch out for the King's Portrait when you next visit the Village Hall. It's magnificent!

As mentioned in my Neighbourhood Watch article, I have made contact with LCC Highways regarding the worsening speeding problem around the Parish. Bradgate Road, Main Street and Markfield Lane have all been noted as speeding hotspots and the Parish Council are considering what action can be taken to address the problem.

To date, we have requested costings for Average Speed Cameras, so we can be better prepared should any funding opportunities arise, such as Section 106 agreements. Certainly, the Parish Council does not have sufficient reserves to fund Average Speed Cameras at this time, nor is there the necessary data to suggest that cameras should be installed by the responsible authority (LCC Highways).

However, the Parish Council can review our current provision of VAS units in liaison with Highways and we await a response following initial enquiries.

On with more news....

Bob Bown Memorial Field

I have received comments regarding the areas immediately in front of the football goals at the Bob Bown Memorial Field and acknowledge they are very water logged and muddy still after all the wet weather. Our Grounds Maintenance contractor, Michael, has assessed the situation and has suggested an artificial covering or matting in the areas of the goals, however, we would also need to address any possible drainage concerns and this will be discussed at the Annual Parish Council Meeting in May. Watch this space.

Cemetery and Churchyard

At the May Parish Council Meeting, Councillors will be reviewing the current Cemetery fees. It has been three years since the fees were last

reviewed and due to inflationary pressures to maintenance costs, it is likely the fees will increase.

If you would like further details regarding earthen and ash plot availability and prices, please contact me at the email address below and get in early to avoid any possible increases from June 2024.

Best wishes,
Hannah Shaw
Parish Council Clerk
Tel: 01530 249945
Email:
clerk@newtownlinford.org.uk

Parish Council Annual Meeting,
Wednesday 1st May @19:15
Parish Council Meeting,
Wednesday 12th June at 19:15

How to contact the Police

All incidents are to be reported to the Police and **by calling 101**

They will then assess the situation and deal with the situation as they see fit. This may involve a vehicle from another area. If you wish, also advise our NHW coordinator who will circulate if appropriate.

An alternative way is to go online to report an incident

<https://www.police.uk/pu/contact-the-police/report-a-crime-incident/>

This may be easier if the phone call is not urgent. 101 calls are not free.

Contributions to Village Magazine

Can we have your contributions for the **June 2024** issue by **15th May 2024** please.

**Send to the Editor, Carole Heubeck,
5 Grey Crescent, Newtown Linford (01530 244790).
E-mail newtownvillagemagazine@outlook.com &
heubecks@gmail.com**

Please could you send any emails to the above email addresses. If you do not receive an acknowledgement of your email from the gmail account within 3/4 days - please contact Carole, the Editor direct on the above number to check we have received it. The village email is not checked so frequently but I don't lose articles from there!

The opinions expressed by the contributors are not necessarily those of the Editors and they reserve the right to amend, shorten or not print any article or advertisement submitted for publication. Whilst every effort has been made to ensure the accuracy of the information printed in this magazine, and advertisements are accepted in good faith, no liability can be accepted for loss, damage or claim of any kind incurred by the reader.

COVERING *Martin Page* YOUR LOCAL

The Newtown Linford Area

Tree Surgeon



charnwood

Have you considered your trees may need some maintenance from time to time. Are your trees maybe too tall blocking light, unsafe or untidy?

Or maybe you need to remove that stubborn stump.

Do your hedges, Conifers or shrubs need trimming.

With 30 years of experience working with trees in your area, I would be pleased to offer you free advise and a free quotation.



I also sell high quality firewood logs

call me now on

01530 251312

Constantly Recommended



- Fully Insured
- Local family business
- Clear & tidy service



PEST CONTROL

DOMESTIC • COMMERCIAL • INDUSTRIAL



Which?
Trusted trader



**Guaranteed Service
No Add On Charges**

**Wasps * Fleas * Ants * Rodents * Bird
Control * Fly Killers * Fly Screens *
Clinical & Sanitary Waste Disposal**

FOR A FAST, RELIABLE RESPONSE

CALL FREE ON

0116 234 0078

ensuring a pest free environment

www.targetpestcontrol.co.uk | Info@targetpestcontrol.co.uk

© 2008 Target

Anstey & District

Est. 1992 Independent Funeral Services

0116 234 0548

We can take care of every detail, advise and help you on each and every step of the way.

- Qualified Funeral Directors
- Floral Tributes arranged
- Hearse, Limousines and alternatives available
- Monumental Service
- Car parking available
- Online tribute and donation profile
- Catering suite
- Chapels of rest
- Funeral plans available
- 24 hour service



Funeral arrangements can be made in the comfort of your own home if preferred.



Golden Charter
Funeral Planning for Life Ltd.

Talbot House, Leicester Road, Anstey, Leicester, Leicestershire LE7 7AT
Email: talbotthouse@ansteyfunerals.com Website: www.ansteyfunerals.com