

Newtown Linford Magazine

ISSUE NUMBER 138

CONTENTS

Church News	3, 20/21
Coffee & Cake	4
Appeal from the Park	4
Tennis Club	8
Retirement	11
Bradgate Park	13
Gardening Club	14
Scarecrow Festival	17/18 & 27-29
From the Records	24
Boules	31
Brownies	34
Neighbourhood Watch	32
Parish Council	36



October 2016



David Allen
For Your
VERMIN CONTROL



RATS, MICE, MOLES, RABBITS, WASPS, ANTS, WOODWORM.

**DO YOU HAVE A PROBLEM WITH ANY OF THESE?
LET ME SOLVE IT FOR YOU!**

10 ASIIBY ROAD, SHEPSHED, LE12 9BS
Telephone: 01509 502664

24 HOUR SERVICE

Consult

WALTER MILES

(Electrical Engineers) LTD

Est. 1928

For All Your Electrical Requirements

**LIGHTING, HEATING, POWER, REPAIRS, RENEWALS
AND MAINTENANCE**

Member of the Electrical Contractors' Association and N.I.C.E.I.C

Office and Works Marshall House, West Street, Glenfield, LEICESTER, LE3 8DT
Telephone 0116 287 2400 Fax 0116 287 252
E-Mail office@waltermiles.co.uk

Horseshoe Cottage Farm

Luxury bed and breakfast accommodation



Approved Working with the
Police and Fire Service and
Dishley Green Accommodation
of the year
for 2011 and 2012

Free bus service to the
Auntie's Christmas Service &
available to all in the
East of England



Rosecliffe Road, Hallgates, Cropston, Leicestershire LE7 7HQ

Tel: + 44(0)116 2350038

Email: linaljee@horseshoecottagefarm.com Website: www.horseshoecottagefarm.com



Friendships matter

I got married in January this year. At about the same time, the eldest daughter of some of my old school friends turned 18. Which just goes to show how late I was to the marriage party (I'm 42, by the way).

Wonderful as it is, and it really is, I don't want to dwell on being married now, but on something I realised while I was still single: how many singles there are out there. There are the obvious ones: young or youngish adults, not partnered up. But then there are others: those later in life who have never married, who have separated or been divorced, those who are widowed. Some single by choice, many not. Does that mean they're not in relationships? Often we speak single people that way. But it's not true. All of us have opportunity to develop a form of relationship the value of which is too frequently overlooked. Friendship.

Friends are vital for all of us. It is with our friends that we are able to be honest, to share the things that affect us practically or emotionally, to help shape our opinions – for some of us 'extrovert thinkers', to discover what we think! Friends give us a sense of security, that sense of relief as we sit down over a coffee or pint and think 'yes, now I can talk about it with someone who'll listen'. Friends help us see the things we've missed, help us knock rough edges off, they're the ones whose presence makes happy occasions even happier. Even if married, we still need other people to talk to, a group to belong to.

Jesus, God's example of a life lived well, never married, nor had children (despite what Dan Brown might say) but he did have friends, and he relied on them as they did on him. They spent life together, enjoyed rest together, talked together. In John's gospel he says, 'I have called you friends'. Whatever the status of our other relationships, Jesus offers friendship to all who turn to him and, despite now being married, it's still a relationship I rely on every day.

Richard

VILLAGE DIARY

October

24th Parish Council
27th Gardening Demonstration with Ady Damon
28th Information Event RRC (see centre pages)

Regular events

Monday afternoon	Mature Movers fitness class V. Hall
Mondays 8pm at the Church	Bell Ringing
4th Tuesday of the month	Gardening Club
3rd Wednesday of the month	Ladies Luncheon Club
Thursdays 11.15	Coffee Mornings for all, Village Hall
Thursdays 6.30	Brownies, Sunday School Rooms
3rd Thursday	Gentlemen's Lunch Club

Newtown Linford Parish Council Website

<http://www.newtownlinford.org.uk/>



Appeal from the Park

Do you have any old gardening tools that still have life in them, but could do with a new home? Do you work for a business that supplies garden tools and could you help us out?

The Bradgate Park Conservation Volunteers are increasingly growing in size, doing a greater range of tasks including gardening and being joined by local community groups, youth groups and people of differing ages and abilities.

The team have put out a request as they could do with a larger selection of sizes and types of tools to cater for the abilities and number of participants.

Being able to offer tools that are suitable in size and weight is important for those joining events to be able to get involved in all the types of work being tackled, especially for the community and gardening tasks.

If you have any tools that you don't require, then please consider donating them for these community/volunteer tasks.

If you could help the conservation volunteers out please email rang-ers@bradgatepark.org with the title conservation volunteers and the team will liaise with you about tools, how you could help and sorting out

4 the practicalities!

Peter Tyldesley

Coffee & Cake @ Newtown Linford Village Hall

Thursday Morning 11.15am - Free

All Welcome - All Ages



Coffee and Cake Duty Rota October 2016

October

6th. Vicky Lightfoot & Amanda Scunthorpe 242445 / 0777 9123952

13th. Iris & Peter Sayer 243822

20th. Mary & Wes Raynor 243042

27th. Ruth Goddard & Anne Smith. 245316/242639

November

3rd. Lesley Cook, Chris A & Gay Redstone 242214/0116 2351625

10th Janet & David Brunton 242662

17th. Joe & Claire Costello 249613

24th. Casey Pearson & Jenny Cole. 249259

Please swap with someone else if you are unable to do your duty. Pass on the hall key to the next people on duty.

An opportunity everyone to catch up on village news and activities and to meet your fellow neighbours

Macmillan coffee morning 8th September

Thank you to everyone for supporting this worthwhile charity. You raised £280 Thank you to everyone who made cakes and gave generous donations when they could not come

Plumbing & Heating

- City & Guilds qualified
- 25 Years Experience
- All Plumbing & General Maintenance Work Undertaken
- Reasonable prices
- Free Estimates

References available from local satisfied customers.

Nick Phillips Bradgate Road, Markfield





THE BRADGATE NEWTOWN LINFORD



FAMILY PIZZA DEAL

2 Adult Pizzas, 2 Kids Pizzas
& 2 Sides

£24.95

Available Mon-Fri 4pm-7pm
Additional Adult Pizza £8.00
Additional Kids Pizzas £2.00

TWO PIZZAS FOR £16.95

Available Mon - Fri
12noon - 7pm

KIDS PIZZA PARTIES

IT'S PIZZA TIME

Supervised Pizza building and
Ice Cream Sundae making
- both part of the party meal
Unlimited cordial and pass the
parcel

Mon - Fri 4pm - 6pm
Max 12 children. £11.95 per child

PIZZA PARTY DIY

We serve the Pizzas and Ice
Cream Sundaes, you provide the
games.

Mon - Fri 4pm - 6pm and
Sat 12 noon - 5pm.
Hosted in our Private Party Area.
Max 25 children
£7.95 per child

TUESDAY IS GRILL NIGHT

2 x 10oz Gammon Steaks
& 2 Desserts **£24.00**

2 x 8oz Rump Steaks
& 2 Desserts **£28.00**

2 x 8oz Sirloin Steaks
& 2 Desserts **£32.00**

Fixed Price Menu

Two courses **£13.00**
Three Courses **£16.50**
Available Mon-Fri
12noon - 3pm

Christmas Party and Christmas Day bookings now been taken

Main Street, Newtown Linford, Leicestershire, LE6 OAE
Tel: 01530 242 239 www.thebradgate.com contact@thebradgate.com



Newtown Linford Christmas Meal

Newtown Linford Village Hall
On
Friday 9th December 6.30 for 7pm

**3 Course Meal
Licensed Bar
Entertainment**

It has been decided to have the Christmas Village Celebration in the evening this year so that all villagers are included. Please put the date in your diary there will be more information in the November issue.

If you want more information before then please contact Vicky Lightfoot
on 242445
or Pat Wood 242445



Cooks Farm Shop

Markfield Lane, Newtown Linford, Leics

LE6 0AB, 01530 242214

www.cooksfarmshop.co.uk



Compost



Your Favourite Compost Now Available Here!!!

Fencing Timber, Tree Stakes

Gates & Ironmongery

Grass Seeds for Lawns & Paddocks

Buckets – Bins – Barrows – Animal Feeds & General Small Holding Supplies

Also: Home Produced & Local Meats, Potatoes, Fruit & Veg, Eggs, Bread, etc.

Open!

Mon – Fri 9am – 5.30pm

Sat 9am – 5pm

Sun 10am – 1pm



End of Season Tennis Club Dance 9th September

A fabulous night had by all with 95 people attending. Thank you to all who supported the event. Another great village event with. The saxophonist and DJ were amazing



Tennis club mix in Sunday 11th Sept

A lovely day with beautiful blue sky! Great company and tennis. 20 players and spectators met at the courts for a mix in. Charlotte and Nathan Jackson organised the tournament with coffee/tea and homemade cake for all.

Memories of the wonderful mix in's of years gone by with children playing and the elderly watching. There were 4 generations present with Helen and Dave Clifford beating Charlotte and Nathan Jackson in the final

Coaching

Our new coach James Mendez has started the Saturday coaching sessions for children and adults

9am-10am children to age 8

10am-11am children over 8

11am-12noon adults

He is available for private lessons for those who want to work on specific things

"James taught himself tennis from the age of seven. Reaching regional

standard within the UK, he had to share his tennis with an academic path. James started coaching whilst studying Mathematics and Physics at Bath University, and quickly learned which he preferred!

James has worked at GAK, the largest academy in the Austrian region of Styria, and as the Head Coach for the 12&Under Programme of Tennis Auckland, the biggest regional federation in New Zealand. James has also been a touring coach for ITF juniors in India and in Europe. He rose to become Head Coach of his first academy in Surrey within two years, after starting his career proper at tennis camps in the US. James learned the ropes coaching at university and school.

James' career has come full circle as he is about to go back to university at Loughborough to study a Sport Psychology BSc. He is also half-way through a two-year Level 5 Performance qualification with the PTR, and he is LTA registered, DBS checked, and First Aid qualified."



COVERING *Marlin Page* **YOUR LOCAL**
The Newtown Linford Area ***Tree Surgeon***

Have you considered your trees may need some maintenance from time to time. Are your trees maybe too tall blocking light, unsafe or untidy?
 Or maybe you need to remove that stubborn stump.
 Do your hedges, Goshes or shrubs need trimming.
 With 20 years of experience working with trees in your area, I would be pleased to offer you free advice and a few quotations.

I also sell high quality firewood logs

Call me now on
01530 251312

Charmwood

- Felling trees
- Stump removal
- Hedge & shrub trimming

10

PEST CONTROL
 DOMESTIC • COMMERCIAL • INDUSTRIAL

**Guaranteed Service
 No Add On Charges**

Wasps * Fleas * Ants Rodents
 Bird Control * Fly Killers * Fly Screens *
 Pet Screens * Feminine Hygiene

**FREE 4 HOUR BELIEVE RESPONSE
 CALL FREE ON**
0116 234 0078

target
 www.targetpestcontrol.co.uk

10

Thank You to Retiring Parish Councillors and Parish Clerk.

It was a great honour for me to be asked by the Newtown Linford Parish Council to talk about the achievements of the retiring Parish Councillors and Parish Clerk at the well attended coffee morning at the Village Hall on Thursday 8th September.

Councillors Ken Waterfall, Janet Neaverson, Dick Lowe and Parish



Above - Retired Chair of the Parish Council Ken Waterfall with David



Retiring Vice Chair (and Acting Chair) of the Parish Council Janet Neaverson with David

Below: Retired Councillor and Tree Warden Dick Lowe with David

Clerk Lydia Knott all recently retired, together with over 160 years of service to the local community. This was a time to say thank you for their dedicated contribution to the wellbeing of the Parish and to give a gift in recognition of their achievements. During this time there have been many changes, but with their collective drive and enthusiasm we have today a great place to live.

Three major projects spring to



mind amongst the many challenges during their time: the Village Appraisal which, in my view, brought the community together; involvement with the village design statement which has featured in recent planning applications and finally developing and delivering the Bob Bown Play Area, which I am sure is a great benefit to all the children and young people within the Parish.

There are now some big 'shoes' to fill, but I am sure with the new Parish Councillors in place, we are in safe hands to continue the excellent work on behalf of the residents of the Parish.

David Snartt



Retiring Mrs. Lydia Knott – Clerk to the Council with David Snartt

Broughtons Traditional Lighting & Hardware Since 1858

March Lane

NEW for 2016 - Indian Lighting & English Door Furniture

Showrooms & Coffee Lounge
 Mon - Sat 9am - 5pm
 Sundays 10am - 4pm

The Old Coopers Doopatan Road Anney Leicestershire LE17 7BP
 0116 232 3175
 www.broughtons.com info@broughtons.com

From the Park



Autumn has Arrived

After a bit of an Indian Summer in September, the poet Keats' "season of mists and mellow fruitfulness" has well and truly arrived. There is a definite chill in the air in the morning and evening and, as I write this in the third week of September, there are rumblings in the undergrowth that herald the start of the deer rut.

Autumn is the time of the harvest and for reaping the reward for hard work invested in previous seasons. For us the most obvious manifestation of this was the official opening of our Visitor Centre by Sir David Attenborough on 22nd September. It was a real pleasure and privilege to be able to show Sir David around the exhibition privately before the opening ceremony and marvel at this 90-year old living legend's undimmed passion for the natural world in general and for the natural history of Charnwood Forest in particular.

We have been delighted with both the exhibition itself and how well it has gone down with our visitors. The Visitor Centre opened to the public on 1st July and on 4th September visitor number 20,000 walked through the door. Our target for the first year was that 10% of visitors to the Park should visit the Visitor Centre. We are currently attracting nearer 20%, which is very satisfying. We are hoping to be able to open for Visitor Centre for 360 days a year and to do this we need to keep growing our team of volunteers: if you can spare a couple of days a month and have a passion for the Park that you would like to share with our visitors, please contact Visitor Experience Manager Michele Smith visitor@bradgatepark.org

The approach of winter marks the arrival of both the venison season (now available – order yours for Christmas now!) and the tree work season. We have been fortunate to secure funding from Leicestershire Freemasons to develop Coronation Spinney into a Memorial Wood. Full details in a later column but, as well as smartening up a scruffy bit of woodland and replacing the unsightly chain link fence, this project will enable us to offer the opportunity to meet the demand for physical memorials to a loved one that we can no longer keep up with in the provision of memorial benches and trees.

This month's column is a bit shorter than usual. This is not because I have run out of things to write about – quite the reverse – but I have been

so busy with our various events that I have simply not had the time to sit at the computer and the Editor is chasing me with ever-increasing ferocity!

As the days shorten and we slip into our winter routine, I look forward to seeing you on the Park.

Peter Tyldesley

Newtown Linford Gardening Club

Our August trip to Felley Priory in Nottinghamshire was a great success with a full coach of members enjoying a private visit to the gardens and a lunch. Felley Priory is only just off junction 27 of the M1 and so the coach journey was less than three quarters of an hour. The gardens were lovely. There were several long borders of herbaceous plants which were in full bloom and the hydrangeas had flowers which were truly huge. There were a number of very unusual plants on show and it took well over an hour to walk round the garden to enjoy all it had to offer. We were offered a superb lunch – a cold buffet with as much to eat as we wanted. The real bonus of the day was the well-stocked nursery and our members took full advantage of it. The luggage compartment of the coach was just about full by the time all the plants had been packed in.

The opportunity to hear Fergus Garrett from Great Dixter has proved popular and all tickets have now been sold. We will have a packed hall to hear one of Britain's most charismatic gardening experts. This is the highlight of our year when we invite a celebrity gardener to come and talk to us. Fergus Garrett only does a few talks each year and we are very fortunate to be included in his itinerary.

We have welcomed a large number of new members this year and will be pleased if others want to join us. If you are interested in our activities just contact the secretary (tel. 242452 or e-mail 01530242452@talktalk.net) , or come to one of our meetings to see how you like it before making a commitment (£2 for visitors). Alternatively give us a ring and ask for a copy of our programme for the coming year and we will be pleased to send one to you.

.Anne and David Couling



Have You Heard About The Grey Lady Kitchen & Deli?



Our restaurant The Grey Lady Kitchen & Deli is a hidden highlight, loved by locals and people lucky enough to find us driving past. Our focus is good homemade food, sourced locally from our outstanding suppliers so you can be assured that all the boxes are ticked.

Opening Times

Mon—Sunday 9am-5pm

Friday Evening For Fish & Fizz 6pm-9.30pm



Beat the queue
telephone your
order on:

01530
245 801

Friday Evenings Enjoy Fish & Fizz for €12pp

Grey Lady Kitchen & Deli, 544 Bradgate Road, Newtown Linford, Leicestershire, LE6 0HB

Telephone: 01530 245 801

Email: info@thegreyladydeli.co.uk

<http://www.thegreyladydeli.co.uk/>



Have You Heard About The Grey Lady Restaurant?...

Nestled in Newtown Linford in the heart of Charnwood Forest overlooking Bradgate Park, yet less than 20 minutes from Leicester. Set in three acres with an enviable outside drinking and dining area overlooking the forest.

Fixed Price Lunch Menu

12-2pm Mon-Sat

2 Courses for €15

3 Courses €18.50



Opening Times

Mon – Sat Lunch 12pm-2pm

Mon – Sat Eve 6pm-9pm

Sunday 12pm-3.30pm

The Grey Lady, Sharpley Hill, Newtown Linford, Leicester,
LE60AH

Tel. 01530 243558

info@the-grey-lady.co.uk

<http://www.the-grey-lady.co.uk/>



For all of your legal Requirements locally

We can help you with the following services:

- Buying & Selling a Property
- Tenancy Agreements & Disputes
- Transfers of Ownership
- Re-Mortgages
- Lasting Power of Attorney
- Wills & Probate
- Accident & Injury Claims
- Debt Recovery
- Divorce & Separation

Free initial advice and a competitive quote call

0116 2364875

Florence Villa, 5 Leicester Road, Anstey, LE7 7AT

Scarecrow Festival

Can I say on behalf of the village a **big thank you** to the organisers and everyone who participated in this years Scarecrow Festival for all the hard work that you all put into this event. Whilst it is enjoyed by lots of visitors to the village, it is also enjoyed by residents. The weather always seems to be good and it is such a lovely sociable experience being able to chat to fellow villagers as we wander around our lovely village and the exhibits.

Scarecrow Winners for 2016 are

Winners are:

under 10s 'Robinson Crusoe';

Teens 'Just Keep Swimming';

Adults 'Tombstone Cowboys';

Group 'Roald Dahl Stories';

Family joint winners 'Stirley Moss' and '6'

Under 10s: 2nd was Al Capone,

3rd was Hot X Buns;

commended is Peter Rabbit and Mr McGregor

Adults: 2nd is Tokyo Here We Come; 3rd is Pokemon Crow

Group: 2nd was Sister Act; 3rd was Chef in Hot Soup;

commended Hungry Caterpillar

Family: no second as combined first; 3rd Stickman's Tree Family,

commended Newtown Linford Crowtel and Making a Scarecrow,

Harder than it Seams

People's choice: joint winners Tombstone Cowboys and Sister Act

Cake Winners (photos on next page)

Adults winner: Scarecrow Bakeoff 2016 by Kiran Haw.

Children winner: Scarecrow Delight by Rida, Sophie and Tarha Haq.



Cake

Winners

Adults winner:
Scarecrow
Bakeoff 2016
by Kiran Haw.

Children win-
ner: Scare-
crow Delight
by Rida,
Sophie and
Tarha Haq.



MARTIN ALLEN

**FLOORING &
FRENCH
POLISHING**

**YOUR LOCAL
FLOORING SPECIALIST.**

All timber floors laid

**All existing timber floors sanded
and refinished**

Any colour or finish

**Free quotations
call Martin.
0116 2165107**

SYKES JEWELLERS

**WATCH, CLOCK &
JEWELLERY REPAIRS**

**WATCH BATTERIES AND
STRAPS FITTED WHILE
YOU WAIT**

**8 BRADGATE ROAD, ANSTEY
TEL: 0116 236 2510
sykesjewellers.co.uk**



HYPNOTHERAPY

MARGARET GEE DAH Hyp

Confidential, professional and friendly help with

Stress Management Anxiety and Worry
Fears and Phobias

Relationship Issues Stop Smoking

Lack of Confidence and Self Esteem

Weight and Body Image Problems

And more.....

Charnwood House, 516 Bradgate Road
Newtown Linford, LE6 0HB

Please call for more information or to book an appointment

01530 242958

NEWTOWN LINFORD SERVICES October 2016

DATE	NEWTOWN LINFORD
2nd October	
19th Sunday after Trinity	10.30am Holy Communion (JW)
9th October	8.00am Holy Communion (RT)
20th Sunday after Trinity	10.30am Morning Prayer (JW)
16th October	
21st Sunday after Trinity	10.30am Holy Communion (RT)
23rd October	8.00am Holy Communion (HN)
Bible Sunday	10.30am Morning Prayer (HN)
30th October	
All Saints	10.30am Morning Prayer (RT)

At time of going to press, Glenfield services were not confirmed. Please contact Parish Office if you need more details

MIDWEEK COMMUNION SERVICES — October						
GLENFIELD	Wed	9.30am	5th	12th	19th	26th
NEWTOWN LINFORD	Thur	9.30am	6th			



CHURCH REGISTER **NEWTOWN LINFORD**



Weddings

September ~ Daniel John Walker & Rachael Chloe Webster
17th September ~ Matthew Greasley & Samantha Tomkins

Baptisms

None

Funerals

None

Newtown Linford Church now has its own Website - why not check it out.

www.allsaintsnewtownlinford.org.uk

Church Contact Details

Richard Trethewey

Rector of St Peter's, Glenfield, and All Saints, Newtown Linford

0116 287 1604

Email: richard@stpetersandallsaints.org.uk

Church Wardens:

Clive Rowe

Jane Woolmer

Parish Office: Bekki Williamson (9am - 11am weekdays)

0116 239 3768

Email: office@bradgateteam.org.uk

Regular Events - Bell ringer's practice: Monday 8pm

E.W. Goddard & Sons

(Established 1970)

**QUALIFIED PLUMBERS
Bathroom and Tiling
Specialists**

**All Building Work
and Renovation**

305 Markfield Lane
Markfield LE67 9PR

Telephone

**01530 245316 or 0116 2311672
07961 319908 or 07961 319907**

Peter Henton

**Domestic Appliance
Repairs**

Ex Zanussi Senior Engineer

Tel 0116 2896529

Mobile

07711 265414



**Professional carpet &
upholstery cleaning and repair
services**

- ◆ Curtains cleaned in situ
- ◆ Expert spot & stain removal
- ◆ Guaranteed 5 year anti-stain policy
- ◆ Hand finishing of swags & tails
- ◆ Mattresses deep cleaned
- ◆ Pest control, unpleasant or destructive pests removed

Telephone 0800 328 2927

www.safeclean.co.uk

**PRIVATE AND
COMMERCIAL**

INTERIOR / EXTERIOR

A.B. SHERRIFF

Established 1988

**PAINTER &
DECORATOR**

**42 BRADGATE DRIVE
WIGSTON, LEICESTER**

Telephone 0116 288 1048

Mobile: 07719 366 569



LOVE FLOWERS ? - COULD YOU HELP US?

We are so fortunate in our village to have a beautiful Church and fortunate to have volunteers who give their time to decorate our Church with flowers. We do appreciate their work and I would like to take this opportunity to say thank to all of them and to say a special thank you to Janet Neaverson. Janet has organised the flower rota for many years. I have seen in the last few months that this has not always been a straightforward task but Janet has dealt with and sorted all the problems that have arisen and made sure that we have flowers in Church each week making it welcoming for everyone who comes in. It is always a pleasure to see the wonderful and varied arrangements. **Thank you, Janet.**

As you may know already, I will be responsible for the flower rota next year. I know from Janet that I can rely on all our 'flower ladies' but the numbers are falling. It would be such a help if we had some more people willing to be on the rota and be responsible for the flowers once or twice a year. Anyone can volunteer, ladies or gentlemen, and Sue Howard has offered to help anyone who feels slightly unsure about taking this on.

I will be starting work on the rota for 2017 during the autumn. If you love flowers and would like to be included or to find more about what is involved please email me at judithrowe1948@gmail.com or phone me on 01530 243989. I look forward to hearing from you,

Judy Rowe



From The Records Workhouse Row

A few years ago, we discussed Workhouse Row, but with newcomers to the village and changes in planning regulations, it is interesting to reflect back.



Workhouse Row used to be situated abutting the churchyard wall on Bradgate Row. A plaque is situated on the wall of the churchyard put up by the present owners of the house that replaced it.

Workhouse Row was a group of three 17th Century cottages, timber framed, on a stone plinth and with brick infill. None of the houses had a front door and only one of them had a staircase, the other two just had a ladder up to the two bedrooms above.

Workhouse Row was one of the few properties in the village not included in the 1925 sale. Sometime after the Second World War, the properties

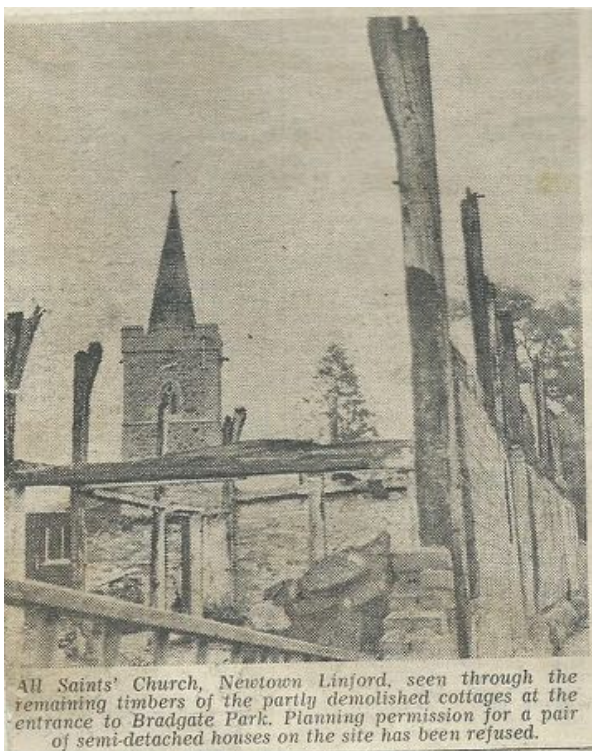


were purchased by the tenant in the middle cottage, Mr William Spencer. By 1961, the owner asked for planning permission to replace the cottages with one modern house. This was refused by the Planning Committee and was made the subject of a preservation order.

Two years later, the cottages were derelict, but the Parish Council had hopes that the Row would be repaired as the owner was eligible for a grant. This did not happen and it is recorded in **Joan Stevenson's book, Newtown Linford The Old Buildings and their occupants** that instead the owner devoted his spare time to pulling them down so that by September 1963, there was no roof or upper storey. Again planning permission was sought for a pair of semi detached houses. Instead Barrow Rural Council Planning Committee decided that the attractive new view of the Church at the entrance to the Park should be retained. The Parish Council were asked by the County Council if they were prepared to buy it but only one member was in favour and that if it was to be purchased, it should be Barrow RC.

Instead in March 1965 Barrow RC decided to allow demolition and one bungalow to be built.

There is a passage in Joan's book that made me smile as this was written in 1998 "A modern semi-bungalow was built and in due course - as is the way with Newtown homes - **greatly enlarged.**" The way of the village/world has not changed in the years since (the editors home was expanded into the attic) as we have seen not only houses expand in various directions but also demolished and rebuilt in recent years in a similar way to Workhouse Row.



All Saints' Church, Newtown Linford, seen through the remaining timbers of the partly demolished cottages at the entrance to Bradgate Park. Planning permission for a pair of semi-detached houses on the site has been refused.







25 **To buy Joan Stevenson's book and others relating to our village and local area go online to the website www.kairos.press.co.uk**

A warm welcome for everyone at



THE
LINFORD

66 Main Street, Newtown Linford
Tel: 01530 244012
thelinford.co.uk

-  Free WiFi
-  Pool Table
-  Free Function Room Hire*
-  Quiz every Wednesday
-  Guest Beers
-  Ample parking

**When booked with bar*

**£1 off all draught beers
Fridays between 7 and 9.30pm**

sky SPORTS

NOW SELLING CRAFT BEER

BT Sport

Dogs with well behaved owners welcome



Paint Wizard

All Types of Vehicle Body Repairs



Panel Resprays from £165

Scratch Removal from £45

Stone Chip Repair from £45

Windscreen Repair from £35

Colour Restoration From £65

Alloy Wheel Refurbishing from £45

Machine Polishing & Glaze from £100

Colour Code Bumper Resprays from £165

Colour Code Wing Mirror Resprays from £45

Free Collection & Delivery Service Available

All prices are plus VAT charged at the prevailing rate

07850 456696

Proprietor Paul Beaver, Grey Crescent, Newtown Linford







Simon Shuttlewood
quality upholstery

- Expert Re-Upholstery**
- Free estimates & advice
Repairs
- New cushions, springs etc
New suites, sofas & chairs,
- All made in our own workshops



*Please phone or visit our shop & showroom
with easy parking*

**7 Edward Street, Anstey, Leicester LE7 7DP
Telephone 0116 2340350**

Charnwood...we have you covered



SELLING?

- Accompanied viewings
- Open 7 days a week
- Free EPC and Floorplan
- Specialists in probate valuations
- Vendor care and sales progression negotiator
- Weekly regular updates

LETTING?

- Full Management for 8% plus VAT.
- All properties advertised with a Floor Plan, no additional charges.
- We don't add a "Service Charge" to Contractor/Third Party Invoices, you get charged what the contractor charges us.
- We do not charge a "Set Up", "Tenant Find" or "Renewal" fee under our Full Management Service.

ARRANGE YOUR FREE SALES/LETTINGS VALUATION BY CALLING

Anstey Office
15 The Nook, Anstey L19 7AZ

0116 235 3009

Barrow upon Soar office
5 High Street, Barrow upon Soar LE19 8PY

01509 274474

Boules

Having just returned from Provence I now realise that playing Boules is tremendously popular. The whole of the back page of the Sports Section was devoted to boules matches, scores, leagues and profiles of players, both men and women. We even saw a few clips on TV.

Our social games at Hoby are a far cry from this competitive environment. Boules can be regarded as one of the simple pleasures of life, good fun, good friends and good food.

The evenings in September are drawing in so we finished the last game of the season under floodlights. In a competitive knockout Brian Anderson won by a couple of centimetres, or was it an inch, after eleven rounds. He will now keep the Chell Challenge Cup for the next eight months, highly polished, until we start again next May.

Boule facts 4

There are a few words in English derived from boules

The small ball, the target, is known as Le but in French. It is also known as un cochonnet, a little pig. In English it is called a jack. The French word "but" is used in English as a target in Archery, and in a different context the butt of jokes.



Boulevard was introduced into the English language by Horace Walpole. Part of the word means a passageway, but evolved into a passage for playing boules. Today you see boules played in the shade from avenues of plane trees, thus avoiding the intense sunlight of southern France. The Romans originated the idea of planting plane trees along their roads to give shade for marching troops.

I like to think of a boulevard in France as a broad tree lined road with games of boules between the trees.

Please come and join us next season, everyone welcome. No previous experience necessary. For more information call 01530 245373.



Newtown Linford Neighbourhood Watch - A member of the Parish Council



There has been no crime reported for several weeks on our patch except for the damage to the double decker bus on the park which is being used by Peppercorns as a café. The report in the Leicester Mercury said the glass in the bus had bullet holes and a resident has informed me that there was a bullet hole in the village shop window from when it was last broken into. Perhaps it is the same culprits.

P.C.S.O Fiona Lacey will have held a Beat Surgery between 10 and 12 on Saturday 10th September. I do not know whether any residents will have been to see her. She recently came with the speed gun and worked on Bradgate Road. They recorded 142 vehicles and 110 were exceeding the 30 miles an hour limit. Fiona has apologized for our September meeting

We will have had the speed gun for three weeks which will have been manned by a dedicated few. Thanks to them. County Hall is no longer able to put the yellow warning signs up due to cost cuts. I have always felt they did make a slight difference to slowing down the traffic albeit temporarily.

Pam McMorran
NHW Co-ordinator – pam@riverlyn.freeserve.co.uk
01530 242201



How to contact the Police

All incidents are to be reported to the Police and not the Beat Team **by calling 101**

They will then assess the situation and deal with the situation as they see fit. This may involve a vehicle from another area. If you wish also advise our NHW coordinator who will circulate if appropriate. The Beat 32 Team can no longer respond directly

KEITH SMITH (ANSTEY) LTD 

6 STADON ROAD ANSTEY LE7 7AY - TEL: 0116 2362395 - sales@keithsmithltd.co.uk

FAST FREE LOCAL DELIVERY**BOSCH**
SMS50T02GB

Dishwasher

- ✓ 12 Place Settings
- ✓ 5 Programmes
- ✓ Half Load
- ✓ Noise Level 50db
- ✓ A+AA Rated

2
YEAR WARRANTYNow
Only **£249.99****BEKO**
WMC1282W

Washing Machine

- ✓ 1200rpm Spin Speed
- ✓ 8Kg Load Capacity
- ✓ Quick Wash
- ✓ 13 Programmes
- ✓ A+++AB Rated

Now
Only **£229.99****HOTPOINT**
WMAQC741P

Washing Machine

- ✓ 1400rpm Spin Speed
- ✓ 7Kg Load Capacity
- ✓ Quick Wash
- ✓ 16 Programmes
- ✓ A+AB Rated

Now
Only **£249.99****BOSCH**
KGN34VW24G

Fridge Freezer

- ✓ Frost Free
- ✓ 191/127 Ltrs
- ✓ 3 Clear Drawers
- ✓ A+ Rated
- ✓ H185 x W60 x D65

2
YEAR WARRANTYNow
Only **£389.99****BOSCH**
WAB28162GB

Washing Machine

- ✓ 1400rpm Spin Speed
- ✓ 6kg Load Capacity
- ✓ A+++AB Rated
- ✓ Express Wash
- ✓ 15 Programmes

2
YEAR WARRANTYNow
Only **£289.99****BEKO**
B12553N3GB

Single Electric Oven

- ✓ Multifunction Cooking
- ✓ A-20% Rated
- ✓ 67 litre Main Oven
- ✓ CircuTherm Fan
- ✓ H59.5 x W59.5 x D55

Now
Only **£349.99****Fitted Kitchens**

We are pleased to announce that we are now agents for A.W.E Kitchens and Bedrooms Who specialise in Bespoke made to measure kitchen & bedroom furniture

Please call in for further details

Internet Pricing
with
Personal Service
"Ask About our
Same Day/Next Day
Installation
and Removal Service"



The Brownies

The brownies had a day out at Swadlincote in June and all had a fab time on the toboggans and the tubing. The weather was fab which made the day perfect. All brownies laughed and giggled the whole time, even synchronising on the tubes by all linking up together. As an adult helper (Mum) will definitely be returning again in the future.



**Isabelle and
Harriet West
age 10**



Gardening Demonstration & Q&A session

Back by popular demand

At The Linford

Thursday 27th October

Starts at 7 for 7.30pm

With

Ady Damon



From BBC Radio Leicester

Tickets £7 includes a drink from the bar

Available from Carolyn Turner 249173

or Vanessa Stanton 0777 9494364

Please note entry by pre purchased ticket only

Raffle in aid of Rainbows



New landscaped
garden

Dogs welcome inside

Log burning stoves

Under new ownership

Homemade cakes
& scones

All-day breakfast
& lunch menu



We're open
9am – 4.30pm
Monday – Sunday

The Old Post Office Tea Room & Store

550 Bradgate Road, Newtown Linford, Leicestershire, LE6 0BH

Tel: 01530 242709



/OldPostOfficeTearoomBradgateRd



Whilst going through the Parish Council paperwork we discovered some CD's of the **Village Design Statement**. Please let us know if you would like one. It is an old document but is still considered to be up to date and a very good guideline.

Peter Tyldesley, Director of **Bradgate Park Trust** will be attending our October Parish Council Meeting on the 24th at 7pm in the back room of the Village Hall. He will be giving an update on what is happening in the Park and then fielding a few questions.

The Parish Clerk from a neighbouring Village visiting the recent presentation commented on how dirty all our road signs are. She told us that the **tall street signs** are cleaned by Leics. Highways and the **road name signs** are cleaned by Charnwood B.C. However it is doubtful whether they are fulfilling their obligations. In her villages she has succeeded in getting local residents who live near a sign to give the road signs a quick clean. So can we do the same?

We have noticed that the paint on the **telephone box** is badly peeling off. We will have to find out who is meant to paint it. Our K6 Kiosk became a statutory Grade II listed feature on the 20th August 1991.

Highways is currently preparing a proposal changing the rules for parking on Bradgate Road and Grey Crescent. When ready this will be submitted to the Parish Council for consultation by the residents and as soon as we get it we will get it circulated.

It is noted that although our signs at the entrance to the village say we are twinned with Bradgate Iowa this is no longer the case. Obviously at some stage these will have to be amended.

Councillor Rob Haylock has agreed to be the Council's representative on the **Bradgate Landfill**. They seem to have one meeting per year. Councillor Haylock has also agreed to become acquainted with the Cemetery Records in order to be back up for me as Registrar of Burials when I am away.

Vice Chair Councillor Sue Colebeck has for several months been the Council's representative for the **Bob Bown Memorial Field** and she reports that new fencing will be put in place by the right hand goal. It was suggested by the contractor that it be left open but we considered that could be dangerous as if the strength of a kick is breaking the fencing what would it do if it hit someone. Last month we mentioned moving the higher up dog bag bin down lower. A resident has suggested it be put to top right hand corner near where the walkers go through into the park or come back through. Comments please.

Councillor Tara Pickles has agreed to be the Council's representative on the **Village Magazine Committee** which again meets once a year.

The **Friends of Charnwood** has approached us to see if residents are interested in erecting information boards about wildlife which they would fund. This will be discussed at the 26th September meeting. We doubt a decision will have been made so comments please.

At the time of writing we have a prospective Councillor to fill the final seventh space on the Council. Hopefully we will be back to full strength.

The date of our next Meetings are 24th October and 5th December. There will be no meeting in November. Parish Councils are only under an obligation to meet four times per year but this has never been the case here in Newtown Linford.

Pam McMorrán –
Parish Clerk
01530 242201



IDC Home Maintenance
Painter Decorator and Property Maintenance

NO JOB TOO SMALL

From changing a light bulb to complete house re-decoration.
For all the jobs you need to do but simply don't have time.

For a free quotation please call Ian on:
01530 245461 or 07885 541428
3 The Nook, Markfield, Leicestershire

Web site: www.idchomemaintenance.co.uk
Full Tradesman Liability Insurance held

✂

Booking of Village Facilities

To book the Village Hall
call Pat Wood on 242251.

To book the Sunday
School Room

£10 per hour, £15 for two
hours, £20 for 3 hours,

Call Casey Pearson on
249259

Foot Problems ?

Corns, Calluses, Veruccae, Hard Skin, Nail
Problems, Athlete's foot,
Sore and Cracked Heels.

Have them treated
Professionally in the comfort of
your own home

Ring **Alistair Watt** MCFHP.MAFHP.
Foot Health Specialist

Tel 01530 243009
or 07802 777221

Evenings and weekends
available

Service with a smile -



Contributions to Village Magazine

Can we have your contributions for the **November 2016** issue by **15th October 2016** please. **Send to the Editor, Carole Heubeck, 5 Grey Crescent, Newtown Linford (01530 244790).**

E-mail heubeck111@btinternet.com

Please could you send any emails to the above email addresses. If you do not receive an acknowledgement of your email - please contact Carole, the Editor direct on the above number to check we have received it.

The opinions expressed by the contributors are not necessarily those of the Editors and they reserve the right to amend, shorten or not print any article or advertisement submitted for publication. Whilst every effort has been made to ensure the accuracy of the information printed in this magazine, and advertisements are accepted in good faith, no liability can be accepted for loss, damage or claim of any kind incurred by the reader



LIZ TUCCY

**LIZ TUCCY WEALTH
MANAGEMENT**



A wealth of expertise on your doorstep

We provide an experienced wealth management service
and offer specialist advice in a wide range of areas including:

- Investment planning
- Retirement planning
- Inheritance Tax planning

Tel: 01163 190958

Mobile: 07810 798714 Email: liz.tuccy@sipp.co.uk Website: www.liztuccy.co.uk

3 Summerfield Drive, Anstey, Leicestershire, LE7 7QA

Anstey & District Funeral Services

Independent Funeral Directors
and Monumental Masons
JG 0116



We can take care of every
detail, advise and help you on
each and every step of the way.

- Traditional hearse & fleet
- Flowers arranged for you
- Horse drawn carriages,
motorcycle hearse &
alternatives available
- Memorial showroom
- Extensive car parking
- Private catering suite &
private chapels of rest
- Funeral Flights available
- Independent, 24hr Service



Funeral arrangements can be made in the
comfort of your own home if preferred

24hr Service - 0116 234 0548

Taibott House, Leicester Road,
Anstey, Leicester, LE7 7AT
www.ansteyfunerals.com

Golden Charter
Funeral Home

