

# **ISSUE NUMBER 110**

## **CONTENTS**

### **December 2013/January 2014**

<b>Church News</b>	<b>3/4, 22/24, 38</b>
<b>Village Hall Defibrillator</b>	<b>5</b>
<b>Ramblers</b>	<b>7</b>
<b>Bradgate Park</b>	<b>9</b>
<b>Bradgate Park Christmas Fair</b>	<b>11</b>
<b>Choral Society Come &amp; Sing</b>	<b>12</b>
<b>Seniors Christmas Lunch</b>	<b>13</b>
<b>Gardening Club</b>	<b>16</b>
<b>Computer Tips</b>	<b>19</b>
<b>Flower Club</b>	<b>29</b>
<b>Groby Community College</b>	<b>30</b>
<b>Brownies</b>	<b>31</b>
<b>From the Records</b>	<b>35</b>
<b>Neighbourhood Watch</b>	<b>36</b>
<b>Parish Council</b>	<b>39</b>

# pre-printed adverts

# The Bradgate Team Parish

It was a bit of a shock to hear last month that Derby Council were seriously considering not having Christmas lights next year, because they are broken.

It was a shock because lights are so much part of our experience that it is hard to imagine Christmas without them. For they still, at least for many of us, act as a signpost to the Xmas story - a light coming into a dark world carrying with it a sense of something worth celebrating, come what may.

But to switch the lights off is a bit like saying that tradition no longer matters, that there is no good news, that we are bound by unmanageable debt and that things are so bad that we can't even afford the electric. And that's shocking!

Mainly, because it's untrue - that there is no good news, I mean!

In truth, whether we have Christmas lights or not, whether there are presents under our tree, or even if there is no tree, it would not be the end of life as we know it, for the real light, the light which was born on Christmas Day will always be there for us.

In the Bible, the first chapter of the Gospel of St John reminds us that:

*<sup>9</sup> The true light that is Jesus and which gives light to everyone was  
<sup>3</sup> coming into the world. <sup>10</sup> He was in the world, and though the world*



*was made through him, the world did not recognize him. <sup>11</sup> He came to that which was his own, but his own did not receive him. <sup>12</sup> Yet to all who did receive him, to those who believed in his name, he gave the right to become children of God— <sup>13</sup> children born not of natural descent, nor of human decision or a husband's will, but born of God. <sup>14</sup> The Word became flesh and made his dwelling among us. We have seen his glory, the glory of the one and only Son, who came from the Father, full of grace and truth.*

Lights or no lights in Derby, if I can quote Morrissey's song, "*there is a light that never goes out!*"\*

Good News, eh? About Jesus' birth, I mean.

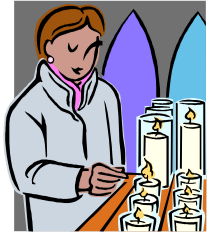
Happy Christmas!

Keith Wignall, Lay Reader

\*"There Is a Light That Never Goes Out" - Morrissey and Marr (1986), Header design by Simon Smith, used with permission, adapted.

### Open Church 21st December

This year the Church will be open for the day on 21st December to enable residents and visitors to drop in, view the Christmas Decorations and leave a prayer request and light a candle, for a loved one.



**Roy Hand**, who, with the assistance of his wife, June, has organised the distribution of the Church/village Magazine for many, many years has now stepped down from his role. Roy and June would like to thank everyone, especially the deliverers, who has assisted them over the years, for their support, their co-operation and especially their friendliness.

Peter Sayer is taking over the role and Roy is sure that he will be similarly welcomed and assisted.

Roy has undertaken this work for many, many years. The Magazine Committee would like to express their, and the whole Community's, appreciation for Roy and June's years of dedicated work for the Church and the Village.

## VILLAGE DIARY



### **December 2013**

- 4th Flower Club  
7th/8th Bradgate Christmas Fair  
12th Seniors Christmas Lunch  
14th Ramblers  
15th Carols by Candlelight - Church  
16th Newtown Linford Parish Council  
19th Choral Society Come and Sing Village Hall

### **January 2014**

- 11th Ramblers  
31st Choral Society

### **Regular events**

- |                                 |                                     |
|---------------------------------|-------------------------------------|
| Monday afternoon                | Mature Movers fitness class V. Hall |
| Mondays 8pm at the Church       | Bell Ringing                        |
| 1st Monday of the month         | Youth Club                          |
| 4th Tuesday of the month        | Gardening Club                      |
| 1st Wednesday of the month      | Flower Club                         |
| 3rd Wednesday of the month      | Ladies Luncheon Club                |
| Thursdays am during school term | Toddlers Group                      |
| 3rd Thursday                    | Gentlemen's Lunch Club              |

## **Village Hall Public Access Defibrillator and the Village Emergency Telephone System (VETS)**

There was an excellent presentation on this in the Village Hall on 20<sup>th</sup> November.

If you missed it, and would like more information, or are interested in being one of the VETS volunteers willing to give assistance in an emergency by fetching the defibrillator from the Village Hall, please let Claire Costello know.

e-mail: [cebroughton@hotmail.com](mailto:cebroughton@hotmail.com)

Tel. 01530 249613





# THE BRADGATE

NEWTOWN LINFORD



Join Leicestershire and Rutland's big sing-along where you are..

## SING CHRISTMAS 2013

The BBC Leicester Big Christmas Sing – Live from The Bradgate, Newtown Linford

7pm – 8pm MONDAY 23rd DECEMBER

SING CHRISTMAS is an interactive sing-along carol concert organised by BBC Radio Leicester, Leicestershire Churches Media & the Diocese of Leicester. It is broadcast live on **Monday 23rd Dec 2013 at 7pm**. Join us for a Christmas Carol sing along live with BBC Radio Leicester, broadcasting with venues all across the county. There'll be lots of well-known Christmas carols to sing along with, interactive elements and special guests – all celebrating the real meaning of Christmas.

Complimentary Tea/Coffee and Mince Pies for all carol singers that attend.

## 3 Fantastic New Offers

### Steak Nights

Every Friday Night from 6pm

2 x 8oz Rump Steaks  
& a Bottle of Wine £30

2 x 10oz Sirloin Steaks  
& a Bottle of Wine £37.50

Served with Hand-Cut Chips,  
Homemade Onion Rings,  
Field Mushroom & Choice of  
Peppercorn or Blue Cheese Sauce

Wine is choice of any of our house wines -  
Shiraz/Cabernet Sauvignon/Chenin Blanc/  
Chardonnay/White Zinfandel

### Pizza Offer

Available 12 till 9pm  
Monday to Friday

2 Pizzas  
for £15

### Fixed Price Menu

Available  
Monday to Thursday

12 till 3pm & 6 till 9pm

2 Courses £12  
3 Courses £16

visit [www.thebradgate.com](http://www.thebradgate.com) email [contact@thebradgate.com](mailto:contact@thebradgate.com) or call 01530 242239

37 Main St, Newtown Linford, Leicestershire LE6 0AE

## **Village Ramblers 2013**

**MEET** Opposite the Village Hall, to depart at 2pm.

14th December            Ed Killick            01530 249 589

Meet at 11am, walk, lunch & AGM afterwards.

11th January 2014      Lesley Baker      01509 890 771

Thank-you to Allan for leading the November walk. The sun shone on a very small group of 7 members on Saturday's ramble, as many of the regulars were away, holidaying in exotic locations. We enjoyed walking around the outside of the park to Hallgates, returning over the high park, arriving back as dusk fell. Ten members set an all time record for being away in sunnier climates, in Hawaii, Galapagos, Burma, Madeira, Cornwall and Sheffield. We hope you are all back for Ed's pre -Christmas walk on 14th December. Please note the early start time.

**We wish you all a Merry Christmas and a Happy New Year.**

**ANY QUERIES -Ring Glenis Meredith 01530 242897**

Well-behaved dogs only are welcome. To be under the close supervision of the owner, and to be on the lead where there is livestock or nesting birds. Please check with the leader that dogs are allowed across any access land.

Disclaimer. Members are reminded that participation in walks is at their own risk, and that the leader(s) accepts no liability for any loss or injury, however caused.



With the change in weather signalling the start of winter it really is the best time to book your festive lunch at the Grey Lady Restaurant, offering the following three course lunch menu



#### STARTER

##### **Winter Vegetable Soup**

**Salmon Mousse,  
Prawns & Marie Rose**  
Cucumber Salad,  
Melba Toast

**Ham Hock Hash**  
Homemade Brown Sauce,  
Fried Hens Egg

**Forest Mushroom  
& Brie Tart**  
Pesto Aioli, Dressed Leaves

**Carpaccio of Melon**  
Tangerine Jelly,  
Winter Spiced Syrup

#### MAIN COURSE

**Slow Roasted  
Sirloin of Beef**  
Roast Potatoes,  
Yorkshire Pudding,  
Roasted Parsnips, Gravy

**Roasted Turkey Breast**  
Stuffing, Sausages, Roast  
Potatoes, Cranberry  
Compote & Gravy

**Pan Fried Salmon**  
Potato Croquette, Sautéed  
Winter Greens,  
Lemon Butter Sauce

**Chicken Breast**  
Potato Gratin, Cabbage  
& Bacon, Chantenay  
Carrots, Gravy

**Wild Mushroom Ravioli**  
Parmesan Cream Sauce,  
Truffle Essence

#### PUDDING

**Christmas Pudding**  
Brandy Sauce, Ice Cream

**Chocolate & Coffee  
Fudge Cake**  
Bailey's & White  
Chocolate Topping

**Cranberry & Orange  
Meringue Pie**

**Sticky Toffee Pudding**  
Toffee Sauce, Ice Cream

**Cheese & Biscuits**

**£25.00 per person**

Why not book your table now by calling 01530 243 558 or email [melanie@the-grey-lady.co.uk](mailto:melanie@the-grey-lady.co.uk)



*Receive free tea and coffee with your Christmas lunch quote 'Newtown Linford magazine'*



Sharpley Hill | Newtown Linford | Leicester | LE6 0AH

Telephone 01530 243558 | Fax 01530 244832

Email [info@the-grey-lady.co.uk](mailto:info@the-grey-lady.co.uk) | Website [www.the-grey-lady.co.uk](http://www.the-grey-lady.co.uk)



## **From the Park**

### **Winter Finally Arrives**

I suppose it had to end eventually. The warm weather that we had basked in all Summer was followed by a mild Autumn and then, finally, in early November Winter arrived.

In fact, as often seems to happen, the beginning of the wet weather coincided with the start of a building project with the team from Adrian Percy Builders battling the rain and the mud as they dug the foundations for the extension to the toilet block.

The rain also delayed the marking out of the car park. “You should have done this in Summer”, said the contractor. I did not like to point out that, with over 30,000 cars using the Newtown Linford car park between July and September, he might have struggled to find any empty tarmac to paint lines on.

We fortunately had a fine evening for our Halloween event on 31<sup>st</sup> October. Organised in partnership with Woodlark Forest School, over 100 people joined us for an evening of apple-bobbing and spooky stories around the fire topped off by the Ghost Walk, featuring Bradgate Park Rangers as they have never been seen before!

Woodlark are also now running a Parent & Toddler Group based at the Conservatory Tearoom on Tuesday mornings. The group aims to get the children out exploring Nature in all but the foulest of weather, but with a warming cup of coffee or hot chocolate for the adults never too far away. Details are on our website.

The mild weather in October meant that the deer rut was a bit of a slow-burner: a cold snap at that time of year seems to liven things up a bit. However, the weather did encourage large numbers of people to join the guided walks that our Rangers lead into the Deer Sanctuary during the rut, which are an opportunity to see the action at close quarters.

Readers may be aware of the Lottery-funded Charnwood Roots local history project being run by the Victoria County History Trust. We will be working with the project team to facilitate some community archaeology and hopefully stage a joint exhibition at the end of the project. More information about the project and opportunities to get involved can found on the Victoria County History Trust website.

During October, Leicestershire County Council Highways did a vehicle count for us at Swithland Wood. The results were very interesting – a  
9 total of 4,786 vehicles used the two car parks during the 4-week period of the study. However, during the same period we collected

only £821 through the honesty boxes. Obviously, a lot of people parking in the Swithland Wood car parks are season ticket holders or have bought a ticket at one of the Bradgate Park Pay & Display machines, which entitles them to park at Swithland Wood as well. However, this still leaves a large number of motorists who are parking in the car parks and ignoring the request to deposit the £1 parking charge in the honesty box. If anyone reading this falls into this category, I would urge you to please pay the charge in future. For regular visitors, a season ticket offers excellent value and all the money that we raise goes towards the upkeep of the Park and Wood. I hope to be able to announce some exciting news about Swithland Wood in the New Year and I would rather not have to add to this the announcement of the arrival of Pay & Display machines as well.

By the time this edition is published, our Christmas Fair will be upon us. I am really pleased to be able to announce that children from the Village School will be singing on the Sunday afternoon and I hope that you will come along to support them and us on the weekend of 7<sup>th</sup> and 8<sup>th</sup> December.

Looking ahead to next year, I am pleased to be able to announce that the first 'Bradgate Lecture' will be held on Wednesday 26<sup>th</sup> February in Newtown Linford Village Hall when Dr Phil Wilby, Regional Geologist for the East Midlands at the British Geological Survey, will give a talk on 'The Geology of Bradgate Park'. The event starts at 7pm. There will be more details in the next edition of the Magazine.

On behalf of all of us at the Bradgate Park Trust, I would like to wish you a very Happy Christmas and we look forward to seeing you on the Park in 2014.



## **BRADGATE PARK FIREWOOD**

Unseasoned £65 per cubic metre

Seasoned £90 per cubic metre

Free delivery in Newtown Linford  
Reasonable delivery charge elsewhere

Tel: 0116 236 2713

Email: [estate-office@bradgatepark.org](mailto:estate-office@bradgatepark.org)



The Bradgate Park Trust is Proud to  
Present the first

# **Bradgate Park Christmas Fair**

## **Saturday 7th & Sunday 8th December**

This family event will include:

**Demonstrators' Field featuring Charnwood Forest  
Alpacas, falconry, chainsaw sculpture and  
living history with The Sealed Knot**

**A range of stalls showcasing locally made produce  
and gifts**

**Art & Craft exhibition featuring the work of some of our  
Art in the Park exhibitors and other local artists  
and makers**

**Santa's Grotto**

**Entertainment**

If you would like to participate in the Christmas Fair as a demonstrator, exhibitor or stallholder, please get in touch. Contact the Estate Office on 0116 236 2713 or email [estate-office@bradgatepark.org](mailto:estate-office@bradgatepark.org)

**NEWTOWN LINFORD CHORAL SOCIETY  
COME AND SING CAROLS & CHRISTMAS SONGS**



Village Hall

7.30pm-9.30pm. **Doors open 7pm**

Thursday, 19th December

**All ages welcome – to sing or to listen!**

Free Admission, retiring collection for Charity.

**I would like to wish all my  
friends and acquaintances a very  
Happy Christmas and a Prosper-  
ous New Year for 2014.**

**Thank you all for the numerous  
cards I received o the occasion  
of my 90th birthday**



**Eunice Gibbons**

# COVERING *Martin Page* YOUR LOCAL

The Newtown Linford Area

**Tree**



**Surgeon**

Have you considered your trees may need some maintenance from time to time. Are your trees maybe too tall blocking light, unsafe or untidy?

Or maybe you need to remove that stubborn stump.

Do your hedges, Conifers or shrubs need trimming.

With 30 years of experience working with trees in your area, I would be pleased to offer you free advise and a free quotation.

I also sell high quality firewood logs

*call me now on*

**01530 251312**

*Constantly Recommended*

**charnwood**



- Fully Insured
- Local family business
- Clean & tidy service



Newtown Linford Village Hall Committee

**SENIORS CHRISTMAS LUNCH**

Thursday 12<sup>th</sup> December

Doors open at 12.00

Ticket price £8

Call Bev – 242632

**fionafrankland**

legalservices

Tel: 0115 9393360

Email: [fiona@fflegalservices.com](mailto:fiona@fflegalservices.com)

Mobile 07973 701275

We offer the following:

- Probate Services
- Wills
- Lasting Powers of Attorney
- Court Of Protection
- Advance Directives (Living Wills)
- House Clearance — Full Or Part Homes Cleared
- Care Fee Planning and funding
- Pre paid Funeral plans

Also offering services for Wealth management

Home visits and hospital visits. Evening and weekend appointments

**Over 20 Years experience. A member of the Institute of Legal Executives and the Society of Trusts and Estate Practitioners**

**MARTIN ALLEN**

**FLOORING &  
FRENCH  
POLISHING**

**YOUR LOCAL  
FLOORING SPECIALIST.**

**All timber floors laid**

**All existing timber floors  
sanded and refinished**

**Any colour or finish**

**Free quotations  
call Martin.**

**0116 2165107**

**07973256176**

**CONSERVATORY  
REPAIRS AND  
RENOVATIONS**

Blown Panels replaced  
Roof Replacements - Glass or  
Polycarbonate

Leak Repairs and Resealing  
Solar Film Application

**Classic  
Conservatories**

**CONTACT - Chris Gee**

**Mobile 077 6933 1419**

**Tel 01530 242 958**

# NEWTOWN LINFORD CHORAL SOCIETY

& Orchestra

Conductor : Sue Ford



## *A Choral Collection*

*Vivaldi's Gloria, Hummel Mass in Bb*

*Todd, Call of Wisdom; Rutter, Carol of the Magi*

**31st January & 1st February 2014**

**8pm,**

St Philip & St James Church, Ratby

**Tickets:£10 (Children £5)**

from Newtown Linford Stores,

Ratby Post Office &

Peter Sayer 01530 243822

Registered Charity No. 1079843

## Newtown Linford Gardening Club

Christine Walkden entertained a packed audience at the October meeting of the gardening club. Our own members, their friends and visitors from Gardening Clubs around the County heard her talk about the ups and downs of being a gardener. With no props, slides or illustrations of any kind, she brought us into her own world and the things about which she cared. She told us about her childhood and how gardening at home and managing an



allotment took up more and more of her time. When she resolved to make horticulture her chosen profession she told us of the challenges she faced in a male-dominated world which found a young girl with a feisty temperament a difficult thing to deal with.

We laughed and marvelled as she described the doomed efforts of a make-over specialist to make her telegenic for the small screen; how she discovered an interest in types of soil by digging graves in a Lancashire cemetery; and how, as a lecturer and teacher, she used gardening to turn around the lives of wayward youngsters in South Wales.

Our photograph shows Christine with our chairman Brian Anderson as she took questions from the audience.

This was a marvellous way to bring our year to an end. We will finish with our Christmas party in early December and then turn our minds to another year with lots of exciting events planned.

We have welcomed a large number of new members this year and will be pleased if others want to join us. If you are interested in our activities just contact the secretary (tel. 242452 or e-mail [01530242452@talktalk.net](mailto:01530242452@talktalk.net)), or come to one of our meetings to see how you like it before making a commitment (£2 for visitors). Alternatively give us a ring and ask for a copy of our programme for the coming year and we will be pleased to send one to you.

**Anne and David Couling**





The Grey Lady Restaurant is excited to launch The Grey Lady Kitchen & Deli in the centre of Newtown Linford, offering the quality associated with the Grey Lady in an informal dining environment.



Whether you are looking for takeaway deli produce, coffee and cake, a light lunch from our daily changing menu of fresh and seasonal dishes or Friday night fish and fizz the Grey Lady Kitchen & Deli offers the perfect venue to socialise with friends.

**Grey Lady Kitchen & Deli**

544 Bradgate Road Newtown Linford Leicestershire LE6 0HB

Telephone: 01530 245 801

# KEITH SMITH (ANSTEY) LTD

EURONICS

6 STADON ROAD ANSTEY LE7 7AY - TEL: 0116 2362395 - sales@keithsmithltd.co.uk

## FAST FREE LOCAL DELIVERY



**ZANUSSI**  
**ZWG7120K**  
Washing Machine  
✓ 1200rpm Spin Speed  
✓ 6kg Load Capacity  
✓ 30min Quick Wash  
✓ 16 Programmes  
✓ A+AB Rated

Now Only **£249.99**



**HOTPOINT**  
**DHS53XS**  
Built-In Double Oven  
✓ 5 Programmes  
✓ Lights in Both Ovens  
✓ Double Glazed Doors  
✓ Stainless Steel  
✓ A Rated

Now Only **£449.99**



**BEKO**  
**DP8045CW**  
Condenser Dryer  
✓ 8kg Load Capacity  
✓ 16 Programmes  
✓ Time Delay  
✓ Wool Refresh  
✓ A+ Rated

Now Only **£349.99**



**HOTPOINT**  
**WMEF742P**  
Washing Machine  
✓ 1400rpm Spin Speed  
✓ 7Kg Load Capacity  
✓ Quick Wash  
✓ 16 Programmes  
✓ A++AB Rated

Now Only **£329.99**



**BOSCH**  
**SMS50T02GB**  
Dishwasher  
✓ 12 Place Settings  
✓ 5 Programmes  
✓ Half Load  
✓ Noise Level 50db  
✓ A+AA Rated

Now Only **£279.99**



**BOSCH**  
**WAB28061GB**  
Washing Machine  
✓ 1400rpm Spin Speed  
✓ 5.5kg Load Capacity  
✓ A+AB Rated  
✓ Express Wash  
✓ 2 Year Guarantee

Now Only **£299.99**

### Fitted Kitchens

We are pleased to announce that we are now agents for A.W.E Kitchens and Bedrooms Who specialise in Bespoke made to measure kitchen & bedroom furniture

Please call in for further details

### Free Professional Installation

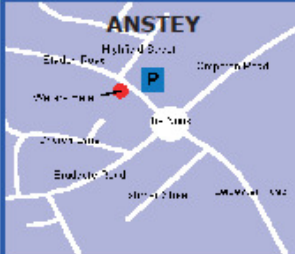
(worth £29.99)\*\*

### Free Removal of Old Appliance

(worth £14.00)

### Free Removal of Packaging

\*\*To Existing Fittings



## Computer Tips

In a series of tips for the less than expert computer users, Joe Costello, local retired ICT teacher, Engineer and self confessed Computer Geek, offers useful and practical advice in dealing with PCs and laptops. He is also offering, **on a pro bono basis**, more direct assistance to his Newtown Linford neighbours with help on repairs, installations, and software and hardware problems. You can contact Joe either by email at [Newfordcomputerhelp@hotmail.co.uk](mailto:Newfordcomputerhelp@hotmail.co.uk) or through this Magazine.



## Greetings

If I had to choose one tool for solving computer problems it would probably be the internet. Recently I needed to know how to get into an old laptop to make an upgrade. Within 30 seconds of going on line I was watching a video of a guy in Iowa disassembling the very model. Truly the internet is a land of Angels & Demons; the trick is to spot the difference.

If you have a problem and are attracted to the idea of tackling it yourself try the following. Type into Google the key words of your problem, “Can’t open such n’ such”; “Computer crashes when I.....”. Or, if you get an error message, like, “Failed due to error, Error Code X.0000x0” then cut and paste the whole thing.

Ignore encyclopedia and dictionaries and look for Forums. Check carefully the name of any website you are going to visit. Avoid anything that implies improving your PC. Also avoid anything containing the words “Fix computer problems.” Or “Download repair tool.” as they will do neither. I would suggest you do not register, even with the good guys; just look for an entry by someone who has had the same problem as you, and read the solution.

Only once has this form of diagnosis failed me. As a rule of thumb, you will know you are in the right sort of forum if the vocabulary is a bit... er .. choice. In the right forums you will find real people venting their frustration and using colourful language. Of course this is of little use if you can’t get onto the internet. Then you would have to find a friend with internet access and take a pen and paper, failing that contact me.

On a completely separate matter. If you are considering purchasing a new PC or Laptop it may be wise to hold off for a while. The people (the Intel corporation) who make the computer chips (CPUs) have just brought out their latest range called Haswell (or fourth generation i7 CPUs). Intel have clearly focused their research and development into making their best chips available for use in laptops. So the improve-

ments have been in: power consumption, important for laptop battery life but much less important for PCs; and graphics, the amount of the chips specifically designed to process picture and video information, again important for laptops but largely irrelevant to PCs, as PCs have the space for other special bits called Graphics or Video cards to deal with such information.

The reason I advise waiting is that the improvements in the 4<sup>th</sup> generation chips is small compared to improvements expected in the next generation, 12 to 18 months away. Power reduction from around 80watts to 10-20 watts and a thickness (that largely determines speed) reduced from 22nm to 14nm. These are truly dramatic improvements for which it is worth waiting.

Intel's intentions to make their chips suitable for laptops, make it almost certain that Desktop and Tower PCs will become a thing of the past over the next ten years. Serious gamers will use other platforms such as Xbox and PSP, and laptops will by then be able to perform all other functions.

Cheers, **Joe Costello**

### **COME AND ENJOY MUSIC MORE!**

Do you enjoy classical music and would like to know more about it?

Enjoy Music More meets at the Adult Education College in Wellington Street, Leicester on Tuesdays from 10 a.m. to 12.00 from September to March each year . The well-known local organist, choirmaster and music teacher Robert Foreman talks to us in his very individual style about a variety of music and we then listen to and discuss the music.

Are you interested? Ring Martin on 0116 2592868 or Ken on 01455 822285.

**Could we remind horse riders not to ride on the pavement.** It is very kind of them to consider the motorist but the dirt left on the pavement has spent the last two weeks been trodden in not only by pedestrians but I also saw a father wheel his young son through it on his plastic bike without realising it as he admired the  
20 view across the cricket ground



**E.W. Goddard  
& Sons**

(Established 1970)

**QUALIFIED PLUMBERS  
Bathroom and Tiling  
Specialists**

**All Building Work  
and Renovation**

\*\*\*\*\*

305 Markfield Lane  
Markfield LE67 9PR

**Telephone**

**01530 245316 or 0116 2311672  
07961 319908 or 07961 319907**

**Peter Henton**

**Domestic Appliance  
Repairs**

**Ex Zanussi Senior Engineer**

**Tel 0116 2896529**

**Mobile**

**07711 265414**

**Paint Wizard**

**Proprietor Paul Beaver, Grey Crescent, Newtown Linford**

**Working for You—All types of smart repairs including:**

**Panel Resprays from £165**

**Bumper Corner Repairs from £75**

**Colour Restoration From £65**

**Windscreen Repairs From £35**

**Alloy Wheel Refurbishment from £45**

**Leather & Trim Repairs from £65**

**Free Collection & Delivery Service Available**

**All prices are plus VAT charged at the prevailing rate**

**07850 456696**

## BRADGATE TEAM SUNDAY SERVICES—December 2013

DATE	GROBY	RATBY	NEWTOWN LINFORD
1st December	8.00am Holy Communion (PH)		
1st of Advent	9.30am Christingle (LC)	10.00am Christingle (PH/HH)	10.30am Holy Communion (JW)
	6.30pm Holy Communion (LC)	6.00pm Holy Communion (FB)	
8th December			8.00am Holy Communion (LC)
2nd of Advent	9.30am Morning Prayer (KW)	<b>10.30am</b> Holy Communion (LC)	10.30am Morning Prayer (PH/ Ros)
	6.30pm Evening Prayer (Ros/PH)		
15th December	8.00am Holy Communion (LC)	8.00am Holy Communion (PH)	
3rd of Advent	9.30am Holy Communion (LC)	10.00am <b>Nativity at Methodist church</b>	10.30am Holy Communion (FB)
	6.30pm 3SE	<b>6.30am</b> Carol Service (PH/FB)	<b>4.00pm</b> <b>Carol Service (PH/ Ros)</b>
22nd December			8.00am Holy Communion (PH)
4th of Advent	9.30am <b>Nativity (LC)</b>	10.00am Family Communion (PH)	10.30am Morning Prayer (KW)
	6.30pm Carol Service (LC/KW)		
24th December	6.00pm Celebration for All (LC)	<b>4.00pm</b> Crib Service (PH)	<b>5.30pm</b> Christingle (PH)
Christmas Eve	<b>11.00pm</b> Midnight Mass (LC/KW)	<b>11.30pm</b> Midnight Mass (PH/ FB)	<b>11.30pm</b> Midnight Mass (Ros/ TBC)
<b>25th December</b>	8.00am Holy Communion (PH)	8.00am Holy Communion (LC)	
<b>Christmas Day</b>	<b>10.00am</b> Christmas Celebration (LC)	<b>10.30am</b> <b>Christmas Celebra- tion (PH)</b>	<b>9.15am</b> Holy Communion (PH)
22 <sup>29</sup> th December	<b>10.00am—Parish Service held at Groby Church</b> Family Communion (FB)		

## MIDWEEK COMMUNION SERVICES—December 2013

<b>NEWTOWN LINFORD</b>	Thur	10am	5th			
<b>GROBY</b>	Wed	9.30am	4th	11th	18th	
<b>RATBY</b>	Thur	9.30am		12th		

## BRADGATE TEAM SUNDAY SERVICES - January 2014

DATE	GROBY	RATBY	NEWTOWN LINFORD
5th Jan Epiphany Sunday	8.00am Holy Communion (LC)	8.00am Holy Communion (PH)	
		10.00am United Parish Service	
	6.30pm Holy Communion (LC)		
12th Jan Baptism of Christ			8.00am Holy Communion (PH)
	9.30am Holy Communion (LC)	10.00am Holy Communion (PH)	10.30am Family Service (RC/KW)
	6.30pm Evening Prayer (RC/PH)		
19th Jan Week of Prayer for Christian Unity	8.00am Holy Communion (PH)		
	10.00am Special Service at URC (LC)	10.00am Special Service at Methodist Church (PH)	10.30am Holy Communion (FB)
	6.30pm 3SE (LC)	6.00pm Holy Communion (PH)	
26th Jan 3rd Sunday of Epiph- any			8.00am Holy Communion (LC/RC)
	9.30am Holy Communion (LC)	10.00am Holy Communion (PH)	10.30am Morning Prayer (KW/RC)
	6.30pm Evening Prayer (PH/RC)		

## JANUARY 2014 MIDWEEK COMMUNION SERVICES

<b>GROBY</b>	Wednesdays	9.30am	8th	15th	22nd	29th
<b>RATBY</b>	Thursdays	9.30am	9th	23rd		
<b>NEWTOWN LINFORD</b>	Thursday	10.00am	-----	-----	-----	-----

## CHURCH REGISTERS

### Baptisms

17th November ~ Georgina Daisy Marsh

*We welcome Georgina in to the church family*

### **Church Contact Details**

Team Rector Revd Dr Peter Hooper      0116 239 4606  
The Rectory, 23 Ferndale Drive, Ratby, LE6 0LH  
Email: peter@hoopers.orangehome.co.uk

Team Vicar Revd Louise Corke      0116 231 3090  
58 Pymm Ley Lane, Groby  
Email: words.th@talktalk.net

Helen Hayes (Team Curate)      0786 7963328  
Parish Office: Bekki Williamson (9am - 11am weekdays)  
0116 239 3768      Email: office@bradgateteam.org.uk  
Team website: www.bradgateteam.org.uk

### **Regular Events**

Bell ringer's practice: Monday 8pm





# THE LINFORD

*"Your village local"*

Main Street Newtown Linford

## Beautifully Newly Refurbished Function Room

Sky TV inc ESPN

Wi-Fi

Weekly Table Tennis Club

Weekly Quiz every Wednesday

Monthly Bingo

Tel: 01530 244012 after 6pm

## Safeclean®

*The furnishing care specialists from* 

### Professional carpet & upholstery cleaning and repair services

- ◆ Curtains cleaned in situ
- ◆ Expert spot & stain removal
- ◆ Guaranteed 5 year anti-stain policy
- ◆ Hand finishing of swags & tails
- ◆ Mattresses deep cleaned
- ◆ Pest control, unpleasant or destructive pests removed

Telephone 0800 328 2927

[www.safeclean.co.uk](http://www.safeclean.co.uk)

25

## SYKES JEWELLERS

**WATCH, CLOCK & JEWELLERY REPAIRS**

**WATCH BATTERIES AND STRAPS FITTED WHILE YOU WAIT**

**8 BRADGATE ROAD, ANSTEY**

**TEL: 0116 236 2510**

**[sykesjewellers.co.uk](http://sykesjewellers.co.uk)**



## Wishing You A Happy Holiday Season and a Healthy 2014



Hello everyone! Can you believe the Christmas Season is upon us and 2014 is just around the corner? It's that time of the year when we all tend to hibernate and allow ourselves to gain a 'few extra pounds' justifying to ourselves that we need it to get through the winter months!!

Well, in reality we have no reason to become couch potatoes in the next few months. Here are a few tips to help keep the pounds off this Christmas Season.

**First**, don't be tempted by all the oversized biscuit and chocolate selection tins out there. Make some smarter snack choices – unsalted nuts, dried fruits (in small amounts), freshly chopped veggies and hummus and any fresh fruits.

**Second**, don't be tempted to skip breakfast this season, especially on Christmas Day. Skipping breakfast causes a dip in blood sugar which then causes our brains to crave the most sugary, carb filled snack possible. Eating breakfast will also prevent an over indulgence of food later in the day.

**Third**, watch the amount of booze you imbibe. I love a nice glass of red wine but the calories in alcohol really DO add up and these particular calories get stored very easily as fat.

**Fourth**, New Years Resolutions – Haha!! We all make them but very few of us last more than a few days! So, for 2014, I have a plan – start your New Years Resolutions on 2<sup>nd</sup> January instead of 1<sup>st</sup> January. Let's be honest, some of us do wake up feeling a little worse for wear on the 1<sup>st</sup> and not always in the right frame of mind to start afresh. The 2<sup>nd</sup> is a much better day to commit to our new wishes – with a clear head and body!

If one of those resolutions is to get fit and healthy, PLEASE BE PATIENT. Long term weight loss and fitness do not happen overnight, nor do they happen in one or two months. Create a goal and time frame for yourself and make it a realistic one. Quick fix weight loss programmes don't usually work and participants usually end up gaining more weight than they were to begin with. It is never too late to get fit and healthy. The long term health benefits you will reap are amazing!

If you need any further information, email me at

[Forestfitstudio@gmail.com](mailto:Forestfitstudio@gmail.com) Happy Christmas, Jacqui x



Leicestershire  
**Police**  
Protecting our communities



# Traffic Management

September 2013 Edition

SCHOOL ROAD SAFETY

External Use

## DON'T BE A ZIG ZAG SHARK!

When children arrive or leave school each day parents behaviour can either protect or endanger them.

The start of a new school term is always a hectic time and parking is a source of great concern for parents and residents alike.

Inconsiderate parking is not only selfish but dangerous and can cause accidents.

Parking restrictions are in place near schools for a reason - They protect our communities' children against possible injuries.

## DON'T BE A ZIGZAG SHARK



**PARK RESPONSIBLY  
KEEP SCHOOL  
ENTRANCES CLEAR**

## CHOOSE SAFE PARKING OVER CONVENIENCE AT ALL TIMES

Parking on yellow lines, double-parking, pavement parking, blocking driveways and ignoring school crossing patrols ALL place children at risk and are illegal!

Drivers and children need good visibility around schools to be able to see each other. Over staying time restriction limits defeats the purpose of 'sharing' parking around the school.

## STAY ON THE LEVEL



**PARKING ON PAVEMENTS OR VERGES CAUSES DANGERS FOR PEDESTRIANS**



# RNIB Winter Craft Fayre

Come along to our Winter Craft Fayre

Saturday 30 November 2013 10:00am – 2:00pm

Variety of handmade crafts on sale, including;

jewellery, knitted items, charcoal prints,  
gift bags, envelopes and bows, fudge, printed cards,  
African items and jewelled pieces

## Seasonal refreshments on sale

Want to join us on this great day?

No need to book, just turn up on the day

RNIB College Loughborough, Radmoor Road  
Loughborough, LE11 3BS



**RNIB** College Loughborough

Aspire • Learn • Achieve

handmade by students

## **Bradgate Flower Club**

Bradgate Flower Club's meeting on Wednesday 4th December celebrates 'My Christmas'. Our guest is the renowned demonstrator is Andrew Lloyd of Stourbridge, West Midlands. The meeting at Newtown Linford Village Hall (LE6 0AE) is open to visitors and members' guests - the entry fee is £5. Details from Lilian Coleman on 0116 2363191.

Bradgate Flower Club is supporting St. Peter's Church Flower Festival in Copt Oak (LE67 9QB) on 7th and 8th December. Entitled "How far is it to Bethlehem?". The Festival will be open between 10.30 and 4pm on both days. In addition to the floral displays, refreshments are available along with charity stalls and sales of plants, cards and chocolates. Entry £2, ample off-street parking.

**Geraldine Abbott**

## **The Wedding of Amy Salter to Christopher Browne.**



Amy Salter the daughter of Steve and Julie Salter (deceased) was married at Newtown Linford All Saints Church to Christopher Browne from Liverpool, on 19<sup>th</sup> October 2013. The Rev. Louise Corke officiated.

The happy couple held their reception at The Griffin, Swithland Village and went off on their honeymoon to Borneo and New Zealand.

Amy and Chris have made their home in Woolton, Liverpool and she is now a Senior Feature writer with Candis Magazine.

## OPERATION CHRISTMAS CHILD A HUGE SUCCESS AT GROBY COMMUNITY COLLEGE AGAIN!



Groby Community College students have been working together in year 10 Life skills classes to collect Christmas presents to send to children in poor countries around the world. Assistant Principal Mr Kimber said; **“The generosity of Groby students never fails to impress and we will have helped to make it a very**

**special Christmas for lots of little boys and girls who otherwise would not have received anything for Christmas”.** Special thanks to all who helped and Miss Wright for organising it.



## POPPY WALL

**This picture displays the texts and letters year 10 students at Groby Community College wrote to soldiers and veterans in honour of remembrance.**

**Miss Hammond –  
Teacher at Groby  
Community College**

## Brownie News

On Thursday 31st October, Newtown Linford Brownie Pack went to Bradgate Park to experience olden days. For example we went on a ghost tour and met lots of magical but true people e.g. Lady Jane Grey, 3 Witches, a monk and Old John.

We had an incredible time and we had lots of trick and treats.

I, as a Brownie loved it especially as Brownie night fell on Halloween. Hope to see you next year

**Anna Raynor**

**Age 10**

**Information on the Brownie Ghost Walk below.**

**Halloween**

6pm ~ 8pm **Ghost Walk**

@ Hunts Hill  
Bradgate Park

Spooky Stories

Campfire, Apple Bobbing  
& more!

www.woodlark.org.uk

Association with



## Cooks Farm Shop

Markfield Lane, Newtown Linford, Leics

LE6 0AB, [www.cooksfarmshop.co.uk](http://www.cooksfarmshop.co.uk)

01530 242214

*Top quality fruit & veg,*

Beef, Pork, Lamb, Chicken, Bacon,

Sausage,

Pate, Cold Meats, Pies etc

Clarks ready meals

*Fresh bread delivered Thurs, Fri*

*& Sat from a Small local bakery*

Milk - Cream - Butter - Cheese -

Yoghurts & soups

*Free Range Eggs and Duck Eggs*

Relishes, Pickles, Preserves

And

Lots More Good Things to Eat

Here at Cooks we stock over 50 varieties of Cat & Dog foods as well as feeds, treats, bedding & accessories for small animals & pets.

Plus much much more!

Feel free to come & browse.

Open -

Mon-Fri 9am-5.30pm

Sat 9am - 5pm

Sun 10am - 1pm



## THE POST OFFICE TEA ROOMS NEWTOWN LINFORD

We now make our own hand-made Truffles & Chocolates  
which can also be ordered and boxed

Special chocolates

550 Bradgate Road • 01530 242 709



## Geoff Baxter 1933 – 2013

Shirley would like to thank everyone who sent a card or expressed their condolences and all those who attended the memorial service. She says Geoff would always cherish their welcome to Newtown Linford thirty one years ago, making so many loving friends and neighbours, which continued throughout his life here. It all began at “The Heathers” Bradgate Road until the family flew the nest. Ten years later moving down into the village to the lovely ‘Olde Timbers’. The cottage meant so much to him, even though there were several arguments with the low beams! A graze on the head was a regular sight!



Geoff enjoyed participating in village life and was Village Hall Chairman for a number of years. He was also Village Hall Quiz Master for ten years which he took great pleasure in.

He was a member of the Village Boule Team. He took up Bowls which became the major part of his life. In 2011 he was appointed County Bowls President.

He enjoyed his village walks and always had something interesting to report on in reaching home.

Geoff was a very proud father, grandfather and recently welcomed a great granddaughter into the family.

### **DON'T BE ALONE ON CHRISTMAS DAY**

**Come and Join us at  
ST MARY'S CHURCH ROOMS, ANSTEY**

*For*

**DINNER AND FESTIVITIES  
TRANSPORT CAN BE ARRANGED**

*Free of charge*

**TO BOOK YOUR PLACE PLEASE RING  
01530 243445-Kerry Sharpe or 0116 2368811-Julie Ford**



S  
O  
L  
D

# Roy Green

*more* LETTING AND ESTATE AGENTS

SALE PROPERTIES *required*

TENANTS WAITING *for*

LETTING PROPERTIES

Tel: 0116 235 3009

**FREE E.P.C.** *with every listing*

L  
E  
T

## PAUL HARBY

Joiner / Handyman

## INTERIOR / EXTERIOR WORK

No job too small – Free  
Quotation – Design

275 Markfield Lane  
Markfield

01530 245 464  
07794 262 199



[paulrharby@yahoo.co.uk](mailto:paulrharby@yahoo.co.uk)

## LARGE PRINT COPIES

If you know anyone or you yourself would like to receive a large print copy of the Village Magazine please contact Anne and David Couling telephone 242452

## Many thanks to Newtown

### Linford School

for the use of their facilities to produce the large print magazine.

It is much appreciated

## **A Selection of items from the Village Records of 1981**

The records show that lots of things were happening in the Village during 1981. by the time we reached December there were lots of photos of snow which lasted quite a while. As I write this the weather men are forecasting snow for us.

In February "Old Charlie" the horse belonging to Bradgate Woods, Ulverscroft Lane died aged 45. We all knew him as the old horse in the field by the wood yard

It was the year of a Census so we were all busy filling in more forms in March

There was a change of Landlord at the Bradgate Pub. Mrs Irene Pollard retired after 13 years at the helm and in July her son Phil took over.

In May there was lots of digging in the Park. Severn Trent were clearing out the five pools in the main part of the river Lyn which had originally been dug in 1900 to stop the silt flowing into Cropston Reservoir. They discovered 8 to 10 feet of silt in 1981, which, when removed meant it was safer if children strayed onto the reed covered edges. The park staff were on hand to help save the brown trout and the crayfish when each pool was drained.

We accept water meters as the norm these days but it was in 1981 that Severn Trent Water Authority announced that meters were now available. Our claim to fame is that Mr Donald Maggs of Grey Crescent was the first person to collect his meter. He was hoping that once it was fitted his water bill would be reduced.

Lots was going on with the W.I. Early in the year the Members had an outing to the Massarella Stud. For the March meeting the speaker was Mr Robert Burnham an ex RAF flight engineer who explained to the audience how he was able to escape arrest when he was shot down over France in July 1944. Because he was wounded, he was taken to a safe house but could not be passed down the escape route. Instead he was looked after for 10 weeks until the British troops liberated him. The Members had a special day out in May to the Royal Mews and the Queen's Gallery at Buckingham Palace. Nearer to home Hilda Norton won the Silver Challenge cup for the cookery section at the Abbey Park show. The WI were on great form when the Roaring Twenties was the theme for the Annual Party. There are some good photos of the event.

### **More items about 1981 in the February magazine**



## Newtown Linford Neighbourhood Watch - A member of the Parish Council



Not too much to report this month as I sit here in the Florida sun. I will be back with you by the time you are reading this. You will recall that at the beginning of the year the Police implemented a new scheme for looking after our safety! It was headed by a Beacon Officer and covered a larger area. A good few weeks ago that Beacon Officer was put on the long term sick suffering from stress. Obviously not caused by anything happening in our Village as we are very lucky crime wise. Our new Beacon Officer is P.C. Leye Price. (female) and yes I have spelt her name correctly. Sgt. Andy Moscrop has finally heeded the requests from our Parish Council Chair, Ken to come and explain the new set up more clearly and he has just informed me he will be coming along to the November meeting together with Leye to introduce her. Typical. I am out of the Country.

A few things worth mentioning are:-

Two residents reported a male on a pedal bike in the Main Street behaving strangely.

NHW national reminds us that as Christmas is coming you must be careful about buying things on line. Always make sure you are on a safe site i.e. the address is highlighted in green.

The warning about the PDS parcel scam is going round again. This goes back many years and the scam was closed at that time so it is it not likely to occur again. So do not bother to forward the warning on to your friends.

In August several village residents lost their entire computer contents and some had to purchase new computers. So remember if you received an email even from someone you know and it only contains a hyperlink in the middle of the page - do not open it. Delete it immediately. The emails going out from people's contacts list in their computers is still going strong. If the subject says things like bad trip - do not open it even if you do know the sender.



**Pam A McMorran**

# Broughtons

Period Home Accessories Since 1888

*Greetings of the Season and Best Wishes for the New Year*

Period Furniture . Mirrors . Lighting . Ironmongery . Stoves

Fireside Tools . Switches & Sockets

Oak Doors & Flooring . Garden Furniture

Also

Traditional Gifts & Home Accessories

*Luxury Coffee Lounge*

Serving Home Made Cakes & Light Lunches

*Open 7 Days Mon-Sat 9-5 Sundays 10-4*

The Old Cinema, 69-75 Cropston Road, Anstey, LE7 7BP

[www.broughtons.com](http://www.broughtons.com) [sales@broughtons.com](mailto:sales@broughtons.com) Tel. 0116 236 5300

## PEST CONTROL

DOMESTIC • COMMERCIAL • INDUSTRIAL



**Guaranteed Service  
No Add On Charges**

Wasps \* Fleas \* Ants Rodents  
Bird Control \* Fly Killers \* Fly Screens \*  
Pet Screens \* Feminine Hygiene

FOR A FAST, RELIABLE RESPONSE

**CALL FREE ON**

**0116 234 0078**

**Target**

creating a pest-free environment

[www.targetpestcontrol.co.uk](http://www.targetpestcontrol.co.uk) | [info@targetpestcontrol.co.uk](mailto:info@targetpestcontrol.co.uk)

## Notes From A Hospital Bed

Some of you may have been wondering why you haven't seen me in the Church for a while. Unfortunately, due to kidney failure I haven't been in the best of health for the last 18 months. Since March of last year I have become a regular visitor to the Leicester General renal department. Having started peritoneal dialysis in November I had hoped things might improve but little did I know what was in store for this year. Well it all started back in June when I caught the renal patient's dreaded infection – peritonitis. This put me in hospital for a few days whilst I was treated with an antibiotic before being released to go home. Little did I know what that antibiotic was going to do to me!

Very soon I was feeling unwell, developed a rash and a blood pressure so low it couldn't be read! So it was a nice little ride in the back of an Ambulance to the Leicester Royal - actually due to the road works on Lutterworth Road it wasn't quite such a little ride. Almost overnight the rash developed into a bright orange colour which covered my body – you might have been excused for mistaking me for the fat, bald orange man in the Tango adverts. Unfortunately, this was only the start and for a few weeks I was seriously ill.

For the past 12 weeks I've been playing a game I call NHS Snakes and Ladders which works this way. Doctors find all sorts of things wrong which polite company forbids me to list. I move along the board as Doctors cure one symptom only for me to land on a snake when another problem arises and back we go again. And so it carries on. However, at last all the effects of the antibiotic had gone and I thought I was on the long ladder heading towards square 100 when ... disaster struck. After weeks of lying down and the debilitating effect of the antibiotic I could neither stand or walk – big snake back to square 1!

It was arranged for me to go to a Community Hospital for evaluation and physiotherapy and it seemed I was moving forward again, But as usual the snake made its presence known as peritonitis struck again. Still at least I had a nice ride out to Market Harborough one day and then back to the General the next! I'm now working on my exercises and should be going back to the community hospital soon. Hopefully by the time you read this I may even have reached square 100 and escaped.

It has been a long summer. I have missed out on all the things we had planned to do. However, I have achieved something – I have grown a beard! This has sparked controversy between those who like it (our children) and those who don't (Mary)! When I finally get out I will keep it for a while – you never know I may be offered a job as Santa!

Postscript since writing Notes from a hospital bed David went to the Hinckley community hospital for 2 days before being sent back to the General with a chest infection. Then back to the Hinckley where he managed to have 3 weeks of physio and was starting to improve before contracting peritonitis again. He is currently back in the General whilst they treat the Peritonitis and then ... who knows? We are still hopeful that he will be home at the beginning of December.

## **NEWTOWN LINFORD PARISH COUNCIL**

Photo Glenis Meredith

### **Police and Neighbourhood**

**Watch:** At the Parish Council meeting on Monday 18th November 2014 we welcomed Police Sergeant Andy Moscrop and Police Constable Leye (pronounced Lee) Price. She is our new Beacon Officer. PS Moscrop assured us that despite major cuts, mainly achieved by selling capital assets



and reducing civilian staff, fewer crimes and safer neighbourhoods remain the main aims of the Police Force. Time is being saved by using state-of-the art technology in their vehicles obviating lengthy written reports. The Force continues to work with partner organisations like the Borough and County Councils. A drop in crime of 20% this year is similar to that at this time last year. The Sunday School will continue to be used by Police Community Support Officer Steve Quinn, who is always happy to discuss problems with residents. He will also be the officer most likely to attend our Parish Council meetings. By the time you read this Mrs. Pam McMorran, our Neighbourhood Watch Co-ordinator will be back to deal with any outstanding problems.

**Trees in the Conservation Area and elsewhere in the village:** Just a reminder: You require planning permission from Charnwood Borough Council if you propose to do any treework in the Conservation Area. Even if you are not in the Conservation Area it is always useful to seek advice before removing a tree. Dr. Lowe, one of our Parish Councillors, who is also our local Tree Warden is always glad to help. His phone no. is 01530 242126. He recently attended a seminar organised by the OPAL Research Group. In one of their leaflets they say: “Trees are vital. They combat climate change by capturing and storing carbon and act to reduce the impact of flooding and soil erosion. They provide income and support jobs through timber production and tourism. They are vital to wildlife too and provide a home and food for birds, insects and mammals. **In short, trees are good for our wealth, health and happiness, now and in the future.**” If you would like leaflets, or ways of joining them as a member, please let me know.

**Planning:** Because of time constraints it is not possible to list planning applications in the Magazine, but it is possible for you to access them either by going straight to Charnwood’s Planning Explorer, or by going to our website [www.newtownlinford.org.uk](http://www.newtownlinford.org.uk) and use the link for Planning.

**Bradgate Park Trust:** Peter Tyldesley, the Park Land Agent, also attended our meeting. We were very pleased to hear of his plans for this winter and indeed for next summer. He is writing in this Magazine himself this month, so there is no need for me to repeat the delights in store. The links he has already forged within the Village are most welcome.

The next Parish Council will be on Monday 16th December 2013 at 7 pm in the small hall of the Village Hall. We always welcome visitors.

Can I also on behalf of the Parish Council wish all residents a Happy Christmas and a healthy and prosperous New Year

Lydia Knott, Clerk to the Council: 01530 242522; e: [lydia.knott@hotmail.co.uk](mailto:lydia.knott@hotmail.co.uk); website: [www.newtownlinford.org.uk](http://www.newtownlinford.org.uk)







# P WHITWORTH

## Building Contractor

Established for over 25 years



**High quality craftsmanship assured.  
From Planning to completion.  
Specialising in traditional materials.  
All Work guaranteed, references available.  
For a free, no obligation consultation.  
Telephone Peter Whitworth on:  
07973 841 655**



Mark  
Chadwick



---

P~L~A~S~T~E~R~E~R

---

High quality plasterer with  
25 years experience  
Competitive rates.  
All jobs considered.

**For a free quote:-**

**Telephone: 0116 2861057/Mobile:  
07971 978 098**

**Email: [markchadwick@hotmail.co.uk](mailto:markchadwick@hotmail.co.uk)**

41

PRIVATE AND  
COMMERCIAL

INTERIOR / EXTERIOR

**A.B. SHERRIFF**

Established 1988

**PAINTER &  
DECORATOR**

42 BRADGATE DRIVE  
WIGSTON, LEICESTER

**Telephone 0116 288 1048  
Mobile: 07719 366 569**



## **Booking of Village Facilities**

**To book the Village  
Hall (Residents only)**  
call Pat Wood on  
242251.

**To book the Sunday  
School Room £10 per  
hour, £15 for two  
hours, £20 for 3 hours,  
£45 per day**  
call Casey Pearson on  
249259

## **Foot Problems ?**

**Corns, Calluses, Veruccae, Hard Skin, Nail  
Problems, Athlete's foot,  
Sore and Cracked Heels.**

**Have them treated  
Professionally in the comfort of  
your own home**

Ring **Alistair Watt** MCFHP.MAFHP.  
**Foot Health Specialist**



**Tel 01530 243009  
or 07802 777221 .**

**Evenings and weekends  
available**

**Service with a smile -**



## **Contributions to Village Magazine**

Can we have your contributions for the **February 2014** issue by **15th January 2014** please. **Send to the Editor, Carole Heubeck, 5 Grey Crescent, Newtown Linford (01530 244790).**

**E-mail [heubeck111@btinternet.com](mailto:heubeck111@btinternet.com) & [heubecks@googlemail.com](mailto:heubecks@googlemail.com)**

**Please could you send any emails to the above email addresses. If you do not receive an acknowledgement of your email - please contact Carole, the Editor direct on the above number to check we have received it.**

The opinions expressed by the contributors are not necessarily those of the Editors and they reserve the right to amend, shorten or not print any article or advertisement submitted for publication. Whilst every effort has been made to ensure the accuracy of the information printed in this magazine, and advertisements are accepted in good faith, no liability can be accepted for loss, damage or claim of any kind incurred by the reader