

# **ISSUE NUMBER 106**

## **CONTENTS**

### **July/August 2013**

<b>Church News</b>	<b>3/4, 22/25</b>
<b>Village Diary</b>	<b>5</b>
<b>Scarecrow Festival</b>	<b>6/7</b>
<b>Gardening Club</b>	<b>8/11</b>
<b>Flower Club</b>	<b>12</b>
<b>Ramblers</b>	<b>12/13</b>
<b>Primary School</b>	<b>15/17</b>
<b>Youth Club</b>	<b>19</b>
<b>Bradgate Park</b>	<b>20/21</b>
<b>Cricket Fixtures</b>	<b>28</b>
<b>Neighbourhood Watch</b>	<b>31</b>
<b>From the Records</b>	<b>33</b>
<b>Brookvale High School</b>	<b>34</b>
<b>Brownies</b>	<b>35</b>
<b>40th Leicester Scout Group</b>	<b>38</b>
<b>Parish Council</b>	<b>40</b>

# pre-printed adverts

# The Bradgate Team Parish

In the week I'm writing this, I've been in contact with a good number of people who feel completely out of control. Circumstances, health, actions and outcomes have all left them feeling thwarted or powerless to sort out their lives and as a result they are struggling with the situations on the outside and the feelings on the inside. What can I do to help? What can any of us do? Is praying for someone enough?

Below is a quote which I read a little while ago on the website [sacredspace.ie](http://sacredspace.ie)

*I went to study eleven years ago, a very angry person. The anger was because of a perceived absence of God in the suffering of people I have known and loved. I hoped that through study my problem might be resolved. So I spent ten years in part-time study, listening and reading and writing. Just as I was finishing an MA in Biblical Studies and about to write a thesis on 'Suffering in the Book of Job', cancer attacked me and put an end to all that. Thus, as it turned out, the last essay I wrote was on Mark's account of the prayer of Jesus in Gethsemane.*

*The night before the operation was spent in an Accident & Emergency ward. It was possibly the worst experience of my life. I was alone and terrified. There was the operation ahead, the possibility that I might not come out the other side of it, and there was no escape. Then suddenly I was in the garden of Gethsemane and there was a Presence, a very powerful Presence, beside me, which lifted and supported me firmly and gently. It was not a cosy, consoling Presence but one which sustained me and gave me courage and assurance that no matter what the outcome, all would be well. That Presence was still with me when I came to, after the operation. It is important to stress that during this episode, countless people were praying for me.*

*I am well now. I have had radiotherapy but my body refused chemotherapy. The experience of that Presence remains with me, and I now know that God is with us always but most particularly in the dreary, dark moments when there is nothing else.*

*So, you see, I have had the answer to my furious questions, not through reading, listening and writing, but through a personal experience which I would never have chosen, and indeed never expected.*



'...countless people were praying for me...' I don't know who the author is, but it is the encouragement we need to continue to pray for those we know in difficult circumstances. Praying for someone isn't just a matter of naming them (though that is a start, for sure!) but keeping them with you in God's presence, working through some of the details they face and praying specifically for the Lord's work in those details. It does make a difference; God sometimes moves dramatically, sometimes gently, often patiently, and when I hear the stories of change in people's lives it is immensely encouraging.

The days are long at the moment; take a chair out into the garden, and be still for a little while, read a bit of the Bible and remind yourself that God is God and pray for someone. It could make an enormous difference to them.

*Louise Corke*



**P WHITWORTH**  
Building Contractor

Established for over 25 years



**High quality craftsmanship assured.  
From Planning to completion.  
Specialising in traditional materials.  
All Work guaranteed, references available.  
For a free, no obligation consultation.  
Telephone Peter Whitworth on:  
07973 841 655**

## VILLAGE DIARY

### July 2013

28th June - 1st July, Flower Festival Loughborough Baptist Church  
6th Ramblers Day Walk  
15th Parish Council meeting  
16th Ramblers  
28th National Gardening Scheme see pg 10

### August 2013

4th National Gardening Scheme see pg 10  
7th Bradgate Flower Club  
10th Ramblers  
19th Parish Council meeting

### September 2013

28th/29th Scarecrow Weekend  
29th Harvest Festival



### Regular events

Monday afternoon	Mature Movers fitness class V. Hall
Mondays 8pm at the Church	Bell Ringing
1st Monday of the month	Youth Club
4th Tuesday of the month	Gardening Club
1st Wednesday of the month	Flower Club
3rd Wednesday of the month	Ladies Luncheon Club
Thursdays am during school term	Toddlers Group
Thursdays eve during school term	Brownies
Thursday Evenings	Badminton
3rd Thursday	Gentlemen's Lunch Club





**Newtown Linford**  
**Scarecrow Festival**

28th & 29th September 2013

**28th September**  
**School Fete and Teas**

Church open  
Bell Ringing

**29th September**  
**Harvest Festival in Church**  
**Village Hall**

Will have refreshments, stalls  
and other activities  
and announcement of the  
Winners in each category.



# Newtown Linford Scarecrow Festival

28th/29th September 2013



Believe it or not it will soon be time to root out those old clothes, straw and assorted construction materials and create your own personal temporary sculpture i.e. a scarecrow. Our Scarecrow Festival is once again taking place on the Harvest Festival weekend 28th/29th September and the sunshine has been ordered....

Let your imagination run riot, from miniature to major constructions, from rustic to high-tec - all creations are most warmly invited.

## With categories for:-

- Under 10s
- 10-18's
- Adults
- Groups
- The Peoples Choice

You could get a coveted certificate and even a prize (sweets offered to all children's' entries!)



Entry forms will be available from the Village Shop (old Post Office) from early September with a deadline for entries of 12 noon Friday 27th (so we can get you in the programme - phone me if time is getting tight!). You can, of course, display a scarecrow without entering the competition - it all adds to the atmosphere around the village.

Teas will be available in the School on Saturday afternoon, when the School will also be holding its Fete. The Church will be open and the Bell ringers busy!

The Village Hall will be open for teas on the Sunday afternoon and there will be a number of stalls, including plants and bulbs, jewellery and cards and other activities e.g. face-painting etc (as in previous years) and a chance to see the hard work being put into the Village Collage. LOROS will be there with lottery and scratch cards and you could win up to £1000 on the cards or even more on the lottery !

If there are any other local Clubs or small commercial enterprises who would like a table please contact me on 01530 243119.

## Newtown Linford Gardening Club

At last we have all the colour in the garden which we expect in the Spring. The beautiful azalea in the photo is the centrepiece of the lovely garden belonging to John and Betty Patrick on Markfield Lane. The azalea was planted around 50 years ago!!!

We heard a fascinating talk on climbing plants from Hilary Hutson who came down from Sheffield to visit our Club last month. We discovered that some plants lean on others for support, other plants twist themselves around, some curling clockwise and others anti-clockwise, and some plants exude their own version of superglue to secure a hold against a tree, a fence or a wall. As well as the trusty favourites of clematis, honeysuckle and ivy we were introduced to a wide range of climbers. Many were new to our members, especially a group which could be termed dwarf climbers which would suit a pot on a patio or on an obelisk in a border. We also saw the results which occur if a plant is just left to ramble, with some dominating an area like a pernicious weed.

July and August see us spending our time outside. Our traditional Summer Garden Party will again be held at Mike and Liz Newcombe's lovely garden which overlooks woods and fields and is currently featured in the National Garden Scheme Booklet.

In August we visit Ashwood Nurseries in South Staffordshire and its next door neighbour, John's Garden, which contains many interesting plants including a wide range of more unusual ones, some of which we should be able to buy at the nursery.

The visit of Christine Walkden on 22<sup>nd</sup> October continues to generate a lot of interest. Around 80% of the tickets have already gone and only 30 or so remain. We are being joined by members of other Gardening Clubs and by members of the public who want to hear this effusive TV gardening celebrity speak. If you want any of these last remaining tickets they cost £10 or else you can become members of the Club for the year for £12. Just contact the Secretary (tel. 242452 or e-mail [01530242452@talktalk.net](mailto:01530242452@talktalk.net)), or come to one of our Meetings to see how you like it before making a commitment (£2 for visitors). Alternatively give us a ring and ask for a copy of our programme for the coming year and we will be pleased to send one to you.





# PEST CONTROL

DOMESTIC • COMMERCIAL • INDUSTRIAL



**Guaranteed Service  
No Add On Charges**

**Wasps \* Fleas \* Ants Rodents  
Bird Control \* Fly Killers \* Fly Screens \*  
Pet Screens \* Feminine Hygiene**

**FOR A FAST, RELIABLE RESPONSE**

## 0116 234 0078



[www.targetpestcontrol.co.uk](http://www.targetpestcontrol.co.uk) | [info@targetpestcontrol.co.uk](mailto:info@targetpestcontrol.co.uk)

A local garden has been accepted by the National Gardens Scheme and will open for the first time this summer to raise money for charity.

Mike & Liz Newcombe's garden, situated halfway along Ulverscroft Lane between Newtown Linford and Ulverscroft, will be open this summer on consecutive Sundays - 28<sup>th</sup> July and 4<sup>th</sup> August – 11.00am – 5.00pm.

They will also, for the second time, provide the venue for the Newtown Linford Gardening Club's Summer Party on Tuesday 23<sup>rd</sup> July.

This 2-acre SW facing garden has beautiful views across Charnwood country-

side. Near the house are patios, water features, flower and shrub beds, fruit trees, green-houses and vegetable plots. Lawns then slope down to a gravel



garden, a large wildlife pond with waterfall and three small areas of woodland, with pleasant walks through many species of trees. The lower two thirds of this garden has been created since 2004, with over 150 conifers and deciduous trees planted. There are several places to sit and relax around the garden.

There will be a plant stall and a craft stall, selling jewellery, scarves etc. Light refreshments will be available.

Admission for adults is £3.50, children are free and dogs on leads are welcome. The full address is – 'Mountain Ash', 140 Ulverscroft Lane, Newtown Linford, LE6 0AJ.

For further details and some photographs of the garden see the NGS website – [www.ngs.org.uk](http://www.ngs.org.uk) –

Amongst the many charities supported by the NGS are Macmillan Cancer Support, Marie Curie Cancer Care, Help the Hospices, Carers Trust and, this year, Parkinsons UK.

## Doves and Cats



I am looking for the owner of a cat that unfortunately is eating my doves.

It has been seen carrying them off which leaves deserted eggs and unfed babies. Hopefully I can buy the cat a collar and put one of my large cat bells on it.

My four cats wear them but in any event do not catch the doves so the doves are not wary of cats. It is a creamy sort of white with a black tail and black markings on its head and body. As I write this it is hunting mice in the field opposite as I have not let the doves out.

Pam on 01530 242140 –  
[pam@riverlyn.freeserve.co.uk](mailto:pam@riverlyn.freeserve.co.uk)





# COVERING *Martin Page* YOUR LOCAL The Newtown Linford Area \* **Tree** \*

**Surgeon**

*Have you considered your trees may need some maintenance from time to time. Are your trees maybe too tall blocking light, unsafe or untidy? Or maybe you need to remove that stubborn stump. Do your hedges, Conifers or shrubs need trimming. With 30 years of experience working with trees in your area, I would be pleased to offer you free advise and a free quotation.*

**I also sell high quality firewood logs**

*call me now on*

**01530 251312**  
Consistently Recommended





- Fully Insured
- Local family business
- Clean & tidy service



## **Bradgate Flower Club**

There is no meeting in July for Bradgate Flower Club, so I attach details of the next event at the start of August. Looking further ahead, I have been asked to give advance publicity for a Bridge Evening in October. However, this may be rather soon for your schedule of events but we can remind you nearer the time.

After a summer break in July, Bradgate Flower Club meets next on Wednesday 7th August at 7.30. Club members have been invited to demonstrate their interpretation of the theme "Inspired by Gertrude Jekyll". This will follow a short presentation on the work of the celebrated plantswoman and garden designer. The demonstration will be held in Newtown Linford Village Hall (LE6 0AE). Visitors are welcome - a charge of £5 is made. Details from Lilian Coleman on 0116 2363191.

Bradgate Flower Club is holding a Bridge Drive on Thursday 17 October in Newtown Linford Village Hall, starting at 1.30 for 1.45pm. If you would like to book a table, contact Sue Howard on 01530 245373. The fee is £6 per person including afternoon tea. A donation will be made to 'Canine Partners'



## **Village Ramblers 2013**

**MEET:** Opposite the Village Hall, to depart at 2pm, unless stated otherwise.

**13th July** Join Cathedral Walkers (see below) Billesdon and Noseley Chapel.

**16th July** Tuesday. Glenis & John day walk in Monsal Head, Derbyshire. Meet at 09:30. 01530 242897

**10th August** Iris Sayer 243822.

**September 14th** Peter and Carolyn Lowe 242877

## **Leicester Cathedral Walking Group Saturday 13th July**

After our most excellent visit to Tickencote, I am now looking forward to visiting Noseley Chapel, the private chapel to Noseley Hall on **Saturday 13 July 2013**. Please note that Noseley Chapel is a private Chapel not usually open to the public. We will be visiting by the kind permission of Lord Hazlerigg. Noseley Estate has been on the market for sale and future access to the Chapel cannot be guaranteed, so this really is an opportunity not to be missed.

As usual, we will meet at the local pub, the Fox and Hounds at Tugby at 12.00 noon, then visit the Chapel at 1.30pm followed by a short walk over the Noseley Hall estate. The Fox and Hounds is a delightful little pub but it can only seat 36 people for meals. Please book with me asap.

Noseley Chapel is a special place, not only is it a beautiful building and been a place of worship for nearly a thousand a years, it is also a rare example of a family chapel that has survived for over 600 years To book in or for further details, a copy of the information document or to add your name to the 'Future Walks List', please contact Mick McQuade on 0116 231 3298, or by email to [mick.mcquade@ntlworld.com](mailto:mick.mcquade@ntlworld.com).

## **Day Walk Tuesday 6th July**

The walk is 6-7 miles, fairly flat. We shall go along the Monsal Trail to Litton Dale, and visit the re-opened railway tunnels.

Please let Glenis know if you are coming. Transport is in shared cars,

Walks are usually between 3-4 miles. Please wear proper walking shoes or boots .

ANY QUERIES: Ring the walk leader or email [glenis72meredith73@gmail.com](mailto:glenis72meredith73@gmail.com)

*Well-behaved dogs only are welcome . To be under the close supervision of the owner, and to be on the lead where there is livestock or nesting birds. Please check with the leader that dogs are allowed across any access land. Disclaimer. Members are reminded that participation in walks is at their own risk, and that the leader(s) accepts no liability for any loss or injury, however caused.*

**E.W. Goddard  
& Sons**

(Established 1970)

**QUALIFIED PLUMBERS  
Bathroom and Tiling  
Specialists**

**All Building Work  
and Renovation**

\*\*\*\*\*

305 Markfield Lane  
Markfield LE67 9PR

**Telephone**

**01530 245316 or 0116 2311672  
07961 319908 or 07961 319907**

**Peter Henton**

**Domestic Appliance  
Repairs**

**Ex Zanussi Senior Engineer**

**Tel 0116 2896529**

**Mobile**

**07711 265414**

**Paint Wizard**

**Proprietor Paul Beaver, Grey Crescent, Newtown Linford**

**Working for You—All types of smart repairs including:**

**Panel Resprays from £165**

**Bumper Corner Repairs from £75**

**Colour Restoration From £65**

**Windscreen Repairs From £35**

**Alloy Wheel Refurbishment from £45**

**Leather & Trim Repairs from £65**

**Free Collection & Delivery Service Available**

**All prices are plus VAT charged at the prevailing rate**

**07850 456696**



## Newtown Linford Primary School



The last half term of the Summer Term is always an exciting one, mixed with a twinge of sadness, as children prepare to move on to the next stage of their academic career.

The children are busy working hard on their end of year production of Ocean Commotion. This is one of the real joys of working within a small School, seeing the children all working together regardless of their age. All of our children who auditioned for a part have received one and are showing such dedication, passion and drive. I know all parents and friends share their anticipation of being entertained to a very high standard. I look forward to sharing with you photos and a review in future issues.

The School is enjoying working with other community groups at the moment to offer further opportunities



for our children. I would like to take this opportunity to thank Newtown Linford Cricket Club for once again letting us use their grounds to hold our Sports Day. This is always an afternoon of great fun shared again with family and friends. Our children have the opportunity to work together in groups of mixed ages to gain points for their team as well as compete in individual races against children of their own age and gender. We feel it is very important to provide opportunities to develop skills of co-operation as well as individual competitiveness. We are also looking forward to coaches from the Club coming to teach our children cricket skills both this term and into next academic year.

You may have noticed, when walking in Bradgate Park, pink permits in the front screens of cars. These are our new parking permits. Peter Tyldesley (Land Agent at Bradgate Park) and I met to discuss how our School could take further advantage of such a beautiful natural resource on our doorstep. As well as discussing future educational activities we are looking forward to carrying out there,

15 it was also agreed to introduce these permits. This was a suggestion that was made at our recent Parent Forum meeting and Peter has very kindly

agreed to allow parents to park there during school drop off and pick up. This helps to solve some of the parking issues that I am keen to address around School during these times and also encourages children to walk that little further at the start and end of the school day. Those of you who know me well won't be surprised that these permits are pink!

Our oldest children in school in Y4/5/6 have been learning how to play a brass musical instrument all year. School, in partnership with Leicester-Shire Music Schools Service, have paid for the children to have free lessons and loan of an instrument for the year. The children have worked very hard and successfully since performing Jingle Bells in our Christmas Church Service after only 6 lessons! They are currently working with Viva Sinfonia to produce an improvised piece which they will be performing at De Montfort Hall with four other Leicester-



shire schools as part of The Chairman of the County Council's Concert! This is a real honour to be part of such an event and one that the school feels is very important. We are keen to provide all our children with a wide range of opportunities to help them find those things where they

are truly talented. Those children who will be remaining with us next year have the opportunity to continue these lessons again next year at a highly discounted price and again with free instrument hire. All schools now have to provide children with the free opportunity to learn an instrument for at least one term whilst they are in KS2 and we are proud to be able to offer this for a full year.

Numbers continue to increase at our School, but we still manage to maintain our friendly, caring atmosphere and small class sizes. Whilst high numbers of children live within our catchment area we are increasingly the School of choice for many families out of our catchment area.



I think this is reflection of our special nature but





also the balance we provide between a nurturing atmosphere and proudly achieving high levels of both progress and attainment. Many families have visited our School recently and commented on its special atmosphere and I welcome you to visit us if you have a child who is nearing school age to see what we offer.

I have now been working at Newtown Linford Primary School for 16 months and I can't believe how quickly time has gone. I am proud to be Headteacher at such a unique School in the local area and the successes we have achieved. We have a new website and I welcome you to have a look at some of the exciting things that have been taking place.

[www.newtownlinford.leics.sch.uk](http://www.newtownlinford.leics.sch.uk)

**Mrs C Chorlton, Headteacher**

**LEICESTER HOST LIONS CLUB**

**SUMMER FAIR**

**SUNDAY 4 AUGUST 2013**

**11.00AM - 3.00PM**

**AT 34 THE RIDGEWAY, ROTHLEY, LEICS**

**Variety of Stalls, Refreshments,**

**Music by: Hiss & Boo Band**

**Admission £2.00**

**Children £1.00**

# KEITH SMITH (ANSTEY) LTD EURONICS

6 STADON ROAD ANSTEY LE7 7AY - TEL: 0116 2362395 - sales@keithsmithltd.co.uk

## FAST FREE LOCAL DELIVERY



### ZANUSSI

#### ZWG7120K

Washing Machine

- ✓ 1200rpm Spin Speed
- ✓ 6kg Load Capacity
- ✓ 30min Quick Wash
- ✓ 16 Programmes
- ✓ A+AB Rated

Now Only **£249.99**



### HOTPOINT

#### DHS53XS

Built-In Double Oven

- ✓ 5 Programmes
- ✓ Lights in Both Ovens
- ✓ Double Glazed Doors
- ✓ Stainless Steel
- ✓ A Rated

Now Only **£449.99**

Save **£50**



### HOTPOINT

#### WMEF742P

Washing Machine

- ✓ 1400rpm Spin Speed
- ✓ 7kg Load Capacity
- ✓ Time Delay
- ✓ Quick Wash
- ✓ A++AB Rated

Now Only **£329.99**

Save **£60**



### SIEMENS

#### WM14E460GB

Washing Machine

- ✓ 1400rpm Spin Speed
- ✓ 7Kg Load Capacity
- ✓ 15 Min Rapid Wash
- ✓ A++AB Rated
- ✓ 5 Year Guarantee

Now Only **£499.99**



### BOSCH

#### SMS50T02GB

Dishwasher

- ✓ 12 Place Settings
- ✓ 5 Programmes
- ✓ Half Load
- ✓ Noise Level 50db
- ✓ A+AA Rated

Now Only **£279.99**

2 years guarantee



### HOOVER

#### AHD148V

Washing Machine

- ✓ 1400rpm Spin Speed
- ✓ 8kg Load Capacity
- ✓ A+AA Rated
- ✓ Time Delay
- ✓ 3 Year Guarantee

Now Only **£299.99**

### Fitted Kitchens

We are pleased to announce that we are now agents for **A.W.E Kitchens and Bedrooms** Who specialise in **Bespoke made to measure kitchen & bedroom furniture**

Please call in for further details

### Free Professional Installation

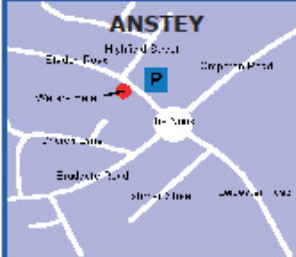
(worth £29.99)\*\*

### Free Removal of Old Appliance

(worth £14.00)

### Free Removal of Packaging

\*\*To Existing Fittings



## Newtown Linford Youth Club

This month's Youth Club was an American football night with my Uncle Richard.

We tried on the helmets which were really heavy and practiced throwing the ball. We then did some warm ups which proper American footballers do before their games.

At the end of the night we all tried kicking the ball over the goals. It was a great night at the playing field and with over 20 children coming along.

**Anna May Raynor aged 9 1/2**



## Old Trees and a Young Queen



It was 60 years ago that Queen Elizabeth II was crowned and the anniversary of her Coronation was marked in June with a service in Westminster Abbey, bringing to a conclusion the Diamond Jubilee celebrations of 2012.

This year marks another significant Royal Anniversary, certainly so far as Bradgate is concerned, being 460 years since Lady Jane Grey's brief and tragic reign for nine days in 1553.

In June 1553 as Edward VI lay dying, he changed his will in order to alter the succession away from his Catholic half-sister Mary and named his second cousin, the Protestant Jane, whose grandmother, Mary, was the younger sister of Henry VIII, as his heir. The young king died on 6<sup>th</sup> July 1553 and three days later, on 9<sup>th</sup> July, the studious daughter of Sir John Grey, Duke of Suffolk was informed that she was now Queen.

On 14<sup>th</sup> July, Jane's father-in-law John Dudley, Duke of Northumberland, in whose drive for power she had become an unwitting pawn, set out with his troops in order to prevent Mary Tudor from assembling an army to march on London. However, in his absence, the Privy Council switched allegiance to Mary and she was proclaimed Queen on 19<sup>th</sup> July. The Duke was executed on 22<sup>nd</sup> August and Jane, imprisoned in the Tower of London, suffered the same fate the following February.

One of the enduring legends associated with Jane's execution is that, on the day of her death, the woodsmen at Bradgate symbolically "beheaded" many of the oak trees on the Park as a form of commemoration. Whether or not the story is true we shall never know but the fact that there are polarded oak trees at Bradgate that are old enough to have been standing in 1553 gives the myth that possibility that it could be true, that is essential for all good folk tales.

The veteran oak trees of Bradgate are some of the Park's most famous landmarks with the oldest one having been dated as being over 850 years old. Together with their ancient sweet chestnut counterparts these gnarled specimens are a living legacy from Bradgate's medieval past. As well as being wonderful historic specimens in their own right, these trees are home to a vast range of fungi, insects and other species. Conservationist and author Oliver Rackham gave some idea of their value when he wrote: *'10,000 oaks of 100 years old are not a substitute for one 500 year old oak'*.

20 However, our old trees are in trouble. The passage of time and the

eventual death of even the hardiest of veterans can be predicted and the Trust has a policy of planting sufficient trees to ensure that the next generation of ancient trees is established in good time. Unfortunately, the arrival of disease is not so easy to predict and there are now a number that threaten the Park's landscape with unwanted change.

The arrival of *Chalara Fraxinea* or Ash Dieback Disease has been well documented. Less well publicised, but far more dangerous for Bradgate, are the various forms of Oak Decline and Sweet Chestnut Blight. There is little we can do but keep a careful watch on our trees and do everything that we can in order to give them the best possible chance of remaining in good health. One thing that visitors will notice is the fact that we will be erecting fences around some of the veteran trees that will be noticeably larger than the usual tree frames used to prevent damage by deer. The fences are intended to keep people away from the bases of the trees in order to prevent further compaction of the ground, which puts the root systems under stress. In situations where the trees are on level ground, we will be experimenting with mulching the soil around the base of the tree in order to stimulate the action of earthworms in opening up the soil structure.

Yet another disease in what sometimes seems like an endless onslaught is *Phytophthora*, a fungal disease which particularly affects alders. There are a number of alder trees along the bank of the River Lin that have succumbed and the only thing to do is remove them.

We are hosting a visit in July from members of the Ancient Tree Forum as part of our continued efforts to understand more about the needs of our veteran trees and how we can learn from best practice in other parts of the country in order to care for them in the best possible way in the future. In the meantime, our Rangers are always pleased to hear from members of the public who have spotted signs of a tree in trouble. The Woodland Trust are running a campaign to make people more aware of veteran trees and the threats that they face, details of which can be found on their website <http://www.woodlandtrust.org.uk>



## BRADGATE TEAM SUNDAY SERVICES—July 2013

DATE	GROBY	RATBY	NEWTOWN LINFORD
7th July	8.00am Holy Communion (PH)		
6th after Trinity	9.30am Family Service (KW)	10.00am Worship for All (PH)	10.30am Holy Communion (LC)
	6.30pm Holy Communion (LC)	6.00pm Holy Communion (PH)	
14th July		8.00am Holy Communion (LC)	8.00am Holy Communion (PH)
7th after Trinity	9.30am Holy Communion (LC)	10.00am Morning Prayer (PH)	10.30am Family Service (KW)
	6.30pm Evening Prayer (PH)		
21st July	8.00am Holy Communion (LC)		
8th after Trinity	9.30am Holy Communion (HH)	10.00am Holy Communion (LC)	10.30am Holy Communion (JW)
	6.30pm 3SE		
28th July			8.00am Holy Communion (FB)
9th after Trinity	9.30am Holy Communion (LC)	10.00am Holy Communion (FB)	10.30am Morning Prayer (MS)
	6.30pm Evening Prayer (LC)		

### MIDWEEK COMMUNION SERVICES—July

<b>NEWTOWN LINFORD</b>	Thur	10am	4th
<b>GROBY</b>	Wed	9.30am	3rd, 10th, 17th, 24th & 31st
<b>RATBY</b>	Thur	9.30am	11th and 25th

## BRADGATE TEAM SUNDAY SERVICES—August 2013

DATE	GROBY	RATBY	NEWTOWN LINFORD
4th August  Transfiguration	8.00am Holy Communion (LC)		
	9.30am Family Service (LC)	10.00am Worship for All (KW)	10.30am Holy Communion (FB)
	6.30pm Holy Communion (LC)	6.00pm Holy Communion (FB)	
11th August  11th after Trinity		8.00am Holy Communion (FB)	8.00am Holy Communion (PH)
	9.30am Holy Communion (LC)	10.00am Morning Prayer (PH)	10.30am Family Service (FB)
	6.30pm Holy Communion (PH)		
18th August  12th after Trinity	8.00am Holy Communion (HH)		
	9.30am Morning Prayer (HH)	10.00am Family Communion (LC)	10.30am Holy Communion (PH)
	6.30pm 3SE		
25th August  13th after Trinity			8.00am Holy Communion (PH)
	9.30am Holy Communion (LC)	10.00am Holy Communion (PH)	10.30am Morning Prayer (KW)
	6.30pm Evening Prayer (LC)		

### MIDWEEK COMMUNION SERVICES—August

	<b>NEWTOWN LINFORD</b>	Thur	10am	1st
	<b>GROBY</b>	Wed	9.30am	7th, 14th, 21st & 28th
	<b>RATBY</b>	Thur	9.30am	8th and 22nd

# CHURCH REGISTERS



## Weddings

8th June ~ David John Gee and Louise Appleby

22nd June ~ Paul David Reynolds and Sarah Jayne Collins



## Baptisms

26th May ~ Joshua Fredrick Roy Thompson

2nd June ~ Aurelia Violet Dale

16th June ~ Roxanne Dowell

***We welcome them in to the Church Family***

## Funerals

23rd May ~ Joan Bates, formerly of Main Street, Newtown Linford

30th May ~ Ella Earnshaw, formerly of Bradgate Road, Newtown Linford

***We extend our sympathy and prayers to the family and friends, and pray that they may find peace through faith in Jesus Christ our Lord.***

### **Church Contact Details**

Team Rector Revd Dr Peter Hooper      0116 239 4606

The Rectory, 23 Ferndale Drive, Ratby, LE6 0LH

Email: peter@hoopers.orangehome.co.uk

Team Vicar Revd Louise Corke      0116 231 3090

58 Pymm Ley Lane, Groby

Email: words.th@talktalk.net

Administrator: Bekki Williamson (9am - 11am weekdays)

0116 239 3768 Email: office@bradgateteam.org.uk

Team website: www.bradgateteam.org.uk

### **Regular Events**

Bell ringer's practice: Monday 8pm



## **Sunday School**

Sunday 9th June was the last Sunday School run by Katherine and Carole Heubeck. Katherine & Carole had been running the Sunday School for the last 6 years and many of the children have been with them for all this time.

Megan, Beth and Anna were presented with books to mark the end of their academic year by the Team Rector Dr Peter Hooper. Unfortunately Lizzie, Abbie and Libby were unable to join them so Abbie and Libby were presented with their books the following week in Church by our Curate the Revd. Helen Hayes. As well as receiving Bibles, the girls were also presented with gifts of DVDs which included Joseph and the Technicolour Dreamcoat, The Miracle Maker, Joseph King of Dreams and The Prince of Egypt,

Katherine and Carole were surprised to receive gifts as well, and were presented with bouquets of flowers and Amazon gift vouchers from the Church and gifts from the children and parents. We would like to say thank you very much for our gifts.

More in the September issue over how Sunday School will be re-launched.

**Carole and Katherine Heubeck**





# THE LINFORD

*"Your village local"*

Main Street Newtown Linford

## Beautifully Newly Refurbished Function Room

Sky TV inc ESPN

Wi-Fi

Weekly Table Tennis Club

Weekly Quiz every Wednesday

Monthly Bingo

Tel: 01530 244012 after 6pm



### Professional carpet & upholstery cleaning and repair services

- ◆ Curtains cleaned in situ
- ◆ Expert spot & stain removal
- ◆ Guaranteed 5 year anti-stain policy
- ◆ Hand finishing of swags & tails
- ◆ Mattresses deep cleaned
- ◆ Pest control, unpleasant or destructive pests removed

Telephone 0800 328 2927

[www.safeclean.co.uk](http://www.safeclean.co.uk)

## SYKES JEWELLERS

WATCH, CLOCK &  
JEWELLERY REPAIRS

WATCH BATTERIES AND  
STRAPS FITTED WHILE  
YOU WAIT

8 BRADGATE ROAD, ANSTEY

TEL: 0116 236 2510

[sykesjewellers.co.uk](http://sykesjewellers.co.uk)



## NHS 111 Launch

It was announced today that the NHS 111 service in Leicester, Leicestershire and Rutland (LLR) will now launch in autumn 2013.

NHS 111 is a telephone service which will be available across England and aims to make it easier for patients to access local NHS services. The number is for those patients who require urgent medical help or advice but whose condition is not life threatening or a 999 emergency.

In May the three Clinical Commissioning Groups (CCGs) responsible for planning and buying many of the health services needed by patients in LLR explained that patient safety is fundamental and would continue to be of paramount importance. This is why the service did not launch in June as previously planned.

The period between now and the launch is being used to evaluate the experiences and lessons learned from other areas to ensure that NHS 111 for residents in LLR will be of the highest quality and fit for purpose. Dr Saurabh Johri, Clinical Lead for NHS 111 service in LLR said “We have been working very closely with Derbyshire Health United (DHU) who will run the service in our area to ensure that we are confident that the service will meet the highest standards of service delivery and patient safety.”

Pauline Hand, 111 Programme and Operations Director at DHU added: “We know from our experience of operating the NHS 111 service that employing the right number of high calibre staff is fundamental to providing a high quality service and we have robust recruitment and training plans in place to achieve this.”

The programme of rigorous testing covering every aspect of the service will continue over the summer months and will be followed by a programme of live system testing in September. There will then be a carefully managed and progressive rollout of the service across LLR which will be completed by the end of October.

David Sharp, director of NHS England (Leicestershire and Lincolnshire), the body responsible for overseeing the work of CCGs, said: “We will be closely monitoring performance going forward but we know that the three CCGs have worked hard understanding concerns of patients and the public in order to ensure a smooth roll-out of the NHS 111 service in LLR.”



[www.the-grey-lady.co.uk](http://www.the-grey-lady.co.uk)



Welcome to the Grey Lady  
For weddings as unique as you are.

If you're looking for an exclusive, and affordable, wedding experience, the refreshingly styled Grey Lady ticks all the right boxes.

Together with our fabulous dining areas and stunning lounge/bar, the Grey Lady offers discerning brides and grooms the sophistication, buzz and vibrancy of the very finest contemporary restaurant, but with a historical legacy and a family heritage that makes for a wedding as unique as you are.



The Grey Lady is nestled in Newtown Linford in the heart of Charnwood Forest overlooking Bradgate Park yet less than 20 minutes from Leicester. Set in over three acres and with an enviable outside drinking and dining area overlooking the Forest.



From small intimate gatherings to traditional family affairs, the Grey Lady can cater for weddings from 10 to 180 people in beautiful countryside surroundings.

Please contact us to discuss your special day at the Grey Lady where we aim to exceed even the highest expectations!

- 01530 243558
- [www.the-grey-lady.co.uk](http://www.the-grey-lady.co.uk)
- [info@the-grey-lady.co.uk](mailto:info@the-grey-lady.co.uk)

The Grey Lady, Sharpley Hill, Newtown Linford, Leicester LE6 0AH

**THE VILLAGE**  
restaurant



## Come Dine With Us!

Enjoy our  
Set Dinner Menu for just  
£15 for two courses  
£20 for three courses  
Thurs & Fri evenings

Saturday  
2 courses £20  
3 Courses - £25



## Exceptional Value

The Village Restaurant  
544 Bradgate Road  
Newtown Linford LE6 0HB  
Tel 01530 245801

[www.thevillagerestaurantnewtownlinford.co.uk](http://www.thevillagerestaurantnewtownlinford.co.uk)  
[info@thevillagerestaurantnewtownlinford.co.uk](mailto:info@thevillagerestaurantnewtownlinford.co.uk)

## Cricket Fixtures

### Saturday First XI

#### July

06 A Hinckley Town	1.30pm
13 A Countesthorpe	1.30pm
<b>20 H Shepshed Town</b>	<b>1.30pm</b>
<b>27 H Kibworth 2</b>	<b>1.30pm</b>

#### August

<b>03 H Loughborough Town 2</b>	<b>1.30pm</b>
10 A Barkby Utd	1.30pm
17 A Thorpe Arnold	1.30pm
<b>24 H Lutterworth</b>	<b>1.30pm</b>
31 A Langtons	1.30pm

### Saturday Second XI

#### July

<b>06 H Kegworth Town 2</b>	<b>1.30pm</b>
<b>13 H Mountsorrel Castle</b>	<b>1.30pm</b>
20 A Shepshed Messengers	1.30pm
<b>27 H Cosby</b>	<b>1.30pm</b>

#### August

03 A Oakham	1.30pm
<b>10 H Quorn</b>	<b>1.30pm</b>
<b>17 H Bitteswell</b>	<b>1.30pm</b>
24 A Stoughton & Thurnby 2	1.30pm
<b>31 H Lutterworth 2</b>	<b>1.30pm</b>

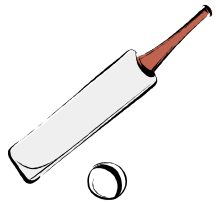
### Sunday XI

#### July

<b>07 H Presidents Day</b>	
<b>14 H Wanderers</b>	<b>2.00pm</b>
21 TBC	
<b>28 H Dunton Bassett</b>	<b>2.00pm</b>

#### August

<b>04 H Woodhouse Eves</b>	<b>2.00pm</b>
11 A Electricity Sports	2.00pm
18 TBC	
25 TBC	





## Cooks Farm Shop

Markfield Lane, Newtown Linford, Leics

LE6 0AB, [www.cooksfarmshop.co.uk](http://www.cooksfarmshop.co.uk)

01530 242214

*Top quality fruit & veg,*

Beef, Pork, Lamb, Chicken, Bacon,

Sausage,

Pate, Cold Meats, Pies etc

Clarkes ready meals

*Fresh bread* delivered Thurs, Fri

& Sat from a Small local bakery

Milk - Cream - Butter - Cheese -

Yoghurts & soups

*Free Range* Eggs and Duck Eggs

Relishes, Pickles, Preserves

And

Lots More Good Things to Eat

Here at Cooks we stock over 50 varieties of Cat & Dog foods as well as feeds, treats, bedding & accessories for small animals & pets.

Plus much much more!

Feel free to come & browse.

Open -

Mon-Fri 9am-5.30pm

Sat 9am - 5pm

Sun 10am - 1pm



## THE POST OFFICE TEA ROOMS NEWTOWN LINFORD

We now make our own hand-made Truffles & Chocolates  
which can also be ordered and boxed

Special chocolates

550 Bradgate Road • 01530 242 709



**Newtown Linford Neighbourhood  
Watch  
A member of the Parish Council**



I understand that our new PCSO Stephen Quinn (collar 6646) is fully operational and in fact has been to visit a resident in the village but I have not met him yet.

It has been a quiet month so far. There were reports of a car with two men in it driving strangely and erratically in Ulverscroft Lane. The number was passed to the Police and they said the occupants were known to them but no crime had been committed.

Sadly two hanging baskets were taken from outside the village shop. Sharon and Tony go to a lot of trouble to make the shop look good for the residents and visitors.

A computer scam has hit at least one resident this month. It is the one that comes in as an attachment or just a hyperlink on the main page. It gets into your contacts and sends out an email to them saying you are stuck abroad and need money. It tells you to reply to an email that looks similar to the sender but in fact is registered to another provider. Careful study shows that it only sends to those people in your address book with whom you are not in regular contact i.e. regulars will know you are not abroad. Clever really if you can write a programme like that but terrible for the recipients.

I have also received two emails from other residents with just a hyperlink and nothing else. Never ever click on the link even if you know the name of the sender.

**Pam McMorran**  
**NHW Co-ordinator**  
**[pam@riverlyn.freeserve.co.uk](mailto:pam@riverlyn.freeserve.co.uk)**  
**01530 242140**



S  
O  
L  
D

# Roy Green

*more* LETTING AND ESTATE AGENTS

SALE PROPERTIES *required*

TENANTS WAITING *for*

LETTING PROPERTIES

Tel: 0116 235 3009

**FREE E.P.C.** *with every listing*

L  
E  
T

## PAUL HARBY

Joiner / Handyman

**INTERIOR /  
EXTERIOR WORK**

No job too small – Free  
Quotation – Design

275 Markfield Lane  
Markfield

01530 245 464  
07794 262 199



[paulrharby@yahoo.co.uk](mailto:paulrharby@yahoo.co.uk)

## MARTIN ALLEN

**FLOORING &  
FRENCH  
POLISHING**

**YOUR LOCAL  
FLOORING SPECIALIST.**

**All timber floors laid**

**All existing timber floors  
sanded and refinished**

**Any colour or finish**

**Free quotations  
call Martin.**

**0116 2165107  
07973256176**



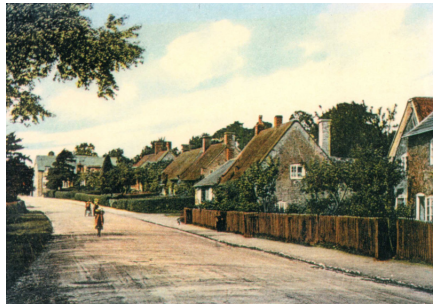
## From the Records

Looking through the Village Records, I was reminded that some things through the years are the same, but others have changed a great deal. I have been looking at 1993-1994 records. That winter there was snow as the lovely photographs show. To bring the records up to date we have added our snowy pictures for this last winter.

Recently we have been living with the contractors replacing our water pipes, some of ours were probably as old as those in Queniborough (where they burst and flooded village homes and roads in June) - a good job it didn't happen to us.

What has been worse, has been the gridlock on the Bank Holiday weekend and the following Sunday. There are now too many cars on our village roads parked everywhere, disregarding yellow lines and safety when we have nice weather.

This drew me to an article that was in the 1993 records, explaining about life in Newtown Linford in the past. The photograph shows you Main Street, no cars and children playing in the road. Mr A J Harrison (aged 92) of Thurcaston said the first motor car to be owned in the village was in 1919, when Mr Harry Black, Landlord of the Bradgate Arms, acquired a black model T Ford.



Mr Harrison also recalled that before the First World War the village had no mains water, electricity, telephones or gas. Telegrams were brought by cycle from Groby. He also stated that the postman brought two copies of the Leicester Advertiser on a Saturday, one for the Land Agent of the Bradgate Estate and the other for the Vicar. They were passed on to those who could read.

There were no buses into Leicester - just the Carrier's horse and cart on a Saturday. The first bus was a converted ex army ambulance in the early 1920's operated by a Mr Billsdon. It ran each way on Wednesdays and Saturdays and to Leicester City home games on a Saturday afternoon. They worried would they get there in time because it often broke down! A little later Harry Smith ran an eight-seater Ford called the Swan. In the 1970's double decker buses used to bring visitors to the park - over 70 per bus. Now they come in cars which take up a lot more space. It is now not just the weekends, but also weekdays particularly in the school holidays because grandparents are car owners, let hope we find a solution.

## Brookvale's Got Talent!

On Thursday evening 18<sup>th</sup> April along with parents/ carers/grandparents, staff and Governors I went along to Groby Community College to enjoy the final of Brookvale's Got Talent. What an amazing experience!

The purpose of the competition was to raise funds for Rainbows, the children's charity and a most worthy cause.



A lot of planning, preparation and hard work had gone into the whole show. Everything was of a very high standard.

The finalists consisted of 4 female singers, 1 female accordion player and 2 male double acts. We were treated to a great night's entertainment. Once all the acts had performed the audience were asked to vote for their favourite act, a very difficult decision as they were all very good and very different.

After the interval we were further entertained by 'The Spice Girls' (female members of staff) singing 'Stop!'. They proved a real challenge to Posh, Baby, Ginger, Sporty and Scary! Next we had Tom Jones, (a very senior member of staff), with his able backing group, (The Kitchen Ladies) singing 'Delilah'. Great Stuff! The entertainment was brought to a close by last year's competition winner, Katie, singing Jessie J's, 'Mamma Knows Best'.

The tension was growing – who would win?? Votes were counted and the winner was announced. 1 Sadie, 2 Tom & Ryan, 3 Jack & Mac. All most deserving winners. Sadie brought the evening to a close by performing once again, her winning song, Christina Perri's, 'Jar of Hearts'.

A great night, a great production, with over £600 being raised for Rainbows, and Brookvale students we all can be justly proud of. Well done everyone!

**Ann Dunn, Brookvale High School, Governor**

## Marching Band visits Brownies

On Thursday 6th June, the 78 Leicester (First Thurmaston) Scout and Guide band came to brownies. As it was such a lovely night we went out on Brown Owls mums lawn. We were taught how to march. We marched up and down following our instructor, swinging our arms and learning how to 'fall out'. Then we were put into groups and had a go at playing the instruments. There were lots of them including a clarinet, saxophone, cornet, drums, cymbals and xylophone. It was fun, the drums were really loud!

After we had finished having a go with the instruments, the band played two songs, one of them being the Chicken Run theme tune! I hope we can do it again, everyone had a great time.

**Beth York, age 9**





*Being there for you  
and your family*

## FLOWERS FOR LOROS

Loughborough Baptist Church is planning a Flower Festival at the end of June this year which is entitled "Let us Tell You a Story". All the flower displays will depict a well known Bible story, ranging from Creation to Resurrection. This team

of flower arrangers from Church Members and friends was responsible for a widely acclaimed Flower Festival two years ago. Planning for this year started back in November last year and has progressed gradually until the final plans, which are now being finely honed!

Entrance to the festival is free but LOROS will benefit from donations given in the collecting jars.

On Saturday evening, 29th June, there will be a concert which takes the same themes as the arrangements and expresses these in words and music. This will

start at 7.00pm, with a pre-concert fruit cocktail included and will last about an hour. The concert has always been appreciated as one of the Festival highlights. Entrance to the concert is free – with the opportunity to donate to LOROS at the end.



Refreshments will also be available throughout the opening times, with lunches available on Friday, Saturday and Monday.

Opening times are:

Friday 28th June 10.00am - 5.30pm,

Saturday 29th June 10.00am until the concert finish (approx 8.00pm),

Sunday 30th June Morning Service at 10.45 then 2.30 - 6.00pm

Evening Service 6.00 - 7.00pm,

Monday 1st July 11.30am - 2.00pm

You can find Loughborough Baptist Church in Baxter Gate Loughborough. If you would like to book a group for a tea or lunch, please phone the Church on 01509 215642

**fionafrankland**  
legalservices

Tel: 0115 9393360  
Email: fiona@fflegalservices.com  
Mobile 07973 701275

We offer the following:

- Probate Services
- Wills
- Lasting Powers of Attorney
- Court Of Protection
- Advance Directives (Living Wills)
- House Clearance — Full Or Part Homes Cleared
- Care Fee Planning and funding
- Pre paid Funeral plans

Also offering services for Wealth management  
Home visits and hospital visits. Evening and weekend appointments

**Over 20 Years experience. A member of the Institute of Legal Executives  
and the Society of Trusts and Estate Practitioners**

## **LARGE PRINT COPIES**

If you know anyone or you yourself would like to receive a large print copy of the Village Magazine please contact Anne and David Couling telephone 242452

**Many thanks to Newtown  
Linford School  
for the use of their facilities  
to produce the large  
print magazine.  
It is much appreciated**

37

## **CONSERVATORY REPAIRS AND RENOVATIONS**

Blown Panels replaced  
Roof Replacements - Glass or  
Polycarbonate

Leak Repairs and Resealing  
Solar Film Application

## **Classic Conservatories**

**CONTACT - Chris Gee**

**Mobile 077 6933 1419  
Tel 01530 242 958**



**40th Leicester  
(Anstey & Newtown Linford)  
Scout Group Newsletter**

**Section Meetings**

**Beavers (6 - 8 years)**

Thursday 5.45-6.45pm

Leader: Mandy Jordan

Tel: 0116 221 9251

Email: [mandy\\_jordan@cuk.canon.co.uk](mailto:mandy_jordan@cuk.canon.co.uk)

Assistant Leader: Stuart Wells

Tel: 07999 884559

Email: [stu.wells2112@gmail.com](mailto:stu.wells2112@gmail.com)

**Cubs (8 - 10 1/2 years)**

Tuesday 6.30-8.00pm

Heather Savage

Tel: 0116 220 2376

Email: [heather.savage@ntlworld.com](mailto:heather.savage@ntlworld.com)

Neil Whittall

Tel: 07756 788335

Email: [n.whittall@sky.com](mailto:n.whittall@sky.com)

**Scouts (10 1/2 - 14 years)**

Wednesday 7-8.30pm

Leader: Adrian Barnes

Tel: 07899 896275

Email: [Adrian.barnes4@ntlworld.com](mailto:Adrian.barnes4@ntlworld.com)

Assistant Leader: Anita Hurran

Tel: 07717 256100

Email: [anitahurran@talktalk.net](mailto:anitahurran@talktalk.net)

Dates for your diary:-

29th June - Annual Duck Race.  
10am - 1pm. £1 per duck with a  
top prize of £100 plus stalls,  
breakfasts, bouncy castle and  
cakes.

This year is the 30th Birthday of the Charnwood District in Scouting. The district team organised a camp at Sherbrooke Campsite in Nottinghamshire with over 500 members attending over the weekend. 40th Leicester were in attendance with 15 scouts, 17 cubs, 18 beavers and 15 leaders or adult helpers. Pirates was the theme for the camp, with cubs and scouts making Pirate Scarecrows together. The following day saw the cubs start off with a sing along before they headed off to Wheelgate for a day of fun at the theme park.

**Executive Committee members needed**

If you've been reading this newsletter for any amount of time you will be aware we are always looking for new volunteers. *How can we tempt you to come and join our happy group?* Perhaps if we explain some of the fun we have organised recently

- We enjoyed a group meal with the Leaders in Leicester
- Spent a weekend camping with excellent food, entertaining company, fabulous weather, campfires, water slides, glorious countryside views and huge fun. Such a great time was had by all, we are hoping this will become an annual event.
- A future skittles evening
- Our meetings are usually held in walking distance of Anstey with a bar in close proximity

No long term contracts, no experience required. We are grateful of any support. The additional skills you may acquire assisting your child's Scout Group add to your CV. Why not give us a try?

# Broughtons

Period Home Accessories Since 1888

## *Charming showrooms displaying*

Period Furniture . Mirrors . Lighting . Ironmongery . Stoves

Fireside Tools . Switches & Sockets

Oak Doors & Flooring . Garden Furniture

Also

A delightful selection of traditional Gifts & Home Accessories

## *Luxury Coffee Lounge*

Serving home-made cakes, and light lunches

*Open 7 Days Mon-Sat 9-5 Sundays 10-4*

The Old Cinema, Cropston Road, Anstey, LE7 7BP

[www.broughtons.com](http://www.broughtons.com) [sales@broughtons.com](mailto:sales@broughtons.com) Tel. 0116 236 5300

## **Ella Jane Austin Earnshaw - August 19th, 1920 - May 20th, 2013.**

Ella and her husband Bobbie were originally from Scotland. They moved to Leicestershire in 1966 and spent many years farming near Shepshed before retiring to Bradgate Road, Newtown Linford. Ella moved to Cropston after Bobbie died and eventually to Cedar House Residential Home in Rothley. She always had fond memories of their years in Newtown Linford - often going for walks with their family in Bradgate Park, Luncheon Club Meetings at the Grey Lady and the Johnscliffe and enjoying attending Services at All Saints Church. Her funeral was held at the Church, according to her wishes, on 30th May, 2013.

Ella leaves a son and daughter, five grandchildren and two great-grandchildren.

Thanks to daughter Christine for  
39 this copy.



## **NEWTOWN LINFORD PARISH COUNCIL**

We are between meetings at the moment, but I will bring you up to date in the September edition. You will have seen in the June magazine that, sadly, Virginia Toon has come off the Parish Council due to many other commitments. There is now a Casual Vacancy. This means that rather than wait for the next election, the Parish Council can co-opt a new Parish Councillor.

Have you ever considered becoming a Parish Councillor? You would have to attend a Parish Council meeting once a month, and if you are happy to do it, to also attend some outside meetings which might take place at the Borough Council at Loughborough or the County Council at Glenfield. There is no pay, but you get a lot of satisfaction from being involved in making decisions on behalf of the community. If you want more details let me know. More than one person may apply, in which case there would have to be a vote at the next Parish Council meeting.

Although Virginia has retired as a Parish Councillor she is keen to continue with a project she started. We have been granted £350 worth of plants and bulbs from the Stepping Stones Project and County Highways department has given its permission for these to be planted on the grass strip between the service road hedge and Markfield Lane. The plants come from Naturescape who supply only native plants. Brown Owl Hilary, the Brownies and Virginia will be planting the plant plugs in September and the bulbs in October. These will be marked by small white pegs and the highway contractors will not cut that area at certain times. Virginia is hoping with the assistance of other keen gardeners to keep an eye on this patch and hopefully it will be successful. If so we can add more plants next year.

The next two Parish Council meetings are on Monday 15th July 2013 at 7 pm and on Monday 19th August 2013 at 7 pm, both in the small hall of the Village Hall.

We would love to see you.

**Lydia Knott**

**Clerk to the Council**

**T: 01530 242522; e: [lydia.knott@hotmail.co.uk](mailto:lydia.knott@hotmail.co.uk)**



## A reminder of how to contact the Police in non-emergencies.

**Dial 101.** The Voice message will tell you they are connecting you to Leicestershire Police unless you press 1. Wait and the next set of options are:-

1 – to speak to an operator and report your matter.

2. – this is to leave a message with our beat team. Tap in their collar number and speak when asked to. For our area contact P.C. Richard Carruthers 2139



Mark  
Chadwick



---

P~L~A~S~T~E~R~E~R

---

High quality plasterer with  
25 years experience  
Competitive rates.  
All jobs considered.

**For a free quote:-**

**Telephone: 0116 2861057/Mobile:  
07971 978 098**

**Email: [markchadwick@hotmail.co.uk](mailto:markchadwick@hotmail.co.uk)**

41

PRIVATE AND  
COMMERCIAL

INTERIOR / EXTERIOR

**A.B. SHERRIFF**

Established 1988

**PAINTER &  
DECORATOR**

**42 BRADGATE DRIVE  
WIGSTON, LEICESTER**

**Telephone 0116 288 1048  
Mobile: 07719 366 569**



## **Booking of Village Facilities**

**To book the Village  
Hall (Residents only)**  
call Pat Wood on  
242251.

**To book the Sunday  
School Room £10 per  
hour, £15 for two  
hours, £20 for 3 hours,  
£45 per day**  
call Casey Pearson on  
249259

## **Foot Problems ?**

**Corns, Calluses, Veruccae, Hard Skin, Nail  
Problems, Athlete's foot,  
Sore and Cracked Heels.**

**Have them treated  
Professionally in the comfort of  
your own home**

Ring **Alistair Watt** MCFHP.MAFHP.  
**Foot Health Specialist**



**Tel 01530 243009  
or 07802 777221**

**Evenings and weekends  
available**

**Service with a smile -**



## **Magazine Contributions**

Can we have your contributions for the **September 2013** issue by **15th August 2013** please. **Send to the Editor, Carole Heubeck, 5 Grey Crescent, Newtown Linford (01530 244790).**  
**E-mail heubeck111@btinternet.com**

**Please could you send any emails to the above email address. If you do not receive an acknowledgement of your email - please contact Carole, the Editor direct on the above number to check we have received it.**

The opinions expressed by the contributors are not necessarily those of the Editors and they reserve the right to amend, shorten or not print any article or advertisement submitted for publication. Whilst every effort has been made to ensure the accuracy of the information printed in this magazine, and advertisements are accepted in good faith, no liability can be accepted for loss, damage or claim of any kind incurred by the reader