

Newtown Linford Magazine

ISSUE NUMBER 122

CONTENTS

Church News	3/4, 22/27
Coffee & Cake	4
Rummage Sale	5
Friends of Charnwood Forest	6
Tennis	6
Gardening Club	7
Bradgate Drama Society	8
Choral Society	10
Bradgate Park	13
Cricket	17/19
Ramblers	20
Brownie News	21
Easter Flowers	26
From the Records	28
Primary School	30
Tai Chi Class	33
David Snartt	36
Neighbourhood Watch	37
Village Defibrillator	43
Parish Council	45



March 2015

ROY GREEN
CHARTERED SURVEYORS

LEICESTERSHIRE AGENTS

Whether you are selling or letting call 0116 235 2009
for your no obligation Market Appraisal and Valuation.

ROAKE • LUTTERING • LASH • ALBERTAINS • JERVEY



We will make your property stand out from the crowd!!

Every letting will have the following all included within our sales fee:

- **PROFESSIONAL PREMIUM LISTING**
Larger text, three photos, larger listing box, choice of multiple photos that rotate.
- **FLOORPLAN**
Helpful to heat the size and layout of your property for potential purchasers.
- **EPC's**
We'll pay for EPC's or show our tenants by providing this.
- **ACCREDITED VIEWINGS**
This helps EPC in all your home and our journals a hard credit.
- **SHOW OFFERING IMMEDIATE TO FORWARD**
Most people use the weekend to view or book viewings.
- **ARRANGEMENTS TO DATE AGREEMENTS AND DOCUMENTS**



Comparing this level of service you also won't be disappointed to hear all you will need to pay...
1% plus VAT

Landlords, whether you want a 'Tenant Find', 'Let Only' or 'Full Management' service for your residential property, you need to speak to Roy Green Letting Agents.

- **PROFESSIONALLY QUALIFIED**
There are many agents for many members of the Royal Institute of Chartered Surveyors, not least the Chartered Money Protection Scheme.
- **PROFESSIONAL PREMIUM LISTING**
According to Rightmove, an average their Premium Listing attract 24% more views and 21% more enquiries than standard listings.
- **FLOORPLANS**
All properties advertised with a floorplan, no additional charge.
- **CONTRACTS/TERMS AND**
We do not charge 'Set Up', 'Tenant Find' or 'Transfer' fee under our Full Management service. We don't add a 'works charge' to contractual party lettings, you get charged what the contract charge is.
- **EXPERIENCE** (20 years) displayed in our multiple thousands.

Full Management Fee from 8% plus VAT - No 'Set Up', 'Tenant Find' or 'Renewal' fees

Horseshoe Cottage Farm

Luxury bed and breakfast accommodation



Award Winning B & B
Winner of the 2015/16
B&B's Best Accommodation
of 2015
for 2016/17

Proven success with
Awarding Cuisine, Service &
Sustainable program in the
East Midlands



Roecliffe Road, Hallgates, Cropston, Leicestershire LE7 7HQ

Tel: + 44(0)116 2350038

Email: lindajee@horseshoecottagefarm.com Website: www.horseshoecottagefarm.com

The Bradgate Team Parish



By the time you read this letter we will already be in the season of Lent. The season of Lent is 40 days long. It begins on Ash Wednesday and lasts until the day before Palm Sunday, the first day of Holy Week. It is a serious and thoughtful festival, a season for reflection and thinking about the things we have done wrong and what we should do better in the future.

I have been doing quite a bit of reflecting about this season and trying to get my head around why we fast and what it means as a Christian?

It is more common these days for us to give up a particular vice such as favourite food or "tipple" or maybe even use it as an opportunity to stop smoking. Whatever the sacrifice is meant to be, it is a reflection of Jesus' suffering in the wilderness and a test of self-discipline. There is absolutely no doubt that for the majority of us giving up these things does take a great deal of self discipline but it shouldn't be about giving things up with ulterior motives behind it. Giving up chocolate or alcohol may be exactly what we need physically, but the purpose of fasting in the season of Lent is for spiritual growth not physical health. If the point of giving up something for Lent is nothing more than self-congratulation for feats of abstinence isn't this missing the point? This year I intend to take a different approach. Instead of giving up a favourite food/drink I found something that really appealed
3 to me It comes from the charity CAFOD, and was used ini-

“And whatever you do, whether in word or deed, do it all in the name of the Lord Jesus, giving thanks to God the Father through him.”

Colossians 3:17

tially with teenagers, but for me it will be a real test of self discipline and help me with my own spiritual growth. I will at the end of each day reflect on how I did and record this. You may find this helpful and would like to try it yourself.

My Lent test of self discipline

Give up harsh words and use generous and kind words

Give up anger and take up gentleness and patience

Give up complaining and value what you have

Give up judging others and discover Jesus within them

Give up selfishness and take up compassion for others

Give up being unforgiving and learn to forgive others

God Bless Joan Hawkins -Pastoral Assistant

Coffee & Cake

Newtown Linford Village Hall

Thursday Morning 11.15am - Free

All Welcome - All Ages

**Please join everyone to catch up on village news and activities
and to meet your fellow neighbours – call 01530 243433**

- 5th - Katie Cook & Haley
- 12th - Bev Griffiths & Sue Dobby
- 19th - Sarah Raynor & Carmel
- 26th - Margaret Bloor & Sue Clarke

Plumbing & Heating

- City & Guilds qualified
- 25 Years Experience
- All Plumbing & General Maintenance Work Undertaken
- Reasonable prices
- Free Estimates

References available from local satisfied customers.

Nick Phillips Bradgate Road, Markfield

Tel: 01530 244981 Mob: 07779 698292



VILLAGE DIARY



March 2015

7th Rummage Sale
14th Village Ramblers
16th Richard III, Friends of Charnwood Forest
23rd Parish Council
24th Gardening Club

Regular events

Monday afternoon	Mature Movers fitness class V. Hall
Mondays 8pm at the Church	Bell Ringing
Tuesday afternoons 3-5pm	Mothers and Toddlers (SS Rooms)
4th Tuesday of the month	Gardening Club
1st Wednesday of the month	Flower Club
3rd Wednesday of the month	Ladies Luncheon Club
Thursdays 11.15	Coffee Mornings for all
Thursdays 6.30	Brownies
3rd Thursday	Gentlemen's Lunch Club

RUMMAGE SALE

NEWTOWN LINFORD BROWNIES

Saturday 7th March 2015

1.30pm in the Village Hall

Admission 50p

Tea and Home Made Cakes

Village Hall doors will be open for dropping off rummage from 9.30am on date of sale, or collection can be arranged

Hilary - Brown Owl.

Richard III

And the

Battle of Bosworth

A talk by Richard Knox

For the Friends of Charnwood Forest

At Woodhouse Eaves Village Hall on

Monday 16th March at 7.30 p.m.

Richard Knox has been involved in Leicestershire archaeology for 24 years, working in a number of different roles for Leicestershire County Council. He first became involved at Bosworth Battlefield Heritage Centre in 2005, when work started on a survey to find the actual battlefield and he led the reinterpretation of the Heritage Centre on Ambion Hill. He is currently engaged, with colleagues, in organising the County's elements of King Richard's reinterment in March.

All are welcome.

Further information--Peter Bertram 01162100572 or www.focf.org.uk

Newtown Linford Tennis Club

New for the 2015/16 Season the Club has entered the following Teams in the Leicestershire League

Ladies

Childrens Mini Reds

Under 16

A very exciting time for the club it has not had a ladies team for many years and even longer since it had Junior teams. Thank you to Jonny the coach for encouraging the children to take part.

If you would like to take part there will be some Ladies team coaching starting in March (Times in the next magazine).

Any Juniors who are interested please see Jonny down at coaching on Saturday mornings 9am - 11am

For Further information please contact Carol Ann Sugden on 01530 243433

Newtown Linford Gardening Club

Our winter continues to be grey and quite cold but not too much of the white stuff and only short term frosts. The snowdrops are beginning to show in abundance but seem to be appearing in penny numbers rather than all at once. It seems the ground has been hard during parts of January and so the shoots have had to work harder to push through. Perhaps this year we will still have snowdrops and aconites at the same time as the early daffodils which should make for a grand spectacle.

Our talk in January on Garden Birds from Dr Edwards of the RSPB attracted an audience of 60 members and guests. It was good that we now have the use of the large hall because our numbers have certainly made the small hall impractical. Dr Edwards was a fine speaker and kept us entertained and educated for the full evening.

On 24th March we welcome back Carolyn Tait, whose subject this time is seed propagation. Carolyn has a prestigious position at Coton Manor which is, as many of us know, one of the finest gardens in the West Midlands. She is a very knowledgeable gardener with many years experience at the highest level and we are delighted to welcome someone of her stature.



We have welcomed a large number of new members this year and will be pleased if others want to join us. If you are interested in our activities just contact the Secretary (tel. 242452 or e-mail 01530242452@talktalk.net), or come to one of our Meetings to see how you like it before making a commitment (£2 for visitors). Alternatively give us a ring and ask for a copy of our programme for the coming year and we will be pleased to send one to you.

Anne and David Couling

Bradgate Drama Society

will be presenting their Spring Production



at Newtown Linford Village Hall

**Thursday 23rd, Friday 24th
& Saturday 25th April.**

The play, written by Marc Camoletti and adapted by Robin Hawdon, is an hilarious comedy set in a country house with a confusion of wives, cooks and mistresses creating an evening of chaos.

Tickets are £7

and are available from Toby Manning
(01530 245298)

or through their website - www.bradgatedrama.org.uk/



Cooks Farm Shop

Markfield Lane, Newtown Linford, Leics
LE6 0AB, 01530 242214
www.cooksfarmshop.co.uk



We stock small and large bags of – Bradgate
Wild Bird* Superior Wild Bird* Robin &
Songbird Mix* Peanuts*Sunflower
Hearts*Niger Seed* Peanut Granules*Suet
Balls*Suet Pellets* Feeders and Treats plus
many many more!!

See our website for prices www.cooksfarmshop.co.uk

Top Quality Fruit & Veg
Beef, Pork, Lamb, Chicken, Bacon, Sausage
Pate, Cold Meats, Pies Etc
Clarkes ready meals
Fresh bread delivered from a local bakery
Milk – Cream – Butter – Cheese – Yoghurts
Free Range Eggs
Relishes, Pickles, Preserves
And lots more good things to eat

Open:

Mon - Fri 9am - 5.30pm

Sat 9am - 5pm

Sun 10am - 1pm

Paint Wizard

All Types of Vehicle Body Repairs

Panel Resprays from £165

Scratch Removal from £45

Stone Chip Repair from £45

Windscreen Repair from £35

Colour Restoration From £65

Alloy Wheel Refurbishing from £45

Machine Polishing & Glaze from £100

Colour Code Bumper Resprays from £165

Colour Code Wing Mirror Resprays from £45

Free Collection & Delivery Service Available

All prices are plus VAT charged at the prevailing rate

07850 456696

Proprietor Paul Beaver, Grey Crescent, Newtown Linford





NEWTOWN LINFORD CHORAL SOCIETY



I am delighted to report that our Winter Concert in Ratby Church, when we sang 2 works by the contemporary composer John Rutter, was a great success. The programme proved to be very popular and we welcomed almost 300 people over the 2 evenings. Congratulations to our soloists Sarah Stephens, Clive Hilton, the Youth Choir and amazing Orchestra, all under the direction of our Musical Director Sue Ford.

Rehearsals for our Summer Concert "100 Years of Love and War" are now under way. Our Compere will be Len Matthews and accompanist John Fletcher. Tickets are sure to sell very quickly so" keep the date"

11-13th June 2015, in Newtown Linford Village Hall.

For more information contact Peter Sayer, or myself, on 01530 243822.

Iris Sayer



HOLISTIC HYPNOTHERAPY

can help you with.....

- Stress Management and General Anxiety
- Relationship Problems
- Weight Loss and Body Image Problems
- Lack of Confidence and Self Esteem
- Stopping Smoking
- Fears and Phobias
- Sleep Problems

and much, much more.....

Margaret Gee has long experience in offering confidential, friendly, help and guidance as resident Hypnotherapist at The Hypnotherapy Association in Lancashire and is now working from Newtown Linford.

For information see Margaret's web link www.hypnotherapyassociation.co.uk / find a therapist / Leicestershire / Margaret Gee

To book an appointment or for more information please **Telephone 01530 242958 Text 07855 968050 or e-mail marhyp@uwclub.net**

**MARGARET GEE D.A.H.Hyp
CHARNWOOD HOUSE, 516 BRADGATE ROAD,
NEWTOWN LINFORD, LE6 0HB**



The Grey Lady 

The Grey Lady is nestled in Newtown Linford in the heat of Charnwood Forest overlooking Bradgate Park yet less than 20 minutes from Leicester, set in over three acres, it has an enviable outside drinking and dining area overlooking the forest.

Fixed Price Lunch Menu
Available Monday-Saturday
2 courses £15.00

Fantastic Offers!!

5 course Tasting Menu
Available Monday-Thursday Evenings
Only £20.00

For more information or to make a booking please contact:
Telephone 01530 243558 Email info@thegrey-lady.co.uk



For all of your legal Requirements locally

We can help you with the following services:

- Buying & Selling a Property
- Tenancy Agreements & Disputes
- Transfers of Ownership
- Re-Mortgages
- Lasting Power of Attorney
- Wills & Probate
- Accident & Injury Claims
- Debt Recovery
- Divorce & Separation

Free initial advice and a competitive quote call

0116 2364875

Florence Villa, 5 Leicester Road, Anstey, LE7 7AT

Email: victoria@garrettlongsolicitors.co.uk

www.garrettlongsolicitors.co.uk

From the Park Spring is Here



Even though it has not been a particularly hard winter, it always lifts the spirits when the days begin to rapidly lengthen and the snowdrops poke their heads above ground.

As I mentioned last month, the Rangers have been busy with tree work both in Swithland Wood and on the Park itself. We have put the 2014 tree survey report online and you can find this on the 'Bradgate Park Trust' page of our website. This lists all the parkland trees in numerical order and enables the number on the small metal disc on the tree to be cross-referenced to information about its species, age, state of health and any work that needs to be done. Unfortunately, some misguided individuals have been removing the discs from some of the trees for whatever reason. The disc is fixed to the dead outer bark of the tree and has no effect on the tree's health but provides the link to vital information that enables us to ensure the tree's future good health through appropriate and timely management.

This year is going to be very much about archaeology. Following on from the Bradgate Lecture at the end of February, University of Leicester Archaeological Services are going to be excavating the Upper Palaeolithic site at the end of Little Matlock. The site is one of only three open air sites from this period ever found in the UK and is under threat from the erosion of the footpaths that run through it. In June the University of Leicester School of Archaeology & Ancient History will be holding their annual Field School on the Park, which is something that we anticipate continuing for the next five summers. There will be an Open Day on Saturday 27th June where there will be a chance to talk to the archaeologists and students about their work and see some of the finds.

We closed the order book for venison boxes in early February and finished the cull by the end of the month. We have, however, made sure there are plenty of venison sausages in the freezer ready to go on the BBQ at the Summer Fair.

The 2015 Events Programme went live on the website in February and by the time you read this the paper version should be on the shelves in the tearooms, shop and visitor centre. This year as well as three outdoor theatre productions, two seasonal fairs, the Living History weekend and a varied programme of guided walks, we will be running activities such as

stream dipping on a drop-in basis on occasional weekends and a Wildlife Weekend on 11th/12th July which will involve a range of activities to introduce visitors to the incredible array of creatures that make their home on the Park.

Sadly, we have continued to have problems with uncontrolled dogs on the Park chasing deer. We have lost far too many animals this winter and are now encouraging the Police to take prosecutions of owners under the Dangerous Dogs Act. If anyone witnesses a dog chase on the Park, please report it to a member of staff or contact the office as having detailed statements from witnesses is important if we are to successfully prosecute offenders. I have been encouraged by the way in which the Leicester Mercury and BBC Radio and TV have supported our campaign to raise awareness of the issue and hopefully the message will begin to get through.

We have continued the programme of re-pointing and repairs to the walls in the Ruins and we will hopefully have the interior of the chapel redecorated later this spring. The chapel was last painted 7 or 8 years ago and the paint has since peeled quite badly to the extent that the building now looks very sad and unloved. We have had the paint finishes analysed and, after removing all the more recent finishes down to the last sound layer, the specialist painting contractor will be applying a historically appropriate paint finish that will hopefully last rather longer than the previous one.

I must not forget to mention that we have new bins ready to go out on the Park. These are modelled on the old 'cottage-style' wooden bins but now incorporate space for recycling.

Peter Tyldesley

Mums and Toddler Group

3pm - 5pm every Tuesday at the Newtown Linford Sunday School Rooms by the entrance of Bradgate Park. Cost is £1 plus free tea, coffee and biscuits. The first session was held on 27th January 2015. Everybody is invited; Parents, Grandparents, Carers, Brothers and Sisters.

For more information call Beate on 01530 245198



Donations of old toddler toys welcome

Scarecrow Festival Weekend Will Go Ahead!!

It gives us great pleasure to confirm that the Scarecrow Festival will take place this year as usual, and will be held on 26th and 27th September 2015. Beate and Chris, two mums in the Village, are taking on the organisation of the weekend, and will be calling on friends and willing helpers, old and new, to contribute, to hopefully make it the success it has been for many years.

Look out for new ideas and familiar favourites. We're hoping to be able to include more people from the far boundaries of the Village by having a communal space in the centre of the Village where scarecrows can be exhibited. We're looking forward to working alongside enthusiastic participants and partners, including local business and community groups, Newtown Linford School, brownies and our friends at Bradgate Park.

We'd like you to get involved in any small or large way you can - please contact Chris via email at chris@wroe.co.uk or Beate on 01530 245198, with your ideas and enthusiasm. And please do start thinking about your scarecrows - it's never too early! An ideal place to get some inspiration is the Brownie Rummage Sale, which will be held in the Village Hall on 7th March - pick up clothes, shoes, bags and props for a pittance - get them before your neighbours do! There's no particular theme - just let your imagination run riot!





COVERING *Martin Page* YOUR LOCAL

The Newtown Linford Area

Tree Surgeon

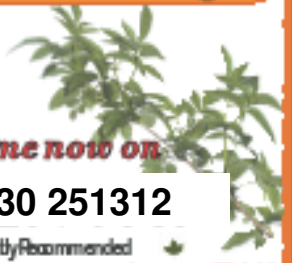


charnwood
charnwood
tree services

Have you considered your trees may need some maintenance from time to time. Are your trees maybe too tall blocking light, unsafe or untidy? Or maybe you need to remove that stubborn stump. Do your hedges, Conifers or shrubs need trimming. With 30 years of experience working with trees in your area, I would be pleased to offer you free advise and a free quotation.



I also sell high quality firewood logs



- Fully Insured
- Local family business
- Clean & tidy service



call me now on

01530 251312

Constantly Recommended

PEST CONTROL

DOMESTIC • COMMERCIAL • INDUSTRIAL



**Guaranteed Service
No Add On Charges**

Wasps * Fleas * Ants Rodents
Bird Control * Fly Killers * Fly Screens *
Pet Screens * Feminine Hygiene

FOR A FAST, RELIABLE RESPONSE

CALL FREE ON

0116 234 0078



www.targetpestcontrol.co.uk | info@targetpestcontrol.co.uk

Be Part of the Winning Team



© John Welch MP/CCI

Newtown Linford Cricket Club Sponsorship 2015

Newtown Linford Cricket Club is continuing to make impressive strides both on and off the field.

Aside from our competitive first and second teams, for the first time in 2015 we will field a Saturday Third XI which will provide a platform for our emerging juniors who are capable of making the step up to senior cricket.

Aspirations for success remain as high as ever but needless to say, there are significant costs involved in running and maintaining an amateur club like ours, particularly during difficult economic times.

The club has several ambitious projects earmarked over the coming years (new practice nets, levelling of the outfield to name just two) but as we all know these do not come without a price tag.

We are therefore looking for businesses or individuals to pledge their support as we strive for further success again in 2015.

Please back your local club and get in touch! Thank you.

Jon Dale
Club Chairman



NLCC 1st XI Everards Division I



NLCC 2nd XI Everards Division III

Package A £100

- Recognition around the ground on the day of your sponsored match
- Recognition on sponsors board throughout the season
- Full page advert in the NLCC 2015 fixture list*

*Size: 138mm (h) x 95mm (w), artwork to be supplied by 22nd February 2015 in order that printing deadlines can be met.

Package B £50

- Recognition around the ground on the day of your sponsored match
- Recognition on sponsors board throughout the season
- Half page advert in the NLCC 2015 fixture list**

**Size: 67.5mm (h) x 95mm (w), artwork to be supplied by 22nd February 2015 in order that printing deadlines can be met.



For information on further sponsorship opportunities please contact Jon Dale on 07824 016 041 or Ed Clarke on 07979 538 676.



Newtown Linford Cricket Club

ANNUAL SPORTSMANS DINNER

Friday 27th March 2015 • Lingdale Golf Club

Arrive 7pm for 7.30 • Auction • Reverse Bingo • Dress Code: Jacket & Tie

Tickets
£35

Event Sponsor

ADVENT
partners

Guest Speaker
Former Premiership Referee

Jeff Winter
and comedian **Austin Knight**

Name: _____ please reserve me _____ places at the Sportsmans Dinner.

I enclose a cheque/cash (if delivering by hand) for £ _____ (cheques to be made payable to NLCC).

Names of the Guests in my party: _____

Telephone: _____ Email: _____

Booking form and payment to: Ed Clarke – ed.clarke@fastant.co.uk Tel: 07979 538 676

WE REQUIRE YOUR HELP



Newtown Linford Cricket Club is currently applying for funding for a new double-bay synthetic turf practice facility at its Main Street ground, which if successful will replace the artificial practice net.

The current practice net is becoming more and more difficult to upkeep on an annual basis due to the harsher winters and wetter summers, therefore the committee has prioritised the installation (funding permitting) of the new facility.

The cricket at our Club is thriving, particularly on the junior front, but weekly practices and matches regularly have to be cancelled due to unfit playing surfaces (weather).

The establishment of a guaranteed double-bay artificial surface will enable us to provide guaranteed practice and coaching sessions, advertised in Newtown Linford and the surrounding Charnwood villages, with confidence.

Junior cricket, in particular which has grown by 14% in the last two years, is critical for the continuity of the Cricket Club and will enhance the sense of community and support the role the Cricket Club plays in the local rural area.

We pride ourselves on our ground and infrastructure but our current practice facility is not in keeping with this and it is time to action accordingly.

However, to assist our funding bid, we require letters of support from local residents. Can you help? If so then please write your letter of support, reasons why and send the signed letter to Jon Dale, Chairman, Newtown Linford CC, c/o 4 Lockyemead Drive, Desford, Leicester. LE9 9JW.
Thank you in advance.



Advance April fixture dates 18.4.15 Newtown Linford v Cropston Division 1 25.4.15 New Linford 2 v Quorn Division 3
--

Jon Dale, Chairman
Newtown Linford CC
jonrdale78@gmail.com

Village Ramblers

MEET: Opposite the Village Hall, to depart at 2pm

Walks are usually between 4-5 miles. Please wear walking boots/shoes.

14th March

Toby and Felicity.

245298

Enquiries to the walk leader.

Walk to Benscliffe - February Walk

The February ramble this year fell on Valentine's Day. There were twelve of us, including two who joined part of the way round. For a winter's day, the weather was reasonable, if sunless – not too cold, and only a short burst of rain soon after we set out. From the Village Hall we took the footpath from Main Street up into Bradgate Park and walked along the edge of the park to Hunt's Hill. We then followed a path through Rough Hill Woodlands and explored part of Benscliffe Wood (with permission from the owners). Retracing our steps through Rough Hill Woodlands, we returned through the Park via the War Memorial.

The photograph shows the ramblers in front of Pillar Rock in Benscliffe Wood - part of a Site of Special Scientific Interest, due to the special and uncommon varieties of lichen growing on the rocks.

Claire Costello



1st Newtown Linford Brownies Visit from the local Karate Kid

In November 2014, Lucy Whitfield came to visit the Brownies. She gave them a demonstration and taught them some basic karate moves. Lucy is the World Karate Champion, winning a GOLD for England at the World Championships in 2012. This medal is the equivalent to an Olympic medal as Karate currently is not an inclusive martial art for the Olympic Games. But this could change as the World Karate Federation bids to have it included.

Keria Perry our Brownies Reporter said"Lucy showed us a Kata which had 64 moves! I don't know how she remembers them all! She taught us how to punch and kick! It was great fun. My dad does Karate and I have my own karate 'Gi' (pronounced ghee) which I wore when we were doing the punches and kicks. I hope I do karate when I'm older and can hopefully show Lucy my moves if she visits us again



First Woman Bishop arrives in the Church of England

The Rt Revd Libby Lane became the first woman to be consecrated as a Bishop in the Church of England on Monday, 26th January. At a York Minster service presided over by the Most Revd Dr John Sentamu, Archbishop of York, Libby became the 8th Bishop of Stockport, a Suffragan (assistant) Bishop in the Diocese of Chester. Speaking at Stockport Town Hall, when her appointment was first announced on 17 December, 2014, Libby Lane said: "I am grateful for, though somewhat daunted by, the confidence placed in me by the Diocese of Chester. This is unexpected and very exciting. I am very conscious of all those who have gone before me, women and men, who for decades have looked forward to this moment. But most of all I am thankful to God.

"The Church of England is called to serve all the people of this Country and, being present in every Community, we communicate our faith best when our lives build up the lives of others, especially the most vulnerable. I am excited by the possibilities and challenges ahead." Libby Lane was ordained Priest in 1994 and served a number of roles in the North of England. She served her Curacy in Blackburn Diocese and, in York Diocese, served as a Hospital Chaplain and as a Chaplain in further education. Moving to the Diocese of Chester, Libby served as a Team Vicar in Stockport before becoming Vicar of St Peter's Hale and St Elizabeth's Ashley, in 2007. In 2013, Libby

was elected by the North-West Dioceses as one of the first eight clergy women to sit as Participant Observers in the House of Bishops of the Church of England. She also served as Family Life Officer in York and as Chester's Assistant Diocesan Director of Ordinands, advising and supporting people thinking about Ministry in the Church of England. January 2010 saw her take on the role of Dean of Women in Ministry in Chester Diocese. When the new Bishop of Stockport was announced, the Archbishop of York predicted that Libby would "exercise her Episcopal Ministry with joy, prayerfulness, and trust in God."

The Archbishop of Canterbury, the Most Revd Justin Welby, said: "Her Christ-centred life, calmness and clear determination to serve the Church and the Community make her a wonderful choice." The Bishop of Chester, the Rt. Revd Dr Peter Forster, who led the nomination process, confirmed: "As the first woman Bishop in the Church of England she will face many challenges as well as enjoying many opportunities to be an ambassador for Jesus Christ. I have no doubt that she has the gifts and determination to be an outstanding Bishop."

Bishop Libby succeeded the Rt. Revd Robert Atwell, now the Bishop of Exeter. Her husband, George, with whom she was ordained in 1994, is Coordinating Chaplain at Manchester Airport. They have two grown up children.

E.W. Goddard & Sons

(Established 1970)

**QUALIFIED PLUMBERS
Bathroom and Tiling
Specialists**

**All Building Work
and Renovation**

305 Markfield Lane
Markfield LE67 9PR

Telephone

**01530 245316 or 0116 2311672
07961 319908 or 07961 319907**

Peter Henton

**Domestic Appliance
Repairs**

Ex Zanussi Senior Engineer

Tel 0116 2896529

Mobile

07711 265414



**Professional carpet &
upholstery cleaning and repair
services**

- ◆ Curtains cleaned in situ
- ◆ Expert spot & stain removal
- ◆ Guaranteed 5 year anti-stain policy
- ◆ Hand finishing of swags & tails
- ◆ Mattresses deep cleaned
- ◆ Pest control, unpleasant or destructive pests removed

Telephone 0800 328 2927

www.safeclean.co.uk

**PRIVATE AND
COMMERCIAL**

INTERIOR / EXTERIOR

A.B. SHERRIFF

Established 1988

**PAINTER &
DECORATOR**

**42 BRADGATE DRIVE
WIGSTON, LEICESTER**

Telephone 0116 288 1048

Mobile: 07719 366 569

BRADGATE TEAM SUNDAY SERVICES—March 2015

DATE	GROBY	RATBY	NEWTOWN LINFORD
1st March	8.00am Holy Communion (LC)	8.00am Holy Communion (PH)	
2nd Sunday of Lent	9.30am All Age Worship (KW)	10.00am Worship 4 All (PH)	10.30am Holy Communion (LC)
	6.30pm Holy Communion (LC)		
8th March			8.00am Holy Communion (PH)
3rd Sunday of Lent	9.30am Holy Communion (LC)	10.00am Morning Prayer (KW)	10.30am Holy Communion (MS)
	6.30pm Evening Prayer (PH)		
15th March	8.00am Holy Communion (PH)		
Mothering Sunday	9.30am Morning Worship (LC)	10.00am Family Communion (FB)	10.30am Family Service (PH)
	6.30pm Holy Communion (LC)	6.00pm Holy Communion (PH)	
22nd March			8.00am Holy Communion (LC)
5th Sunday of Lent	9.30am Holy Communion (LC)	10.00am Holy Communion (PH)	10.30am Morning Prayer (KW)
	6.30pm 4SE		
29th March	8.00am Holy Communion (LC)		8.00am Holy Communion (PH)
Palm Sunday	9.30am Holy Communion (LC)	10.00am Special Service (FB)	10.30am Holy Communion (PH)
	6.30pm Evening Prayer (PH)		

CHURCH REGISTERS



Weddings

21st February ~ Peter Alan Norris & Emily Jean Copping

Baptisms

None

Funerals

28th January ~ Clara Mona Cross, formerly of The Blossoms, Markfield

Church Contact Details

Team Rector Revd Dr Peter Hooper 0116 239 4606
 The Rectory, 23 Ferndale Drive, Ratby, LE6 0LH
 Email: peter@hoopers.orangehome.co.uk

Team Vicar Revd Louise Corke 0116 231 3090
 58 Pymm Ley Lane, Groby
 Email: words.th@talktalk.net

Parish Office: Bekki Williamson (9am - 11am weekdays)
 0116 239 3768 Email: office@bradgateteam.org.uk



Regular Events

Bell ringer's practice: Monday 8pm

MIDWEEK COMMUNION SERVICES—March

NEWTOWN LINFORD	Thur	8am	5th			
GROBY	Wed	9.30am	4th	11th	18th	25th
RATBY	Thur	9.30am		12th		26th

Easter Flowers

During the year and on special church days the willing band of ladies keep the church bedecked with lovely flowers but we wondered if there was anyone else who would like to give to the FLOWER FUND so that this Easter (5th April) we can have lovely lilies in our church.

If you would like to give please hand your donation to Sue Howard Main Street, Janet Neaverson 6 Grey Crescent , in church to Sheila Langton or leave in an envelope on the offertory dish

Janet Neaverson

Holy Week Monday 30th March



We will be showing once more The Terminal, the film that we have been using as the base of our Lent course. Come to along to see this film even if you haven't been able to join us for the course itself. 7.30pm in Ratby Church

Holy Week Tuesday and Wednesday

Following on from last year's success, we will be installing into Ratby Church a series of Prayer Stations to reflect some of the key moments and points of the Easter Story. Starting on Tuesday evening at 7pm, the Church will also be open all day on the Wednesday from 10am. This is an opportunity to place prayer, reflection and some quiet space at the heart of Holy Week.



Maundy Thursday 2nd April

Bishop Tim warmly invites anyone who would like to join him in being part of the Chrism Eucharist in the cathedral. In recent years a number of people have told him that they would have liked to have come but were either unaware of the service or assumed that it was a 'clergy only' occasion.

He states that he passionately believes that it is not appropriate for this service to be confined to clergy, but it is an occasion when all the people of God are warmly invited to part of a sharing in the gift of Christ's presence in bread and wine at the heart of Holy Week. He experiences, from these occasions, a strengthening and renewing of his ministry and it is his wish that it might become a major diocesan event.

Celebration of the Last Supper, a Bring and Share Meal

Ratby Church at 7pm

We are celebrating Maundy Thursday this year with a communal Bring and Share Meal. With a focus to the Last Supper that Jesus shared with his disciples, this will be followed by a simple Holy Communion, a stripping of the altar, and a reflection on the events in the Garden of Gethsemane.

Everyone is welcome to attend, Further details from Revd Peter 1116 239 4606

**CHURCHES
TOGETHER
IN RATBY**

Good Friday 3rd April Activity Day

Registration will be in Ratby Church at 9.45am along with an opening activity. We will then be offering a variety of crafts and cooking in the church rooms. The children will return to the Church for lunch (packed lunch required), to watch a film and learn about the Easter story. The day will finish with a short service between 1.45pm and 2.15pm. Family and friends are welcome to join us for this service.

The activities in the Church rooms are for school aged children. Activities for preschool children who are accompanied by an adult will take place in the Church between 10.30am and 12noon as part of our Young Families activities.

**In the evening there will be a reflective Good Friday Evening
Service 6pm Start at**

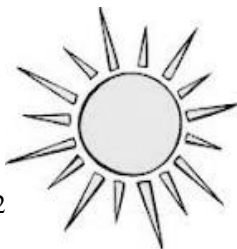
Newtown Linford Church

an opportunity for a quieter space this special day

Please contact Revd Peter for further details (0116 239 4606)

EASTER DAY

**Are you an early riser ?
Easter Day Sunrise Communion
6.00am. Ratby**



Hopefully this will allow us to start in the 'dark'
and finish in the 'light' of the Easter Dawn.
A perfect way to begin the celebration of Easter

From The Records

I have been looking at the Village Records for the late 70's and discovered an item that links with today. There is a formal letter which was sent to all the customers of the butchers shop in Anstey owned by Mr Johnny Walker who lived on Main Street, Newtown Linford. He was retiring and the shop was being taken over by Mr Barrie Till. The family still run the shop, unfortunately Mr Barrie Till died on the 2nd February 2015.

I looked further and discovered that the places to eat have changed in the last 30 years and also the contents of their menus have altered.

In April 1977, The "Bradgate Grill Room" at the **Bradgate Hotel** opened with a new menu

Starters - Soup 25p, Prawn Cocktail 60p, Pate 60p

Mains: Rump steak with everything followed by Ice Cream/Apple Pie/
Cheese and Biscuits £2.30

Scampi etc £2.10

Fillet of Plaice £1.60

Sunday Lunch with a glass of wine and VAT £2.25

June 1978 gave us what was on offer at the **Grey Lady Restaurant**

For a set Dinner

Starters of Melon Frappe or Tomato Soup

Oeufs Mayonnaise, Filets of Sole Mornay

Mains - Entrecote Chasseur, Caneton a La Orange, Escalope de veau
Suisse

Sweets From the Trolley or Cheese and Biscuits

Coffee

All for £5 including VAT

David and Marion Smith took over the Johnscliffe Restaurant and Hotel in May 1978

Bracken Hill Restaurant

Dinner Menu Tuesday to Friday £4 including VAT Saturday £4.50

10% service charge will be added to the bill

Starters: Soups, Bracken Hill Soup, Asparagus Soup

Fruit Juices, Prawn Cocktail, Smoked Mackerel and Horseradish

Sardine Salad, Egg Marie Rose, Melon Cocktail in Ginger Wine

Fish - Fried Whitebait, Poached Scampi with Mushroom Sauce

28 Goujons of Plaice and Tartar Sauce, Seafood Pancake, Chicken &
Duck Pate

Main Course - Fish as above, Roast Duckling, Roast 1/2 Chicken, Pork Cutlet, Saute Lambs Kidneys, Grilled Sirloin Steak, Grilled Rump Steak
Sweets - Green figs in Brandy Sauce, Hot Cherries and Ice Cream (25p extra), Black Forest Gateau with Rum Sauce, Sherry Trifle with cream, Fruit Pie and Cream, Cheese Board 30p extra
Coffee

Johnscliffe Restaurant

Starters - Prawn Cocktail 95p,
Smoked Trout £1.25, Snails in their shells with garlic butter stuffing £1.75, Hors D'Oeuvres £1.50

Soups - Minestrone 45p, Lobster Bisque 80p, Consomme 80p

Fish - Trout £2.75, Sole Bonne Femme £3.50, Scampi £3.50

Grills: Fillet of beef £4.25, Entrecote £2.95, Gammon £2.25, Lamb Chop £2.50

Vegetables and potatoes 95p, salads 40p

Prices without VAT



There have been many alterations at the Bradgate Hotel since 1977, extensive building and refurbishment including the special Pizza Oven, outside meals and BBQ

The Grey Lady is still run by the same owners.

Both the Johnscliffe and Bracken Hill sites were sold to developers and now provide more homes in the Village.

Looking at the menus you can see feeding choices have changes since 1977. The cost of eating out has risen like everything else. Some food more than others.

I wonder what the next 30 years will bring.

Janet Neaverson



Newtown Linford Primary School

Once again we have had a very busy term! I know that the snowy weather made life very interesting for us all! Of course our children enjoyed the opportunity for

building snowmen and snowball fights aplenty! Our wonderful location also meant we were able to enjoy the snowy wonderland of Bradgate Park. We had a most enjoyable, if a little chilly, morning in these beautiful surroundings.



All three of our classes have shared their learning with family and friends this half term. We have been very proud to see the confidence and talent which our youngest to oldest children show. It was interesting to learn about how fashions have changed through the years, to understand more about Roman culture and also to be retold the story of the Chinese New Year. We are very grateful to the Village Hall Committee for enabling us to perform our assemblies in



the Village Hall. Being able to perform on such a large stage is an experience not many Primary School children have.



We have been working hard to keep our parents involved in how things are taught within School and recently had an open afternoon sharing how we teach handwriting across the School (a strength of our school as recognised by Ofsted!)



Reasoning is an important aspect of mathematics and we shared with parents at another open afternoon how we justify our opinions, make and test predictions, conjecture, search for patterns and relationships, make and investigate general statements by finding examples that satisfy it and disprove by finding counter-examples.



Once again we have been involved in work with ENRICH which is a Partnership between all the Primary Schools which feed into South Charnwood High School, Brookvale High School and Groby Community College and the Secondary Schools themselves. Our Y3 children took part in a cake decorating competition within School and the two winners experienced a cookery lesson at Brookvale High School. They brought back to School a wonderful aroma from their rolled pizza pieces!



I know many of you take great delight in keeping up-to-date with the happenings of our School, having either attended the School yourselves or had children who have done so previously. Our

School website has many photographs of the experiences our children have shared on our Gallery page and we would love to share these with you.

www.newtownlinfordschool.org

Myself and Mrs Blythe enjoyed taking our turn at running the Village Coffee morning and were superbly supported by children from the School. It was lovely to see different generations from the Village socialising together. I know the children also enjoyed their cake reward too!



As a School, outdoor learning is one of our core curriculum drivers and we have enjoyed developing close links with the staff at Bradgate Park over the past two years. We are now very excited to also be developing links with the National Trust property Stoneywell at Ulverscroft. Our School will shortly be visiting and producing work which will be displayed there over the summer period. We are also currently in discussion with the staff as to how we can develop the opportunities our children have within the grounds.



Our Easter Church Service will be held on Wednesday 25th March at 9.30 and we would warmly welcome friends from the local community to join us.



MARTIN ALLEN

**FLOORING &
FRENCH
POLISHING**

**YOUR LOCAL
FLOORING SPECIALIST.**

All timber floors laid

**All existing timber floors sanded
and refinished**

Any colour or finish

**Free quotations
call Martin.
0116 2165107**

SYKES JEWELLERS

**WATCH, CLOCK &
JEWELLERY REPAIRS**

**WATCH BATTERIES AND
STRAPS FITTED WHILE
YOU WAIT**

**8 BRADGATE ROAD, ANSTEY
TEL: 0116 236 2510
sykesjewellers.co.uk**



TAI CHI CLASS

Ancient solutions for modern living

A new Tai Chi class, supported by Age UK and Hinckley and Bosworth Borough Council, has recently started at Markfield Community Centre

**on Tuesday afternoons
from 4pm to 5pm.**

Whether it's for improving your health, strength, balance, posture, flexibility or simply to ease the tensions of life ... come and join in and discover why millions of people around the world choose Tai Chi.

**The class costs £5 per session and is led by Nasser Butt.
He can be contacted on 07792242150.**



THE LINFORD

66 Main Street, Newtown Linford
Tel: 01530 244012
thelinford.co.uk

Visitors Welcome!



Refurbished Function
Room
Free hire (when booked
with the bar)

Sky & BT Television
Showing top sporting events

Quiz
Every Wednesday from
8:30pm

Table Tennis Club
Every Thursday

Free Wi-Fi

Guest Beers



THE POST OFFICE TEA ROOMS NEWTOWN LINFORD

We now make our own hand-made Truffles & Chocolates
which can also be ordered and boxed

Special chocolates

550 Bradgate Road • 01530 242 709

Fit Tips for Busy Parents, Grandparents and Carers

Becoming a parent involves many changes in ones life, not least the amount of time you get to spend exercising and eating right.



Prior to having my daughter I used to spend at least an hour to an hour and a half in the gym, 5 or 6 days a week. Nowadays between being a mum and teaching exercise and nutrition, I don't have the luxury of so much time. Therefore, I've had to find ways to get in my workouts and healthy eating to fit into my current lifestyle.

Revive Your Three-Piece Suite!

Have Your
Existing Cushions
Professionally
Re-Filled



There's no need to throw out your sofa or easy chairs just because the cushions look a bit battered and bruised!

We will supply and cut high quality foam inserts to give your furniture a complete make-over!

Call for a quotation today!

Simon Shuttlewood
quality upholstery

7 Edward Street, Anstey, Leicester LE7 7DP
Telephone: 0116 234 0350

Here are some tips I would love to share with you:- Whereas before children you might have done your workout all in one go, now you might find yourself having to break it up into segments throughout the day, and that's perfectly okay. Whilst waiting for the kettle to boil, do 15- 20 squats or 10 push ups or 20 jumping jacks. It all helps.

If you have a particular area of the body you feel needs more work, focus on that earlier in the week. That way you will feel like you've got it out of the way and ideally, you will be inspired to do a second day of that area later in the week. Be realistic about how consistently you can workout and create a plan to incorporate that. If you can only workout twice a week, perform a full body workout each time. If you can workout four or five times a week, switch between upper and lower body and don't forget those abs !!

Nutritionally, do resist the urge to eat off your child's plate. You'd be surprised how many extra calories you eat during a day by picking . In the morning, take 5 minutes to chop up some carrot, cucumber and peppers into sticks. This will give you and your family healthy snacks to keep in the fridge instead of reaching for a biscuit or sweets.

Email me with any questions on Forestfitstudio@gmail.com or www.forestfitstudio.com

News from David Snartt

The Green Plaque Award Scheme.

I was delighted to see the name of Charles Bennion on the shortlist of twelve nominations. He was the entrepreneur and philanthropist who gave Bradgate Park to the people of Leicester and Leicestershire for their quiet enjoyment. Residents will now be able to vote for up to six of their favourite people and places. The six with the most votes will be awarded a Leicestershire County Council Green Plaque.

For a full list and to vote by Monday 6th April visit

www.leics.gov.uk/greenplaques<<http://www.leics.gov.uk/greenplaques>> or pick up and drop off a voting form at any county library or post a completed form to Green Plaques, Communities & Wellbeing, Room 500, County Hall, Glenfield. LE3 8RA.

Register to Vote.

Thousands of letters have been sent out to residents in Charnwood reminding them to make sure they are registered to vote. As well as May 7th being the General Election, there are also elections for Charnwood Borough Council and Parish Councils.

Letters have been sent to households to check that the Council is aware of all eligible voters at each address. Anyone aged 16 and 17 can also register to vote so as soon as they turn 18 they will be put on the electoral register. The last day to register for this year's elections is 20th April. For more information about registering to vote please visit www.charnwood.gov.uk/yourvotematters

Dementia Books on Prescription.

Dementia books are now available in Leicestershire Libraries. This collection of 25 books have been put together by dementia healthcare experts, people with dementia and carer groups. The books provide support and advice for people with dementia and their carers and are available for anyone to borrow free-of-charge from their public library.

Collections are available at main libraries, including Loughborough (0116 3052420). The books can also be requested for free and sent onto any other Leicestershire library for users to pick up at their convenience.

To see the available titles log onto

www.reading-well.org/books/books-on-prescription/dementia

If you need to contact me on any issue write to 10 Groby Lane, Newtown Linford, Leicester. LE6 0HH e-mail david.snartt@leics.gov.uk

36 or telephone 01530 244804.



Newtown Linford Neighbourhood Watch -

A member of the Parish Council



I am writing this at the very beginning of February as by the time you read this I should have been to Costa Rica and be back again unless the Tarantula gets me! Hopefully nothing serious has happened whilst I was away.

A pony was taken from a field in Cropston as I write this. It is bad enough to take saddles, bridles, electric fencing etc. but to take a living creature I find very distressing.

Pam
McMorran
NHW Co-ordinator –



Broughtons

Traditional Lighting & Ironmongery



The Old Cinema Cropston Road
Anstey, Leicestershire LE7 7BP

Tel. 0116 236 5300

www.broughtons.com sales@broughtons.com

Open 7 Days Mon-Sat 9am - 5pm Sundays 10am - 4pm



**THE GREY LADY
KITCHEN & DELI**

6pm-9pm
Every Friday

Fish & Fizz Friday

Every Friday evening enjoy fish and chips and
a glass of fizz for only £ 12 per person.

544 Bradgate Road, Newtown Linford, Leic
01530 245801, info@thegreyladydeli.co.uk

Mona

Clara Mona Swinbank was born on 11th. October 1921 at Priory Farm in Malham in the Yorkshire Dales – a place that was always very dear to Mona throughout her life. Up until her eye-sight made reading difficult she enjoyed her regular copy of ‘The Dalesman’.

Her parents Alice and John had 3 other children: Bernard who sadly died at an early age, Alice and John Bernard.

After attending the local Primary School we believe Mona won a scholarship enabling her to go to further education at the High School. During this time she had a week-end job, albeit unpaid, helping at the Lister Arms, owned by members of her family in Malham.

Having spent her life living on a farm, it was quite natural for her to be interested in farming and she was interviewed for a place at University to study agriculture. Sadly, this came to nothing as the family could not afford to finance it and with the threat of war looming, she was encouraged to train as a nurse.

Sadly, we have little information about her early days as a nurse but we do know she joined the Colonial Nursing Service, now known as the Queen Elizabeth Nursing Service, and was posted to Palestine to



Palestine and Hong Kong medals

train nurses at a time when Palestine was not allowing women in. This period of her life was not without its dangers or events which she preferred



not to dwell on.

A happier chapter in Mona's nursing career was spent in Hong Kong where, by all accounts, she had a whale of a time. Together with her nursing friends she enjoyed an exciting social life and amongst other things, she told Hilda of enjoying riding pillion on the back of a handsome young man's motor-bike. Life in Hong Kong though was cut short when she was diagnosed with TB and had to be brought home to a sanatorium for treatment.

During her time as a midwife Mona came into contact with families who were in extreme poverty. On one occasion, she told of wrapping a new born baby in her own cardigan as the family had nothing else.

In time, Mona came to live in Leicester and at Church one Sunday, she was spotted by one John Cross. Apparently he followed her home and, as they say, the rest is history. They were married at Skipton Parish Church on 21st. January 1956.

They came to live in Markfield Lane and I first met Mona in the 1970s. Both, John, or Jack as Mona called him, and Mona were by now active in both

H2O DESIGN

Pond and Waterfeature Specialist

Complete Pond Maintenance
Pond Cleaning, Filter & Pump Services
Liner, Concrete & Fibreglass Repair
Pond Construction, Waterfeatures,
Aquariums, Fish Health Checks

Call James Rogerson for free quotations on
Mobile: 07843 623498
www.h2odesign.co.uk

Church and Village life and it was through the Women's Fellowship that I really got to know Mona. When the Fellowship decided to start the Welcome Club – a place for senior citizens to come for a chat and coffee after collecting their pension from the Post Office on a Thursday morning – Mona and I became partners on the rota of helpers. We worked together very well and despite putting the world to rights on many occasions, never argued.

John and Mona enjoyed their holidays, both in this Country and abroad. They were keen gardeners too, having a large garden to care for and growing all their fruit and vegetables. In time though, it became too much for them to keep as they would like.

After exploring what life was like at the Markfield Retirement Village they moved to The Village sometime in the early 1990s. I'm sure it took some getting used to, but they made new friends and joined in the life of the Village but still kept their links with NL

Mona nursed John through several illnesses before he died in November 2002 aged 95.

In time Mona resumed her interests within the Retirement Village, indoor bowls, keep-fit, the Poetry group, fund-raising for charity etc. but also still came to All Saints on a regular basis and continued to meet with her friends at what was now called the All Saints' Fellowship.

As time passed, and following several spells in hospital, she also decided to have 24 hour care at home rather than go into a nursing home.

For the final 2 months of her life Mona was bed-ridden but her wish was to spend her last days at home and I'm pleased to say that with much support this was made possible.

Sheila Langton

DIGIVISION SYSTEMS

- Digital Aerials
- Satellite/Sky+HD
- Retunes/Setups
- TV/Sky Points
- Phone Points

sky



freesat

Freeview

- CCTV
- Cinema Systems
- TV Wall Mounting
- AV/HDMI Distribution
- Data Points & Cabling

Faults & Diagnostics - All Work is Meter Tested

Fully Insured and C.R.B. Checked

FRIENDLY LOCAL SERVICE

Tel: 0116 287 1980 Mob: 0793 272 4926

E: info@digivisionsystems.co.uk



THE BRADGATE

NEWTOWN LINFORD



We have a great range of cask ales, an award winning wine list and an extensive range of soft drinks for the drivers and the young ones.

Every Sunday we serve a great pub menu and a choice of 4 fantastic Sunday Roasts with vegetarian options, serving 12 till 6pm every week.

3 Fantastic Offers

Steak Nights

Every Friday Night from 6pm

2 x 8oz Rump Steaks
& a Bottle of Wine £30

2 x 10oz Sirloin Steaks
& a Bottle of Wine £37.50

Served with Hand-Cut Chips,
Homemade Onion Rings,
Field Mushroom & Choice of
Peppercorn or Blue Cheese Sauce

Wine is choice of any of our house wines -
Shiraz/Cabernet Sauvignon/Chenin Blanc/
Chardonnay/White Zinfandel

Pizza Offer

Available 12 till 9pm
Monday to Friday

2 Pizzas
for £15

Fixed Price Menu

Available
Monday to Thursday

12 till 3pm & 6 till 9pm

2 Courses
3 Courses



visit www.thebradgate.com email contact@thebradgate.com or call 01530 242239

37 Main St, Newtown Linford, Leicestershire LE6 0AE

KEITH SMITH (ANSTEY) LTD



6 STADON ROAD ANSTEY LE7 7AY - TEL: 0116 2362395 - sales@keithsmithltd.co.uk

FAST FREE LOCAL DELIVERY



BOSCH SMS50T02GB

- Dishwasher
- ✓ 12 Place Settings
 - ✓ 5 Programmes
 - ✓ Half Load
 - ✓ Noise Level 50db
 - ✓ A+AA Rated

Now Only **£279.99**



BOSCH WAB28162GB

- Washing Machine
- ✓ 1400rpm Spin Speed
 - ✓ 6kg Load Capacity
 - ✓ A+++AB Rated
 - ✓ Express Wash
 - ✓ 15 Programmes

Now Only **£299.99**



HOTPOINT WMAQL641P

- Washing Machine
- ✓ 1400rpm Spin Speed
 - ✓ 6Kg Load Capacity
 - ✓ Quick Wash
 - ✓ 16 Programmes
 - ✓ A++AB Rated

Now Only **£299.99**



SIEMENS WM14E461GB

- Washing Machine
- ✓ 1400rpm Spin Speed
 - ✓ 7Kg Load Capacity
 - ✓ 15min Wash
 - ✓ 5 Year Guarantee
 - ✓ A+++AB Rated

Now Only **£399.99**



IEFF U12S53N3GB

- Double Electric Oven
- ✓ Multifunction Cooking
 - ✓ A-20% Rated
 - ✓ 67 litre Main Oven
 - ✓ CircoTherm Fan
 - ✓ H88 x W59.4 x D55

Now Only **£549.99**



IEFF B12S53N3GB

- Single Electric Oven
- ✓ Multifunction Cooking
 - ✓ A-20% Rated
 - ✓ 67 litre Main Oven
 - ✓ CircoTherm Fan
 - ✓ H59.5 x W59.5 x D55

Now Only **£379.99**

Fitted Kitchens

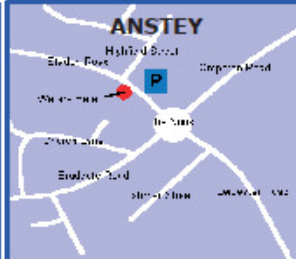
We are pleased to announce that we are now agents for A.W.E Kitchens and Bedrooms Who specialise in Bespoke made to measure kitchen & bedroom furniture
Please call in for further details

Free Professional Installation*

Free Removal of Old Appliance

Free Removal of Packaging

*To Existing Fittings



Cardiac Arrests and the Village Defibrillator

In November about 30 villagers attended a talk given by Martin Fagan of the Community Heartbeat Trust on the Village defibrillator. This is a machine designed to restart the heart in the event of a Cardiac Arrest.

He explained that Cardiac Arrests are generally unmistakeable: a sudden collapse of the patient is symptomatic. The "kiss of life" is no longer the recommended treatment: instead "chest compressions" should be given. Press down on the bottom of the patient's breastbone at a rate of around 120 per minute (the "Saturday Night Fever" anthem "Staying Alive" is about the right rhythm). But before doing this it is important to get help. Initially you should dial 999; remember that 999 works on ALL mobile phone networks so you may be able to use your mobile even if you would normally have no signal.

It will take some time for the ambulance to arrive (their target is 75% of calls in 8 minutes), so you should get hold of the Village defibrillator to help get the heart restarted. Telephone (01530) 382385 and one of the trained village volunteers will answer the phone: explain that you need the defibrillator, and give them your address.

Then give Chest compressions. Only if the person is not breathing and does not have a pulse. Giving chest compressions is hard work. You will not be able to do it continuously for the time it takes for the defibrillator to arrive, let alone the ambulance. So get help - telephone a neighbour if necessary. And if possible arrange for someone to be at the roadside to signal to the ambulance/village volunteer, especially if it is dark - we all know how curious the house numbering is in the village.

With this copy of the Magazine you will find three sticky labels which we suggest you put on your telephone handset to remind you what to do in an emergency, although we hope you will never need it.

Toby Manning

Cardiac arrest, also known as **cardiopulmonary arrest** or **circulatory arrest**, is a sudden stop in effective blood circulation due to the failure of the [heart](#) to contract effectively or at all. A cardiac arrest is different from (but may be caused by) a [heart attack](#), where blood flow to the muscle of the heart is impaired.

Arrested blood circulation prevents delivery of [oxygen](#) and [glucose](#) to the body. Lack of oxygen and glucose to the brain causes [loss of consciousness](#), which then results in [abnormal or absent breathing](#). Brain injury is likely to happen if cardiac arrest goes untreated for more than five minutes.^{[3][4][5]} For the best chance of survival and neurological recovery, immediate and decisive treatment is imperative.^[6]

Cardiac arrest is a [medical emergency](#) that, in certain situations, is potentially reversible if treated early. Unexpected cardiac arrest can lead to death within minutes: this is called [sudden cardiac death](#) (SCD).^[1] The treatment for cardiac arrest is immediate [defibrillation](#) if a "shockable" rhythm is present,

while [cardiopulmonary resuscitation](#)(CPR) is used to provide circulatory support and/or to induce a "shockable" rhythm.

Brookvale High School. The students of Mississippi House are thrilled to announce another spectacular year of fund raising, throughout 2013/14, culminating in over £4,000 being raised for both Cancer Research and LOROS.



Brookvale High School
Achievement Care Excellence

Students (and staff) took part in a variety of fund raising activities including:

- Our annual performance of 'Brookvale's Got Talent!'
- Bucket collections
- Staff Christmas Show
- Year 9 sponsored walk to and around Bradgate Park

We are extremely proud that one of our Year 9 students, Tom Burbage, (who has now moved on to Year 10 at Groby College), raised a staggering amount of money for this cause, hence the decision to split the proceeds this year between the two Charities.

We were delighted that representatives from the two Charities were able to come along to Brookvale, to receive the cheque from our Head-teacher, Katie Rush, and a selection of last year's Year 9 students – now Year 10 at Groby College, along with our current Year 9 House Captains

This photograph was taken in our new Dining Hall, which opened at the beginning of this academic year, and has been a marvellous addition to our school site, providing extra seating for 180 students, to enjoy dining at break and lunch times, alongside the wonderful backdrop of Bradgate Park.

Well done, Mississippi!! Another year of tremendous fund raising success. Here's to the next!



Newtown Linford Parish Council
Lydia Knott
Clerk to the Council
t: 01530 242522; e: lydia.knott@hotmail.co.uk

Police and Neighbourhood Watch: There was no Police presence at the February meeting. The only crime reported was a van broken into on the Main Street and tools stolen.

Highways, footpaths and traffic: Once again there are reports of dogs fouling the pavement between the end of Groby Lane and the village shop.

Planning: The following have been granted by Charnwood Borough Council during February. Amendment to residential curtilage at 50 Warren. Erection of Summerhouse at 50 Warren Hill. Erection of first floor extension at 20 Warren Hill. Work on trees the subject of a TPO at 24 Warren Hill.

It is very likely that a Parish Councillor will be retiring in May and so there will be a vacancy. Please let me know if you would be interested in becoming a Councillor. I am happy to have a chat with anyone about what is involved. Trainings are available usually held in Anstey. Or come to a Council meeting and see the matters that are discussed. Alternatively speak to the Chairman. Vice Chairman or one of the other Councillors.

The March meeting will be on the 23rd and the April meeting is on the 27th. Both meetings at 7 p.m. in the small room of the Village Hall. Everyone welcome.



IDC Home Maintenance

Painter Decorator and Property Maintenance

NO JOB TOO SMALL

**From changing a light bulb to complete house re-decoration.
For all the jobs you need to do but simply don't have time.**

For a free quotation please call Ian on:

01530 245461 or 07885 541428

3 The Nook, Markfield, Leicestershire

Web site: www.idchomemaintenance.co.uk

Full Tradesman Liability Insurance held



Booking of Village Facilities

**To book the Village
Hall (Residents only)**
call Pat Wood on
242251.

**To book the Sunday
School Room**
£10 per hour,
£15 for two hours,
£20 for 3 hours,
£45 per day

Call Casey Pearson on
249259

Foot Problems ?

**Corns, Calluses, Veruccae, Hard Skin, Nail
Problems, Athlete's foot,
Sore and Cracked Heels.**

**Have them treated
Professionally in the comfort of
your own home**

Ring **Alistair Watt** MCFHP.MAFHP.
Foot Health Specialist

**Tel 01530 243009
or 07802 777221 .**

**Evenings and weekends
available**

Service with a smile -



Contributions to Village Magazine

Can we have your contributions for the **April 2015** issue by **15th March 2015** please. **Send to the Editor, Carole Heubeck, 5 Grey Crescent, Newtown Linford (01530 244790).**

E-mail heubeck111@btinternet.com & heubecks@googlemail.com

Please could you send any emails to the above email addresses. If you do not receive an acknowledgement of your email - please contact Carole, the Editor direct on the above number to check we have received it.

The opinions expressed by the contributors are not necessarily those of the Editors and they reserve the right to amend, shorten or not print any article or advertisement submitted for publication. Whilst every effort has been made to ensure the accuracy of the information printed in this magazine, and advertisements are accepted in good faith, no liability can be accepted for loss, damage or claim of any kind incurred by the reader



David Allen
For Your
VERMIN CONTROL



RATS, MICE, MOLES, RABBITS, WASPS, ANTS, WOODWORM.

**DO YOU HAVE A PROBLEM WITH ANY OF THESE?
LET ME SOLVE IT FOR YOU?**

10 ASHBY ROAD, SHEPSHED, LE12 9BS
Telephone: 01509 502664

24 HOUR SERVICE

CYRIL JENNINGS & SON
Carpenters, Joiners & General Builders

Reg. Office.

30 Roecliffe Road, Woodhouse Eaves.
Loughborough, Leics LE12 8TN

Telephone: (01509) 890466

Mobile: 07850 303948

J.K. Jennings – Proprietor

Mike Catlin – Quantity Surveyor

Consult

WALTER MILES

(Electrical Engineers) LTD

Est. 1928

For All Your Electrical Requirements

**LIGHTING, HEATING, POWER, REPAIRS, RENEWALS
AND MAINTENANCE**

Member of the Electrical Contractors' Association and N.I.C.E.I.C

Office and Works Marshall House, West Street, Glenfield, LEICESTER, LE3 8DT
Telephone 0116 287 2400 Fax 0116 287 252
E-Mail office@waltermiles.co.uk

Anstey & District Funeral Services

Independent Funeral Directors
and Monumental Masons
JGWright



We can take care of every
detail, advise and help you on
each and every step of the way.

- *Traditional hearse & fleet*
- *Flowers arranged for you*
- *Horse drawn carriages,
motorcycle hearse &
alternatives available*
- *Memorial showroom*
- *Extensive car parking*
- *Private catering suite &
private chapels of rest*
- *Funeral Plans available*
- *Independent, 24hr Service*



Funeral arrangements can be made in the
comfort of your own home if preferred

24hr Service - 0116 234 0548
Talbot House, Leicester Road,
Anstey, Leicester, LE7 7AT
www.ansteyfunerals.com

Golden Charter
Funeral Plans

