

# **ISSUE NUMBER 79**

## **CONTENTS**

### **November 2010**

<b>Church News</b>	<b>3/4, 22/23</b>
<b>All Saint's Fellowship</b>	<b>5</b>
<b>Bradgate Drama Society</b>	<b>6</b>
<b>Christmas Fayre</b>	<b>8</b>
<b>Gardening Club</b>	<b>11</b>
<b>Choral Society</b>	<b>13</b>
<b>Seniors Christmas Lunch</b>	<b>17</b>
<b>Ramblers</b>	<b>18</b>
<b>Santa Fun Run</b>	<b>20</b>
<b>Operation Christmas Child</b>	<b>21</b>
<b>Bradgate Flower Club</b>	<b>21</b>
<b>Primary School Page</b>	<b>25</b>
<b>Festival Weekend</b>	<b>26/31</b>
<b>From the Records</b>	<b>32</b>
<b>Remembrance</b>	<b>34</b>
<b>Neighbourhood Watch</b>	<b>39</b>
<b>Parish Council</b>	<b>41</b>

# pre-printed adverts



***Pastoral Letter from David Collins, Team Reader***

It happened again the other day. I was doing the washing up and a glass slipped out of my hands hitting the floor and turning into a jigsaw puzzle. It is a fact that in the Collins' household we do not have a single full set of cups, mugs, glasses, plates etc and I think I'm responsible for most of it. I don't do it on purpose, of course, but these accidents seem to have a regularity about them.

I thought about these incidents again when I happened to read this verse in Isaiah chapter 51 some time later: *And I have put my words in your mouth and hidden you safely within my hand. I set all the stars in space and established the earth. I am the one who says to Israel, 'You are mine!'*".

It reminded me that when we hand things over to God we don't have to worry about them any more. It can be anything and should be everything. I remember the feeling of relief when our two children were baptised as babies. I couldn't work out what it was for a while and then it came to me. No longer was I on my own and solely responsible for their safety. I had put them into God's care and I knew that they would be safe with him. We could work together to give them a brighter future.

Martin Luther once said, "I've held many things in my hands and I've lost them all. But whatever I've placed in God's hands I still possess". I've learned the hard way – but at least I've now learned – that whatever I give over to God be it hopes, worries, plans, desires, bad memories, fears, possessions, my life, he will deal with it allowing me the freedom to enjoy a peace and freedom which only he can give.

It's the same for all of us and perhaps one of the reasons we can call God 'Our Father', as he wants to care for us and make sure we are either helped out of troubles or led away from them in the first place. You may wish to try it now, talk to God about your concerns, put them into his hands for safe keeping, he will understand, he knows what has happened in the first place. He wants to take our burden from us and lead us into a happier life. My crockery might not stay in complete

sets, but I know that the more important aspects in life are a whole lot safer than they were and that's what matters.

*David.*

## Team Parish News

### Remembrance Sunday

Remember that these services have different starting times in order to accommodate 2 minutes' silence at 11am. Make sure you are there in good time!



### Advent Lessons and Carols: 28<sup>th</sup> Nov at 6.30pm, at Groby.

Advent is a season rich in meaning; it is one of anticipation and hope, looking for the coming of God. It is not just a preparation for Christmas, but also looks beyond to a time when Jesus will come again. The readings and songs are a cry for God to intervene, to act in our lives and our land, to establish his Kingdom. It will be presented by a joint choir who will lead us in song and prayer. Come and join us to begin Advent together!

### Christmas Tree Festival at Groby 4<sup>th</sup> – 7<sup>th</sup> Dec

This year the theme for the **trees** is Christmas Past, Present and Future and the Church is open on

Sat 4<sup>th</sup> 10.00am – 6.00pm

Sun 5<sup>th</sup> 12 noon – 6.00pm

Christmas **activities** and **refreshments**, along with Father Christmas are in the village hall at Groby

Sat 4<sup>th</sup> 10.30am – 3.30pm

### Festive Fun Concert

Tues 7<sup>th</sup> at 7.00pm





## VILLAGE DIARY

### **November**

3rd Bradgate Flower Club  
13th Ramblers  
25th Seniors Christmas Lunch  
27th Christmas Fayre  
29th Parish Council

### **December**

7th Gardening Club  
9-11th Bradgate Drama Society

### **Regular events**

Sunday Evenings, The Linford -	7 -10.30pm Lady Jane Grey Club
Monday afternoon	Mature Movers fitness class V. Hall
Mondays 8pm at the church	Bell Ringing
Last Tuesday of the month	Gardening Club
1st Wednesday of the month	Flower Club
Thursdays am during school term	Toddlers Group
Thursdays	Welcome Club
Thursdays eve during school term -	Brownies
3rd Thursday	Gentlemen's Lunch Club

## ALL SAINT'S FELLOWSHIP AND WELCOME CLUB

Our last meeting for 2010 was on 19th October when we were entertained by our good friend Anne Halsey.

No further meeting for this year.

Our membership numbers over this last year have declined and our expenses have grown.

As March is the end of our financial year we have decided that this will also be our last and final meeting - after this the Fellowship will close.

We already have two interesting speakers booked for February and March 2011 and we do ask you to join us on these dates and support Mr Brian Johnson on Tuesday 15th February "Living in a Box" and Mr Graham Wagstaff on Tuesday 15th March "Growing veg in a small space"

Please do join us next year for our last two meetings and make these afternoons special

**Welcome Club continues - every Thursday 10.30am**

Last meeting before Christmas is the 16th December

First meeting in 2011 is January 10th.

**Kathleen Prince**



**BRADGATE DRAMA SOCIETY**

*Presents*

**SUIT YOURSELVES**

to suit all ages in

**NEWTOWN LINFORD  
VILLAGE HALL**

**On Thurs. 9<sup>th</sup> December,  
show only, £6 per ticket**

**Fri. 10th & Sat. 11th Dec,  
with supper, ticket £10**

**Bar available every evening**

Tickets available after October 25<sup>th</sup>  
from Gillian Bates,  
Tel: 01530 242375

Doors open: 6.45pm. Curtain up: 7.30pm.

**ON STREET PARKING ONLY**

# SYKES JEWELLERS

## Watch, Clock & Jewellery Repairs

Stockists of  
LOVELINKS Beads  
WHITE ICE Silver jewellery  
DIAMOND RINGS  
WEDDING RINGS

Call in for friendly  
helpful advice

8 BRADGATE ROAD, ANSTEY

Tel: 0116 2362510

[www.sykesjewellers.co.uk](http://www.sykesjewellers.co.uk)

SPECIALISTS IN  
ANTIQUE CLOCK & BAROMETER  
RESTORATION

# COOK'S FARM SHOP

Markfield Lane, Newtown Linford  
01530 242214

**FREE RANGE EGGS  
DUCK EGGS  
FRUIT - VEGETABLES**

**PICKLES AND PRESERVES  
SPECIALITY FOODS**

Pet Foods & Accessories  
Feeds for Horses, Farm Animals and  
Small Animals, Bird Food etc.  
Hay – Straw – Shavings

**LARGE YARD FOR PARKING**

**Mon to Sat 9–6 and Sun 10–1.  
Visa – Mastercard - Switch**



## Professional carpet & upholstery cleaning and repair services

- ◆ Curtains cleaned in situ
- ◆ Expert spot & stain removal
- ◆ Guaranteed 5 year anti-stain policy
- ◆ Hand finishing of swags & tails
- ◆ Mattresses deep cleaned
- ◆ Pest control, unpleasant or destructive pests removed

Telephone 0800 328 2927

[www.safeclean.co.uk](http://www.safeclean.co.uk)

7

## WANSTEAD FLOORING & FRENCH POLISHING

**YOUR LOCAL  
FLOORING SPECIALIST.**

**All timber floors laid**


**All existing timber floors  
sanded and refinished**

**Any colour or finish**

**Free quotations  
call Martin.**

**0116 2249770**

**07973256176**



**Newtown Linford Village Hall**

**Saturday 27th November.**

*11am-12 = Santa's Village Tour.*

*12 -4.30pm = Shopping Experience and Santa's Grotto.*

## ***Traditional Christmas Fayre***

*Santa Claus will be touring the village whilst the church bells ring, with sweets for all the children who greet him, he will then visit The Village Hall on Main Street, where his Grotto will be for children to meet him for Presents and Photo's.*

*This will also be a wonderful event for doing all your Christmas Shopping, whilst enjoying a Glass of Mulled Wine and a Mince Pie and listen to the local Choir singing Carols.*

*The purchase of a Raffle Ticket is also a must, as the prizes are amazing, including:*

**M&S Hamper (Donated by CasePak)**

**The Crown, Anstey, Voucher**

**Broughtons Interiors, Voucher**

**Cooks Farm Shop, Vouchers**

**Post Office Tea Rooms, Vouchers**

**The Grey Lady, Voucher**

**The Village, Voucher**

**Christmas Tree (Donated by Malc Brewin)**

**Sykes Jewellers**

**Stonehurst Farm Park**

**Admission - 50p**

**Contact Amanda on 07973 891399**

All proceeds to Cancer Research. Santa Tour in Memory of Malcolm Gibbins. Thank-you to all Donators and Volunteers.

## Weight loss – ask our local expert

**Q: Hi Joe,  
I've been trying to lose weight for the past 3 years and have tried countless 'wonder diets', why don't I ever lose any weight?  
Catherine, Newtown Linford**



**A: Hi Catherine,**  
In my opinion, diets don't work – especially the faddy diets that you'll find on the cover of almost every women's magazine each month. They advise you to either severely restrict your intake so that you are constantly hungry and thinking about food, or they encourage you to drop whole food groups from your diet which may leave you feeling full but is depriving your body of vital nutrients.

Even if you do manage to drop a few pounds by following one of these diets, you will quickly put the weight back on when you return to your usual eating habits.

If you want to achieve permanent weight loss you need to look at more than just your diet. My motto is 'eat more, exercise less' – and yes I do mean that way around! You need to eat a wider range of nutritious foods and balanced meals and commit to more intensive, shorter exercise routines in order to see real and permanent weight loss.

In my business, Results Weight Loss, the thing that clients find most helpful in their quest to improve their health and fitness is the constant support and motivation that our coaches offer. If you embark on a new healthier lifestyle with your partner or a friend you will find that you both see huge benefits because you will be more likely to support and encourage each other's efforts.

If you would like to find out more about how to avoid the common weight loss pitfalls you can download my free report: "The 10 killer excuses that stop you losing weight – and how to overcome them". Just visit [www.weightlossnewtownlinford.co.uk](http://www.weightlossnewtownlinford.co.uk)

Joe

## GLEBE FARM

Quality Groundwork Specialists  
For both Domestic & Business Customers

**Highways Road Works  
Driveways and Kerbs  
Drainage & Utilities  
Parking Areas & White Lines**

**Ground Excavations & Ground  
Clearances  
Landscaping  
Dry Stone Walling**

If there is anything else that you require,  
Please don't hesitate to ask as no job is too big  
or too small

Safety Policy, Risk Assessments & Method  
Statements available on request

Tel: 01530 831770 Mob: 07970 104837  
Glebe Farm, Green Lane, Whitwick LE67 5EE  
Email [glebefarm@glebeservices.com](mailto:glebefarm@glebeservices.com)  
[www.glebeservices.com](http://www.glebeservices.com)



## DIGIVISION AERIALS



**Confederation of  
Aerial Industries Ltd**  
A quality guaranteed installation at a fair price  
Member C1454

**Freeview**

**sky**

- Digital TV Aerials
- Extra Points
- FM / DAB Aerials
- AV Distribution
- LCD / Plasma TV Wall Mounting Service
- Phone Points
- Storm Damage
- OAP Discount
- Home Networking

**Fully Insured and CRB Checked**  
**Faults and Diagnostics - All Work is Meter Tested**  
**FRIENDLY LOCAL SERVICE**

**TELEPHONE: 0116 224 8045**

**OR MOBILE: 0793 272 4926**

Email: [info@digivisionaerials.co.uk](mailto:info@digivisionaerials.co.uk)

Mark  
Chadwick

P ~ L ~ A ~ S ~ T ~ E ~ R ~ E ~ R

High quality plasterer with 25 years  
experience

Competitive rates.  
All jobs considered.

**For a free quote:-**

**Telephone: 0116 2861057/Mobile:  
07971 978 098**

**Email: [markchadwick@hotmail.co.uk](mailto:markchadwick@hotmail.co.uk)**

10

## Darwins Electrical

Your Local Friendly Electrician



**NICEIC PART P REGISTERED**

Call For Your Free Estimate

01530 249794 / 0791 7062287

Leicester Road, Markfield, Leicester

## Newtown Linford Gardening Club

Our final event of the year is the annual Christmas Party to be held as usual at the home of our Chairman, Sue Pritchard. This will be on Tuesday 7<sup>th</sup> December and will follow the customary 'bring and share'. Would all members please let Sue know whether they are coming on that evening.



The New Year will herald some new and interesting speakers. On 25<sup>th</sup> January Dr Christopher Andrews from Top Lodge Centre in Northamptonshire will talk to us on gardening for wildlife. He is a specialist on birds, working for the RSPB, and, hopefully he will have ideas which will increase the number and species of birds we see in Newtown Linford.

February and March brings to us Stuart Phillips, who will guide us on caring for our lawns, and Rosemary Gandy, the well-known rose grower, to talk about our national flower. In April we make our first local visit – but more about that later.

We have welcomed several new members over the last three months and are always pleased to see more new faces either as visitors or members. If you wish to become a member, please contact the Secretary (tel. 242452), or come to one of our meetings to see how you like it before making a commitment (£2 for visitors). Alternatively give us a ring and ask for a copy of our programme for the coming year and we will be pleased to send one to you.

**Anne and David Couling**

## VILLAGE NEWS

Readers can contact any member of the Committee with any news you wish to share. News could include births, marriages and deaths; educational and sporting successes; special birthdays; and news of villagers old and new.

We would welcome you to write your own copy and photos, but if you would prefer just ring up a member of the Committee with the news and we shall try and write it down for you, although it should be noted that the editor has the right to amend copy as space permits.

The names and telephone numbers of Committee Members are below

Chair	Michael Upstone	242715	Treasurer	David Couling	242452
Secretary	Anne Couling	242452	Editor	Carole Heubeck	244790
Advertising	Julian Heubeck	244790			

Parish Council representative Ken Waterfall 242838

11 Church representative Revd Dr Peter Hooper 0116 2394606

# Paint Wizard

Proprietor Paul Beaver, Grey Crescent, Newtown Linford

**Working for You—All types of smart repairs including:**

**Panel Resprays from £130**

**Bumper Corner Repairs from £55**

**Colour Restoration From £55**

**Alloy Wheel Refurbishment from £45**

Polished \* Painted \* Colour coded \* Chrome

**New wheels & tyres supplied**

**At competitive prices**

**Free Collection & Delivery Service Available**

**All prices are plus VAT charged at the prevailing rate**

**0116 253 7371 or 07850 456696**

**Unit 10, Raithby Lawrence Yard, Slater Street, Leicester, LE3 5AS**

241 Main Street  
Stanton Under  
Bardon  
Nr Markfield

**P.W.YEOMANS**



**PAINTERS AND DECORATORS**

Established Since 1973

**Tel: 01530 249336    Mobile 07885 442899**

A Father and Son team working together to give you the best professional and quality service that you would expect, covering all aspects of the decorating trade.

Call on the above number where we can arrange a time that is convenient to you to discuss your decorating requirements, offer advice if needed and give you an estimate.





I wish to thank all who were able to join myself and our family at the recently held Thanksgiving service in All Saints Church to celebrate the life of Roger. The invaluable help of the Reverend Peter Hooper enabled us to assemble the service along guidelines suggested by Roger.

The support of friends has been and is much appreciated. It is a great source of comfort to us all.

**Margaret List**



**Newtown Linford Toddler Group**

**Thursday's 10.15 to 11.45**

**In the infant class of**

**Newtown Linford Primary School**

Babies to pre-schoolers welcome.

Toys and games, craft, outside play, snacks, stories and singing.



A friendly group for parents/carers to have a chat and a cup of tea.  
For more information please phone Philpa on

**01530 249792.**

### **Mature Movers Fitness Class**

**Mondays 1.30—2.30 in the Village Hall**

I run a Mature Movers fitness class on Mondays from 1.30pm – 2.30pm in the Village Hall. The class is for anyone over 50 who would like to improve their general fitness and help to prevent falls. The classes are fun and all abilities are catered for, from beginners, to long term class members. There is a charge of £3 per week

**Mo Watson**

### **LARGE PRINT COPIES**

If you know anyone or you yourself would like to receive a large print copy of the Village Magazine please contact Anne and David Couling on telephone 242452

**Many thanks to Newtown Linford School  
for the use of their facilities to produce the large print  
magazine. It is much appreciated**

## Newtown Linford Sunday School Specials



We meet on the first Sunday of every month, the next session will be on Sunday 7th November between 11 & 12noon. Why not come and join us.

We provide a relaxed, fun environment in which children can learn more about Christian values and lessons through stories, songs and creative activities.

Suitable for children of all ages.

Contact Katherine/Carole on 244790

**Faster internet!** BT are offering the option to vote for which area gets faster broadband—it can't Hurt and may even help— vote to get it for the MARKFIELD Exchange on this website [www.racetoinfinity.bt.com/](http://www.racetoinfinity.bt.com/)

### The Sunday School Rooms

are available to hire and are ideal for birthday parties.

They come complete with kitchen and toilet facilities.

From £5 per hour

To book the Sunday School Room

Call Casey Pearson on 249259

## Roy Green Estate and Letting Agents

*For complete independent professional advice in all property matters  
42 years Local Professional Experience*

### Sales

- *Competitive commission rates*
- *Independent Agent based in the heart of Charnwood*
- *Accompanied viewings*
- *Leicester Mercury Advertising*
- *Full listing on rightmove.co.uk*
- *A team of six with excellent local knowledge*
- *Personal approach, not corporate*
- *Energy Performance Certificate free*

### Letting

- *Full Management and Let Only Service*
- *Management Fees from 8%*
- *Rent Guarantee Insurance subject to status*
- *Tenant Reference and Credit Checks*
- *Professional Inventories and Regular Inspections*
- *Prompt Rent Collection and Landlord Payment*

### **Other services include:**

Land Sales and Advice, Valuations and Reports, Agricultural and Commercial and Management, Service Charge Management, Acquisitions and Development Management & Consultancy

First Floor, 15 The Nook, Anstey  
Leicestershire LE7 7AZ

Tel: 0116 235 3009

Fax: 0116 236 7485

[www.roygreen.co.uk](http://www.roygreen.co.uk)



## RURAL COMMUNITY COUNCIL VILLAGE ACHIEVEMENT AWARDS The Scarecrow Festival

We are delighted to let you know that Newtown Linford has won a Silver Award in the Community Category of the Rural Community Council Village Achievement Awards 2010 for the Scarecrow Festival. This was presented in September by Jennifer, Lady Gretton at the RCC AGM. The Certificate will be displayed in the Village Hall.

**Iris, Jan & Sue**  
**The Scarecrow Committee**

### NEWTOWN LINFORD CHORAL SOCIETY

“The Armed Man”  
A Mass for Peace



Tickets are now available for the Choral Society's Winter Concert, which will be held in Ratby Church on Friday 28 January **and** Saturday 29 January 2011.

At the concert the Choral Society will be performing 'The Armed Man'. This is a stirring contemporary piece written by composer Karl Jenkins, who has an unusual background of classical music, jazz, advertising music and as a member of the rock group Soft Machine. It is subtitled 'A Mass for Peace' and was commissioned for the Millennium celebrations. Since then it has been performed all over the world to immense acclaim from audiences.

The Choral Society is looking forward to the concert, where it will be accompanied by a full orchestra, and professional soprano soloist Sarah Stephens.

Tickets are priced at £9, and are available from Peter Sayer 01530 243822, Newtown Linford Village Stores and any member of the Choir.

**Iris Sayer**

# Anstey Cabs

**Private Hire**  
**Local**  
**Long Distance**  
**Airport Runs**  
**6 + 8 Seat available**  
**OAP Tokens Accepted**

**0116 236 6789**

**0116 267 1415**

**PRIVATE AND  
COMMERCIAL**

**INTERIOR / EXTERIOR**

**A.B. SHERRIFF**

**Established 1988**

**PAINTER &  
DECORATOR**

**42 BRADGATE DRIVE  
WIGSTON, LEICESTER**

**Telephone 0116 288 1048**

**Mobile: 07719 366 569**

16

## *Glebe Von Wood*

*Encouraging Happy, Healthy Pets*

### **3 Walks Daily**

Staff That Love Your Pets

### **Fussing Sessions**

Exceptionally Clean Kennels

### **End Of Stay Free Laundry Wash**

Crèche From 7am - 6pm

### **Dirty Dog Wash Or Full Grooming Service**

Obedience, Fun Agility & Socialisation Training

### **Small Animal Boarding**

Centrally Heated Kennels

### **Opening Hours**

*Mon - Sun 8 - 8:45am & 5 - 5:45pm*

**Tel:** 01530 813145 **Mob:** 07970 104756

Glebe Farm Green Lane Whitwick Leicestershire LE67 5EE

**e-mail:** [glebevonwood@glebeservices.com](mailto:glebevonwood@glebeservices.com) [www.glebevonwood.co.uk](http://www.glebevonwood.co.uk)



## **Foot Problems ?**

**Corns, Calluses, Veruccae, Hard Skin, Nail Problems, Athlete's foot, Sore and Cracked Heels.**

**Have them treated  
Professionally in the comfort of  
your own home**

Ring **Alistair Watt** MCFHP.MAFHP.

**Foot Health Specialist**

**Tel 01530 243009  
or 07802 777221**



**Evenings and weekends  
available**

**Service with a smile -**



Newtown Linford Village Hall Committee

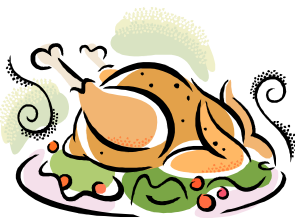
**SENIORS CHRISTMAS LUNCH** (over 60)

**Thursday 25<sup>th</sup> November**

Doors open at 12.00

Come and join us for what is always a popular  
sell out event!

Start Christmas here with



Our normal excellent  
Christmas lunch

Including

Mince pies and Coffee



Carol Singing and Entertainment by  
Newtown Linford Primary School

**Ticket price £8**

Call Carol Ann – 243433  
or Gill – 242375 for tickets

## Newtown Linford Ramblers

"For our October walk, eleven of us enjoyed lovely autumn colours locally. We walked to The Green at Anstey using less frequented paths of Bradgate Park and then returned via Sheet Hedges wood to Bradgate Road. We were grateful to find that many stiles have now been replaced by easier access gates."

November 13th	Bill Mainwaring	0116 2314965
December 11th	Ed Killick	01530 249589

The December walk has been changed to a morning walk, followed by lunch at the Blue Bell, Rothley. Meet in the pub car-park 11:00.

The Leicestershire Round will continue in 2011.

Unless otherwise notified, walks are the second Sat. in the month and depart from opposite the Village Hall at 2.00pm. Most walks are between 4-5 miles. New members are always welcome. All you need is a pair of walking shoes or boots, and able to walk 4-5 miles..

*Dogs are welcome only under the supervision of the owner, and to be on the lead where there is livestock or nesting birds. Please check with the leader that dogs are allowed across any access land.*

Any queries, please ring Glenis Meredith, Tel. 242897.

Disclaimer. Members are reminded that participation in walks is at their own risk, and that the leader(s) accepts no liability for any loss or injury, however caused



Photo: by Alan Iliffe





**Enjoy Our Fabulous New  
Lunch Menu in the  
Exquisite Settings of our  
Gardens or Restaurant**

**For Only £11.50 You Can  
Enjoy A Two Course Meal or  
Three Courses for £15.50**



**For Reservations or For  
More Information Please  
Call 01530243558**

**The Grey Lady Sharpley Hill Newtown  
Linford Leicester LE6 0AH  
[www.the-grey-lady.co.uk](http://www.the-grey-lady.co.uk)**



**Join Martin at the VILLAGE  
Restaurant for a Home  
Cooked Carvery Lunch  
Available Tues - Sat  
12 noon – 2pm  
Main Courses from just  
£7.95  
Traditional Three Course  
Sunday Lunch £17.95  
12 noon – 3pm**

**Dinner Thurs – Fri Evenings**

**Two Courses £12.00**

**Three Courses £16.00**

**Sat Evenings**

**Two Courses £16, Three  
Courses £20**

**Outstanding Value!**

**Limited A La Carte also available.  
Whether you choose lunch or  
dinner a warm welcome awaits**

**The Village Restaurant**

**544, Bradgate Road, Newtown**

**Linford, LE6 0HB**

**Tel 01530 245801**

**[www.thevillagerestaurantnewtownlinford.co.uk](http://www.thevillagerestaurantnewtownlinford.co.uk)**

**email:[info@thevillagerestaurantnewtownlinford.co.uk](mailto:info@thevillagerestaurantnewtownlinford.co.uk)**

# THE GREAT LOUGHBOROUGH SANTA FUN RUN 2010

## RUN FOR FUN

Those of you in the village who have taken part in previous Santa Fun Runs in Loughborough know what fun it is, but now is the time to put the date in your diary, Sunday 5<sup>th</sup> December, for this year. For those of you who think this not for me just think again.

The emphasis is on FUN. It is a fun run, suitable for all abilities, and every entrant will receive a free Santa suit, children's suits are also available. Typically there are some good runners, but the majority are just joggers, walkers, and strollers accompanied by children, push chairs, babies in prams, the family dog, invalid chairs, OAP's, Mums and Dads, Grandparents, teenagers and toddlers. I think that covers most people.

The Great Loughborough Santa Fun Run organised by the Rotary Club of Loughborough, together with support from Loughborough University, and Charnwood Borough Council, is over a 6km (4 miles) circular route from the University international running track and through the centre of Loughborough.



So how can you enter and join in the fun run? You can enter on-line through [www.santa-fun-run.co.uk](http://www.santa-fun-run.co.uk), and from 4<sup>th</sup> October, you can request an entry form today from me, Dick Howard on 01530 245373 , or pick up an entry form at the Tourist Information Office at the Town Hall, or collect a form from the Loughborough Building Society in High Street. You can enter as an individual, or a team of 8 and raise funds for your Charity or Club.. Last year 45 teams in suitable festive attire battled for the Bate-man's Brewery Cup.

To date the previous five Santa Fun Runs have raised nearly £180,000 for local charities so please support us again this year.

This is the largest Santa Fun Run in the East Midlands so don't miss your opportunity to join in and RUN FOR FUN.

**DICK HOWARD. 94A Main Street, Newtown Linford  
Rotary Club of Loughborough**



## OPERATION CHRISTMAS CHILD

This is an appeal for the residents of Newtown Linford to join in the campaign run by the Christian organisation Samaritan's Purse, which every year sends out boxes full of presents to children in Belarus, Romania, Liberia, Serbia and the Ukraine. These Christmas wrapped shoeboxes should be filled with toys, educational supplies, hats and scarves. Please do not seal the boxes up.

For more information you can visit the website  
[www.samaritanspurse.uk](http://www.samaritanspurse.uk)

If you can bring your filled box (or we can pick up) to Fiona & Katherine Heubeck at 5 Grey Crescent 01530 244790 by November 12th we will arrange for them to be forwarded on. Thank you **Fiona Heubeck**

### **Bradgate Flower Club**

An open floral demonstration entitled "Christmas Magic" will be held on Wednesday 3rd November at Groby Community College.

The guest is the national demonstrator David Fawcett-Ropner from Lancashire, who will provide plenty of ideas for seasonal displays.

Bradgate Flower Club welcomes new members and visitors. Doors open at 6.30 pm for a 7.30 start. Tickets are priced £5 for Club members and £8 for guests. These can be obtained in advance by calling 01530 415378 or 0116 2363191.

21 **Geraldine Abbott**



## Bradgate Team Sunday Services November 2010

Date	Groby	Ratby	Newtown Linford
7 <sup>th</sup> Nov	8.00am Holy Communion		
	9.30am Family Service	10.00am Worship for All	11.00am Family Communion
	6.30pm Holy Communion	6.00pm Holy Communion	
14 <sup>th</sup> Nov		8.00am Holy Communion	8.00am Holy Communion
	10.50am CTG Remembrance Service	10.45am CTR Remembrance Service	10.45am Remembrance Service
	6.30pm Evening Prayer		
21 <sup>st</sup> Nov	8.00am Holy Communion		
	9.30am Third Sunday Morning Worship	10.00am Holy Communion	11.00am Holy Communion
	6.30pm 3SE		
28 <sup>th</sup> Nov			8.00am Holy Communion
	9.30am Holy Communion	10.00am Holy Communion	11.00am Morning Worship
	6.30pm Team Service: Advent Lessons & Carols		

### Midweek Communion Services

Groby

Wednesdays at 9.30am

Newtown Linford

4<sup>th</sup> Nov at 10am

Ratby

Thurs 11<sup>th</sup> and 25<sup>th</sup> Nov at 9.30am



## Church Services and Events for November 2010

### **Sunday 7<sup>th</sup> November– 3<sup>rd</sup> before Advent**

11.00am Holy Communion Preb. John Woolmer

### **Sunday 14<sup>th</sup> November – Remembrance Sunday**

8.00am Holy Communion Canon Derek Buxton

10.50am Remembrance Service David Collins

### **Sunday 21<sup>st</sup> November – Christ the King**

11.00am Holy Communion Revd Peter Hooper

### **Sunday 28<sup>th</sup> November – Advent Sunday**

8.00am Holy Communion Revd Louise Corke

11.00am Holy Communion Revd Helen Hayes and David Collins

**Thursday Communion** 4<sup>th</sup> November at 10.00am

**Focus Prayer Times** Tuesdays at 10.00am

### **Contact Details**

Team Rector Revd Dr Peter Hooper 0116 239 4606

The Rectory, 23 Ferndale Drive, Ratby LE6 0LH.

Email: peter@hoopers.orangehome.co.uk

Team Vicar Revd Louise Corke 0116 231 3090

58 Pymm Ley Lane, Groby

Email: words.th@talktalk.net

Team Website: [www.bradgateteam.org.uk](http://www.bradgateteam.org.uk)

### **Regular Events**

Bell ringer's Practice: Monday 8pm

# KEITH SMITH (ANSTEY) LTD

6 STADON ROAD ANSTEY LE7 7AY - SALES RENTAL & SERVICE  
 TEL: 0116 2362395 - sales@keithsmithltd.co.uk



## FAST FREE LOCAL DELIVERY



### INDESIT IWB6123UK

- Washing Machine
- ❑ 1200rpm Spin Speed
  - ❑ 6Kg Load Capacity
  - ❑ 16 Progs
  - ❑ AAB Rated
  - ❑ Time Delay

WAS £299.99 Save £40  
**NOW £259.99**



### HOTPOINT AQ7F29I

- Washing Machine
- ❑ 1200rpm Spin Speed
  - ❑ 7kg Load Capacity
  - ❑ AAB Rated
  - ❑ 30min Quick Wash
  - ❑ AAB Rated

FREE 3 Year Warranty  
**£399.99**



### HOTPOINT WML520P

- Washing Machine
- ❑ 1200rpm Spin Speed
  - ❑ 6Kg Load Capacity
  - ❑ Mini Load
  - ❑ Quick Wash
  - ❑ AAB Rated

WAS £329.99 Save £40  
**NOW £289.99**



### HOOVER OPHS612

- Washing Machine
- ❑ 1200rpm Spin Speed
  - ❑ 6Kg Load Capacity
  - ❑ 29min Quick Wash
  - ❑ 14 Progs
  - ❑ A+AB Rated

Free Installation\*  
**£279.99**



### ZANUSSI ZWG1120M

- Washing Machine
- ❑ 1200rpm Spin Speed
  - ❑ 6kg Load Capacity
  - ❑ AAB Rated
  - ❑ Time Delay
  - ❑ Quick Wash

WAS £299.99 Save £40  
**NOW £259.99**



### BEKO CDA539FW

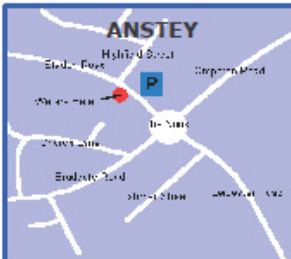
- Fridge Freezer
- ❑ 134/63 Litres Capacity
  - ❑ Frost Free
  - ❑ Two Glass Shelves
  - ❑ A Energy Rated

Fast Free Local Delivery  
**£289.99**

All products are in stock and available for immediate Delivery  
 Internet Prices With Personal Service  
 Ask about our Price Match Promise  
 Built-in Display  
 Lots of other offers in-store now!

Free Installation (worth £29.99)\*  
 Free Removal of Old Machine (worth £14.00)\*\*  
 Free Removal of Packaging

\*To Existing Fittings. \*\*Excludes Refrigeration



## SCHOOL FETE!

By Newtown Linford Primary School Reporters

On Saturday 25th September 2010 there was a School Fete in the village (because it was scarecrow days the school fete was from 10.30 until 4pm). We all built scarecrows, well most of us. Even the School built three. Jupiter built Henry the eighth, Mercury built Anne Boleyn and Pluto built Mary from the dairy (they met her at Donnington Le Heath). The School Fete was great. They had lots of stalls, we had splat the rat, hook a bug that was great. We also had a tombola. Mrs Tandy one of the teachers came in to do some mendys (patterns on your hand). There was tea and cakes yum, yum.

At the end of the day all the children from the school threw a sponge at Mrs Jenkins our head teacher.

So why don't you come next year?

**By Abbie Bradley**

On Saturday 25th September, Newtown Linford Primary School decided to have a School Fete. It started at ten thirty and finished at 4pm. There were a lot of stalls for children to work at. Me and my PE teacher Paul Barley worked on the penalty shootout. Basically I had to be in goal for the children and Paul was in goal for the 14yrs and over. Altogether we raised about £20 and it was very fun.

There was some other stalls as well, one was grab a bug and it was very popular indeed. By the time I finished my job all of them were gone. So instead I went on lucky dip and lucky lolly. I had a lot of sweets that afternoon. Less people came than I thought probably because it was scarecrow weekend and there were a lot of good ones. Overall I really enjoyed it and we raised about £20.

**By Jake Johnson.**

There was a balloon race, splat the rat, name the dog and a cake stall and the head teacher won.

The scarecrow festival was on the same day. The fete started at 1030 and finished at 4pm. Paul was running the penalty shoot out.

If it is on next year I would like a ice cream stall and a football tournament. This year one was really good. I liked the hook and bag and the tombola.

25

**By Jack Hammond**



## SCARECROW FESTIVAL WEEKEND



The Scarecrows were really wonderful again this year, we had 53 entries in the Competition and at least half a dozen more joined in for just the fun of it and were a lovely surprise as we walked round. They were very much enjoyed by everyone in the Village and the huge number of visitors over the weekend. The weather was very kind to us and we had a glorious day on Saturday and cold but dry weather on Sunday. The Judges, Parish Councillors Ken Waterfall, Lydia Knott, Janet Neaverson and Pam McMorran, had an extremely difficult task. They took a photograph of every scarecrow to help in their deliberations and we are very grateful to them.

The School Fete was a great success on Saturday and there were other events taking place in the Church where there was an excellent and very popular book stall. The opportunity to ring a Church Bell seems to be unique to our Village and 260 people queued to have a go over the weekend. The Church looked particularly beautiful with the Harvest Festival flowers and decorations. On both days our talented Art Group held an exhibition of their work in the Sunday School Rooms

On Sunday, once again the Church was open, and Scarecrow Teas were served in the Village Hall by the Gardening Club. There were also displays including our historic Archive, an "Old and New" photographic display of some of the village cottages and views, book stall, photographs, tombola, face painting, cards, jewellery and other attractions. Did you see the Desford Pedallers on their vintage bicycles?

Retro Barbershop Quartet sang around the village on Sunday afternoon. Councillor David Snartt presented the Certificates and prizes.

A very big thank you to our Judges, Councillor David Snartt, Brown Owl & The Brownies, Sharon & Tony at the Village Store, the PTA, the Staff at the School, the bell ringers, Brian Anderson for lending me some of his photographs and postcards, everyone who helped on the day, Eleanor for sacrificing her hockey match and Lawrence selling programmes on a chilly afternoon, and for the books and cakes and especially every Scarecrow owner. The total amount raised at all the events in the village over the weekend will exceed £3000.

The Scarecrow Committee collected £479 and, apart from an amount set aside to pay for next years prizes, all of this will be donated to village organisations.













# P WHITWORTH

## Building Contractor

Established for 25 years



227 Markfield Lane,  
Newtown Linford,  
Leicestershire LE67 9PQ

High quality craftsmanship assured.  
From Planning to completion.  
Specialising in traditional materials.  
All work guaranteed, references available.  
For a free, no obligation consultation,  
telephone Peter Whitworth on:

**07973 841 655**



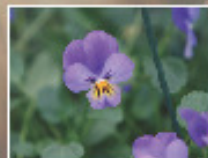
Brookside  
Nurseries

A Garden Centre  
For Gardeners

Spring-Flowering Bulbs  
now fully in stock  
Daffodils, Tulips, Hyacinths, Crocus



Winter Pansies  
Autumn Bedding  
Wallflowers



Brand New Range of  
Wild Bird Care



9am-5pm Mon-Sat, 9am-1pm Sun • 129, Cropston Road, Anstey, LE7 7BR

Telephone: 0116 236 4564

[www.brooksidenurseries.co.uk](http://www.brooksidenurseries.co.uk) • [contact@brooksidenurseries.co.uk](mailto:contact@brooksidenurseries.co.uk)

Congratulations to:-

**Under 10:** Mickey Mouse. Grace Long & Charlotte Wright

**Highly Commended:** Tommy Tucker. Lucy Holmes & India Keates  
Gypsy Rose Lee. Daisy Turner & Jade Pilgrim.

Who's for the Charleston? Beth Raynor & Chelsea Gregory

**10-18** Surf you right Bart. Sophie & Tom Halborg

**Highly Commended:** Under the Sea. Chloe Pearson

**Over 18:** Lion King. Mrs M Wardle

**Highly Commended:** Wurzel's Nightmare. The Wheeler Family.

Builders on Strike Angela & Malc Roach.

Tree Surgeon. Sue & Richard Scott.

Crowscare. Joe & Claire Costello.

Baking day in the Farmhouse Kitchen. Mrs Millie Mason

**Group Winner:** Martin & his Market Garden. The Grey Lady

**Highly Commended:** Sing a song of Sixpence. Mrs Gwen Wakefield

Who put that Tree there? The Rigg Family.

Bailed Out. Caroline & Claire Pre School Playgroup.

**The People's Choice.** Wurzel's Nightmare The Wheeler Family.

**Runner up.** Catch of the Day. Suzie Poulton at Shore

Many of the Scarecrows will appear on the village website over the next few months so keep looking for your favourite on the special Scarecrow pages at [www.Leicestershirevillages.com](http://www.Leicestershirevillages.com).

They were all fantastic.

We are already looking forward to 24<sup>th</sup>/25<sup>th</sup> September 2011

## Newtown Linford Scarecrow Festival

### The Book Stall

We would like to say a very big thank you to everyone who donated books to the stall. We received a great variety of books and this made the stall a huge success and over the weekend raised £257. All of this will be donated to village organisations.

Iris & Jan



# PARKER TILING

Local Tiler with 10 years experience  
Bathrooms/Kitchens Floors and Walls.

All types of tiles installed including  
Natural Stone, Porcelain and Ceramics.

Free Quotations and Advice.  
Restorations and Repair Work,  
No job too big or small.



For more details contact  
Ronnie Parker,  
Markfield Lane, Newtown Linford  
Phone: 07879455613  
Email: parkertiling@hotmail.com

PARKER TILING

# Peter Henton

## Domestic Appliance Repairs

Ex Zanussi Senior Engineer

Tel 0116 2896529

Mobile 07711  
265414

## Contacting the Police

Dial 999 only if a crime is being committed or when life is in danger.  
Police but not dire emergency

**0116 222 2222**

To call any police officer or PCSO

Ring **0116 248 5675**

followed by their collar number.

Our neighbourhood beat officer is PC Steve Rhodes. To contact him, telephone 0116 248 5675 follow the instructions and when prompted enter the number 0544. This is for non emergency occasions.

If you have information about a crime and wish to remain anonymous, you can ring Leicestershire **CRIMESTOPPERS** on

31 **0800 555 111.**

## KATHRYN FARNHAM

Practitioner of Reflexology  
Sports Injury and  
Massage Therapies  
Also available  
Hopi Ear Candling  
And Holistic Facial



Please call Kathryn on  
01530 242 771 or

07878 933 752,

alternatively email

[gente.reflex@gmail.com](mailto:gente.reflex@gmail.com)

[www.theholisticway.co.uk](http://www.theholisticway.co.uk)

Gift Vouchers Available

Newtown Linford Based

Accredited with the British  
Register of Complementary

Practitioners

## From the Records

### FILLING IN THE GAPS

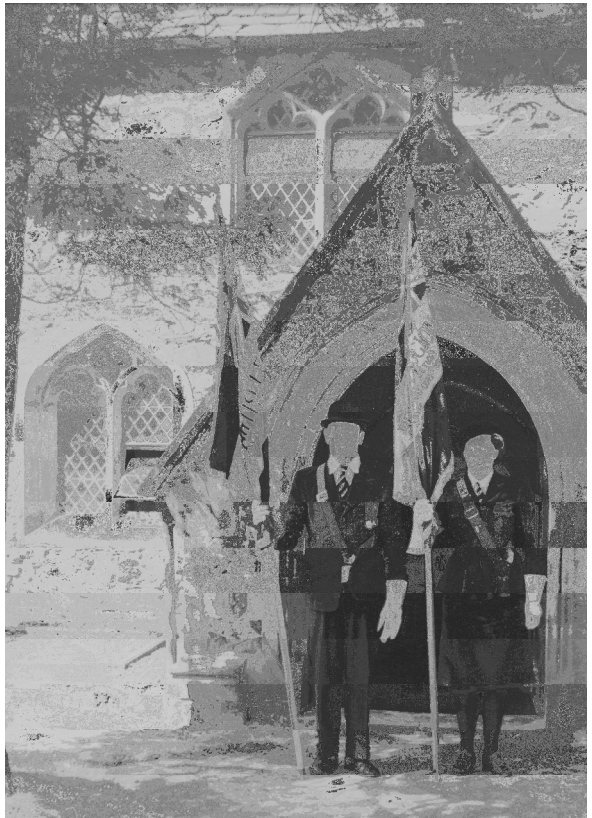
In November our thoughts turn to those who served their Country in conflicts. In June I told you about our participation in the Leicestershire and Rutland War Memorials Project. Giving you the information I had, I asked for help and Andrew Langton came forward with the information he had obtained surfing the net. Many thanks to Andrew for his help and enthusiasm. We are gradually piecing together the facts. I also have a friend who is a volunteer at the Family History Unit and he is beginning to obtain information we need. Hours of work for all those involved. Many thanks.

Andrew's aim is to put together a booklet about the men mentioned on the Memorial Plaque in the Church. It is to be placed by the Memorial with a copy to the Leicestershire and Rutland Memorial Project. We also followed up the names on the board in the British Legion Club. Gwen has itemised where each of them lived in the village. Can any of the descendants provide us with more information about these men?

Our WI records only go back to 1951 but they do contain some photographs collected from earlier dates which include the British Legion Annual Parade. This shows the flags which hang by the memorial - the Ladies Branch and the Men's Branch of the Newtown Linford Group (if you go to look at the flags please do not touch them, they are very fragile).

This is how records are built up which will give future residents of Newtown Linford an insight into the lives of the people who lived here in the past.

**Janet Neaverson**



# THE POST OFFICE TEA ROOMS NEWTOWN LINFORD

Downstairs Seating Now available  
Outside Seating Under Cover Now Extended



## Opening Times

Mon-Fri	10am -	4.30pm
Sat & Sun	9.30am-	4.30pm

# 01530 242709

550 Bradgate Road, Newtown Linford

## PEST CONTROL

DOMESTIC • COMMERCIAL • INDUSTRIAL



**Guaranteed Service**  
**No Add On Charges**

Wasps • Bees • Fleas • Ants  
Rodents • Bird Control • Fly Killers  
Fly Screens • Products / Services

FOR A FAST, RELIABLE RESPONSE

**CALL FREE ON**

# 0800 031 9388

**Target**

creating a pest-free environment

[www.targetpestcontrol.co.uk](http://www.targetpestcontrol.co.uk) | [info@targetpestcontrol.co.uk](mailto:info@targetpestcontrol.co.uk)



## Remembrance

At this time of year we remember all service personnel and civilians who have served our Country over the years. Some sadly lost their lives but many returned to live long lives with many memories good and bad. Here we share some of the memories of Mona Cross.

Mona Cross lived on Markfield Lane for many years before moving to her bungalow at Markfield Court about 18 years ago. She joined the Colonial Nursing Service now known as the Queen Elizabeth Nursing Service and was posted to Palestine to train nurses at the time that Palestine was not allowing women in.



After the First World War, Palestine was a British Mandate for 30 years until 5th May 1948 when Israel was created. The last Governor General *Sir Alan Gordon Cunningham* GCMG, KCB, DSO, MC left by plane to subsequently board the HMS Euryalus a dido-class cruiser to return to England. A double page spread records this in the Illustrated London News on the 29th May 1948. Mona has the original copy. For anyone interested in old records The University of Oxford Bodleian Libraries now has the Illustrated London News archives from 1842 to 2003 available on line.

Mona Travelled on a Troop ship with Warrants provided by the Foreign Office. On the ship other civilians did not believe she was going to Jerusalem, as women were not allowed in, and they believed her to be a terrorist. They began to shun her but the ship's doctor was friendly. He talked to her and said he may need her midwifery skills as a wife on the ship may give birth. The next step of the journey was by special troop train which only ran at night. Two Palestinian officers escorted her on the first stage but one was ordered to leave the train at Gaza. Mona along with all other civilians had to vacate the train at Lydda. Eventually Army Transport was located. It was bitterly cold with dawn breaking in the Sinai Desert and you dare not leave your luggage or it would disappear.



Tel: 0116 234 0700

A showroom  
full of ideas  
for living and giving



Plus  
Luxury Coffee Lounge  
serving homemade soup, cakes  
and lunches prepared daily

BROUGHTONS INTERIORS  
75 CROPSTON ROAD  
ANSTEY, LEICESTERSHIRE

[www.broughtonsinteriors.co.uk](http://www.broughtonsinteriors.co.uk)



Hassle Free Shopping with Customer Car Park! OPEN Mon-Sat 9am-5pm Sunday 10am-4pm

# Broughtons

*an Aladdin's Cave of Period Lighting  
and Restoration Hardware*



*Doors & Floors  
Fireplaces, Radiators & Stoves  
Lighting, Switches & Sockets  
Handles, Knobs & Knockers*

THE OLD CINEMA, CROPSTON ROAD, ANSTEY, 0116 234 1888 [www.broughtons.com](http://www.broughtons.com)

Mona travel with them in their vehicle on the understanding that she sit close by the Brigadier and not to talk with anyone else. Mona got the impression that they all thought she was a terrorist. The unit had two young armed guards. Mona recalls the drive down to Jerusalem being very beautiful.

On arrival at the hospital which was in its own compound Mona was greeted by a lady all in white dashing across to meet her throwing her arms around saying she had only just heard she was coming. This was the first meeting with the Matron. Mona was given a good breakfast followed by a sedative and a good sleep. When she woke she was told that she was expected at Government House for a cocktail party as the Governor liked to meet everyone. Mona thought she had no suitable clothes, not a lot of energy and when she saw Matron in her silver lame and fox fur she knew she could not go. The Governor said that he understood. She did subsequently meet the Governor several times as she nursed his Chauffeur.

Mona was in Palestine from September 1947 until April 1948. During that time she attended Carols in Bethlehem and still has the commemorative sheet. She also has all the old passes that were necessary as movement was restricted and a curfew in force. All of the Palestine Police that Mona met were English. Conditions were difficult, with food shortages and in the end it was not possible to carry out the training programme and only nursing itself was carried out.

Mona received her Palestine War Medal for 1945 to 1948 soon after returning. It is an unusual medal in that the recipient's name is engraved round the edge.

The photograph of Mona in her uniform was taken in Hong Kong where she was subsequently posted to train nurses. It was compulsory to learn Cantonese and Mona passed her first examination. Mona has since been sent her Hong Kong Medal for anyone who served for more than six months in the Colony of Hong Kong between 1841 to 1997. Mona served in Hong Kong between 1948 and 1952.

This photograph shows Mona's two medals.

If you would like to share some of your memories whether you were Land Girls, did unusual jobs or served overseas we would love to come and see you and print your memories.





**Return to Bradgate Park** (continued from last month)



In Spring, ferns unfold again, As herds drift and graze, white and red  
While our child lies in his pram, Face cupped by the hands of the returning sun

Four years pass to another high summer

The boy fishes for minnows that sprout and shiver from the mud's gelid wrap

He clatters over pebbles and into those same shallows where I once splashed

Later we scramble on the rocks

Our hands finding holds amongst traces of frozen sea creatures

Our feet in the cracked cup of a volcano

Sculptured by glacial melt waters

And when we leave in early evening, His grey eyes are a store of green  
a hoard to colour the books of his dreams

Bradgate brings us back like boats to anchor

No matter how time has intervined in the space between

Whether or not our numbers have been swelled  
or decreased by death or by birth

After the loss of a lover, father, brother or wife

Even though he or she may have slipped out at first or last light

Shut or slammed the door

Caught the train or packed the car and left

Even if we are grown faster or slower or louder or more dear

We are drawn back to where the river waits beneath long branches and  
deer cut paths through the mist

Where the worlds oldest rocks absorb the weather

Take hot rays and frost down deep into the earth

Generous and unchanged, Bradgate,

Anglo-Saxon from Broad Road or Gate, enduring, constant its grandeur  
modestly swathed in the fern mantled vale beneath England's belly

This is the place to which we return regardless of blood results and CT  
scans, of roadside bombs, of best laid plans

Of loves gone and loves to come of growing pains and April rains

Last years golden bracken will flare under our footfalls

While new green shoots unfold and Old John will be standing

Just where we left it.



Reg no.  
12310

## Quality Builders



# Bromac Builders

Established for 25 years,  
with an excellent reputation for  
quality and reliability

**References available.**

**Herbie McDonnell**

**63 Main Street, Newtown Linford, Leics., LE6 0AE**

**Telephone / Fax: 01530 245318**

**Mobile: 07774 852529**

## Over 70 *or* On benefits?

### You may be eligible for **FREE LOFT INSULATION**

If not, you may still be entitled to £150.00 off your loft insulation

To find out more, contact:

**Herbie McDonnell**

Bromac Builders Ltd

63 Main Street

Newtown Linford

Leics LE6 0AE

**Tel. 01530 245318**

**Mobile: 07774 852529**



**Bromac Builders Ltd**  
Established for 25 years



**Newtown Linford Neighbourhood Watch**  
**A member of the Parish Council**



I have made enquiries as to why I have not been receiving NHW emails from the NHW office which is in Loughborough Police Station and apparently the new Chief Constable has censored information that can be passed out to such an extent it has been rendered useless.

I do still receive information from our own Beat Police and I have not noticed it being any different but then perhaps they have not been told yet. Perhaps I had better keep quiet on that point. Meanwhile I will pursue the matter further with the powers that be in the Police. Presumably they think passing out information jeopardizes their enquiries. Something the Leicestershire Constabulary has told me is that they now hold a monthly online web chat with the Road Policing Unit. You can speak live to one of their officers. The site address is [www.leics.police.uk/rpuwebchat](http://www.leics.police.uk/rpuwebchat) the last transmission was the 6<sup>th</sup> October.

We had four burglaries on successive days between 2<sup>nd</sup> to 5<sup>th</sup> October on Main Street, Grey Crescent and Bradgate Road. Arrests were made after the last burglary but I do not know whether all four crimes were committed by them. News on the street tells me that they were heroin addicts from Anstey who were arrested but this has not been confirmed. I also believe that the car stolen from Main Street at a Burglary in August has been recovered.

As I transmit this copy to print, I have received notification of a new way of information distribution which may explain what I have said in the first paragraph. The details are lengthy and I could not take it all in on one quick read but it seems that a new scheme will be jointly run by the Police and National Neighbourhood Watch. Both organizations will enter information which will be visible and transmitted to registered NHW groups simultaneously. I have registered Newtown Linford for when it becomes up and running. Watch this space.

**Pam McMorrان**  
**NHW Co-ordinator**



# THE LINFORD

*"Your village local!"*

**Quiz Night every Wednesday  
Song Club**

*see posters for dates and details*

**Function Room Available**

Main Street Newtown Linford  
Tel: 01530 244012 after 6pm

## Progressive Computing

**Complete Computer Service**  
for Home and Business

We come to YOU at a time to suit  
- Additional Evenings or Sunday service available.\*



\* Closed Friday Evening  
and Saturday but  
open Sunday to Friday

Established  
1998

01530 490 052 or 07817 749 134

## E.W. Goddard & Sons

(Established 1970)

**QUALIFIED PLUMBERS  
AND**

**HEATING ENGINEERS**

**Bathroom and Tiling  
Specialists**

**All Building Work  
and Renovation**

\*\*\*\*\*

305 Markfield Lane  
Markfield LE67 9PR

Telephone

01530 245316 or 0116 2311672  
07961 319907 or 07961 319908

## **NEWTOWN LINFORD PARISH COUNCIL**

**Street Lighting:** The Manager of the County Council Street Lighting Reduction Project was supposed to attend our meeting in September. He did not. We found out later (weeks later!) that he could not make it and had passed the task on to a colleague, but due to a misunderstanding, he did not turn up either. It was annoying but not hugely important because the scheme which will cut out night time street lighting between midnight and 5 am will not come into effect for some time.

**Planning Issues:** If you want to make changes to your house, it is worthwhile to check with the Planning Department of Charnwood Borough Council first. Sometimes even small changes, for instance a change of windows or the addition of a porch, can require planning permission, especially if your property is listed. Although in theory you can do what you like, if it is found afterwards that whatever you have done needs planning permission, you must be prepared to undo any sort of development, if your retrospective planning application is refused. So, to save you and others a lot of aggro, seek Charnwood's advice, which is free.

**Highways:** Following a number of near misses at the bend on Groby Lane, just before you get to the Cemetery, the Parish Council has asked for a warning sign indicating that there are tractors crossing the road. Our Borough and County Councillor, Mr. David Snartt fully supports the request. Due to a Government directive to reduce street furniture, the initial response was negative. However, we shall continue to press for the sign on safety grounds. (There was a crash, with one car ending up on its side, yesterday 16th October 2010 in the very spot we are trying to safeguard).

The Minutes of the Parish Council meetings can be seen on our website [www.newtownlinford.org.uk](http://www.newtownlinford.org.uk), at the Village Store or at my house by prior arrangement.

The next Parish Council meeting is on **Monday 29th November 2010** at 7 pm in the small hall of the Village Hall. Please come, you will be made very welcome.

**Lydia Knott**  
**Clerk to the Council**

**T: 01530 242522; e: [lydia.knott@btinternet.com](mailto:lydia.knott@btinternet.com)**



## Booking of Village Facilities

To book the Village Hall (Residents only)  
call Pat Wood on 242251.

To book the Sunday School Room  
call Casey Pearson on 249259

**WORRY - DEPRESSION - ANXIETY - ANGER - OCD - PTSD**

## COGNITIVE BEHAVIOURAL THERAPY

A COST EFFECTIVE THERAPY  
BASED ON EVIDENCE OF WHAT ACTUALLY WORKS.

cbttherapist.co.uk  
Tel : 0845 4178044

**Dr Gerry Kearns B.Sc.(hons), Pg.Cert, Pg.Dip, M.A, M.Phil, Ph.D**

**PANIC - PHOBIA - CFS - SUBSTANCE MISUSE - PAIN - IBS**

## Magazine Contributions

Can we please have your contributions for the **December/January 2010/11** issue by **15th November 2010** please. **Send to the Editor, Carole Heubeck, 5 Grey Crescent, Newtown Linford (01530 244790). E-mail heubeck111@btinternet.com and heubecks@googlemail.com**

**Please could you send any emails to the above email address. If you do not receive an acknowledgement of your email—please contact Carole, the Editor direct on the above number to check we have received it.**

The opinions expressed by the contributors are not necessarily those of the Editors and they reserve the right to amend, shorten or not print any article or advertisement submitted for publication. Whilst every effort has been made to ensure the accuracy of the information printed in this magazine, and advertisements are accepted in good faith, no liability can be accepted for loss, damage or claim of any kind incurred by the reader