

ISSUE NUMBER 98

CONTENTS

October 2012

Church News	3/4, 22/23
Village Diary	5
Charnwood Art Exhibition	5
Scarecrow Festival	6/7
Gardening Club	8
Youth Club/PTA Quiz	11
Brownies	13/14
Ramblers	17/18
Jubilee Celebrations	19
From the Records	25
Bradgate Lions	27
Neighbourhood Watch	29
Welcome Club	33
Badminton Club	33
Santa Fun Run	35
Parish Council	40



pre-printed adverts



How valued do you feel?

I wonder how valued you feel today. We've all had the experience haven't we, when we feel completely overlooked and taken for granted and let's be honest, it's not very nice

As I write this I am on a 5 week placement up in Nottingham spending time with excluded pupils and the homeless, people who know exactly what feeling worthless is like. It's been incredibly sad to hear people's stories, not just of the desperate lives they lead but also the fact that they do not believe they have any value or worth and certainly do not think that anybody is interested in them.

Now, this would be sad enough if these were the only groups of people that felt like this but we know that there are many more who feel the same. The elderly and infirm, refugees and asylum seekers, those who struggle with mental health or disabilities – many of whom feel they are on the scrapheap of society.

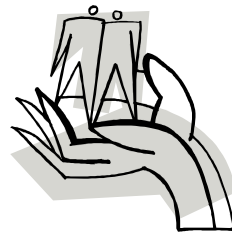
We live in a world that seems to value youth and beauty, wealth and power and it is so easy to believe this lie, but it is just that – a lie. The Paralympics have just reminded us that all people have worth and value and can achieve the most amazing things even if they have had to battle against difficult circumstances. People can achieve amazing things when they feel someone believes in them.

And all of us are valued and believed in. Psalm 139 talks about how each one of us is important to God whoever we are. We are that special to God that God's thoughts about us even outnumber the grains of sand on the seashore (v17-18). If you've ever tried to count the grains of sand just in one handful you'll get some idea of just how much God thinks of us.

So if you are feeling pretty worthless right now, or overlooked in any way, remember that whoever you are and whatever you are facing -

you are loved. God's thoughts towards you are not of condemnation and judgement but are of absolute love and admiration and you are loved and valued more than you know.

Yours in peace and love
Helen Hayes



New Office Hours



From September the Parish office will be open from **9am - 11am every weekday morning**. It is hoped that this will be a lot easier for people to remember and therefore make the office more accessible to everyone.

Administrator: Bekki Williamson (9am- 11am weekdays) 0116 239 3768

LARGE PRINT COPIES

If you know anyone or you yourself would like to receive a large print copy of the Village Magazine please contact Anne and David Couling telephone 242452

Many thanks to Newtown Linford School for the use of their facilities to produce the large print magazine. It is much appreciated

VILLAGE DIARY

October

- 3rd Bradgate Flower Club
- 13th Ramblers
- 19th - 23rd Art Exhibition
- 8th Parish Council Meeting
- 23rd Gardening Club

November

- 2nd Youth Club/PTA Quiz



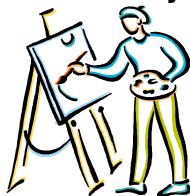
Regular events

- | | |
|----------------------------------|-------------------------------------|
| Monday afternoon | Mature Movers fitness class V. Hall |
| Mondays 8pm at the Church | Bell Ringing |
| 1st Monday of the month | Youth Club |
| 4th Tuesday of the month | Gardening Club |
| 1st Wednesday of the month | Flower Club |
| Thursdays am during school term | Toddlers Group |
| Thursdays eve during school term | Brownies |
| Thursday Evenings | Badminton |
| 3rd Thursday | Gentlemen's Lunch Club |

Charnwood Drawing & Painting Club

An established group of talented artists from around the Charnwood area will be holding their 2nd Annual Exhibition during the Half Term Break.

Friday 19th October - Tuesday 23rd October 2012



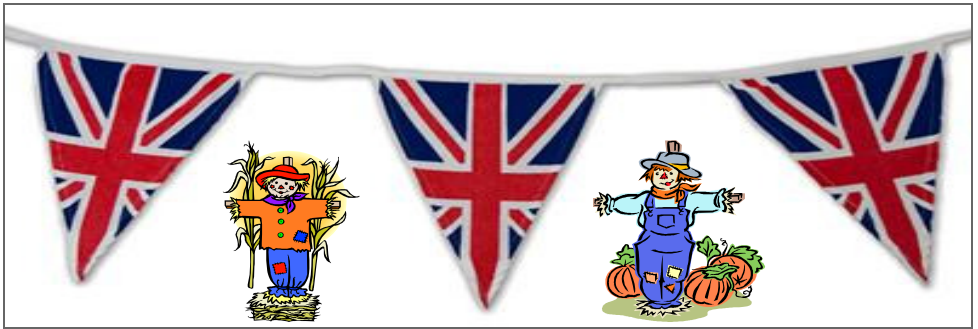
10.30am to 4.30pm

The Sunday School Rooms

FREE ADMISSION

For more details about our Club please visit:
www.charnwooddrawingpaintingclub.com





Newtown Linford Scarecrow Competition and Village Events 2012 Saturday 29th and Sunday 30th September

The end of September has traditionally hosted the Scarecrow Festival to coincide with Harvest Festival and this year is no exception. After the exceptional Jubilee festivities and a summer of sport, how better than to round it all off than with a display of our own creativity! Entered by Friday 28th (forms at the village store) all Scarecrows will be judged on Saturday 29th from 2pm onwards - traditional/ modern / artistic/ large or small let your imagination (and construction skills) run riot!

Prizes awarded to

- Under 10s ,
- 10-18,
- Adult
- Group
- not forgetting the 'people's choice' voted for by you over the weekend. Complete entry in the programme and post in the box in the village shop, Hall or School

Programmes (50p) available from the Store, School and Church on Saturday and from Store, Village Hall and Church on Sunday.

Usual teas and Fete at School on Saturday afternoon .

The Church will be open over the weekend with flower arrangements ready for the Harvest Festival. The Church bell tower will be open between 2 and 5 both days with the bell ringers on hand for people to try their hand. Also a quiz and small prizes for the children organised by the bell ringers - come along and have a go!



The Flower Club is kindly selling teas at Village Hall on Sunday afternoon between 2 and 4pm, as well as tombolas and stalls run by other village organisations and enterprises.

On Sunday the Youth Club is running a book stall (if you have any second hand books you wish to donate - please contact Scott Raynor on 249206 to arrange for them to be picked up or arrange for them to be dropped off).

The Flower Club is also doing special demonstrations /Flower arrangements for children, free of charge at the Village Hall event. There will also be cards, bulbs and plants for sale.

Prizes will be presented at 4pm on Sunday in the Village Hall- can your name be on one of the coveted certificates ? - only if you display a scare-crow !

Good weather ordered but delivery not guaranteed! Fingers crossed for a fun weekend

Sue Pritchard



Bradgate PARTY TENTS

Marquee Hire from
£295

- Fabulous Contemporary Marquee Hire
- Parties from 20 to 200
- Weddings, Birthdays and Garden Parties

For more information visit: bradgatepartytents.co.uk or call us on: 01509 270444

Newtown Linford Gardening Club

Summer has now begun to turn into Autumn but isn't it a colourful one. Several of our plants have waited until the rain has gone and the recent sunshine has brought them out into full bloom. They may be a little later than usual but who cares about that? If the frosts can hold off for a few weeks we could have a really pretty time in the garden.

Our visit to Kew was blessed with fine weather. It rained on the Monday and it rained on the Wednesday but Tuesday was glorious and sunny. We had tickets for both the garden and the palace and the complimentary cup of tea and scone was much appreciated.

Our October speaker, on 23rd, is Patsy Rainer. She is a new speaker to our Club and her expertise is Japanese gardening. The Japanese garden is something which is becoming increasingly popular in Britain. Ms Rainer visits Japan regularly and so will be able to provide us with the very latest ideas. Her talk is entitled 'The Role of Nature in Japanese Life'.

We are always pleased to see newcomers. If others would like to join us, please contact the secretary (tel. 242452 or e-mail 01530242452@talktalk.net), or come to one of our meetings to see how you like it before making a commitment (£2 for visitors). Alternatively give us a ring and ask for a copy of our programme for the coming year and we will be pleased to send one to you.

Anne and David Couling

Tennis Club end of season Bash

Date for your diary

Saturday 12th January 2013

Evening of fun featuring Live Band

THE RIGHT STUFF

Tickets available October

To reserve call 01530 243433

the right stuff
the ultimate function band



Charnwood Young Farmers 70th Anniversary Dinner Dance



26th October

7pm onwards

Yew Lodge, Kegworth

Tickets sold in advance



contact Hollie Soden for more info on
07928924913/07710235253



Solid Oak Wine Rack

Broughtons

Period Home Accessories Since 1888

Charming showrooms displaying

Period Furniture | Lighting | Garden Furniture | Ironmongery
Switches & Sockets | Fireside Tools
Oak Doors & Flooring

Also

A delightful selection of traditional Gifts & Home Accessories.

Luxury Coffee Lounge

Serving home-made cakes, and light lunches to order.



Moretti



Alexander Rose

Open 7 Days Mon-Sat 9-5 Sundays 10-4

The Old Cinema Cropston Road Anstey LE7 7BP
www.broughtons.com sales@broughtons.com 0116 236 5300



NEWTOWN LINFORD
01530 242214

Markfield Lane, Newtown Linford,

LE6 0AB

01530 242214

www.cooksfarmshop.co.uk



Top quality fruit & veg
Beef, Pork, Lamb, Chicken, Bacon,
Sausage, Pate, Cold Meats, Pies etc

Clarks ready meals

Fresh bread delivered daily from a small local bakery

Milk - Cream Butter - Cheese - Yoghurts & soups

Free Range Eggs and Duck Eggs

Relishes, Pickles, Preserves

And Lots More Good Things to Eat

Coal & Logs, Wild Bird Foods and Extensive Range Of Ani-
mal Feeds and Supplies

Fencing Timber - Stakes - Rails - Posts & Gates

Wire Netting & Country Supplies



WEEKDAYS

9am - 5.30pm

SATURDAY

9am - 5pm

SUNDAY

10am - 1pm

CLOSED BANK HOLS



THE POST OFFICE TEA ROOMS
NEWTOWN LINFORD

We now make our own hand-made Truffles & Chocolates
which can also be ordered and boxed

Special chocolates

550 Bradgate Road • 01530 242 709

**Youth Club and P.T.A
General Knowledge Quiz.**



**Friday 2nd November
Newtown Linford Village Hall.**

**£7.50 per person, £42 for a table of 6
or £55 for a table of 8.**

Discount only when group booking.

Price includes

A Gary Barsby Super Quiz,
Super Good Time
and Super Food.



Doors open at 7.00pm.

Quiz starts 7.45pm prompt.

Bar available all night.

Only drinks purchased on premises thank you.

Prize for best team name.

Additional games throughout the evening.

Tickets available from Paddy Mulvihill on 01530 243249
478 Bradgate Road, Newtown Linford

Cheques to 'Newtown Linford Youth Club' gratefully received
Register early to avoid disappointment. Table limited.

Let's support the local community.

PEST CONTROL

DOMESTIC • COMMERCIAL • INDUSTRIAL



**Guaranteed Service
No Add On Charges**

Wasps • Bees • Fleas • Ants
Rodents • Bird Control • Fly Killers
Fly Screens • Products / Services

FOR A FAST, RELIABLE RESPONSE

CALL FREE ON

0800 031 9388

Target

creating a pest-free environment

www.targetpestcontrol.co.uk | info@targetpestcontrol.co.uk

©2009 Target

COVERING *Martin Page* YOUR LOCAL *Tree* The Newtown Linford Area



MEMBER

Surgeon

Have you considered your trees may need some maintenance from time to time. Are your trees maybe too tall blocking light, unsafe or untidy?

Or maybe you need to remove that stubborn stump.

Do your hedges, Conifers or shrubs need trimming.

With 30 years of experience working with trees in your area, I would be pleased to offer you free advise and a free quotation.

I also sell high quality firewood logs



call me now on

0116 250 5848

Constantly Recommended

charnwood
SPECIALIST
TREE SERVICES



- Fully Insured
- Local family business
- Clean & tidy service





Brownies

The last Brownies before the Summer break saw us at Girlguiding's campsite at "Topstones" near Billesdon.

We joined other Brownies packs from Leicestershire for an evening Diamond Jubilee campfire and sing song.

We were given hot chocolate to keep us warm even though it was July!

It even managed to stay dry until we were on our way home, and this made for a very enjoyable evening.

Brown Owl

Apologies re letter in last months Magazine re dumping of garden rubbish in the river Lyn.

After publishing the letter last month from a resident of Main Street, I had a couple of phone calls from other residents initially to find out who had complained and also to say they were very upset as they did not put rubbish into the river and were worried how other residents may perceive them. I had decided to keep the letter writer anonymous as an editorial decision - not because they requested me to.

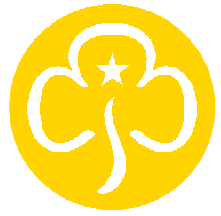
13

However all ends well as the residents were able to sort out amongst themselves how the garden rubbish came to be in the river, and the problem has been re solved.

Carole Heubeck Editor



Wanted - A Brown Owl



Due to Girlguiding's ruling on the retirement age for Guiders, I have to finish as leader next February. I will then only be able to continue as an assistant. I would love someone to come forward and take over the running of the Brownie Pack from me.

I will have been an Assistant and the Leader for the past 48 years - which has been hard work at times but great fun.

If anyone is interested in this post please apply to

**Leicestershire Girlguiding Headquarters,
97 Princess Road East, Leicester LE1 7DW
Tele: 0116 2545290**

Church Flowers

We need helpers with the Church flowers for Festivals - Christmas, Easter and Harvest. Helpers don't need to be seasoned flower arrangers as arrangements can be simple or grand. We can also provide some flower arranging tuition for you if you wish.

If interested contact Casey on 01530 249259



PAUL HARBY

Joiner / Handyman

INTERIOR / EXTERIOR WORK

No job too small – Free
Quotation – Design

275 Markfield Lane
Markfield

01530 245 464
07794 262 199



paulrharby@yahoo.co.uk

GLEBE FARM

Quality Groundwork Specialists
For both Domestic & Business Customers

**Highways Road Works
Driveways and Kerbs
Drainage & Utilities
Parking Areas & White Lines
Ground Excavations & Ground
Clearances
Landscaping
Dry Stone Walling**

If there is anything else that you require,
Please don't hesitate to ask as no job is too big
or too small

Safety Policy, Risk Assessments & Method
Statements available on request

Tel: 01530 831770 Mob: 07970 104837
Glebe Farm, Green Lane, Whitwick LE67 5EE
Email glebefarm@glebeservices.com
www.glebeservices.com

WANSTEAD FLOORING & FRENCH POLISHING

YOUR LOCAL
FLOORING SPECIALIST.

All timber floors laid

All existing timber floors
sanded and refinished

Any colour or finish

Free quotations
call Martin.

0116 2249770
07973256176

Glebe Von Wood

Encouraging Happy, Healthy Pets

3 Walks Daily

Staff That Love Your Pet

Fussing Sessions

Exceptionally Clean Kennels

End Of Stay Free Laundry Wash

Creche From 7am - 6pm

Dirty Dog Wash Or Full Grooming Service

Obedience, Fun Agility & Socialisation Training

Centrally Heated Kennels

Opening Hours

Mon - Sun 8 - 8:30am 5 - 5:30pm

Tel: 01530 813145 Mob: 07970 104756

Glebe Farm, Green Lane, Whitwick, Leicestershire. LE67 5EE
email: glebevonwood@yahoo.co.uk
www.glebevonwood.com



KEITH SMITH (ANSTEY) LTD

6 STADON ROAD ANSTEY LE7 7AY - SALES RENTAL & SERVICE

TEL: 0116 2362395 - sales@keithsmithltd.co.uk

EURONICS CENTRES

Making your money go further!

FAST FREE LOCAL DELIVERY



HOTPOINT

DHS53CX

Built-in Double Oven

- Stainless Steel
- Catalytic Liners
- Fan Assisted
- Twin Grill
- AA Rated

WAS £499.99 Save £50
NOW £449.99



ZANUSSI

ZDC37200W

Condenser Dryer

- Reverse Action
- 7kg Load Capacity
- C Rated
- 3 Progs

WAS £269.99 Save £30
NOW £239.99



HOTPOINT

WMEF742P

Washing Machine

- 1400rpm Spin Speed
- 7Kg Load Capacity
- Time Delay
- Quick Wash
- A++AB Rated

WAS £389.99 Save £60
NOW £329.99



HOOVER

OPHS712DF

Washing Machine

- 1200rpm Spin Speed
- 7Kg Load Capacity
- 29min Quick Wash
- 14 Progs
- A+AB Rated

WAS £349.99 Save £80
NOW £269.99



BLOMBERG

GSN9120

Full Size Dishwasher

- 12 Place Settings
- Half Load
- Time Delay
- 3 Year Warranty
- AAA Rated

SCOOP PURCHASE
ONLY £299.99



ZANUSSI

ZWG1120M

Washing Machine

- 1200rpm Spin Speed
- 6kg Load Capacity
- AAB Rated
- Time Delay
- Fast Wash

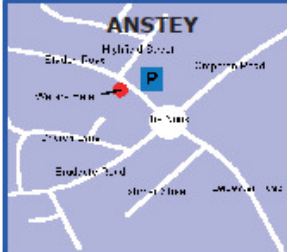
WAS £299.99 Save £40
NOW £259.99

Fitted Kitchens

We are pleased to announce that we are now agents for A.W.E Kitchens and Bedrooms Who specialise in Bespoke made to measure kitchen & bedroom furniture

Please call in for further details

Free Installation
(worth £29.99)*
Free Removal of Old Machine
(worth £14.00)
Free Removal of Packaging
*To Existing Fittings



HOTPOINT - SIEMENS - CANNON - BOSCH - ELECTROLUX

HOTPOINT - SIEMENS - CANNON - BOSCH - CREDA - WHIRLPOOL - ZANUSSI - INDESIT - BELLING - HOTPOINT - SIEMENS - CANNON - BOSCH - ELECTROLUX

Village Ramblers 2012

MEET Opposite the Village Hall, to depart at 2:00p.m.

13th October Toby & Felicity 245298

Six adults and three enthusiastic dogs spent a beautiful sunny away-day in Derbyshire. The weather was perfect for the "Five Dales walk", through Tansley, Cressbrook, Water-cum-Jolly, Miller's and Tideswell.

Each dale was distinctive, beautiful and interesting. Evidence of former industrial activity was seen along the banks of the Wye at Cressbrook and Litton Mills, which have been converted into posh residences. Dillon decided that he preferred to swim the River Wye, as you see on the photo. We all enjoyed the day and agreed that Derbyshire, in perfect weather, is a superb place to be.

The walk is in the Ordnance Survey, Peak District Walks book and is one I fully recommend. The villages of Litton and Tideswell, featured last year on T.V., are well worth a day's visit even if you do not do the walk. The lovely Church at Tideswell is known as the "Cathedral of the Peak".
ANY QUERIES -Ring Glenis Meredith 01530 242897



Dillon's dip in the Wye.

Well-behaved dogs only are welcome. To be under the close supervision of the owner, and to be on the lead where there is livestock or nesting birds. Please check with the leader that dogs are allowed across any access land.

Disclaimer. Members are reminded that participation in walks is at their own risk, and that the leader(s) accepts no liability for any loss or injury, however caused.

Glenis Meredith

Leicester Cathedral Walking Group – Treasures Unlocked
Visit 6 – Saturday 22nd September 2012 – Staunton Harold Church.

The visit will follow our established pattern of lunch in the Garden Centre Restaurant at 12.00 for 12.30pm; a visit to the Chapel of Holy Trinity, now a National Trust property (free admission) at 1.30pm followed by a short walk lasting about 1½ hours through surrounding countryside. We will then enjoy afternoon tea in the Ferrers Centre. For this walk please bring a notepad and pencil and be prepared to be amazed!

If you would like to join the Cathedral Walking Group please note the date in your diary **and book in with Mick McQuade**. Also shown below are the dates and places of the remaining visits scheduled for this season. To book in or for further details, a copy of the information document or to add your name to the 'Future Walks List', please contact Mick McQuade on 0116 231 3298, Mobile 07879 67 57 67 or by email to mick.mcquade@ntlworld.com.

Future Visit: Final visit and walk this season - 20 October - Lutterworth.



More pictures from the Summer Jubilee events
Thank you to Pat Wood for supplying me with the pictures.





**E.W. Goddard
& Sons**

(Established 1970)

**QUALIFIED PLUMBERS
Bathroom and Tiling
Specialists**

**All Building Work
and Renovation**

305 Markfield Lane
Markfield LE67 9PR

Telephone

**01530 245316 or 0116 2311672
07961 319908 or 07961 319907**

Peter Henton

**Domestic Appliance
Repairs**

Ex Zanussi Senior Engineer

Tel 0116 2896529

Mobile

07711 265414

Paint Wizard

Proprietor Paul Beaver, Grey Crescent, Newtown Linford

Working for You—All types of smart repairs including:

Panel Resprays from £155

Bumper Corner Repairs from £55

Colour Restoration From £55

Windscreen Repairs From £35

Alloy Wheel Refurbishment from £45

Leather & Trim Repairs from £45

Free Collection & Delivery Service Available

All prices are plus VAT charged at the prevailing rate

07850 456696

Unit 10, Raithby Lawrence Yard, Slater Street, Leicester, LE3 5AS

BRADGATE TEAM SUNDAY SERVICES - October 2012

DATE	GROBY	RATBY	NEWTOWN LINFORD
7th October	8.00am Holy Communion (PH)		
18th Sunday after Trinity	9.30am Special (LC)	10.00am Special (PH)	10.30am Holy Communion (JW)
	6.30pm Holy Communion (LC)	6.00pm Holy Communion (FB)	
HARVEST			
14th October		8.00am Holy Communion (PH)	8.00am Holy Communion (LC)
19th Sunday after Trinity	9.30am Holy Communion (LC)	10.00am Morning Prayer (PH)	10.30am Family Service (KW)
	6.30pm Evening Prayer (PH)		
21st October	8.00am Holy Communion (LC)		
20th Sunday after Trinity	9.30am Morning Prayer (HH)	10.00am Holy Communion (LC)	10.30am Holy Communion (PH)
	6.30pm 3SE (Team)		
28th October			8.00am Holy Communion (PH)
21st Sunday after Trinity	9.30am Holy Communion (FB)	10.00am Holy Communion (PH)	10.30am Morning Prayer (LC)
	6.30pm Holy Communion (LC)		

MIDWEEK COMMUNION SERVICES

NEWTOWN LINFORD	Thur	10am	4th				
GROBY	Wed	9.30am	3rd	10th	17th	24th	31st
RATBY	Thur	9.30am		11th		25th	

Contact Details

Team Rector Revd Dr Peter Hooper 0116 239 4606
The Rectory, 23 Ferndale Drive, Ratby, LE6 0LH
Email: peter@hoopers.orangehome.co.uk

Team Vicar Revd Louise Corke 0116 231 3090
58 Pymm Ley Lane, Groby
Email: words.th@talktalk.net



Administrator: Bekki Williamson (9am- 11am weekdays) 0116 239 3768

Weddings

7th September ~ Georgie Panteli and Sarah Collins

*We wish these couples every happiness as they
begin their married lives together.*



Newtown Linford Sunday School

We meet once a month on the first Sunday of the month in the Sunday School Rooms at 10.30 for an hour. Why not come and join us.
Contact Katherine or Carole on 244790

**The Sunday School Rooms are available to hire
and are ideal for birthday parties.
They come complete with kitchen and toilet facilities.
From £10 per hour
To book the Sunday School Room
Call Casey Pearson on 249259**



THE LINFORD

"Your village local!"

**Quiz Night every Wednesday
Song Club**

see posters for dates and details

Function Room Available

Main Street Newtown Linford
Tel: 01530 244012 after 6pm

Safeclean[®]

The furnishing care specialists from **GUARDSMAN**

**Professional carpet &
upholstery cleaning and repair
services**

- ◆ Curtains cleaned in situ
- ◆ Expert spot & stain removal
- ◆ Guaranteed 5 year anti-stain policy
- ◆ Hand finishing of swags & tails
- ◆ Mattresses deep cleaned
- ◆ Pest control, unpleasant or destructive pests removed

Telephone 0800 328 2927

www.safeclean.co.uk

SYKES JEWELLERS

**WATCH, CLOCK &
JEWELLERY REPAIRS**

**WATCH BATTERIES AND
STRAPS FITTED WHILE
YOU WAIT**

**8 BRADGATE ROAD, ANSTEY
TEL: 0116 236 2510
sykesjewellers.co.uk**

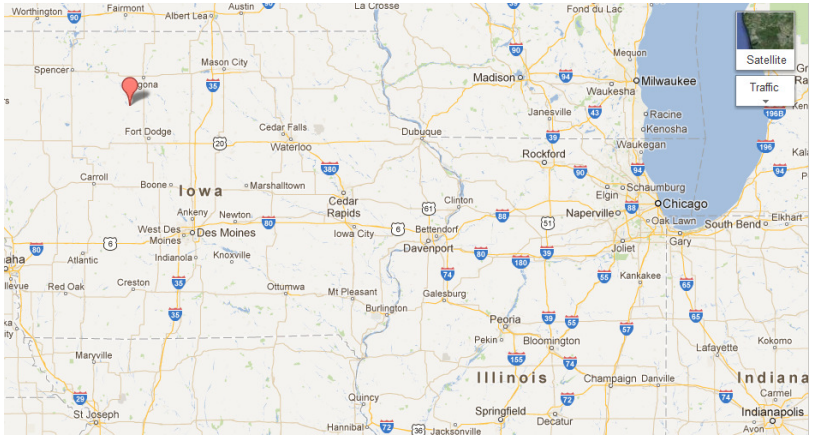


From the Records Dust to Dust

I was looking for a time in our Records when I came across an article in the Church Magazine for October 1993 headed Bradgate Iowa. How many of you have noticed on our village signs that we are twinned with Bradgate Iowa?

What is the story behind this? A Leicester family were on holiday with a Canadian family and had travelled into Iowa. Their train had a problem and they all had to get off. Whilst waiting they noticed a signpost which said Bradgate. They were curious and went to investigate. They found

Bradgate and went into the post office. Explained all about our Bradgate and met some of the residents. This was the link



with us and information was passed between us and Bradgate, Iowa. Bradgate, Iowa is a small place in a farming area. Life was hard work and it was a community that had to be very resilient to survive. At that time twinning was the latest craze and through our Parish Council, we applied to be twinned with Bradgate, Iowa. The charter was signed on 11th June 1982 by Bob Bown for the Parish Council, the interregnum vicar Revd Dermot McQuinlan and others. There are six signatures from the Americans. The charter had been designed and painted by Margaret Atkinson a resident of Grey Crescent. It was framed and Lydia has it. The article in October 1993 described their problems that summer. Rain, rain and more rain! Many acres were flooded and at the time the letter was written their water was still not drinkable. They said things were improving, most of the basements had dried out and the Red Cross had supplied clothes, food and cleaning materials. They said they had a lot of help from even as far afield as Texas. That was not the end of it - they had further storms including a tornado in May 2004, when the repair problem was huge.

Our contact Molly Brown (not related to Alan and Molly who lived in Newtown Linford) moved to Des Moines, south of Bradgate. We received Christmas cards for many years. Sadly she has died and our link with Bradgate lapsed.

Since 1993, the young people have all moved away and the older ones that stayed have died. The

population of Bradgate was Methodist
only 86 in the census of

2010 - a great drop since the dizzy heights of 261 in 1940. the earliest record is the census of 1900 when the population was 223.

More information about Bradgate Iowa can be obtained by looking at Google.

Janet Neaverson

Ps from Editor - I have just had an enjoyable tour around Bradgate Iowa courtesy of Google Earth and the street map pictures. Interestingly, of the four pictures on there of Bradgate Iowa, three of them are actually of Newtown Linford Leicester! A way to explore the world from your arm-chair!



P WHITWORTH
Building Contractor
Established for 25 years



227 Markfield Lane,
Newtown Linford,
Leicestershire LE67 9PQ

High quality craftsmanship assured.
From Planning to completion.
Specialising in traditional materials.
All work guaranteed, references available.
For a free, no obligation consultation,
telephone Peter Whitworth on:

07973 841 655

Bradgate Lions Club News

We are currently into the third month of our 24th. Year, which started in July and will run until the end of June 2013. During this period we will be attempting to raise funds in support of mainly local charities, as we have done over the previous years, raising over £145,000.00 since we formed in 1988.

Although we a part of the world's largest service organisation, Lions Clubs International, with over 1.45 million members worldwide, spread over 45,000 clubs in over 200 countries, we try to concentrate our efforts, mainly in helping our local deserving causes such as Air Ambulance, Coping with Cancer, LOROS, Rainbows Children's Hospice and also national charities like Children in Need.

This current year we shall be raising funds with bucket collections at local stores; Santa & Easter Float Collections around villages such as Anstey, Ratby and Kirby Muxloe; A Race Night in Botcheston, and a St, Georges Celebration Brass Band Concert in Markfield, as well as attending local village Galas and Fetes.

We also carry out welfare commitments in the area such as taking disadvantaged Children to Ashby Statutes Fair and Christmas Ward Visits to Glenfield Hospital with a Choir and gifts for the patients.

Our members enjoy a very active social life with monthly visits to the theatre, pub meals etc; and we have already enjoyed a River/Canal cruise and picnic lunch, and a Garden Party with BBQ in the last two months.

Bradgate Lions Club meets twice a month on the second and fourth Thursday evenings. The first meeting is a business meeting held at Forest Hills Golf Club, Botcheston, where the clubs affairs are discussed and the second is our social event, venues for which vary.

The area covered by our Club, (but not restricted to), encompasses Anstey, Botcheston, Desford, Glenfield, Groby, Kirby Muxloe, Leicester Forest East, Markfield, Newtown Linford, and Ratby.

We should like to welcome new members, both Male and Female into our club, with no restriction on age over 21.

For further information please 'phone the membership officer, Roger Gamble (01530)242912.

THE VILLAGE
restaurant



Come Dine with Us

Enjoy our set dinner menu for just

£12.95 for two courses

£16.95 three courses

Exceptional value

Available Thursday & Friday Evenings

The Village Restaurant, 544 Bradgate Road, Newtown Linford, Leicester LE6 0HB

Tel: 01530 245801 Web: www.thevillagerestaurantenewtownlinford.co.uk



Taste of Autumn Five Course Dinner Menu

For just £20 per person

Available Tuesday- Thursday

Treat you and your friends to a dining experience they will not forget
but will certainly want to repeat

For further information please visit our website www.the-grey-lady.co.uk

To make your reservation please call 01530 243558



**Newtown Linford Neighbourhood
Watch -
A member of the Parish Council**



Regrettably we have had three burglaries recently (two on Main Street and one on Markfield Lane). In all cases, either a burglar alarm went off or they were disturbed. There have been suspects in all three cases. In one instance two people were arrested and one charged.

There was a serious accident on Sharpley Hill at the beginning of the village which necessitated the Attendance of the Air Ambulance. The Police are unable to divulge any information at all even whether the victim survived. This is due to on-going enquiries of a serious nature.

At the time of writing this (10th September) I am in the happy position to be able to inform you that Community Speedwatch is on its way. The village has been circulated with a bright red leaflet to this effect. The County Hall Highways Team have been and surveyed where the gun is to be used. They will be letting me have a plan showing these positions very soon. The training evening for the volunteers will be on Monday 24th September, in the Sunday School Rooms between 7pm and 9pm. Only those who have attended this training will be able to actually hold the gun. From this date we will be in possession of the gun and yellow coats for the next four weeks. By the time you read this Magazine you should have seen the team out on the streets.

2013 brings major changes to the way Community Policing is carried out. This is the first major change for some time. Leicestershire Police say the following:-

“Leicestershire Police is committed to having the right people in the right place, at the right time so that our resources match the demands placed on us by the public of Leicester, Leicestershire and Rutland. However, due to the unprecedented change to the economy and the ever-changing needs of a modern day police service, we also need to embrace the principles of cost and efficiency savings, whilst ensuring we maintain the highest standards of service delivery.

Our aim is to continue to provide a service embedded within our communities through neighbourhood management where resources are effectively deployed to meet threat and risk, targeting those who cause most harm, ensuring the people of Leicester, Leicestershire and Rutland are protected from crime and anti-social behaviour. January 2013 will see some changes to how we deliver Neighbourhood Policing.

We will be increasing the resources in Safer Neighbourhood Teams (previously Neighbourhood Policing Teams) and realigning our resources to meet demands, allowing Safer Neighbourhood Teams to investigate local crime, problem solve and manage offenders. Safer Neighbourhood Teams will predominantly deal with incidents, offenders and vulnerable people within their respective neighbourhood.

Each neighbourhood will have a named 'Beacon Officer'. They will be the named point of contact for the community and partner agencies and will be constantly assigned to a particular neighbourhood. Police Community Support Officers will continue to be an integral part of Safer Neighbourhood Teams, being visible in and engaging with local communities.

Our duty is to protect our communities. This is at the heart of everything we do and regardless of the challenges we face in the future, we will deliver the level of service demanded by the diverse communities of Leicester, Leicestershire and Rutland."

Several of the Parish Councillors will be attending a meeting with The Chief Constable of Leicestershire Police Simon Cole and Chief Superintendent Chris Thomas Counties BCU Commander to hear more about how it will work. Watch this space!!!

Pam McMorran

NHW Co-ordinator – pam@riverlyn.freeseve.co.uk

01530 242140

Bradgate Flower Club

Evening meetings start at 7.30pm in Newtown Linford village Hall (which will be the venue each month except December). The Flower Club's events are open to existing and new members and to visitors for whom an entry charge of £5 is made.

Further details from Geraldine Abbott on 01530 415378

Birthday Greetings

We would like to say Happy Birthday and best wishes to Mrs Coombes of Main Street who celebrates her 93rd Birthday on the 22nd September.

Eileen spent the day celebrating with family at a local restaurant.



**S
O
L
D**

Roy Green

LETTING AND ESTATE AGENTS

more

SALE PROPERTIES

TENANTS WAITING

required for

LETTING PROPERTIES

**L
E
T**

FREE E.P.C. *with every listing*

ALL home owners / occupiers and private tenants are now eligible for **grants of 100%** towards **Home Insulation**

bromac
Bromac Builders Ltd

'Save money this winter'

Call now for your free survey

bromac
Bromac Builders Ltd

bromac
Bromac Builders Ltd

To find out more, contact:
Bromac Builders Ltd
63 Main Street
Newtown Linford
Leics LE6 0AE

Tel / Fax: 01530 245 318
Mob: 07891 976 010 / 07774 852 529
Email: katy@bromacbuilders.com
Web: www.bromacbuilders.com

NHBC


NATIONAL INSULATION
ASSOCIATION

bromac
Bromac Builders Ltd

The Welcome Club - Gone but the spirit is not dead!

I received word that the Welcome Club was closing after more than thirty years. During its life it has been a very welcoming Club. All started as somewhere warm one winter Thursday morning, for those who had collected their pensions, as somewhere to go and have a good chat with friends and a warm drink, a homemade cake or biscuit, made by the Women's Fellowship and other Newtown Linford Ladies. There were the extra occasions such as the two annual outings, one being the Christmas Lunch at a local restaurant (until the Village Hall started the lunch for the senior citizens). I think it was Peggy Bown who started the Club and there have been many who have guided it along including Joyce and Stan Perrin, Kathy and Harry Prince and finally Janet Hill.

Life has changed in many ways over the last thirty years. The Government altered the ways to collect the pension and with our Post Office closing it was not as easy a way to collect cash.

Owning a car has meant the senior citizens are a lot more mobile and able to go out and about to meet others and not rely on the Village community. The pull for a weekly chat was not as important.

The Welcome Club started with 60 members but remember they were already Senior Citizens and now thirty years on, many have passed away or moved. Many are frail and others no longer drive or have a lift. The number was down to just five ladies. These ladies have not given up the weekly meeting, rather than just an hour together they now take the bus to Coalville and have a nice lunch in a cafe with lots of chat and return to Newtown Linford on the bus.

It was something that worked well and I would like to thank all those who were involved in the running or just came to enjoy the gathering. All did much to make it a long running success.

Janet Neaverson

Badminton Club

Do you like to play BADMINTON or want to try?

Why not come and join our friendly club at 7.30pm on a Thursday evening in the Village Hall.

For more information call Marie 01530 243943 or Helen 0116 2871635 or just turn up.

Come and visit the
Family Fayre

Products & services for bumps to teenagers



*not to scale



Come and meet
Peppa Pig

11 a m - 1 p m

& Stormtroopers

11 a m - 4 p m

Bring Your Empty Wetwipe Packets

We can recycle them for further donations to Ellie's Fund!

Leicester Marriott (M1 J21), 11am-4pm

Sun 7th October, Free Entry & Parking

Demonstrations throughout the day

Georgie - info@familyfayre.co.uk - 07986 113442

Raising funds for



Ellie's Fund

Brain Tumour Trust

Registered Charity #1138359

LET SANTA HELP YOUR CHARITY

Did you know that you could use the Loughborough Santa Fun Run to help raise much needed funds for your favoured charity. The event is now in its eighth year and will be held on Sunday 9th December running from Loughborough University into the Market Place and back. Since it started, the Santa Run has raised more than £280,000 for charities and one of the charities benefitting from this year's event could be your own particular favourite.

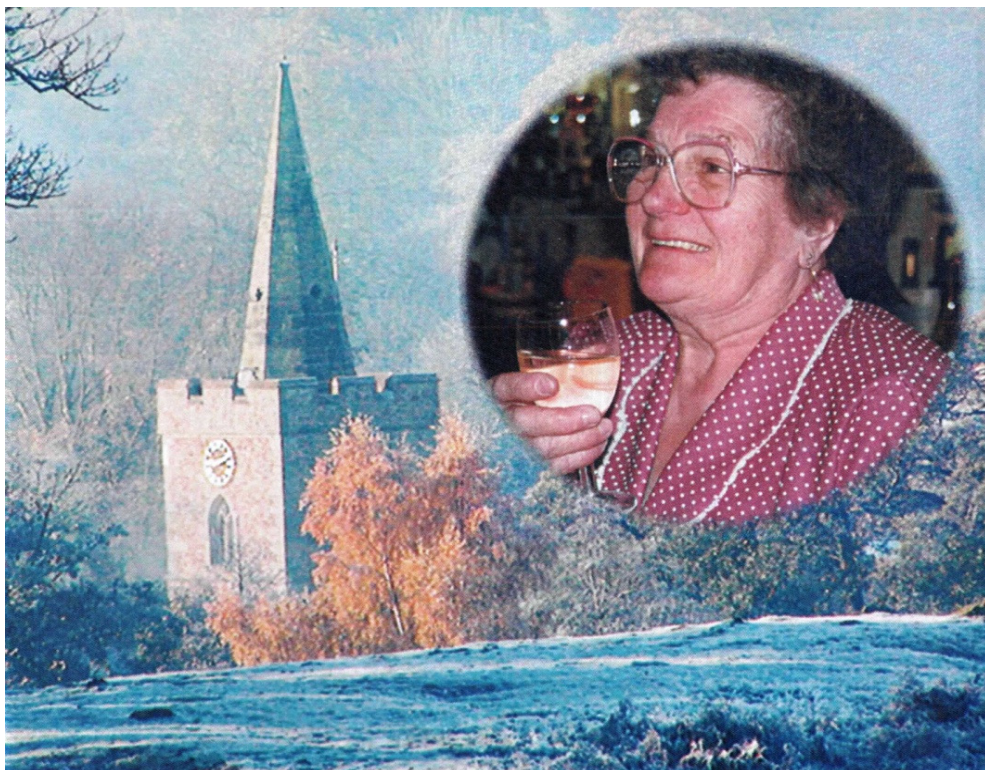
All you have to do is enter a team and give the charity details including its registered number to Loughborough Rotary Club who will help you do the rest. Last year, as well as teams running and raising funds for their own charity, groups from local Schools who had charity fundraising projects as part of their timetable also took part very successfully. So talk to your friends or form teacher to decide which charity you would like to help.

**For more information, the Santa Run website is
www.santa-fun-run.co.uk**

**and the Entry Co-ordinator, Rachel can be contacted on email
carl.hughes@hughesdrivertraining.co.uk, telephone 07856 377708.**

As before, a prize will be given to the team with the most original costume and it's a great way to help your cause whilst at the same time getting into the Christmas spirit by joining in one of Loughborough's major festive activities. This year's event promises to even bigger and better, with live entertainment along the route and the new Loughborough Christmas Pudding Sunday market taking place at the same time.





Gwendoline Ida Wakefield was born on 2nd August 1928 at 60 Main Street which is one of the “sideways on” cottages near to the Linford now lived in by John and Maureen Firth. She was the survivor of twins born to Isaac (known as Bill) and Sarah Jackson (nee Gillett). She died on the 23rd June 2012, the only survivor of at least eleven children. Gwen was educated at the Newtown Linford Primary School followed by Charnwood School. She started her working life as a machinist at G.H. Palmer of Anstey which was a shoe factory. There she met Len who was working there as a clicker following his demob. They married in All Saints Church here in the Village in May 1947. Their son was born in 1948. Their second child was miscarried and their daughter was born in 1953. Len had a nervous breakdown and had to spend a lot of time in Carlton Hayes Hospital which was at Narborough. This put a financial burden on Gwen and thus began her years of handling many jobs at the same time. At the weekends she used to help Mrs. Fowkes serving teas at the Waterworks House opposite the Church. In the mid-fifties she became caretaker of the Village School.

As a young married couple Gwen and Len lived with Gwen's parents but in 1958 they moved into 12 Grey Crescent later moving to number 26 where she lived until she passed away. Gwen's father Bill (known as fairy) worked on the Bradgate Estate. When Len returned from hospital he also went to work on the Estate with his father in law. In 1961 the job of full time steward and part time stewardess for the Club became available and this meant Gwen had to leave her job as caretaker at the School. It was at this time she offered her services as cleaner to many village families. She worked for 45 years for Dr. Edmondson Jones (local GP practising at Markfield) and his wife Christine looking after their home and their dogs. They wrote recently that Gwen was part of their family.

Gwen's job as stewardess involved catering for functions such as weddings, parties, fund raising events to provide food for the OAPs, teas for the villagers and the childrens' Christmas party. In 1963 she gave up smoking (usually 40 to 60 a day). Due to ill health Len was asked to relinquish his job as Steward and with it went Gwen's stewardess job which she had held for 27 years. She nursed Len with cancer until his death in 1985.

Gwen was a member of the WI having attended meetings with her mother when in her teens. After the closure of Newtown Linford WI she joined Woodhouse Eaves WI. She belonged to the Newtown Linford Luncheon Club which was formed in 1980 and always sold the raffle tickets. For at least the first ten years the Club had the rule that you did not sit with friends and Gwen supervised the numbers as to where you would sit. Once issued with a number, members used to try and sneak by Gwen to shuffle the numbers on the tables in order to sit with friends but they were not often successful!

Gwen's son and daughter who have supplied this information say that after their father's death they had to make an appointment to see their mother as besides everything else she belonged to the Women's Fellowship, Thursday Coffee Club, a Walking Group, she went on various outings and trips with neighbour Linda Reynolds and by now was taking in ironing for several local residents. She also went Banger racing being known as 'Banger Gran'. She was Neighbourhood Watch representative for her half of Grey Crescent often passing on useful information to the co-ordinator. She became a member of the Choral Society when it was formed.

Like her mother before her Gwen suffered badly with Arthritis and had to give up knitting and took to doing extremely difficult jigsaw puzzles. In

2012 when she finally gave up cleaning the Church, after at least twenty years, she was presented with a jigsaw of the Church but unfortunately her failing health prevented her from being able to do it. She had given up all her other jobs in 2011 and spent time enjoying her garden, watching the birds on the feeders and putting out scraps for the foxes much to the annoyance of near neighbours who kept fowls nearby.

Gwen's family would like to thank Sharon from the village store who organized the food and the Club Staff who served it at the Linford, Anstey Funeral Services for their care and in particular placing the cross and plaque at the cemetery and The Rev. Dr. Peter Hooper for taking the Service. Finally thanks to the congregation who donated over £300 for the retiring collection. It had been Gwen's wish that this be given to the Church for which the DCC also says thank you.

The photograph shown here which was also used on the cover of the Celebration of Life Service Sheet was taken by Iris Sayer. Gwen loved Iris's photographs and this one was taken very early one morning in order to obtain the unusual colouring.

Thanks to Gwen's family for writing this obituary



Spring-Flowering Bulbs

Now fully in stock - Daffodils, Crocus, Cyclamen, Dwarf Daffs, Hyacinths, Tulips, Iris, Anemones & More

40 Colours of Winter Pansies

Winter Hanging Baskets, Garden Mums and more

New Stock of Wild Bird Care



Brookside Nurseries
A Garden Centre For Gardeners

9am - 5pm Monday - Saturday, 9am - 1pm Sunday
Tel: 0116 236 4564 - 129 Cropston Road, Anstey, LE7 7BR
www.brooksidenurseries.co.uk - contact@brooksidenurseries.co.uk

Anstey Nook Car Park.

I have had many requests from residents to ask Charnwood Borough Council to look at parking arrangements within the Nook Car Park, Anstey. I understand residents are finding it increasingly difficult to park when visiting Anstey for shopping and business as the majority of vehicles are parked through the day with no restrictions in any area of the car park.

At my request, Charnwood Borough Council are now conducting a survey about who uses the car park, when it is used and feedback on how it is managed. I would be grateful if residents who use the car park and possibly had difficulties parking, would respond to the survey, which can be found on the council website accessing the link

<http://www.surveymonkey.com/s/P7JT2H9>

Police and Crime Commissioners. (PPC's)

As Chairman of the Charnwood Community Safety Partnership I have had some involvement in getting ready for the transfer to a Police and Crime Commissioner (PCC). The first election for our PCC will take place on the 15th November 2012. He or she will replace the current Police Authority within the Force Area of Leicestershire, Leicester and Rutland. The election will be conducted under the supplementary vote system, which is currently the system used to elect Mayors. Voters will be asked to select their first and second preference for the PCC. I am sure this will be explained more fully as we get nearer to polling day in November. In my view, it is important that residents do go out and vote as the PCC will have the mandate to cut crime, anti-social behaviour and deliver an effective and efficient police service, also determine the future direction of policing within the force area.

David Snartt. Borough and County Councillor



Registered No. 18659

When was your boiler last serviced?

For safety and efficiency gas appliances should be serviced annually.

Call Chris Harrison

0116 2311662

Gas, Plumbing & Heating Engineer

30 years Experience

Also - Boilers installed, Full heating systems

Bathrooms, Kitchens

No Job Too Small.

For a free estimate, call

0116 2311662

NEWTOWN LINFORD PARISH COUNCIL

Playing field: The feedback we have had so far about the new equipment is full of praise. The Cone particularly seems to be great fun. One of the joys is that so many children can use it at the same time. The little ones really missed the roundabout after the playing field was refurbished, but we think they will like this new sky-blue one very much. You may remember that The Cone and The Waltzer were acquired to commemorate the Queen's Diamond Jubilee and there will be a plaque to acknowledge this before long. Unfortunately, due to the devastation caused by the tornado, there is still treework to be done.

New Parish Councillor: We were delighted to welcome our newly co-opted Parish Councillor, Sue Pritchard, at the last Parish Council meeting in September. She signed the official document 'the Declaration of Acceptance of Office'. I know I said this in last month's Magazine, but it is worth saying again: "With her educational and professional background she will be a great asset to the Parish Council."

Community Speed Watch: Thanks to the tireless efforts by Parish Councillors Pam McMorran and Philip Baker the requisite number of 175 signatures has been reached and training will now take place towards the end of the month. The Speed Watch will commence at the beginning of October. Pam will talk about this in more detail in her section of this Magazine.

Planning issues: The media have been full of the changes we can expect regarding rules on planning. It seems that, unless you live in a Conservation Area, there will be a very much more relaxed attitude to extensions to buildings and additions of conservatories. As a Parish Council we are not clear how this will affect our Village Design Statement and the safeguards included in it. I shall write about this subject again when we have a better idea of the consequences of the new rules.

Date of next meeting: Monday 8th October 2012 at 7 pm in the Small Hall of the Village Hall. We always welcome visitors.

Lydia Knott
Clerk to the Council
t: 01530 242522;
e: lydia.knott@btinternet.com

Foot Problems ?

Corns, Calluses, Veruccae, Hard Skin, Nail Problems, Athlete's foot, Sore and Cracked Heels.

Have them treated
Professionally in the comfort of
your own home

Ring **Alistair Watt** MCFHP.MAFHP.
Foot Health Specialist



Tel 01530 243009
or 07802 777221

Evenings and weekends
available

Service with a smile -



DIGIVISION AERIALS



Confederation of
Aerial Industries Ltd
A quality guaranteed installation at a fair price
Member C1454



- Digital TV Aerials
- Extra Points
- FM / DAB Aerials
- Storm Damage
- LCD / Plasma TV Wall Mounting Service
- CCTV
- Phone Points
- OAP Discount
- Home Networking

Fully Insured and CRB Checked
Faults and Diagnostics - All Work is Meter Tested
FRIENDLY LOCAL SERVICE

TELEPHONE: 0116 287 1980
OR MOBILE: 0793 272 4926
Email: info@digivisionaerials.co.uk

Mark Chadwick



P~L~A~S~T~E~R~E~R

High quality plasterer with
25 years experience
Competitive rates.
All jobs considered.

For a free quote:-

Telephone: 0116 2861057/Mobile:
07971 978 098

Email: markchadwick@hotmail.co.uk

PRIVATE AND
COMMERCIAL

INTERIOR / EXTERIOR

A.B. SHERRIFF

Established 1988

**PAINTER &
DECORATOR**

42 BRADGATE DRIVE
WIGSTON, LEICESTER

Telephone 0116 288 1048
Mobile: 07719 366 569



Booking of Village Facilities

To book the Village Hall (Residents only)
call Pat Wood on 242251.

To book the Sunday School Room £10 per hour, £15 for two
hours, £20 for 3 hours, .call Casey Pearson on 249259

Consult

WALTER MILES

(Electrical Engineers) LTD

Est. 1928

For All Your Electrical Requirements

**LIGHTING, HEATING, POWER, REPAIRS, RENEWALS
AND MAINTENANCE**

Member of the Electrical Contractors' Association and N.I.C.E.I.C

Office and Works Marshall House, West Street, Glenfield, LEICESTER, LE3 8DT
Telephone **0116 287 2400** Fax **0116 287 252**
E-Mail office@waltermiles.co.uk

Magazine Contributions

Can we please have your contributions for the **November 2012** issue by **15th October 2012** please. **Send to the Editor, Carole Heubeck, 5 Grey Crescent, Newtown Linford (01530 244790).**

E-mail heubeck111@btinternet.com and heubecks@googlemail.com

Please could you send any emails to the above email addresses. If you do not receive an acknowledgement of your email—please contact Carole, the Editor direct on the above number to check we have received it.

The opinions expressed by the contributors are not necessarily those of the Editors and they reserve the right to amend, shorten or not print any article or advertisement submitted for publication. Whilst every effort has been made to ensure the accuracy of the information printed in this magazine, and advertisements are accepted in good faith, no liability can be accepted for loss, damage or claim of any kind incurred by the reader